

# Altrincham

q1 2011 business confidence report



## headlines

- February 2011 saw a new record in company closures in Altrincham when compared to any previous February.

## contents

new company registrations

closed companies (dissolved)

net company growth

uk company share

director age

director gender

naming trends

sic data

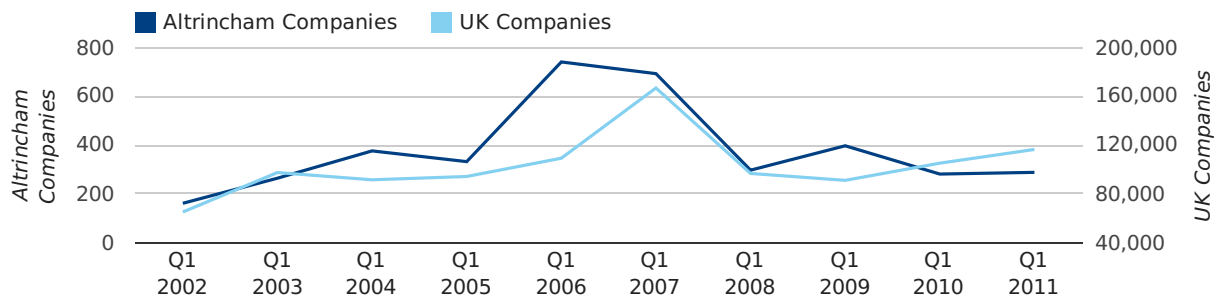
### Quarterly Data (Q1 Jan-Mar 2011)

A total of 288 companies were registered in Altrincham during the first quarter of 2011 (Jan 2011 - Mar 2011).

This figure is an increase of 2.5% versus the same period last year (Q1 2010). This figure compares badly to the UK as a whole, which saw an increase of 10.7% against the same period last year.

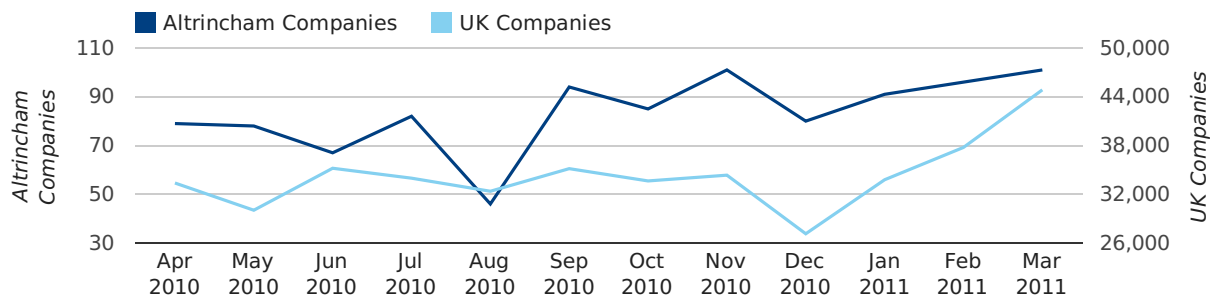
FIRST QUARTER (JAN 2011 - MAR 2011)	ALTRINCHAM	UK
2011	288	116,391
2010	281	105,137
% CHANGE	2.5%	10.7%
RECORD YEAR	2006 (741)	2007 (166,814)

### new companies by quarter



### Monthly Data (Jan, Feb & Mar 2011)

### new companies by month



	JANUARY	FEBRUARY	MARCH
NEW COMPANIES IN 2011	91	96	101
NEW COMPANIES IN 2010	96	90	95
% CHANGE	-5.2%	6.7%	6.3%
RECORD YEAR	2007 (145)	2009 (174)	2006 (620)

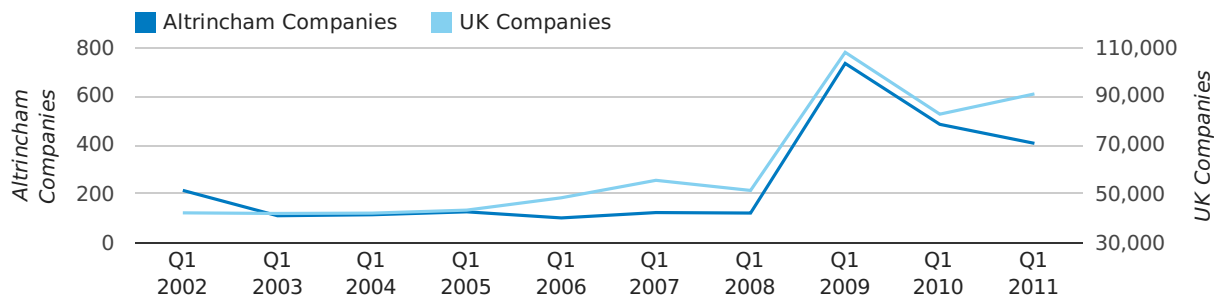
### Quarterly Data (Q1 Jan-Mar 2011)

A total of 407 companies were dissolved in Altrincham during the first quarter of 2011 (Jan 2011 - Mar 2011).

This figure is a decrease of 16.1% versus the same period last year (Q1 2010). This figure compares well to the UK as a whole, which saw an increase of 10.0% against the same period last year.

FIRST QUARTER (JAN 2011 - MAR 2011)	ALTRINCHAM	UK
2011	407	90,986
2010	485	82,677
% CHANGE	-16.1%	10.0%
RECORD YEAR	2009 (735)	2009 (108,060)

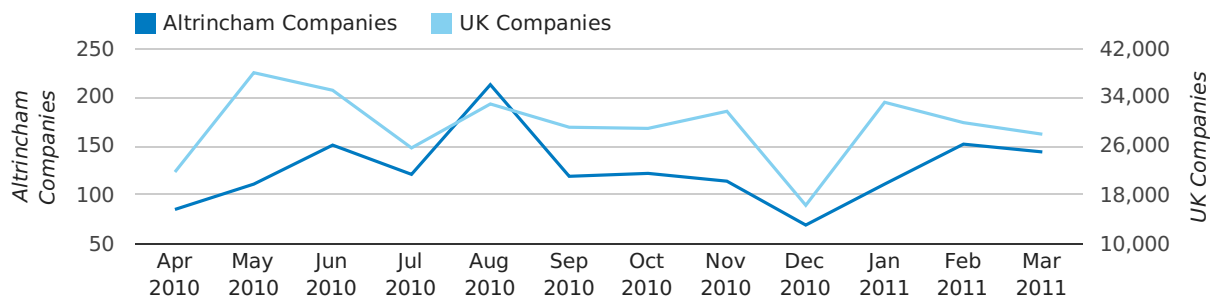
### dissolved companies by quarter



### Monthly Data (Jan, Feb & Mar 2011)

February 2011 saw a new record in company closures in Altrincham when compared to any previous February.

### dissolved companies by month



	JANUARY	FEBRUARY	MARCH
CLOSED COMPANIES IN 2011	111	152	144
CLOSED COMPANIES IN 2010	291	73	121
% CHANGE	-61.9%	108.2%	19%
RECORD YEAR	2009 (387)	2011 (152)	2009 (261)

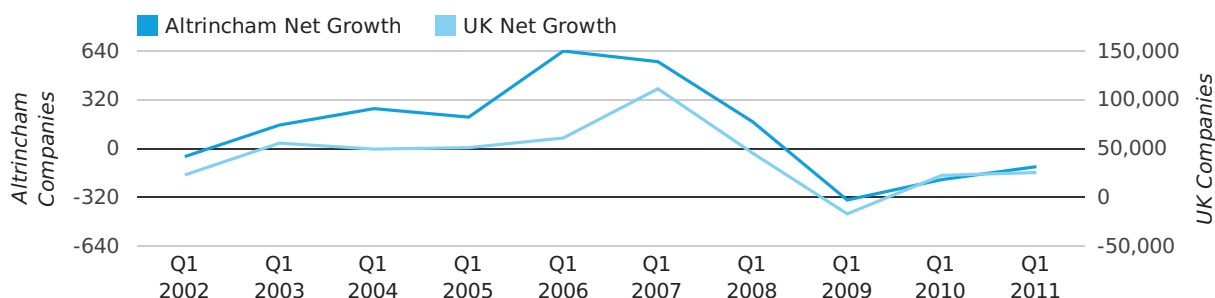
### Quarterly Data (Q1 Jan-Mar 2011)

Net company growth for Altrincham during the first quarter of 2011 (Jan 2011 - Mar 2011) was -119 companies.

This represents an increase of 41.7% on the same period last year.

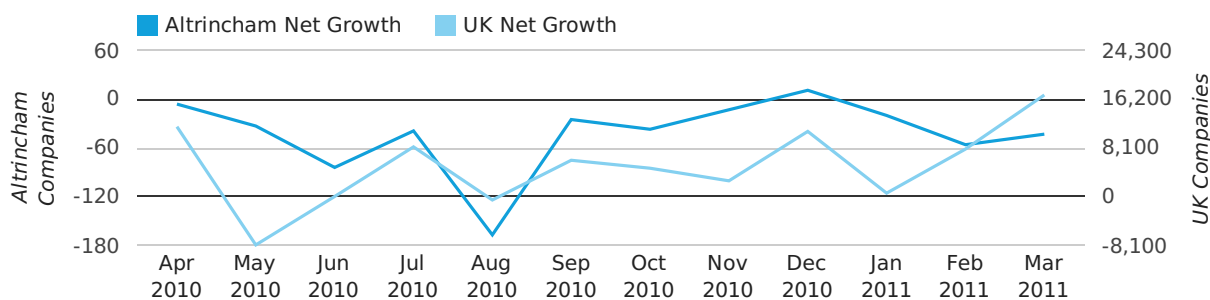
FIRST QUARTER (JAN 2011 - MAR 2011)	ALTRINCHAM	UK
2011	-119	25,405
2010	-204	22,460
% CHANGE	-41.7%	13.1%
RECORD YEAR	2006 (640)	2007 (111,282)

### net growth by quarter



### Monthly Data (Jan, Feb & Mar 2011)

### net growth by month



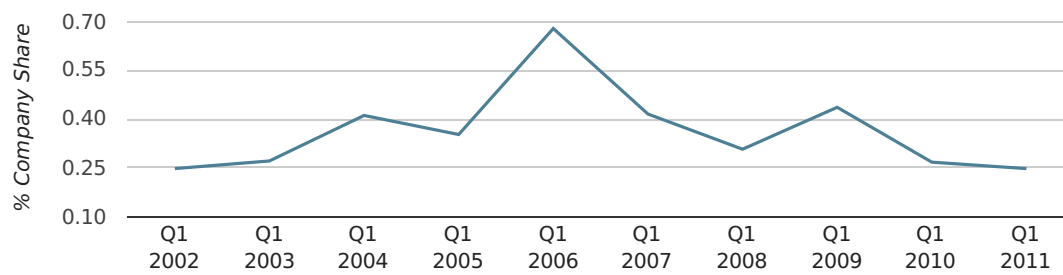
	JANUARY	FEBRUARY	MARCH
NET GROWTH IN 2011	-20	-56	-43
NET GROWTH IN 2010	-195	17	-26
% CHANGE	-89.7%	-429.4%	65.4%
RECORD YEAR	2005 (120)	2007 (125)	2006 (589)

### Quarterly Data (Q1 Jan-Mar 2011)

In the first quarter of 2011, Altrincham formed 0.2% of all UK companies.

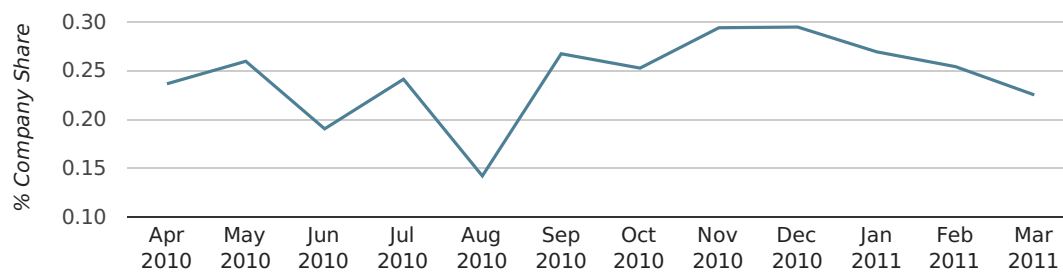
FIRST QUARTER (JAN 2011 - MAR 2011)	ALTRINCHAM
2011	0.2%
2010	0.3%
2009	0.4%
2008	0.3%
2007	0.4%
RECORD YEAR (SINCE 1960)	2006 (0.7%)

### company share by quarter



### Monthly Data (Jan, Feb & Mar 2011)

### company share by month



	JANUARY	FEBRUARY	MARCH
UK FORMATION SHARE IN 2011	0.3%	0.3%	0.2%
UK FORMATION SHARE IN 2010	0.3%	0.3%	0.2%
% CHANGE	-18.2%	-6.2%	1.4%
RECORD YEAR	1974 (0.7%)	1974 (0.8%)	2006 (1.4%)

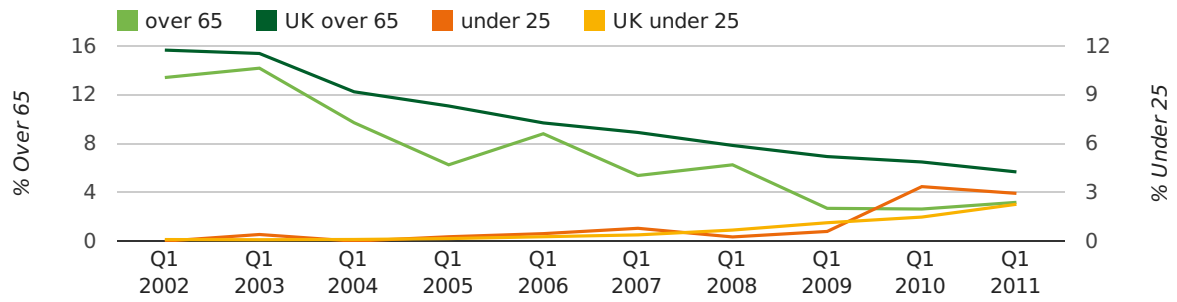
### Quarterly Data (Q1 Jan-Mar 2011)

The average age of a director in the first quarter of 2011 was 44.9.

The percentage of directors under the age of 25 was 2.9% compared to the UK figure of 3.0%.

The percentage of directors over the age of 65 was 3.2% compared to the UK figure of 4.3%.

#### director age by quarter

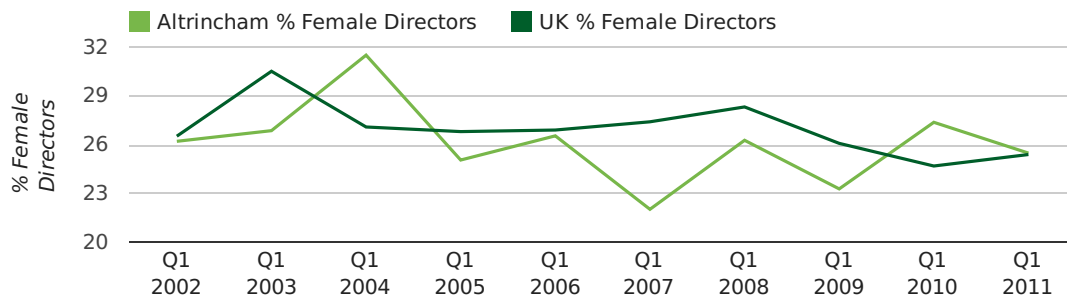


### Quarterly Data (Q1 Jan-Mar 2011)

The record first quarter for female directors in Altrincham was in 1861 when 40.0% of all directors were female.

25.5% of all director appointments in Altrincham in the first quarter of 2011 were female. This compares to a UK average of 25.4% for the same period.

#### director gender by quarter





## Previous 12 months (Mar 2010-Mar 2011)

Excluding: LIMITED, LTD, &amp;, UK, SERVICES, THE, (UK), AND, LTD., A, LLP, SOLUTIONS, COMPANY, OF.

WORD	PERCENTAGE	UK WORD	UK PERCENTAGE
CONSULTING	3.06%	CONSULTING	5.04%
CONSULTANCY	2.08%	MANAGEMENT	4.97%
MANAGEMENT	1.56%	CONSULTANCY	3.16%
DESIGN	1.56%	PROPERTY	2.38%
IT	1.30%	TRADING	2.10%
ENGINEERING	1.30%	DESIGN	1.93%
PROPERTY	0.72%	ASSOCIATES	1.92%
M	0.72%	BUSINESS	1.87%
D	0.65%	CONSTRUCTION	1.80%
SOCIAL	0.65%	CONSULTANTS	1.76%
J	0.65%	MEDIA	1.69%
BUILDING	0.65%	ENGINEERING	1.61%
ASSOCIATES	0.59%	LONDON	1.60%
CARE	0.59%	CARE	1.45%
DIRECT	0.59%	J	1.45%
CONSULTANTS	0.52%	GLOBAL	1.44%
FINANCIAL	0.52%	INVESTMENTS	1.43%
CONSTRUCTION	0.52%	IT	1.41%
PROJECT	0.46%	PROPERTIES	1.36%
ENERGY	0.46%	BUILDING	1.34%
BUSINESS	0.46%	M	1.30%
MEDICAL	0.46%	ELECTRICAL	1.28%
LEGAL	0.46%	S	1.24%
PROPERTIES	0.46%	INTERNATIONAL	1.23%
INVESTMENTS	0.46%	SYSTEMS	1.23%

## Previous 36 months, excluding companies less than 12 months old

SIC CODE	NUMBER OF COMPANIES	UK COMPANIES
7487 - Other business activities	1,097	60,968
None Supplied	616	202,798
82990 - Other business support service activities not elsewhere classified	252	30,253
70229 - Management consultancy activities other than financial management	41	16,150
99999 - Dormant Company	34	18,336
7414 - Business & management consultancy	29	12,916
9999 - Dormant Company	28	19,765
74909 - Other professional, scientific and technical activities not elsewhere classified	24	7,788
7499 - Non-trading company	20	11,316
62020 - Information technology consultancy activities	18	10,246
5530 - Restaurants	15	4,898
9305 - Other service activities	15	8,740
86900 - Other human health activities	13	4,092
62090 - Other information technology service activities	13	6,996
64999 - Financial intermediation not elsewhere classified	13	2,754
96090 - Other service activities not elsewhere classified	13	10,085
69201 - Accounting and auditing activities	12	3,436
7222 - Other software consultancy and supply	12	7,000
6523 - Other financial intermediation	12	2,056
68100 - Buying and selling of own real estate	10	2,528