

Aylesbury

2011 half year business confidence report



headlines

- Q2 2011 saw a new record in company registrations in Aylesbury when compared to any previous Q2.
- June 2011 saw a new record in company registrations in Aylesbury when compared to any previous June.
- May 2011 saw a new record in company registrations in Aylesbury when compared to any previous May.

contents

new company registrations

closed companies (dissolved)

net company growth

uk company share

director age

director gender

naming trends

sic data

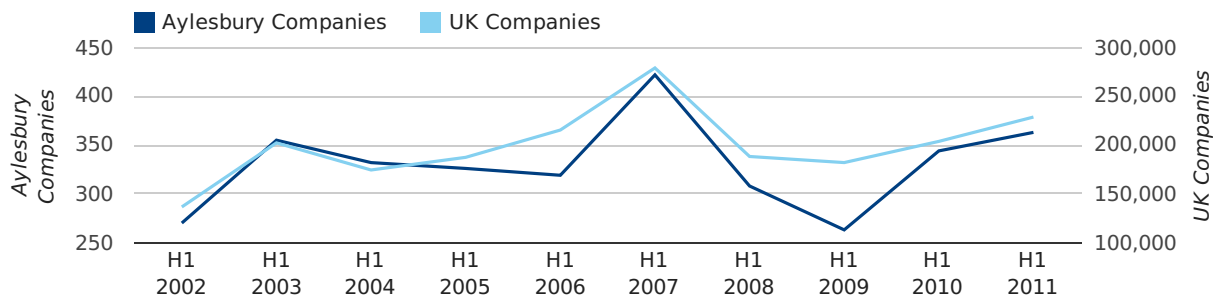
Half Year Data (Jan-Jun 2011)

In the first half of 2011 a total of 363 companies were formed in Aylesbury. This figure is 5.5% higher than last year, which compares badly to the UK wide figure of 12.3%.

The highest total for a first half year in Aylesbury occurred in 2007 when a total of 422 were formed.

HALF YEAR (JAN-JUN)	AYLESBURY	UK
2011	363	228,735
2010	344	203,749
% CHANGE	5.5%	12.3%
RECORD YEAR	2007 (422)	2007 (279,097)

new companies by half year



Quarterly Data (Q2 Apr-Jun 2011)

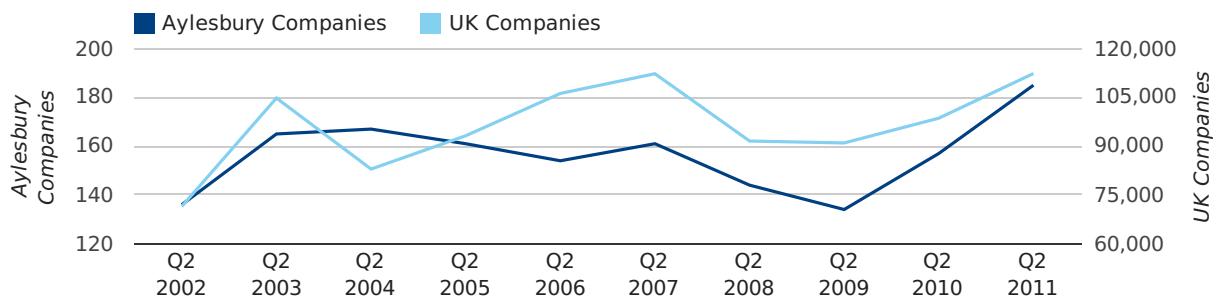
Q2 2011 saw a new record in company registrations in Aylesbury when compared to any previous Q2.

A total of 185 companies were registered in Aylesbury during the second quarter of 2011 (Apr 2011 - Jun 2011).

This figure is an increase of 17.8% versus the same period last year (Q2 2010). This figure compares well to the UK as a whole, which saw an increase of 13.9% against the same period last year.

SECOND QUARTER (APR 2011 - JUN 2011)	AYLESBURY	UK
2011	185	112,344
2010	157	98,612
% CHANGE	17.8%	13.9%
RECORD YEAR	2011 (185)	2011 (112,344)

new companies by quarter



Monthly Data (Apr, May & Jun 2011)

June 2011 saw a new record in company registrations in Aylesbury when compared to any previous June.

May 2011 saw a new record in company registrations in Aylesbury when compared to any previous May.

new companies by month



	APRIL	MAY	JUNE
NEW COMPANIES IN 2011	48	71	66
NEW COMPANIES IN 2010	63	37	57
% CHANGE	-23.8%	91.9%	15.8%
RECORD YEAR	2004 (68)	2011 (71)	2011 (66)

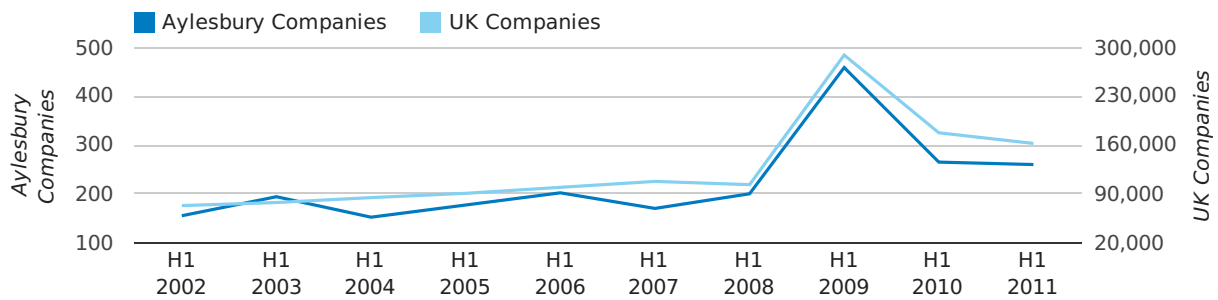
Half Year Data (Jan-Jun 2011)

In the first half of 2011 a total of 260 companies were dissolved in Aylesbury. This figure is 1.9% lower than last year, which compares badly to the UK wide change of -8.6%.

The highest total for a first half year in Aylesbury occurred in 2009 when a total of 459 were closed.

HALF YEAR (JAN-JUN)	AYLESBURY	UK
2011	260	162,310
2010	265	177,631
% CHANGE	-1.9%	-8.6%
RECORD YEAR	2009 (459)	2009 (289,236)

dissolved companies by half year



Quarterly Data (Q2 Apr-Jun 2011)

A total of 128 companies were dissolved in Aylesbury during the second quarter of 2011 (Apr 2011 - Jun 2011).

This figure is a decrease of 5.2% versus the same period last year (Q2 2010). This figure compares poorly to the UK as a whole, which saw a decrease of 24.9% against the same period last year.

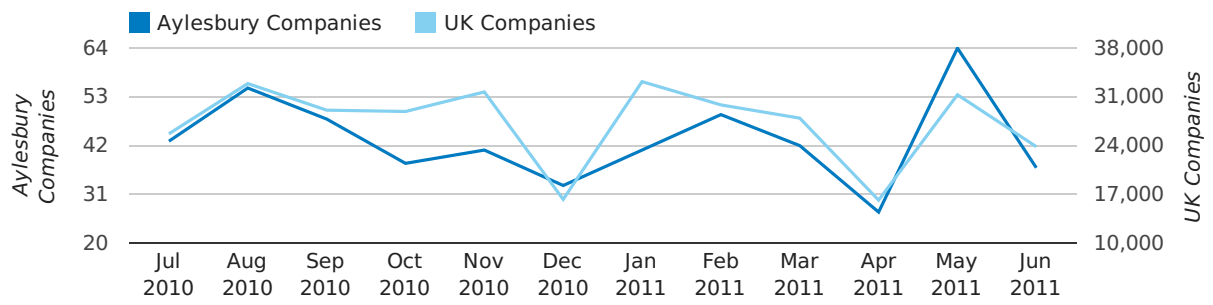
SECOND QUARTER (APR 2011 - JUN 2011)	AYLESBURY	UK
2011	128	71,324
2010	135	94,954
% CHANGE	-5.2%	-24.9%
RECORD YEAR	2009 (272)	2009 (181,176)

dissolved companies by quarter



Monthly Data (Apr, May & Jun 2011)

dissolved companies by month



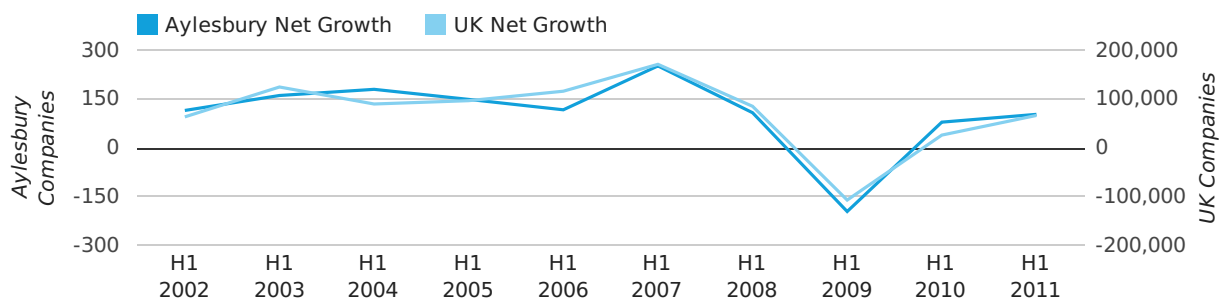
	APRIL	MAY	JUNE
CLOSED COMPANIES IN 2011	27	64	37
CLOSED COMPANIES IN 2010	31	55	49
% CHANGE	-12.9%	16.4%	-24%
RECORD YEAR	2009 (57)	2009 (125)	2009 (90)

Half Year Data (Jan-Jun 2011)

In the first half of 2011 the company register for Aylesbury increased by 103 companies. This figure is 30.4% higher than last year, which compares badly to a UK increase of 154.3%.

HALF YEAR (JAN-JUN)	AYLESBURY	UK
2011	103	66,425
2010	79	26,118
% CHANGE	30.4%	154.3%
RECORD YEAR	2007 (252)	2007 (171,296)

net growth by half year



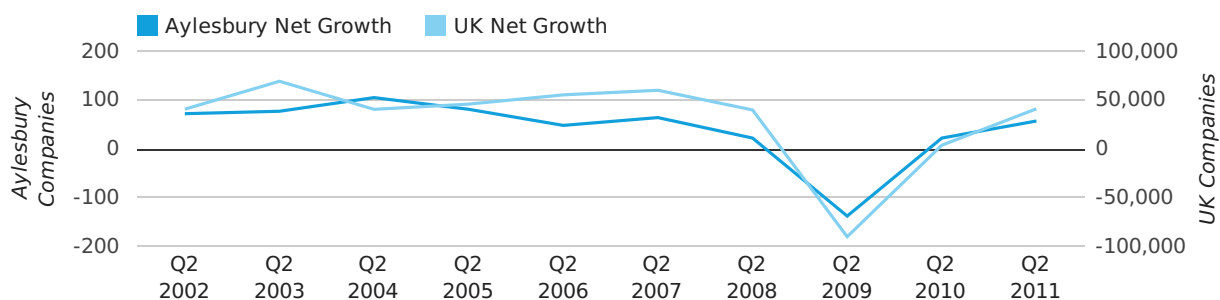
Quarterly Data (Q2 Apr-Jun 2011)

Net company growth for Aylesbury during the second quarter of 2011 (Apr 2011 - Jun 2011) was 57 companies.

This represents an increase of 159.1% on the same period last year.

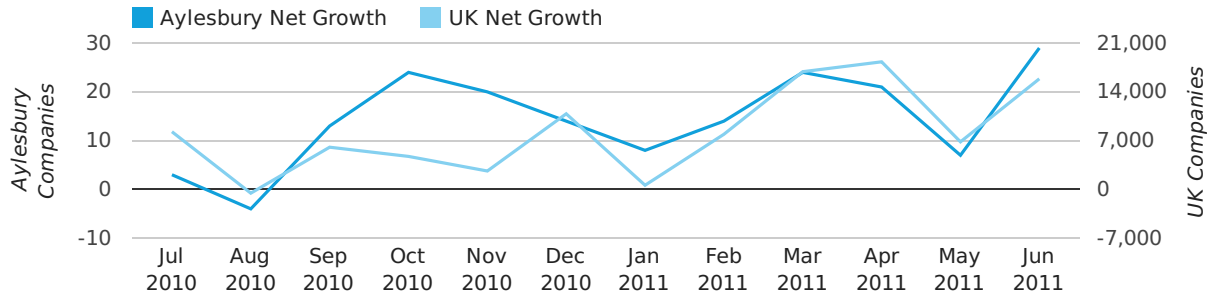
SECOND QUARTER (APR 2011 - JUN 2011)	AYLESBURY	UK
2011	57	41,020
2010	22	3,658
% CHANGE	159.1%	1,021.4%
RECORD YEAR	1998 (108)	2003 (69,274)

net growth by quarter



Monthly Data (Apr, May & Jun 2011)

net growth by month



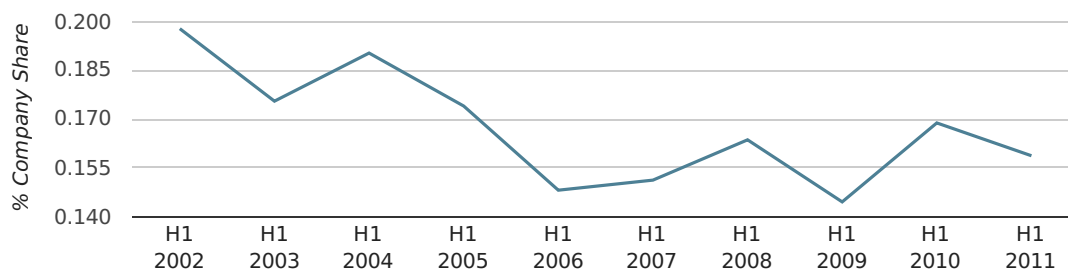
	APRIL	MAY	JUNE
NET GROWTH IN 2011	21	7	29
NET GROWTH IN 2010	32	-18	8
% CHANGE	-34.4%	-138.9%	262.5%
RECORD YEAR	2000 (52)	1998 (41)	2008 (37)

Half Year Data (Jan-Jun 2011)

In the first half of 2011 Aylesbury formed 0.2% of all UK companies. This is the same as the 2010 figure of 0.2%.

HALF YEAR (JAN-JUN)	AYLESBURY
2011	0.2%
2010	0.2%
2009	0.1%
2008	0.2%
2007	0.2%
RECORD YEAR (SINCE 1960)	1995 (0.3%)

company share by half year

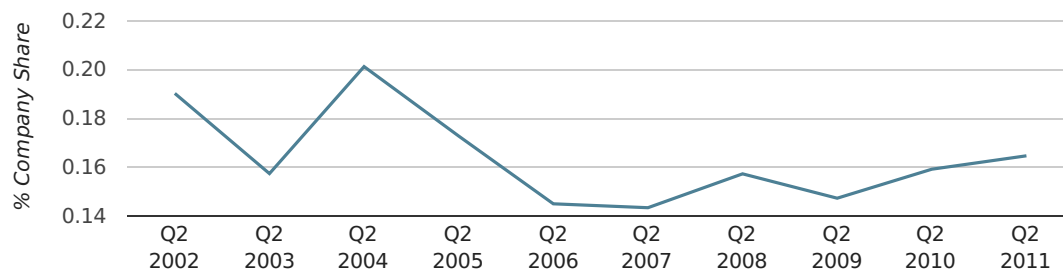


Quarterly Data (Q2 Apr-Jun 2011)

In the second quarter of 2011, Aylesbury formed 0.2% of all UK companies.

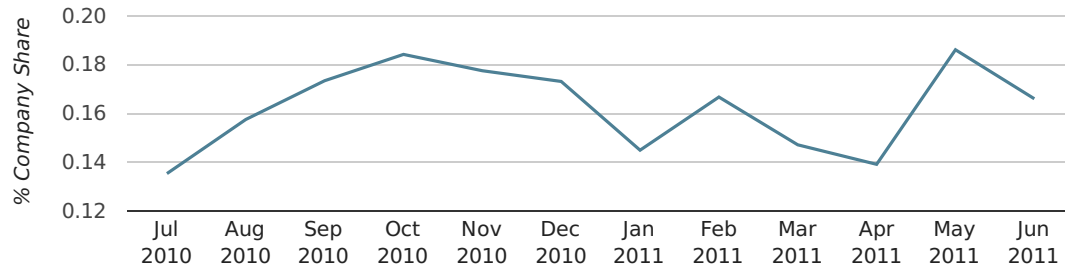
SECOND QUARTER (APR 2011 - JUN 2011)	AYLESBURY
2011	0.2%
2010	0.2%
2009	0.1%
2008	0.2%
2007	0.1%
RECORD YEAR (SINCE 1960)	1984 (0.3%)

company share by quarter



Monthly Data (Apr, May & Jun 2011)

company share by month



	APRIL	MAY	JUNE
UK FORMATION SHARE IN 2011	0.1%	0.2%	0.2%
UK FORMATION SHARE IN 2010	0.2%	0.1%	0.2%
% CHANGE	-26.2%	51.1%	2.6%
RECORD YEAR	1966 (0.6%)	1976 (0.4%)	1963 (0.5%)

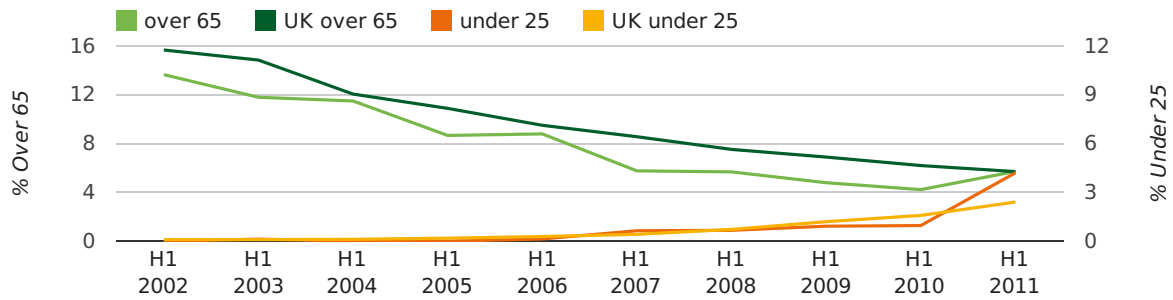
Half Year Data (Jan-Jun 2011)

The average age of a director in the first half of 2011 was 45.1.

The percentage of directors under the age of 25 was 4.2% compared to the UK figure of 3.2%.

The percentage of directors over the age of 65 was 5.7% compared to the UK figure of 4.3%.

director age by half year



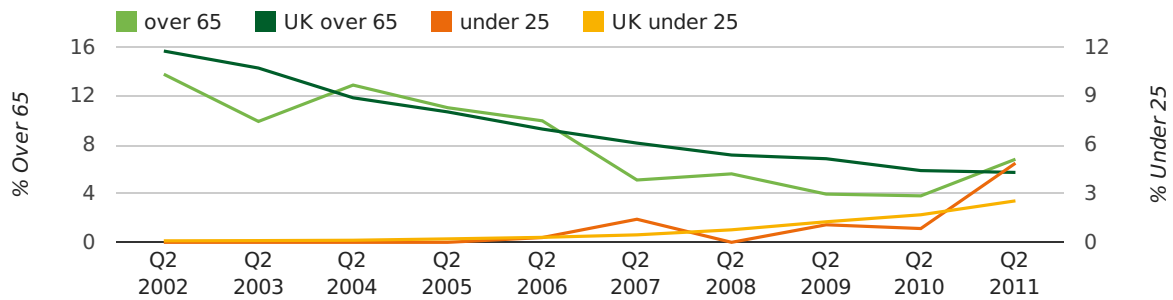
Quarterly Data (Q2 Apr-Jun 2011)

The average age of a director in the second quarter of 2011 was 45.2.

The percentage of directors under the age of 25 was 4.9% compared to the UK figure of 3.4%.

The percentage of directors over the age of 65 was 6.8% compared to the UK figure of 4.3%.

director age by quarter

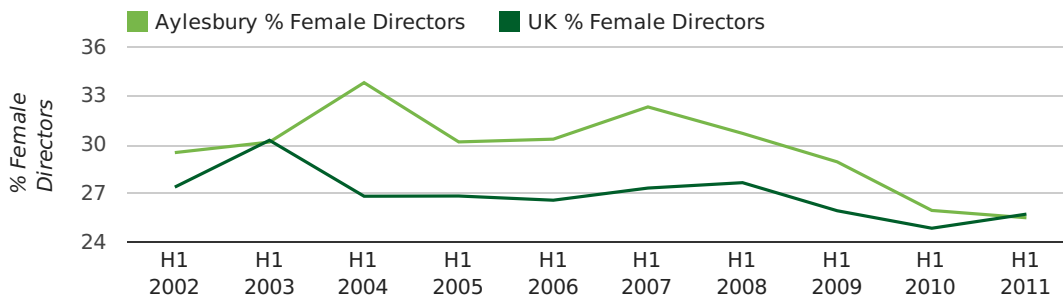


Half Year Data (Jan-Jun 2011)

The record first half year for female directors in Aylesbury was 1861 when 40.0% of all directors were female.

25.5% of all director appointments in Aylesbury in the first half of 2011 were female. This compares to a UK average of 25.7% for the same period.

director gender by half year

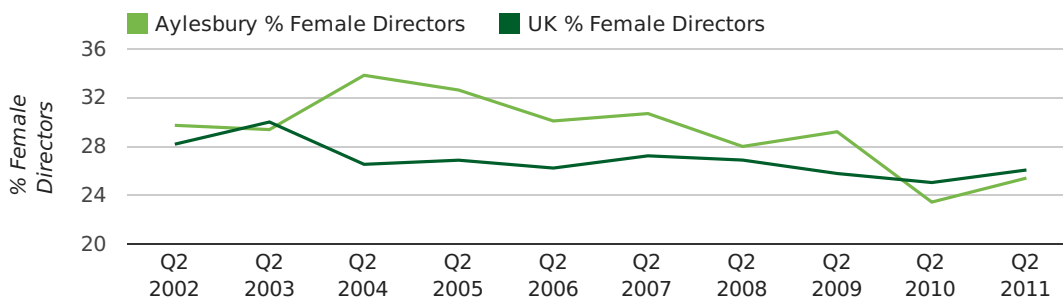


Quarterly Data (Q2 Apr-Jun 2011)

The record second quarter for female directors in Aylesbury was in 1866 when 66.7% of all directors were female.

25.4% of all director appointments in Aylesbury in the second quarter of 2011 were female. This compares to a UK average of 26.1% for the same period.

director gender by quarter



Previous 12 months (Jun 2010-Jun 2011)

Excluding: LIMITED, LTD, &, UK, SERVICES, THE, (UK), AND, LTD., A, LLP, SOLUTIONS, COMPANY, OF.

WORD	PERCENTAGE	UK WORD	UK PERCENTAGE
MANAGEMENT	1.98%	CONSULTING	5.09%
CONSULTING	1.53%	MANAGEMENT	4.86%
ASSOCIATES	1.53%	CONSULTANCY	3.17%
AYLESBURY	1.35%	PROPERTY	2.43%
PROPERTY	1.17%	TRADING	2.05%
CONSULTANCY	0.99%	DESIGN	1.94%
BUSINESS	0.90%	ASSOCIATES	1.92%
CARE	0.72%	BUSINESS	1.87%
ELECTRICAL	0.72%	CONSTRUCTION	1.77%
GREEN	0.63%	CONSULTANTS	1.76%
LONDON	0.63%	MEDIA	1.73%
CONSTRUCTION	0.63%	ENGINEERING	1.67%
J	0.63%	LONDON	1.60%
COMMUNICATIONS	0.54%	GLOBAL	1.46%
SOFTWARE	0.54%	J	1.44%
SUPPORT	0.54%	CARE	1.44%
DEVELOPMENT	0.54%	INVESTMENTS	1.42%
SYSTEMS	0.54%	IT	1.39%
MEDIA	0.54%	BUILDING	1.32%
S	0.54%	PROPERTIES	1.31%
BOUTIQUE	0.54%	ELECTRICAL	1.30%
CONSULTANTS	0.54%	M	1.27%
NETWORK	0.45%	S	1.23%
PLUMBING	0.45%	ENTERPRISES	1.20%
G	0.45%	SYSTEMS	1.20%

Previous 36 months, excluding companies less than 12 months old

SIC CODE	NUMBER OF COMPANIES	UK COMPANIES
None Supplied	250	202,072
7487 - Other business activities	83	60,758
70229 - Management consultancy activities other than financial management	71	16,419
7414 - Business & management consultancy	47	13,053
82990 - Other business support service activities not elsewhere classified	37	30,647
99999 - Dormant Company	32	18,918
9999 - Dormant Company	29	20,111
62020 - Information technology consultancy activities	24	10,545
7222 - Other software consultancy and supply	22	7,143
7499 - Non-trading company	21	10,955
62090 - Other information technology service activities	18	7,095
74990 - Non-trading company	16	8,481
7260 - Other computer related activities	15	7,849
96090 - Other service activities not elsewhere classified	14	10,322
9305 - Other service activities	12	9,063
86220 - Specialists medical practice activities	11	1,246
43210 - Electrical installation	10	3,085
4521 - General construction & civil engineering	9	5,928
62012 - Business and domestic software development	9	3,262
69201 - Accounting and auditing activities	9	3,394