

Banbury

q3 2011 business confidence report



headlines

- September 2011 saw a new record in company registrations in Banbury when compared to any previous September.

contents

new company registrations

closed companies (dissolved)

net company growth

uk company share

director age

director gender

naming trends

sic data

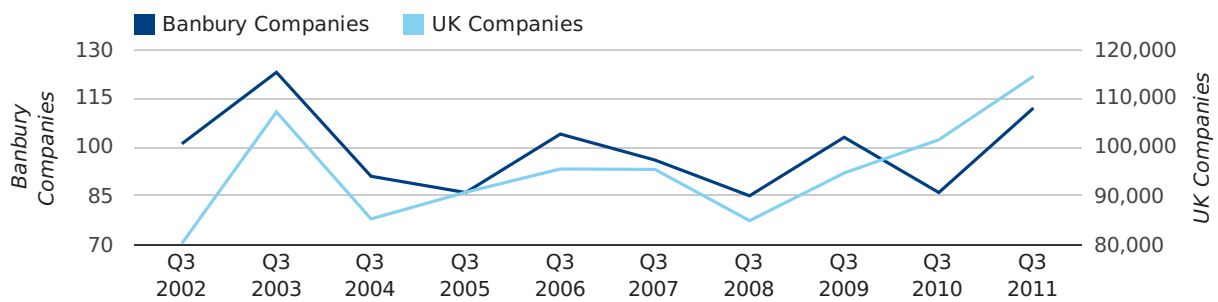
Quarterly Data (Q3 Jul-Sep 2011)

A total of 112 companies were registered in Banbury during the third quarter of 2011 (Jul 2011 - Sep 2011).

This figure is an increase of 30.2% versus the same period last year (Q3 2010). This figure compares well to the UK as a whole, which saw an increase of 12.8% against the same period last year.

THIRD QUARTER (JUL 2011 - SEP 2011)	BANBURY	UK
2011	112	114,512
2010	86	101,492
% CHANGE	30.2%	12.8%
RECORD YEAR	2003 (123)	2011 (114,512)

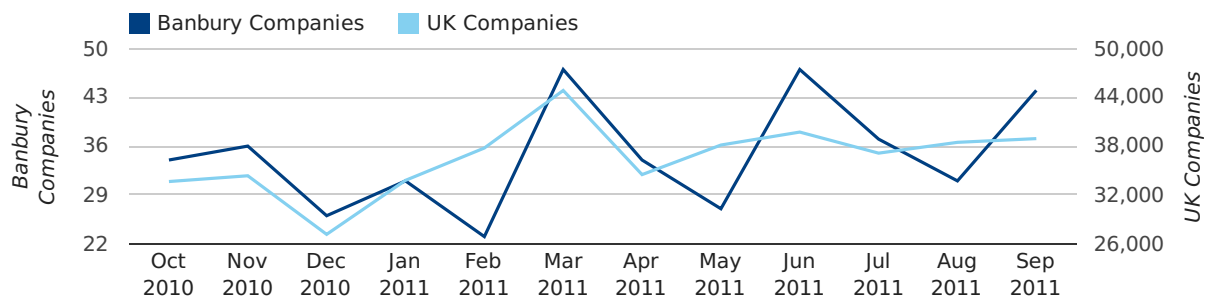
new companies by quarter



Monthly Data (Jul, Aug & Sep 2011)

September 2011 saw a new record in company registrations in Banbury when compared to any previous September.

new companies by month



	JULY	AUGUST	SEPTEMBER
NEW COMPANIES IN 2011	37	31	44
NEW COMPANIES IN 2010	33	20	33
% CHANGE	12.1%	55.0%	33.3%
RECORD YEAR	2004 (44)	2003 (43)	2011 (44)

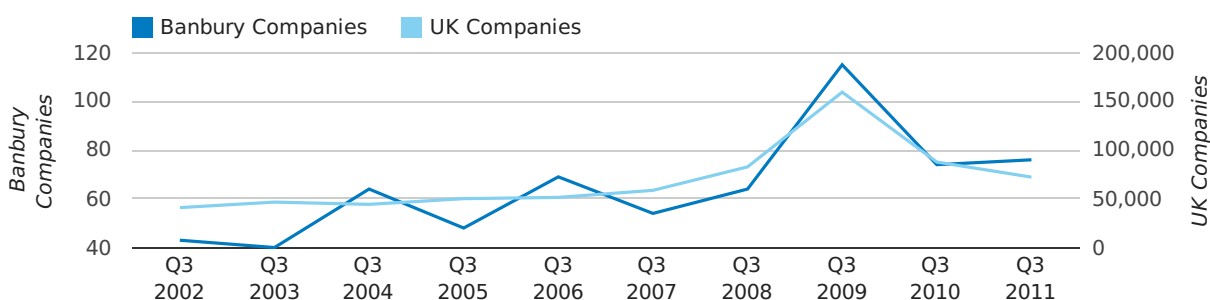
Quarterly Data (Q3 Jul-Sep 2011)

A total of 76 companies were dissolved in Banbury during the third quarter of 2011 (Jul 2011 - Sep 2011).

This figure is an increase of 2.7% versus the same period last year (Q3 2010). This figure compares poorly to the UK as a whole, which saw a decrease of 17.6% against the same period last year.

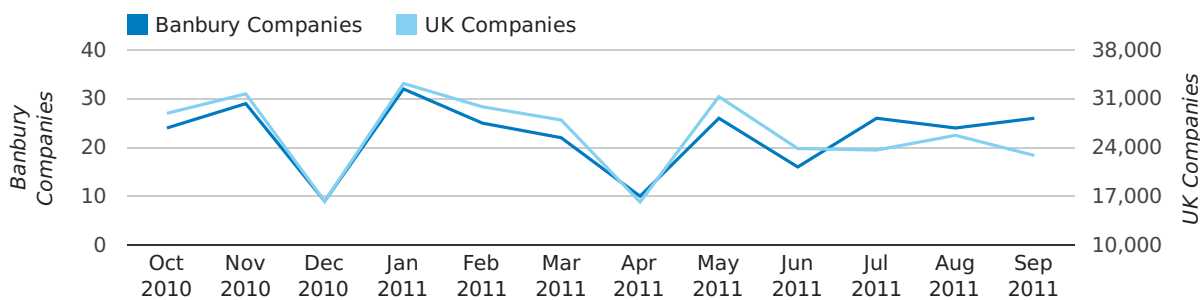
THIRD QUARTER (JUL 2011 - SEP 2011)	BANBURY	UK
2011	76	72,230
2010	74	87,705
% CHANGE	2.7%	-17.6%
RECORD YEAR	2009 (115)	2009 (159,401)

dissolved companies by quarter



Monthly Data (Jul, Aug & Sep 2011)

dissolved companies by month



	JULY	AUGUST	SEPTEMBER
CLOSED COMPANIES IN 2011	26	24	26
CLOSED COMPANIES IN 2010	21	29	24
% CHANGE	23.8%	-17.2%	8%
RECORD YEAR	2006 (28)	2008 (51)	2009 (53)

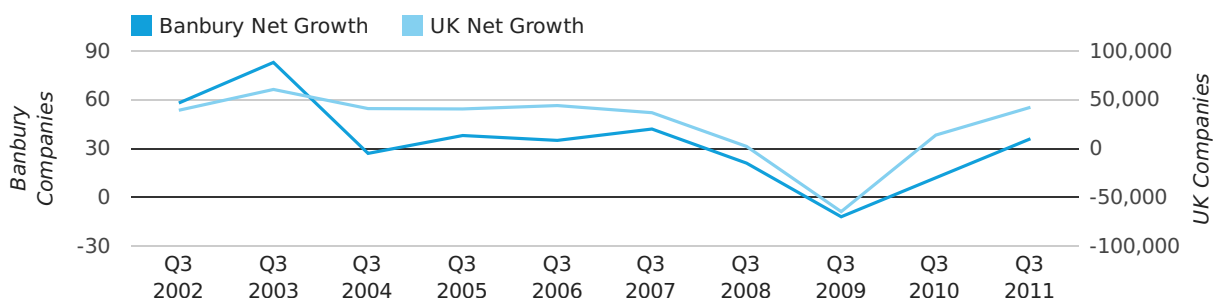
Quarterly Data (Q3 Jul-Sep 2011)

Net company growth for Banbury during the third quarter of 2011 (Jul 2011 - Sep 2011) was 36 companies.

This represents an increase of 200.0% on the same period last year.

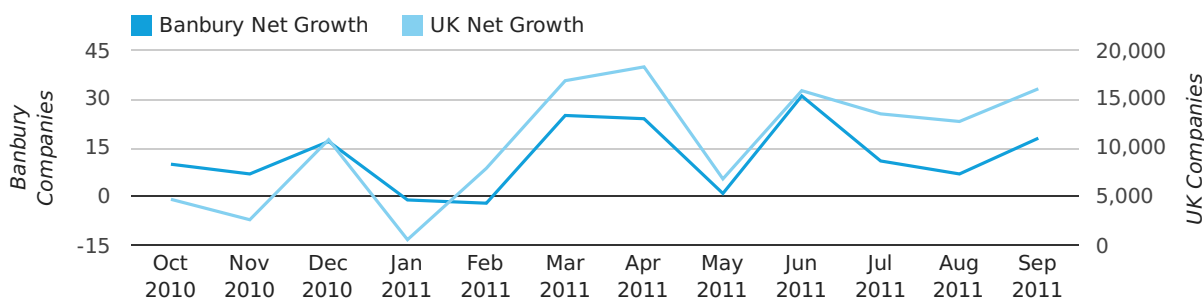
THIRD QUARTER (JUL 2011 - SEP 2011)	BANBURY	UK
2011	36	42,282
2010	12	13,787
% CHANGE	200.0%	206.7%
RECORD YEAR	2003 (83)	2003 (60,597)

net growth by quarter



Monthly Data (Jul, Aug & Sep 2011)

net growth by month



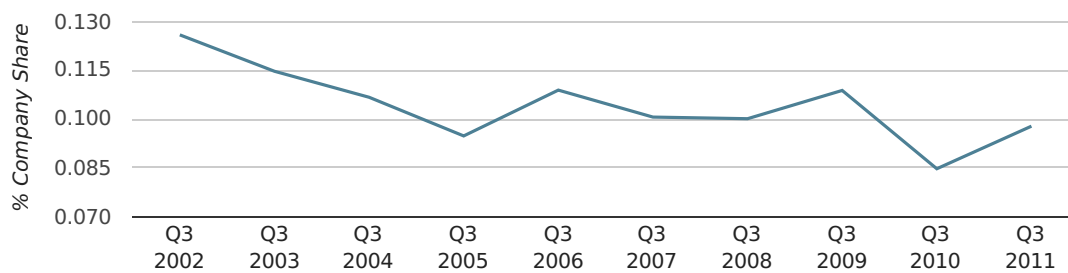
	JULY	AUGUST	SEPTEMBER
NET GROWTH IN 2011	11	7	18
NET GROWTH IN 2010	12	-9	9
% CHANGE	-8.3%	-177.8%	100.0%
RECORD YEAR	2004 (24)	2003 (35)	2003 (29)

Quarterly Data (Q3 Jul-Sep 2011)

In the third quarter of 2011, Banbury formed 0.1% of all UK companies.

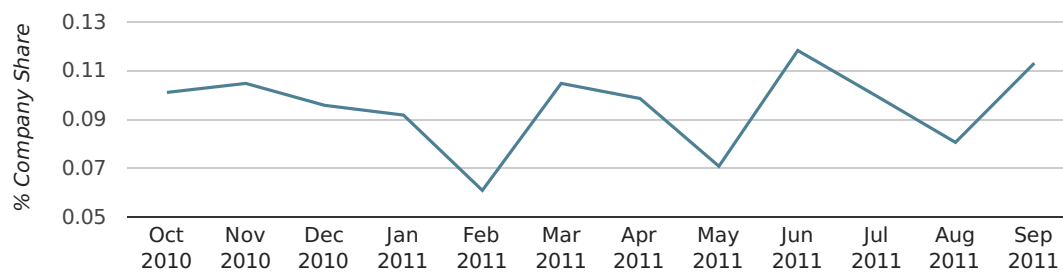
THIRD QUARTER (JUL 2011 - SEP 2011)	BANBURY
2011	0.1%
2010	0.1%
2009	0.1%
2008	0.1%
2007	0.1%
RECORD YEAR (SINCE 1960)	1963 (0.3%)

company share by quarter



Monthly Data (Jul, Aug & Sep 2011)

company share by month



	JULY	AUGUST	SEPTEMBER
UK FORMATION SHARE IN 2011	0.1%	0.1%	0.1%
UK FORMATION SHARE IN 2010	0.1%	0.1%	0.1%
% CHANGE	2.6%	30.4%	20.4%
RECORD YEAR	1962 (0.3%)	1963 (0.3%)	1966 (0.3%)

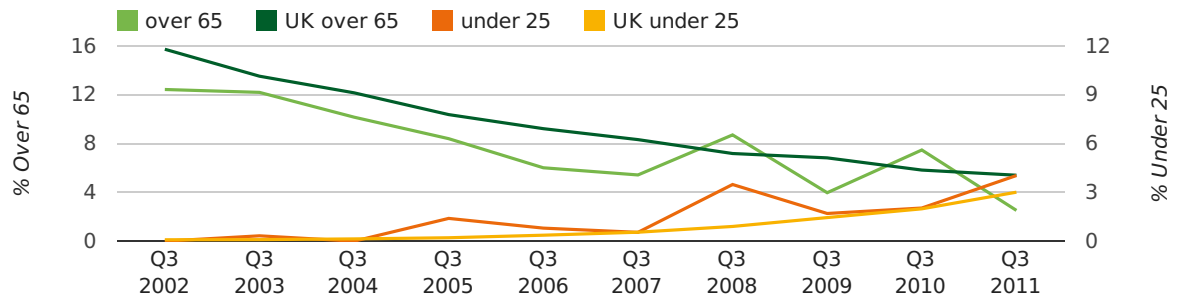
Quarterly Data (Q3 Jul-Sep 2011)

The average age of a director in the third quarter of 2011 was 46.5.

The percentage of directors under the age of 25 was 4.0% compared to the UK figure of 4.0%.

The percentage of directors over the age of 65 was 2.5% compared to the UK figure of 4.1%.

director age by quarter

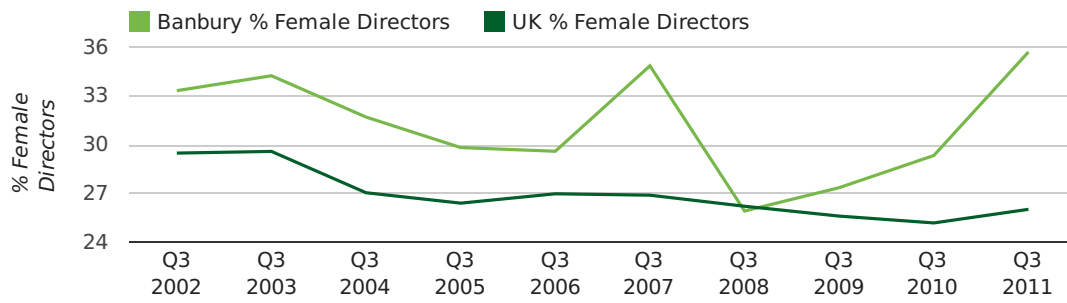


Quarterly Data (Q3 Jul-Sep 2011)

The record third quarter for female directors in Banbury was in 1862 when 50.0% of all directors were female.

35.7% of all director appointments in Banbury in the third quarter of 2011 were female. This compares to a UK average of 26.0% for the same period.

director gender by quarter



Previous 12 months (Sep 2010-Sep 2011)

Excluding: LIMITED, LTD, &, UK, SERVICES, THE, (UK), AND, LTD., A, LLP, SOLUTIONS, COMPANY, OF.

WORD	PERCENTAGE	UK WORD	UK PERCENTAGE
MANAGEMENT	1.87%	CONSULTING	5.11%
BANBURY	1.34%	MANAGEMENT	4.75%
CONSULTANCY	1.34%	CONSULTANCY	3.19%
CONSULTING	1.07%	PROPERTY	2.41%
OXFORD	0.94%	TRADING	2.06%
MEDIA	0.80%	DESIGN	1.94%
SCHOOL	0.80%	ASSOCIATES	1.85%
DESIGN	0.80%	BUSINESS	1.82%
CONSULTANTS	0.67%	CONSULTANTS	1.76%
ENGINEERING	0.67%	ENGINEERING	1.74%
CATERING	0.67%	MEDIA	1.72%
EVENTS	0.53%	CONSTRUCTION	1.72%
ONLINE	0.53%	LONDON	1.63%
ASSOCIATES	0.53%	J	1.47%
BUSINESS	0.53%	GLOBAL	1.46%
B	0.53%	INVESTMENTS	1.43%
PARTNERS	0.53%	CARE	1.42%
FINANCIAL	0.40%	IT	1.38%
CARE	0.40%	BUILDING	1.30%
HEALTH	0.40%	PROPERTIES	1.28%
ENERGY	0.40%	ELECTRICAL	1.27%
2	0.40%	M	1.25%
M	0.40%	ENERGY	1.22%
SECURITY	0.40%	TRAINING	1.21%
DEVELOPMENTS	0.40%	S	1.21%

Previous 36 months, excluding companies less than 12 months old

SIC CODE	NUMBER OF COMPANIES	UK COMPANIES
None Supplied	154	204,493
7487 - Other business activities	51	65,177
70229 - Management consultancy activities other than financial management	47	15,760
82990 - Other business support service activities not elsewhere classified	32	29,245
7414 - Business & management consultancy	26	14,755
7499 - Non-trading company	16	11,543
62020 - Information technology consultancy activities	16	10,137
74990 - Non-trading company	15	8,064
99999 - Dormant Company	15	18,281
7222 - Other software consultancy and supply	12	8,345
74909 - Other professional, scientific and technical activities not elsewhere classified	10	7,551
96090 - Other service activities not elsewhere classified	9	10,018
45200 - Maintenance and repair of motor vehicles	8	2,179
9999 - Dormant Company	7	22,587
7260 - Other computer related activities	6	8,686
5263 - Other non-store retail sale	6	2,087
62090 - Other information technology service activities	6	6,798
69201 - Accounting and auditing activities	6	3,271
5530 - Restaurants	6	5,640
41202 - Construction of domestic buildings	6	2,164