

# Burton-On-Trent

2011 half year business confidence report



## headlines

- The first half of 2011 saw a new record in company registrations in Burton-On-Trent when compared to any previous first half year.
- The first half of 2011 was a record first half year for company registrations in Burton-On-Trent when compared to any half year in history.
- Q2 2011 saw a new record in company registrations in Burton-On-Trent when compared to any previous Q2.
- June 2011 saw a new record in company registrations in Burton-On-Trent when compared to any previous June.
- June 2011 saw a new record in net growth in Burton-On-Trent when compared to any previous June.

## contents

new company registrations

closed companies (dissolved)

net company growth

uk company share

director age

director gender

naming trends

sic data

### Half Year Data (Jan-Jun 2011)

The first half of 2011 saw a new record in company registrations in Burton-On-Trent when compared to any previous first half year.

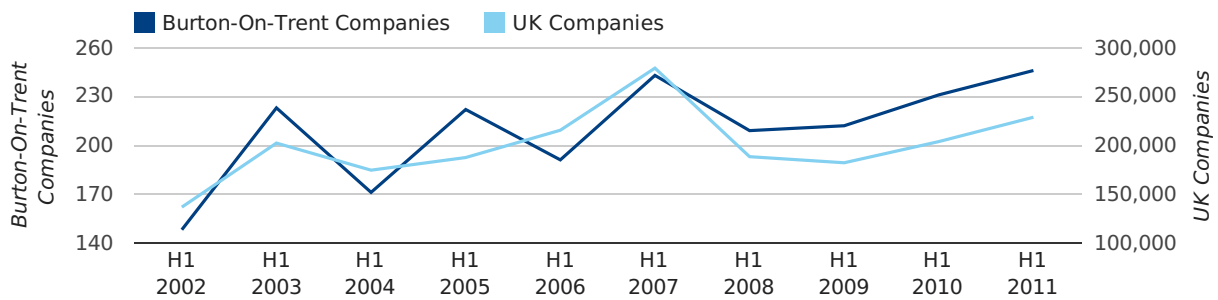
The first half of 2011 was a record first half year for company registrations in Burton-On-Trent when compared to any half year in history.

In the first half of 2011 a total of 246 companies were formed in Burton-On-Trent. This figure is 6.5% higher than last year, which compares badly to the UK wide figure of 12.3%.

The highest total for a first half year in Burton-On-Trent occurred in 2011 when a total of 246 were formed.

HALF YEAR (JAN-JUN)	BURTON-ON-TRENT	UK
2011	246	228,735
2010	231	203,749
% CHANGE	6.5%	12.3%
RECORD YEAR	2011 (246)	2007 (279,097)

### new companies by half year



## Quarterly Data (Q2 Apr-Jun 2011)

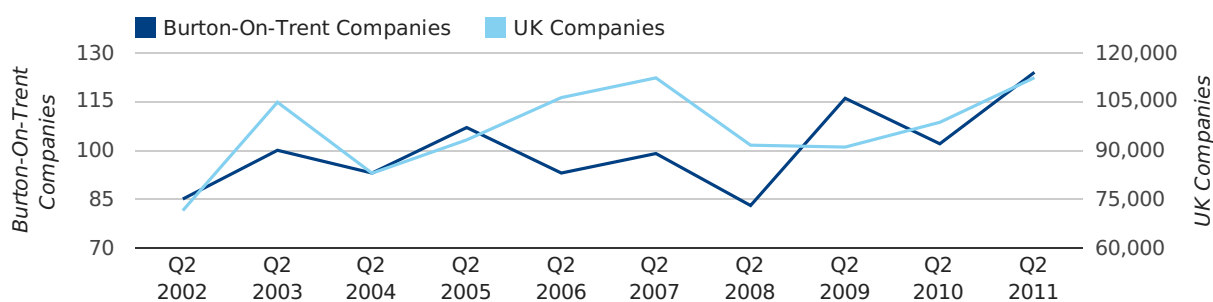
Q2 2011 saw a new record in company registrations in Burton-On-Trent when compared to any previous Q2.

A total of 124 companies were registered in Burton-On-Trent during the second quarter of 2011 (Apr 2011 - Jun 2011).

This figure is an increase of 21.6% versus the same period last year (Q2 2010). This figure compares well to the UK as a whole, which saw an increase of 13.9% against the same period last year.

SECOND QUARTER (APR 2011 - JUN 2011)	BURTON-ON-TRENT	UK
2011	124	112,344
2010	102	98,612
% CHANGE	21.6%	13.9%
RECORD YEAR	2011 (124)	2011 (112,344)

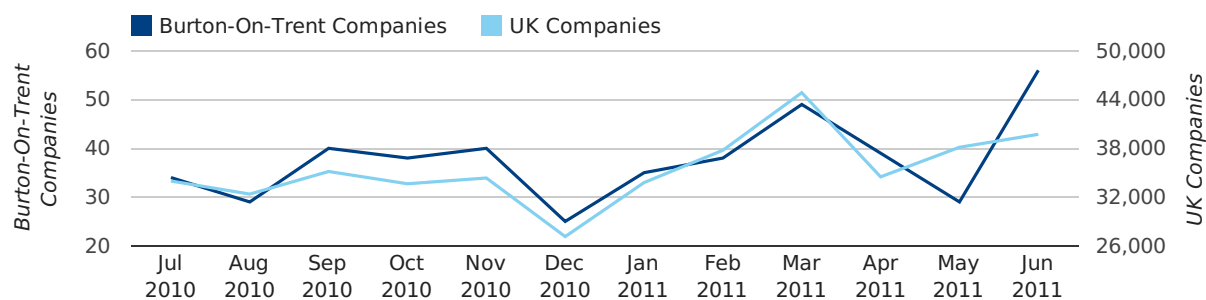
### new companies by quarter



## Monthly Data (Apr, May & Jun 2011)

June 2011 saw a new record in company registrations in Burton-On-Trent when compared to any previous June.

### new companies by month



	APRIL	MAY	JUNE
NEW COMPANIES IN 2011	39	29	56
NEW COMPANIES IN 2010	41	21	40
% CHANGE	-4.9%	38.1%	40.0%
RECORD YEAR	2009 (48)	2005 (35)	2011 (56)

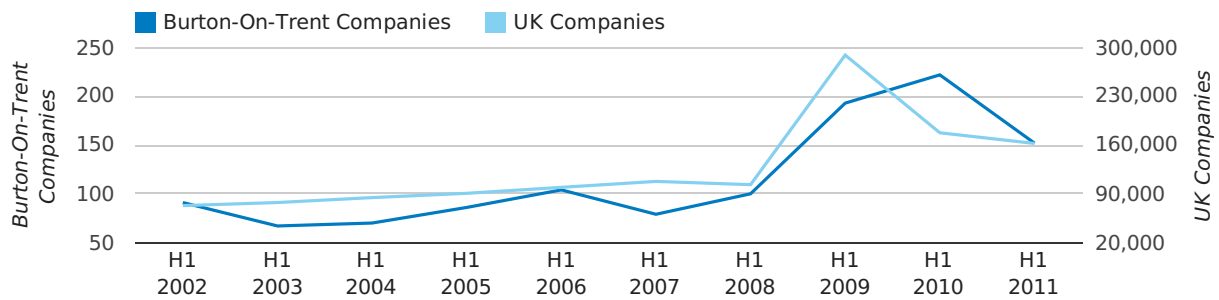
### Half Year Data (Jan-Jun 2011)

In the first half of 2011 a total of 152 companies were dissolved in Burton-On-Trent. This figure is 31.5% lower than last year, which compares well to the UK wide change of -8.6%.

The highest total for a first half year in Burton-On-Trent occurred in 2010 when a total of 222 were closed.

HALF YEAR (JAN-JUN)	BURTON-ON-TRENT	UK
2011	152	162,310
2010	222	177,631
% CHANGE	-31.5%	-8.6%
RECORD YEAR	2010 (222)	2009 (289,236)

### dissolved companies by half year



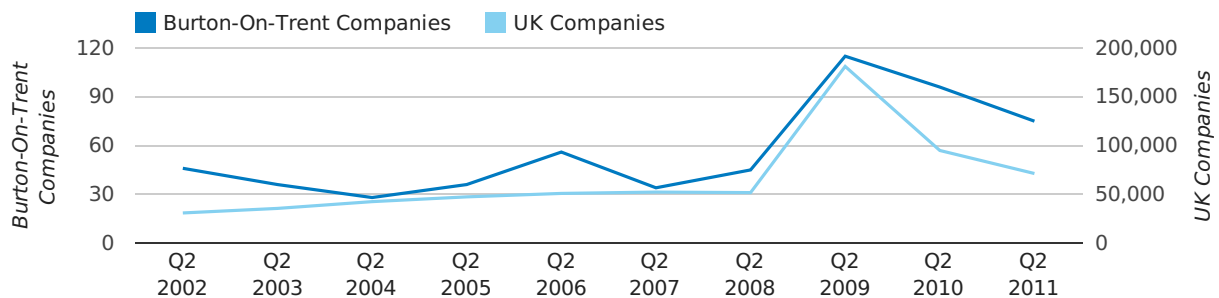
### Quarterly Data (Q2 Apr-Jun 2011)

A total of 75 companies were dissolved in Burton-On-Trent during the second quarter of 2011 (Apr 2011 - Jun 2011).

This figure is a decrease of 21.9% versus the same period last year (Q2 2010). This figure compares poorly to the UK as a whole, which saw a decrease of 24.9% against the same period last year.

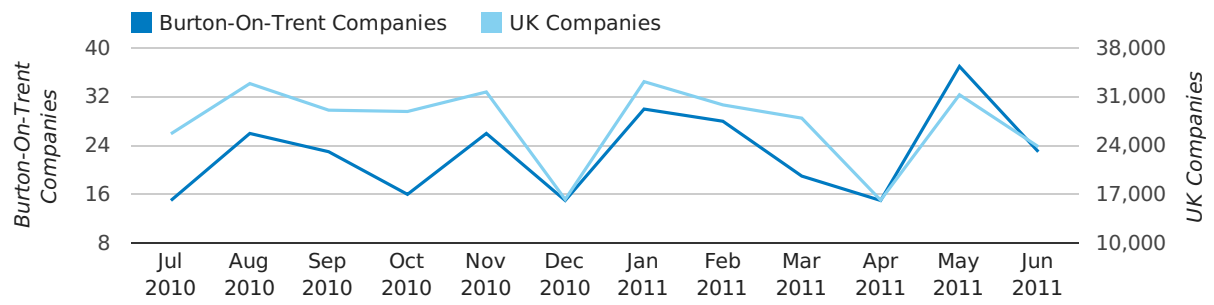
SECOND QUARTER (APR 2011 - JUN 2011)	BURTON-ON-TRENT	UK
2011	75	71,324
2010	96	94,954
% CHANGE	-21.9%	-24.9%
RECORD YEAR	2009 (115)	2009 (181,176)

### dissolved companies by quarter



# Monthly Data (Apr, May & Jun 2011)

## dissolved companies by month



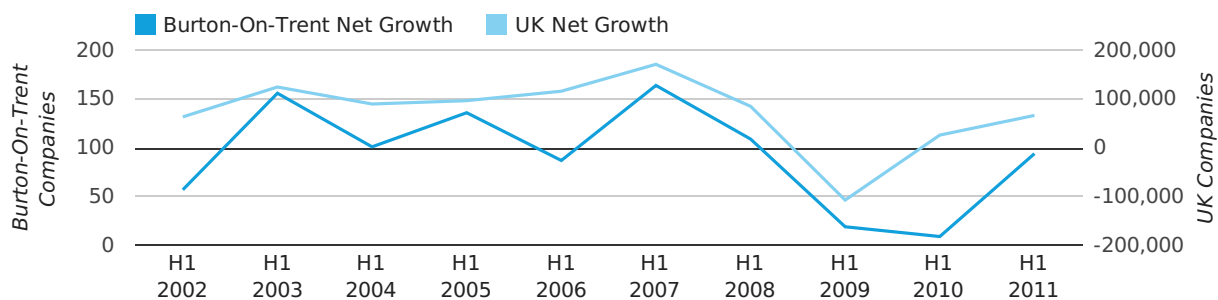
	APRIL	MAY	JUNE
CLOSED COMPANIES IN 2011	15	37	23
CLOSED COMPANIES IN 2010	24	42	30
% CHANGE	-37.5%	-11.9%	-23%
RECORD YEAR	2009 (31)	2010 (42)	2009 (43)

### Half Year Data (Jan-Jun 2011)

In the first half of 2011 the company register for Burton-On-Trent increased by 94 companies. This figure is 944.4% higher than last year, which compares well to a UK increase of 154.3%.

HALF YEAR (JAN-JUN)	BURTON-ON-TRENT	UK
2011	94	66,425
2010	9	26,118
% CHANGE	944.4%	154.3%
RECORD YEAR	2007 (164)	2007 (171,296)

### net growth by half year



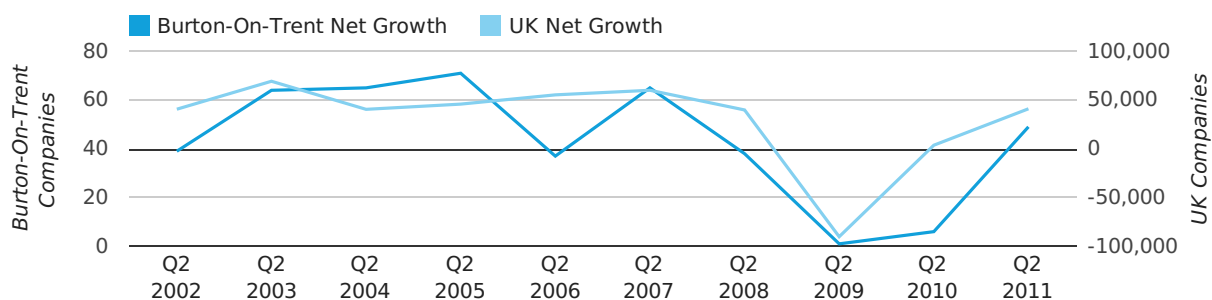
### Quarterly Data (Q2 Apr-Jun 2011)

Net company growth for Burton-On-Trent during the second quarter of 2011 (Apr 2011 - Jun 2011) was 49 companies.

This represents an increase of 716.7% on the same period last year.

SECOND QUARTER (APR 2011 - JUN 2011)	BURTON-ON-TRENT	UK
2011	49	41,020
2010	6	3,658
% CHANGE	716.7%	1,021.4%
RECORD YEAR	2005 (71)	2003 (69,274)

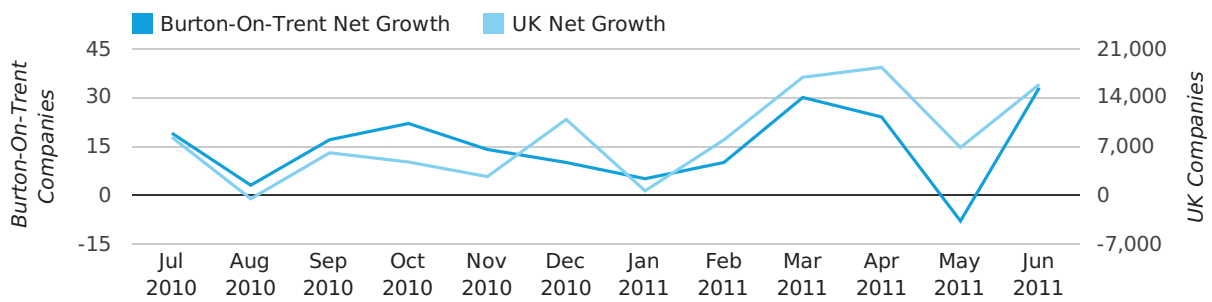
### net growth by quarter



## Monthly Data (Apr, May & Jun 2011)

June 2011 saw a new record in net growth in Burton-On-Trent when compared to any previous June.

### net growth by month



	APRIL	MAY	JUNE
NET GROWTH IN 2011	24	-8	33
NET GROWTH IN 2010	17	-21	10
% CHANGE	41.2%	-61.9%	230.0%
RECORD YEAR	2005 (31)	2005 (24)	2011 (33)

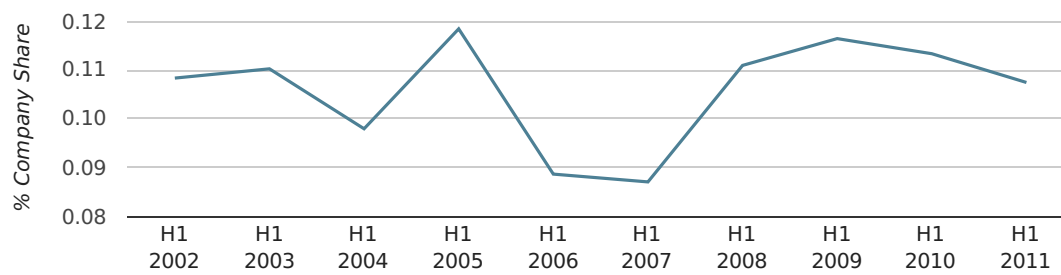


### Half Year Data (Jan-Jun 2011)

In the first half of 2011 Burton-On-Trent formed 0.1% of all UK companies. This is the same as the 2010 figure of 0.1%.

HALF YEAR (JAN-JUN)	BURTON-ON-TRENT
2011	0.1%
2010	0.1%
2009	0.1%
2008	0.1%
2007	0.1%
RECORD YEAR (SINCE 1960)	1965 (0.3%)

#### company share by half year

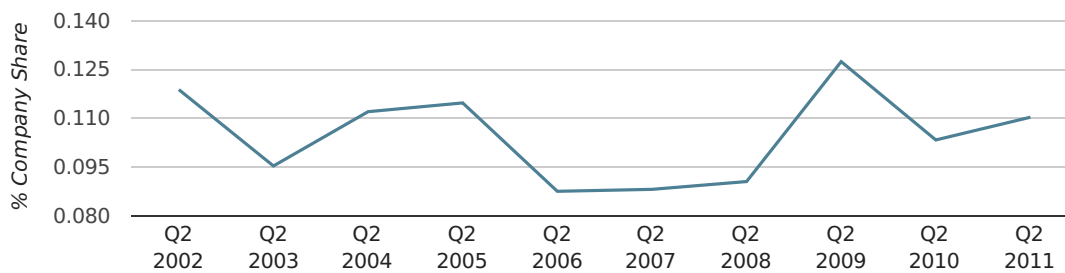


### Quarterly Data (Q2 Apr-Jun 2011)

In the second quarter of 2011, Burton-On-Trent formed 0.1% of all UK companies.

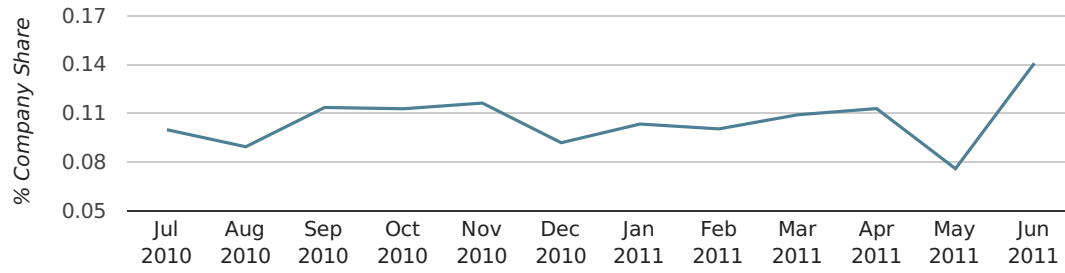
SECOND QUARTER (APR 2011 - JUN 2011)	BURTON-ON-TRENT
2011	0.1%
2010	0.1%
2009	0.1%
2008	0.1%
2007	0.1%
RECORD YEAR (SINCE 1960)	1963 (0.3%)

#### company share by quarter



# Monthly Data (Apr, May & Jun 2011)

## company share by month



	APRIL	MAY	JUNE
UK FORMATION SHARE IN 2011	0.1%	0.1%	0.1%
UK FORMATION SHARE IN 2010	0.1%	0.1%	0.1%
% CHANGE	-7.9%	8.9%	24.1%
RECORD YEAR	1963 (0.5%)	1962 (0.5%)	1969 (0.4%)

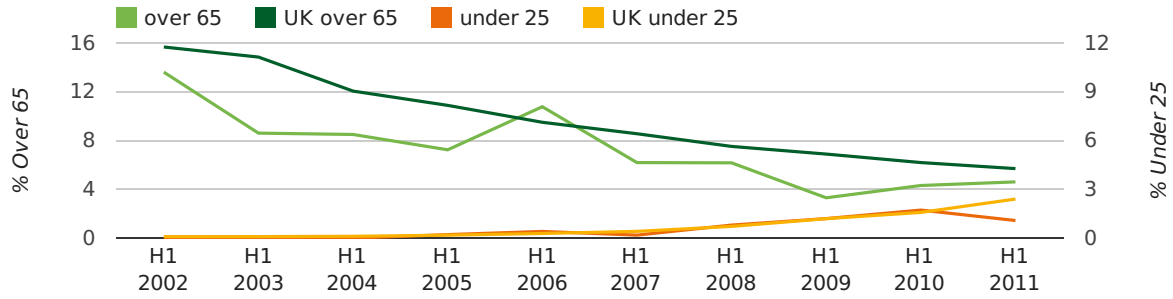
### Half Year Data (Jan-Jun 2011)

The average age of a director in the first half of 2011 was 46.1.

The percentage of directors under the age of 25 was 1.1% compared to the UK figure of 3.2%.

The percentage of directors over the age of 65 was 4.6% compared to the UK figure of 4.3%.

#### director age by half year



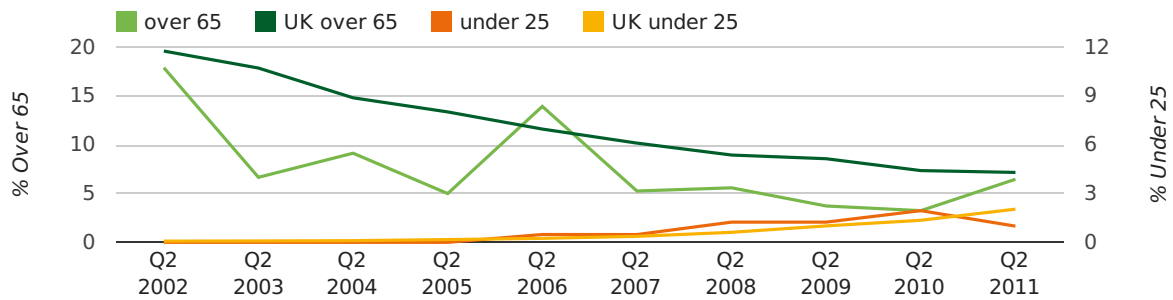
### Quarterly Data (Q2 Apr-Jun 2011)

The average age of a director in the second quarter of 2011 was 46.5.

The percentage of directors under the age of 25 was 1.0% compared to the UK figure of 3.4%.

The percentage of directors over the age of 65 was 6.5% compared to the UK figure of 4.3%.

#### director age by quarter

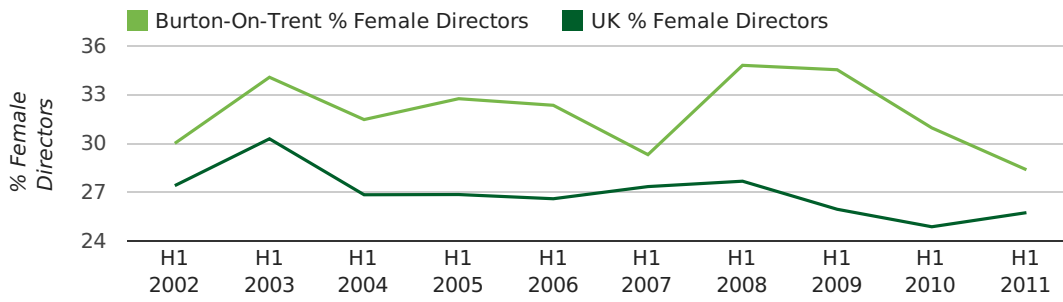


### Half Year Data (Jan-Jun 2011)

The record first half year for female directors in Burton-On-Trent was 1861 when 40.0% of all directors were female.

28.4% of all director appointments in Burton-On-Trent in the first half of 2011 were female. This compares to a UK average of 25.7% for the same period.

#### director gender by half year

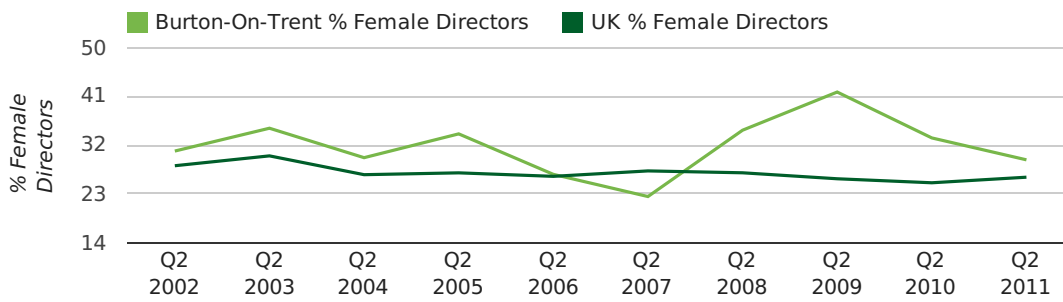


### Quarterly Data (Q2 Apr-Jun 2011)

The record second quarter for female directors in Burton-On-Trent was in 1866 when 66.7% of all directors were female.

29.3% of all director appointments in Burton-On-Trent in the second quarter of 2011 were female. This compares to a UK average of 26.1% for the same period.

#### director gender by quarter



## Previous 12 months (Jun 2010-Jun 2011)

Excluding: LIMITED, LTD, &amp;, UK, SERVICES, THE, (UK), AND, LTD., A, LLP, SOLUTIONS, COMPANY, OF.

WORD	PERCENTAGE	UK WORD	UK PERCENTAGE
ENGINEERING	1.36%	CONSULTING	5.09%
BURTON	1.24%	MANAGEMENT	4.86%
CONSULTANCY	1.24%	CONSULTANCY	3.17%
ELECTRICAL	1.12%	PROPERTY	2.43%
(MIDLANDS)	0.99%	TRADING	2.05%
M	0.99%	DESIGN	1.94%
(BURTON)	0.99%	ASSOCIATES	1.92%
CONSULTING	0.99%	BUSINESS	1.87%
CARE	0.99%	CONSTRUCTION	1.77%
S	0.87%	CONSULTANTS	1.76%
PROPERTIES	0.74%	MEDIA	1.73%
TRAINING	0.74%	ENGINEERING	1.67%
ASSOCIATES	0.74%	LONDON	1.60%
R	0.74%	GLOBAL	1.46%
J	0.74%	J	1.44%
DEVELOPMENTS	0.74%	CARE	1.44%
BUSINESS	0.62%	INVESTMENTS	1.42%
HOUSE	0.62%	IT	1.39%
HOMES	0.62%	BUILDING	1.32%
SON	0.62%	PROPERTIES	1.31%
MANAGEMENT	0.62%	ELECTRICAL	1.30%
HEALTH	0.50%	M	1.27%
PUB	0.50%	S	1.23%
CAR	0.50%	ENTERPRISES	1.20%
SYSTEMS	0.50%	SYSTEMS	1.20%

## Previous 36 months, excluding companies less than 12 months old

SIC CODE	NUMBER OF COMPANIES	UK COMPANIES
None Supplied	183	202,072
7487 - Other business activities	50	60,758
74909 - Other professional, scientific and technical activities not elsewhere classified	36	7,835
70229 - Management consultancy activities other than financial management	22	16,419
9999 - Dormant Company	18	20,111
82990 - Other business support service activities not elsewhere classified	16	30,647
99999 - Dormant Company	13	18,918
96090 - Other service activities not elsewhere classified	12	10,322
86900 - Other human health activities	10	4,154
62020 - Information technology consultancy activities	9	10,545
7414 - Business & management consultancy	9	13,053
45200 - Maintenance and repair of motor vehicles	8	2,257
7260 - Other computer related activities	8	7,849
96020 - Hairdressing and other beauty treatment	7	2,091
74990 - Non-trading company	7	8,481
49410 - Freight transport by road	7	2,142
47990 - Other retail sale not in stores, stalls or markets	6	2,324
7499 - Non-trading company	6	10,955
4525 - Other special trades construction	6	1,676
4521 - General construction & civil engineering	6	5,928