

Cannock

q1 2011 business confidence report



headlines

- February 2011 saw a new record in company registrations in Cannock when compared to any previous February.
- Q1 2011 saw a new record in company closures in Cannock when compared to any previous Q1.
- February 2011 saw a new record in company closures in Cannock when compared to any previous February.

contents

new company registrations

closed companies (dissolved)

net company growth

uk company share

director age

director gender

naming trends

sic data

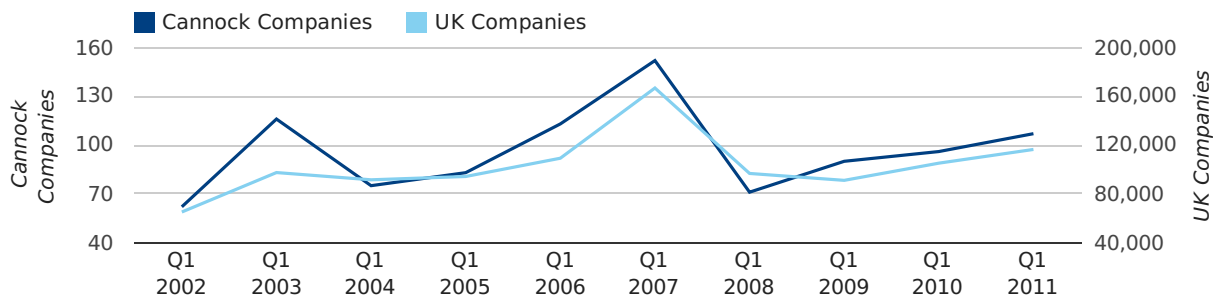
Quarterly Data (Q1 Jan-Mar 2011)

A total of 107 companies were registered in Cannock during the first quarter of 2011 (Jan 2011 - Mar 2011).

This figure is an increase of 11.5% versus the same period last year (Q1 2010). This figure compares equally to the UK as a whole, which saw an increase of 10.7% against the same period last year.

| FIRST QUARTER (JAN 2011 - MAR 2011) | CANNOCK | UK |
|-------------------------------------|------------|----------------|
| 2011 | 107 | 116,391 |
| 2010 | 96 | 105,137 |
| % CHANGE | 11.5% | 10.7% |
| RECORD YEAR | 2007 (152) | 2007 (166,814) |

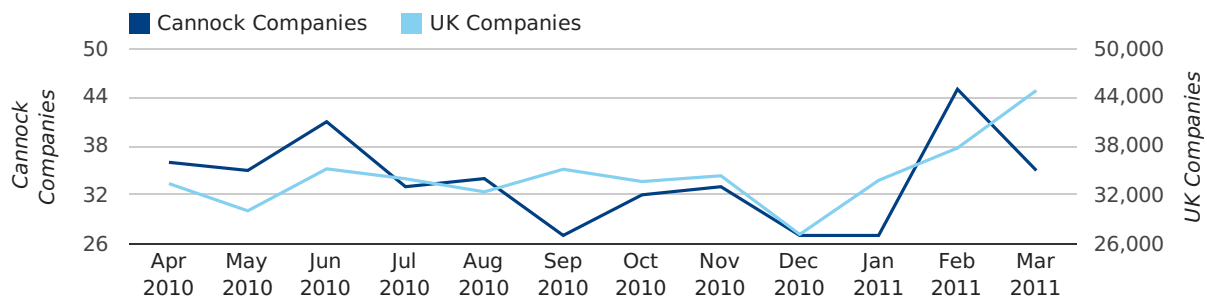
new companies by quarter



Monthly Data (Jan, Feb & Mar 2011)

February 2011 saw a new record in company registrations in Cannock when compared to any previous February.

new companies by month



| | JANUARY | FEBRUARY | MARCH |
|-----------------------|-----------|-----------|-----------|
| NEW COMPANIES IN 2011 | 27 | 45 | 35 |
| NEW COMPANIES IN 2010 | 26 | 34 | 36 |
| % CHANGE | 3.8% | 32.4% | -2.8% |
| RECORD YEAR | 2007 (51) | 2011 (45) | 2007 (65) |

Quarterly Data (Q1 Jan-Mar 2011)

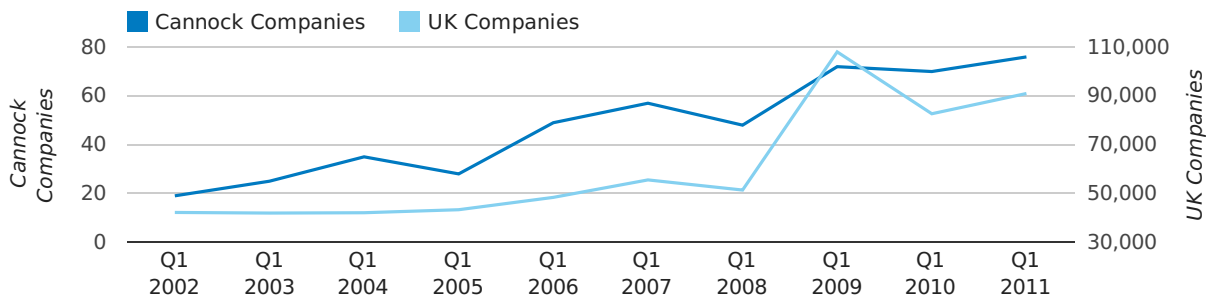
Q1 2011 saw a new record in company closures in Cannock when compared to any previous Q1.

A total of 76 companies were dissolved in Cannock during the first quarter of 2011 (Jan 2011 - Mar 2011).

This figure is an increase of 8.6% versus the same period last year (Q1 2010). This figure compares well to the UK as a whole, which saw an increase of 10.0% against the same period last year.

| FIRST QUARTER (JAN 2011 - MAR 2011) | CANNOCK | UK |
|-------------------------------------|-----------|----------------|
| 2011 | 76 | 90,986 |
| 2010 | 70 | 82,677 |
| % CHANGE | 8.6% | 10.0% |
| RECORD YEAR | 2011 (76) | 2009 (108,060) |

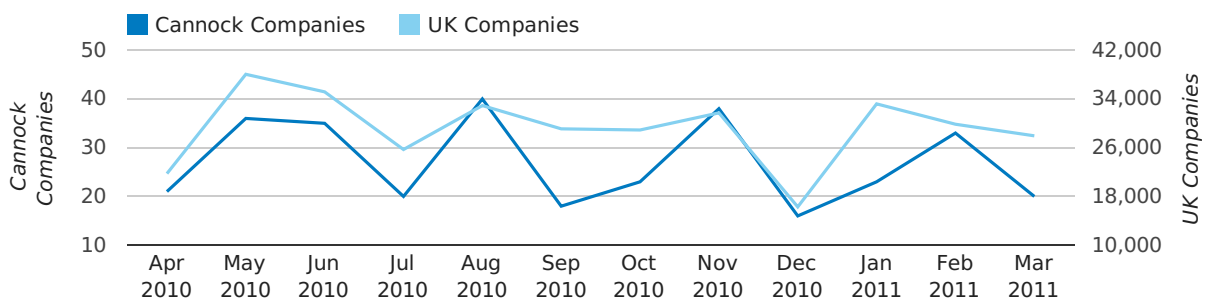
dissolved companies by quarter



Monthly Data (Jan, Feb & Mar 2011)

February 2011 saw a new record in company closures in Cannock when compared to any previous February.

dissolved companies by month



| | JANUARY | FEBRUARY | MARCH |
|--------------------------|-----------|-----------|-----------|
| CLOSED COMPANIES IN 2011 | 23 | 33 | 20 |
| CLOSED COMPANIES IN 2010 | 15 | 18 | 37 |
| % CHANGE | 53.3% | 83.3% | -46% |
| RECORD YEAR | 2007 (25) | 2011 (33) | 2009 (48) |

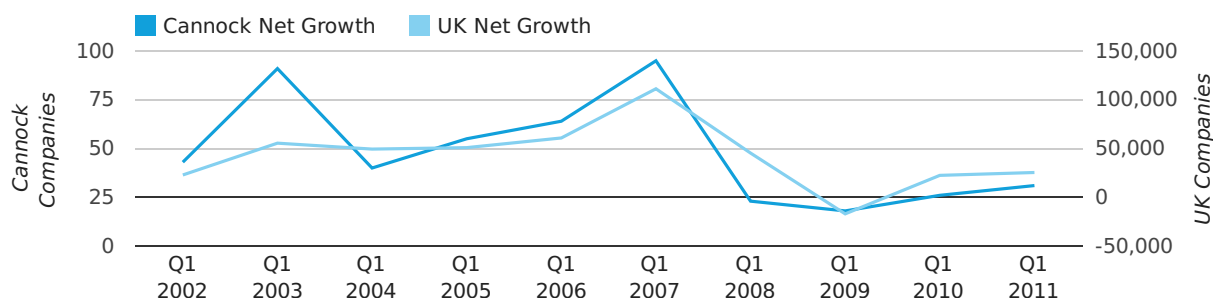
Quarterly Data (Q1 Jan-Mar 2011)

Net company growth for Cannock during the first quarter of 2011 (Jan 2011 - Mar 2011) was 31 companies.

This represents an increase of 19.2% on the same period last year.

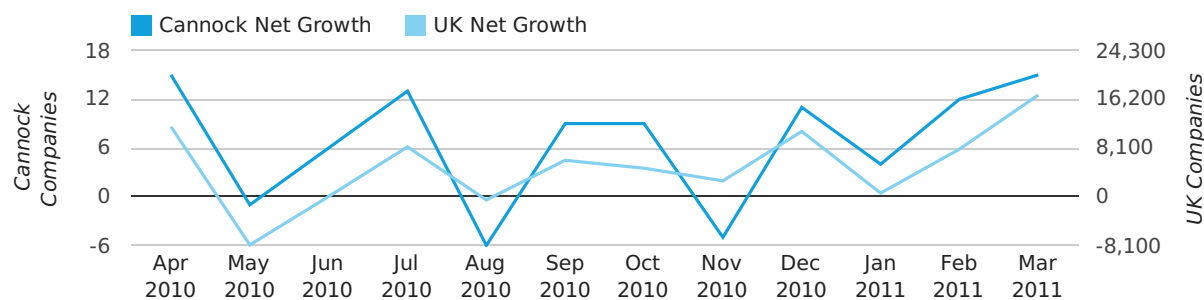
| FIRST QUARTER (JAN 2011 - MAR 2011) | CANNOCK | UK |
|-------------------------------------|-----------|----------------|
| 2011 | 31 | 25,405 |
| 2010 | 26 | 22,460 |
| % CHANGE | 19.2% | 13.1% |
| RECORD YEAR | 2007 (95) | 2007 (111,282) |

net growth by quarter



Monthly Data (Jan, Feb & Mar 2011)

net growth by month



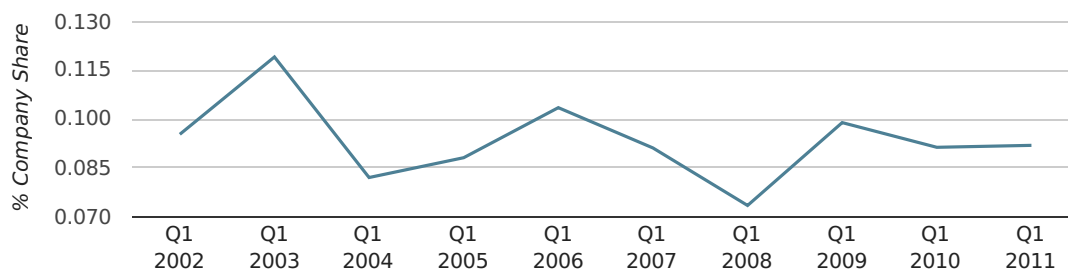
| | JANUARY | FEBRUARY | MARCH |
|--------------------|-----------|-----------|-----------|
| NET GROWTH IN 2011 | 4 | 12 | 15 |
| NET GROWTH IN 2010 | 11 | 16 | -1 |
| % CHANGE | -63.6% | -25.0% | -1,600.0% |
| RECORD YEAR | 2003 (38) | 2006 (25) | 2007 (50) |

Quarterly Data (Q1 Jan-Mar 2011)

In the first quarter of 2011, Cannock formed 0.1% of all UK companies.

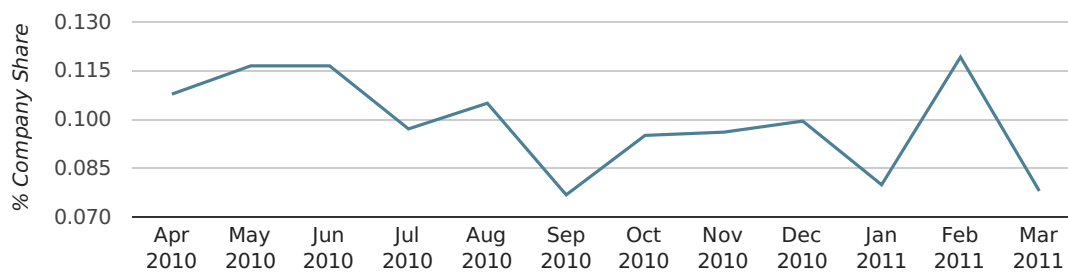
| FIRST QUARTER (JAN 2011 - MAR 2011) | CANNOCK |
|-------------------------------------|-------------|
| 2011 | 0.1% |
| 2010 | 0.1% |
| 2009 | 0.1% |
| 2008 | 0.1% |
| 2007 | 0.1% |
| RECORD YEAR (SINCE 1960) | 1975 (0.1%) |

company share by quarter



Monthly Data (Jan, Feb & Mar 2011)

company share by month



| | JANUARY | FEBRUARY | MARCH |
|----------------------------|-------------|-------------|-------------|
| UK FORMATION SHARE IN 2011 | 0.1% | 0.1% | 0.1% |
| UK FORMATION SHARE IN 2010 | 0.1% | 0.1% | 0.1% |
| % CHANGE | -10.4% | 16.4% | -7.4% |
| RECORD YEAR | 1974 (0.2%) | 1966 (0.4%) | 1968 (0.2%) |

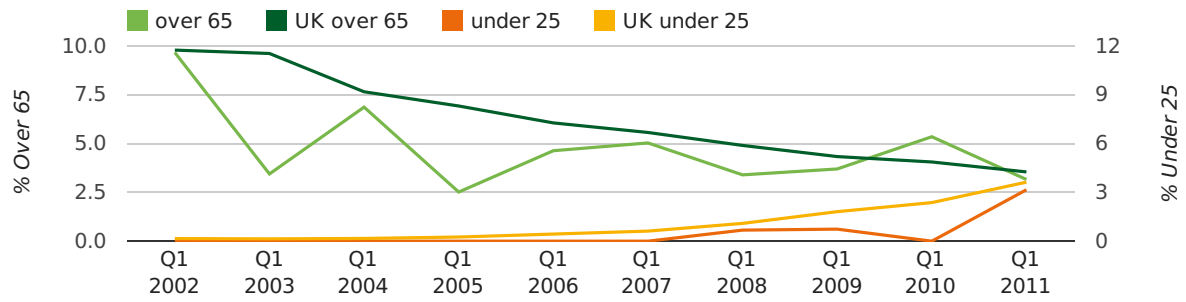
Quarterly Data (Q1 Jan-Mar 2011)

The average age of a director in the first quarter of 2011 was 43.3.

The percentage of directors under the age of 25 was 3.2% compared to the UK figure of 3.0%.

The percentage of directors over the age of 65 was 3.2% compared to the UK figure of 4.3%.

director age by quarter

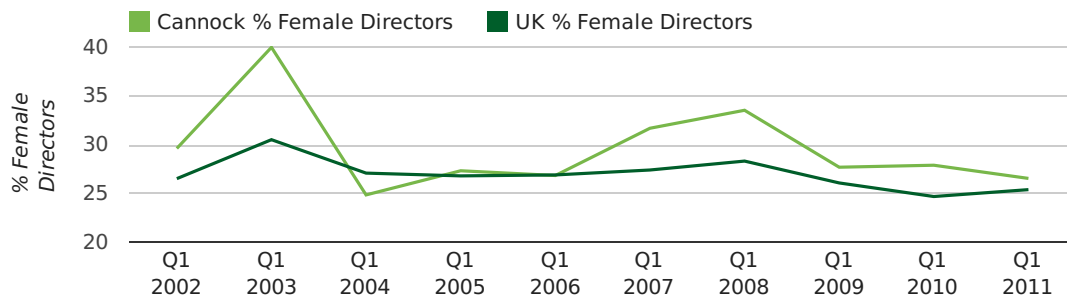


Quarterly Data (Q1 Jan-Mar 2011)

The record first quarter for female directors in Cannock was in 1861 when 40.0% of all directors were female.

26.6% of all director appointments in Cannock in the first quarter of 2011 were female. This compares to a UK average of 25.4% for the same period.

director gender by quarter



Previous 12 months (Mar 2010-Mar 2011)

Excluding: LIMITED, LTD, &, UK, SERVICES, THE, (UK), AND, LTD., A, LLP, SOLUTIONS, COMPANY, OF.

| WORD | PERCENTAGE | UK WORD | UK PERCENTAGE |
|---------------|------------|---------------|---------------|
| MANAGEMENT | 1.77% | CONSULTING | 5.04% |
| ELECTRICAL | 1.36% | MANAGEMENT | 4.97% |
| (MIDLANDS) | 1.22% | CONSULTANCY | 3.16% |
| CONSTRUCTION | 0.95% | PROPERTY | 2.38% |
| STAFFORDSHIRE | 0.82% | TRADING | 2.10% |
| CONSULTING | 0.82% | DESIGN | 1.93% |
| BUILDING | 0.82% | ASSOCIATES | 1.92% |
| TRAINING | 0.82% | BUSINESS | 1.87% |
| J | 0.82% | CONSTRUCTION | 1.80% |
| C | 0.82% | CONSULTANTS | 1.76% |
| G | 0.82% | MEDIA | 1.69% |
| CANNOCK | 0.68% | ENGINEERING | 1.61% |
| CONSULTANCY | 0.68% | LONDON | 1.60% |
| S | 0.68% | CARE | 1.45% |
| R | 0.68% | J | 1.45% |
| PROPERTY | 0.68% | GLOBAL | 1.44% |
| E | 0.68% | INVESTMENTS | 1.43% |
| M | 0.68% | IT | 1.41% |
| DESIGN | 0.68% | PROPERTIES | 1.36% |
| L | 0.54% | BUILDING | 1.34% |
| TRADING | 0.54% | M | 1.30% |
| CO | 0.54% | ELECTRICAL | 1.28% |
| D | 0.54% | S | 1.24% |
| CARPETS | 0.54% | INTERNATIONAL | 1.23% |
| TOTAL | 0.54% | SYSTEMS | 1.23% |

Previous 36 months, excluding companies less than 12 months old

| SIC CODE | NUMBER OF COMPANIES | UK COMPANIES |
|--|---------------------|--------------|
| None Supplied | 167 | 202,798 |
| 7487 - Other business activities | 47 | 60,968 |
| 96090 - Other service activities not elsewhere classified | 23 | 10,085 |
| 9999 - Dormant Company | 21 | 19,765 |
| 82990 - Other business support service activities not elsewhere classified | 18 | 30,253 |
| 9305 - Other service activities | 13 | 8,740 |
| 6024 - Freight transport by road | 13 | 2,299 |
| 62020 - Information technology consultancy activities | 12 | 10,246 |
| 4534 - Other building installation | 12 | 2,285 |
| 99999 - Dormant Company | 11 | 18,336 |
| 74909 - Other professional, scientific and technical activities not elsewhere classified | 9 | 7,788 |
| 43220 - Plumbing, heat and air-conditioning installation | 9 | 2,312 |
| 4521 - General construction & civil engineering | 8 | 6,183 |
| 43999 - Other specialised construction activities not elsewhere classified | 7 | 3,097 |
| 74990 - Non-trading company | 7 | 8,695 |
| 70229 - Management consultancy activities other than financial management | 7 | 16,150 |
| 43210 - Electrical installation | 7 | 3,172 |
| 41202 - Construction of domestic buildings | 6 | 2,290 |
| 43390 - Other building completion and finishing | 6 | 2,707 |
| 7499 - Non-trading company | 6 | 11,316 |