

Cheadle

q3 2011 business confidence report



headlines

- Q3 2011 saw a new record in company registrations in Cheadle when compared to any previous Q3.
- Q3 2011 was a record quarter for company registrations in Cheadle when compared to any quarter in history.
- July 2011 saw a new record in company registrations in Cheadle when compared to any previous July.

contents

new company registrations

closed companies (dissolved)

net company growth

uk company share

director age

director gender

naming trends

sic data

Quarterly Data (Q3 Jul-Sep 2011)

Q3 2011 saw a new record in company registrations in Cheadle when compared to any previous Q3.

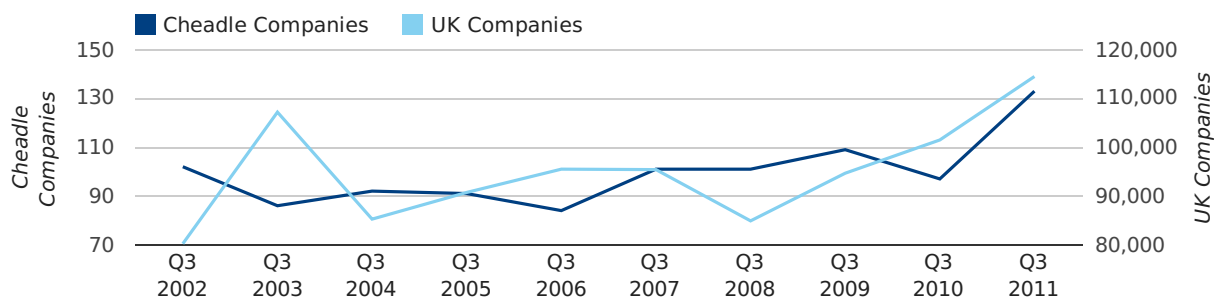
Q3 2011 was a record quarter for company registrations in Cheadle when compared to any quarter in history.

A total of 133 companies were registered in Cheadle during the third quarter of 2011 (Jul 2011 - Sep 2011).

This figure is an increase of 37.1% versus the same period last year (Q3 2010). This figure compares well to the UK as a whole, which saw an increase of 12.8% against the same period last year.

THIRD QUARTER (JUL 2011 - SEP 2011)	CHEADLE	UK
2011	133	114,512
2010	97	101,492
% CHANGE	37.1%	12.8%
RECORD YEAR	2011 (133)	2011 (114,512)

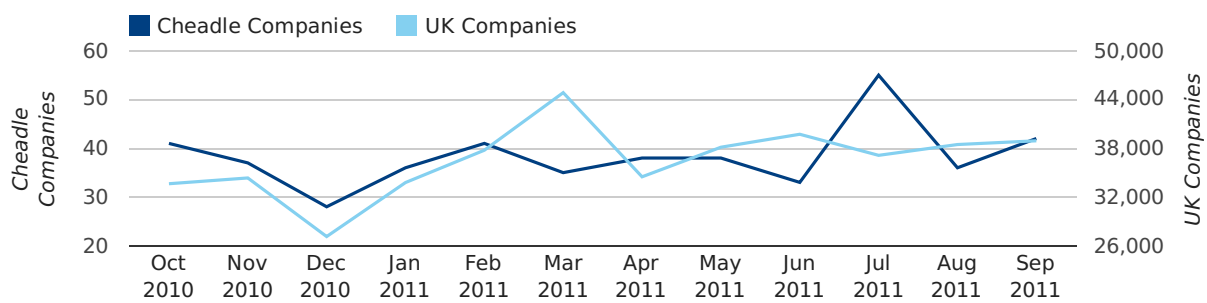
new companies by quarter



Monthly Data (Jul, Aug & Sep 2011)

July 2011 saw a new record in company registrations in Cheadle when compared to any previous July.

new companies by month



	JULY	AUGUST	SEPTEMBER
NEW COMPANIES IN 2011	55	36	42
NEW COMPANIES IN 2010	26	32	39
% CHANGE	111.5%	12.5%	7.7%
RECORD YEAR	2011 (55)	2007 (38)	2009 (44)

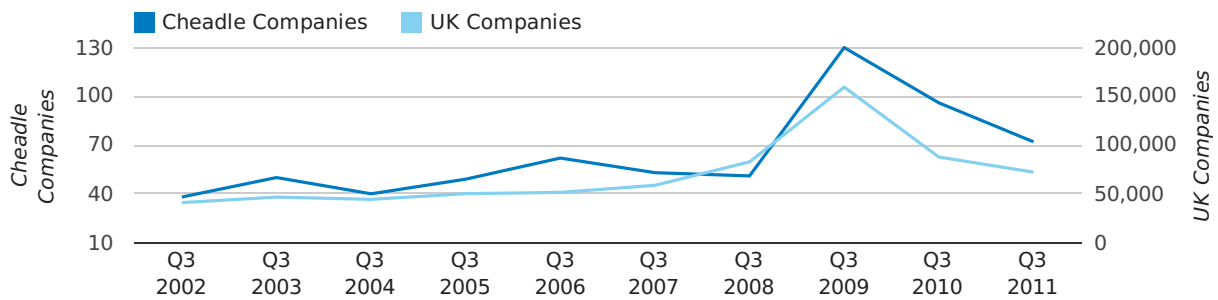
Quarterly Data (Q3 Jul-Sep 2011)

A total of 72 companies were dissolved in Cheadle during the third quarter of 2011 (Jul 2011 - Sep 2011).

This figure is a decrease of 25.0% versus the same period last year (Q3 2010). This figure compares well to the UK as a whole, which saw a decrease of 17.6% against the same period last year.

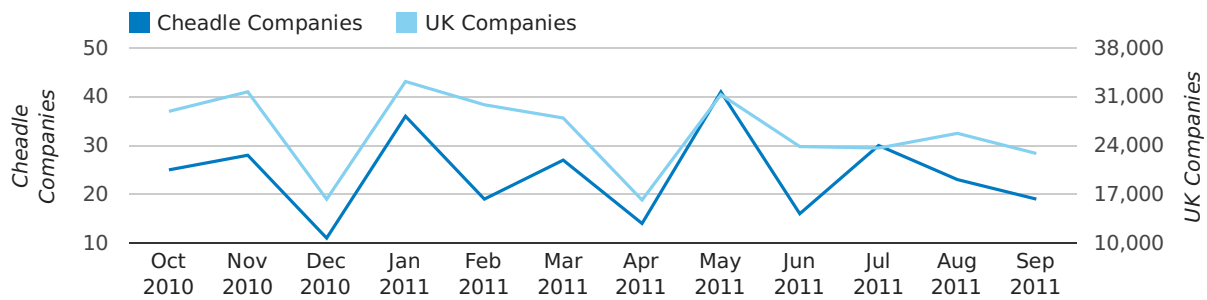
THIRD QUARTER (JUL 2011 - SEP 2011)	CHEADLE	UK
2011	72	72,230
2010	96	87,705
% CHANGE	-25.0%	-17.6%
RECORD YEAR	2009 (130)	2009 (159,401)

dissolved companies by quarter



Monthly Data (Jul, Aug & Sep 2011)

dissolved companies by month



	JULY	AUGUST	SEPTEMBER
CLOSED COMPANIES IN 2011	30	23	19
CLOSED COMPANIES IN 2010	37	33	26
% CHANGE	-18.9%	-30.3%	-27%
RECORD YEAR	2009 (40)	2008 (34)	2009 (63)

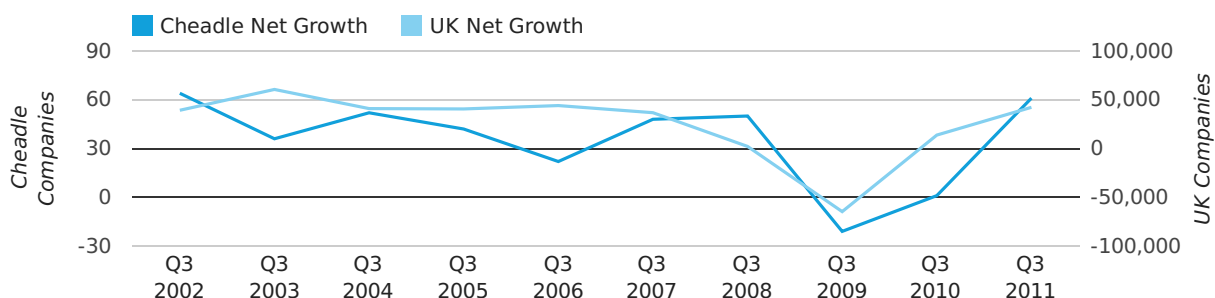
Quarterly Data (Q3 Jul-Sep 2011)

Net company growth for Cheadle during the third quarter of 2011 (Jul 2011 - Sep 2011) was 61 companies.

This represents an increase of 6,000.0% on the same period last year.

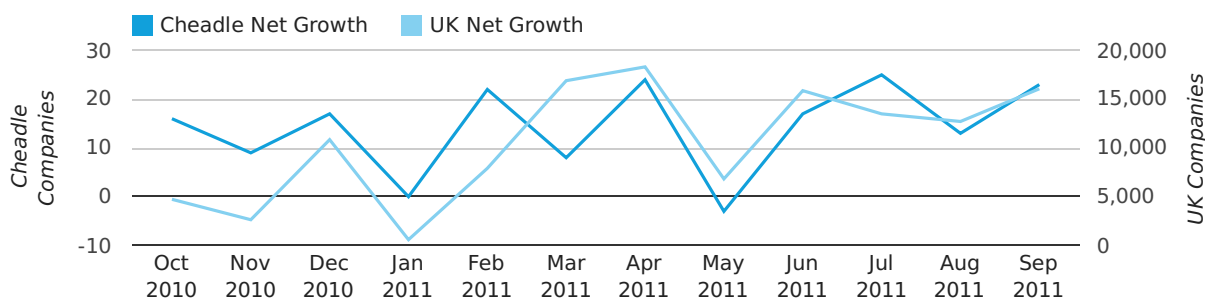
THIRD QUARTER (JUL 2011 - SEP 2011)	CHEADLE	UK
2011	61	42,282
2010	1	13,787
% CHANGE	6,000.0%	206.7%
RECORD YEAR	2002 (64)	2003 (60,597)

net growth by quarter



Monthly Data (Jul, Aug & Sep 2011)

net growth by month



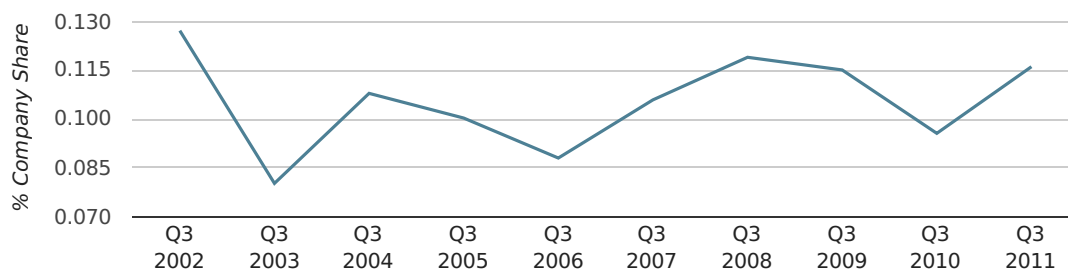
	JULY	AUGUST	SEPTEMBER
NET GROWTH IN 2011	25	13	23
NET GROWTH IN 2010	-11	-1	13
% CHANGE	-327.3%	-1,400.0%	76.9%
RECORD YEAR	2008 (35)	2007 (24)	2002 (31)

Quarterly Data (Q3 Jul-Sep 2011)

In the third quarter of 2011, Cheadle formed 0.1% of all UK companies.

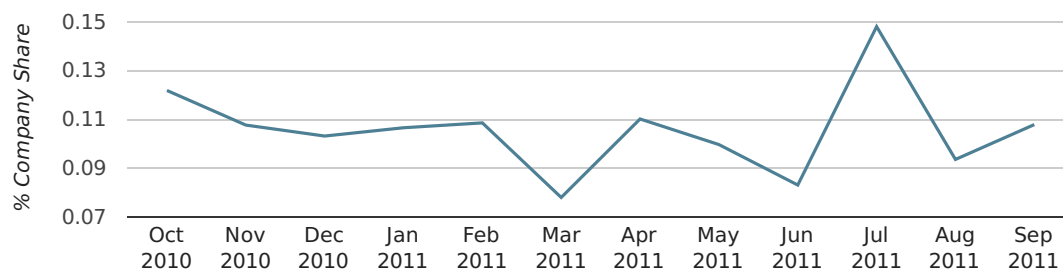
THIRD QUARTER (JUL 2011 - SEP 2011)	CHEADLE
2011	0.1%
2010	0.1%
2009	0.1%
2008	0.1%
2007	0.1%
RECORD YEAR (SINCE 1960)	1986 (0.2%)

company share by quarter



Monthly Data (Jul, Aug & Sep 2011)

company share by month



	JULY	AUGUST	SEPTEMBER
UK FORMATION SHARE IN 2011	0.1%	0.1%	0.1%
UK FORMATION SHARE IN 2010	0.1%	0.1%	0.1%
% CHANGE	93.6%	-5.4%	-2.8%
RECORD YEAR	1962 (0.3%)	1965 (0.5%)	1962 (0.2%)

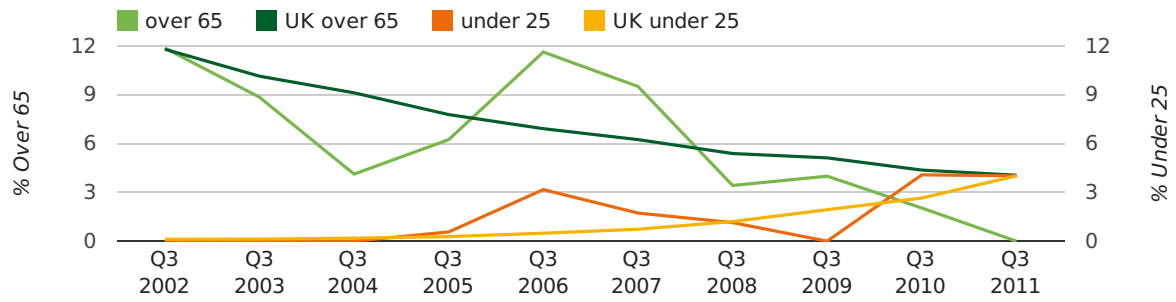
Quarterly Data (Q3 Jul-Sep 2011)

The average age of a director in the third quarter of 2011 was 41.3.

The percentage of directors under the age of 25 was 4.0% compared to the UK figure of 4.0%.

The percentage of directors over the age of 65 was 0.0% compared to the UK figure of 4.1%.

director age by quarter

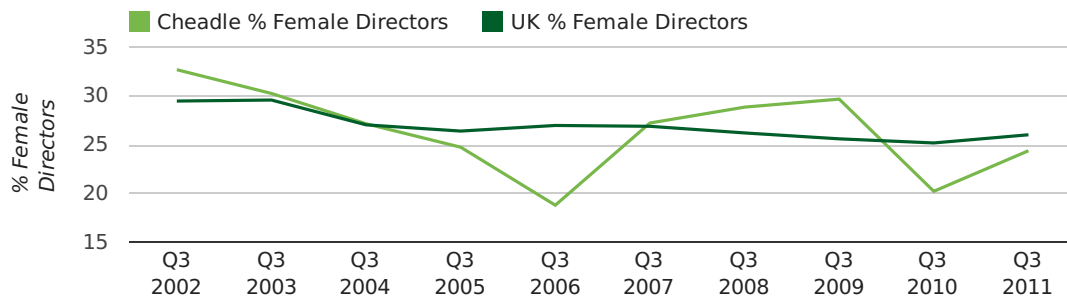


Quarterly Data (Q3 Jul-Sep 2011)

The record third quarter for female directors in Cheadle was in 1862 when 50.0% of all directors were female.

24.4% of all director appointments in Cheadle in the third quarter of 2011 were female. This compares to a UK average of 26.0% for the same period.

director gender by quarter



Previous 12 months (Sep 2010-Sep 2011)

Excluding: LIMITED, LTD, &, UK, SERVICES, THE, (UK), AND, LTD., A, LLP, SOLUTIONS, COMPANY, OF.

WORD	PERCENTAGE	UK WORD	UK PERCENTAGE
CONSULTANCY	1.97%	CONSULTING	5.11%
CONSULTING	1.73%	MANAGEMENT	4.75%
ENGINEERING	0.99%	CONSULTANCY	3.19%
MANAGEMENT	0.74%	PROPERTY	2.41%
MARKETING	0.62%	TRADING	2.06%
CO	0.62%	DESIGN	1.94%
CHESHIRE	0.62%	ASSOCIATES	1.85%
GREEN	0.62%	BUSINESS	1.82%
MEDICAL	0.62%	CONSULTANTS	1.76%
SECURITY	0.62%	ENGINEERING	1.74%
HEALTHCARE	0.49%	MEDIA	1.72%
DESIGN	0.49%	CONSTRUCTION	1.72%
CONSULTANTS	0.49%	LONDON	1.63%
LEGAL	0.49%	J	1.47%
MEDIA	0.49%	GLOBAL	1.46%
PROPERTY	0.49%	INVESTMENTS	1.43%
DIDSBURY	0.49%	CARE	1.42%
4	0.49%	IT	1.38%
ACORN	0.49%	BUILDING	1.30%
DEVELOPMENTS	0.49%	PROPERTIES	1.28%
DESIGNS	0.49%	ELECTRICAL	1.27%
CHEADLE	0.49%	M	1.25%
EDUCATION	0.37%	ENERGY	1.22%
NORTH	0.37%	TRAINING	1.21%
CREATIVE	0.37%	S	1.21%

Previous 36 months, excluding companies less than 12 months old

SIC CODE	NUMBER OF COMPANIES	UK COMPANIES
None Supplied	178	204,493
7487 - Other business activities	81	65,177
82990 - Other business support service activities not elsewhere classified	38	29,245
9999 - Dormant Company	25	22,587
7414 - Business & management consultancy	23	14,755
99999 - Dormant Company	19	18,281
70229 - Management consultancy activities other than financial management	14	15,760
7222 - Other software consultancy and supply	13	8,345
9305 - Other service activities	12	10,525
96090 - Other service activities not elsewhere classified	11	10,018
7260 - Other computer related activities	11	8,686
62090 - Other information technology service activities	11	6,798
74909 - Other professional, scientific and technical activities not elsewhere classified	10	7,551
68100 - Buying and selling of own real estate	10	2,426
5552 - Catering	7	2,363
68209 - Other letting and operating of own or leased real estate	7	3,614
86210 - General medical practice activities	7	1,986
86900 - Other human health activities	7	4,019
64999 - Financial intermediation not elsewhere classified	6	2,625
62012 - Business and domestic software development	6	3,137