

Cheltenham

2011 half year business confidence report



headlines

- Q2 2011 saw a new record in company registrations in Cheltenham when compared to any previous Q2.
- June 2011 saw a new record in company registrations in Cheltenham when compared to any previous June.
- April 2011 saw a new record in company registrations in Cheltenham when compared to any previous April.

contents

new company registrations

closed companies (dissolved)

net company growth

uk company share

director age

director gender

naming trends

sic data

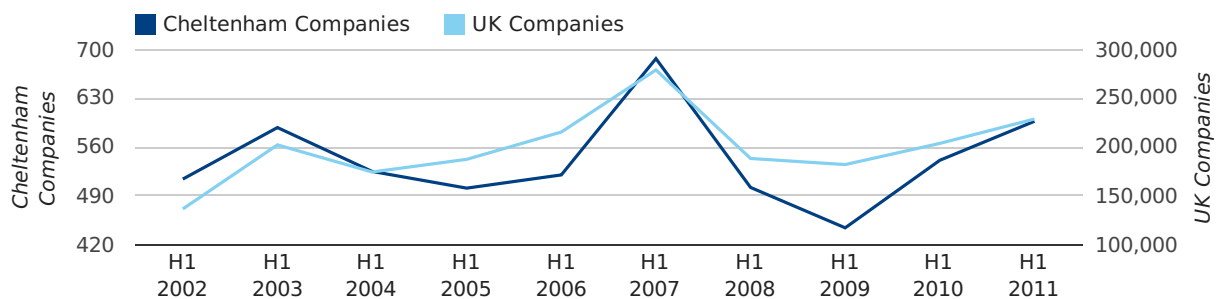
Half Year Data (Jan-Jun 2011)

In the first half of 2011 a total of 597 companies were formed in Cheltenham. This figure is 10.4% higher than last year, which compares badly to the UK wide figure of 12.3%.

The highest total for a first half year in Cheltenham occurred in 2007 when a total of 687 were formed.

HALF YEAR (JAN-JUN)	CHELTENHAM	UK
2011	597	228,735
2010	541	203,749
% CHANGE	10.4%	12.3%
RECORD YEAR	2007 (687)	2007 (279,097)

new companies by half year



Quarterly Data (Q2 Apr-Jun 2011)

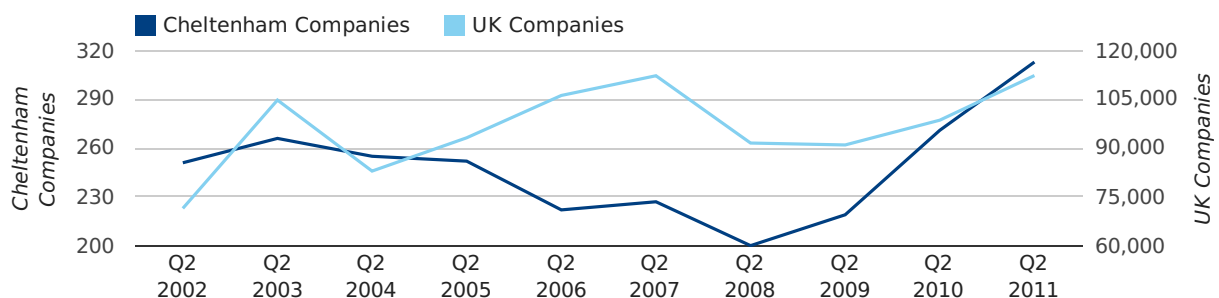
Q2 2011 saw a new record in company registrations in Cheltenham when compared to any previous Q2.

A total of 313 companies were registered in Cheltenham during the second quarter of 2011 (Apr 2011 - Jun 2011).

This figure is an increase of 15.5% versus the same period last year (Q2 2010). This figure compares well to the UK as a whole, which saw an increase of 13.9% against the same period last year.

SECOND QUARTER (APR 2011 - JUN 2011)	CHELTENHAM	UK
2011	313	112,344
2010	271	98,612
% CHANGE	15.5%	13.9%
RECORD YEAR	2011 (313)	2011 (112,344)

new companies by quarter

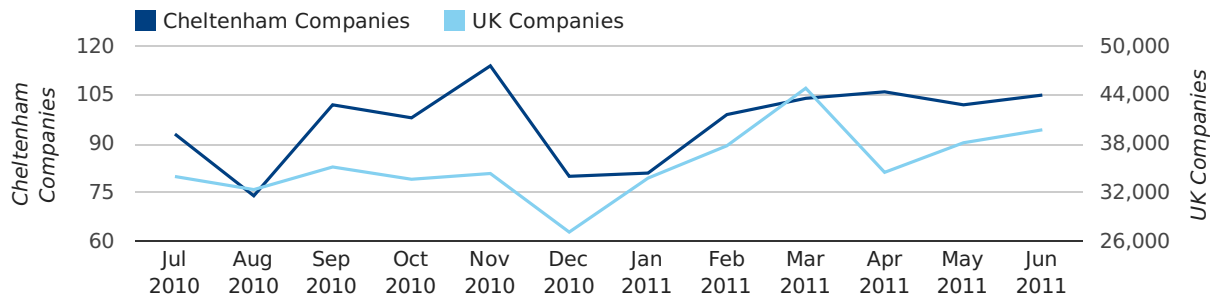


Monthly Data (Apr, May & Jun 2011)

June 2011 saw a new record in company registrations in Cheltenham when compared to any previous June.

April 2011 saw a new record in company registrations in Cheltenham when compared to any previous April.

new companies by month



	APRIL	MAY	JUNE
NEW COMPANIES IN 2011	106	102	105
NEW COMPANIES IN 2010	92	85	94
% CHANGE	15.2%	20.0%	11.7%
RECORD YEAR	2011 (106)	2003 (104)	2011 (105)

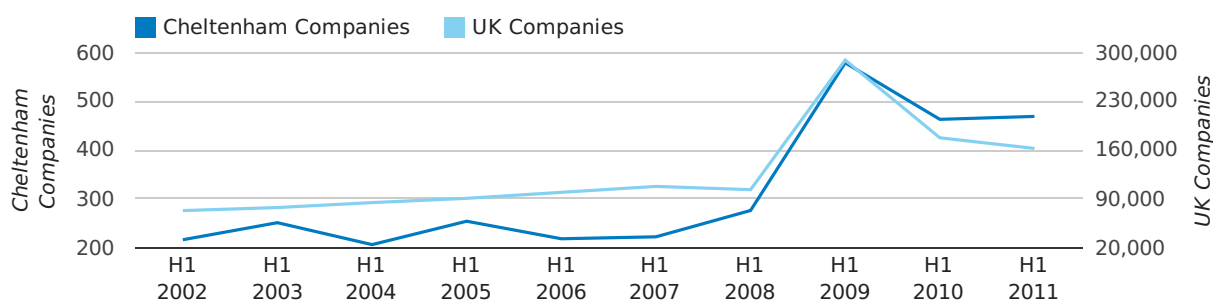
Half Year Data (Jan-Jun 2011)

In the first half of 2011 a total of 469 companies were dissolved in Cheltenham. This figure is 1.3% higher than last year, which compares badly to the UK wide change of -8.6%.

The highest total for a first half year in Cheltenham occurred in 2009 when a total of 579 were closed.

HALF YEAR (JAN-JUN)	CHELTENHAM	UK
2011	469	162,310
2010	463	177,631
% CHANGE	1.3%	-8.6%
RECORD YEAR	2009 (579)	2009 (289,236)

dissolved companies by half year



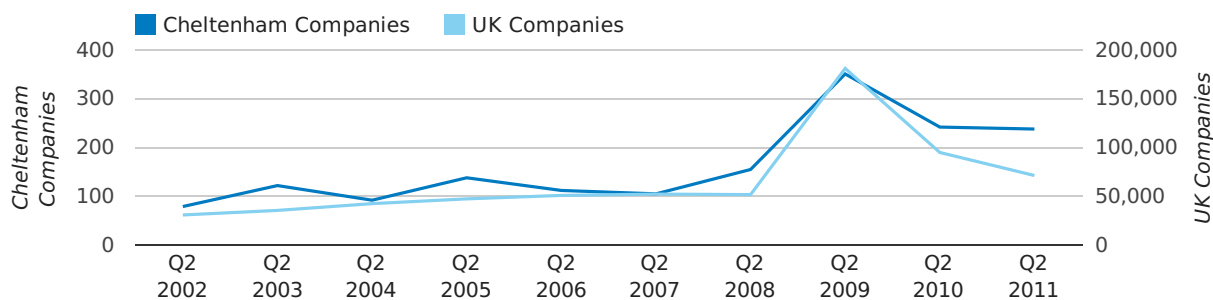
Quarterly Data (Q2 Apr-Jun 2011)

A total of 238 companies were dissolved in Cheltenham during the second quarter of 2011 (Apr 2011 - Jun 2011).

This figure is a decrease of 1.7% versus the same period last year (Q2 2010). This figure compares poorly to the UK as a whole, which saw a decrease of 24.9% against the same period last year.

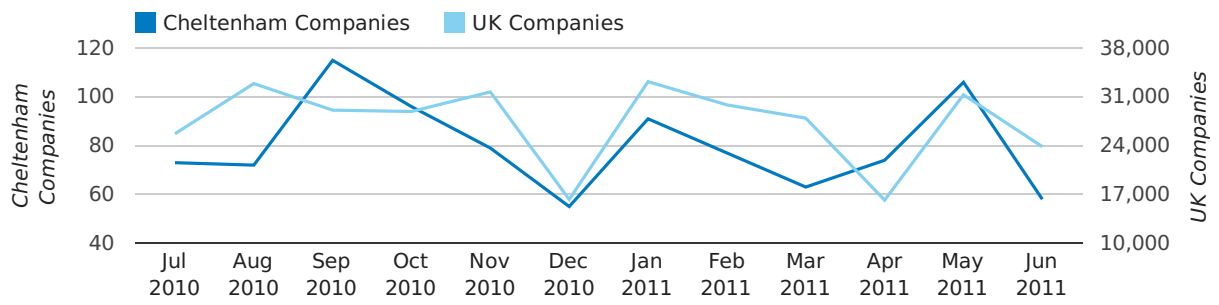
SECOND QUARTER (APR 2011 - JUN 2011)	CHELTENHAM	UK
2011	238	71,324
2010	242	94,954
% CHANGE	-1.7%	-24.9%
RECORD YEAR	2009 (351)	2009 (181,176)

dissolved companies by quarter



Monthly Data (Apr, May & Jun 2011)

dissolved companies by month



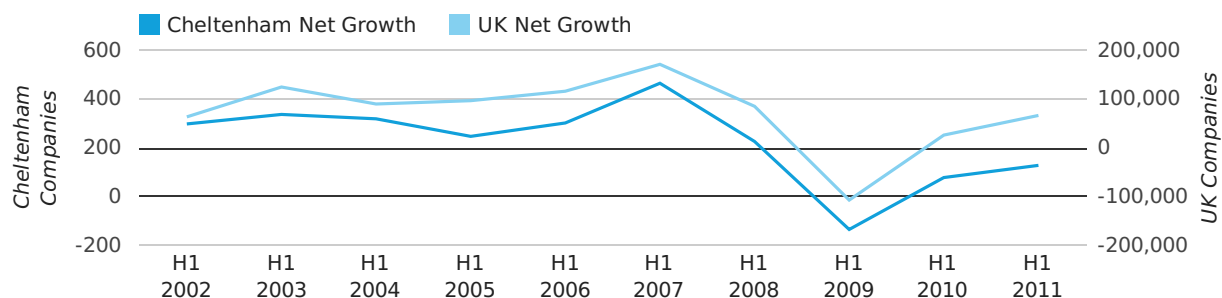
	APRIL	MAY	JUNE
CLOSED COMPANIES IN 2011	74	106	58
CLOSED COMPANIES IN 2010	57	80	105
% CHANGE	29.8%	32.5%	-45%
RECORD YEAR	2008 (78)	2009 (158)	2009 (115)

Half Year Data (Jan-Jun 2011)

In the first half of 2011 the company register for Cheltenham increased by 128 companies. This figure is 64.1% higher than last year, which compares badly to a UK increase of 154.3%.

HALF YEAR (JAN-JUN)	CHELTENHAM	UK
2011	128	66,425
2010	78	26,118
% CHANGE	64.1%	154.3%
RECORD YEAR	2007 (465)	2007 (171,296)

net growth by half year



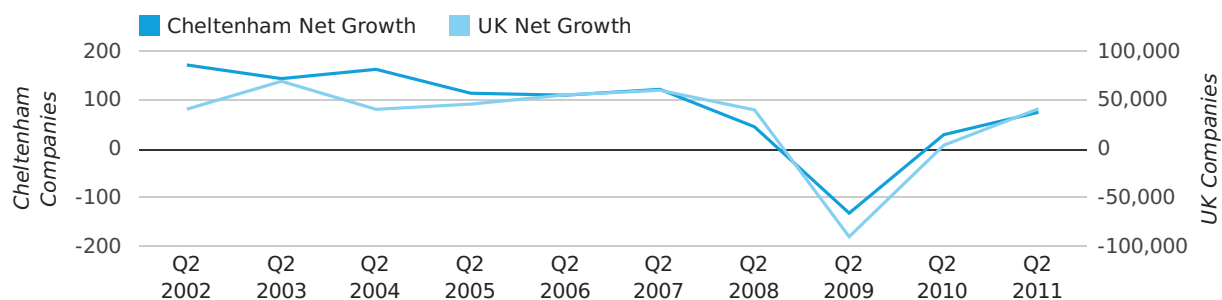
Quarterly Data (Q2 Apr-Jun 2011)

Net company growth for Cheltenham during the second quarter of 2011 (Apr 2011 - Jun 2011) was 75 companies.

This represents an increase of 158.6% on the same period last year.

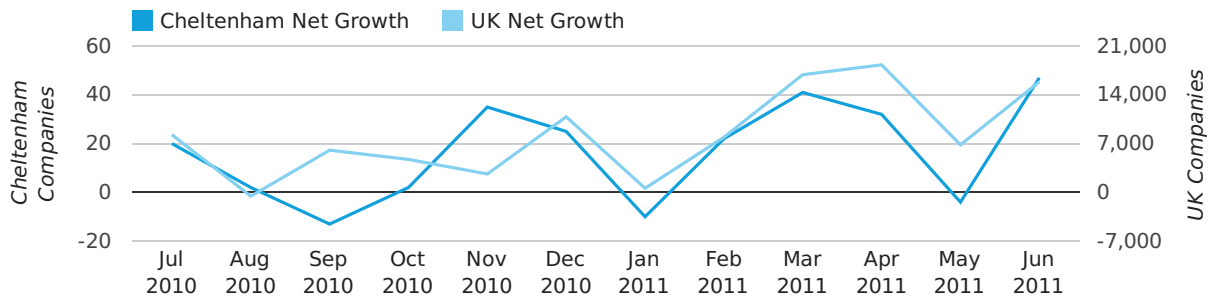
SECOND QUARTER (APR 2011 - JUN 2011)	CHELTENHAM	UK
2011	75	41,020
2010	29	3,658
% CHANGE	158.6%	1,021.4%
RECORD YEAR	2002 (172)	2003 (69,274)

net growth by quarter



Monthly Data (Apr, May & Jun 2011)

net growth by month



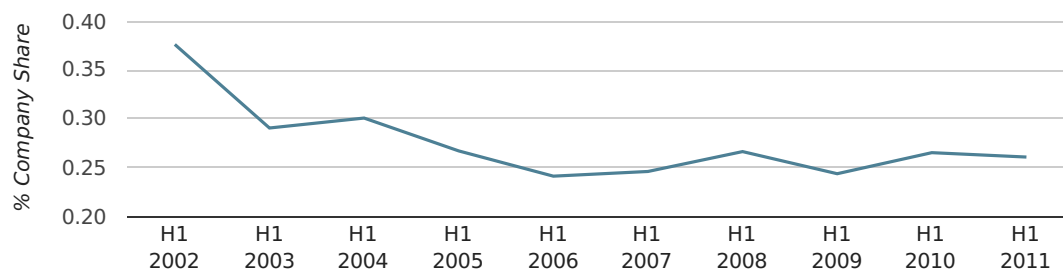
	APRIL	MAY	JUNE
NET GROWTH IN 2011	32	-4	47
NET GROWTH IN 2010	35	5	-11
% CHANGE	-8.6%	-180.0%	-527.3%
RECORD YEAR	2007 (68)	2004 (85)	2002 (70)

Half Year Data (Jan-Jun 2011)

In the first half of 2011 Cheltenham formed 0.3% of all UK companies. This is the same as the 2010 figure of 0.3%.

HALF YEAR (JAN-JUN)	CHELTENHAM
2011	0.3%
2010	0.3%
2009	0.2%
2008	0.3%
2007	0.2%
RECORD YEAR (SINCE 1960)	1967 (0.5%)

company share by half year

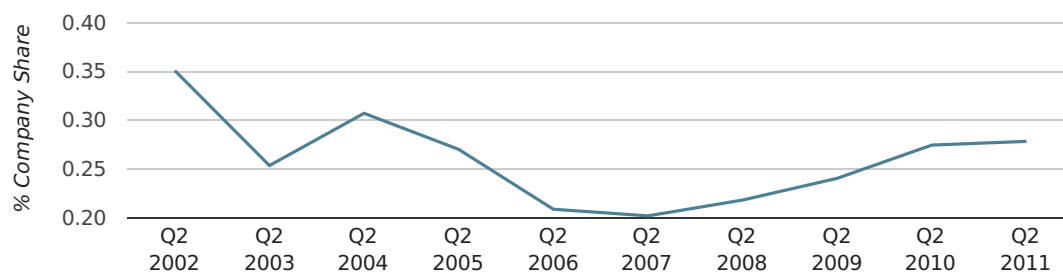


Quarterly Data (Q2 Apr-Jun 2011)

In the second quarter of 2011, Cheltenham formed 0.3% of all UK companies.

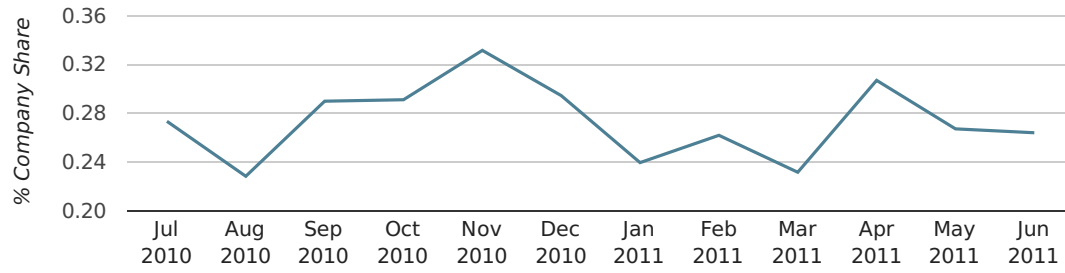
SECOND QUARTER (APR 2011 - JUN 2011)	CHELTENHAM
2011	0.3%
2010	0.3%
2009	0.2%
2008	0.2%
2007	0.2%
RECORD YEAR (SINCE 1960)	1968 (0.4%)

company share by quarter



Monthly Data (Apr, May & Jun 2011)

company share by month



	APRIL	MAY	JUNE
UK FORMATION SHARE IN 2011	0.3%	0.3%	0.3%
UK FORMATION SHARE IN 2010	0.3%	0.3%	0.3%
% CHANGE	11.5%	-5.5%	-1.0%
RECORD YEAR	1967 (0.9%)	1969 (1.0%)	1977 (0.7%)

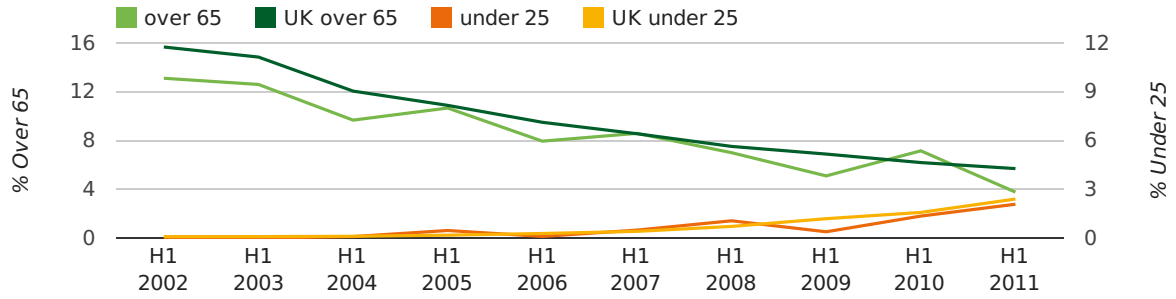
Half Year Data (Jan-Jun 2011)

The average age of a director in the first half of 2011 was 45.8.

The percentage of directors under the age of 25 was 2.1% compared to the UK figure of 3.2%.

The percentage of directors over the age of 65 was 3.8% compared to the UK figure of 4.3%.

director age by half year



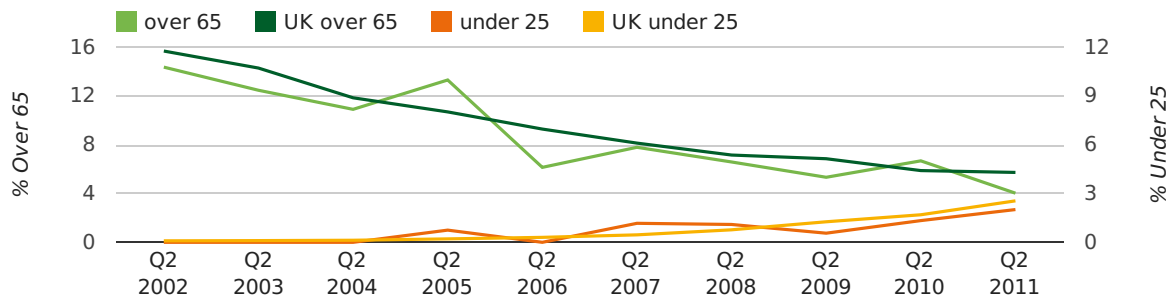
Quarterly Data (Q2 Apr-Jun 2011)

The average age of a director in the second quarter of 2011 was 45.9.

The percentage of directors under the age of 25 was 2.0% compared to the UK figure of 3.4%.

The percentage of directors over the age of 65 was 4.0% compared to the UK figure of 4.3%.

director age by quarter

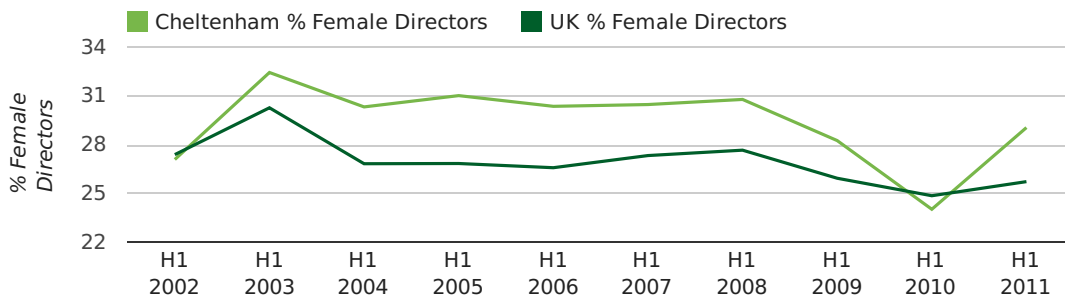


Half Year Data (Jan-Jun 2011)

The record first half year for female directors in Cheltenham was 1861 when 40.0% of all directors were female.

29.1% of all director appointments in Cheltenham in the first half of 2011 were female. This compares to a UK average of 25.7% for the same period.

director gender by half year

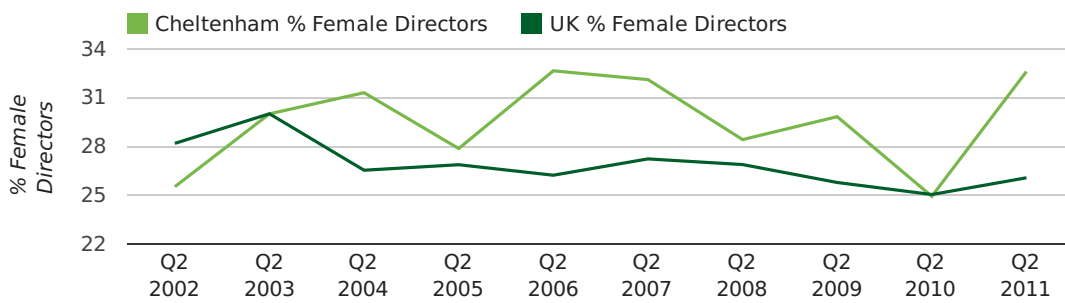


Quarterly Data (Q2 Apr-Jun 2011)

The record second quarter for female directors in Cheltenham was in 1866 when 66.7% of all directors were female.

32.6% of all director appointments in Cheltenham in the second quarter of 2011 were female. This compares to a UK average of 26.1% for the same period.

director gender by quarter



Previous 12 months (Jun 2010-Jun 2011)

Excluding: LIMITED, LTD, &, UK, SERVICES, THE, (UK), AND, LTD., A, LLP, SOLUTIONS, COMPANY, OF.

WORD	PERCENTAGE	UK WORD	UK PERCENTAGE
CONSULTING	2.15%	CONSULTING	5.09%
MANAGEMENT	1.81%	MANAGEMENT	4.86%
CHELTENHAM	1.53%	CONSULTANCY	3.17%
CONSULTANCY	1.30%	PROPERTY	2.43%
CARE	1.30%	TRADING	2.05%
COTSWOLD	1.08%	DESIGN	1.94%
BUSINESS	0.96%	ASSOCIATES	1.92%
DENTAL	0.91%	BUSINESS	1.87%
(CHELTENHAM)	0.85%	CONSTRUCTION	1.77%
DESIGN	0.79%	CONSULTANTS	1.76%
IT	0.79%	MEDIA	1.73%
CONSTRUCTION	0.74%	ENGINEERING	1.67%
PROPERTY	0.62%	LONDON	1.60%
TRAINING	0.57%	GLOBAL	1.46%
J	0.57%	J	1.44%
HOUSE	0.57%	CARE	1.44%
BUILDING	0.51%	INVESTMENTS	1.42%
CONSULTANTS	0.51%	IT	1.39%
SCHOOL	0.51%	BUILDING	1.32%
D	0.45%	PROPERTIES	1.31%
HOLDINGS	0.45%	ELECTRICAL	1.30%
SYSTEMS	0.45%	M	1.27%
DEVELOPMENT	0.45%	S	1.23%
C	0.45%	ENTERPRISES	1.20%
LONDON	0.40%	SYSTEMS	1.20%

Previous 36 months, excluding companies less than 12 months old

SIC CODE	NUMBER OF COMPANIES	UK COMPANIES
None Supplied	388	202,072
7487 - Other business activities	114	60,758
70229 - Management consultancy activities other than financial management	75	16,419
82990 - Other business support service activities not elsewhere classified	56	30,647
7414 - Business & management consultancy	49	13,053
62020 - Information technology consultancy activities	48	10,545
9999 - Dormant Company	41	20,111
99999 - Dormant Company	36	18,918
74990 - Non-trading company	30	8,481
9305 - Other service activities	28	9,063
74909 - Other professional, scientific and technical activities not elsewhere classified	28	7,835
7222 - Other software consultancy and supply	27	7,143
62090 - Other information technology service activities	21	7,095
7499 - Non-trading company	18	10,955
7260 - Other computer related activities	16	7,849
68320 - Management of real estate on a fee or contract basis	16	3,095
4521 - General construction & civil engineering	15	5,928
41100 - Development of building projects	15	3,852
68209 - Other letting and operating of own or leased real estate	15	3,790
62012 - Business and domestic software development	14	3,262