

Chesterfield

q1 2011 business confidence report



headlines

- February 2011 saw a new record in company closures in Chesterfield when compared to any previous February.
- January 2011 saw a new record in company closures in Chesterfield when compared to any previous January.

contents

new company registrations

closed companies (dissolved)

net company growth

uk company share

director age

director gender

naming trends

sic data

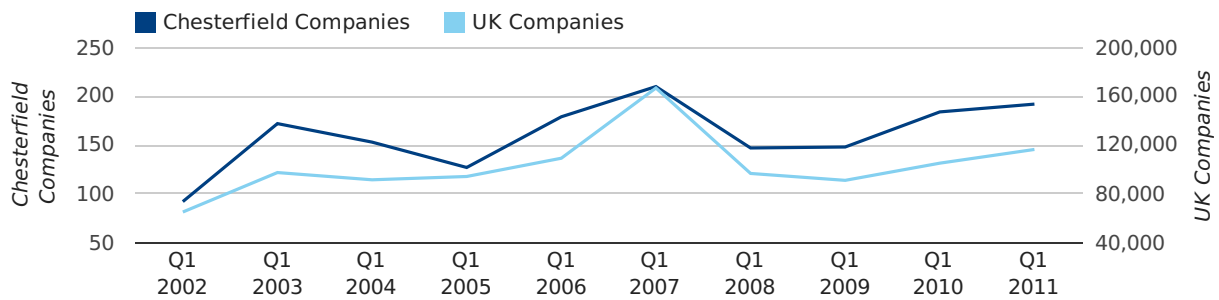
Quarterly Data (Q1 Jan-Mar 2011)

A total of 192 companies were registered in Chesterfield during the first quarter of 2011 (Jan 2011 - Mar 2011).

This figure is an increase of 4.3% versus the same period last year (Q1 2010). This figure compares badly to the UK as a whole, which saw an increase of 10.7% against the same period last year.

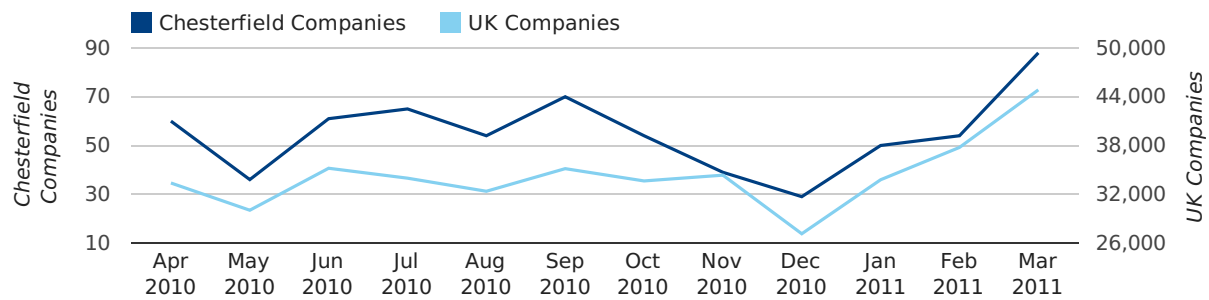
FIRST QUARTER (JAN 2011 - MAR 2011)	CHESTERFIELD	UK
2011	192	116,391
2010	184	105,137
% CHANGE	4.3%	10.7%
RECORD YEAR	2000 (465)	2007 (166,814)

new companies by quarter



Monthly Data (Jan, Feb & Mar 2011)

new companies by month



	JANUARY	FEBRUARY	MARCH
NEW COMPANIES IN 2011	50	54	88
NEW COMPANIES IN 2010	44	70	70
% CHANGE	13.6%	-22.9%	25.7%
RECORD YEAR	2007 (64)	2010 (70)	2000 (411)

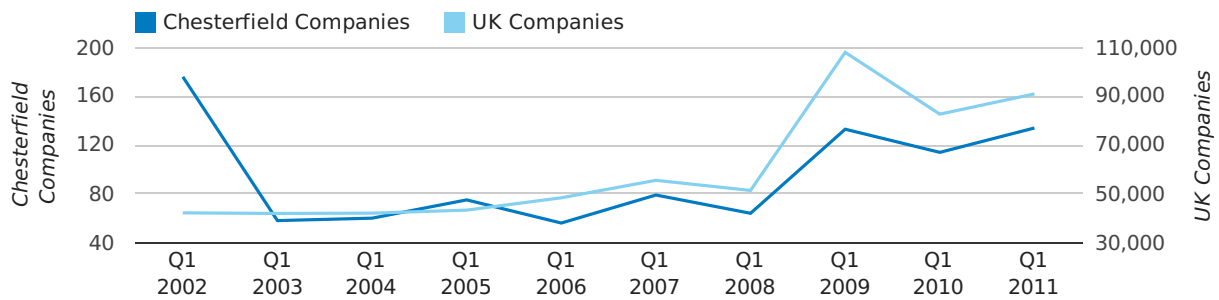
Quarterly Data (Q1 Jan-Mar 2011)

A total of 134 companies were dissolved in Chesterfield during the first quarter of 2011 (Jan 2011 - Mar 2011).

This figure is an increase of 17.5% versus the same period last year (Q1 2010). This figure compares poorly to the UK as a whole, which saw an increase of 10.0% against the same period last year.

FIRST QUARTER (JAN 2011 - MAR 2011)	CHESTERFIELD	UK
2011	134	90,986
2010	114	82,677
% CHANGE	17.5%	10.0%
RECORD YEAR	2002 (176)	2009 (108,060)

dissolved companies by quarter

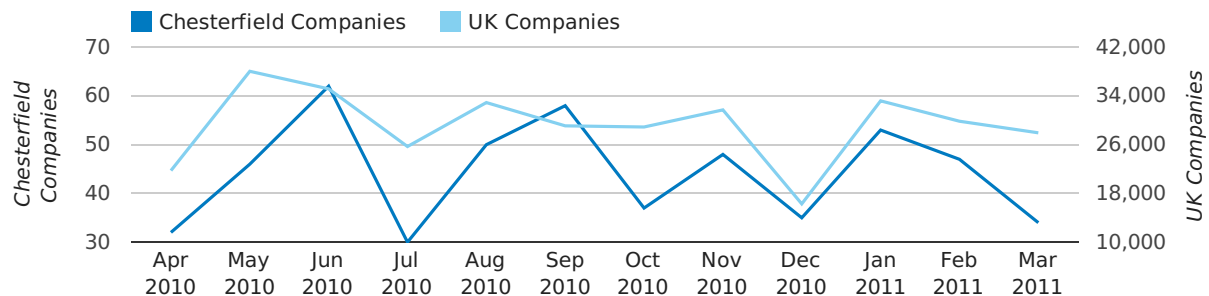


Monthly Data (Jan, Feb & Mar 2011)

February 2011 saw a new record in company closures in Chesterfield when compared to any previous February.

January 2011 saw a new record in company closures in Chesterfield when compared to any previous January.

dissolved companies by month



	JANUARY	FEBRUARY	MARCH
CLOSED COMPANIES IN 2011	53	47	34
CLOSED COMPANIES IN 2010	29	30	55
% CHANGE	82.8%	56.7%	-38%
RECORD YEAR	2011 (53)	2011 (47)	2002 (142)

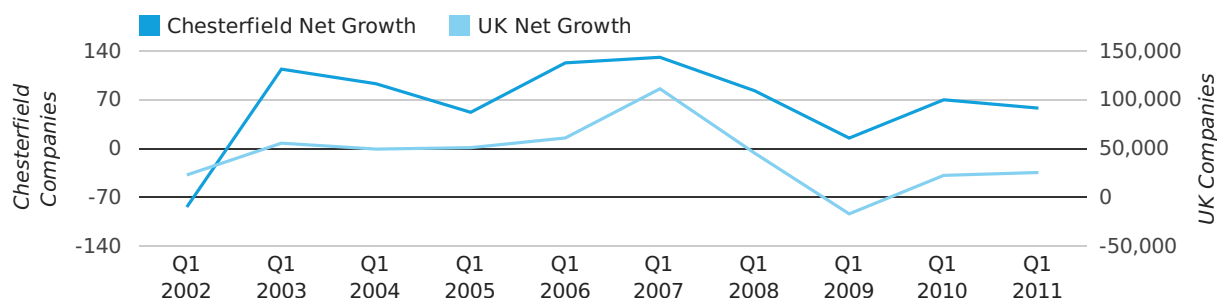
Quarterly Data (Q1 Jan-Mar 2011)

Net company growth for Chesterfield during the first quarter of 2011 (Jan 2011 - Mar 2011) was 58 companies.

This represents a decrease of 17.1% on the same period last year.

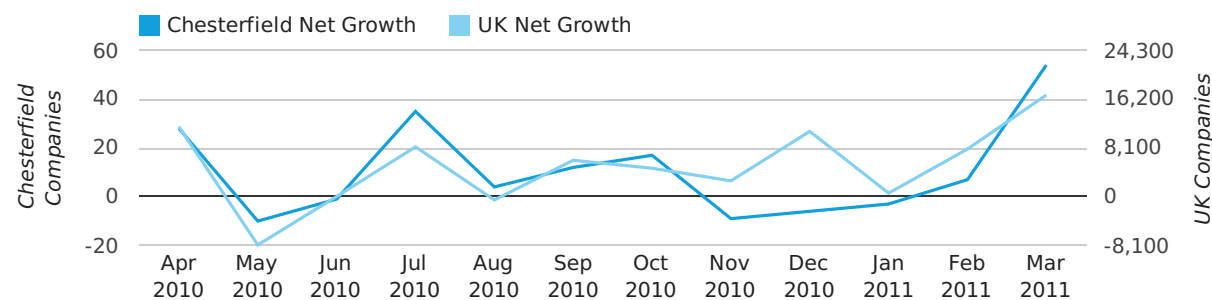
FIRST QUARTER (JAN 2011 - MAR 2011)	CHESTERFIELD	UK
2011	58	25,405
2010	70	22,460
% CHANGE	-17.1%	13.1%
RECORD YEAR	2000 (422)	2007 (111,282)

net growth by quarter



Monthly Data (Jan, Feb & Mar 2011)

net growth by month



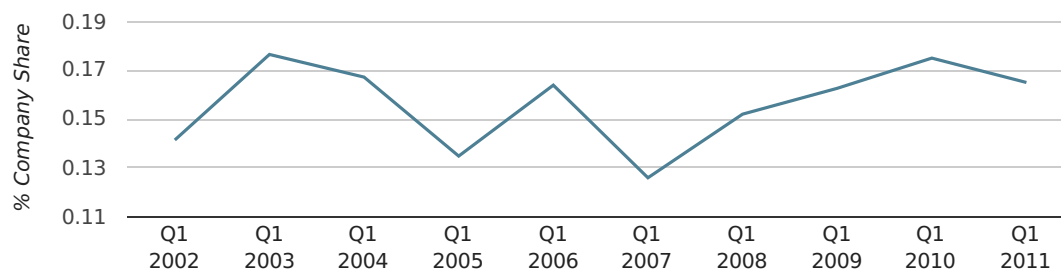
	JANUARY	FEBRUARY	MARCH
NET GROWTH IN 2011	-3	7	54
NET GROWTH IN 2010	15	40	15
% CHANGE	-120.0%	-82.5%	260.0%
RECORD YEAR	2003 (40)	2010 (40)	2000 (398)

Quarterly Data (Q1 Jan-Mar 2011)

In the first quarter of 2011, Chesterfield formed 0.2% of all UK companies.

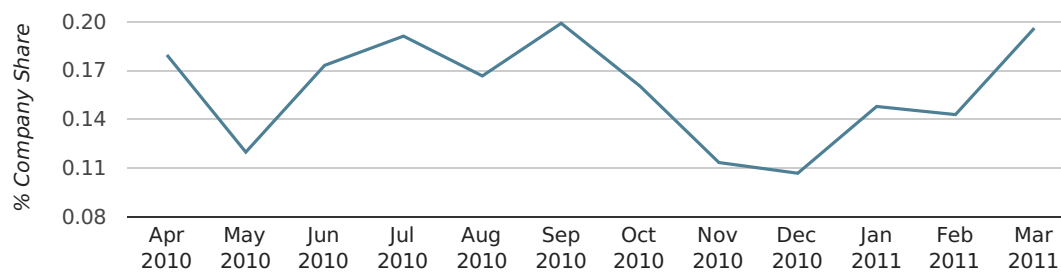
FIRST QUARTER (JAN 2011 - MAR 2011)	CHESTERFIELD
2011	0.2%
2010	0.2%
2009	0.2%
2008	0.2%
2007	0.1%
RECORD YEAR (SINCE 1960)	2000 (0.7%)

company share by quarter



Monthly Data (Jan, Feb & Mar 2011)

company share by month



	JANUARY	FEBRUARY	MARCH
UK FORMATION SHARE IN 2011	0.1%	0.1%	0.2%
UK FORMATION SHARE IN 2010	0.2%	0.2%	0.2%
% CHANGE	-2.0%	-32.2%	19.9%
RECORD YEAR	1967 (0.5%)	1974 (0.6%)	2000 (1.5%)

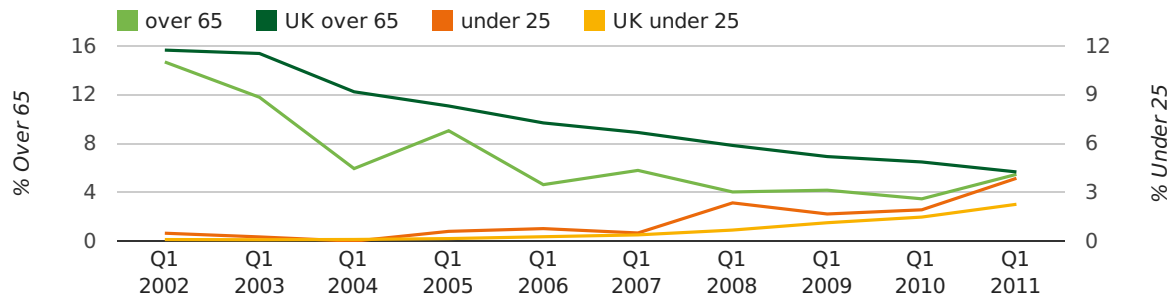
Quarterly Data (Q1 Jan-Mar 2011)

The average age of a director in the first quarter of 2011 was 45.5.

The percentage of directors under the age of 25 was 3.9% compared to the UK figure of 3.0%.

The percentage of directors over the age of 65 was 5.5% compared to the UK figure of 4.3%.

director age by quarter

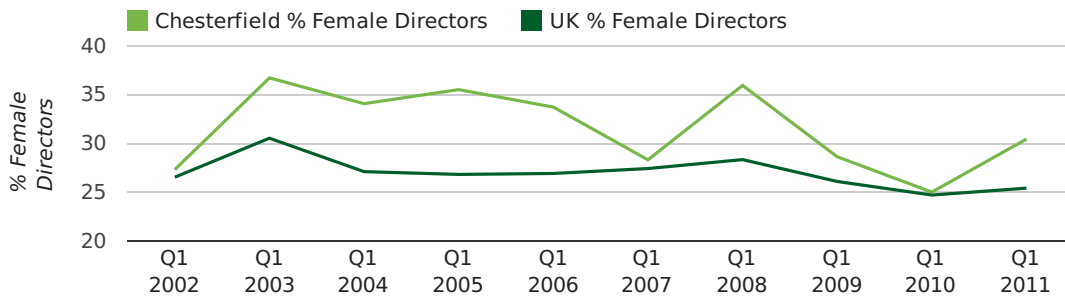


Quarterly Data (Q1 Jan-Mar 2011)

The record first quarter for female directors in Chesterfield was in 1861 when 40.0% of all directors were female.

30.4% of all director appointments in Chesterfield in the first quarter of 2011 were female. This compares to a UK average of 25.4% for the same period.

director gender by quarter



Previous 12 months (Mar 2010-Mar 2011)

Excluding: LIMITED, LTD, &, UK, SERVICES, THE, (UK), AND, LTD., A, LLP, SOLUTIONS, COMPANY, OF.

WORD	PERCENTAGE	UK WORD	UK PERCENTAGE
(CHESTERFIELD)	1.56%	CONSULTING	5.04%
CHESTERFIELD	1.28%	MANAGEMENT	4.97%
MANAGEMENT	1.10%	CONSULTANCY	3.16%
SPIRE	1.01%	PROPERTY	2.38%
PROPERTY	1.01%	TRADING	2.10%
ENGINEERING	0.92%	DESIGN	1.93%
DESIGN	0.83%	ASSOCIATES	1.92%
CARE	0.83%	BUSINESS	1.87%
TRAINING	0.73%	CONSTRUCTION	1.80%
J	0.64%	CONSULTANTS	1.76%
CONSULTANCY	0.64%	MEDIA	1.69%
ASSOCIATES	0.64%	ENGINEERING	1.61%
BUILDING	0.64%	LONDON	1.60%
MEDICAL	0.64%	CARE	1.45%
LEISURE	0.64%	J	1.45%
DERBYSHIRE	0.64%	GLOBAL	1.44%
SYSTEMS	0.55%	INVESTMENTS	1.43%
S	0.55%	IT	1.41%
ELECTRICAL	0.55%	PROPERTIES	1.36%
JOINERY	0.55%	BUILDING	1.34%
DEVELOPMENTS	0.55%	M	1.30%
INDEPENDENT	0.55%	ELECTRICAL	1.28%
CONSULTING	0.55%	S	1.24%
SECURITY	0.46%	INTERNATIONAL	1.23%
HOME	0.46%	SYSTEMS	1.23%

Previous 36 months, excluding companies less than 12 months old

SIC CODE	NUMBER OF COMPANIES	UK COMPANIES
None Supplied	283	202,798
7487 - Other business activities	85	60,968
9999 - Dormant Company	43	19,765
99999 - Dormant Company	31	18,336
82990 - Other business support service activities not elsewhere classified	25	30,253
96090 - Other service activities not elsewhere classified	20	10,085
74909 - Other professional, scientific and technical activities not elsewhere classified	20	7,788
7414 - Business & management consultancy	17	12,916
62090 - Other information technology service activities	14	6,996
70229 - Management consultancy activities other than financial management	14	16,150
43210 - Electrical installation	14	3,172
4521 - General construction & civil engineering	12	6,183
7222 - Other software consultancy and supply	11	7,000
96020 - Hairdressing and other beauty treatment	10	2,073
5248 - Other retail specialised stores	9	1,957
69201 - Accounting and auditing activities	9	3,436
43999 - Other specialised construction activities not elsewhere classified	9	3,097
45200 - Maintenance and repair of motor vehicles	9	2,259
62020 - Information technology consultancy activities	9	10,246
4545 - Other building completion	8	2,483