

# Devon

q1 2012 business confidence report



## contents

new company registrations

closed companies (dissolved)

net company growth

uk company share

director age

director gender

naming trends

sic data

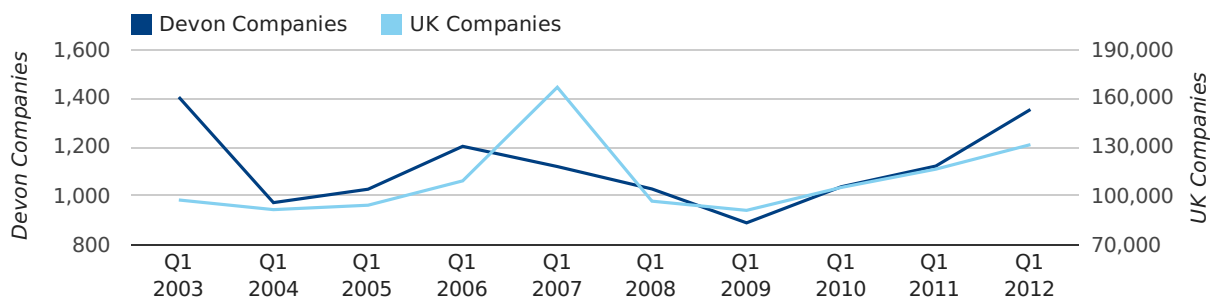
### Quarterly Data (Q1 Jan-Mar 2012)

A total of 1,354 companies were registered in Devon during the first quarter of 2012 (Jan 2012 - Mar 2012).

This figure is an increase of 20.7% versus the same period last year (Q1 2011). This figure compares well to the UK as a whole, which saw an increase of 13.0% against the same period last year.

FIRST QUARTER (JAN 2012 - MAR 2012)	DEVON	UK
2012	1,354	131,491
2011	1,122	116,391
% CHANGE	20.7%	13.0%
RECORD YEAR	2003 (1,405)	2007 (166,814)

### new companies by quarter



### Monthly Data (Jan, Feb & Mar 2012)

### new companies by month



	JANUARY	FEBRUARY	MARCH
NEW COMPANIES IN 2012	360	454	540
NEW COMPANIES IN 2011	318	368	436
% CHANGE	13.2%	23.4%	23.9%
RECORD YEAR	2003 (404)	2006 (479)	2003 (551)

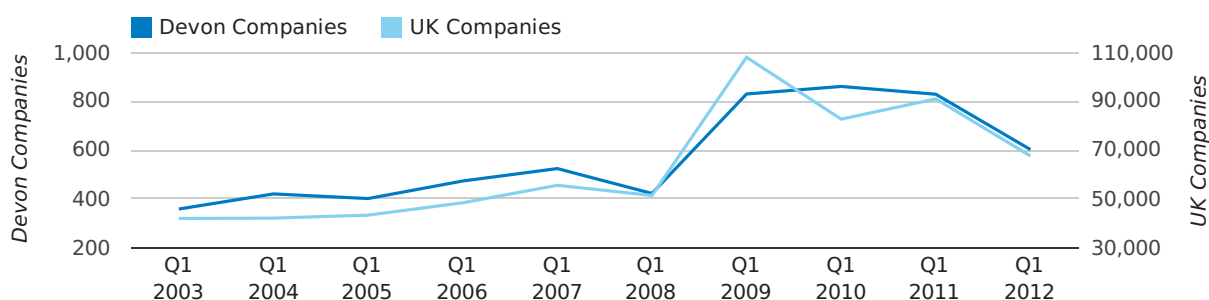
### Quarterly Data (Q1 Jan-Mar 2012)

A total of 602 companies were dissolved in Devon during the first quarter of 2012 (Jan 2012 - Mar 2012).

This figure is a decrease of 27.4% versus the same period last year (Q1 2011). This figure compares well to the UK as a whole, which saw a decrease of 25.7% against the same period last year.

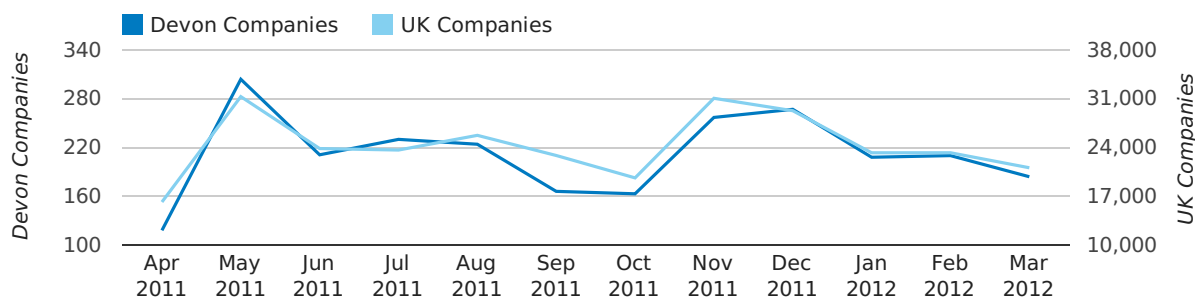
FIRST QUARTER (JAN 2012 - MAR 2012)	DEVON	UK
2012	602	67,576
2011	829	90,986
% CHANGE	-27.4%	-25.7%
RECORD YEAR	2010 (861)	2009 (108,060)

### dissolved companies by quarter



### Monthly Data (Jan, Feb & Mar 2012)

#### dissolved companies by month



	JANUARY	FEBRUARY	MARCH
CLOSED COMPANIES IN 2012	208	210	184
CLOSED COMPANIES IN 2011	325	189	315
% CHANGE	-36.0%	11.1%	-42%
RECORD YEAR	2011 (325)	2010 (269)	2009 (495)

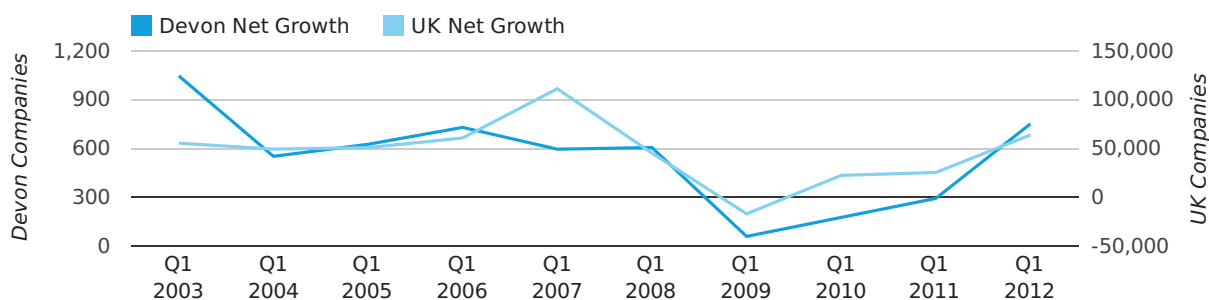
### Quarterly Data (Q1 Jan-Mar 2012)

Net company growth for Devon during the first quarter of 2012 (Jan 2012 - Mar 2012) was 752 companies.

This represents an increase of 156.7% on the same period last year.

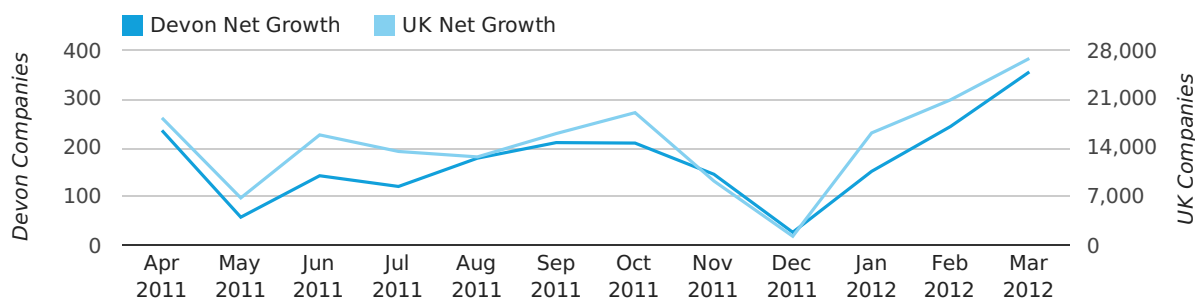
FIRST QUARTER (JAN 2012 - MAR 2012)	DEVON	UK
2012	752	63,915
2011	293	25,405
% CHANGE	156.7%	151.6%
RECORD YEAR	2003 (1,047)	2007 (111,282)

### net growth by quarter



### Monthly Data (Jan, Feb & Mar 2012)

### net growth by month



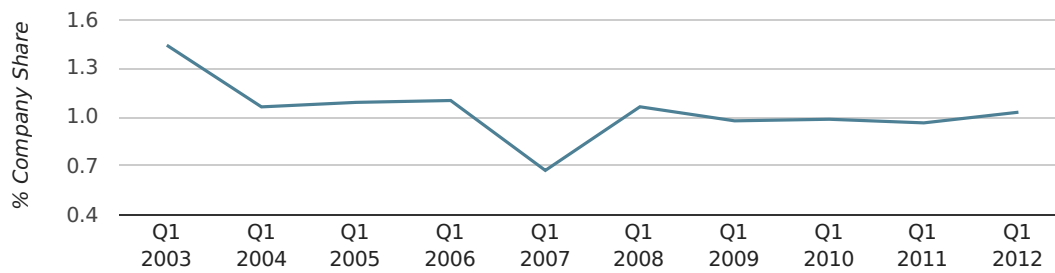
	JANUARY	FEBRUARY	MARCH
NET GROWTH IN 2012	152	244	356
NET GROWTH IN 2011	-7	179	121
% CHANGE	-2,271.4%	36.3%	194.2%
RECORD YEAR	2003 (261)	2006 (343)	2003 (444)

### Quarterly Data (Q1 Jan-Mar 2012)

In the first quarter of 2012, Devon formed 1.0% of all UK companies.

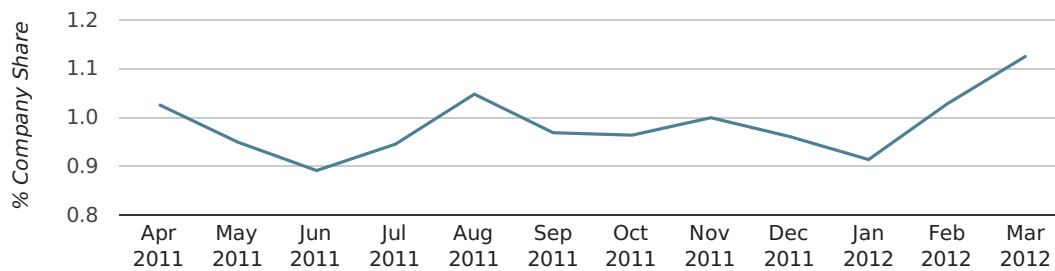
FIRST QUARTER (JAN 2012 - MAR 2012)	DEVON
2012	1.0%
2011	1.0%
2010	1.0%
2009	1.0%
2008	1.1%
RECORD YEAR (SINCE 1960)	1961 (1.7%)

### company share by quarter



### Monthly Data (Jan, Feb & Mar 2012)

### company share by month



	JANUARY	FEBRUARY	MARCH
UK FORMATION SHARE IN 2012	0.9%	1.0%	1.1%
UK FORMATION SHARE IN 2011	0.9%	1.0%	1.0%
% CHANGE	-2.9%	5.5%	15.9%
RECORD YEAR	1966 (1.8%)	1961 (1.8%)	1963 (2.0%)

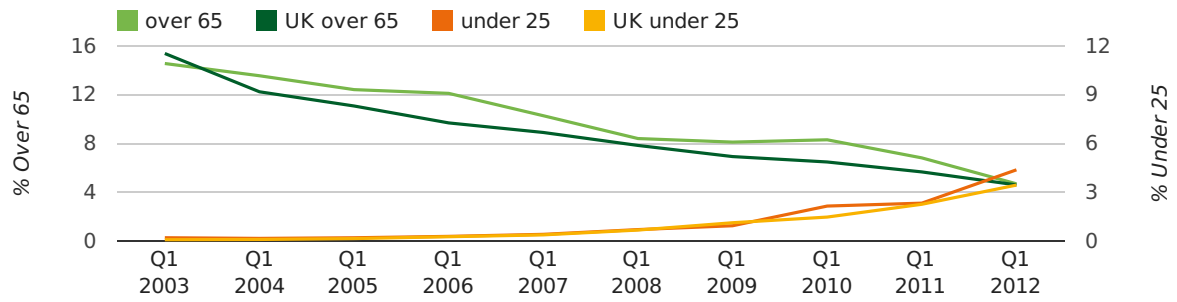
### Quarterly Data (Q1 Jan-Mar 2012)

The average age of a director in the first quarter of 2012 was 44.7.

The percentage of directors under the age of 25 was 4.4% compared to the UK figure of 4.6%.

The percentage of directors over the age of 65 was 4.7% compared to the UK figure of 3.5%.

### director age by quarter



## Previous 12 months (Mar 2011-Mar 2012)

Excluding: LIMITED, LTD, &amp;, UK, SERVICES, THE, (UK), AND, LTD., A, LLP, SOLUTIONS, COMPANY, OF.

WORD	PERCENTAGE	UK WORD	UK PERCENTAGE
MANAGEMENT	2.75%	CONSULTING	5.07%
DEVON	1.68%	MANAGEMENT	4.74%
SOUTH	1.50%	CONSULTANCY	3.30%
WEST	1.41%	PROPERTY	2.37%
PROPERTY	1.26%	TRADING	2.07%
CONSULTING	1.26%	DESIGN	1.93%
(Sw)	1.14%	ENGINEERING	1.86%
PLYMOUTH	0.90%	ASSOCIATES	1.84%
CARE	0.85%	CONSULTANTS	1.79%
CONSTRUCTION	0.85%	BUSINESS	1.73%
SOLAR	0.85%	MEDIA	1.72%
CONSULTANCY	0.81%	CONSTRUCTION	1.72%
DESIGN	0.76%	LONDON	1.66%
M	0.72%	J	1.54%
TRAINING	0.70%	INVESTMENTS	1.51%
TRADING	0.70%	GLOBAL	1.50%
BUILDING	0.70%	IT	1.40%
MEDIA	0.69%	CARE	1.34%
HOUSE	0.69%	PROPERTIES	1.31%
J	0.67%	ELECTRICAL	1.27%
BUSINESS	0.67%	M	1.27%
ENERGY	0.63%	BUILDING	1.24%
SECURITY	0.63%	ENERGY	1.20%
ASSOCIATES	0.63%	S	1.20%
TRUST	0.60%	ENTERPRISES	1.19%



## Previous 36 months, excluding companies less than 12 months old

SIC CODE	NUMBER OF COMPANIES	UK COMPANIES
None Supplied	1,560	216,665
7487 - Other business activities	375	52,735
82990 - Other business support service activities not elsewhere classified	245	35,233
99999 - Dormant Company	222	25,084
70229 - Management consultancy activities other than financial management	152	19,704
9999 - Dormant Company	150	18,617
96090 - Other service activities not elsewhere classified	108	13,637
74909 - Other professional, scientific and technical activities not elsewhere classified	107	9,892
41100 - Development of building projects	98	4,984
98000 - Residents property management	93	3,050
4521 - General construction & civil engineering	80	5,169
62090 - Other information technology service activities	76	8,145
7499 - Non-trading company	72	9,102
74990 - Non-trading company	71	9,729
9305 - Other service activities	70	8,818
7414 - Business & management consultancy	69	12,113
43999 - Other specialised construction activities not elsewhere classified	68	3,931
62020 - Information technology consultancy activities	65	14,303
43210 - Electrical installation	65	3,573
68209 - Other letting and operating of own or leased real estate	64	4,427