

# Dudley

q3 2011 business confidence report



## headlines

- Q3 2011 saw a new record in company registrations in Dudley when compared to any previous Q3.
- Q3 2011 was a record quarter for company registrations in Dudley when compared to any quarter in history.
- August 2011 saw a new record in company registrations in Dudley when compared to any previous August.
- July 2011 saw a new record in company registrations in Dudley when compared to any previous July.
- Q3 2011 saw a new record in net growth in Dudley when compared to any previous Q3.
- August 2011 saw a new record in net growth in Dudley when compared to any previous August.
- July 2011 saw a new record in net growth in Dudley when compared to any previous July.

## contents

new company registrations

closed companies (dissolved)

net company growth

uk company share

director age

director gender

naming trends

sic data

### Quarterly Data (Q3 Jul-Sep 2011)

Q3 2011 saw a new record in company registrations in Dudley when compared to any previous Q3.

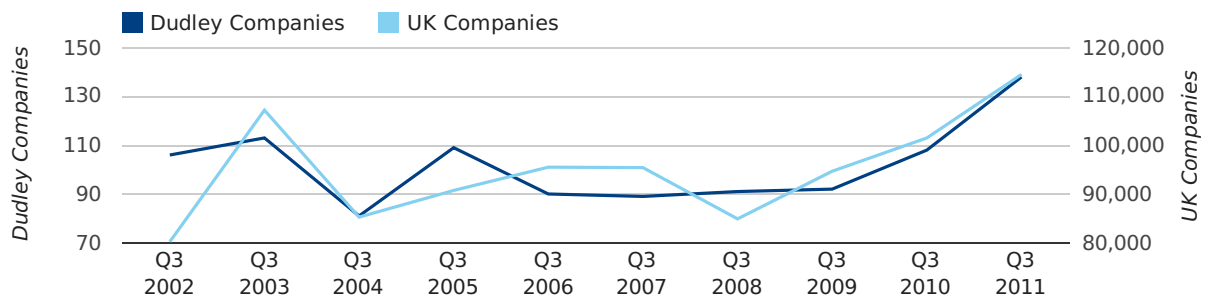
Q3 2011 was a record quarter for company registrations in Dudley when compared to any quarter in history.

A total of 138 companies were registered in Dudley during the third quarter of 2011 (Jul 2011 - Sep 2011).

This figure is an increase of 27.8% versus the same period last year (Q3 2010). This figure compares well to the UK as a whole, which saw an increase of 12.8% against the same period last year.

THIRD QUARTER (JUL 2011 - SEP 2011)	DUDLEY	UK
2011	138	114,512
2010	108	101,492
% CHANGE	27.8%	12.8%
RECORD YEAR	2011 (138)	2011 (114,512)

### new companies by quarter



### Monthly Data (Jul, Aug & Sep 2011)

August 2011 saw a new record in company registrations in Dudley when compared to any previous August.

July 2011 saw a new record in company registrations in Dudley when compared to any previous July.

### new companies by month



	JULY	AUGUST	SEPTEMBER
NEW COMPANIES IN 2011	50	51	37
NEW COMPANIES IN 2010	39	42	27
% CHANGE	28.2%	21.4%	37.0%
RECORD YEAR	2011 (50)	2011 (51)	2003 (42)



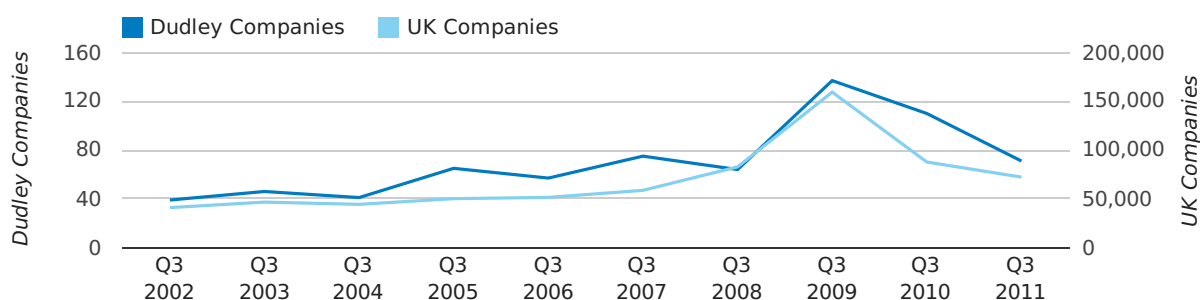
### Quarterly Data (Q3 Jul-Sep 2011)

A total of 71 companies were dissolved in Dudley during the third quarter of 2011 (Jul 2011 - Sep 2011).

This figure is a decrease of 35.5% versus the same period last year (Q3 2010). This figure compares well to the UK as a whole, which saw a decrease of 17.6% against the same period last year.

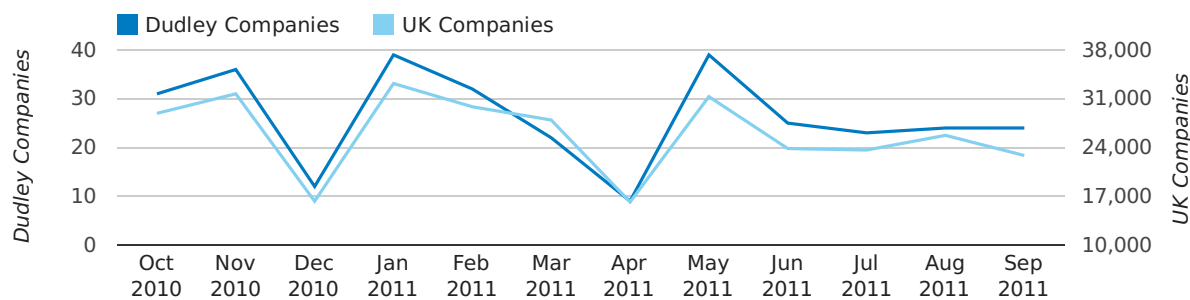
THIRD QUARTER (JUL 2011 - SEP 2011)	DUDLEY	UK
2011	71	72,230
2010	110	87,705
% CHANGE	-35.5%	-17.6%
RECORD YEAR	2009 (137)	2009 (159,401)

### dissolved companies by quarter



### Monthly Data (Jul, Aug & Sep 2011)

### dissolved companies by month



	JULY	AUGUST	SEPTEMBER
CLOSED COMPANIES IN 2011	23	24	24
CLOSED COMPANIES IN 2010	32	35	43
% CHANGE	-28.1%	-31.4%	-44%
RECORD YEAR	2009 (34)	2008 (43)	2009 (61)

### Quarterly Data (Q3 Jul-Sep 2011)

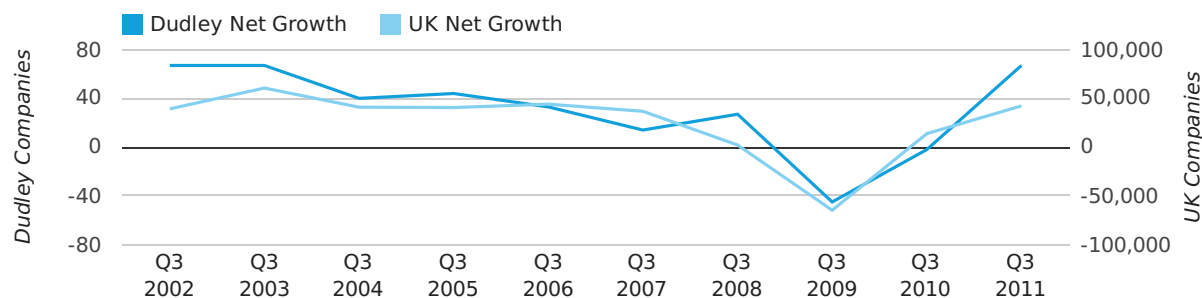
Q3 2011 saw a new record in net growth in Dudley when compared to any previous Q3.

Net company growth for Dudley during the third quarter of 2011 (Jul 2011 - Sep 2011) was 67 companies.

This represents an increase of 3,450.0% on the same period last year.

THIRD QUARTER (JUL 2011 - SEP 2011)	DUDLEY	UK
2011	67	42,282
2010	-2	13,787
% CHANGE	-3,450.0%	206.7%
RECORD YEAR	2003 (67)	2003 (60,597)

### net growth by quarter

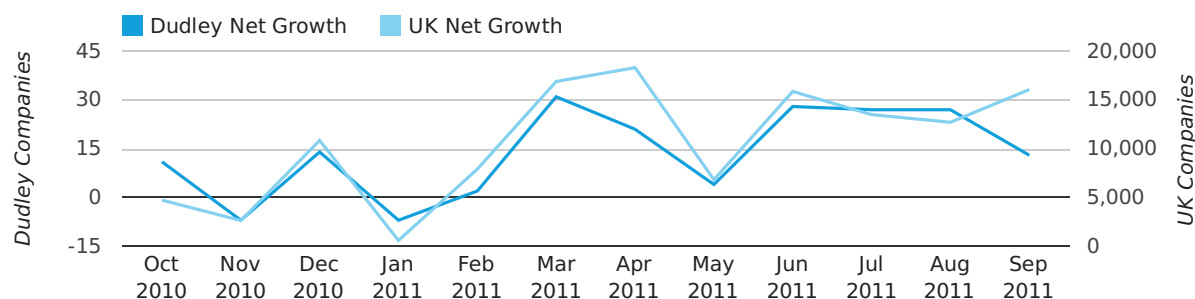


### Monthly Data (Jul, Aug & Sep 2011)

August 2011 saw a new record in net growth in Dudley when compared to any previous August.

July 2011 saw a new record in net growth in Dudley when compared to any previous July.

### net growth by month



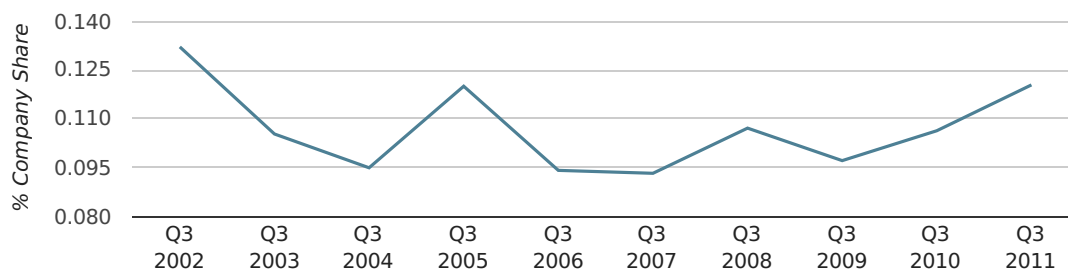
	JULY	AUGUST	SEPTEMBER
NET GROWTH IN 2011	27	27	13
NET GROWTH IN 2010	7	7	-16
% CHANGE	285.7%	285.7%	-181.3%
RECORD YEAR	2011 (27)	2011 (27)	2002 (34)

### Quarterly Data (Q3 Jul-Sep 2011)

In the third quarter of 2011, Dudley formed 0.1% of all UK companies.

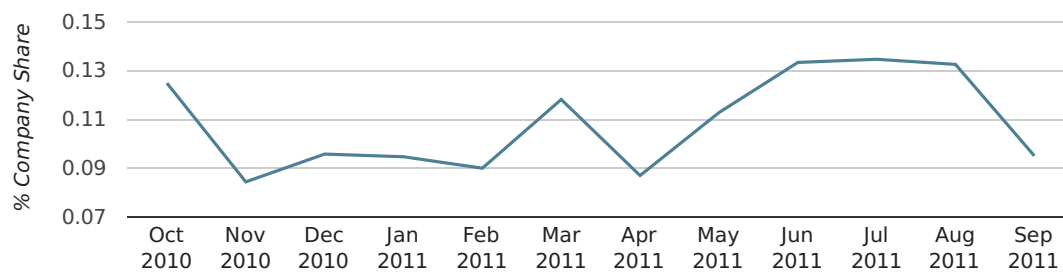
THIRD QUARTER (JUL 2011 - SEP 2011)	DUDLEY
2011	0.1%
2010	0.1%
2009	0.1%
2008	0.1%
2007	0.1%
RECORD YEAR (SINCE 1960)	1962 (0.4%)

### company share by quarter



### Monthly Data (Jul, Aug & Sep 2011)

### company share by month



	JULY	AUGUST	SEPTEMBER
UK FORMATION SHARE IN 2011	0.1%	0.1%	0.1%
UK FORMATION SHARE IN 2010	0.1%	0.1%	0.1%
% CHANGE	17.3%	2.2%	23.8%
RECORD YEAR	1964 (0.8%)	1965 (0.7%)	1974 (0.8%)

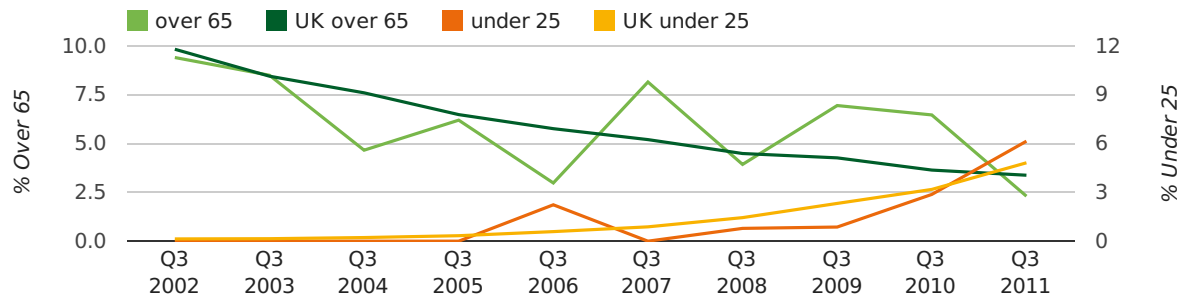
### Quarterly Data (Q3 Jul-Sep 2011)

The average age of a director in the third quarter of 2011 was 41.4.

The percentage of directors under the age of 25 was 6.2% compared to the UK figure of 4.0%.

The percentage of directors over the age of 65 was 2.3% compared to the UK figure of 4.1%.

#### director age by quarter



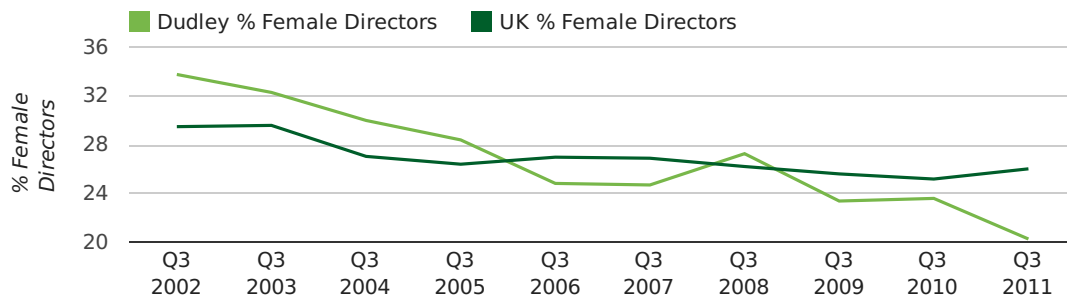


### Quarterly Data (Q3 Jul-Sep 2011)

The record third quarter for female directors in Dudley was in 1862 when 50.0% of all directors were female.

20.3% of all director appointments in Dudley in the third quarter of 2011 were female. This compares to a UK average of 26.0% for the same period.

### director gender by quarter



## Previous 12 months (Sep 2010-Sep 2011)

Excluding: LIMITED, LTD, &, UK, SERVICES, THE, (UK), AND, LTD., A, LLP, SOLUTIONS, COMPANY, OF.

WORD	PERCENTAGE	UK WORD	UK PERCENTAGE
LOGISTICS	1.82%	CONSULTING	5.11%
TRANSPORT	1.70%	MANAGEMENT	4.75%
D	1.58%	CONSULTANCY	3.19%
M	1.22%	PROPERTY	2.41%
R	1.09%	TRADING	2.06%
BUSINESS	0.85%	DESIGN	1.94%
C	0.85%	ASSOCIATES	1.85%
J	0.85%	BUSINESS	1.82%
B	0.85%	CONSULTANTS	1.76%
T	0.73%	ENGINEERING	1.74%
DUDLEY	0.73%	MEDIA	1.72%
DRIVING	0.73%	CONSTRUCTION	1.72%
MIDLANDS	0.73%	LONDON	1.63%
CONSTRUCTION	0.73%	J	1.47%
N	0.61%	GLOBAL	1.46%
P	0.61%	INVESTMENTS	1.43%
SECURITY	0.61%	CARE	1.42%
S	0.61%	IT	1.38%
CARE	0.61%	BUILDING	1.30%
CENTRE	0.61%	PROPERTIES	1.28%
MANAGEMENT	0.61%	ELECTRICAL	1.27%
(MIDLANDS)	0.61%	M	1.25%
ENGINEERING	0.61%	ENERGY	1.22%
ENERGY	0.61%	TRAINING	1.21%
IT	0.61%	S	1.21%

## Previous 36 months, excluding companies less than 12 months old

SIC CODE	NUMBER OF COMPANIES	UK COMPANIES
None Supplied	215	204,493
7487 - Other business activities	59	65,177
9999 - Dormant Company	29	22,587
99999 - Dormant Company	22	18,281
82990 - Other business support service activities not elsewhere classified	15	29,245
74990 - Non-trading company	14	8,064
96090 - Other service activities not elsewhere classified	13	10,018
70229 - Management consultancy activities other than financial management	12	15,760
43210 - Electrical installation	11	2,938
5540 - Bars	11	2,379
7499 - Non-trading company	10	11,543
7260 - Other computer related activities	9	8,686
45200 - Maintenance and repair of motor vehicles	9	2,179
7414 - Business & management consultancy	9	14,755
4521 - General construction & civil engineering	9	6,321
9305 - Other service activities	8	10,525
43999 - Other specialised construction activities not elsewhere classified	8	2,917
4531 - Installation electrical wiring etc.	7	2,234
86210 - General medical practice activities	7	1,986
88990 - Other social work activities without accommodation not elsewhere classified	6	1,391