

# Dunstable

q3 2011 business confidence report



## headlines

- September 2011 saw a new record in company registrations in Dunstable when compared to any previous September.
- September 2011 saw a new record in net growth in Dunstable when compared to any previous September.

## contents

new company registrations

closed companies (dissolved)

net company growth

uk company share

director age

director gender

naming trends

sic data

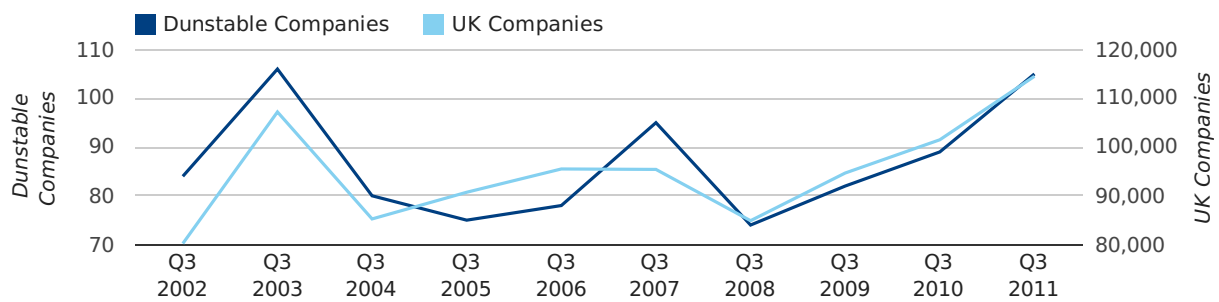
### Quarterly Data (Q3 Jul-Sep 2011)

A total of 105 companies were registered in Dunstable during the third quarter of 2011 (Jul 2011 - Sep 2011).

This figure is an increase of 18.0% versus the same period last year (Q3 2010). This figure compares well to the UK as a whole, which saw an increase of 12.8% against the same period last year.

THIRD QUARTER (JUL 2011 - SEP 2011)	DUNSTABLE	UK
2011	105	114,512
2010	89	101,492
% CHANGE	18.0%	12.8%
RECORD YEAR	2003 (106)	2011 (114,512)

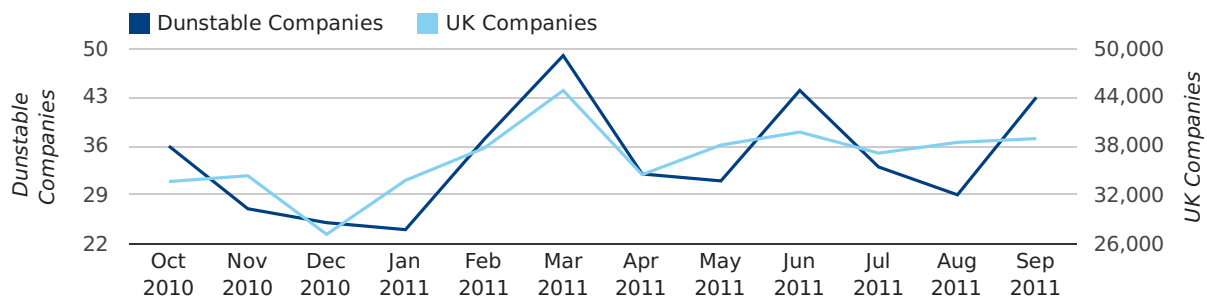
### new companies by quarter



### Monthly Data (Jul, Aug & Sep 2011)

September 2011 saw a new record in company registrations in Dunstable when compared to any previous September.

### new companies by month



	JULY	AUGUST	SEPTEMBER
NEW COMPANIES IN 2011	33	29	43
NEW COMPANIES IN 2010	27	31	31
% CHANGE	22.2%	-6.5%	38.7%
RECORD YEAR	2009 (34)	2003 (35)	2011 (43)

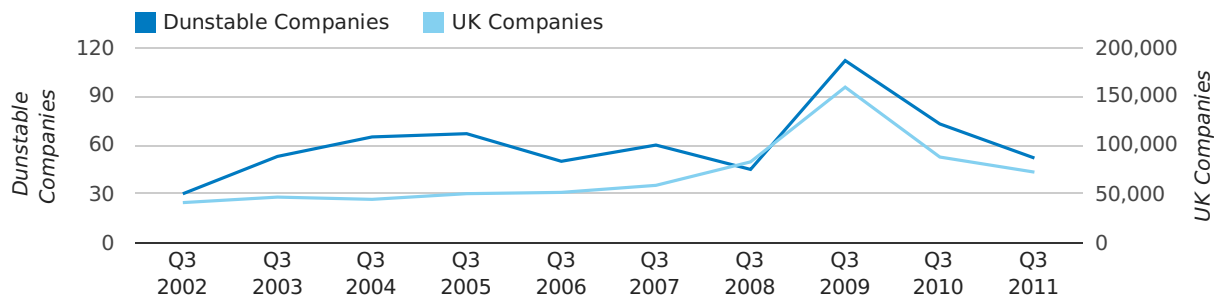
### Quarterly Data (Q3 Jul-Sep 2011)

A total of 52 companies were dissolved in Dunstable during the third quarter of 2011 (Jul 2011 - Sep 2011).

This figure is a decrease of 28.8% versus the same period last year (Q3 2010). This figure compares well to the UK as a whole, which saw a decrease of 17.6% against the same period last year.

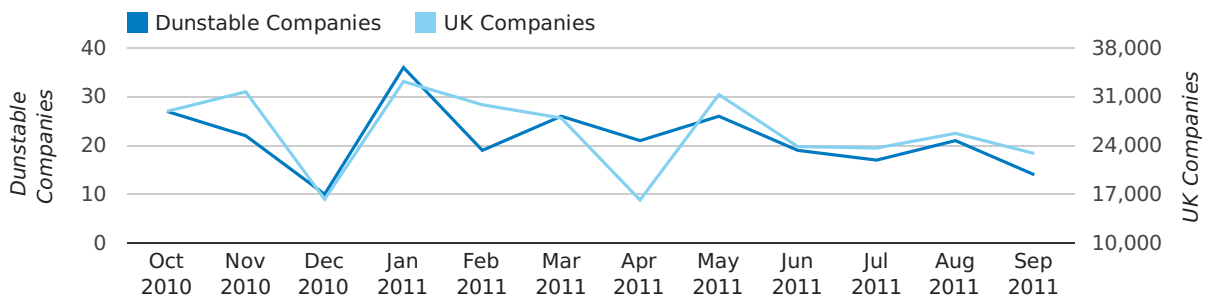
THIRD QUARTER (JUL 2011 - SEP 2011)	DUNSTABLE	UK
2011	52	72,230
2010	73	87,705
% CHANGE	-28.8%	-17.6%
RECORD YEAR	2009 (112)	2009 (159,401)

### dissolved companies by quarter



### Monthly Data (Jul, Aug & Sep 2011)

### dissolved companies by month



	JULY	AUGUST	SEPTEMBER
CLOSED COMPANIES IN 2011	17	21	14
CLOSED COMPANIES IN 2010	19	37	17
% CHANGE	-10.5%	-43.2%	-18%
RECORD YEAR	2009 (32)	2010 (37)	2009 (49)

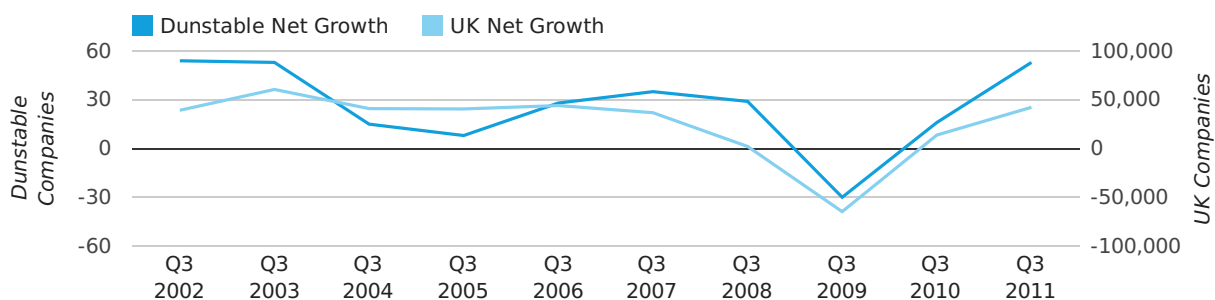
### Quarterly Data (Q3 Jul-Sep 2011)

Net company growth for Dunstable during the third quarter of 2011 (Jul 2011 - Sep 2011) was 53 companies.

This represents an increase of 231.3% on the same period last year.

THIRD QUARTER (JUL 2011 - SEP 2011)	DUNSTABLE	UK
2011	53	42,282
2010	16	13,787
% CHANGE	231.3%	206.7%
RECORD YEAR	2002 (54)	2003 (60,597)

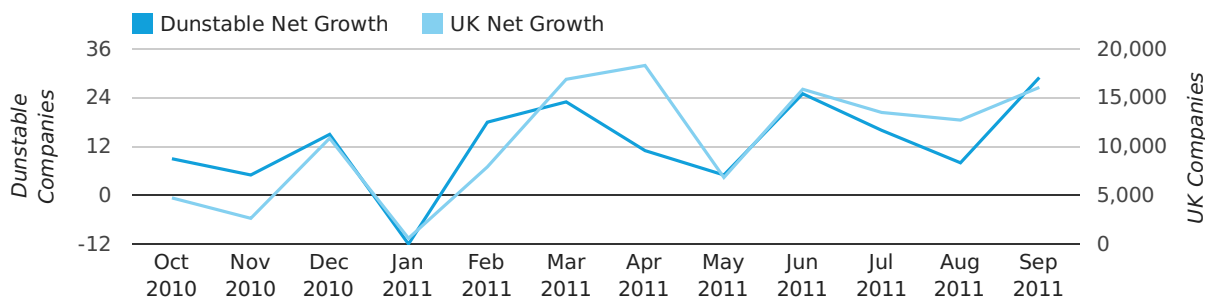
### net growth by quarter



### Monthly Data (Jul, Aug & Sep 2011)

September 2011 saw a new record in net growth in Dunstable when compared to any previous September.

### net growth by month



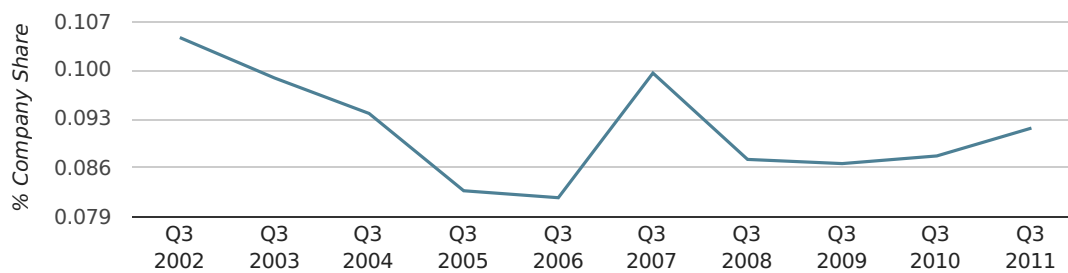
	JULY	AUGUST	SEPTEMBER
NET GROWTH IN 2011	16	8	29
NET GROWTH IN 2010	8	-6	14
% CHANGE	100.0%	-233.3%	107.1%
RECORD YEAR	2008 (25)	2003 (27)	2011 (29)

### Quarterly Data (Q3 Jul-Sep 2011)

In the third quarter of 2011, Dunstable formed 0.1% of all UK companies.

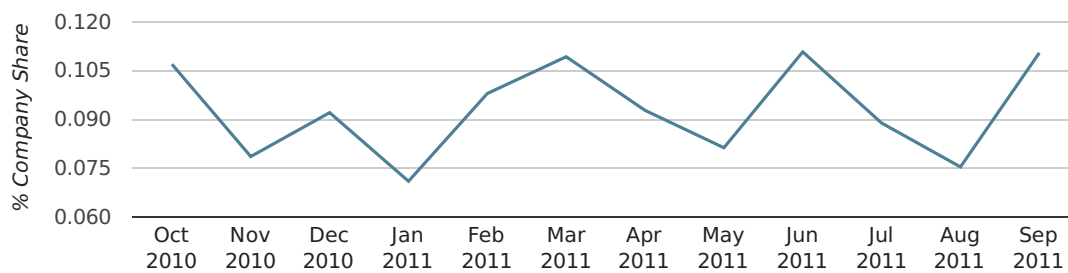
THIRD QUARTER (JUL 2011 - SEP 2011)	DUNSTABLE
2011	0.1%
2010	0.1%
2009	0.1%
2008	0.1%
2007	0.1%
RECORD YEAR (SINCE 1960)	1962 (0.2%)

### company share by quarter



### Monthly Data (Jul, Aug & Sep 2011)

### company share by month



	JULY	AUGUST	SEPTEMBER
UK FORMATION SHARE IN 2011	0.1%	0.1%	0.1%
UK FORMATION SHARE IN 2010	0.1%	0.1%	0.1%
% CHANGE	11.8%	-21.3%	25.3%
RECORD YEAR	1976 (0.4%)	1982 (0.4%)	1970 (0.7%)

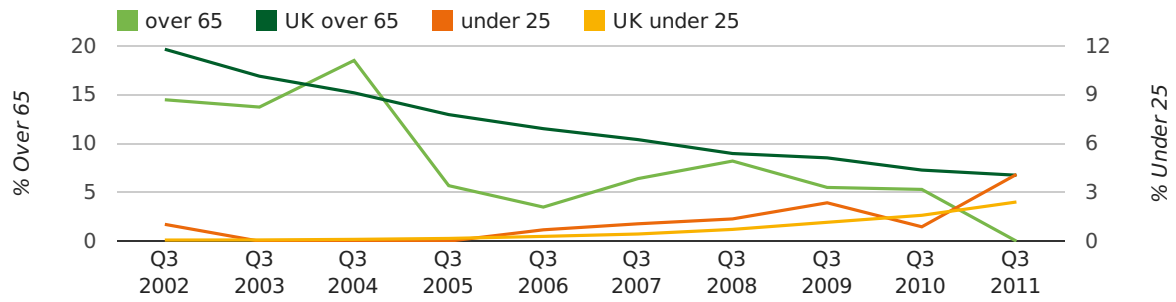
### Quarterly Data (Q3 Jul-Sep 2011)

The average age of a director in the third quarter of 2011 was 43.4.

The percentage of directors under the age of 25 was 4.1% compared to the UK figure of 4.0%.

The percentage of directors over the age of 65 was 0.0% compared to the UK figure of 4.1%.

#### director age by quarter

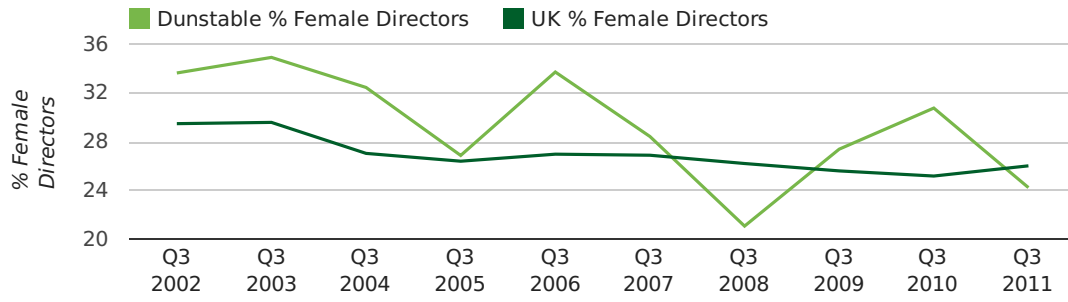


### Quarterly Data (Q3 Jul-Sep 2011)

The record third quarter for female directors in Dunstable was in 1862 when 50.0% of all directors were female.

24.2% of all director appointments in Dunstable in the third quarter of 2011 were female. This compares to a UK average of 26.0% for the same period.

### director gender by quarter





## Previous 12 months (Sep 2010-Sep 2011)

Excluding: LIMITED, LTD, &, UK, SERVICES, THE, (UK), AND, LTD., A, LLP, SOLUTIONS, COMPANY, OF.

WORD	PERCENTAGE	UK WORD	UK PERCENTAGE
CONSULTING	2.08%	CONSULTING	5.11%
CONSULTANCY	1.25%	MANAGEMENT	4.75%
ASSOCIATES	1.11%	CONSULTANCY	3.19%
TRADING	0.83%	PROPERTY	2.41%
ENGINEERING	0.83%	TRADING	2.06%
CONSTRUCTION	0.83%	DESIGN	1.94%
DESIGN	0.83%	ASSOCIATES	1.85%
24SEVEN	0.69%	BUSINESS	1.82%
C	0.69%	CONSULTANTS	1.76%
CARE	0.69%	ENGINEERING	1.74%
MEDIA	0.69%	MEDIA	1.72%
CLEAN	0.69%	CONSTRUCTION	1.72%
MANAGEMENT	0.69%	LONDON	1.63%
SYSTEMS	0.55%	J	1.47%
SCHOOL	0.55%	GLOBAL	1.46%
TRANSPORT	0.55%	INVESTMENTS	1.43%
ELECTRICAL	0.55%	CARE	1.42%
DUNSTABLE	0.55%	IT	1.38%
P	0.55%	BUILDING	1.30%
LOGISTICS	0.55%	PROPERTIES	1.28%
S	0.55%	ELECTRICAL	1.27%
J	0.55%	M	1.25%
CALL	0.55%	ENERGY	1.22%
(DUNSTABLE)	0.55%	TRAINING	1.21%
BUILDING	0.55%	S	1.21%

## Previous 36 months, excluding companies less than 12 months old

SIC CODE	NUMBER OF COMPANIES	UK COMPANIES
None Supplied	138	204,493
7487 - Other business activities	47	65,177
82990 - Other business support service activities not elsewhere classified	28	29,245
9999 - Dormant Company	22	22,587
70229 - Management consultancy activities other than financial management	20	15,760
62090 - Other information technology service activities	16	6,798
7414 - Business & management consultancy	15	14,755
99999 - Dormant Company	14	18,281
62020 - Information technology consultancy activities	14	10,137
7260 - Other computer related activities	14	8,686
74909 - Other professional, scientific and technical activities not elsewhere classified	12	7,551
49410 - Freight transport by road	10	2,049
7222 - Other software consultancy and supply	10	8,345
7499 - Non-trading company	9	11,543
96090 - Other service activities not elsewhere classified	9	10,018
43390 - Other building completion and finishing	8	2,545
74990 - Non-trading company	8	8,064
43320 - Joinery installation	8	1,064
43210 - Electrical installation	7	2,938
43999 - Other specialised construction activities not elsewhere classified	7	2,917