

Eastbourne

q1 2011 business confidence report



headlines

- January 2011 saw a new record in company closures in Eastbourne when compared to any previous January.

contents

new company registrations

closed companies (dissolved)

net company growth

uk company share

director age

director gender

naming trends

sic data

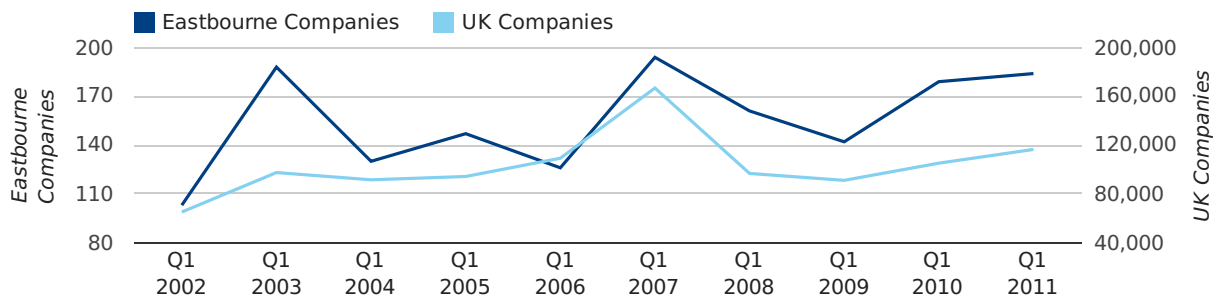
Quarterly Data (Q1 Jan-Mar 2011)

A total of 184 companies were registered in Eastbourne during the first quarter of 2011 (Jan 2011 - Mar 2011).

This figure is an increase of 2.8% versus the same period last year (Q1 2010). This figure compares badly to the UK as a whole, which saw an increase of 10.7% against the same period last year.

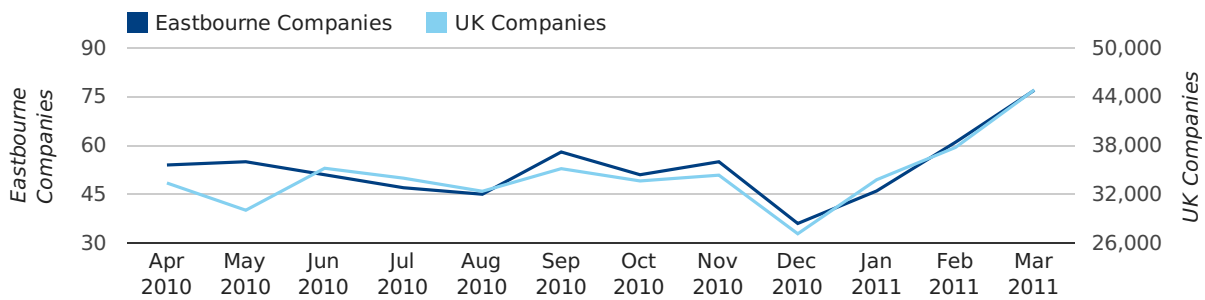
FIRST QUARTER (JAN 2011 - MAR 2011)	EASTBOURNE	UK
2011	184	116,391
2010	179	105,137
% CHANGE	2.8%	10.7%
RECORD YEAR	2007 (194)	2007 (166,814)

new companies by quarter



Monthly Data (Jan, Feb & Mar 2011)

new companies by month



	JANUARY	FEBRUARY	MARCH
NEW COMPANIES IN 2011	46	61	77
NEW COMPANIES IN 2010	39	56	84
% CHANGE	17.9%	8.9%	-8.3%
RECORD YEAR	2003 (53)	2003 (62)	2007 (89)

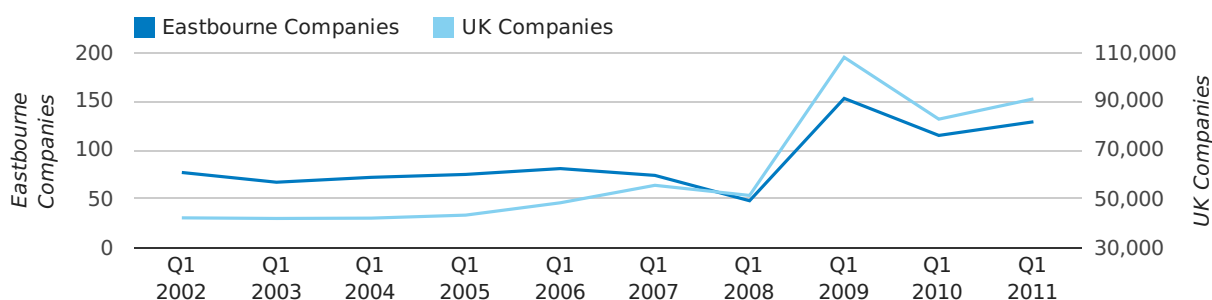
Quarterly Data (Q1 Jan-Mar 2011)

A total of 129 companies were dissolved in Eastbourne during the first quarter of 2011 (Jan 2011 - Mar 2011).

This figure is an increase of 12.2% versus the same period last year (Q1 2010). This figure compares poorly to the UK as a whole, which saw an increase of 10.0% against the same period last year.

FIRST QUARTER (JAN 2011 - MAR 2011)	EASTBOURNE	UK
2011	129	90,986
2010	115	82,677
% CHANGE	12.2%	10.0%
RECORD YEAR	2009 (153)	2009 (108,060)

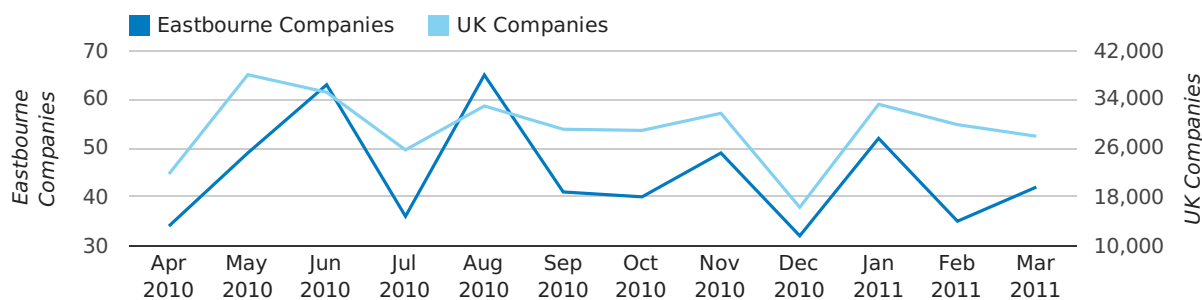
dissolved companies by quarter



Monthly Data (Jan, Feb & Mar 2011)

January 2011 saw a new record in company closures in Eastbourne when compared to any previous January.

dissolved companies by month



	JANUARY	FEBRUARY	MARCH
CLOSED COMPANIES IN 2011	52	35	42
CLOSED COMPANIES IN 2010	30	30	55
% CHANGE	73.3%	16.7%	-24%
RECORD YEAR	2011 (52)	2009 (36)	2009 (100)

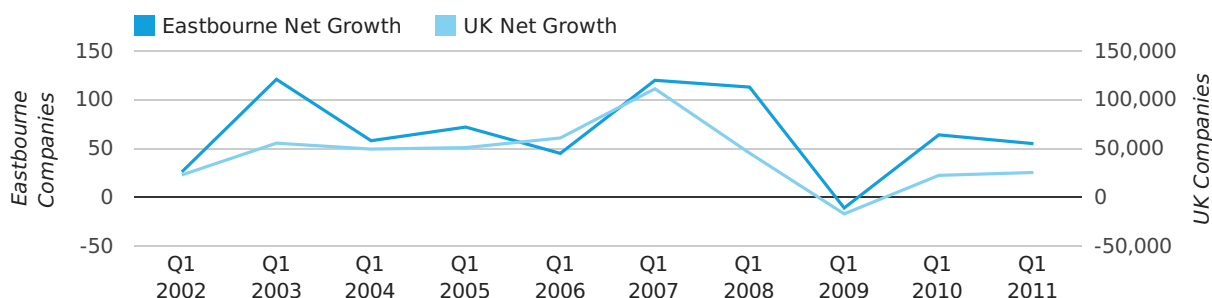
Quarterly Data (Q1 Jan-Mar 2011)

Net company growth for Eastbourne during the first quarter of 2011 (Jan 2011 - Mar 2011) was 55 companies.

This represents a decrease of 14.1% on the same period last year.

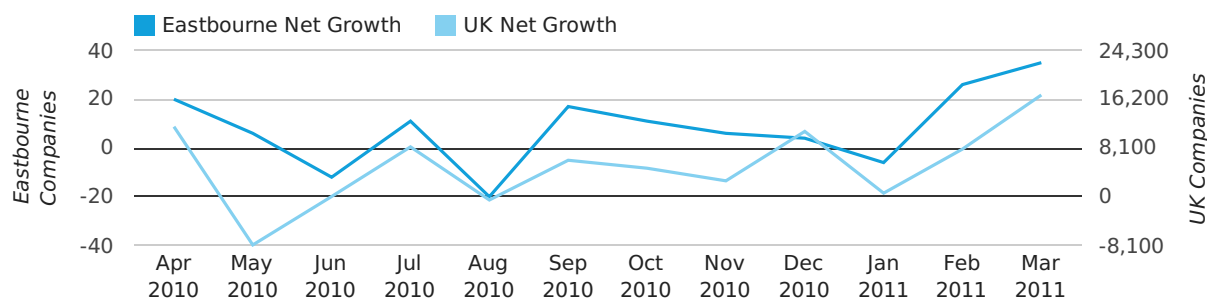
FIRST QUARTER (JAN 2011 - MAR 2011)	EASTBOURNE	UK
2011	55	25,405
2010	64	22,460
% CHANGE	-14.1%	13.1%
RECORD YEAR	2003 (121)	2007 (111,282)

net growth by quarter



Monthly Data (Jan, Feb & Mar 2011)

net growth by month



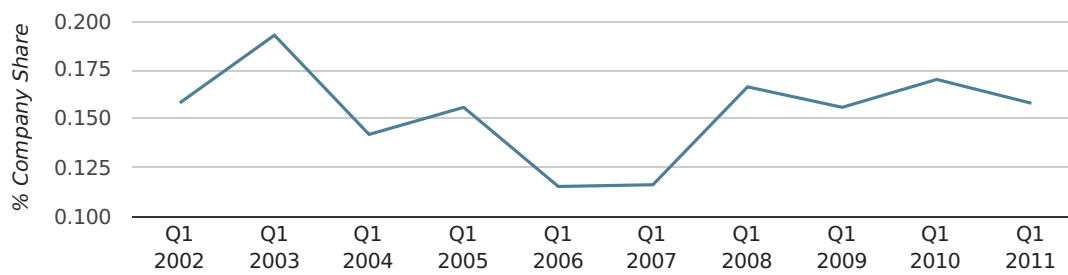
	JANUARY	FEBRUARY	MARCH
NET GROWTH IN 2011	-6	26	35
NET GROWTH IN 2010	9	26	29
% CHANGE	-166.7%	0.0%	20.7%
RECORD YEAR	2003 (37)	2003 (40)	2007 (57)

Quarterly Data (Q1 Jan-Mar 2011)

In the first quarter of 2011, Eastbourne formed 0.2% of all UK companies.

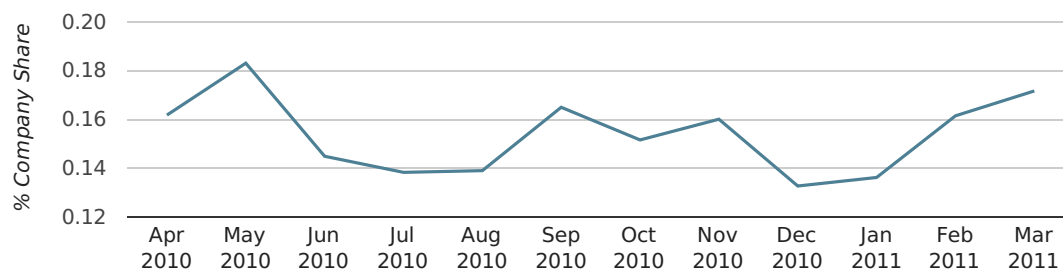
FIRST QUARTER (JAN 2011 - MAR 2011)	EASTBOURNE
2011	0.2%
2010	0.2%
2009	0.2%
2008	0.2%
2007	0.1%
RECORD YEAR (SINCE 1960)	1960 (0.4%)

company share by quarter



Monthly Data (Jan, Feb & Mar 2011)

company share by month



	JANUARY	FEBRUARY	MARCH
UK FORMATION SHARE IN 2011	0.1%	0.2%	0.2%
UK FORMATION SHARE IN 2010	0.1%	0.2%	0.2%
% CHANGE	1.8%	-4.2%	-12.6%
RECORD YEAR	1969 (0.6%)	1970 (0.6%)	1960 (0.5%)

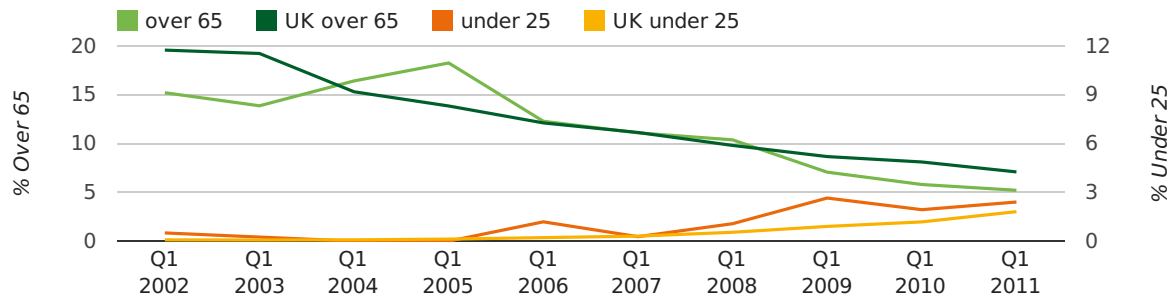
Quarterly Data (Q1 Jan-Mar 2011)

The average age of a director in the first quarter of 2011 was 45.6.

The percentage of directors under the age of 25 was 2.4% compared to the UK figure of 3.0%.

The percentage of directors over the age of 65 was 5.2% compared to the UK figure of 4.3%.

director age by quarter

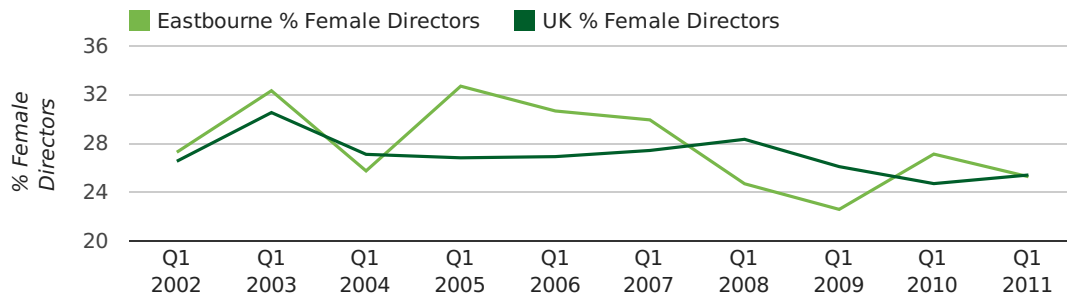


Quarterly Data (Q1 Jan-Mar 2011)

The record first quarter for female directors in Eastbourne was in 1861 when 40.0% of all directors were female.

25.3% of all director appointments in Eastbourne in the first quarter of 2011 were female. This compares to a UK average of 25.4% for the same period.

director gender by quarter



Previous 12 months (Mar 2010-Mar 2011)

Excluding: LIMITED, LTD, &, UK, SERVICES, THE, (UK), AND, LTD., A, LLP, SOLUTIONS, COMPANY, OF.

WORD	PERCENTAGE	UK WORD	UK PERCENTAGE
CONSTRUCTION	1.57%	CONSULTING	5.04%
PROPERTY	1.38%	MANAGEMENT	4.97%
MANAGEMENT	1.29%	CONSULTANCY	3.16%
SUSSEX	1.11%	PROPERTY	2.38%
EASTBOURNE	1.01%	TRADING	2.10%
EAST	0.92%	DESIGN	1.93%
SOUTH	0.92%	ASSOCIATES	1.92%
TRADING	0.74%	BUSINESS	1.87%
CONSULTING	0.74%	CONSTRUCTION	1.80%
CENTRE	0.65%	CONSULTANTS	1.76%
TRAINING	0.65%	MEDIA	1.69%
DR	0.65%	ENGINEERING	1.61%
S	0.65%	LONDON	1.60%
ASSOCIATES	0.55%	CARE	1.45%
GROUP	0.55%	J	1.45%
LONDON	0.55%	GLOBAL	1.44%
FOR	0.55%	INVESTMENTS	1.43%
CONSULTANTS	0.55%	IT	1.41%
SECURITY	0.55%	PROPERTIES	1.36%
TRUST	0.46%	BUILDING	1.34%
HEATING	0.46%	M	1.30%
LETTINGS	0.46%	ELECTRICAL	1.28%
CLEANING	0.46%	S	1.24%
EAST)	0.46%	INTERNATIONAL	1.23%
MEDICAL	0.46%	SYSTEMS	1.23%

Previous 36 months, excluding companies less than 12 months old

SIC CODE	NUMBER OF COMPANIES	UK COMPANIES
None Supplied	287	202,798
82990 - Other business support service activities not elsewhere classified	77	30,253
7487 - Other business activities	70	60,968
4521 - General construction & civil engineering	37	6,183
9999 - Dormant Company	36	19,765
99999 - Dormant Company	28	18,336
86900 - Other human health activities	21	4,092
70229 - Management consultancy activities other than financial management	20	16,150
7499 - Non-trading company	18	11,316
98000 - Residents property management	18	3,154
74990 - Non-trading company	17	8,695
86230 - Dental practice activities	16	1,418
96090 - Other service activities not elsewhere classified	16	10,085
4534 - Other building installation	15	2,285
62020 - Information technology consultancy activities	13	10,246
7260 - Other computer related activities	13	7,789
7414 - Business & management consultancy	12	12,916
43210 - Electrical installation	11	3,172
9305 - Other service activities	11	8,740
66120 - Security and commodity contracts dealing activities	11	120