

# Enfield

2011 half year business confidence report



## headlines

- Q2 2011 saw a new record in company registrations in Enfield when compared to any previous Q2.
- June 2011 saw a new record in company registrations in Enfield when compared to any previous June.
- May 2011 saw a new record in company registrations in Enfield when compared to any previous May.

## contents

new company registrations

closed companies (dissolved)

net company growth

uk company share

director age

director gender

naming trends

sic data

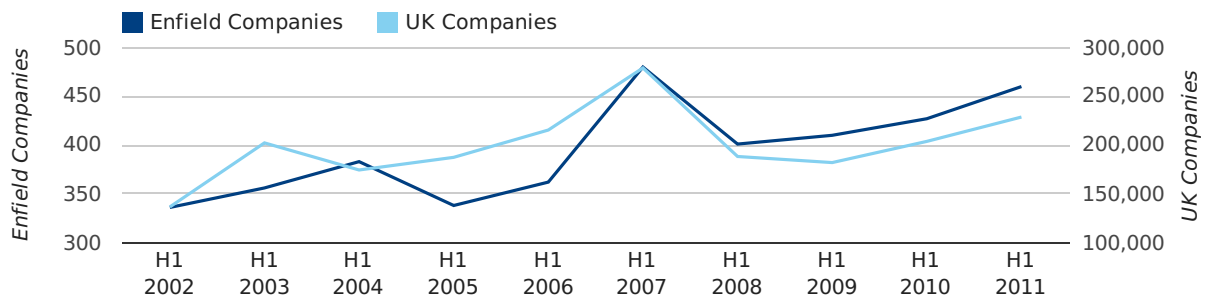
### Half Year Data (Jan-Jun 2011)

In the first half of 2011 a total of 460 companies were formed in Enfield. This figure is 7.7% higher than last year, which compares badly to the UK wide figure of 12.3%.

The highest total for a first half year in Enfield occurred in 2007 when a total of 480 were formed.

HALF YEAR (JAN-JUN)	ENFIELD	UK
2011	460	228,735
2010	427	203,749
% CHANGE	7.7%	12.3%
RECORD YEAR	2007 (480)	2007 (279,097)

### new companies by half year



### Quarterly Data (Q2 Apr-Jun 2011)

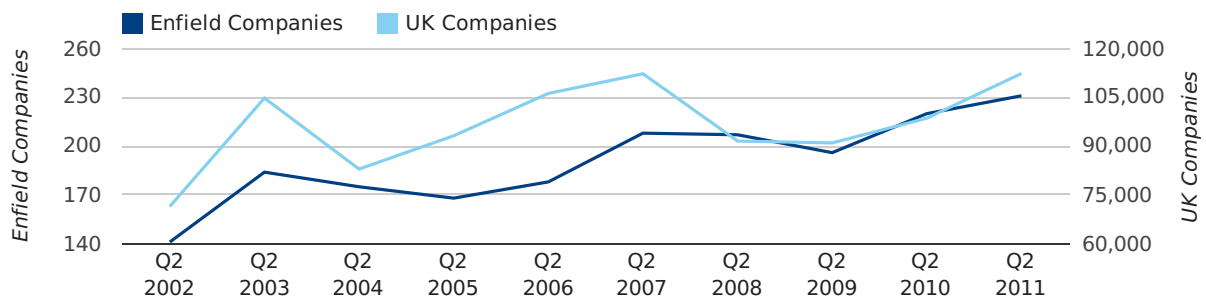
Q2 2011 saw a new record in company registrations in Enfield when compared to any previous Q2.

A total of 231 companies were registered in Enfield during the second quarter of 2011 (Apr 2011 - Jun 2011).

This figure is an increase of 5.0% versus the same period last year (Q2 2010). This figure compares equally to the UK as a whole, which saw an increase of 13.9% against the same period last year.

SECOND QUARTER (APR 2011 - JUN 2011)	ENFIELD	UK
2011	231	112,344
2010	220	98,612
% CHANGE	5.0%	13.9%
RECORD YEAR	2011 (231)	2011 (112,344)

### new companies by quarter



## Monthly Data (Apr, May & Jun 2011)

June 2011 saw a new record in company registrations in Enfield when compared to any previous June.

May 2011 saw a new record in company registrations in Enfield when compared to any previous May.

### new companies by month



	APRIL	MAY	JUNE
NEW COMPANIES IN 2011	62	74	95
NEW COMPANIES IN 2010	71	70	79
% CHANGE	-12.7%	5.7%	20.3%
RECORD YEAR	2008 (77)	2011 (74)	2011 (95)

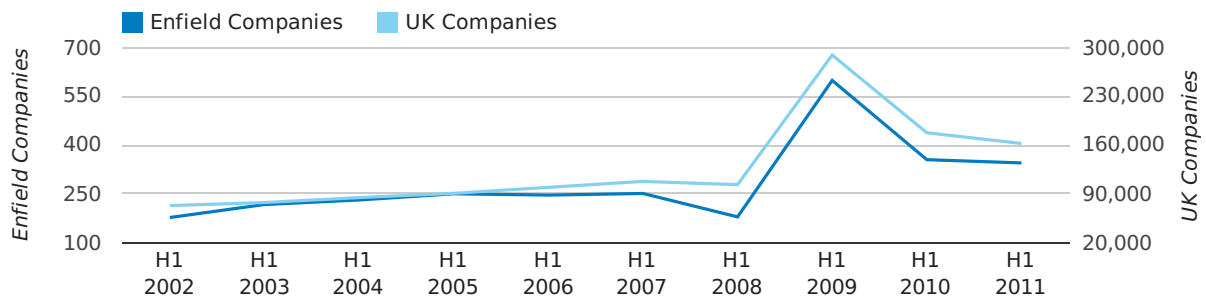
### Half Year Data (Jan-Jun 2011)

In the first half of 2011 a total of 345 companies were dissolved in Enfield. This figure is 2.8% lower than last year, which compares badly to the UK wide change of -8.6%.

The highest total for a first half year in Enfield occurred in 2009 when a total of 599 were closed.

HALF YEAR (JAN-JUN)	ENFIELD	UK
2011	345	162,310
2010	355	177,631
% CHANGE	-2.8%	-8.6%
RECORD YEAR	2009 (599)	2009 (289,236)

### dissolved companies by half year



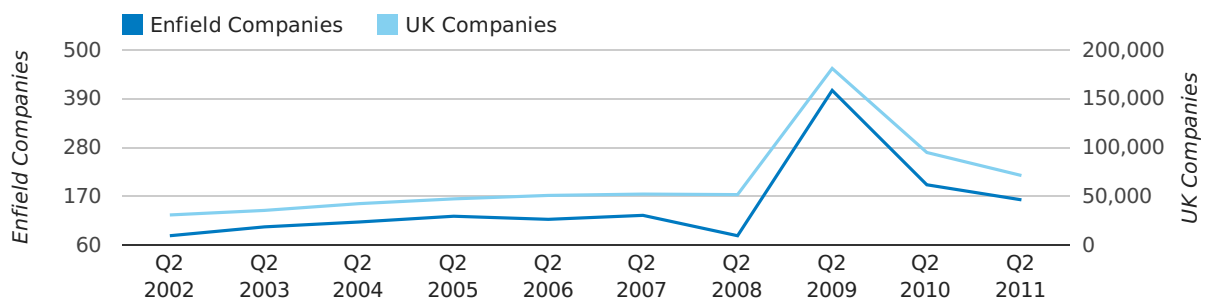
### Quarterly Data (Q2 Apr-Jun 2011)

A total of 162 companies were dissolved in Enfield during the second quarter of 2011 (Apr 2011 - Jun 2011).

This figure is a decrease of 17.3% versus the same period last year (Q2 2010). This figure compares poorly to the UK as a whole, which saw a decrease of 24.9% against the same period last year.

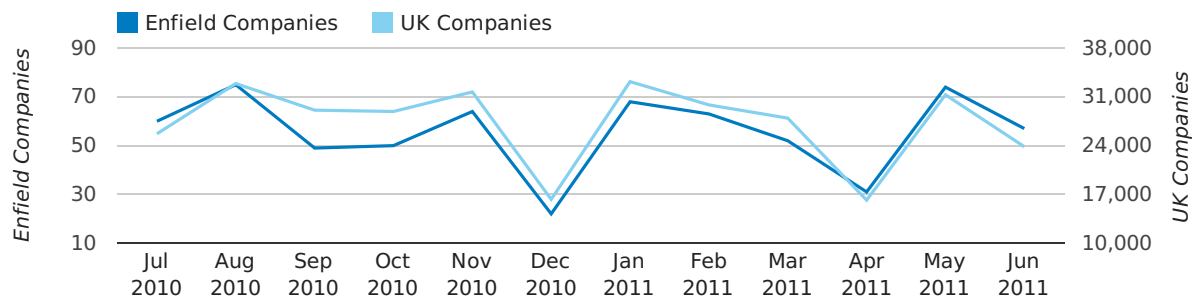
SECOND QUARTER (APR 2011 - JUN 2011)	ENFIELD	UK
2011	162	71,324
2010	196	94,954
% CHANGE	-17.3%	-24.9%
RECORD YEAR	2009 (409)	2009 (181,176)

### dissolved companies by quarter



# Monthly Data (Apr, May & Jun 2011)

## dissolved companies by month



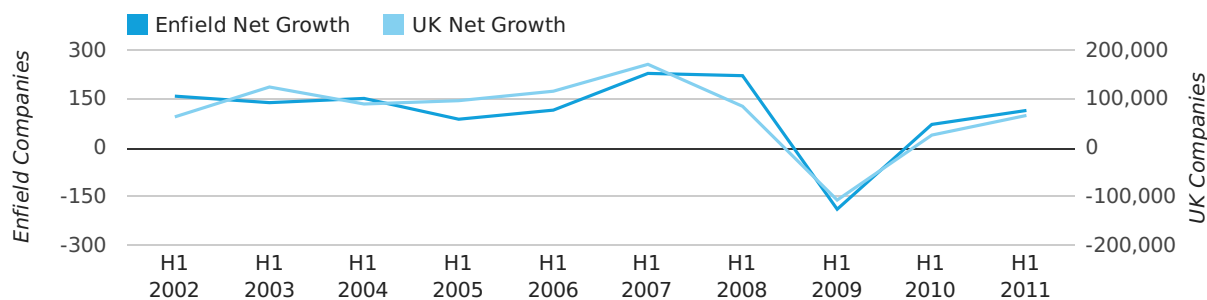
	APRIL	MAY	JUNE
CLOSED COMPANIES IN 2011	31	74	57
CLOSED COMPANIES IN 2010	57	75	64
% CHANGE	-45.6%	-1.3%	-11%
RECORD YEAR	2009 (141)	2009 (160)	2009 (108)

### Half Year Data (Jan-Jun 2011)

In the first half of 2011 the company register for Enfield increased by 115 companies. This figure is 59.7% higher than last year, which compares badly to a UK increase of 154.3%.

HALF YEAR (JAN-JUN)	ENFIELD	UK
2011	115	66,425
2010	72	26,118
% CHANGE	59.7%	154.3%
RECORD YEAR	2007 (229)	2007 (171,296)

### net growth by half year



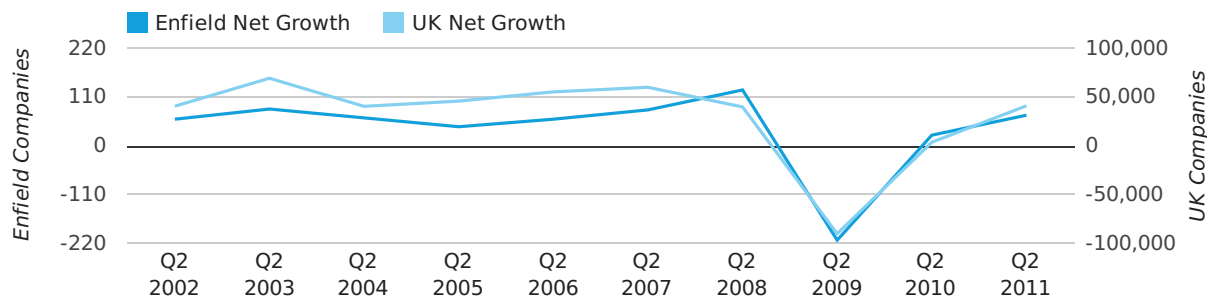
### Quarterly Data (Q2 Apr-Jun 2011)

Net company growth for Enfield during the second quarter of 2011 (Apr 2011 - Jun 2011) was 69 companies.

This represents an increase of 187.5% on the same period last year.

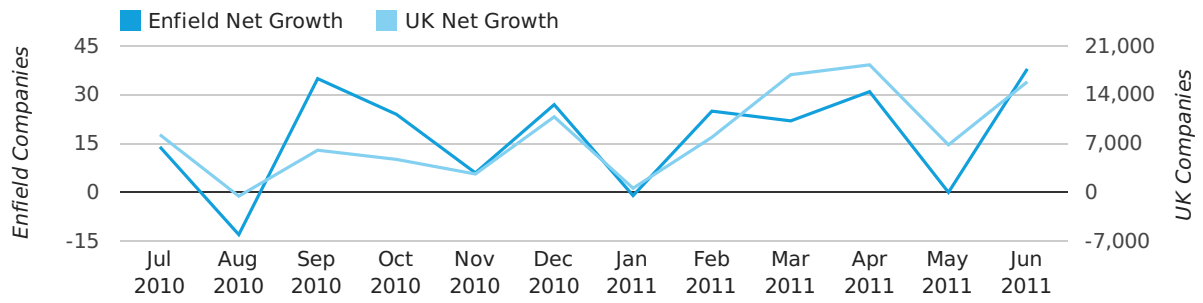
SECOND QUARTER (APR 2011 - JUN 2011)	ENFIELD	UK
2011	69	41,020
2010	24	3,658
% CHANGE	187.5%	1,021.4%
RECORD YEAR	2008 (126)	2003 (69,274)

### net growth by quarter



# Monthly Data (Apr, May & Jun 2011)

## net growth by month



	APRIL	MAY	JUNE
NET GROWTH IN 2011	31	0	38
NET GROWTH IN 2010	14	-5	15
% CHANGE	121.4%	-100.0%	153.3%
RECORD YEAR	1997 (47)	2000 (37)	2008 (50)

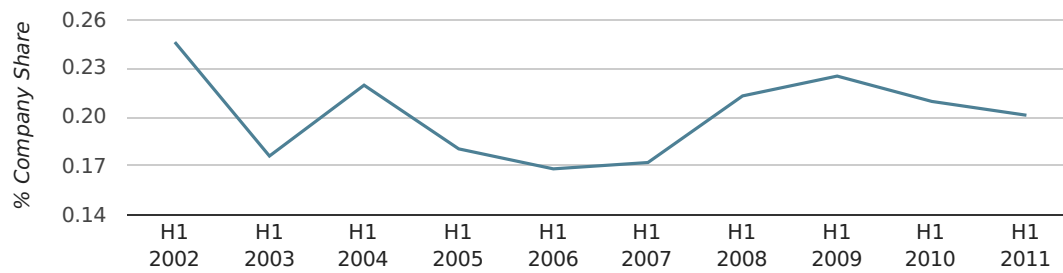


### Half Year Data (Jan-Jun 2011)

In the first half of 2011 Enfield formed 0.2% of all UK companies. This is the same as the 2010 figure of 0.2%.

HALF YEAR (JAN-JUN)	ENFIELD
2011	0.2%
2010	0.2%
2009	0.2%
2008	0.2%
2007	0.2%
RECORD YEAR (SINCE 1960)	1962 (0.4%)

#### company share by half year

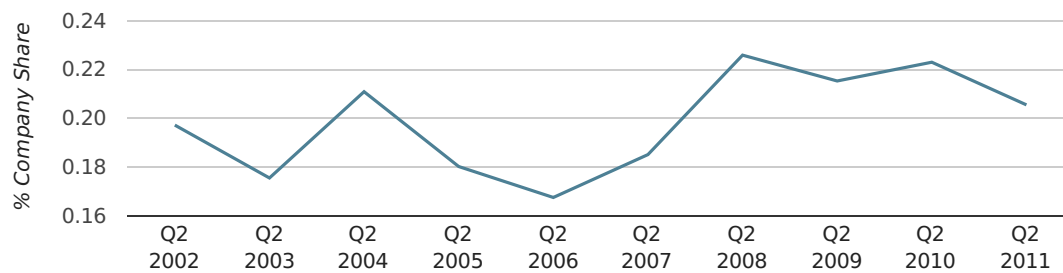


### Quarterly Data (Q2 Apr-Jun 2011)

In the second quarter of 2011, Enfield formed 0.2% of all UK companies.

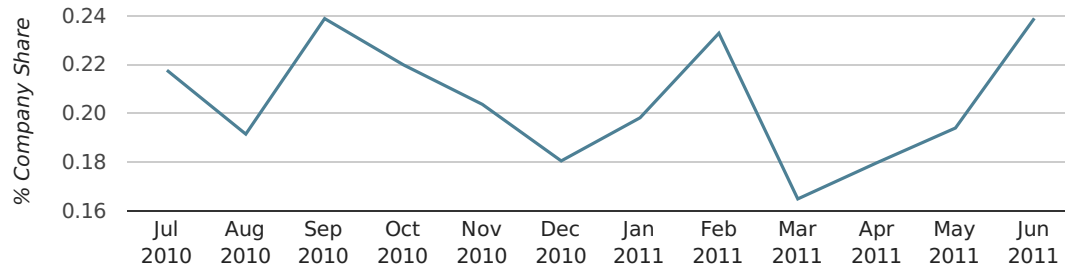
SECOND QUARTER (APR 2011 - JUN 2011)	ENFIELD
2011	0.2%
2010	0.2%
2009	0.2%
2008	0.2%
2007	0.2%
RECORD YEAR (SINCE 1960)	1962 (0.5%)

#### company share by quarter



# Monthly Data (Apr, May & Jun 2011)

## company share by month



	APRIL	MAY	JUNE
UK FORMATION SHARE IN 2011	0.2%	0.2%	0.2%
UK FORMATION SHARE IN 2010	0.2%	0.2%	0.2%
% CHANGE	-15.5%	-16.7%	6.6%
RECORD YEAR	1962 (0.9%)	1967 (0.6%)	1962 (0.6%)

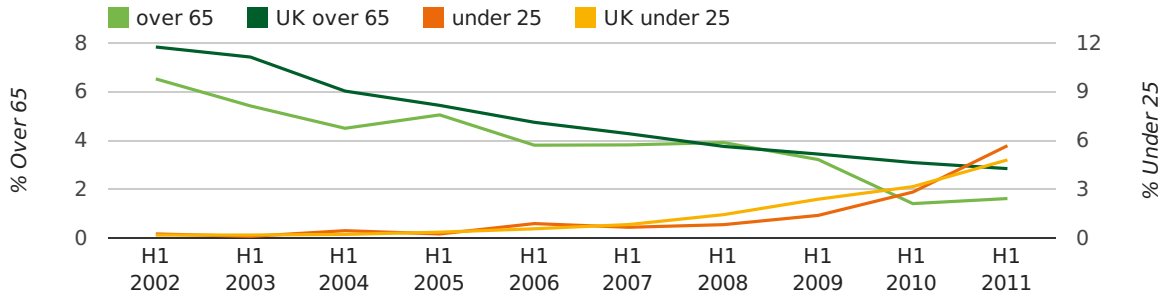
### Half Year Data (Jan-Jun 2011)

The average age of a director in the first half of 2011 was 40.9.

The percentage of directors under the age of 25 was 5.7% compared to the UK figure of 3.2%.

The percentage of directors over the age of 65 was 1.6% compared to the UK figure of 4.3%.

#### director age by half year



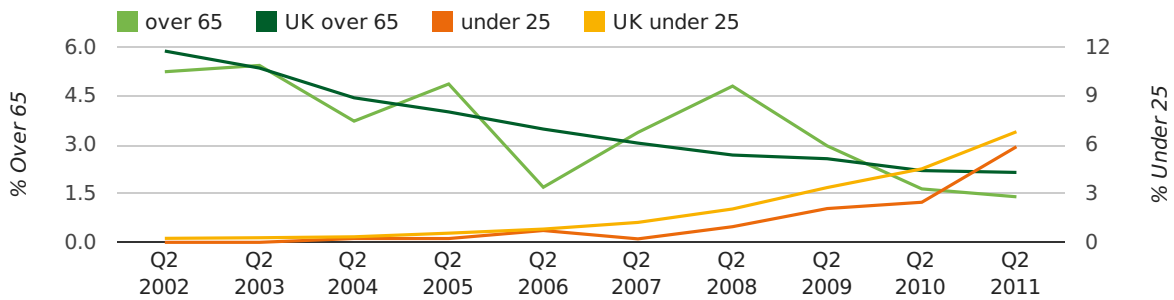
### Quarterly Data (Q2 Apr-Jun 2011)

The average age of a director in the second quarter of 2011 was 40.9.

The percentage of directors under the age of 25 was 5.9% compared to the UK figure of 3.4%.

The percentage of directors over the age of 65 was 1.4% compared to the UK figure of 4.3%.

#### director age by quarter

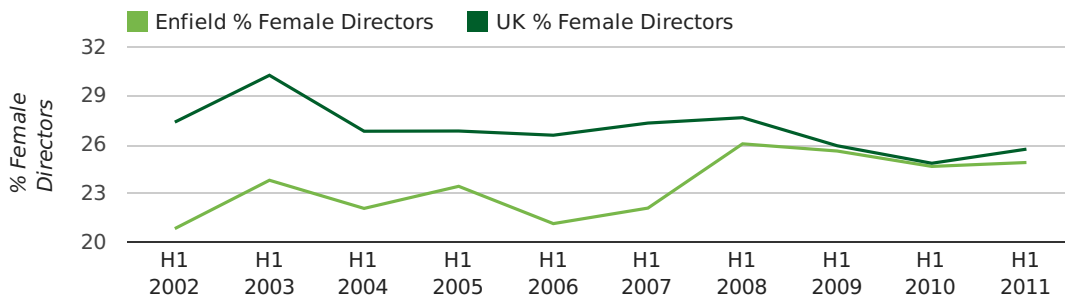


### Half Year Data (Jan-Jun 2011)

The record first half year for female directors in Enfield was 1861 when 40.0% of all directors were female.

24.9% of all director appointments in Enfield in the first half of 2011 were female. This compares to a UK average of 25.7% for the same period.

#### director gender by half year

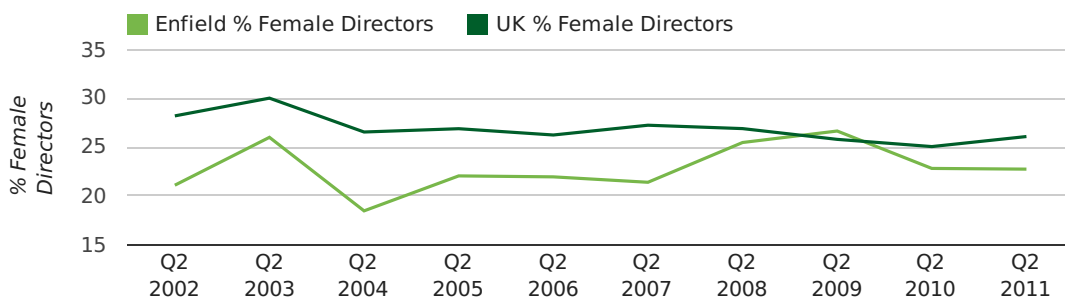


### Quarterly Data (Q2 Apr-Jun 2011)

The record second quarter for female directors in Enfield was in 1866 when 66.7% of all directors were female.

22.7% of all director appointments in Enfield in the second quarter of 2011 were female. This compares to a UK average of 26.1% for the same period.

#### director gender by quarter



Previous 12 months (Jun 2010-Jun 2011)

Excluding: LIMITED, LTD, &, UK, SERVICES, THE, (UK), AND, LTD., A, LLP, SOLUTIONS, COMPANY, OF.

WORD	PERCENTAGE	UK WORD	UK PERCENTAGE
MANAGEMENT	1.65%	CONSULTING	5.09%
LONDON	1.51%	MANAGEMENT	4.86%
PROPERTY	1.00%	CONSULTANCY	3.17%
CARE	0.86%	PROPERTY	2.43%
ENFIELD	0.79%	TRADING	2.05%
CONSULTING	0.72%	DESIGN	1.94%
DESIGN	0.72%	ASSOCIATES	1.92%
CONSULTANCY	0.72%	BUSINESS	1.87%
INTERNATIONAL	0.65%	CONSTRUCTION	1.77%
CONSULTANTS	0.65%	CONSULTANTS	1.76%
ASSOCIATES	0.65%	MEDIA	1.73%
M	0.65%	ENGINEERING	1.67%
CAR	0.57%	LONDON	1.60%
TRADING	0.50%	GLOBAL	1.46%
SECURITY	0.43%	J	1.44%
P	0.43%	CARE	1.44%
CONSTRUCTION	0.43%	INVESTMENTS	1.42%
MY	0.43%	IT	1.39%
BUSINESS	0.43%	BUILDING	1.32%
HOME	0.43%	PROPERTIES	1.31%
INVESTMENTS	0.43%	ELECTRICAL	1.30%
GLOBAL	0.43%	M	1.27%
SYSTEMS	0.43%	S	1.23%
CO	0.36%	ENTERPRISES	1.20%
INVESTMENT	0.36%	SYSTEMS	1.20%

## Previous 36 months, excluding companies less than 12 months old

SIC CODE	NUMBER OF COMPANIES	UK COMPANIES
None Supplied	546	202,072
7487 - Other business activities	99	60,758
9999 - Dormant Company	59	20,111
82990 - Other business support service activities not elsewhere classified	31	30,647
9305 - Other service activities	30	9,063
99999 - Dormant Company	30	18,918
96090 - Other service activities not elsewhere classified	25	10,322
62020 - Information technology consultancy activities	25	10,545
7499 - Non-trading company	23	10,955
7414 - Business & management consultancy	23	13,053
4521 - General construction & civil engineering	21	5,928
70229 - Management consultancy activities other than financial management	17	16,419
74990 - Non-trading company	17	8,481
7260 - Other computer related activities	17	7,849
62090 - Other information technology service activities	16	7,095
74909 - Other professional, scientific and technical activities not elsewhere classified	13	7,835
5530 - Restaurants	12	5,086
7222 - Other software consultancy and supply	11	7,143
68320 - Management of real estate on a fee or contract basis	10	3,095
5010 - Sale of motor vehicles	9	1,021