

Fareham

2011 half year business confidence report



contents

new company registrations

closed companies (dissolved)

net company growth

uk company share

director age

director gender

naming trends

sic data

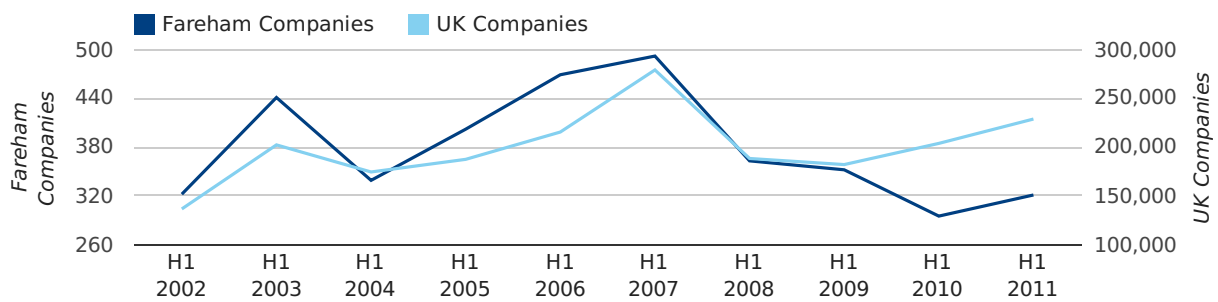
Half Year Data (Jan-Jun 2011)

In the first half of 2011 a total of 321 companies were formed in Fareham. This figure is 8.8% higher than last year, which compares badly to the UK wide figure of 12.3%.

The highest total for a first half year in Fareham occurred in 2007 when a total of 492 were formed.

HALF YEAR (JAN-JUN)	FAREHAM	UK
2011	321	228,735
2010	295	203,749
% CHANGE	8.8%	12.3%
RECORD YEAR	2007 (492)	2007 (279,097)

new companies by half year



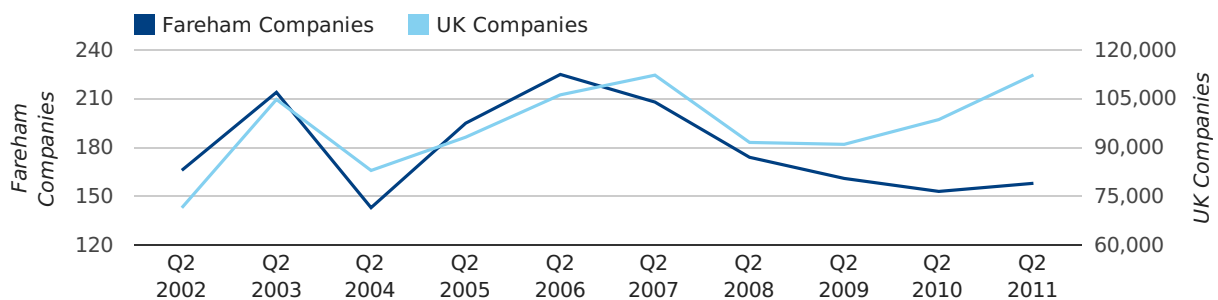
Quarterly Data (Q2 Apr-Jun 2011)

A total of 158 companies were registered in Fareham during the second quarter of 2011 (Apr 2011 - Jun 2011).

This figure is an increase of 3.3% versus the same period last year (Q2 2010). This figure compares badly to the UK as a whole, which saw an increase of 13.9% against the same period last year.

SECOND QUARTER (APR 2011 - JUN 2011)	FAREHAM	UK
2011	158	112,344
2010	153	98,612
% CHANGE	3.3%	13.9%
RECORD YEAR	2006 (225)	2011 (112,344)

new companies by quarter



Monthly Data (Apr, May & Jun 2011)

new companies by month



	APRIL	MAY	JUNE
NEW COMPANIES IN 2011	53	50	55
NEW COMPANIES IN 2010	54	47	52
% CHANGE	-1.9%	6.4%	5.8%
RECORD YEAR	2006 (97)	2006 (73)	2003 (74)

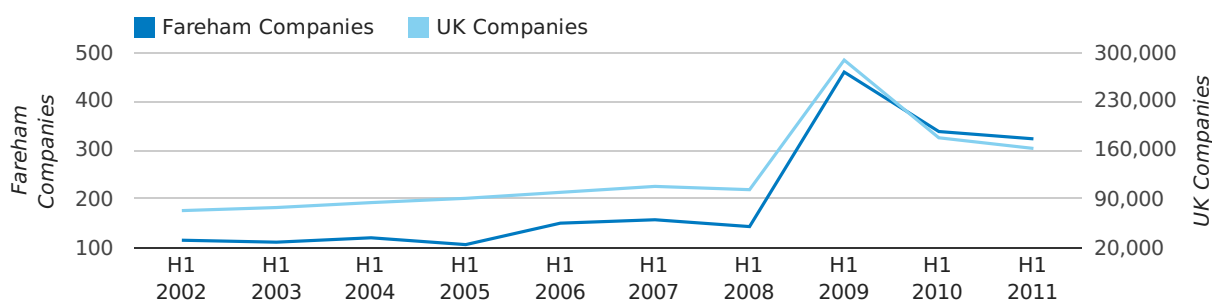
Half Year Data (Jan-Jun 2011)

In the first half of 2011 a total of 323 companies were dissolved in Fareham. This figure is 4.4% lower than last year, which compares badly to the UK wide change of -8.6%.

The highest total for a first half year in Fareham occurred in 2009 when a total of 460 were closed.

HALF YEAR (JAN-JUN)	FAREHAM	UK
2011	323	162,310
2010	338	177,631
% CHANGE	-4.4%	-8.6%
RECORD YEAR	2009 (460)	2009 (289,236)

dissolved companies by half year



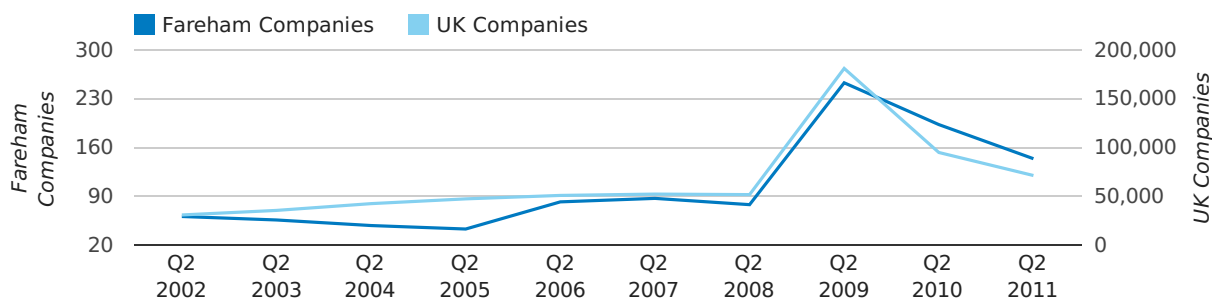
Quarterly Data (Q2 Apr-Jun 2011)

A total of 144 companies were dissolved in Fareham during the second quarter of 2011 (Apr 2011 - Jun 2011).

This figure is a decrease of 25.4% versus the same period last year (Q2 2010). This figure compares well to the UK as a whole, which saw a decrease of 24.9% against the same period last year.

SECOND QUARTER (APR 2011 - JUN 2011)	FAREHAM	UK
2011	144	71,324
2010	193	94,954
% CHANGE	-25.4%	-24.9%
RECORD YEAR	2009 (253)	2009 (181,176)

dissolved companies by quarter



Monthly Data (Apr, May & Jun 2011)

dissolved companies by month



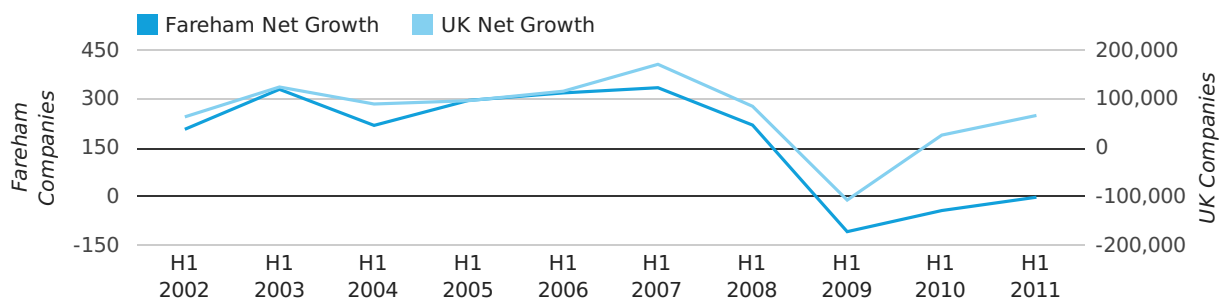
	APRIL	MAY	JUNE
CLOSED COMPANIES IN 2011	40	59	45
CLOSED COMPANIES IN 2010	61	74	58
% CHANGE	-34.4%	-20.3%	-22%
RECORD YEAR	2010 (61)	2009 (113)	2009 (80)

Half Year Data (Jan-Jun 2011)

In the first half of 2011 the company register for Fareham decreased by 2 companies. This figure is 95.3% lower than last year, which compares badly to a UK increase of 154.3%.

HALF YEAR (JAN-JUN)	FAREHAM	UK
2011	-2	66,425
2010	-43	26,118
% CHANGE	-95.3%	154.3%
RECORD YEAR	2007 (335)	2007 (171,296)

net growth by half year



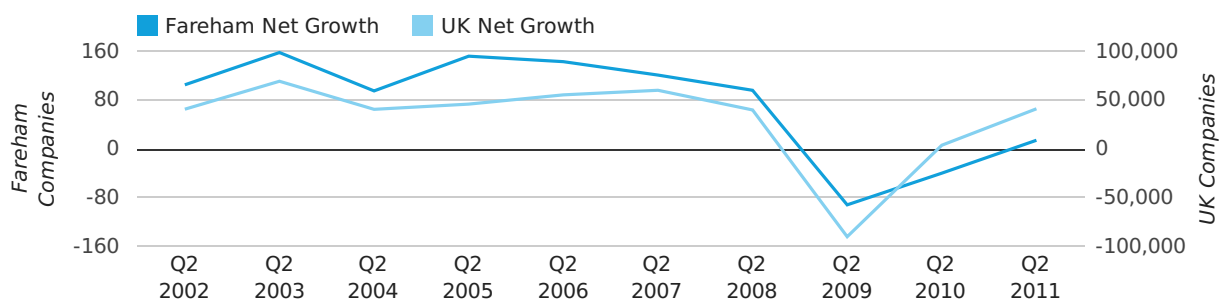
Quarterly Data (Q2 Apr-Jun 2011)

Net company growth for Fareham during the second quarter of 2011 (Apr 2011 - Jun 2011) was 14 companies.

This represents an increase of 135.0% on the same period last year.

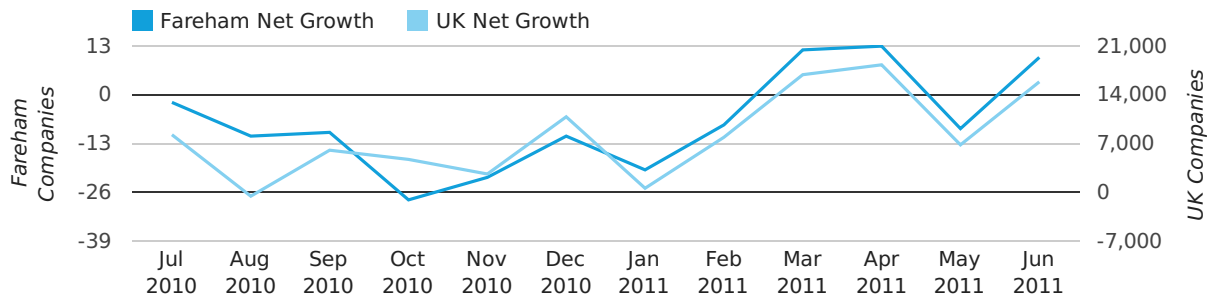
SECOND QUARTER (APR 2011 - JUN 2011)	FAREHAM	UK
2011	14	41,020
2010	-40	3,658
% CHANGE	-135.0%	1,021.4%
RECORD YEAR	2003 (158)	2003 (69,274)

net growth by quarter



Monthly Data (Apr, May & Jun 2011)

net growth by month



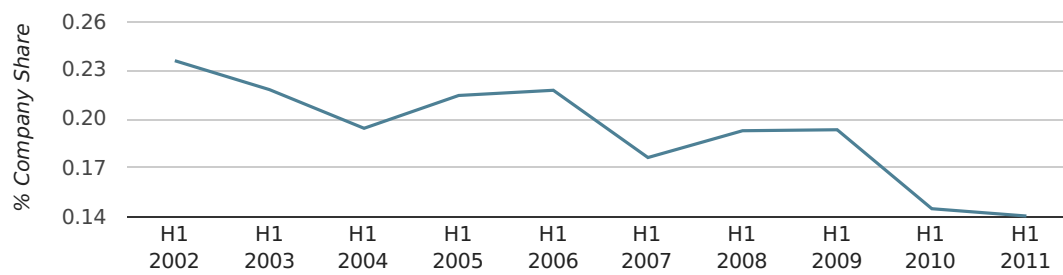
	APRIL	MAY	JUNE
NET GROWTH IN 2011	13	-9	10
NET GROWTH IN 2010	-7	-27	-6
% CHANGE	-285.7%	-66.7%	-266.7%
RECORD YEAR	2006 (72)	2003 (57)	2008 (66)

Half Year Data (Jan-Jun 2011)

In the first half of 2011 Fareham formed 0.1% of all UK companies. This is the same as the 2010 figure of 0.1%.

HALF YEAR (JAN-JUN)	FAREHAM
2011	0.1%
2010	0.1%
2009	0.2%
2008	0.2%
2007	0.2%
RECORD YEAR (SINCE 1960)	1963 (0.3%)

company share by half year

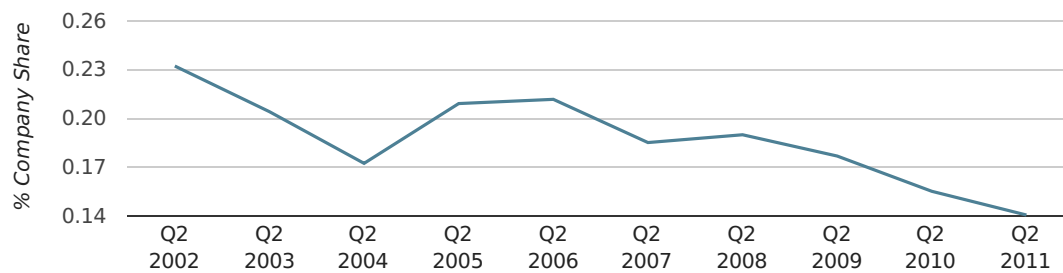


Quarterly Data (Q2 Apr-Jun 2011)

In the second quarter of 2011, Fareham formed 0.1% of all UK companies.

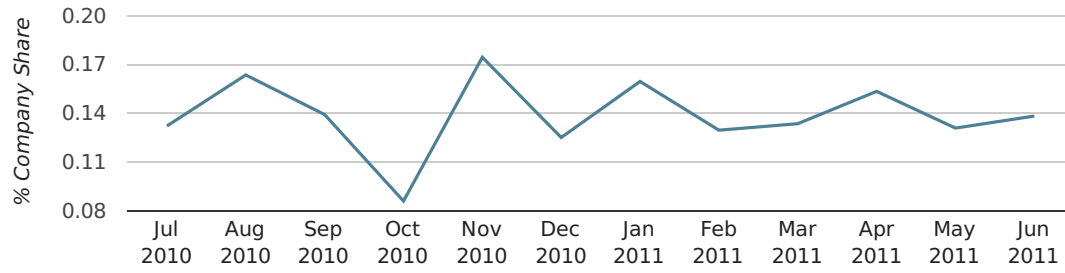
SECOND QUARTER (APR 2011 - JUN 2011)	FAREHAM
2011	0.1%
2010	0.2%
2009	0.2%
2008	0.2%
2007	0.2%
RECORD YEAR (SINCE 1960)	1963 (0.4%)

company share by quarter



Monthly Data (Apr, May & Jun 2011)

company share by month



	APRIL	MAY	JUNE
UK FORMATION SHARE IN 2011	0.2%	0.1%	0.1%
UK FORMATION SHARE IN 2010	0.2%	0.2%	0.1%
% CHANGE	-5.0%	-16.2%	-6.2%
RECORD YEAR	1980 (0.4%)	1961 (0.8%)	1963 (0.9%)

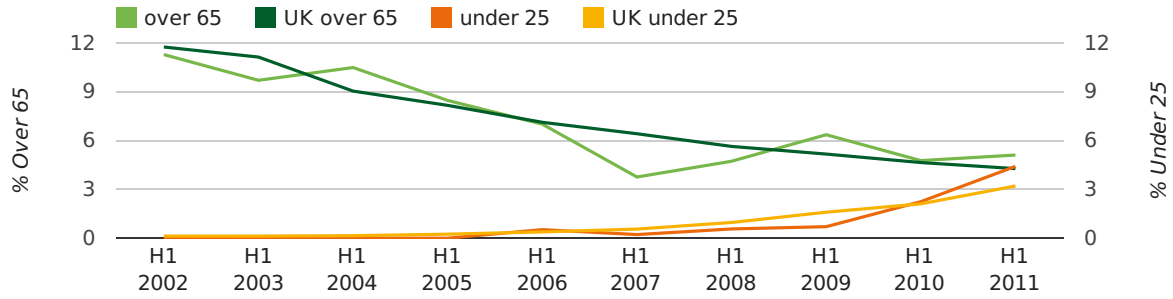
Half Year Data (Jan-Jun 2011)

The average age of a director in the first half of 2011 was 45.8.

The percentage of directors under the age of 25 was 4.4% compared to the UK figure of 3.2%.

The percentage of directors over the age of 65 was 5.1% compared to the UK figure of 4.3%.

director age by half year



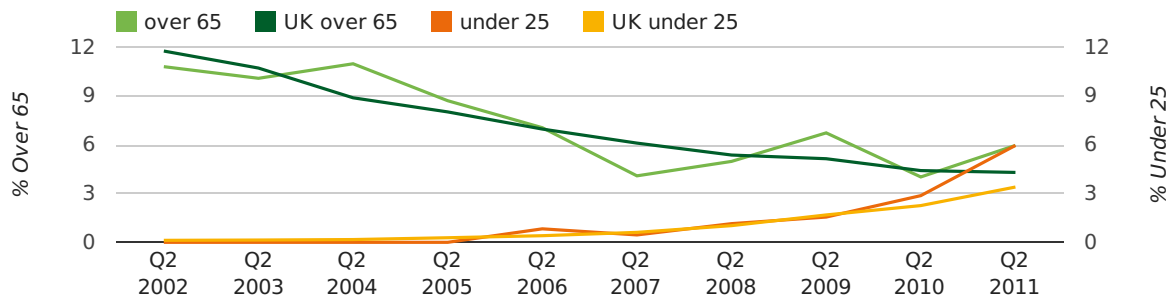
Quarterly Data (Q2 Apr-Jun 2011)

The average age of a director in the second quarter of 2011 was 46.4.

The percentage of directors under the age of 25 was 6.0% compared to the UK figure of 3.4%.

The percentage of directors over the age of 65 was 6.0% compared to the UK figure of 4.3%.

director age by quarter

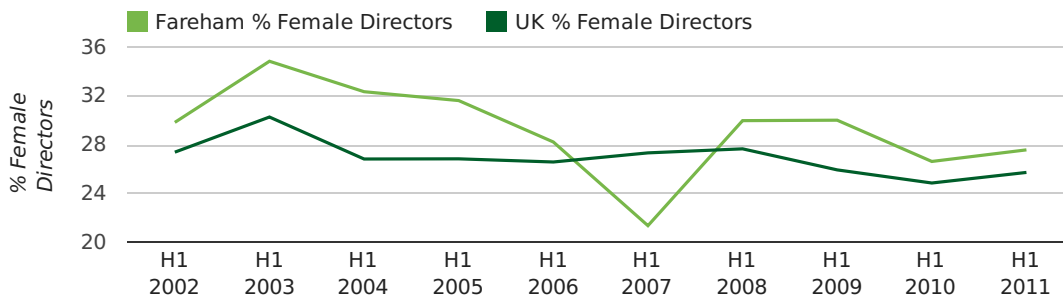


Half Year Data (Jan-Jun 2011)

The record first half year for female directors in Fareham was 1861 when 40.0% of all directors were female.

27.6% of all director appointments in Fareham in the first half of 2011 were female. This compares to a UK average of 25.7% for the same period.

director gender by half year

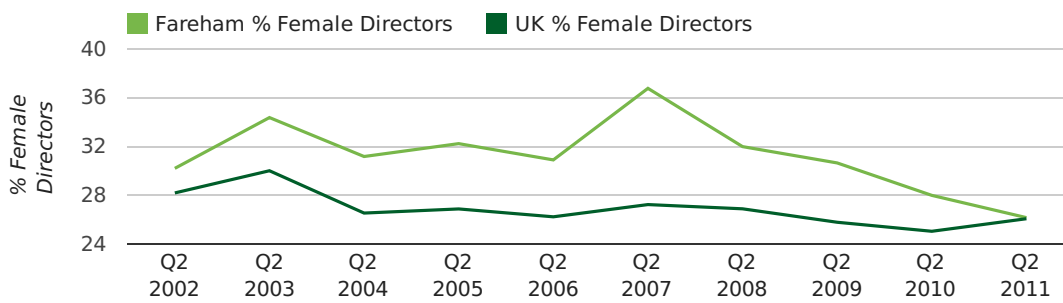


Quarterly Data (Q2 Apr-Jun 2011)

The record second quarter for female directors in Fareham was in 1866 when 66.7% of all directors were female.

26.2% of all director appointments in Fareham in the second quarter of 2011 were female. This compares to a UK average of 26.1% for the same period.

director gender by quarter



Previous 12 months (Jun 2010-Jun 2011)

Excluding: LIMITED, LTD, &, UK, SERVICES, THE, (UK), AND, LTD., A, LLP, SOLUTIONS, COMPANY, OF.

WORD	PERCENTAGE	UK WORD	UK PERCENTAGE
MANAGEMENT	2.85%	CONSULTING	5.09%
CONSULTING	1.48%	MANAGEMENT	4.86%
SPECSAVERS	1.18%	CONSULTANCY	3.17%
CONSULTANCY	1.08%	PROPERTY	2.43%
TECHNICAL	0.98%	TRADING	2.05%
ENGINEERING	0.89%	DESIGN	1.94%
SYSTEMS	0.89%	ASSOCIATES	1.92%
FAREHAM	0.79%	BUSINESS	1.87%
FINANCIAL	0.79%	CONSTRUCTION	1.77%
ASSOCIATES	0.79%	CONSULTANTS	1.76%
GAS	0.69%	MEDIA	1.73%
BUSINESS	0.69%	ENGINEERING	1.67%
PLC	0.69%	LONDON	1.60%
TRAINING	0.69%	GLOBAL	1.46%
GLOBAL	0.69%	J	1.44%
SOUTH	0.69%	CARE	1.44%
ELECTRICAL	0.69%	INVESTMENTS	1.42%
DESIGN	0.59%	IT	1.39%
CARE	0.59%	BUILDING	1.32%
SCHOOL	0.59%	PROPERTIES	1.31%
CORPORATION	0.59%	ELECTRICAL	1.30%
PROPERTY	0.59%	M	1.27%
RECRUITMENT	0.59%	S	1.23%
EUROPE	0.49%	ENTERPRISES	1.20%
HOMES	0.49%	SYSTEMS	1.20%

Previous 36 months, excluding companies less than 12 months old

SIC CODE	NUMBER OF COMPANIES	UK COMPANIES
None Supplied	236	202,072
7487 - Other business activities	72	60,758
47789 - Other retail sale of new goods in specialised stores (not commercial art galleries and opticians)	50	1,018
7499 - Non-trading company	49	10,955
74990 - Non-trading company	46	8,481
9999 - Dormant Company	38	20,111
5248 - Other retail specialised stores	36	2,037
82990 - Other business support service activities not elsewhere classified	35	30,647
70229 - Management consultancy activities other than financial management	33	16,419
99999 - Dormant Company	32	18,918
62020 - Information technology consultancy activities	28	10,545
98000 - Residents property management	23	2,888
4521 - General construction & civil engineering	18	5,928
62090 - Other information technology service activities	17	7,095
96090 - Other service activities not elsewhere classified	14	10,322
7414 - Business & management consultancy	13	13,053
7222 - Other software consultancy and supply	12	7,143
43320 - Joinery installation	9	1,125
41100 - Development of building projects	9	3,852
74909 - Other professional, scientific and technical activities not elsewhere classified	9	7,835