

Fareham

q3 2011 business confidence report



headlines

- July 2011 saw a new record in company closures in Fareham when compared to any previous July.

contents

new company registrations

closed companies (dissolved)

net company growth

uk company share

director age

director gender

naming trends

sic data

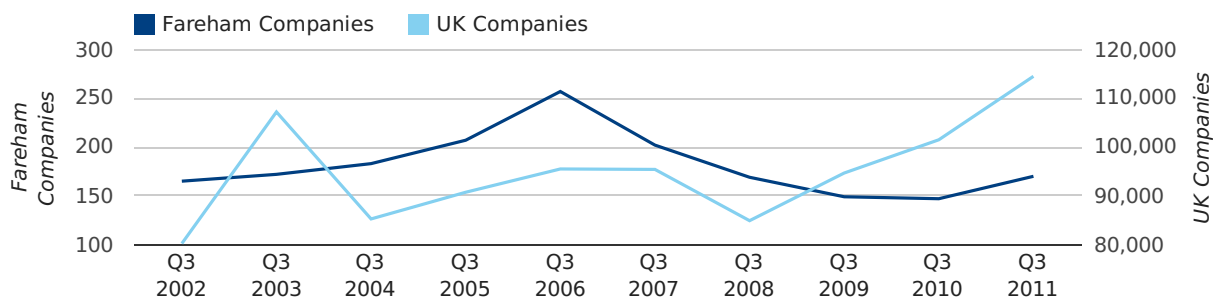
Quarterly Data (Q3 Jul-Sep 2011)

A total of 170 companies were registered in Fareham during the third quarter of 2011 (Jul 2011 - Sep 2011).

This figure is an increase of 15.6% versus the same period last year (Q3 2010). This figure compares well to the UK as a whole, which saw an increase of 12.8% against the same period last year.

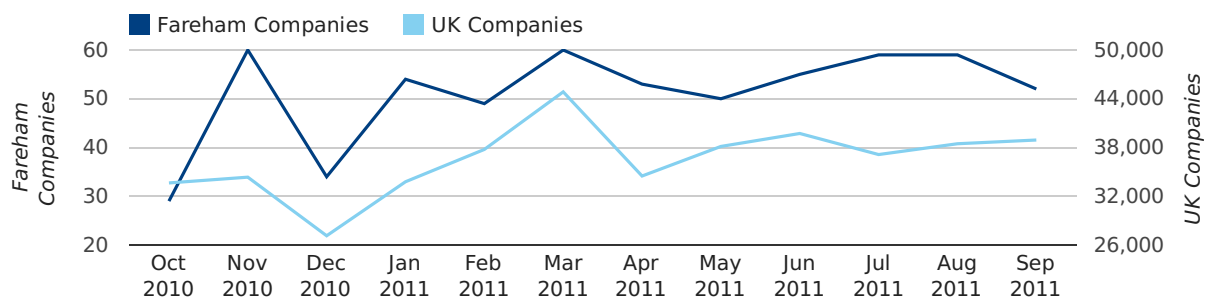
THIRD QUARTER (JUL 2011 - SEP 2011)	FAREHAM	UK
2011	170	114,512
2010	147	101,492
% CHANGE	15.6%	12.8%
RECORD YEAR	2006 (257)	2011 (114,512)

new companies by quarter



Monthly Data (Jul, Aug & Sep 2011)

new companies by month



	JULY	AUGUST	SEPTEMBER
NEW COMPANIES IN 2011	59	59	52
NEW COMPANIES IN 2010	45	53	49
% CHANGE	31.1%	11.3%	6.1%
RECORD YEAR	2006 (91)	2006 (76)	2006 (90)

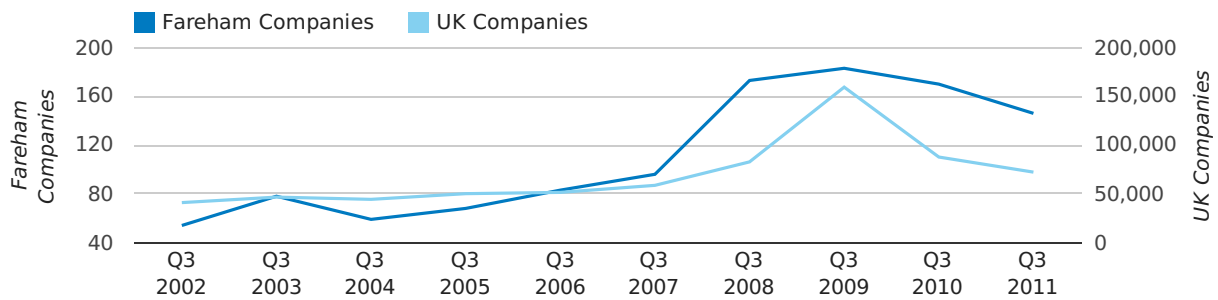
Quarterly Data (Q3 Jul-Sep 2011)

A total of 146 companies were dissolved in Fareham during the third quarter of 2011 (Jul 2011 - Sep 2011).

This figure is a decrease of 14.1% versus the same period last year (Q3 2010). This figure compares poorly to the UK as a whole, which saw a decrease of 17.6% against the same period last year.

THIRD QUARTER (JUL 2011 - SEP 2011)	FAREHAM	UK
2011	146	72,230
2010	170	87,705
% CHANGE	-14.1%	-17.6%
RECORD YEAR	2009 (183)	2009 (159,401)

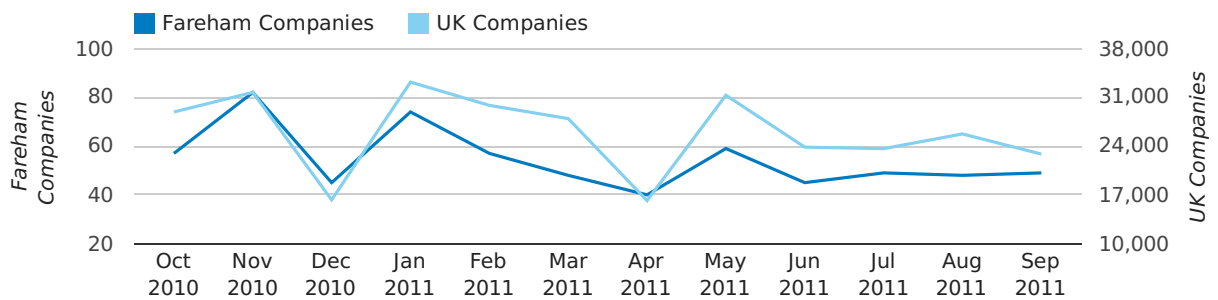
dissolved companies by quarter



Monthly Data (Jul, Aug & Sep 2011)

July 2011 saw a new record in company closures in Fareham when compared to any previous July.

dissolved companies by month



	JULY	AUGUST	SEPTEMBER
CLOSED COMPANIES IN 2011	49	48	49
CLOSED COMPANIES IN 2010	47	64	59
% CHANGE	4.3%	-25.0%	-17%
RECORD YEAR	2011 (49)	2008 (140)	2009 (85)

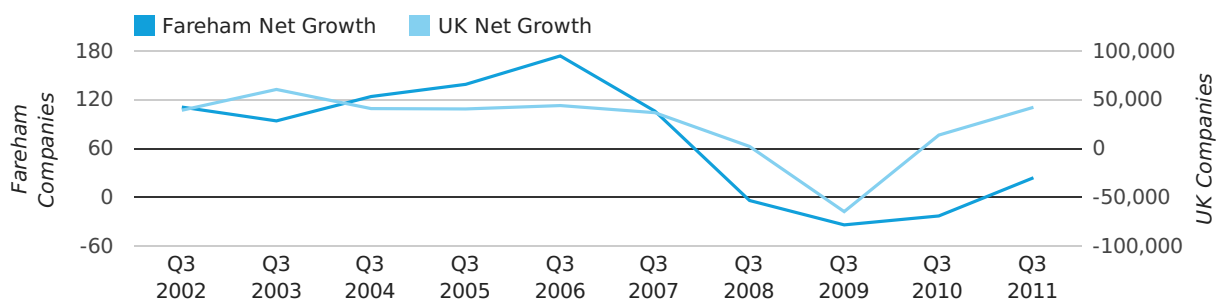
Quarterly Data (Q3 Jul-Sep 2011)

Net company growth for Fareham during the third quarter of 2011 (Jul 2011 - Sep 2011) was 24 companies.

This represents an increase of 204.3% on the same period last year.

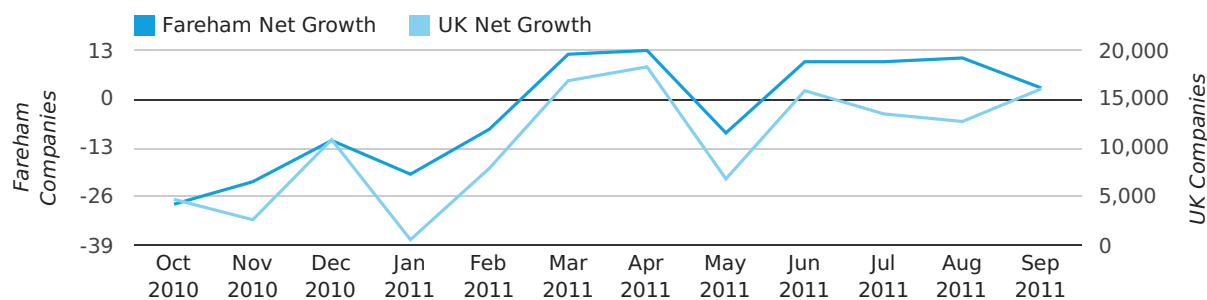
THIRD QUARTER (JUL 2011 - SEP 2011)	FAREHAM	UK
2011	24	42,282
2010	-23	13,787
% CHANGE	-204.3%	206.7%
RECORD YEAR	2006 (174)	2003 (60,597)

net growth by quarter



Monthly Data (Jul, Aug & Sep 2011)

net growth by month



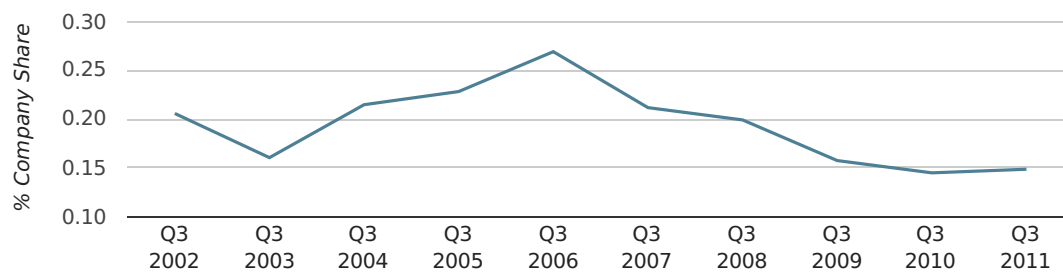
	JULY	AUGUST	SEPTEMBER
NET GROWTH IN 2011	10	11	3
NET GROWTH IN 2010	-2	-11	-10
% CHANGE	-600.0%	-200.0%	-130.0%
RECORD YEAR	2006 (66)	2005 (58)	2006 (69)

Quarterly Data (Q3 Jul-Sep 2011)

In the third quarter of 2011, Fareham formed 0.1% of all UK companies.

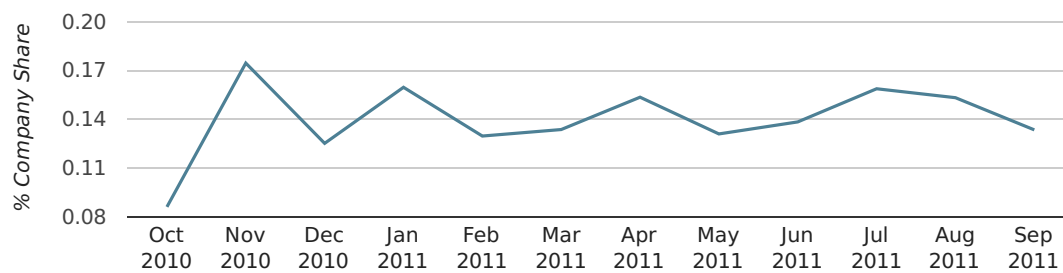
THIRD QUARTER (JUL 2011 - SEP 2011)	FAREHAM
2011	0.1%
2010	0.1%
2009	0.2%
2008	0.2%
2007	0.2%
RECORD YEAR (SINCE 1960)	1967 (0.4%)

company share by quarter



Monthly Data (Jul, Aug & Sep 2011)

company share by month



	JULY	AUGUST	SEPTEMBER
UK FORMATION SHARE IN 2011	0.2%	0.2%	0.1%
UK FORMATION SHARE IN 2010	0.1%	0.2%	0.1%
% CHANGE	20.0%	-6.3%	-4.2%
RECORD YEAR	1967 (0.9%)	1983 (0.5%)	1977 (0.5%)

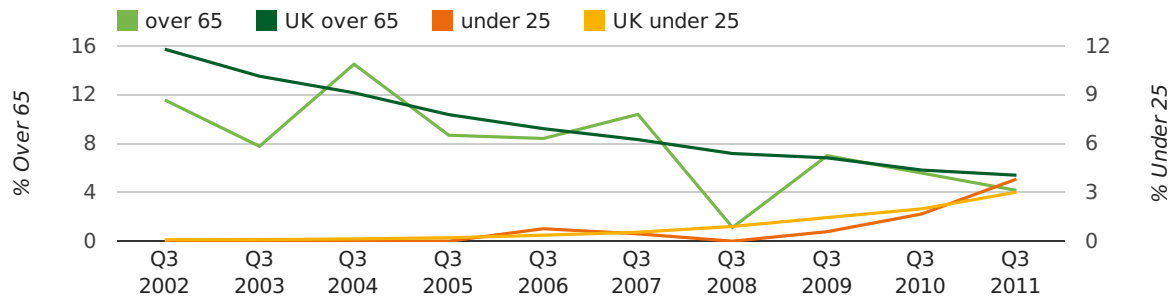
Quarterly Data (Q3 Jul-Sep 2011)

The average age of a director in the third quarter of 2011 was 44.9.

The percentage of directors under the age of 25 was 3.8% compared to the UK figure of 4.0%.

The percentage of directors over the age of 65 was 4.2% compared to the UK figure of 4.1%.

director age by quarter

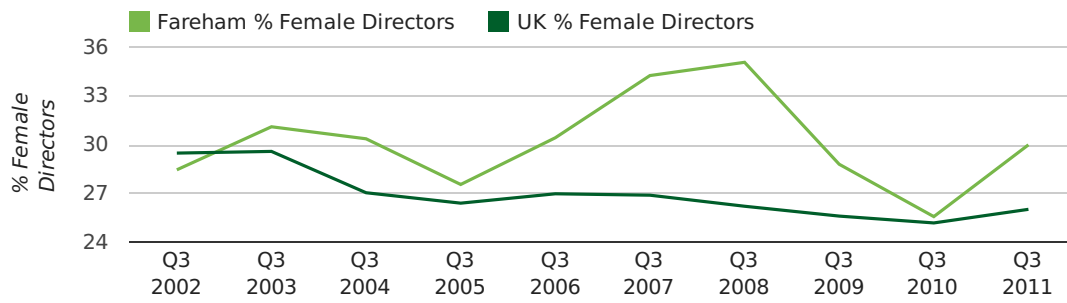


Quarterly Data (Q3 Jul-Sep 2011)

The record third quarter for female directors in Fareham was in 1862 when 50.0% of all directors were female.

30.0% of all director appointments in Fareham in the third quarter of 2011 were female. This compares to a UK average of 26.0% for the same period.

director gender by quarter



Previous 12 months (Sep 2010-Sep 2011)

Excluding: LIMITED, LTD, &, UK, SERVICES, THE, (UK), AND, LTD., A, LLP, SOLUTIONS, COMPANY, OF.

WORD	PERCENTAGE	UK WORD	UK PERCENTAGE
MANAGEMENT	2.63%	CONSULTING	5.11%
CONSULTING	1.36%	MANAGEMENT	4.75%
SPECSAVERS	1.27%	CONSULTANCY	3.19%
GLOBAL	0.88%	PROPERTY	2.41%
ENGINEERING	0.88%	TRADING	2.06%
RECRUITMENT	0.88%	DESIGN	1.94%
TECHNICAL	0.78%	ASSOCIATES	1.85%
CONSULTANCY	0.78%	BUSINESS	1.82%
SYSTEMS	0.78%	CONSULTANTS	1.76%
SCHOOL	0.68%	ENGINEERING	1.74%
GAS	0.68%	MEDIA	1.72%
FAREHAM	0.68%	CONSTRUCTION	1.72%
DESIGN	0.68%	LONDON	1.63%
ELECTRICAL	0.68%	J	1.47%
ASSOCIATES	0.68%	GLOBAL	1.46%
M	0.58%	INVESTMENTS	1.43%
CONSTRUCTION	0.58%	CARE	1.42%
TRADING	0.58%	IT	1.38%
NETWORK	0.58%	BUILDING	1.30%
BUSINESS	0.58%	PROPERTIES	1.28%
SOUTH	0.58%	ELECTRICAL	1.27%
PLC	0.58%	M	1.25%
CORPORATION	0.58%	ENERGY	1.22%
PROPERTY	0.58%	TRAINING	1.21%
PROJECTS	0.49%	S	1.21%

Previous 36 months, excluding companies less than 12 months old

SIC CODE	NUMBER OF COMPANIES	UK COMPANIES
None Supplied	237	204,493
7487 - Other business activities	87	65,177
7499 - Non-trading company	57	11,543
74990 - Non-trading company	48	8,064
47789 - Other retail sale of new goods in specialised stores (not commercial art galleries and opticians)	48	976
9999 - Dormant Company	38	22,587
82990 - Other business support service activities not elsewhere classified	31	29,245
5248 - Other retail specialised stores	30	2,240
70229 - Management consultancy activities other than financial management	29	15,760
99999 - Dormant Company	28	18,281
62020 - Information technology consultancy activities	27	10,137
98000 - Residents property management	20	2,664
62090 - Other information technology service activities	17	6,798
7222 - Other software consultancy and supply	16	8,345
4521 - General construction & civil engineering	15	6,321
96090 - Other service activities not elsewhere classified	13	10,018
7260 - Other computer related activities	12	8,686
9305 - Other service activities	11	10,525
7414 - Business & management consultancy	10	14,755
41100 - Development of building projects	9	3,697