

Fleet

2011 annual business confidence report



headlines

- The second half of 2011 saw a new record in company closures in Fleet when compared to any previous second half year.
- Q4 2011 saw a new record in company closures in Fleet when compared to any previous Q4.
- Q4 2011 was a record quarter for company closures in Fleet when compared to any quarter in history.
- December 2011 saw a new record in company closures in Fleet when compared to any previous December.
- November 2011 saw a new record in company closures in Fleet when compared to any previous November.

contents

new company registrations

closed companies (dissolved)

net company growth

uk company share

director age

director gender

naming trends

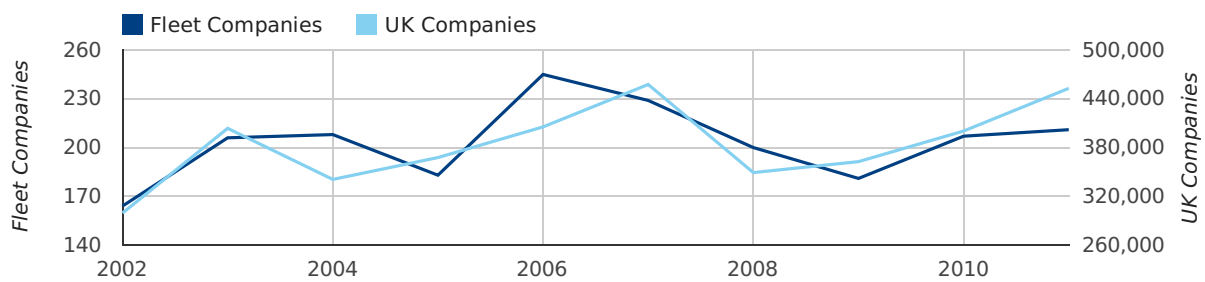
sic data

Annual Data (2011)

A total of 211 companies were formed in Fleet in 2011. This total is 1.9% higher than in 2010 and compares favourably to the UK figure of a 13.1% growth compared to 400,358 the previous year.

| YEAR | FLEET | UK |
|-------------|------------|----------------|
| 2011 | 211 | 452,870 |
| 2010 | 207 | 400,358 |
| 2009 | 181 | 362,675 |
| 2008 | 200 | 349,203 |
| 2007 | 229 | 457,649 |
| RECORD YEAR | 2006 (245) | 2007 (457,649) |

new companies by year



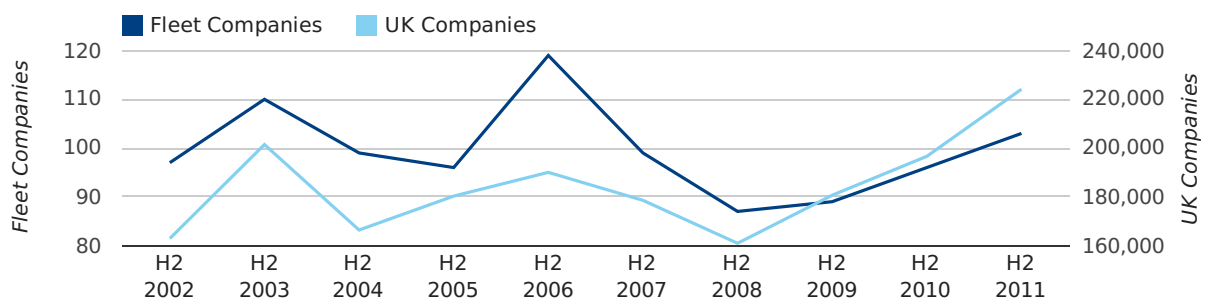
Half Year Data (Jul-Dec 2011)

In the second half of 2011 a total of 103 companies were formed in Fleet. This figure is 7.3% higher than last year, which compares badly to the UK wide figure of 14.0%.

The highest total for a second half year in Fleet occurred in 2006 when a total of 119 were formed.

| HALF YEAR (JUL-DEC) | FLEET | UK |
|---------------------|------------|----------------|
| 2011 | 103 | 224,135 |
| 2010 | 96 | 196,609 |
| % CHANGE | 7.3% | 14.0% |
| RECORD YEAR | 2006 (119) | 2011 (224,135) |

new companies by half year



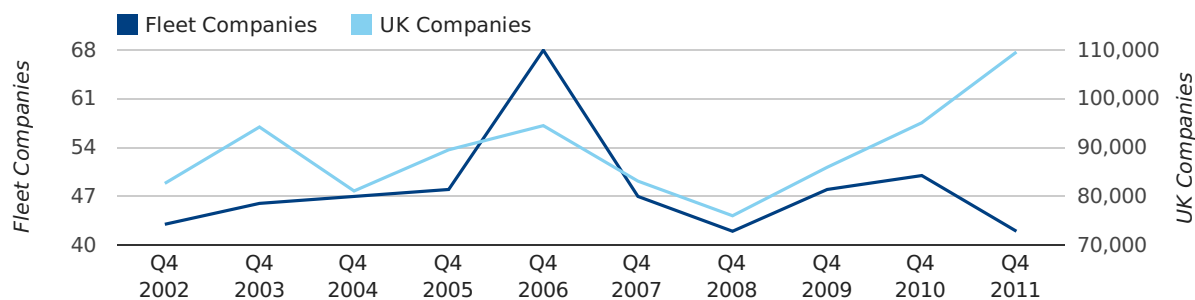
Quarterly Data (Q4 Oct-Dec 2011)

A total of 42 companies were registered in Fleet during the fourth quarter of 2011 (Oct 2011 - Dec 2011).

This figure is a decrease of 16.0% versus the same period last year (Q4 2010). This figure compares badly to the UK as a whole, which saw an increase of 15.3% against the same period last year.

| FOURTH QUARTER (OCT 2011 - DEC 2011) | FLEET | UK |
|--------------------------------------|-----------|----------------|
| 2011 | 42 | 109,623 |
| 2010 | 50 | 95,117 |
| % CHANGE | -16.0% | 15.3% |
| RECORD YEAR | 2006 (68) | 2011 (109,623) |

new companies by quarter



Monthly Data (Oct, Nov & Dec 2011)

new companies by month



| | OCTOBER | NOVEMBER | DECEMBER |
|-----------------------|-----------|-----------|-----------|
| NEW COMPANIES IN 2011 | 11 | 19 | 12 |
| NEW COMPANIES IN 2010 | 15 | 23 | 12 |
| % CHANGE | -26.7% | -17.4% | 0.0% |
| RECORD YEAR | 2006 (31) | 2010 (23) | 2009 (19) |

Annual Data (2011)

A total of 193 companies were dissolved in Fleet in 2011. This total is 13.5% higher than in 2010 and compares favourably to the UK figure of 8.1% decrease compared to the previous year.

| YEAR | FLEET | UK |
|-------------|------------|----------------|
| 2011 | 193 | 314,523 |
| 2010 | 170 | 342,232 |
| 2009 | 198 | 533,773 |
| 2008 | 121 | 237,901 |
| 2007 | 123 | 220,295 |
| RECORD YEAR | 2009 (198) | 2009 (533,773) |

dissolved companies by year



Half Year Data (Jul-Dec 2011)

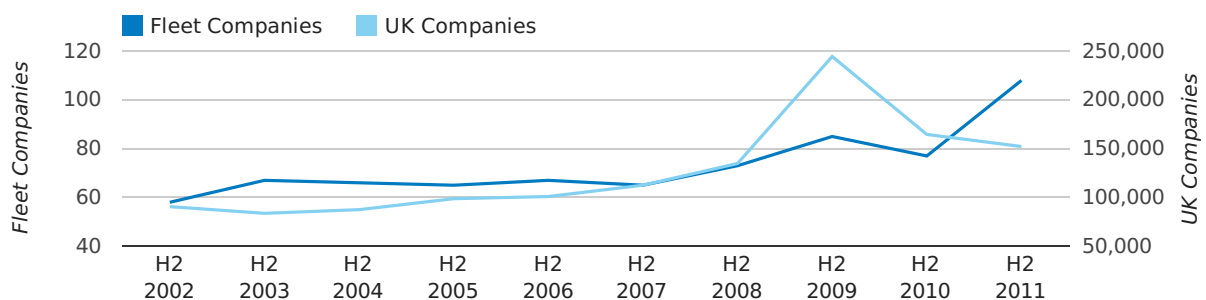
The second half of 2011 saw a new record in company closures in Fleet when compared to any previous second half year.

In the second half of 2011 a total of 108 companies were dissolved in Fleet. This figure is 40.3% higher than last year, which compares badly to the UK wide change of -7.5%.

The highest total for a second half year in Fleet occurred in 2011 when a total of 108 were closed.

| HALF YEAR (JUL-DEC) | FLEET | UK |
|---------------------|------------|----------------|
| 2011 | 108 | 152,213 |
| 2010 | 77 | 164,601 |
| % CHANGE | 40.3% | -7.5% |
| RECORD YEAR | 2011 (108) | 2009 (244,537) |

dissolved companies by half year



Quarterly Data (Q4 Oct-Dec 2011)

Q4 2011 saw a new record in company closures in Fleet when compared to any previous Q4.

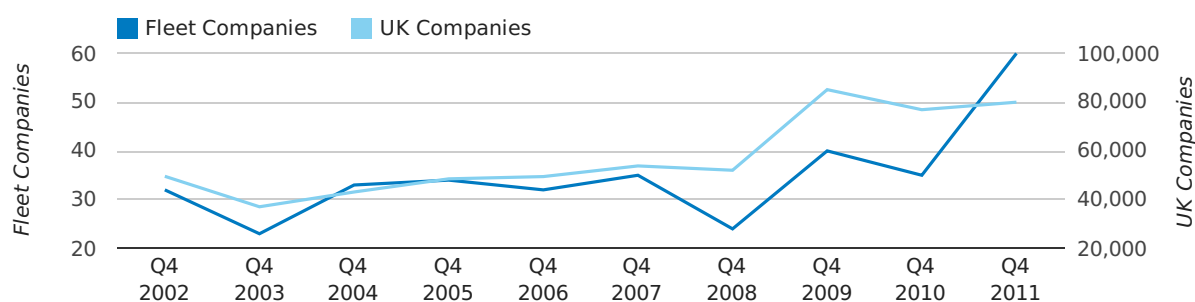
Q4 2011 was a record quarter for company closures in Fleet when compared to any quarter in history.

A total of 60 companies were dissolved in Fleet during the fourth quarter of 2011 (Oct 2011 - Dec 2011).

This figure is an increase of 71.4% versus the same period last year (Q4 2010). This figure compares poorly to the UK as a whole, which saw an increase of 4.0% against the same period last year.

| FOURTH QUARTER (OCT 2011 - DEC 2011) | FLEET | UK |
|--------------------------------------|-----------|---------------|
| 2011 | 60 | 79,983 |
| 2010 | 35 | 76,896 |
| % CHANGE | 71.4% | 4.0% |
| RECORD YEAR | 2011 (60) | 2009 (85,136) |

dissolved companies by quarter

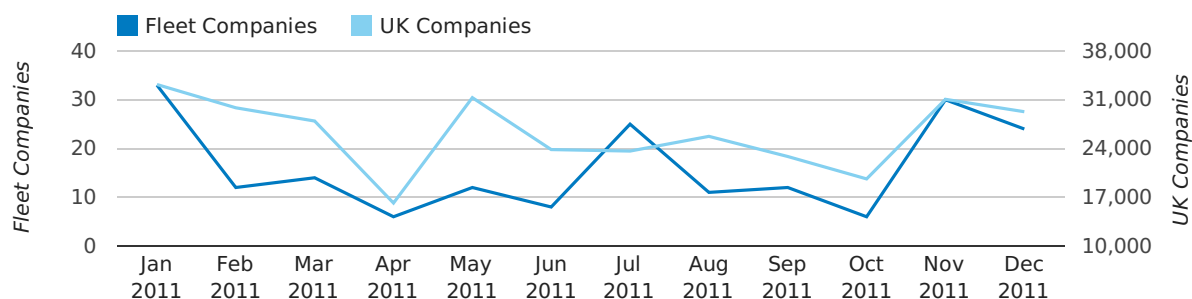


Monthly Data (Oct, Nov & Dec 2011)

December 2011 saw a new record in company closures in Fleet when compared to any previous December.

November 2011 saw a new record in company closures in Fleet when compared to any previous November.

dissolved companies by month



| | OCTOBER | NOVEMBER | DECEMBER |
|--------------------------|-----------|-----------|-----------|
| CLOSED COMPANIES IN 2011 | 6 | 30 | 24 |
| CLOSED COMPANIES IN 2010 | 15 | 13 | 7 |
| % CHANGE | -60.0% | 130.8% | 243% |
| RECORD YEAR | 2007 (15) | 2011 (30) | 2011 (24) |

Annual Data (2011)

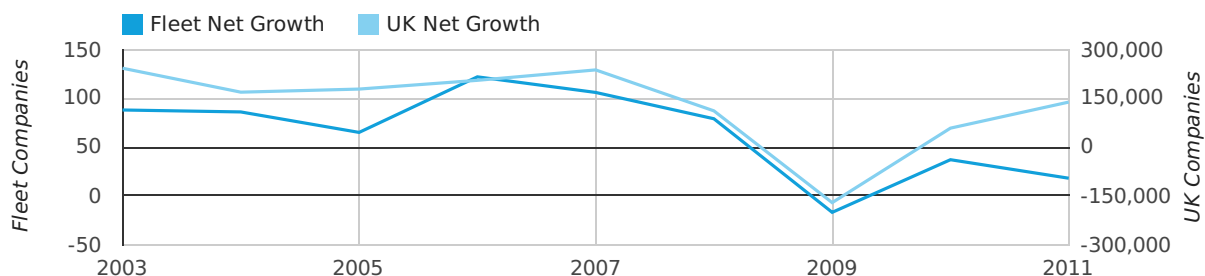
A total of 18 companies were added to the company register for Fleet in 2011. This number represents growth of 8.7% which compares unfavourably to the UK figure of 34.6%.

This number is 19 companies lower than the previous year.

The highest net company growth figure ever seen in one year came in 2006 when the Fleet company register grew by 122 companies.

| YEAR | FLEET | UK |
|-------------|------------|----------------|
| 2011 | 18 | 138,347 |
| 2010 | 37 | 58,126 |
| 2009 | -17 | -171,098 |
| 2008 | 79 | 111,302 |
| 2007 | 106 | 237,354 |
| RECORD YEAR | 2006 (122) | 2003 (242,543) |

net growth by year

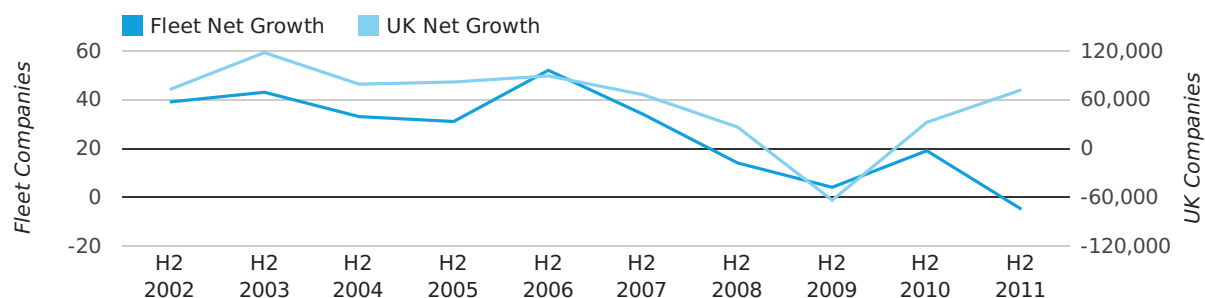


Half Year Data (Jul-Dec 2011)

In the second half of 2011 the company register for Fleet decreased by 5 companies. This figure is 126.3% lower than last year, which compares badly to a UK increase of 124.7%.

| HALF YEAR (JUL-DEC) | FLEET | UK |
|---------------------|-----------|----------------|
| 2011 | -5 | 71,922 |
| 2010 | 19 | 32,008 |
| % CHANGE | -126.3% | 124.7% |
| RECORD YEAR | 1998 (57) | 2003 (117,772) |

net growth by half year



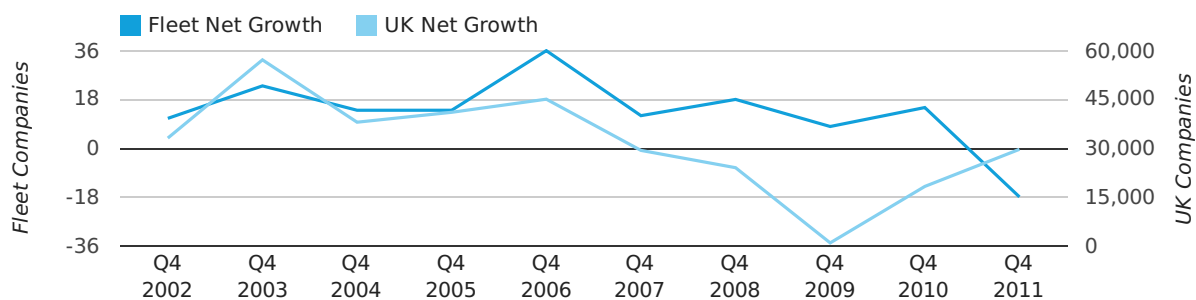
Quarterly Data (Q4 Oct-Dec 2011)

Net company growth for Fleet during the fourth quarter of 2011 (Oct 2011 - Dec 2011) was -18 companies.

This represents a decrease of 220.0% on the same period last year.

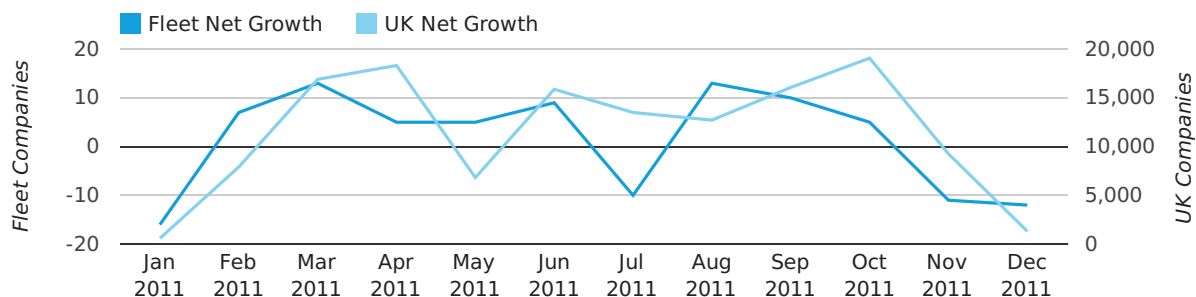
| FOURTH QUARTER (OCT 2011 - DEC 2011) | FLEET | UK |
|--------------------------------------|-----------|---------------|
| 2011 | -18 | 29,640 |
| 2010 | 15 | 18,221 |
| % CHANGE | -220.0% | 62.7% |
| RECORD YEAR | 2006 (36) | 2003 (57,175) |

net growth by quarter



Monthly Data (Oct, Nov & Dec 2011)

net growth by month



Warning: Division by zero in /var/clients/duport/v3/website/confidence-reports/includes/parseBlurb.php(96) : eval()'d code on line 1 Warning: Division by zero in /var/clients/duport/v3/website/confidence-reports/includes/parseBlurb.php(96) : eval()'d code on line 1

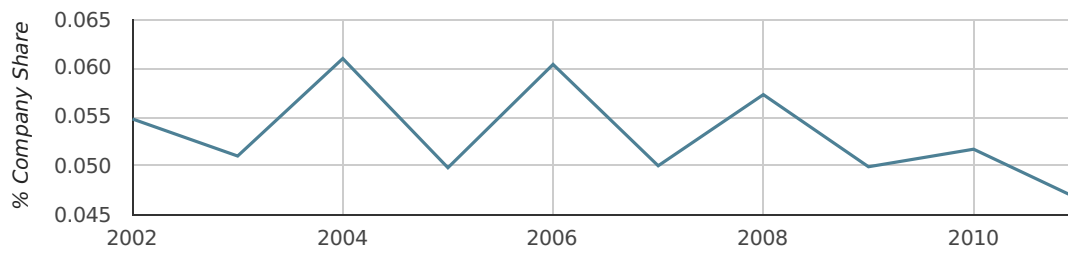
| | OCTOBER | NOVEMBER | DECEMBER |
|--------------------|-----------|-----------|-----------|
| NET GROWTH IN 2011 | 5 | -11 | -12 |
| NET GROWTH IN 2010 | 0 | 10 | 5 |
| % CHANGE | 0.0% | -210.0% | -340.0% |
| RECORD YEAR | 2006 (19) | 1998 (13) | 2006 (14) |

Annual Data (2011)

In 2011 Fleet formed 0.0% of all UK companies. This is a decline on 2010 when Fleet was responsible for 0.1% of all UK companies.

| YEAR | FLEET |
|--------------------------|-------------|
| 2011 | 0.0% |
| 2010 | 0.1% |
| 2009 | 0.0% |
| 2008 | 0.1% |
| 2007 | 0.1% |
| RECORD YEAR (SINCE 1960) | 1966 (0.1%) |

company share by year

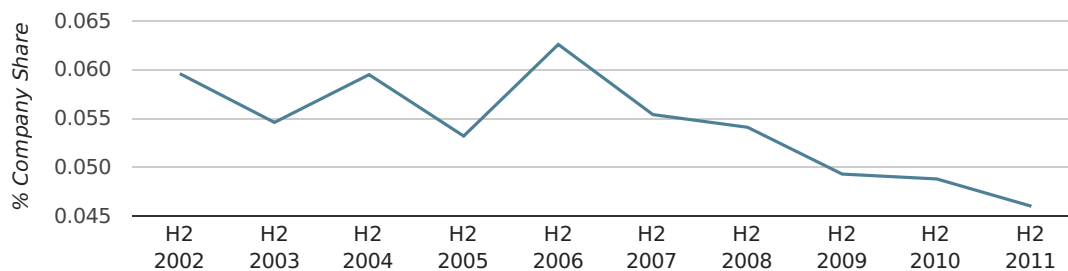


Half Year Data (Jul-Dec 2011)

In the second half of 2011 Fleet formed 0.0% of all UK companies. This is the same as the 2010 figure of 0.0%.

| HALF YEAR (JUL-DEC) | FLEET |
|--------------------------|-------------|
| 2011 | 0.0% |
| 2010 | 0.0% |
| 2009 | 0.0% |
| 2008 | 0.1% |
| 2007 | 0.1% |
| RECORD YEAR (SINCE 1960) | 1966 (0.2%) |

company share by half year

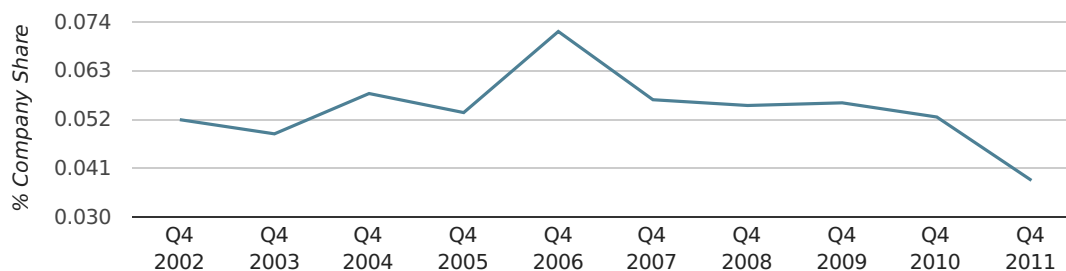


Quarterly Data (Q4 Oct-Dec 2011)

In the fourth quarter of 2011, Fleet formed 0.0% of all UK companies.

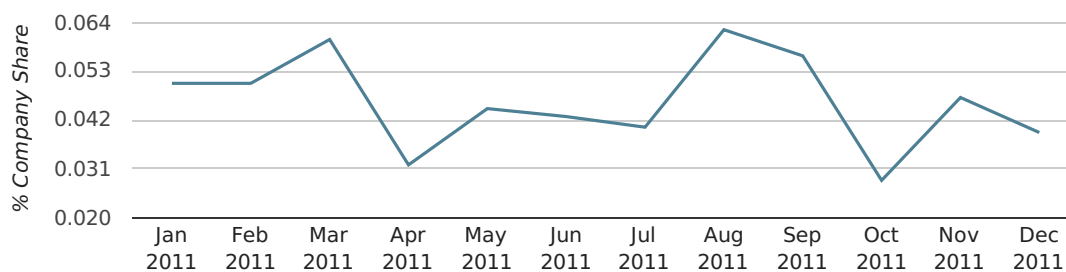
| FOURTH QUARTER (OCT 2011 - DEC 2011) | FLEET |
|--------------------------------------|-------------|
| 2011 | 0.0% |
| 2010 | 0.1% |
| 2009 | 0.1% |
| 2008 | 0.1% |
| 2007 | 0.1% |
| RECORD YEAR (SINCE 1960) | 1968 (0.1%) |

company share by quarter



Monthly Data (Oct, Nov & Dec 2011)

company share by month



| | OCTOBER | NOVEMBER | DECEMBER |
|----------------------------|-------------|-------------|-------------|
| UK FORMATION SHARE IN 2011 | 0.0% | 0.0% | 0.0% |
| UK FORMATION SHARE IN 2010 | 0.0% | 0.1% | 0.0% |
| % CHANGE | -36.3% | -29.7% | -11.3% |
| RECORD YEAR | 1968 (0.2%) | 1960 (0.4%) | 1963 (0.4%) |

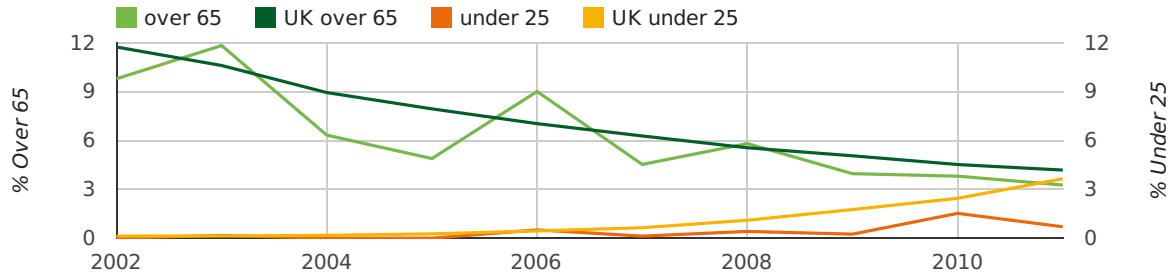
Annual Data (2011)

The average age of a director in 2011 was 45.3.

The percentage of directors under the age of 25 was 0.7% compared to the UK figure of 3.7%.

The percentage of directors over the age of 65 was 3.3% compared to the UK figure of 4.2%.

director age by year



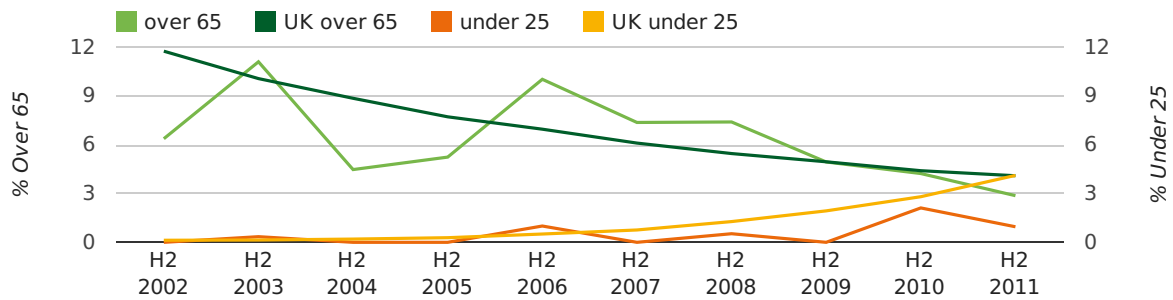
Half Year Data (Jul-Dec 2011)

The average age of a director in the second half of 2011 was 44.3.

The percentage of directors under the age of 25 was 1.0% compared to the UK figure of 4.1%.

The percentage of directors over the age of 65 was 2.9% compared to the UK figure of 4.1%.

director age by half year



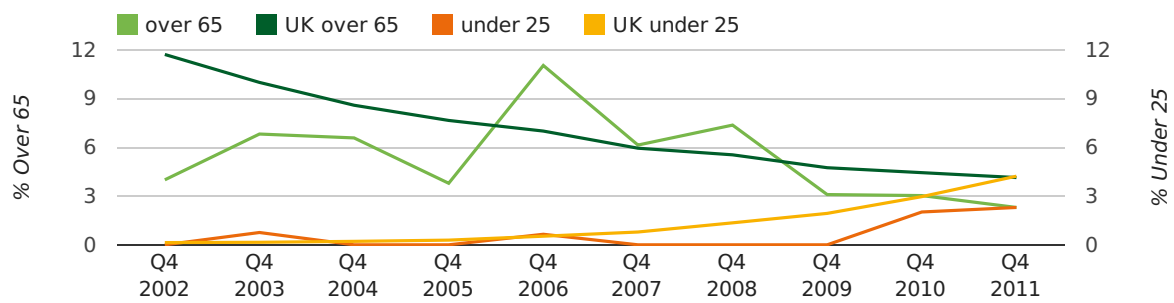
Quarterly Data (Q4 Oct-Dec 2011)

The average age of a director in the fourth quarter of 2011 was 44.5.

The percentage of directors under the age of 25 was 2.3% compared to the UK figure of 4.2%.

The percentage of directors over the age of 65 was 2.3% compared to the UK figure of 4.1%.

director age by quarter

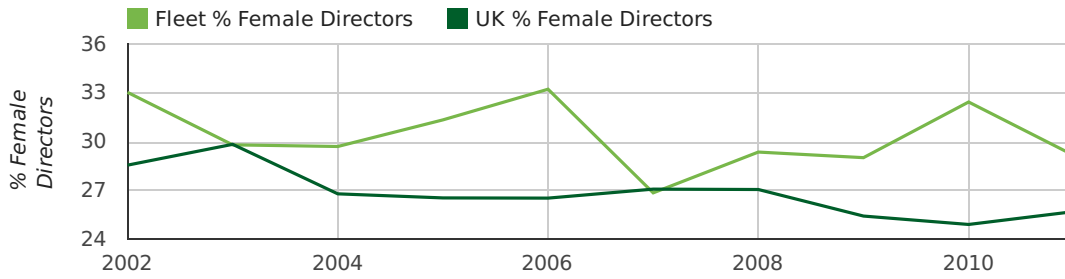


Annual Data (2011)

The record year for female directors in Fleet was 1857 when 36.4% of all directors were female.

The percentage of female directors in Fleet in 2011 was 33.0%. The average for the UK during this time was 28.6%

director gender by year

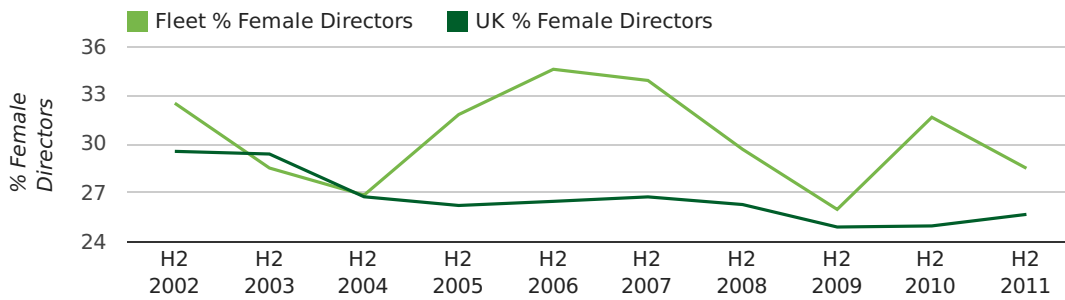


Half Year Data (Jul-Dec 2011)

The record second half year for female directors in Fleet was 1860 when 42.9% of all directors were female.

28.5% of all director appointments in Fleet in the second half of 2011 were female. This compares to a UK average of 25.7% for the same period.

director gender by half year

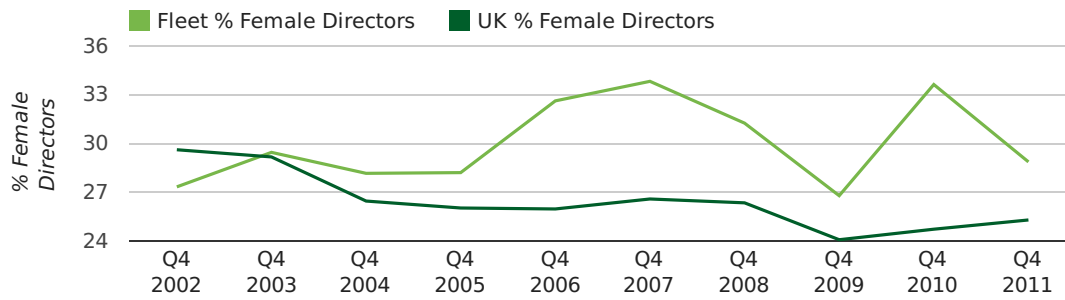


Quarterly Data (Q4 Oct-Dec 2011)

The record fourth quarter for female directors in Fleet was in 1977 when 31.1% of all directors were female.

28.9% of all director appointments in Fleet in the fourth quarter of 2011 were female. This compares to a UK average of 25.3% for the same period.

director gender by quarter



Previous 12 months (Dec 2010-Dec 2011)

Excluding: LIMITED, LTD, &, UK, SERVICES, THE, (UK), AND, LTD., A, LLP, SOLUTIONS, COMPANY, OF.

| WORD | PERCENTAGE | UK WORD | UK PERCENTAGE |
|---------------|------------|--------------|---------------|
| CONSULTING | 3.66% | CONSULTING | 5.07% |
| CONSULTANCY | 1.57% | MANAGEMENT | 4.74% |
| MARKETING | 1.31% | CONSULTANCY | 3.26% |
| IT | 1.05% | PROPERTY | 2.37% |
| PROPERTY | 0.79% | TRADING | 2.07% |
| LETTINGS | 0.79% | DESIGN | 1.92% |
| VERTU | 0.79% | ASSOCIATES | 1.86% |
| CONSULTANTS | 0.79% | ENGINEERING | 1.78% |
| HEATING | 0.79% | BUSINESS | 1.78% |
| ASSOCIATES | 0.79% | CONSULTANTS | 1.76% |
| FLEET | 0.79% | CONSTRUCTION | 1.73% |
| INSTALLATIONS | 0.52% | MEDIA | 1.71% |
| LONDON | 0.52% | LONDON | 1.63% |
| GLOBAL | 0.52% | J | 1.51% |
| COUSINS | 0.52% | INVESTMENTS | 1.48% |
| CLARITY | 0.52% | GLOBAL | 1.46% |
| C | 0.52% | IT | 1.41% |
| WHITE | 0.52% | CARE | 1.39% |
| P | 0.52% | PROPERTIES | 1.29% |
| MUSIC | 0.52% | ELECTRICAL | 1.29% |
| UNIVERSAL | 0.52% | M | 1.27% |
| DESIGN | 0.52% | BUILDING | 1.26% |
| CONSTRUCTION | 0.52% | ENERGY | 1.25% |
| KEH | 0.52% | S | 1.20% |
| MANAGEMENT | 0.52% | ENTERPRISES | 1.20% |

Previous 36 months, excluding companies less than 12 months old

| SIC CODE | NUMBER OF COMPANIES | UK COMPANIES |
|--|---------------------|--------------|
| None Supplied | 63 | 205,525 |
| 7222 - Other software consultancy and supply | 26 | 7,398 |
| 62020 - Information technology consultancy activities | 20 | 12,072 |
| 7487 - Other business activities | 20 | 57,052 |
| 70229 - Management consultancy activities other than financial management | 19 | 17,765 |
| 82990 - Other business support service activities not elsewhere classified | 12 | 32,483 |
| 99999 - Dormant Company | 11 | 21,846 |
| 62090 - Other information technology service activities | 9 | 7,493 |
| 74909 - Other professional, scientific and technical activities not elsewhere classified | 8 | 8,671 |
| 7260 - Other computer related activities | 7 | 7,667 |
| 7414 - Business & management consultancy | 7 | 13,034 |
| 62012 - Business and domestic software development | 6 | 3,714 |
| 9999 - Dormant Company | 6 | 20,199 |
| 69201 - Accounting and auditing activities | 6 | 3,633 |
| 47910 - Retail sale via mail order houses or via Internet | 5 | 2,740 |
| 96090 - Other service activities not elsewhere classified | 5 | 11,768 |
| 96020 - Hairdressing and other beauty treatment | 4 | 2,380 |
| 74990 - Non-trading company | 4 | 8,929 |
| 9305 - Other service activities | 4 | 9,492 |
| 7450 - Labour recruitment | 4 | 1,864 |