

Glasgow

q3 2011 business confidence report



headlines

- Q3 2011 saw a new record in company registrations in Glasgow when compared to any previous Q3.
- September 2011 saw a new record in company registrations in Glasgow when compared to any previous September.
- August 2011 saw a new record in company registrations in Glasgow when compared to any previous August.

contents

new company registrations

closed companies (dissolved)

net company growth

uk company share

director age

director gender

naming trends

sic data

Quarterly Data (Q3 Jul-Sep 2011)

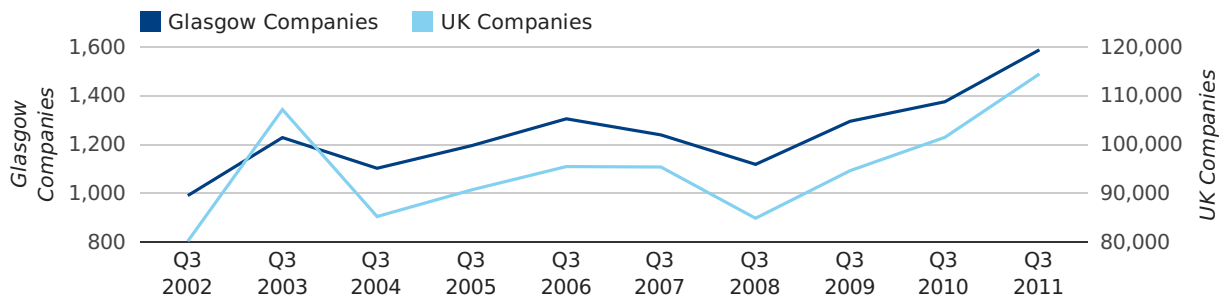
Q3 2011 saw a new record in company registrations in Glasgow when compared to any previous Q3.

A total of 1,589 companies were registered in Glasgow during the third quarter of 2011 (Jul 2011 - Sep 2011).

This figure is an increase of 15.5% versus the same period last year (Q3 2010). This figure compares well to the UK as a whole, which saw an increase of 12.8% against the same period last year.

THIRD QUARTER (JUL 2011 - SEP 2011)	GLASGOW	UK
2011	1,589	114,512
2010	1,376	101,492
% CHANGE	15.5%	12.8%
RECORD YEAR	2011 (1,589)	2011 (114,512)

new companies by quarter



Monthly Data (Jul, Aug & Sep 2011)

September 2011 saw a new record in company registrations in Glasgow when compared to any previous September.

August 2011 saw a new record in company registrations in Glasgow when compared to any previous August.

new companies by month



	JULY	AUGUST	SEPTEMBER
NEW COMPANIES IN 2011	423	602	564
NEW COMPANIES IN 2010	427	470	479
% CHANGE	-0.9%	28.1%	17.7%
RECORD YEAR	2010 (427)	2011 (602)	2011 (564)

Quarterly Data (Q3 Jul-Sep 2011)

A total of 1,256 companies were dissolved in Glasgow during the third quarter of 2011 (Jul 2011 - Sep 2011).

This figure is a decrease of 6.6% versus the same period last year (Q3 2010). This figure compares poorly to the UK as a whole, which saw a decrease of 17.6% against the same period last year.

THIRD QUARTER (JUL 2011 - SEP 2011)	GLASGOW	UK
2011	1,256	72,230
2010	1,345	87,705
% CHANGE	-6.6%	-17.6%
RECORD YEAR	2009 (1,640)	2009 (159,401)

dissolved companies by quarter



Monthly Data (Jul, Aug & Sep 2011)

dissolved companies by month



	JULY	AUGUST	SEPTEMBER
CLOSED COMPANIES IN 2011	356	416	484
CLOSED COMPANIES IN 2010	569	283	493
% CHANGE	-37.4%	47.0%	-2%
RECORD YEAR	2010 (569)	2009 (799)	2010 (493)

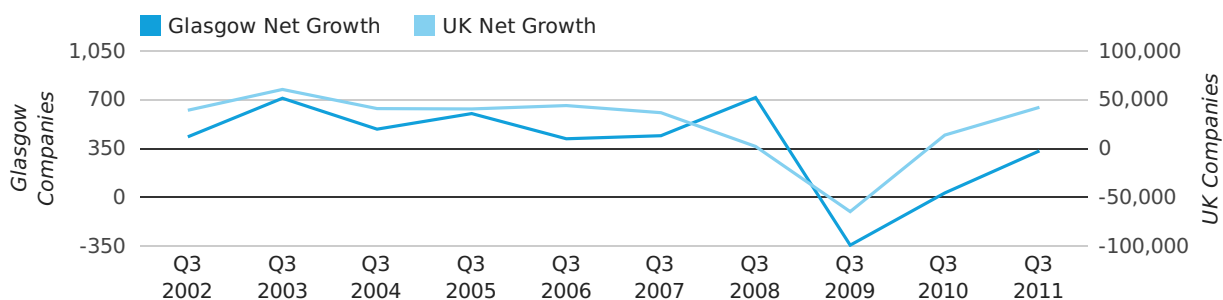
Quarterly Data (Q3 Jul-Sep 2011)

Net company growth for Glasgow during the third quarter of 2011 (Jul 2011 - Sep 2011) was 333 companies.

This represents an increase of 974.2% on the same period last year.

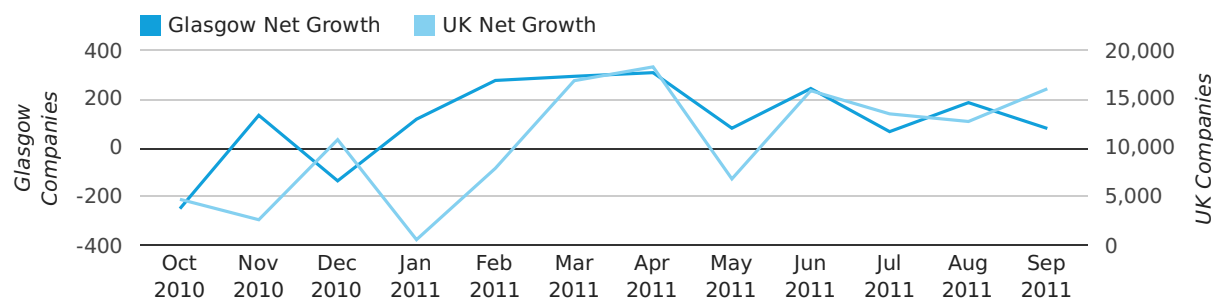
THIRD QUARTER (JUL 2011 - SEP 2011)	GLASGOW	UK
2011	333	42,282
2010	31	13,787
% CHANGE	974.2%	206.7%
RECORD YEAR	2008 (716)	2003 (60,597)

net growth by quarter



Monthly Data (Jul, Aug & Sep 2011)

net growth by month



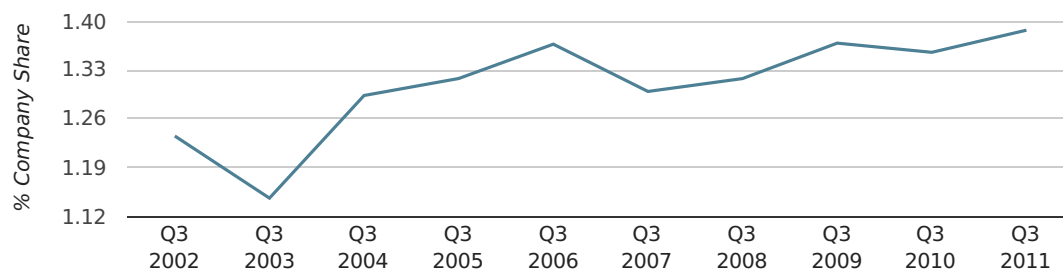
	JULY	AUGUST	SEPTEMBER
NET GROWTH IN 2011	67	186	80
NET GROWTH IN 2010	-142	187	-14
% CHANGE	-147.2%	-0.5%	-671.4%
RECORD YEAR	2003 (243)	2008 (385)	2008 (317)

Quarterly Data (Q3 Jul-Sep 2011)

In the third quarter of 2011, Glasgow formed 1.4% of all UK companies.

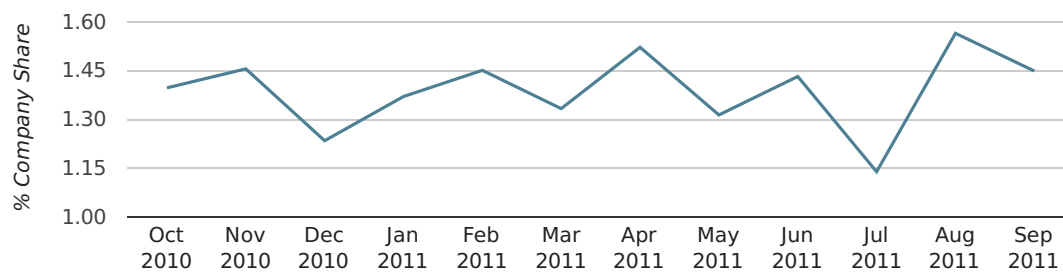
THIRD QUARTER (JUL 2011 - SEP 2011)	GLASGOW
2011	1.4%
2010	1.4%
2009	1.4%
2008	1.3%
2007	1.3%
RECORD YEAR (SINCE 1960)	1975 (2.5%)

company share by quarter



Monthly Data (Jul, Aug & Sep 2011)

company share by month



	JULY	AUGUST	SEPTEMBER
UK FORMATION SHARE IN 2011	1.1%	1.6%	1.4%
UK FORMATION SHARE IN 2010	1.3%	1.5%	1.4%
% CHANGE	-9.3%	7.8%	6.3%
RECORD YEAR	1975 (3.5%)	1967 (2.4%)	1990 (2.7%)

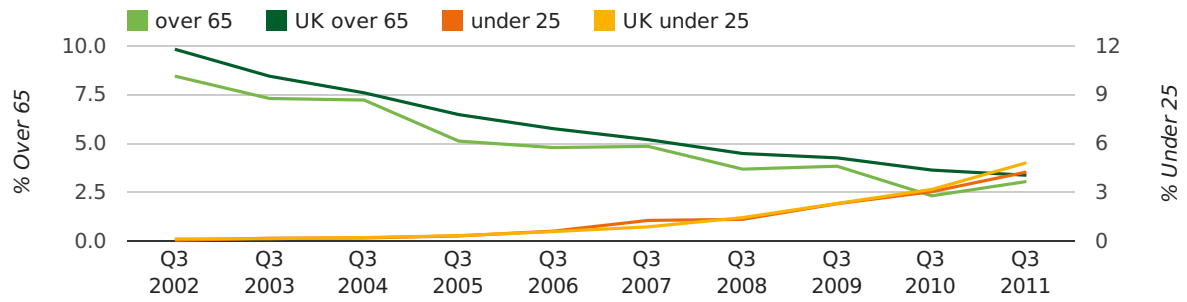
Quarterly Data (Q3 Jul-Sep 2011)

The average age of a director in the third quarter of 2011 was 42.5.

The percentage of directors under the age of 25 was 4.3% compared to the UK figure of 4.0%.

The percentage of directors over the age of 65 was 3.1% compared to the UK figure of 4.1%.

director age by quarter

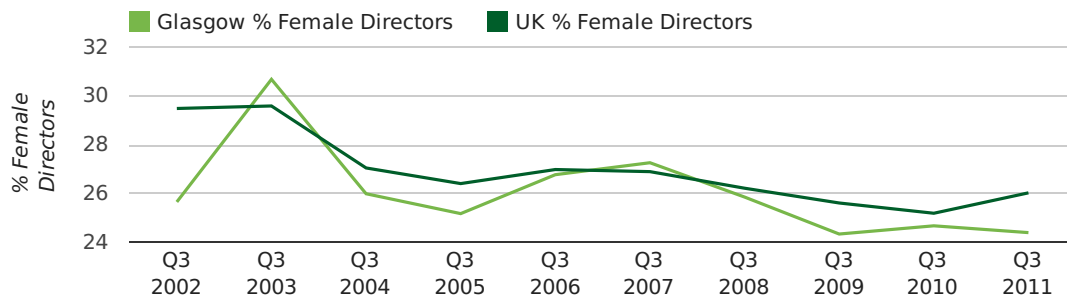


Quarterly Data (Q3 Jul-Sep 2011)

The record third quarter for female directors in Glasgow was in 1862 when 50.0% of all directors were female.

24.4% of all director appointments in Glasgow in the third quarter of 2011 were female. This compares to a UK average of 26.0% for the same period.

director gender by quarter



Previous 12 months (Sep 2010-Sep 2011)

Excluding: LIMITED, LTD, &, UK, SERVICES, THE, (UK), AND, LTD., A, LLP, SOLUTIONS, COMPANY, OF.

WORD	PERCENTAGE	UK WORD	UK PERCENTAGE
(SCOTLAND)	2.96%	CONSULTING	5.11%
SCOTLAND	1.73%	MANAGEMENT	4.75%
CONSULTING	1.59%	CONSULTANCY	3.19%
MANAGEMENT	1.56%	PROPERTY	2.41%
GLASGOW	1.55%	TRADING	2.06%
PROPERTY	1.32%	DESIGN	1.94%
CONSULTANCY	1.25%	ASSOCIATES	1.85%
TRADING	0.86%	BUSINESS	1.82%
ENERGY	0.79%	CONSULTANTS	1.76%
(GLASGOW)	0.79%	ENGINEERING	1.74%
BUSINESS	0.77%	MEDIA	1.72%
PROPERTIES	0.76%	CONSTRUCTION	1.72%
CENTRE	0.70%	LONDON	1.63%
ENTERPRISES	0.67%	J	1.47%
ENGINEERING	0.65%	GLOBAL	1.46%
DESIGN	0.64%	INVESTMENTS	1.43%
CONTRACTS	0.64%	CARE	1.42%
M	0.62%	IT	1.38%
CONSTRUCTION	0.61%	BUILDING	1.30%
INVESTMENTS	0.59%	PROPERTIES	1.28%
CONSULTANTS	0.59%	ELECTRICAL	1.27%
J	0.59%	M	1.25%
SYSTEMS	0.55%	ENERGY	1.22%
SOLAR	0.55%	TRAINING	1.21%
ELECTRICAL	0.54%	S	1.21%

Previous 36 months, excluding companies less than 12 months old

SIC CODE	NUMBER OF COMPANIES	UK COMPANIES
None Supplied	3,153	204,493
7487 - Other business activities	898	65,177
82990 - Other business support service activities not elsewhere classified	395	29,245
9999 - Dormant Company	239	22,587
99999 - Dormant Company	196	18,281
70229 - Management consultancy activities other than financial management	182	15,760
5530 - Restaurants	158	5,640
7414 - Business & management consultancy	151	14,755
5552 - Catering	128	2,363
62020 - Information technology consultancy activities	126	10,137
7260 - Other computer related activities	126	8,686
74909 - Other professional, scientific and technical activities not elsewhere classified	120	7,551
56103 - Take-away food shops and mobile food stands	116	1,777
9305 - Other service activities	115	10,525
96090 - Other service activities not elsewhere classified	103	10,018
5540 - Bars	98	2,379
7222 - Other software consultancy and supply	90	8,345
4521 - General construction & civil engineering	85	6,321
7499 - Non-trading company	84	11,543
62090 - Other information technology service activities	81	6,798