

Glasgow

2011 annual business confidence report



headlines

- 2011 was a record year for company registrations in Glasgow when compared to any year in history.
- The second half of 2011 saw a new record in company registrations in Glasgow when compared to any previous second half year.
- Q4 2011 saw a new record in company registrations in Glasgow when compared to any previous Q4.
- December 2011 saw a new record in company registrations in Glasgow when compared to any previous December.
- November 2011 saw a new record in company registrations in Glasgow when compared to any previous November.
- October 2011 saw a new record in company registrations in Glasgow when compared to any previous October.
- December 2011 saw a new record in company closures in Glasgow when compared to any previous December.
- November 2011 saw a new record in company closures in Glasgow when compared to any previous November.

contents

new company registrations

closed companies (dissolved)

net company growth

uk company share

director age

director gender

naming trends

sic data

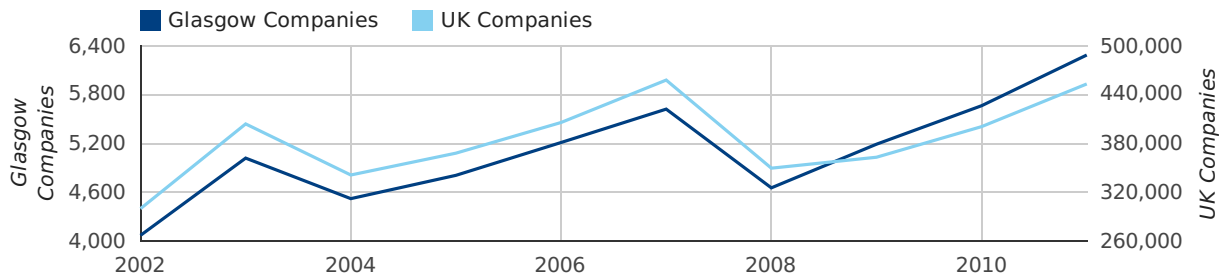
Annual Data (2011)

2011 was a record year for company registrations in Glasgow when compared to any year in history.

A total of 6,285 companies were formed in Glasgow in 2011. This total is 11.0% higher than in 2010 and compares equally to the UK figure of a 13.1% growth compared to 400,358 the previous year.

YEAR	GLASGOW	UK
2011	6,285	452,870
2010	5,661	400,358
2009	5,187	362,675
2008	4,650	349,203
2007	5,619	457,649
RECORD YEAR	2011 (6,285)	2007 (457,649)

new companies by year



Half Year Data (Jul-Dec 2011)

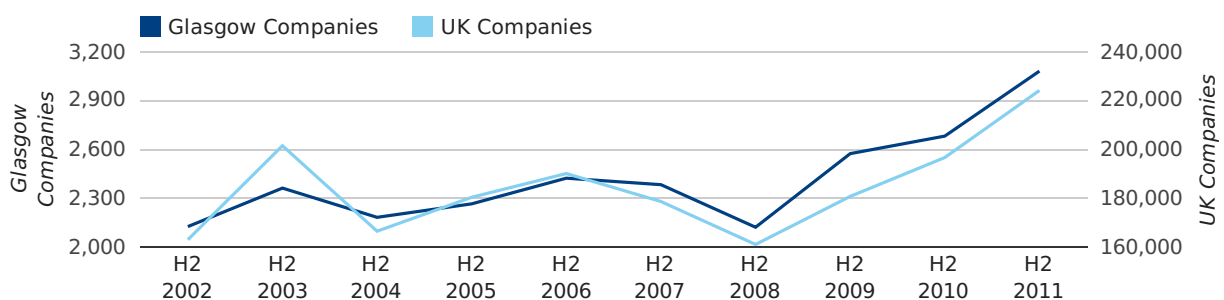
The second half of 2011 saw a new record in company registrations in Glasgow when compared to any previous second half year.

In the second half of 2011 a total of 3,081 companies were formed in Glasgow. This figure is 14.9% higher than last year, which compares well to the UK wide figure of 14.0%.

The highest total for a second half year in Glasgow occurred in 2011 when a total of 3,081 were formed.

HALF YEAR (JUL-DEC)	GLASGOW	UK
2011	3,081	224,135
2010	2,681	196,609
% CHANGE	14.9%	14.0%
RECORD YEAR	2011 (3,081)	2011 (224,135)

new companies by half year



Quarterly Data (Q4 Oct-Dec 2011)

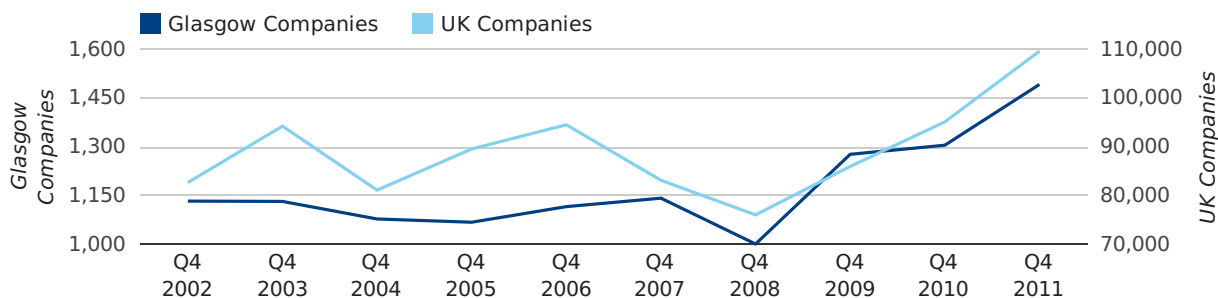
Q4 2011 saw a new record in company registrations in Glasgow when compared to any previous Q4.

A total of 1,492 companies were registered in Glasgow during the fourth quarter of 2011 (Oct 2011 - Dec 2011).

This figure is an increase of 14.3% versus the same period last year (Q4 2010). This figure compares badly to the UK as a whole, which saw an increase of 15.3% against the same period last year.

FOURTH QUARTER (OCT 2011 - DEC 2011)	GLASGOW	UK
2011	1,492	109,623
2010	1,305	95,117
% CHANGE	14.3%	15.3%
RECORD YEAR	2011 (1,492)	2011 (109,623)

new companies by quarter



Monthly Data (Oct, Nov & Dec 2011)

December 2011 saw a new record in company registrations in Glasgow when compared to any previous December.

November 2011 saw a new record in company registrations in Glasgow when compared to any previous November.

October 2011 saw a new record in company registrations in Glasgow when compared to any previous October.

new companies by month



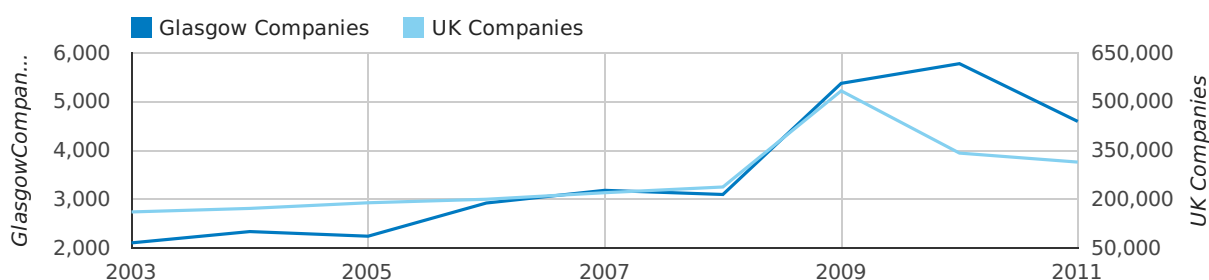
	OCTOBER	NOVEMBER	DECEMBER
NEW COMPANIES IN 2011	483	602	407
NEW COMPANIES IN 2010	470	500	335
% CHANGE	2.8%	20.4%	21.5%
RECORD YEAR	2011 (483)	2011 (602)	2011 (407)

Annual Data (2011)

A total of 4,598 companies were dissolved in Glasgow in 2011. This total is 20.5% lower than in 2010 and compares unfavourably to the UK figure of 8.1% decrease compared to the previous year.

YEAR	GLASGOW	UK
2011	4,598	314,523
2010	5,783	342,232
2009	5,379	533,773
2008	3,099	237,901
2007	3,184	220,295
RECORD YEAR	2010 (5,783)	2009 (533,773)

dissolved companies by year



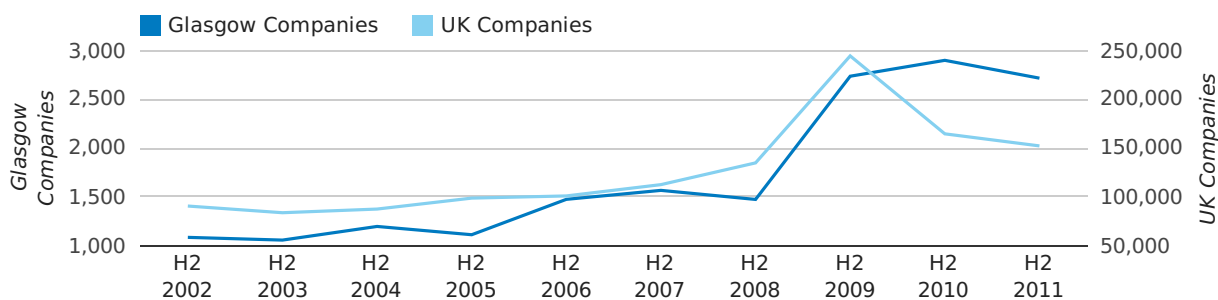
Half Year Data (Jul-Dec 2011)

In the second half of 2011 a total of 2,717 companies were dissolved in Glasgow. This figure is 6.3% lower than last year, which compares badly to the UK wide change of -7.5%.

The highest total for a second half year in Glasgow occurred in 2010 when a total of 2,900 were closed.

HALF YEAR (JUL-DEC)	GLASGOW	UK
2011	2,717	152,213
2010	2,900	164,601
% CHANGE	-6.3%	-7.5%
RECORD YEAR	2010 (2,900)	2009 (244,537)

dissolved companies by half year



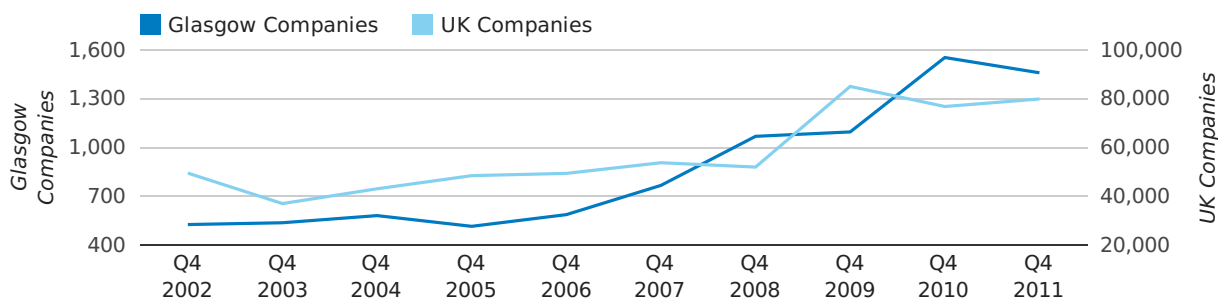
Quarterly Data (Q4 Oct-Dec 2011)

A total of 1,461 companies were dissolved in Glasgow during the fourth quarter of 2011 (Oct 2011 - Dec 2011).

This figure is a decrease of 6.0% versus the same period last year (Q4 2010). This figure compares well to the UK as a whole, which saw an increase of 4.0% against the same period last year.

FOURTH QUARTER (OCT 2011 - DEC 2011)	GLASGOW	UK
2011	1,461	79,983
2010	1,555	76,896
% CHANGE	-6.0%	4.0%
RECORD YEAR	2010 (1,555)	2009 (85,136)

dissolved companies by quarter



Monthly Data (Oct, Nov & Dec 2011)

December 2011 saw a new record in company closures in Glasgow when compared to any previous December.

November 2011 saw a new record in company closures in Glasgow when compared to any previous November.

dissolved companies by month



	OCTOBER	NOVEMBER	DECEMBER
CLOSED COMPANIES IN 2011	383	466	612
CLOSED COMPANIES IN 2010	719	366	470
% CHANGE	-46.7%	27.3%	30%
RECORD YEAR	2008 (876)	2011 (466)	2011 (612)

Annual Data (2011)

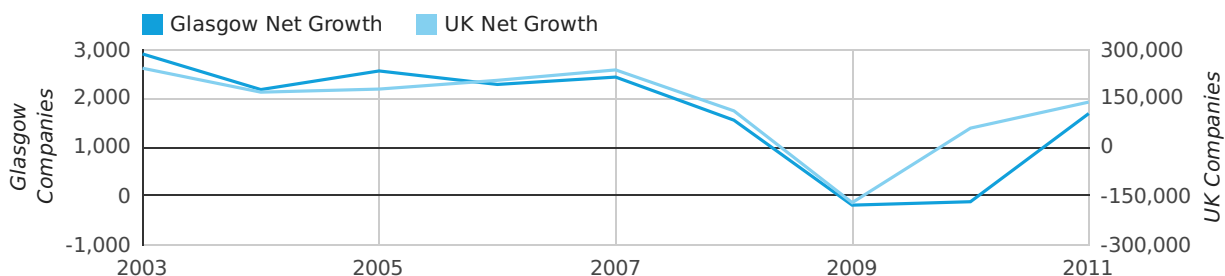
A total of 1,687 companies were added to the company register for Glasgow in 2011. This number represents growth of 29.8% which compares unfavourably to the UK figure of 34.6%.

This number is 1,809 companies higher than the previous year.

The highest net company growth figure ever seen in one year came in 2003 when the Glasgow company register grew by 2,910 companies.

YEAR	GLASGOW	UK
2011	1,687	138,347
2010	-122	58,126
2009	-192	-171,098
2008	1,551	111,302
2007	2,435	237,354
RECORD YEAR	2003 (2,910)	2003 (242,543)

net growth by year

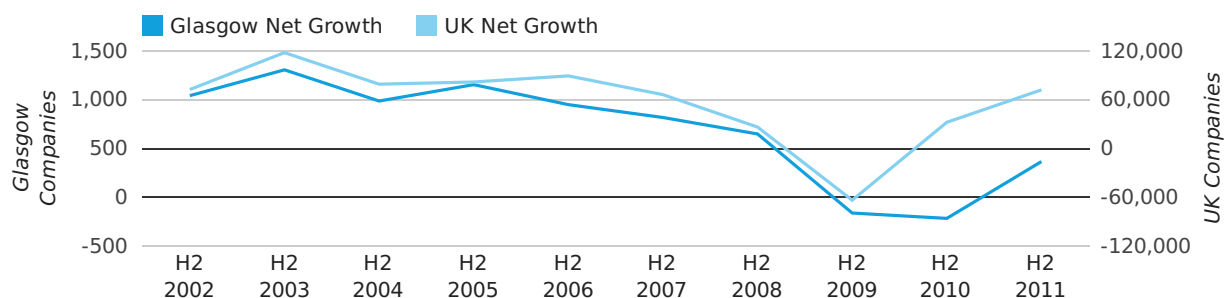


Half Year Data (Jul-Dec 2011)

In the second half of 2011 the company register for Glasgow increased by 364 companies. This figure is 266.2% lower than last year, which compares badly to a UK increase of 124.7%.

HALF YEAR (JUL-DEC)	GLASGOW	UK
2011	364	71,922
2010	-219	32,008
% CHANGE	-266.2%	124.7%
RECORD YEAR	2003 (1,305)	2003 (117,772)

net growth by half year



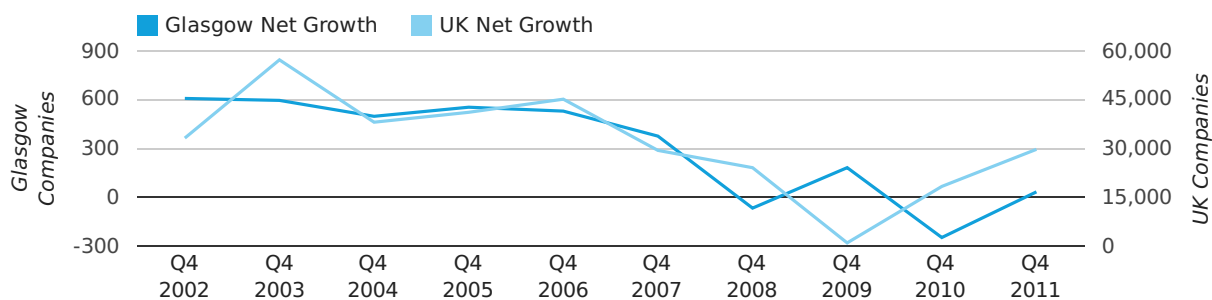
Quarterly Data (Q4 Oct-Dec 2011)

Net company growth for Glasgow during the fourth quarter of 2011 (Oct 2011 - Dec 2011) was 31 companies.

This represents an increase of 112.4% on the same period last year.

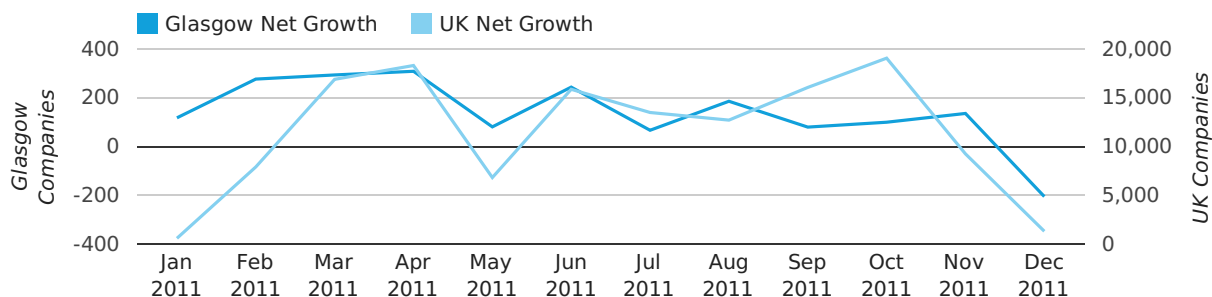
FOURTH QUARTER (OCT 2011 - DEC 2011)	GLASGOW	UK
2011	31	29,640
2010	-250	18,221
% CHANGE	-112.4%	62.7%
RECORD YEAR	2002 (606)	2003 (57,175)

net growth by quarter



Monthly Data (Oct, Nov & Dec 2011)

net growth by month



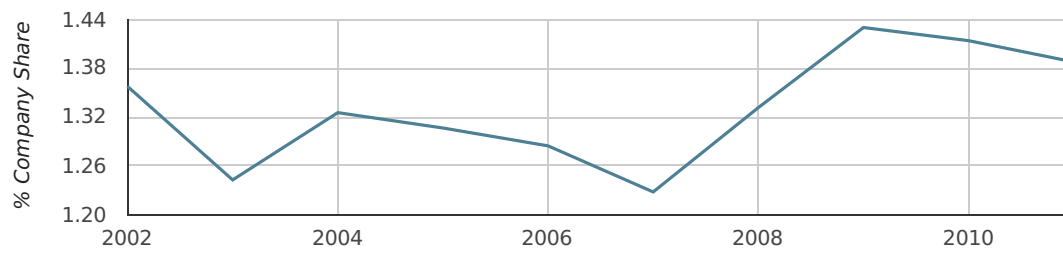
	OCTOBER	NOVEMBER	DECEMBER
NET GROWTH IN 2011	100	136	-205
NET GROWTH IN 2010	-249	134	-135
% CHANGE	-140.2%	1.5%	51.9%
RECORD YEAR	2003 (234)	2006 (233)	1996 (286)

Annual Data (2011)

In 2011 Glasgow formed 1.4% of all UK companies. This is no change on 2010 when Glasgow was responsible for 1.4% of all UK companies.

YEAR	GLASGOW
2011	1.4%
2010	1.4%
2009	1.4%
2008	1.3%
2007	1.2%
RECORD YEAR (SINCE 1960)	1991 (1.9%)

company share by year

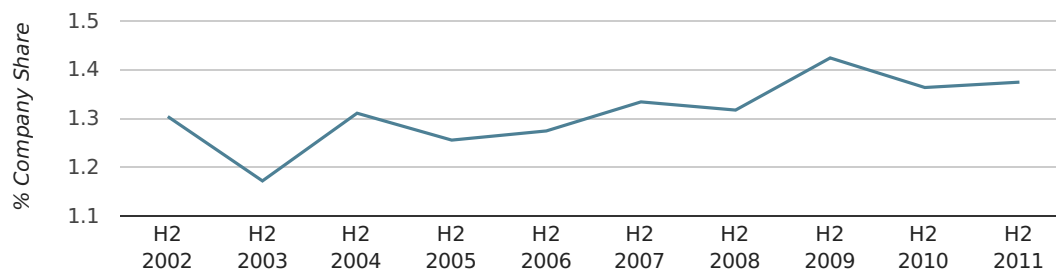


Half Year Data (Jul-Dec 2011)

In the second half of 2011 Glasgow formed 1.4% of all UK companies. This is the same as the 2010 figure of 1.4%.

HALF YEAR (JUL-DEC)	GLASGOW
2011	1.4%
2010	1.4%
2009	1.4%
2008	1.3%
2007	1.3%
RECORD YEAR (SINCE 1960)	1975 (2.1%)

company share by half year

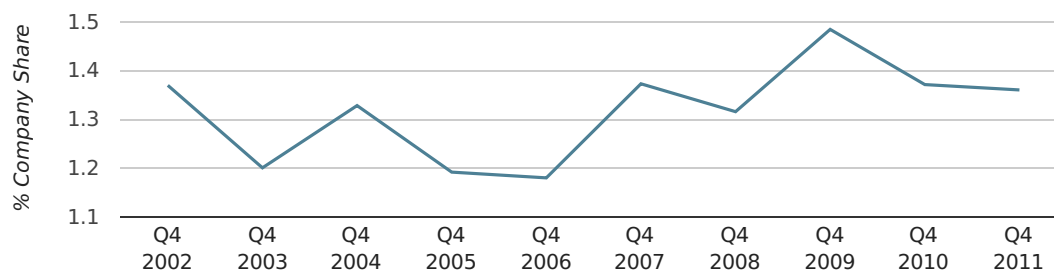


Quarterly Data (Q4 Oct-Dec 2011)

In the fourth quarter of 2011, Glasgow formed 1.4% of all UK companies.

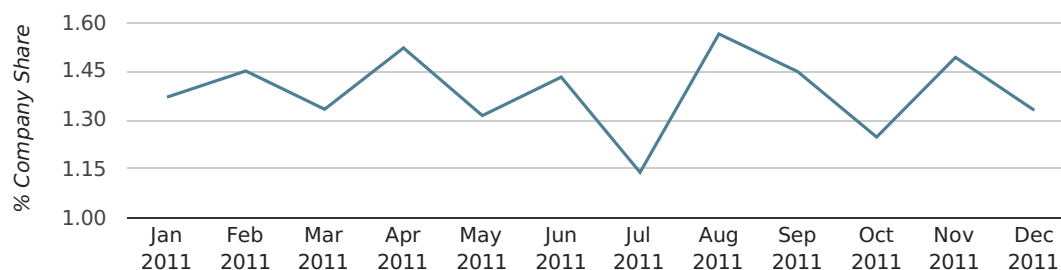
FOURTH QUARTER (OCT 2011 - DEC 2011)	GLASGOW
2011	1.4%
2010	1.4%
2009	1.5%
2008	1.3%
2007	1.4%
RECORD YEAR (SINCE 1960)	1980 (2.0%)

company share by quarter



Monthly Data (Oct, Nov & Dec 2011)

company share by month



	OCTOBER	NOVEMBER	DECEMBER
UK FORMATION SHARE IN 2011	1.2%	1.5%	1.3%
UK FORMATION SHARE IN 2010	1.4%	1.5%	1.2%
% CHANGE	-10.7%	2.6%	7.7%
RECORD YEAR	1985 (5.7%)	1969 (2.1%)	1996 (2.7%)

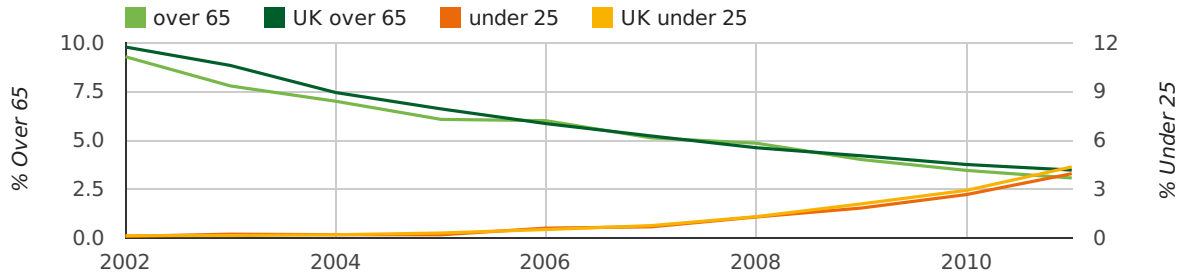
Annual Data (2011)

The average age of a director in 2011 was 42.8.

The percentage of directors under the age of 25 was 4.0% compared to the UK figure of 3.7%.

The percentage of directors over the age of 65 was 3.1% compared to the UK figure of 4.2%.

director age by year



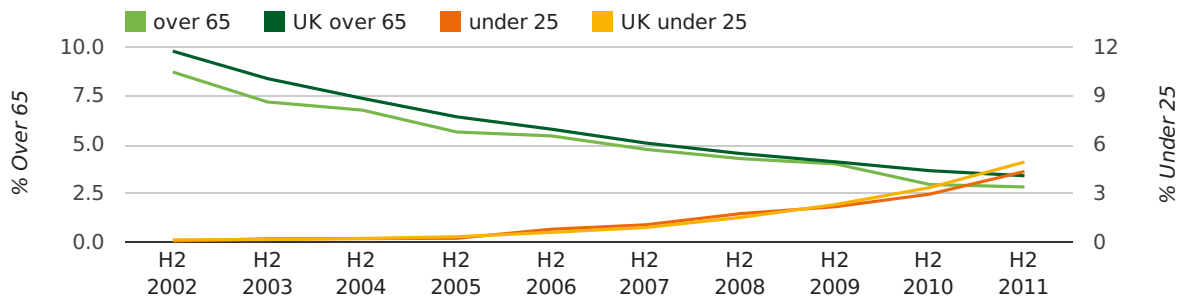
Half Year Data (Jul-Dec 2011)

The average age of a director in the second half of 2011 was 42.6.

The percentage of directors under the age of 25 was 4.4% compared to the UK figure of 4.1%.

The percentage of directors over the age of 65 was 2.8% compared to the UK figure of 4.1%.

director age by half year



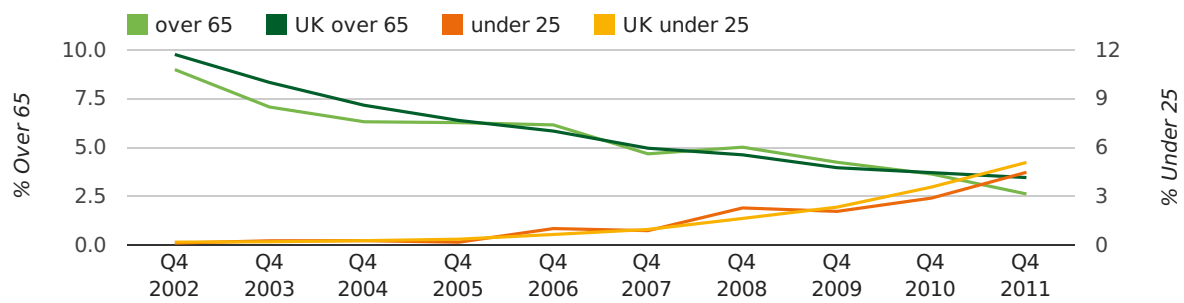
Quarterly Data (Q4 Oct-Dec 2011)

The average age of a director in the fourth quarter of 2011 was 42.7.

The percentage of directors under the age of 25 was 4.5% compared to the UK figure of 4.2%.

The percentage of directors over the age of 65 was 2.6% compared to the UK figure of 4.1%.

director age by quarter

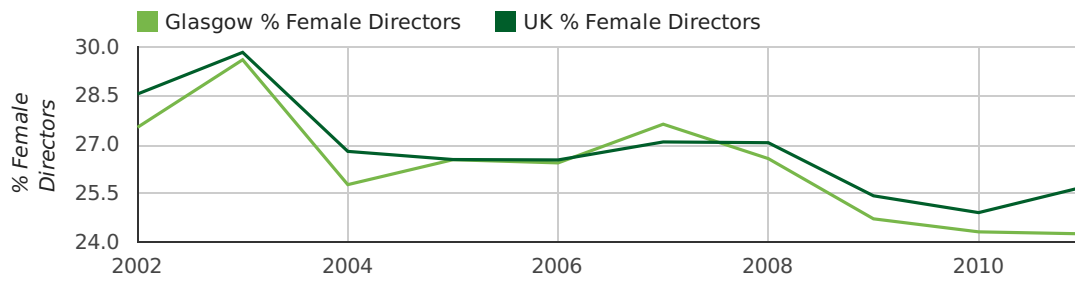


Annual Data (2011)

The record year for female directors in Glasgow was 1857 when 36.4% of all directors were female.

The percentage of female directors in Glasgow in 2011 was 27.5%. The average for the UK during this time was 28.6%

director gender by year

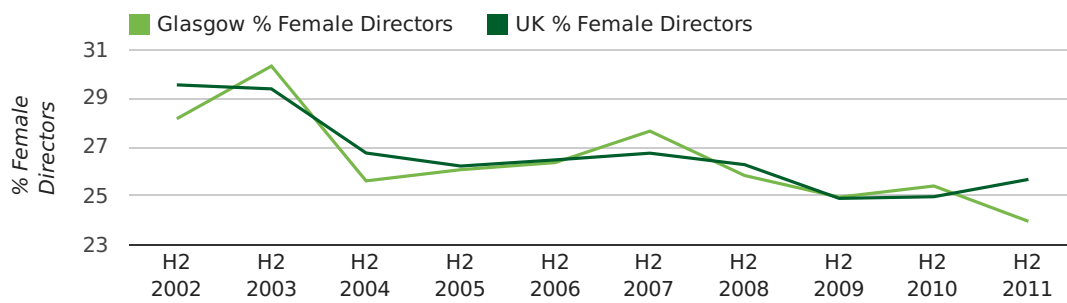


Half Year Data (Jul-Dec 2011)

The record second half year for female directors in Glasgow was 1860 when 42.9% of all directors were female.

24.0% of all director appointments in Glasgow in the second half of 2011 were female. This compares to a UK average of 25.7% for the same period.

director gender by half year

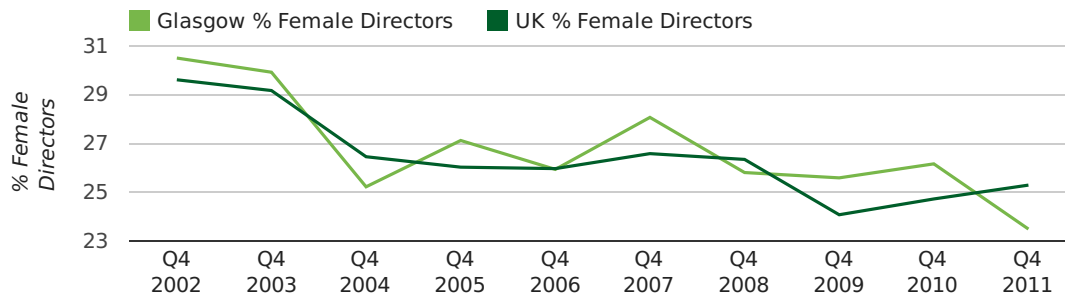


Quarterly Data (Q4 Oct-Dec 2011)

The record fourth quarter for female directors in Glasgow was in 1977 when 31.1% of all directors were female.

23.5% of all director appointments in Glasgow in the fourth quarter of 2011 were female. This compares to a UK average of 25.3% for the same period.

director gender by quarter



Previous 12 months (Dec 2010-Dec 2011)

Excluding: LIMITED, LTD, &, UK, SERVICES, THE, (UK), AND, LTD., A, LLP, SOLUTIONS, COMPANY, OF.

WORD	PERCENTAGE	UK WORD	UK PERCENTAGE
(SCOTLAND)	2.77%	CONSULTING	5.07%
SCOTLAND	1.74%	MANAGEMENT	4.74%
GLASGOW	1.67%	CONSULTANCY	3.26%
CONSULTING	1.48%	PROPERTY	2.37%
MANAGEMENT	1.47%	TRADING	2.07%
CONSULTANCY	1.38%	DESIGN	1.92%
PROPERTY	1.21%	ASSOCIATES	1.86%
TRADING	0.90%	ENGINEERING	1.78%
(GLASGOW)	0.86%	BUSINESS	1.78%
PROPERTIES	0.81%	CONSULTANTS	1.76%
ENGINEERING	0.81%	CONSTRUCTION	1.73%
ENERGY	0.81%	MEDIA	1.71%
DESIGN	0.77%	LONDON	1.63%
BUSINESS	0.74%	J	1.51%
INVESTMENTS	0.73%	INVESTMENTS	1.48%
CONSULTANTS	0.67%	GLOBAL	1.46%
CONSTRUCTION	0.65%	IT	1.41%
ENTERPRISES	0.65%	CARE	1.39%
SOLAR	0.62%	PROPERTIES	1.29%
CONTRACTS	0.62%	ELECTRICAL	1.29%
J	0.60%	M	1.27%
M	0.60%	BUILDING	1.26%
CENTRE	0.58%	ENERGY	1.25%
MEDIA	0.57%	S	1.20%
LP	0.51%	ENTERPRISES	1.20%

Previous 36 months, excluding companies less than 12 months old

SIC CODE	NUMBER OF COMPANIES	UK COMPANIES
None Supplied	3,212	205,525
7487 - Other business activities	773	57,052
82990 - Other business support service activities not elsewhere classified	446	32,483
99999 - Dormant Company	235	21,846
9999 - Dormant Company	223	20,199
70229 - Management consultancy activities other than financial management	195	17,765
62020 - Information technology consultancy activities	148	12,072
56103 - Take-away food shops and mobile food stands	145	2,264
5530 - Restaurants	144	5,013
74909 - Other professional, scientific and technical activities not elsewhere classified	133	8,671
7414 - Business & management consultancy	132	13,034
96090 - Other service activities not elsewhere classified	123	11,768
5552 - Catering	116	2,110
7260 - Other computer related activities	110	7,667
9305 - Other service activities	106	9,492
68209 - Other letting and operating of own or leased real estate	92	4,082
5540 - Bars	89	2,147
56101 - Licensed restaurants	88	2,159
62090 - Other information technology service activities	88	7,493
74990 - Non-trading company	84	8,929