

# Grantham

2012 half year business confidence report



## headlines

- The first half of 2012 saw a new record in company registrations in Grantham when compared to any previous first half year.
- June 2012 saw a new record in company registrations in Grantham when compared to any previous June.

## contents

new company registrations

closed companies (dissolved)

net company growth

uk company share

director age

director gender

naming trends

sic data

### Half Year Data (Jan-Jun 2012)

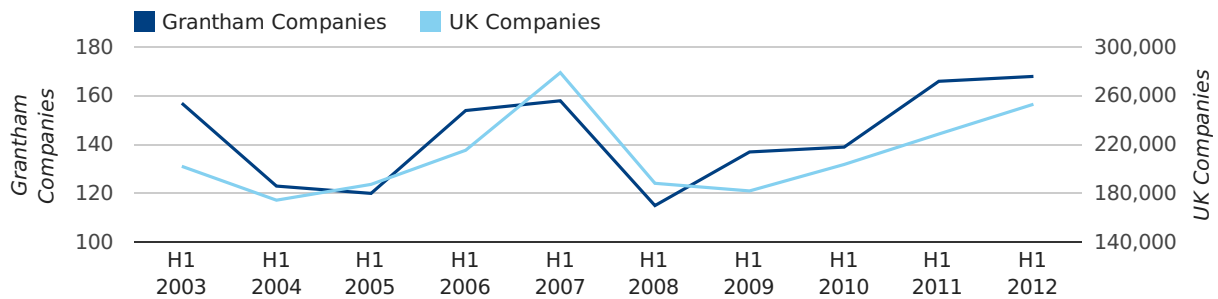
The first half of 2012 saw a new record in company registrations in Grantham when compared to any previous first half year.

In the first half of 2012 a total of 168 companies were formed in Grantham. This figure is 1.2% higher than last year, which compares badly to the UK wide figure of 10.7%.

The highest total for a first half year in Grantham occurred in 2012 when a total of 168 were formed.

HALF YEAR (JAN-JUN)	GRANTHAM	UK
2012	168	253,150
2011	166	228,735
% CHANGE	1.2%	10.7%
RECORD YEAR	2012 (168)	2007 (279,097)

### new companies by half year



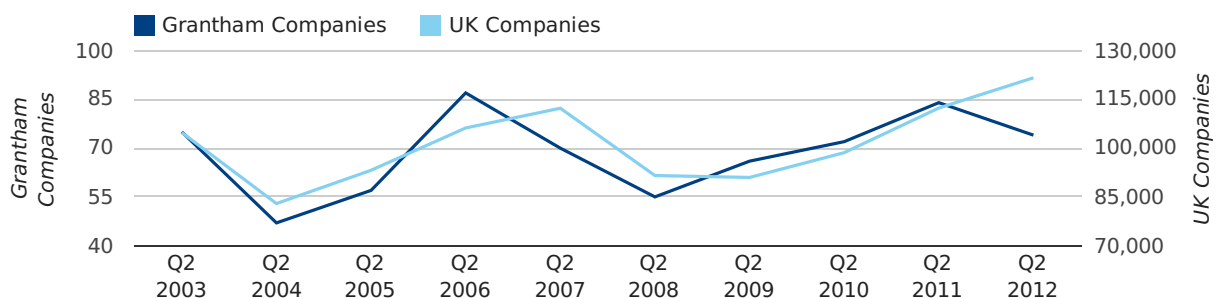
### Quarterly Data (Q2 Apr-Jun 2012)

A total of 74 companies were registered in Grantham during the second quarter of 2012 (Apr 2012 - Jun 2012).

This figure is a decrease of 11.9% versus the same period last year (Q2 2011). This figure compares badly to the UK as a whole, which saw an increase of 8.3% against the same period last year.

SECOND QUARTER (APR 2012 - JUN 2012)	GRANTHAM	UK
2012	74	121,659
2011	84	112,344
% CHANGE	-11.9%	8.3%
RECORD YEAR	2006 (87)	2012 (121,659)

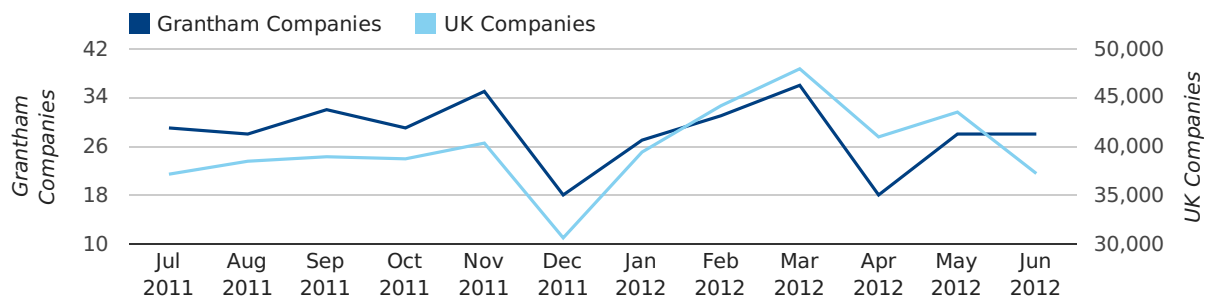
### new companies by quarter



## Monthly Data (Apr, May & Jun 2012)

June 2012 saw a new record in company registrations in Grantham when compared to any previous June.

### new companies by month



	APRIL	MAY	JUNE
NEW COMPANIES IN 2012	18	28	28
NEW COMPANIES IN 2011	29	34	21
% CHANGE	-37.9%	-17.6%	33.3%
RECORD YEAR	2011 (29)	2006 (41)	2007 (28)

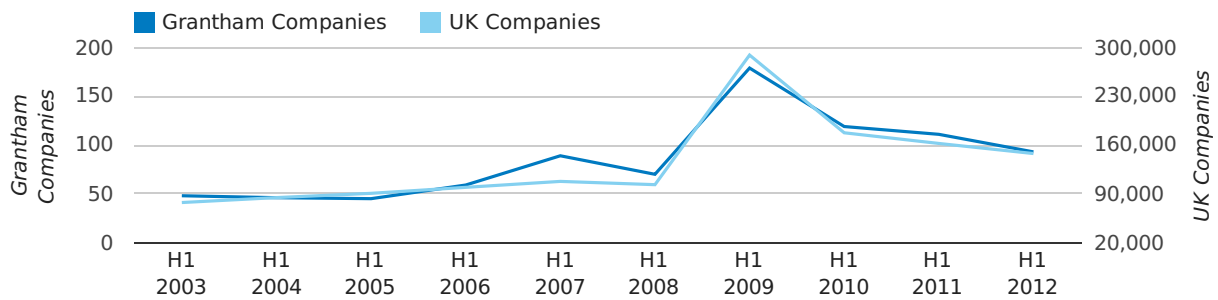
### Half Year Data (Jan-Jun 2012)

In the first half of 2012 a total of 93 companies were dissolved in Grantham. This figure is 16.2% lower than last year, which compares well to the UK wide change of -8.9%.

The highest total for a first half year in Grantham occurred in 2009 when a total of 179 were closed.

HALF YEAR (JAN-JUN)	GRANTHAM	UK
2012	93	147,793
2011	111	162,310
% CHANGE	-16.2%	-8.9%
RECORD YEAR	2009 (179)	2009 (289,236)

### dissolved companies by half year



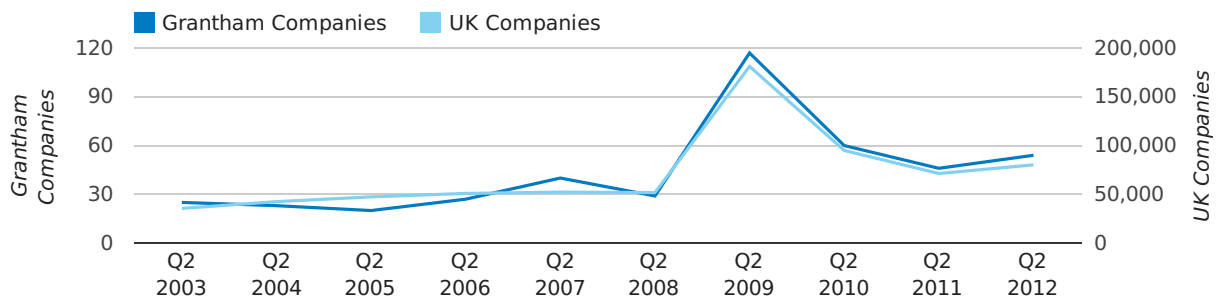
### Quarterly Data (Q2 Apr-Jun 2012)

A total of 54 companies were dissolved in Grantham during the second quarter of 2012 (Apr 2012 - Jun 2012).

This figure is an increase of 17.4% versus the same period last year (Q2 2011). This figure compares poorly to the UK as a whole, which saw an increase of 12.5% against the same period last year.

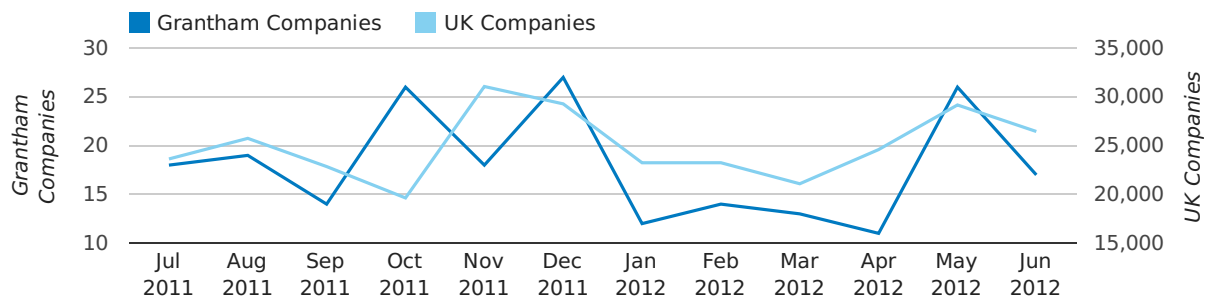
SECOND QUARTER (APR 2012 - JUN 2012)	GRANTHAM	UK
2012	54	80,217
2011	46	71,324
% CHANGE	17.4%	12.5%
RECORD YEAR	2009 (117)	2009 (181,176)

### dissolved companies by quarter



# Monthly Data (Apr, May & Jun 2012)

## dissolved companies by month



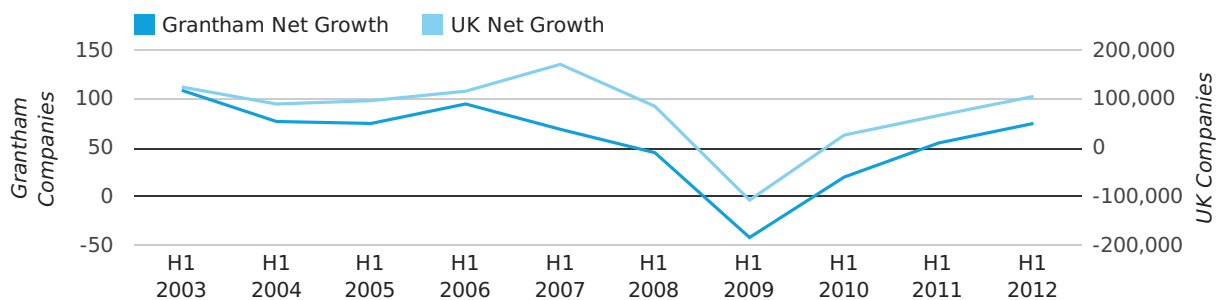
	APRIL	MAY	JUNE
CLOSED COMPANIES IN 2012	11	26	17
CLOSED COMPANIES IN 2011	9	23	14
% CHANGE	22.2%	13.0%	21%
RECORD YEAR	2009 (26)	2009 (55)	2009 (36)

### Half Year Data (Jan-Jun 2012)

In the first half of 2012 the company register for Grantham increased by 75 companies. This figure is 36.4% higher than last year, which compares badly to a UK increase of 58.6%.

HALF YEAR (JAN-JUN)	GRANTHAM	UK
2012	75	105,357
2011	55	66,425
% CHANGE	36.4%	58.6%
RECORD YEAR	2003 (109)	2007 (171,296)

### net growth by half year



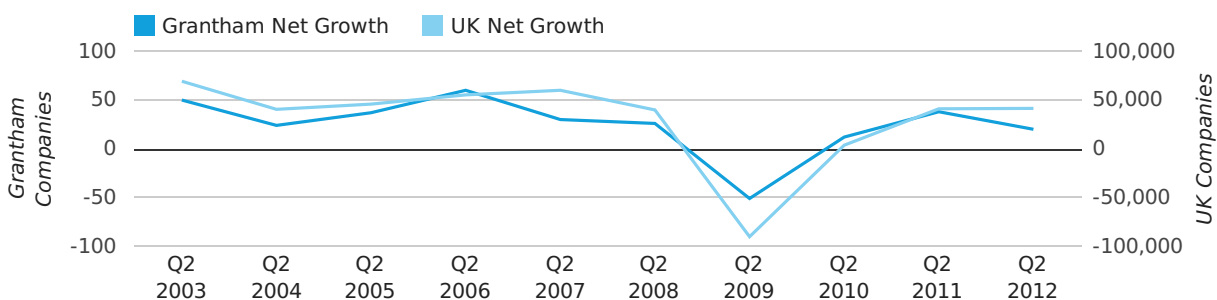
### Quarterly Data (Q2 Apr-Jun 2012)

Net company growth for Grantham during the second quarter of 2012 (Apr 2012 - Jun 2012) was 20 companies.

This represents a decrease of 47.4% on the same period last year.

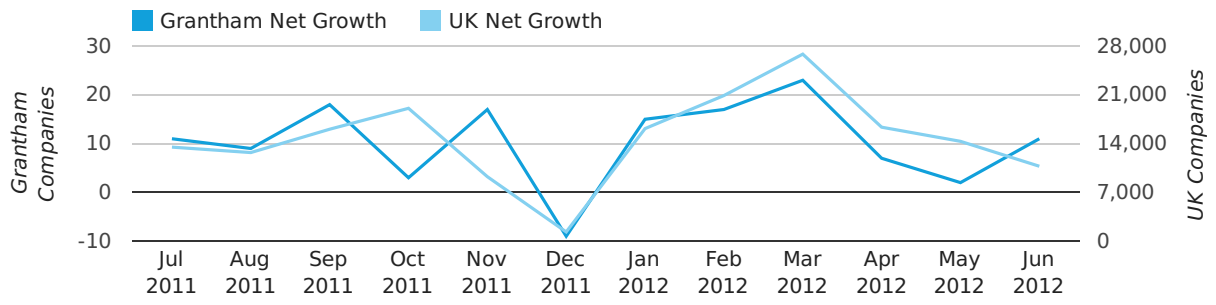
SECOND QUARTER (APR 2012 - JUN 2012)	GRANTHAM	UK
2012	20	41,442
2011	38	41,020
% CHANGE	-47.4%	1.0%
RECORD YEAR	2006 (60)	2003 (69,274)

### net growth by quarter



# Monthly Data (Apr, May & Jun 2012)

## net growth by month



	APRIL	MAY	JUNE
NET GROWTH IN 2012	7	2	11
NET GROWTH IN 2011	20	11	7
% CHANGE	-65.0%	-81.8%	57.1%
RECORD YEAR	2005 (21)	2006 (30)	2007 (17)

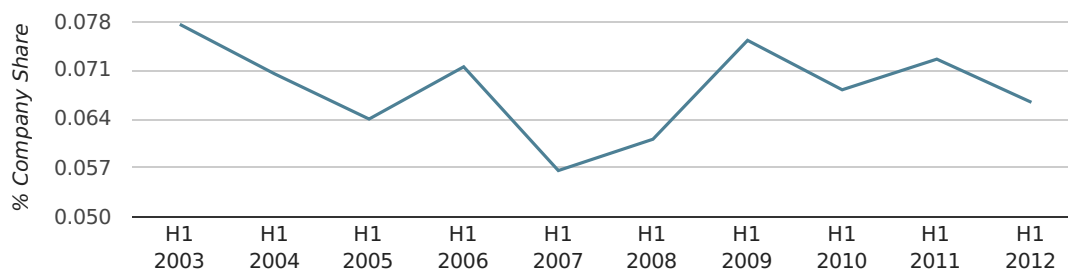


### Half Year Data (Jan-Jun 2012)

In the first half of 2012 Grantham formed 0.1% of all UK companies. This is the same as the 2011 figure of 0.1%.

HALF YEAR (JAN-JUN)	GRANTHAM
2012	0.1%
2011	0.1%
2010	0.1%
2009	0.1%
2008	0.1%
RECORD YEAR (SINCE 1960)	1975 (0.2%)

#### company share by half year

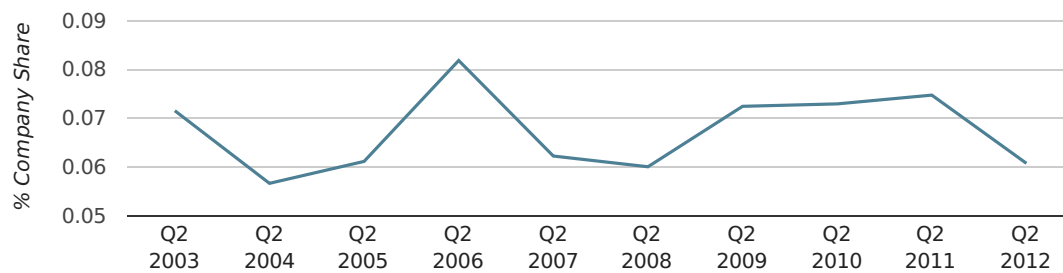


### Quarterly Data (Q2 Apr-Jun 2012)

In the second quarter of 2012, Grantham formed 0.1% of all UK companies.

SECOND QUARTER (APR 2012 - JUN 2012)	GRANTHAM
2012	0.1%
2011	0.1%
2010	0.1%
2009	0.1%
2008	0.1%
RECORD YEAR (SINCE 1960)	1971 (0.2%)

#### company share by quarter



## Monthly Data (Apr, May & Jun 2012)

### company share by month



	APRIL	MAY	JUNE
UK FORMATION SHARE IN 2012	0.0%	0.1%	0.1%
UK FORMATION SHARE IN 2011	0.1%	0.1%	0.1%
% CHANGE	-47.8%	-27.8%	42.3%
RECORD YEAR	1973 (0.2%)	1971 (0.3%)	1970 (0.3%)

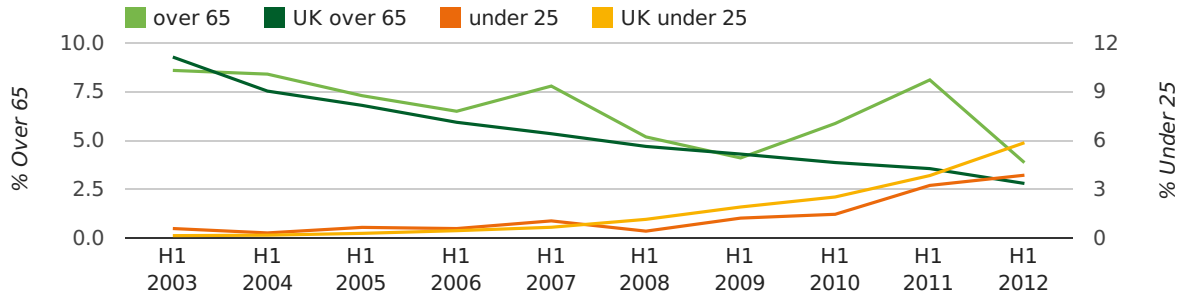
### Half Year Data (Jan-Jun 2012)

The average age of a director in the first half of 2012 was 45.0.

The percentage of directors under the age of 25 was 3.9% compared to the UK figure of 4.9%.

The percentage of directors over the age of 65 was 3.9% compared to the UK figure of 3.4%.

#### director age by half year



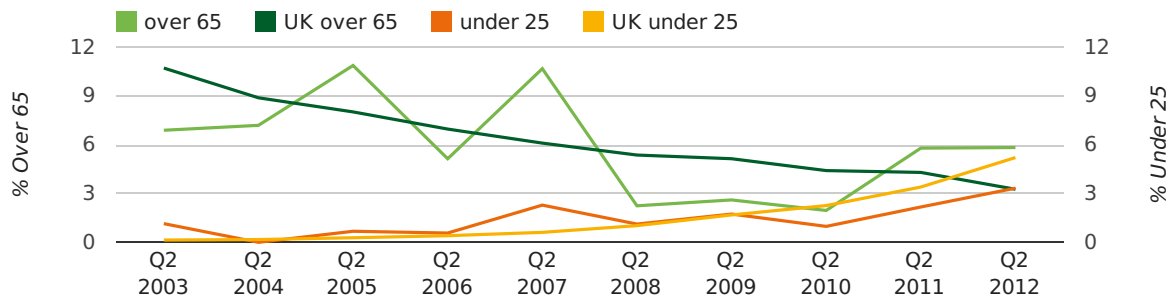
### Quarterly Data (Q2 Apr-Jun 2012)

The average age of a director in the second quarter of 2012 was 46.9.

The percentage of directors under the age of 25 was 3.3% compared to the UK figure of 5.2%.

The percentage of directors over the age of 65 was 5.8% compared to the UK figure of 3.3%.

#### director age by quarter

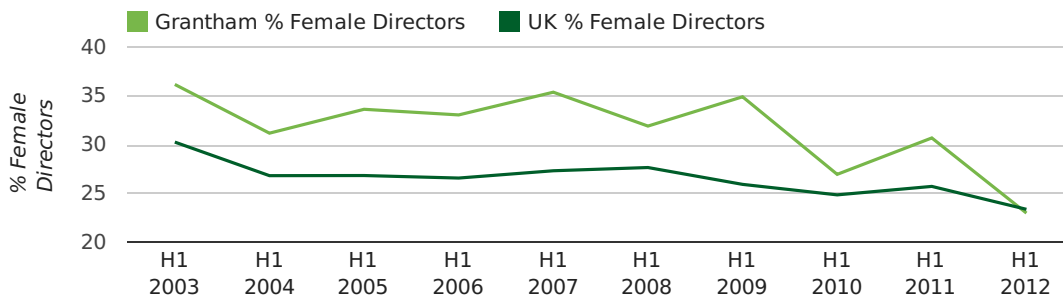


### Half Year Data (Jan-Jun 2012)

The record first half year for female directors in Grantham was 1861 when 40.0% of all directors were female.

23.0% of all director appointments in Grantham in the first half of 2012 were female. This compares to a UK average of 23.4% for the same period.

#### director gender by half year

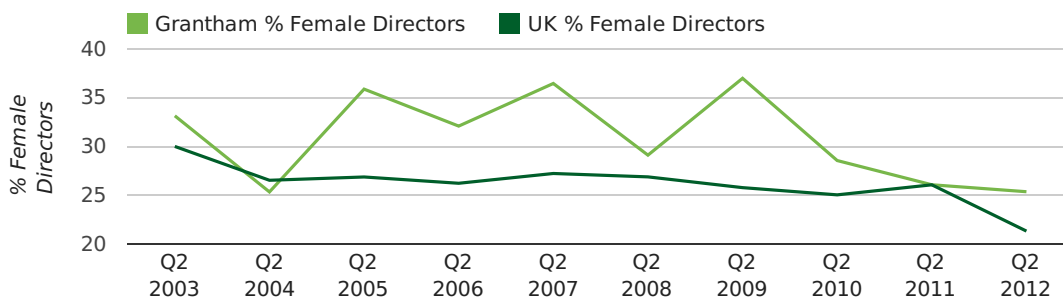


### Quarterly Data (Q2 Apr-Jun 2012)

The record second quarter for female directors in Grantham was in 1866 when 66.7% of all directors were female.

25.4% of all director appointments in Grantham in the second quarter of 2012 were female. This compares to a UK average of 21.3% for the same period.

#### director gender by quarter



## Previous 12 months (Jun 2011-Jun 2012)

Excluding: LIMITED, LTD, &, UK, SERVICES, THE, (UK), AND, LTD., A, LLP, SOLUTIONS, COMPANY, OF.

WORD	PERCENTAGE	UK WORD	UK PERCENTAGE
MANAGEMENT	1.61%	CONSULTING	5.07%
GRANTHAM	1.13%	MANAGEMENT	4.74%
BUSINESS	1.13%	CONSULTANCY	3.28%
TRUSTED	0.97%	PROPERTY	2.35%
MEDIA	0.81%	TRADING	2.10%
BELVOIR	0.81%	DESIGN	1.89%
J	0.81%	ENGINEERING	1.87%
LIVING	0.81%	ASSOCIATES	1.82%
CONSULTING	0.81%	CONSULTANTS	1.78%
(NO.	0.65%	CONSTRUCTION	1.71%
FIDENTIA	0.65%	BUSINESS	1.70%
CONSULTANCY	0.65%	MEDIA	1.69%
CENTRE	0.65%	LONDON	1.68%
CONSTRUCTION	0.65%	J	1.57%
SCHOOL	0.65%	GLOBAL	1.51%
TRANS	0.65%	INVESTMENTS	1.48%
INTERIORS	0.65%	IT	1.42%
TRANSPORT	0.65%	CARE	1.31%
PROPERTY	0.65%	PROPERTIES	1.31%
(GRANTHAM)	0.65%	M	1.26%
WITH	0.48%	ELECTRICAL	1.23%
AUTISM	0.48%	BUILDING	1.23%
ENGINEERING	0.48%	SECURITY	1.19%
NEWS	0.48%	S	1.18%
CO	0.48%	ENTERPRISES	1.17%

## Previous 36 months, excluding companies less than 12 months old

SIC CODE	NUMBER OF COMPANIES	UK COMPANIES
None Supplied	157	244,457
65120 - Non-life insurance	31	388
99999 - Dormant Company	30	26,088
7487 - Other business activities	27	47,029
70229 - Management consultancy activities other than financial management	19	20,390
41100 - Development of building projects	18	5,149
74990 - Non-trading company	13	9,706
9999 - Dormant Company	13	16,469
82990 - Other business support service activities not elsewhere classified	11	35,447
7414 - Business & management consultancy	9	10,978
96090 - Other service activities not elsewhere classified	8	14,220
62020 - Information technology consultancy activities	7	15,280
9305 - Other service activities	7	7,926
7499 - Non-trading company	7	8,023
45200 - Maintenance and repair of motor vehicles	7	2,880
5530 - Restaurants	6	4,037
47910 - Retail sale via mail order houses or via Internet	6	3,818
74909 - Other professional, scientific and technical activities not elsewhere classified	6	10,271
62090 - Other information technology service activities	5	8,258
5540 - Bars	5	1,709