

Hatfield

2012 half year business confidence report



headlines

- The first half of 2012 saw a new record in company registrations in Hatfield when compared to any previous first half year.
- The first half of 2012 was a record first half year for company registrations in Hatfield when compared to any half year in history.
- Q2 2012 saw a new record in company registrations in Hatfield when compared to any previous Q2.
- Q2 2012 was a record quarter for company registrations in Hatfield when compared to any quarter in history.
- April 2012 saw a new record in company registrations in Hatfield when compared to any previous April.
- April 2012 was a record month for company registrations in Hatfield when compared to any month in history.
- April 2012 saw a new record in net growth in Hatfield when compared to any previous April.

contents

new company registrations

closed companies (dissolved)

net company growth

uk company share

director age

director gender

naming trends

sic data

Half Year Data (Jan-Jun 2012)

The first half of 2012 saw a new record in company registrations in Hatfield when compared to any previous first half year.

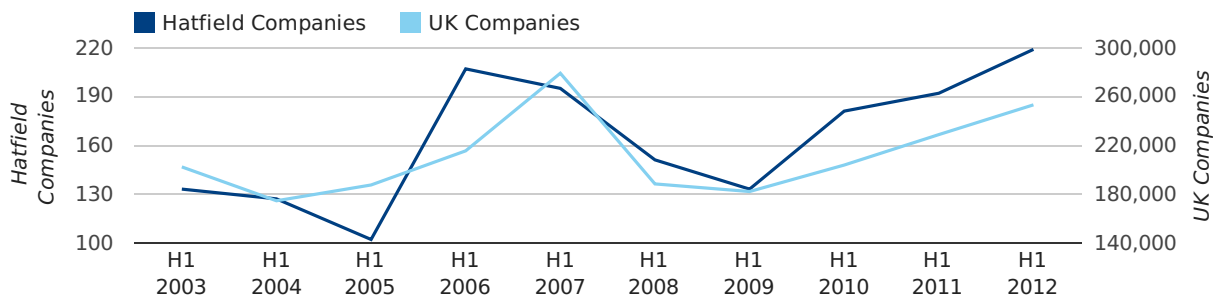
The first half of 2012 was a record first half year for company registrations in Hatfield when compared to any half year in history.

In the first half of 2012 a total of 219 companies were formed in Hatfield. This figure is 14.1% higher than last year, which compares well to the UK wide figure of 10.7%.

The highest total for a first half year in Hatfield occurred in 2012 when a total of 219 were formed.

HALF YEAR (JAN-JUN)	HATFIELD	UK
2012	219	253,150
2011	192	228,735
% CHANGE	14.1%	10.7%
RECORD YEAR	2012 (219)	2007 (279,097)

new companies by half year



Quarterly Data (Q2 Apr-Jun 2012)

Q2 2012 saw a new record in company registrations in Hatfield when compared to any previous Q2.

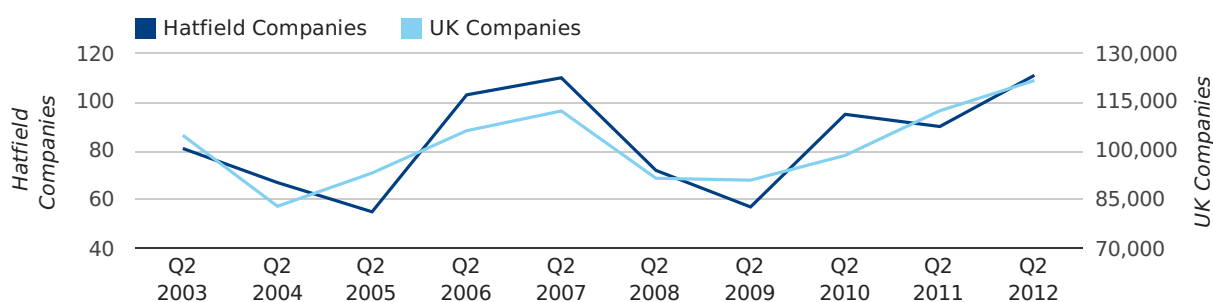
Q2 2012 was a record quarter for company registrations in Hatfield when compared to any quarter in history.

A total of 111 companies were registered in Hatfield during the second quarter of 2012 (Apr 2012 - Jun 2012).

This figure is an increase of 23.3% versus the same period last year (Q2 2011). This figure compares well to the UK as a whole, which saw an increase of 8.3% against the same period last year.

SECOND QUARTER (APR 2012 - JUN 2012)	HATFIELD	UK
2012	111	121,659
2011	90	112,344
% CHANGE	23.3%	8.3%
RECORD YEAR	2012 (111)	2012 (121,659)

new companies by quarter



Monthly Data (Apr, May & Jun 2012)

April 2012 saw a new record in company registrations in Hatfield when compared to any previous April.

April 2012 was a record month for company registrations in Hatfield when compared to any month in history.

new companies by month



	APRIL	MAY	JUNE
NEW COMPANIES IN 2012	50	32	29
NEW COMPANIES IN 2011	26	32	32
% CHANGE	92.3%	0.0%	-9.4%
RECORD YEAR	2012 (50)	2010 (36)	2006 (40)

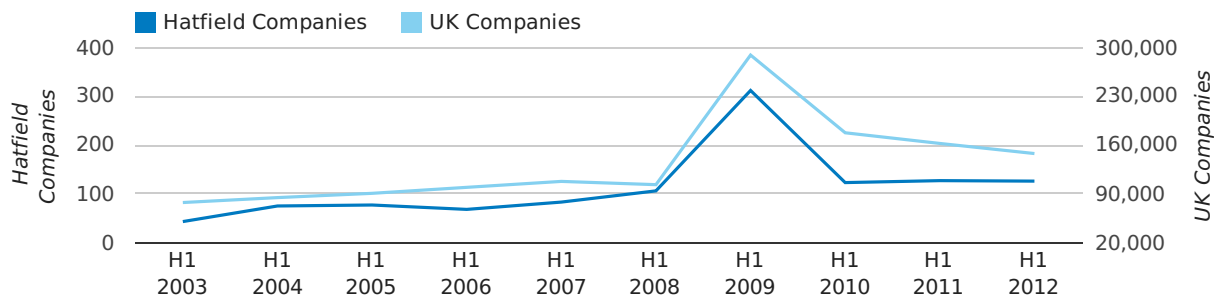
Half Year Data (Jan-Jun 2012)

In the first half of 2012 a total of 126 companies were dissolved in Hatfield. This figure is 0.8% lower than last year, which compares badly to the UK wide change of -8.9%.

The highest total for a first half year in Hatfield occurred in 2009 when a total of 312 were closed.

HALF YEAR (JAN-JUN)	HATFIELD	UK
2012	126	147,793
2011	127	162,310
% CHANGE	-0.8%	-8.9%
RECORD YEAR	2009 (312)	2009 (289,236)

dissolved companies by half year



Quarterly Data (Q2 Apr-Jun 2012)

A total of 66 companies were dissolved in Hatfield during the second quarter of 2012 (Apr 2012 - Jun 2012).

This figure is an increase of 0.0% versus the same period last year (Q2 2011). This figure compares well to the UK as a whole, which saw an increase of 12.5% against the same period last year.

SECOND QUARTER (APR 2012 - JUN 2012)	HATFIELD	UK
2012	66	80,217
2011	66	71,324
% CHANGE	0.0%	12.5%
RECORD YEAR	2009 (148)	2009 (181,176)

dissolved companies by quarter



Monthly Data (Apr, May & Jun 2012)

dissolved companies by month



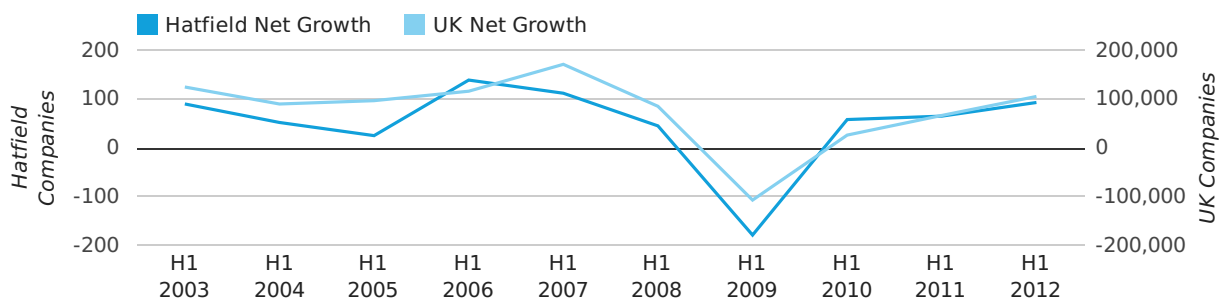
	APRIL	MAY	JUNE
CLOSED COMPANIES IN 2012	17	23	26
CLOSED COMPANIES IN 2011	14	25	27
% CHANGE	21.4%	-8.0%	-4%
RECORD YEAR	2009 (45)	2009 (69)	2009 (34)

Half Year Data (Jan-Jun 2012)

In the first half of 2012 the company register for Hatfield increased by 93 companies. This figure is 43.1% higher than last year, which compares badly to a UK increase of 58.6%.

HALF YEAR (JAN-JUN)	HATFIELD	UK
2012	93	105,357
2011	65	66,425
% CHANGE	43.1%	58.6%
RECORD YEAR	2006 (139)	2007 (171,296)

net growth by half year



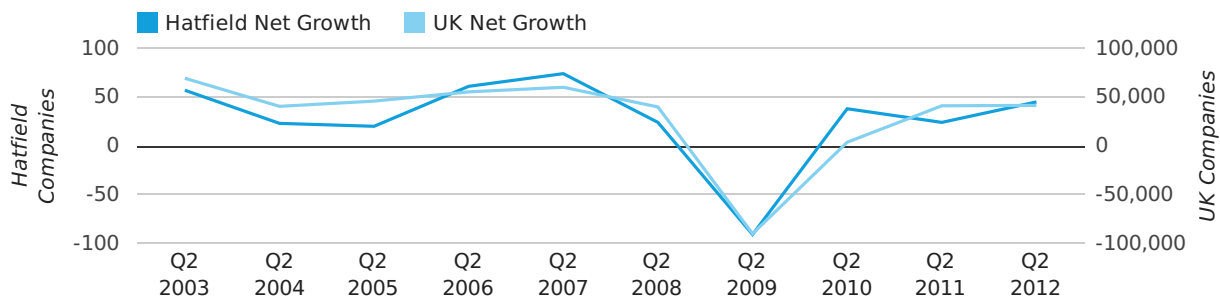
Quarterly Data (Q2 Apr-Jun 2012)

Net company growth for Hatfield during the second quarter of 2012 (Apr 2012 - Jun 2012) was 45 companies.

This represents an increase of 87.5% on the same period last year.

SECOND QUARTER (APR 2012 - JUN 2012)	HATFIELD	UK
2012	45	41,442
2011	24	41,020
% CHANGE	87.5%	1.0%
RECORD YEAR	2007 (74)	2003 (69,274)

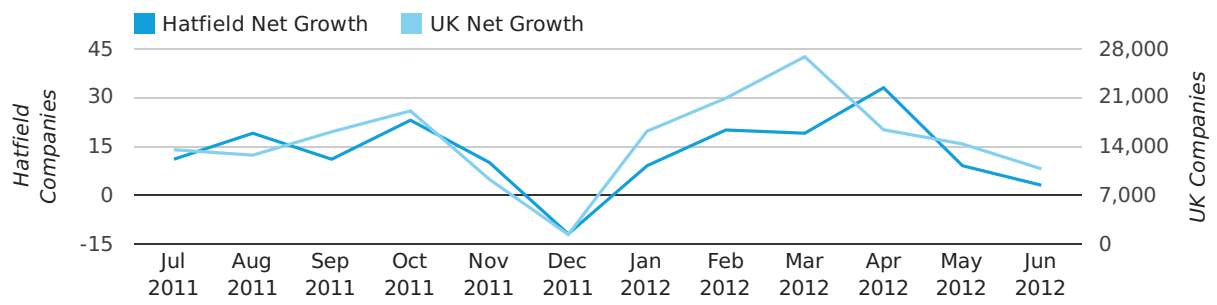
net growth by quarter



Monthly Data (Apr, May & Jun 2012)

April 2012 saw a new record in net growth in Hatfield when compared to any previous April.

net growth by month



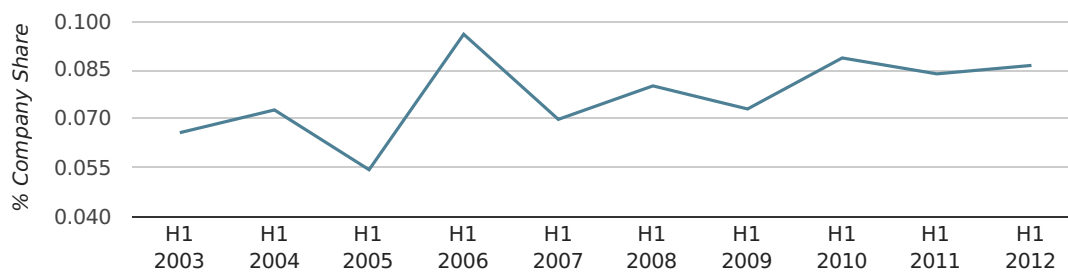
	APRIL	MAY	JUNE
NET GROWTH IN 2012	33	9	3
NET GROWTH IN 2011	12	7	5
% CHANGE	175.0%	28.6%	-40.0%
RECORD YEAR	2007 (33)	2006 (25)	2006 (27)

Half Year Data (Jan-Jun 2012)

In the first half of 2012 Hatfield formed 0.1% of all UK companies. This is the same as the 2011 figure of 0.1%.

HALF YEAR (JAN-JUN)	HATFIELD
2012	0.1%
2011	0.1%
2010	0.1%
2009	0.1%
2008	0.1%
RECORD YEAR (SINCE 1960)	1969 (0.2%)

company share by half year

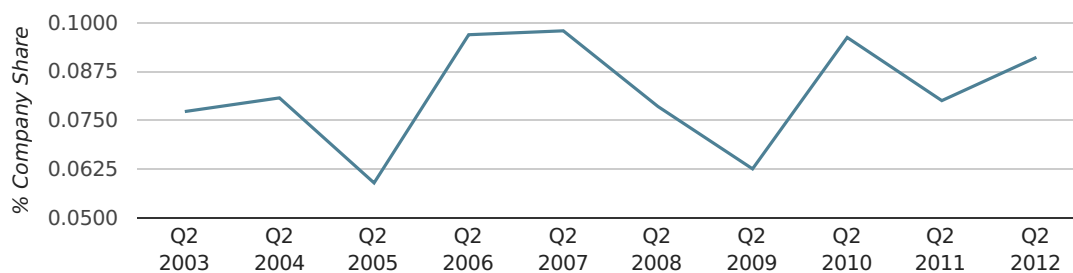


Quarterly Data (Q2 Apr-Jun 2012)

In the second quarter of 2012, Hatfield formed 0.1% of all UK companies.

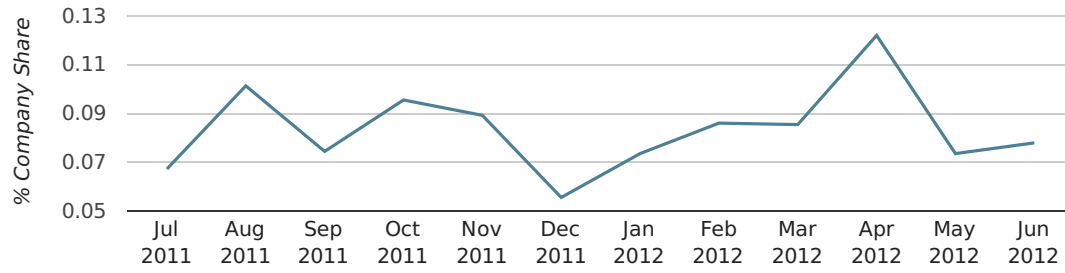
SECOND QUARTER (APR 2012 - JUN 2012)	HATFIELD
2012	0.1%
2011	0.1%
2010	0.1%
2009	0.1%
2008	0.1%
RECORD YEAR (SINCE 1960)	1977 (0.2%)

company share by quarter



Monthly Data (Apr, May & Jun 2012)

company share by month



	APRIL	MAY	JUNE
UK FORMATION SHARE IN 2012	0.1%	0.1%	0.1%
UK FORMATION SHARE IN 2011	0.1%	0.1%	0.1%
% CHANGE	61.9%	-12.3%	-3.2%
RECORD YEAR	1974 (0.3%)	1961 (0.5%)	1969 (0.4%)

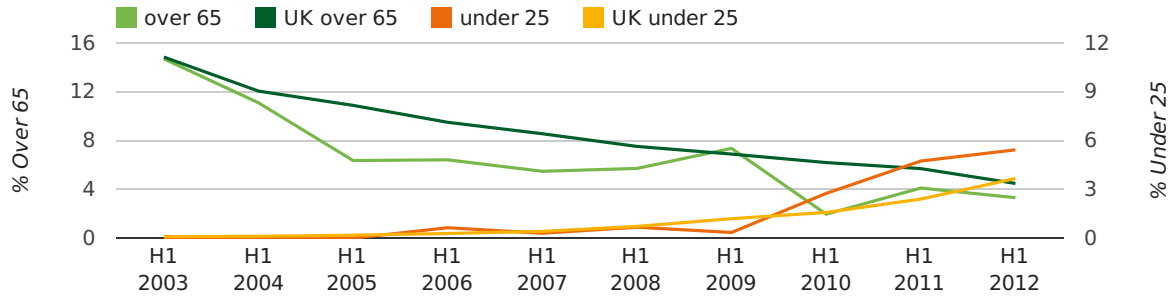
Half Year Data (Jan-Jun 2012)

The average age of a director in the first half of 2012 was 41.2.

The percentage of directors under the age of 25 was 5.4% compared to the UK figure of 4.9%.

The percentage of directors over the age of 65 was 3.3% compared to the UK figure of 3.4%.

director age by half year



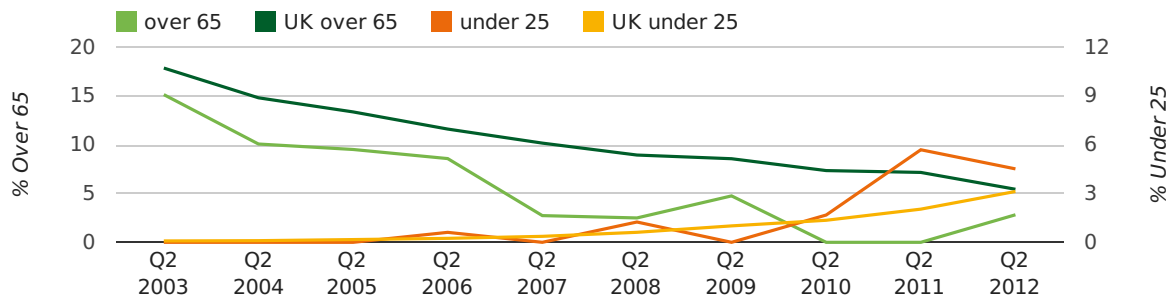
Quarterly Data (Q2 Apr-Jun 2012)

The average age of a director in the second quarter of 2012 was 39.9.

The percentage of directors under the age of 25 was 4.5% compared to the UK figure of 5.2%.

The percentage of directors over the age of 65 was 2.8% compared to the UK figure of 3.3%.

director age by quarter

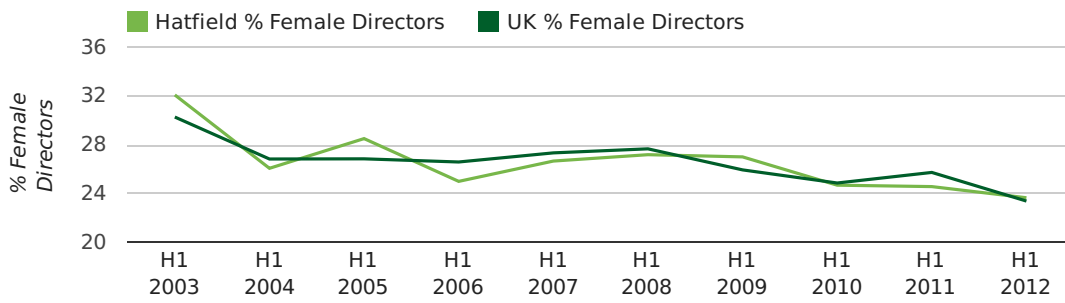


Half Year Data (Jan-Jun 2012)

The record first half year for female directors in Hatfield was 1861 when 40.0% of all directors were female.

23.7% of all director appointments in Hatfield in the first half of 2012 were female. This compares to a UK average of 23.4% for the same period.

director gender by half year

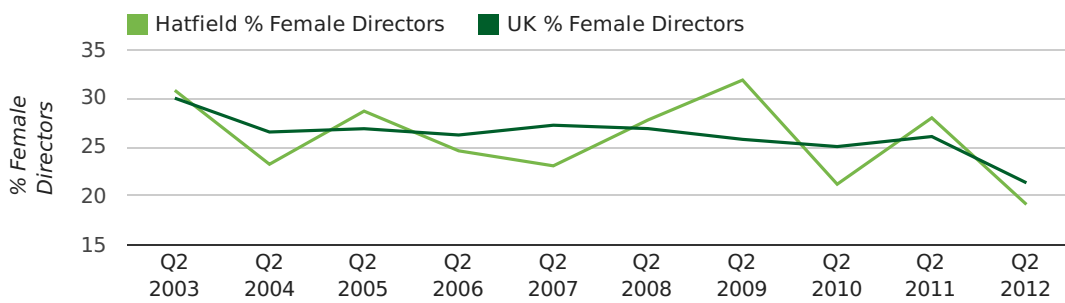


Quarterly Data (Q2 Apr-Jun 2012)

The record second quarter for female directors in Hatfield was in 1866 when 66.7% of all directors were female.

19.1% of all director appointments in Hatfield in the second quarter of 2012 were female. This compares to a UK average of 21.3% for the same period.

director gender by quarter



Previous 12 months (Jun 2011-Jun 2012)

Excluding: LIMITED, LTD, &, UK, SERVICES, THE, (UK), AND, LTD., A, LLP, SOLUTIONS, COMPANY, OF.

WORD	PERCENTAGE	UK WORD	UK PERCENTAGE
MANAGEMENT	1.88%	CONSULTING	5.07%
TECH	1.45%	MANAGEMENT	4.74%
IT	1.45%	CONSULTANCY	3.28%
HATFIELD	1.01%	PROPERTY	2.35%
HERTS	0.87%	TRADING	2.10%
CONSULTANTS	0.87%	DESIGN	1.89%
CONSULTING	0.87%	ENGINEERING	1.87%
PROJECT	0.87%	ASSOCIATES	1.82%
CONSULTANCY	0.87%	CONSULTANTS	1.78%
FOCUS	0.72%	CONSTRUCTION	1.71%
LONDON	0.72%	BUSINESS	1.70%
CARE	0.72%	MEDIA	1.69%
ASSOCIATES	0.72%	LONDON	1.68%
ENTERPRISE	0.72%	J	1.57%
TRANSPORT	0.72%	GLOBAL	1.51%
COMPUTER	0.72%	INVESTMENTS	1.48%
INVESTMENTS	0.58%	IT	1.42%
HOTELS	0.58%	CARE	1.31%
GLOBAL	0.58%	PROPERTIES	1.31%
ELECTRICAL	0.58%	M	1.26%
JALK	0.43%	ELECTRICAL	1.23%
INTERIORS	0.43%	BUILDING	1.23%
PROPERTY	0.43%	SECURITY	1.19%
FINANCIAL	0.43%	S	1.18%
CONTRACTORS	0.43%	ENTERPRISES	1.17%

Previous 36 months, excluding companies less than 12 months old

SIC CODE	NUMBER OF COMPANIES	UK COMPANIES
None Supplied	201	244,457
7487 - Other business activities	31	47,029
96090 - Other service activities not elsewhere classified	25	14,220
70229 - Management consultancy activities other than financial management	23	20,390
82990 - Other business support service activities not elsewhere classified	21	35,447
99999 - Dormant Company	16	26,088
49410 - Freight transport by road	13	2,912
7414 - Business & management consultancy	12	10,978
62020 - Information technology consultancy activities	11	15,280
62090 - Other information technology service activities	10	8,258
9305 - Other service activities	10	7,926
74990 - Non-trading company	9	9,706
74909 - Other professional, scientific and technical activities not elsewhere classified	9	10,271
7499 - Non-trading company	9	8,023
9999 - Dormant Company	9	16,469
69201 - Accounting and auditing activities	8	4,295
6024 - Freight transport by road	8	1,933
62012 - Business and domestic software development	7	4,742
7222 - Other software consultancy and supply	6	6,356
86900 - Other human health activities	5	5,222