

Hertford

q3 2011 business confidence report



headlines

- Q3 2011 saw a new record in company registrations in Hertford when compared to any previous Q3.
- September 2011 saw a new record in company registrations in Hertford when compared to any previous September.
- August 2011 saw a new record in company registrations in Hertford when compared to any previous August.
- August 2011 saw a new record in net growth in Hertford when compared to any previous August.

contents

new company registrations

closed companies (dissolved)

net company growth

uk company share

director age

director gender

naming trends

sic data

Quarterly Data (Q3 Jul-Sep 2011)

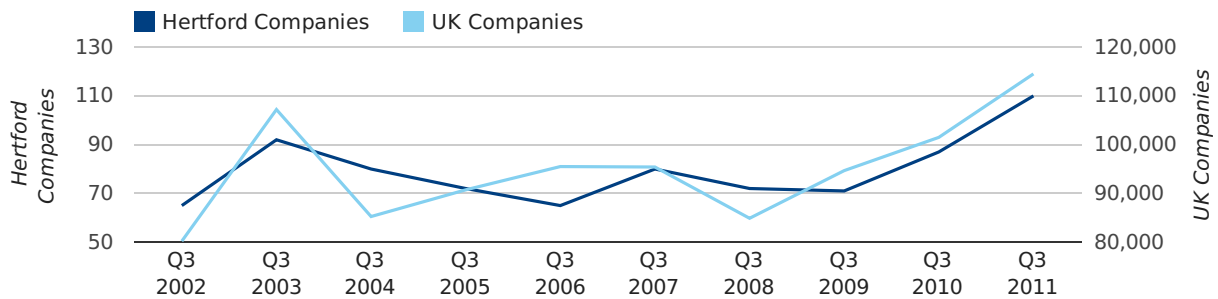
Q3 2011 saw a new record in company registrations in Hertford when compared to any previous Q3.

A total of 110 companies were registered in Hertford during the third quarter of 2011 (Jul 2011 - Sep 2011).

This figure is an increase of 26.4% versus the same period last year (Q3 2010). This figure compares well to the UK as a whole, which saw an increase of 12.8% against the same period last year.

THIRD QUARTER (JUL 2011 - SEP 2011)	HERTFORD	UK
2011	110	114,512
2010	87	101,492
% CHANGE	26.4%	12.8%
RECORD YEAR	2011 (110)	2011 (114,512)

new companies by quarter

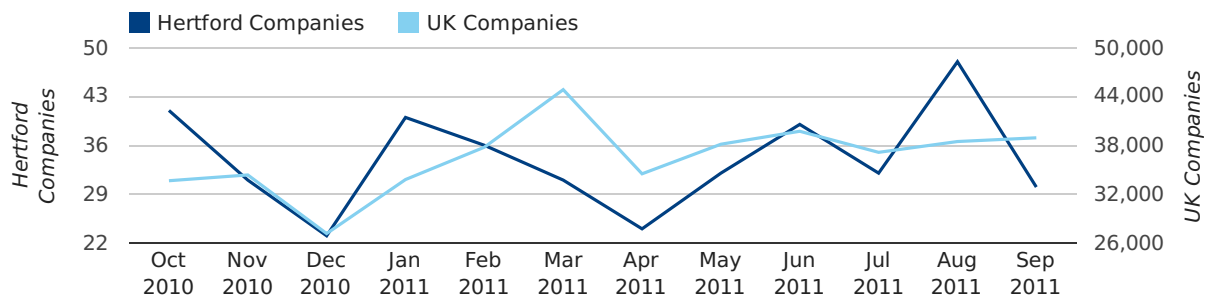


Monthly Data (Jul, Aug & Sep 2011)

September 2011 saw a new record in company registrations in Hertford when compared to any previous September.

August 2011 saw a new record in company registrations in Hertford when compared to any previous August.

new companies by month



	JULY	AUGUST	SEPTEMBER
NEW COMPANIES IN 2011	32	48	30
NEW COMPANIES IN 2010	35	28	24
% CHANGE	-8.6%	71.4%	25.0%
RECORD YEAR	2003 (40)	2011 (48)	2011 (30)

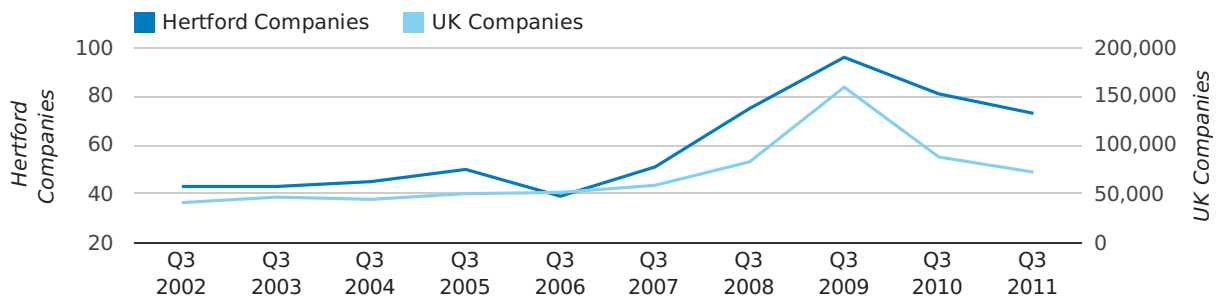
Quarterly Data (Q3 Jul-Sep 2011)

A total of 73 companies were dissolved in Hertford during the third quarter of 2011 (Jul 2011 - Sep 2011).

This figure is a decrease of 9.9% versus the same period last year (Q3 2010). This figure compares poorly to the UK as a whole, which saw a decrease of 17.6% against the same period last year.

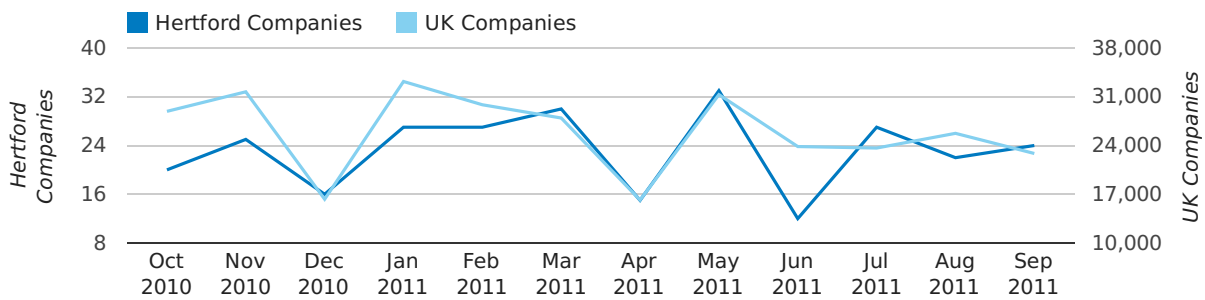
THIRD QUARTER (JUL 2011 - SEP 2011)	HERTFORD	UK
2011	73	72,230
2010	81	87,705
% CHANGE	-9.9%	-17.6%
RECORD YEAR	2009 (96)	2009 (159,401)

dissolved companies by quarter



Monthly Data (Jul, Aug & Sep 2011)

dissolved companies by month



	JULY	AUGUST	SEPTEMBER
CLOSED COMPANIES IN 2011	27	22	24
CLOSED COMPANIES IN 2010	24	40	17
% CHANGE	12.5%	-45.0%	41%
RECORD YEAR	2009 (31)	2008 (57)	2009 (47)

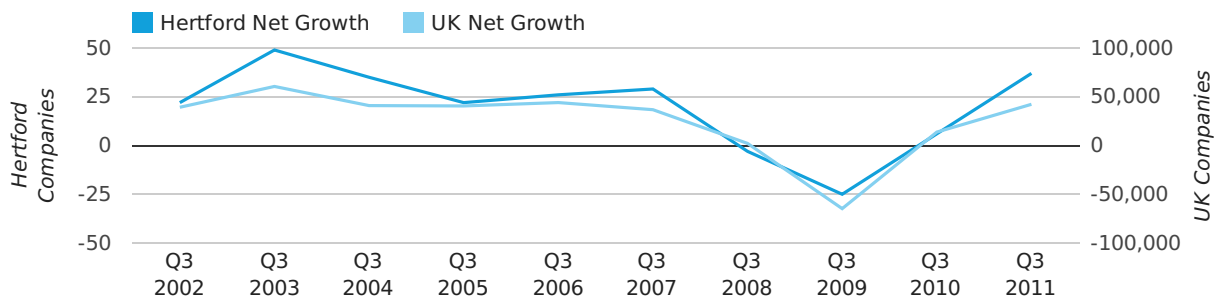
Quarterly Data (Q3 Jul-Sep 2011)

Net company growth for Hertford during the third quarter of 2011 (Jul 2011 - Sep 2011) was 37 companies.

This represents an increase of 516.7% on the same period last year.

THIRD QUARTER (JUL 2011 - SEP 2011)	HERTFORD	UK
2011	37	42,282
2010	6	13,787
% CHANGE	516.7%	206.7%
RECORD YEAR	2003 (49)	2003 (60,597)

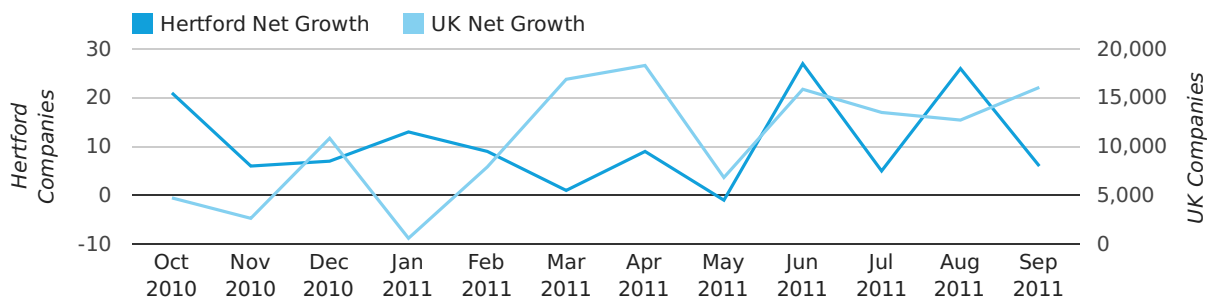
net growth by quarter



Monthly Data (Jul, Aug & Sep 2011)

August 2011 saw a new record in net growth in Hertford when compared to any previous August.

net growth by month



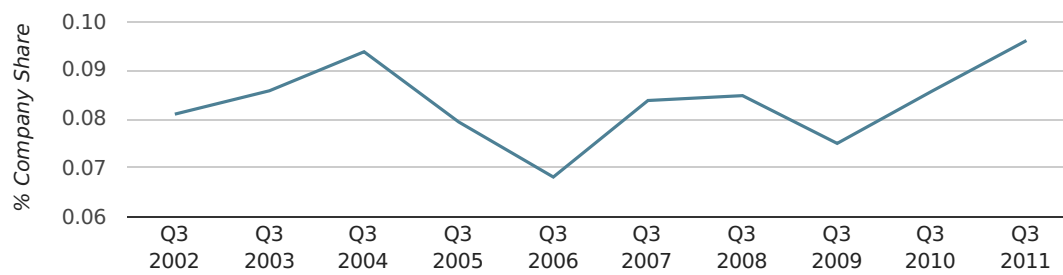
	JULY	AUGUST	SEPTEMBER
NET GROWTH IN 2011	5	26	6
NET GROWTH IN 2010	11	-12	7
% CHANGE	-54.5%	-316.7%	-14.3%
RECORD YEAR	2008 (21)	2011 (26)	2002 (21)

Quarterly Data (Q3 Jul-Sep 2011)

In the third quarter of 2011, Hertford formed 0.1% of all UK companies.

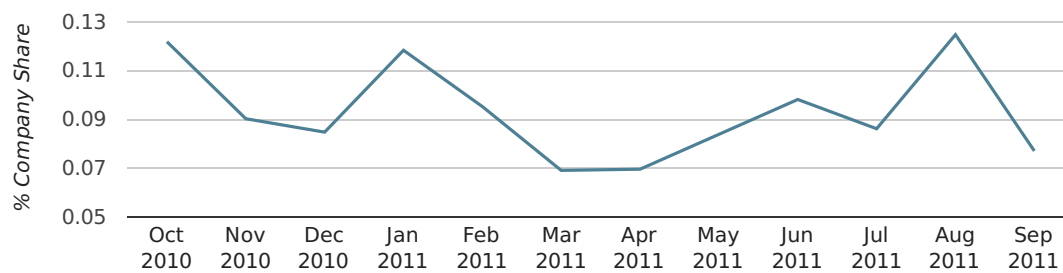
THIRD QUARTER (JUL 2011 - SEP 2011)	HERTFORD
2011	0.1%
2010	0.1%
2009	0.1%
2008	0.1%
2007	0.1%
RECORD YEAR (SINCE 1960)	1968 (0.2%)

company share by quarter



Monthly Data (Jul, Aug & Sep 2011)

company share by month



	JULY	AUGUST	SEPTEMBER
UK FORMATION SHARE IN 2011	0.1%	0.1%	0.1%
UK FORMATION SHARE IN 2010	0.1%	0.1%	0.1%
% CHANGE	-16.3%	44.3%	12.9%
RECORD YEAR	1969 (0.4%)	1985 (0.3%)	1968 (0.5%)

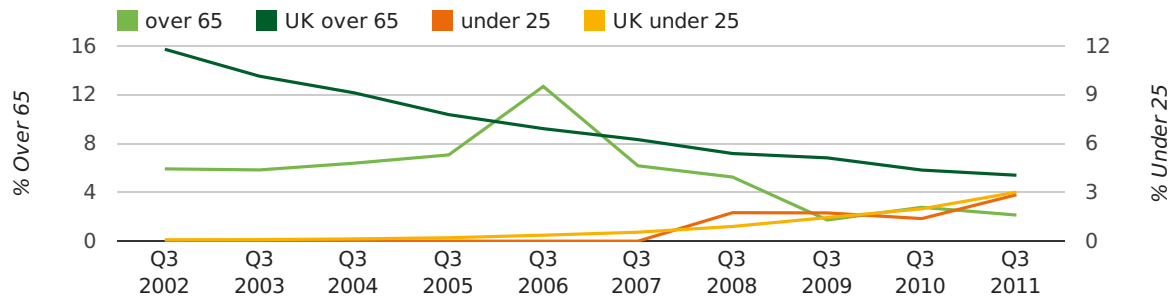
Quarterly Data (Q3 Jul-Sep 2011)

The average age of a director in the third quarter of 2011 was 44.0.

The percentage of directors under the age of 25 was 2.9% compared to the UK figure of 4.0%.

The percentage of directors over the age of 65 was 2.1% compared to the UK figure of 4.1%.

director age by quarter

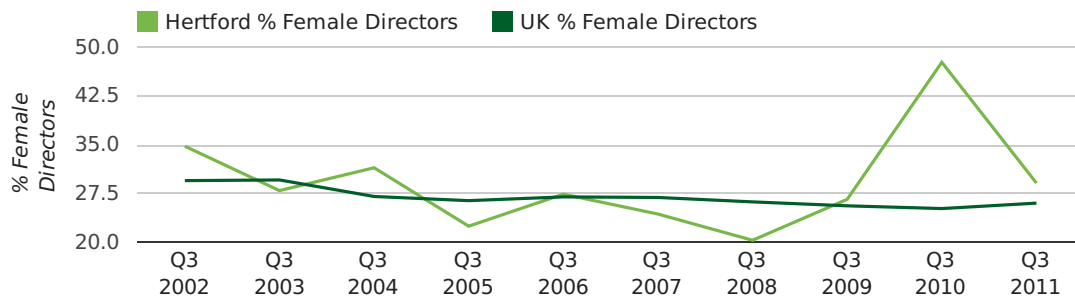


Quarterly Data (Q3 Jul-Sep 2011)

The record third quarter for female directors in Hertford was in 1862 when 50.0% of all directors were female.

29.1% of all director appointments in Hertford in the third quarter of 2011 were female. This compares to a UK average of 26.0% for the same period.

director gender by quarter



Previous 12 months (Sep 2010-Sep 2011)

Excluding: LIMITED, LTD, &, UK, SERVICES, THE, (UK), AND, LTD., A, LLP, SOLUTIONS, COMPANY, OF.

WORD	PERCENTAGE	UK WORD	UK PERCENTAGE
MANAGEMENT	1.77%	CONSULTING	5.11%
RTM	1.36%	MANAGEMENT	4.75%
HERTFORD	1.23%	CONSULTANCY	3.19%
CONSTRUCTION	0.95%	PROPERTY	2.41%
CONSULTING	0.95%	TRADING	2.06%
PROPERTY	0.95%	DESIGN	1.94%
J	0.82%	ASSOCIATES	1.85%
CONSULTANCY	0.82%	BUSINESS	1.82%
LONDON	0.82%	CONSULTANTS	1.76%
CARE	0.68%	ENGINEERING	1.74%
MEDIA	0.68%	MEDIA	1.72%
PALLET	0.55%	CONSTRUCTION	1.72%
TRADING	0.55%	LONDON	1.63%
HOUSE	0.55%	J	1.47%
RIGHTSHOT	0.55%	GLOBAL	1.46%
W	0.55%	INVESTMENTS	1.43%
ASSOCIATES	0.55%	CARE	1.42%
ELECTRICAL	0.41%	IT	1.38%
SALONS	0.41%	BUILDING	1.30%
A.	0.41%	PROPERTIES	1.28%
JONES	0.41%	ELECTRICAL	1.27%
SALES	0.41%	M	1.25%
GROUP	0.41%	ENERGY	1.22%
BUILDERS	0.41%	TRAINING	1.21%
BUILDING	0.41%	S	1.21%

Previous 36 months, excluding companies less than 12 months old

SIC CODE	NUMBER OF COMPANIES	UK COMPANIES
None Supplied	132	204,493
7487 - Other business activities	65	65,177
82990 - Other business support service activities not elsewhere classified	41	29,245
7414 - Business & management consultancy	20	14,755
98000 - Residents property management	19	2,664
70229 - Management consultancy activities other than financial management	16	15,760
4545 - Other building completion	12	2,731
9305 - Other service activities	11	10,525
62090 - Other information technology service activities	10	6,798
99999 - Dormant Company	10	18,281
9999 - Dormant Company	8	22,587
9800 - Residents Property Management	7	1,676
68209 - Other letting and operating of own or leased real estate	7	3,614
45200 - Maintenance and repair of motor vehicles	6	2,179
7499 - Non-trading company	6	11,543
43220 - Plumbing, heat and air-conditioning installation	6	2,134
4525 - Other special trades construction	6	1,865
68310 - Real estate agencies	6	1,824
7260 - Other computer related activities	6	8,686
74909 - Other professional, scientific and technical activities not elsewhere classified	6	7,551