

High Peak

2011 annual business confidence report



contents

new company registrations

closed companies (dissolved)

net company growth

uk company share

director age

director gender

naming trends

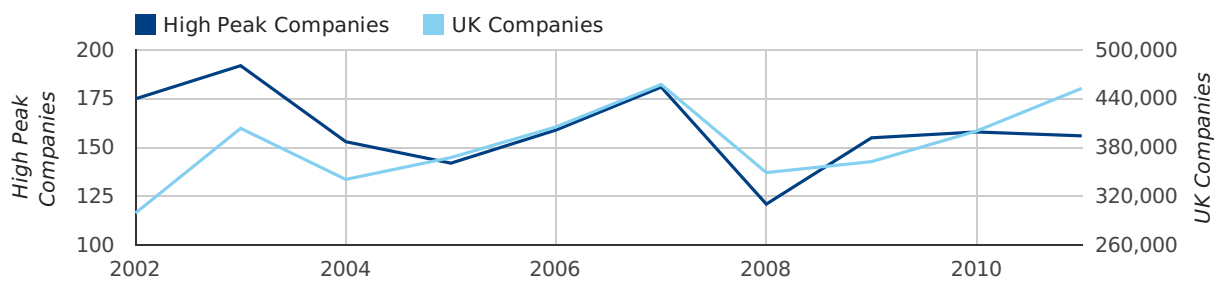
sic data

Annual Data (2011)

A total of 156 companies were formed in High Peak in 2011. This total is 1.3% lower than in 2010 and compares favourably to the UK figure of a 13.1% growth compared to 400,358 the previous year.

YEAR	HIGH PEAK	UK
2011	156	452,870
2010	158	400,358
2009	155	362,675
2008	121	349,203
2007	181	457,649
RECORD YEAR	2003 (192)	2007 (457,649)

new companies by year



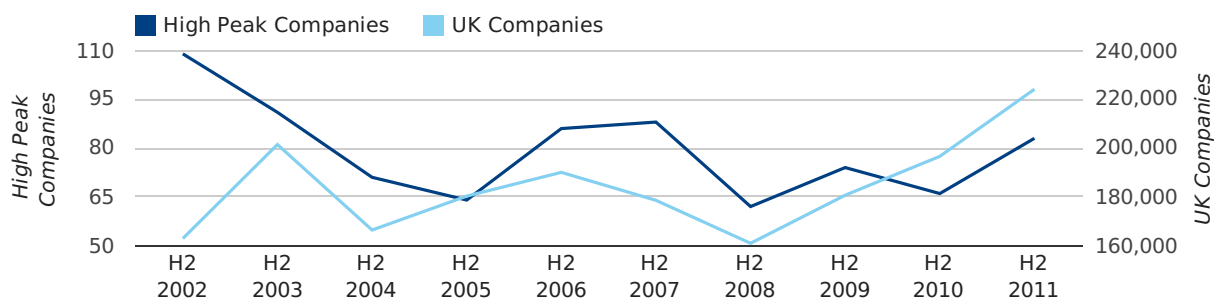
Half Year Data (Jul-Dec 2011)

In the second half of 2011 a total of 83 companies were formed in High Peak. This figure is 25.8% higher than last year, which compares well to the UK wide figure of 14.0%.

The highest total for a second half year in High Peak occurred in 2002 when a total of 109 were formed.

HALF YEAR (JUL-DEC)	HIGH PEAK	UK
2011	83	224,135
2010	66	196,609
% CHANGE	25.8%	14.0%
RECORD YEAR	2002 (109)	2011 (224,135)

new companies by half year



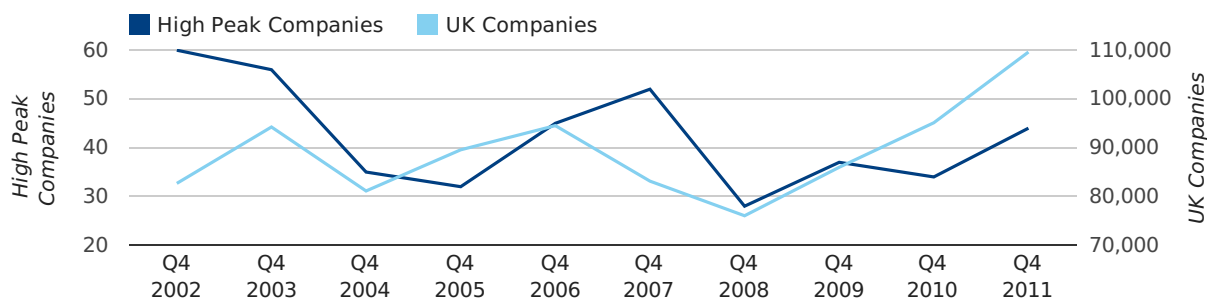
Quarterly Data (Q4 Oct-Dec 2011)

A total of 44 companies were registered in High Peak during the fourth quarter of 2011 (Oct 2011 - Dec 2011).

This figure is an increase of 29.4% versus the same period last year (Q4 2010). This figure compares well to the UK as a whole, which saw an increase of 15.3% against the same period last year.

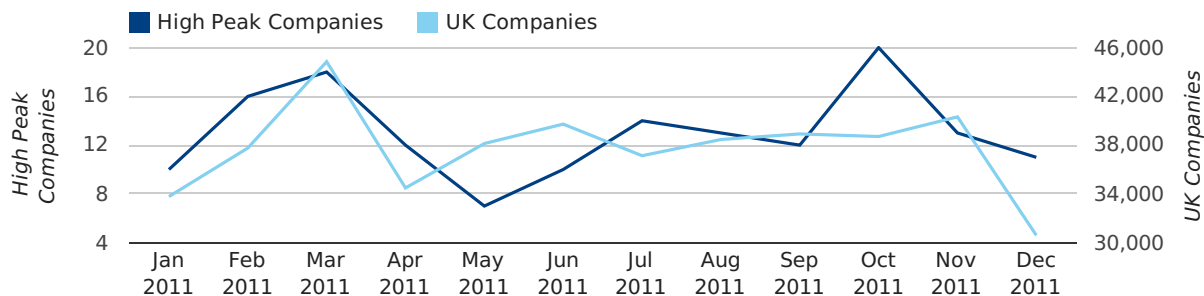
FOURTH QUARTER (OCT 2011 - DEC 2011)	HIGH PEAK	UK
2011	44	109,623
2010	34	95,117
% CHANGE	29.4%	15.3%
RECORD YEAR	2002 (60)	2011 (109,623)

new companies by quarter



Monthly Data (Oct, Nov & Dec 2011)

new companies by month



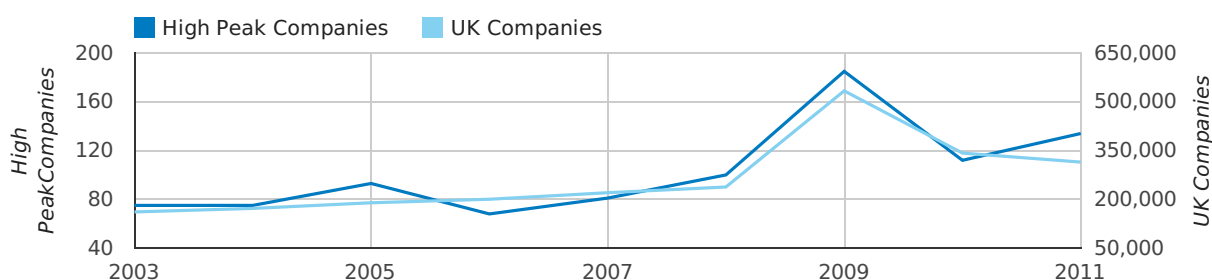
	OCTOBER	NOVEMBER	DECEMBER
NEW COMPANIES IN 2011	20	13	11
NEW COMPANIES IN 2010	14	13	7
% CHANGE	42.9%	0.0%	57.1%
RECORD YEAR	2002 (30)	2003 (20)	2003 (15)

Annual Data (2011)

A total of 134 companies were dissolved in High Peak in 2011. This total is 19.6% higher than in 2010 and compares favourably to the UK figure of 8.1% decrease compared to the previous year.

YEAR	HIGH PEAK	UK
2011	134	314,523
2010	112	342,232
2009	185	533,773
2008	100	237,901
2007	81	220,295
RECORD YEAR	2009 (185)	2009 (533,773)

dissolved companies by year



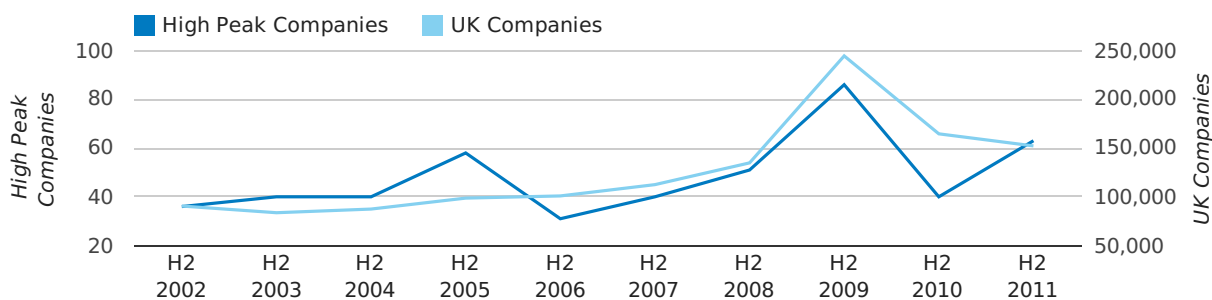
Half Year Data (Jul-Dec 2011)

In the second half of 2011 a total of 63 companies were dissolved in High Peak. This figure is 57.5% higher than last year, which compares badly to the UK wide change of -7.5%.

The highest total for a second half year in High Peak occurred in 2009 when a total of 86 were closed.

HALF YEAR (JUL-DEC)	HIGH PEAK	UK
2011	63	152,213
2010	40	164,601
% CHANGE	57.5%	-7.5%
RECORD YEAR	2009 (86)	2009 (244,537)

dissolved companies by half year



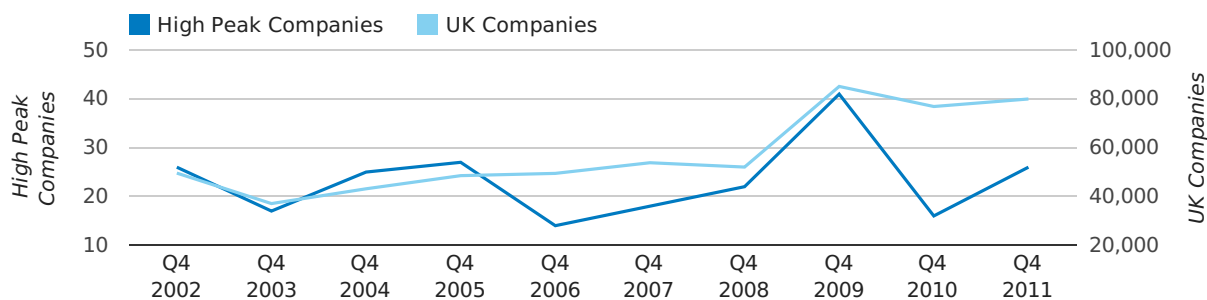
Quarterly Data (Q4 Oct-Dec 2011)

A total of 26 companies were dissolved in High Peak during the fourth quarter of 2011 (Oct 2011 - Dec 2011).

This figure is an increase of 62.5% versus the same period last year (Q4 2010). This figure compares poorly to the UK as a whole, which saw an increase of 4.0% against the same period last year.

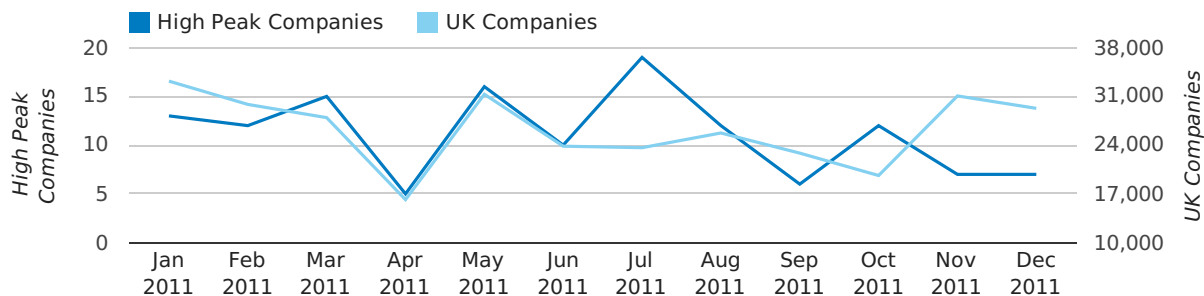
FOURTH QUARTER (OCT 2011 - DEC 2011)	HIGH PEAK	UK
2011	26	79,983
2010	16	76,896
% CHANGE	62.5%	4.0%
RECORD YEAR	2009 (41)	2009 (85,136)

dissolved companies by quarter



Monthly Data (Oct, Nov & Dec 2011)

dissolved companies by month



	OCTOBER	NOVEMBER	DECEMBER
CLOSED COMPANIES IN 2011	12	7	7
CLOSED COMPANIES IN 2010	6	8	2
% CHANGE	100.0%	-12.5%	250%
RECORD YEAR	2002 (13)	2009 (18)	2008 (13)

Annual Data (2011)

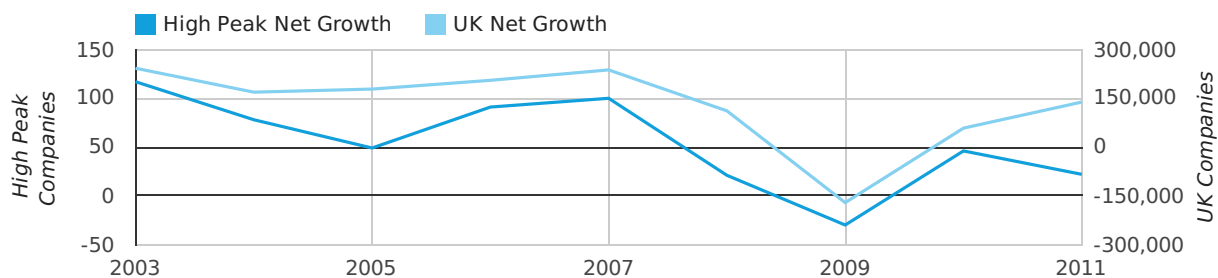
A total of 22 companies were added to the company register for High Peak in 2011. This number represents growth of 13.9% which compares unfavourably to the UK figure of 34.6%.

This number is 24 companies lower than the previous year.

The highest net company growth figure ever seen in one year came in 2003 when the High Peak company register grew by 117 companies.

YEAR	HIGH PEAK	UK
2011	22	138,347
2010	46	58,126
2009	-30	-171,098
2008	21	111,302
2007	100	237,354
RECORD YEAR	2003 (117)	2003 (242,543)

net growth by year

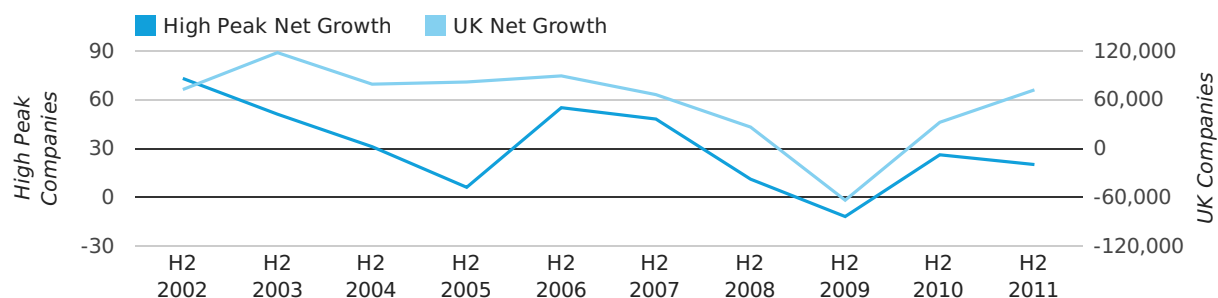


Half Year Data (Jul-Dec 2011)

In the second half of 2011 the company register for High Peak increased by 20 companies. This figure is 23.1% lower than last year, which compares badly to a UK increase of 124.7%.

HALF YEAR (JUL-DEC)	HIGH PEAK	UK
2011	20	71,922
2010	26	32,008
% CHANGE	-23.1%	124.7%
RECORD YEAR	2002 (73)	2003 (117,772)

net growth by half year



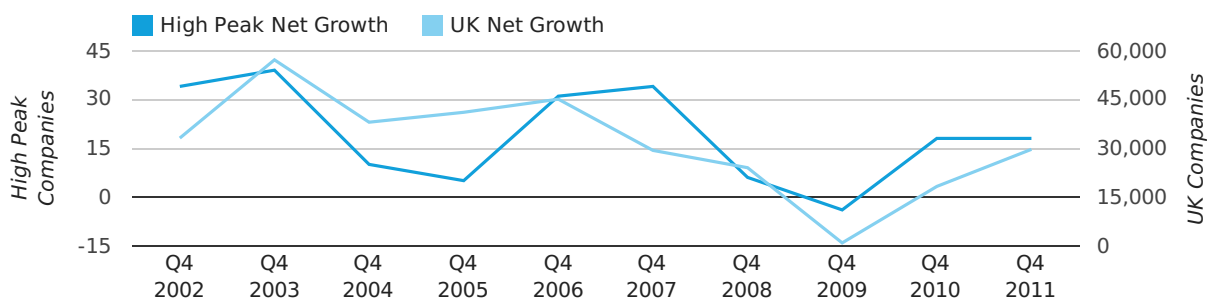
Quarterly Data (Q4 Oct-Dec 2011)

Net company growth for High Peak during the fourth quarter of 2011 (Oct 2011 - Dec 2011) was 18 companies.

This represents an increase of 0.0% on the same period last year.

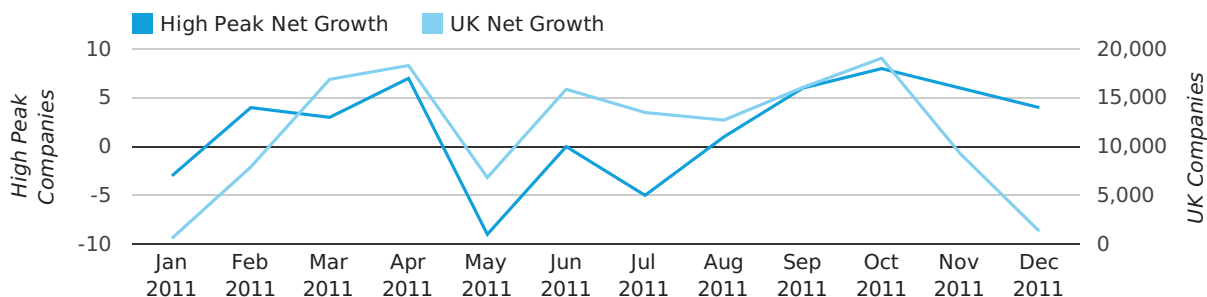
FOURTH QUARTER (OCT 2011 - DEC 2011)	HIGH PEAK	UK
2011	18	29,640
2010	18	18,221
% CHANGE	0.0%	62.7%
RECORD YEAR	2003 (39)	2003 (57,175)

net growth by quarter



Monthly Data (Oct, Nov & Dec 2011)

net growth by month



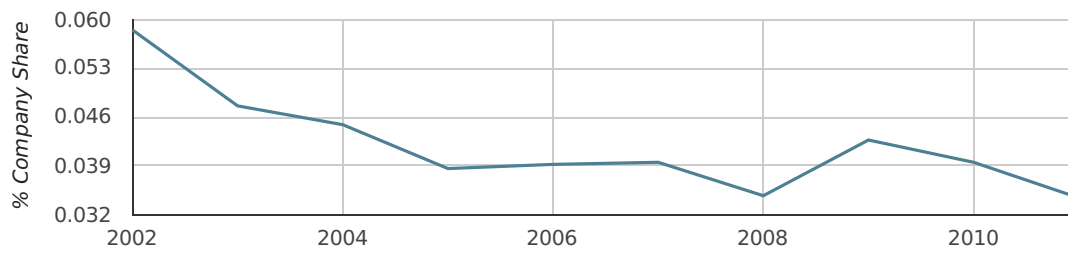
	OCTOBER	NOVEMBER	DECEMBER
NET GROWTH IN 2011	8	6	4
NET GROWTH IN 2010	8	5	5
% CHANGE	0.0%	20.0%	-20.0%
RECORD YEAR	2007 (18)	1999 (13)	2003 (14)

Annual Data (2011)

In 2011 High Peak formed 0.0% of all UK companies. This is no change on 2010 when High Peak was responsible for 0.0% of all UK companies.

YEAR	HIGH PEAK
2011	0.0%
2010	0.0%
2009	0.0%
2008	0.0%
2007	0.0%
RECORD YEAR (SINCE 1960)	1970 (0.1%)

company share by year

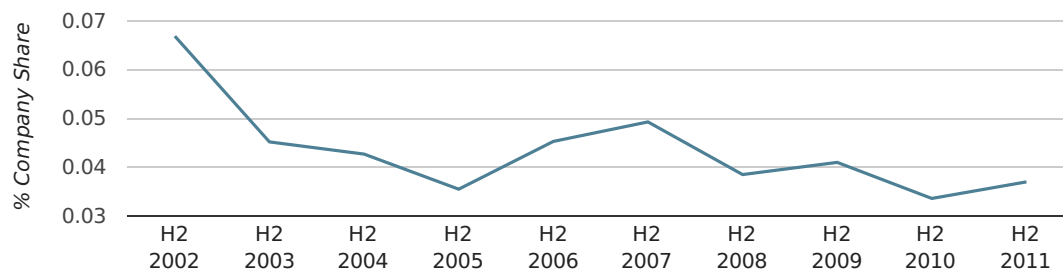


Half Year Data (Jul-Dec 2011)

In the second half of 2011 High Peak formed 0.0% of all UK companies. This is the same as the 2010 figure of 0.0%.

HALF YEAR (JUL-DEC)	HIGH PEAK
2011	0.0%
2010	0.0%
2009	0.0%
2008	0.0%
2007	0.0%
RECORD YEAR (SINCE 1960)	1970 (0.1%)

company share by half year

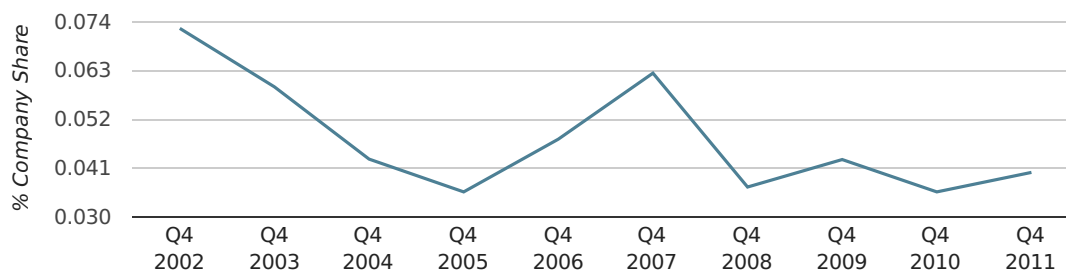


Quarterly Data (Q4 Oct-Dec 2011)

In the fourth quarter of 2011, High Peak formed 0.0% of all UK companies.

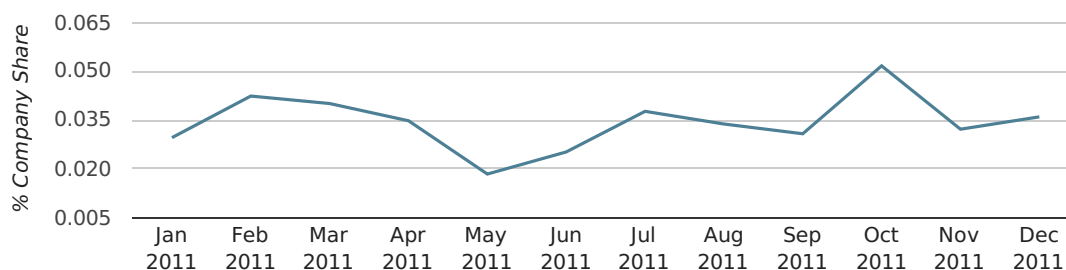
FOURTH QUARTER (OCT 2011 - DEC 2011)	HIGH PEAK
2011	0.0%
2010	0.0%
2009	0.0%
2008	0.0%
2007	0.1%
RECORD YEAR (SINCE 1960)	1970 (0.2%)

company share by quarter



Monthly Data (Oct, Nov & Dec 2011)

company share by month



	OCTOBER	NOVEMBER	DECEMBER
UK FORMATION SHARE IN 2011	0.1%	0.0%	0.0%
UK FORMATION SHARE IN 2010	0.0%	0.0%	0.0%
% CHANGE	24.3%	-14.8%	39.5%
RECORD YEAR	1960 (0.2%)	1970 (0.2%)	1970 (0.3%)

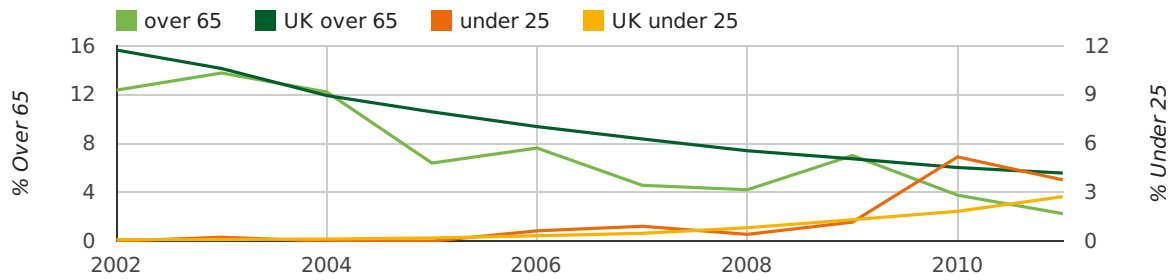
Annual Data (2011)

The average age of a director in 2011 was 43.3.

The percentage of directors under the age of 25 was 3.8% compared to the UK figure of 3.7%.

The percentage of directors over the age of 65 was 2.3% compared to the UK figure of 4.2%.

director age by year



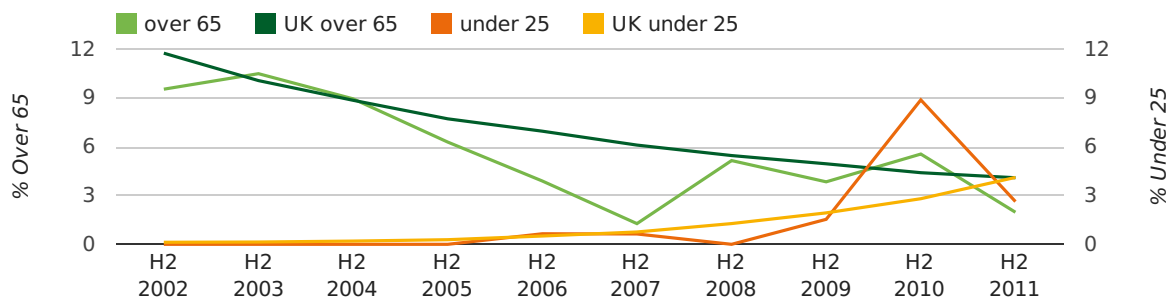
Half Year Data (Jul-Dec 2011)

The average age of a director in the second half of 2011 was 43.8.

The percentage of directors under the age of 25 was 2.6% compared to the UK figure of 4.1%.

The percentage of directors over the age of 65 was 2.0% compared to the UK figure of 4.1%.

director age by half year



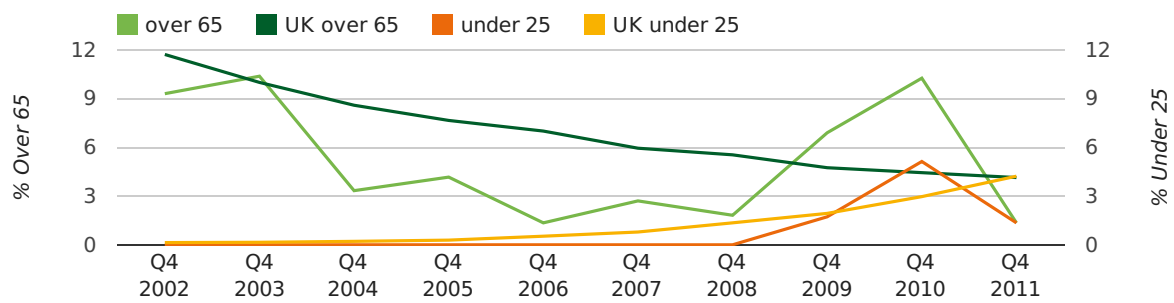
Quarterly Data (Q4 Oct-Dec 2011)

The average age of a director in the fourth quarter of 2011 was 45.8.

The percentage of directors under the age of 25 was 1.4% compared to the UK figure of 4.2%.

The percentage of directors over the age of 65 was 1.4% compared to the UK figure of 4.1%.

director age by quarter

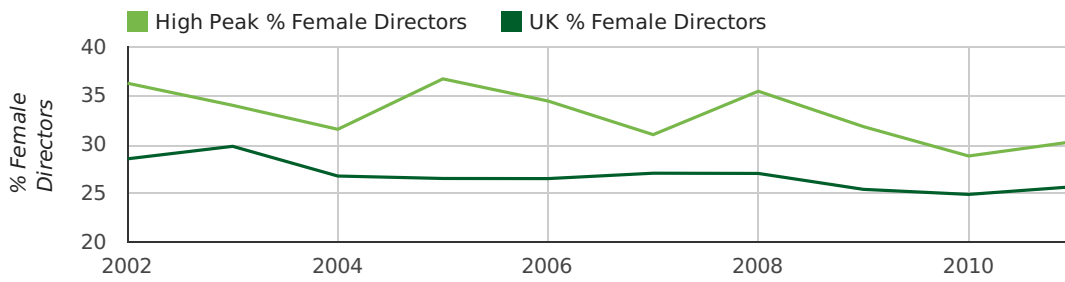


Annual Data (2011)

The record year for female directors in High Peak was 1857 when 36.4% of all directors were female.

The percentage of female directors in High Peak in 2011 was 36.3%. The average for the UK during this time was 28.6%

director gender by year

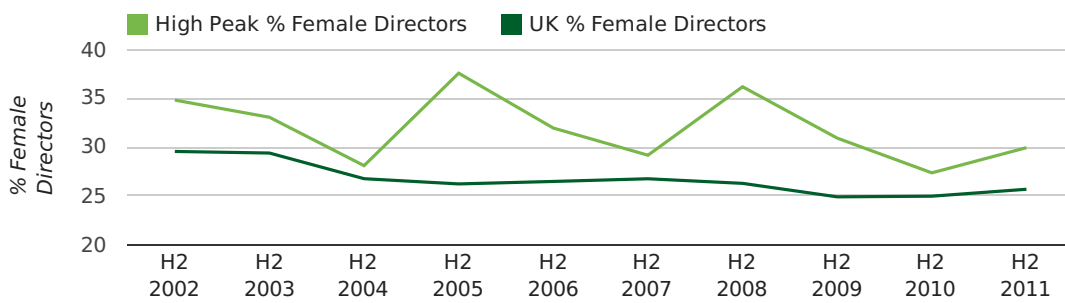


Half Year Data (Jul-Dec 2011)

The record second half year for female directors in High Peak was 1860 when 42.9% of all directors were female.

29.9% of all director appointments in High Peak in the second half of 2011 were female. This compares to a UK average of 25.7% for the same period.

director gender by half year

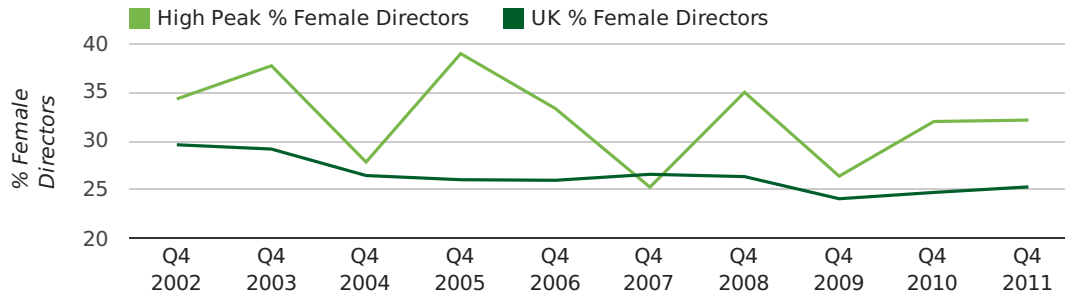


Quarterly Data (Q4 Oct-Dec 2011)

The record fourth quarter for female directors in High Peak was in 1977 when 31.1% of all directors were female.

32.1% of all director appointments in High Peak in the fourth quarter of 2011 were female. This compares to a UK average of 25.3% for the same period.

director gender by quarter



Previous 12 months (Dec 2010-Dec 2011)

Excluding: LIMITED, LTD, &, UK, SERVICES, THE, (UK), AND, LTD., A, LLP, SOLUTIONS, COMPANY, OF.

WORD	PERCENTAGE	UK WORD	UK PERCENTAGE
PEAK	3.04%	CONSULTING	5.07%
CONSULTING	1.52%	MANAGEMENT	4.74%
HIGH	1.22%	CONSULTANCY	3.26%
DESIGN	1.22%	PROPERTY	2.37%
CONSULTANCY	1.22%	TRADING	2.07%
SPRINTSHIFT	0.91%	DESIGN	1.92%
SOLAR	0.91%	ASSOCIATES	1.86%
FUN	0.91%	ENGINEERING	1.78%
CONSULTANTS	0.91%	BUSINESS	1.78%
ENGINEERING	0.61%	CONSULTANTS	1.76%
MANCHESTER	0.61%	CONSTRUCTION	1.73%
HIRE	0.61%	MEDIA	1.71%
PROJECT	0.61%	LONDON	1.63%
MANAGEMENT	0.61%	J	1.51%
S	0.61%	INVESTMENTS	1.48%
NATURAL	0.61%	GLOBAL	1.46%
JOINERY	0.61%	IT	1.41%
TRAINING	0.61%	CARE	1.39%
FITNESS	0.61%	PROPERTIES	1.29%
SHIRTS	0.61%	ELECTRICAL	1.29%
MR	0.61%	M	1.27%
CHESHIRE	0.61%	BUILDING	1.26%
(Nw)	0.61%	ENERGY	1.25%
PLC	0.61%	S	1.20%
C.I.C.	0.61%	ENTERPRISES	1.20%

Previous 36 months, excluding companies less than 12 months old

SIC CODE	NUMBER OF COMPANIES	UK COMPANIES
None Supplied	61	205,525
7487 - Other business activities	23	57,052
82990 - Other business support service activities not elsewhere classified	17	32,483
70229 - Management consultancy activities other than financial management	9	17,765
62020 - Information technology consultancy activities	8	12,072
49410 - Freight transport by road	6	2,392
99999 - Dormant Company	6	21,846
4521 - General construction & civil engineering	5	5,558
68209 - Other letting and operating of own or leased real estate	5	4,082
7499 - Non-trading company	5	9,957
9999 - Dormant Company	5	20,199
96090 - Other service activities not elsewhere classified	5	11,768
69201 - Accounting and auditing activities	4	3,633
9305 - Other service activities	4	9,492
5540 - Bars	4	2,147
7222 - Other software consultancy and supply	4	7,398
70100 - Activities of head offices	4	2,662
43210 - Electrical installation	4	3,175
7414 - Business & management consultancy	3	13,034
56103 - Take-away food shops and mobile food stands	3	2,264