

# Hounslow

q1 2011 business confidence report



## headlines

- Q1 2011 saw a new record in company closures in Hounslow when compared to any previous Q1.
- Q1 2011 was a record quarter for company closures in Hounslow when compared to any quarter in history.
- February 2011 saw a new record in company closures in Hounslow when compared to any previous February.
- February 2011 was a record month for company closures in Hounslow when compared to any month in history.

## contents

new company registrations

closed companies (dissolved)

net company growth

uk company share

director age

director gender

naming trends

sic data

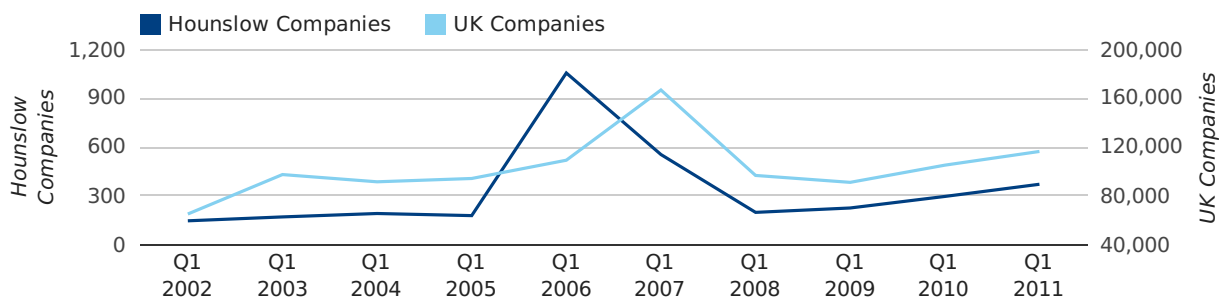
### Quarterly Data (Q1 Jan-Mar 2011)

A total of 371 companies were registered in Hounslow during the first quarter of 2011 (Jan 2011 - Mar 2011).

This figure is an increase of 25.3% versus the same period last year (Q1 2010). This figure compares well to the UK as a whole, which saw an increase of 10.7% against the same period last year.

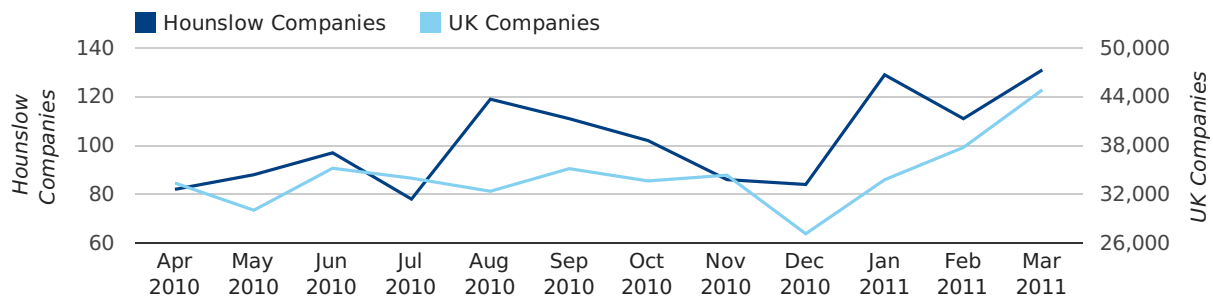
FIRST QUARTER (JAN 2011 - MAR 2011)	HOUNSLOW	UK
2011	371	116,391
2010	296	105,137
% CHANGE	25.3%	10.7%
RECORD YEAR	2006 (1,056)	2007 (166,814)

### new companies by quarter



### Monthly Data (Jan, Feb & Mar 2011)

### new companies by month



	JANUARY	FEBRUARY	MARCH
NEW COMPANIES IN 2011	129	111	131
NEW COMPANIES IN 2010	80	94	122
% CHANGE	61.3%	18.1%	7.4%
RECORD YEAR	2006 (260)	2006 (519)	2006 (277)

### Quarterly Data (Q1 Jan-Mar 2011)

Q1 2011 saw a new record in company closures in Hounslow when compared to any previous Q1.

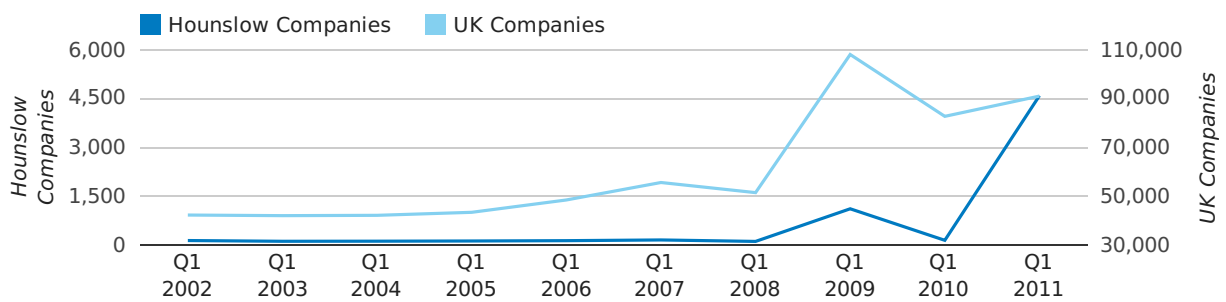
Q1 2011 was a record quarter for company closures in Hounslow when compared to any quarter in history.

A total of 4,586 companies were dissolved in Hounslow during the first quarter of 2011 (Jan 2011 - Mar 2011).

This figure is an increase of 3,272.1% versus the same period last year (Q1 2010). This figure compares poorly to the UK as a whole, which saw an increase of 10.0% against the same period last year.

FIRST QUARTER (JAN 2011 - MAR 2011)	HOUNSLOW	UK
2011	4,586	90,986
2010	136	82,677
% CHANGE	3,272.1%	10.0%
RECORD YEAR	2011 (4,586)	2009 (108,060)

### dissolved companies by quarter

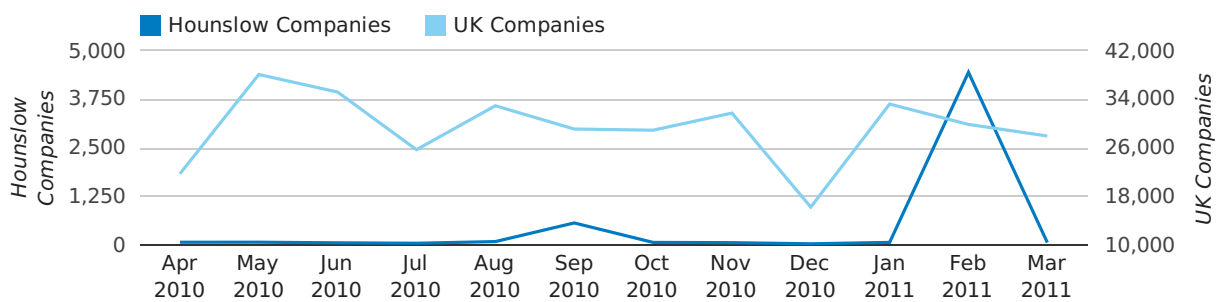


### Monthly Data (Jan, Feb & Mar 2011)

February 2011 saw a new record in company closures in Hounslow when compared to any previous February.

February 2011 was a record month for company closures in Hounslow when compared to any month in history.

### dissolved companies by month



	JANUARY	FEBRUARY	MARCH
CLOSED COMPANIES IN 2011	76	4,438	72
CLOSED COMPANIES IN 2010	29	48	59
% CHANGE	162.1%	9,145.8%	22%
RECORD YEAR	2009 (819)	2011 (4,438)	2009 (201)



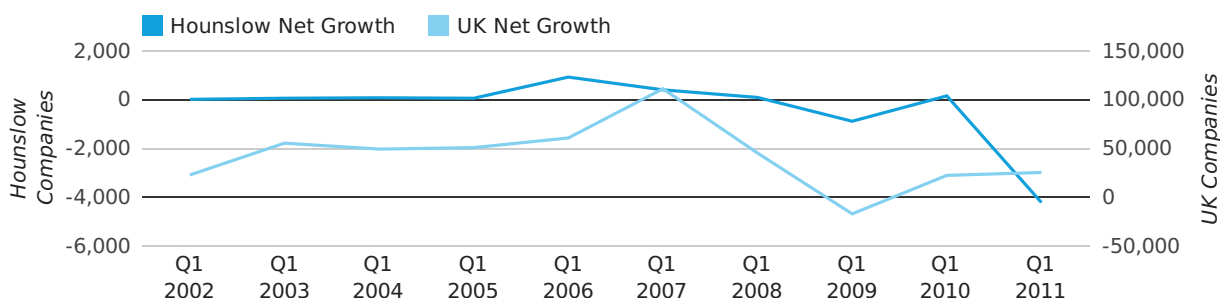
### Quarterly Data (Q1 Jan-Mar 2011)

Net company growth for Hounslow during the first quarter of 2011 (Jan 2011 - Mar 2011) was -4,215 companies.

This represents a decrease of 2,734.4% on the same period last year.

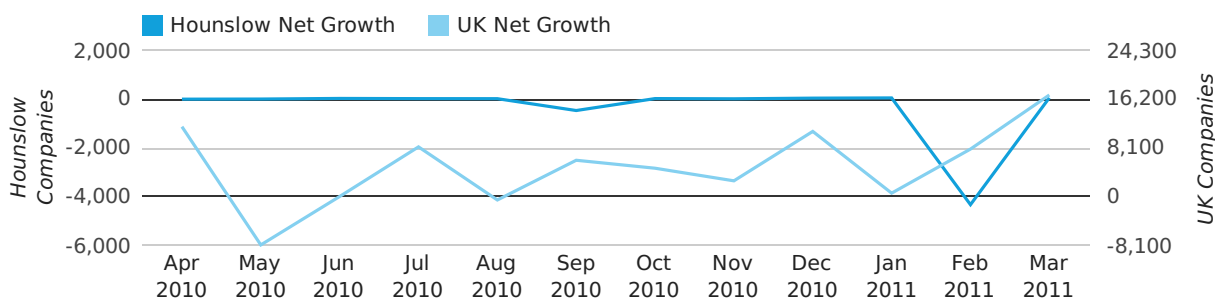
FIRST QUARTER (JAN 2011 - MAR 2011)	HOUNSLOW	UK
2011	-4,215	25,405
2010	160	22,460
% CHANGE	-2,734.4%	13.1%
RECORD YEAR	2006 (931)	2007 (111,282)

### net growth by quarter



### Monthly Data (Jan, Feb & Mar 2011)

#### net growth by month



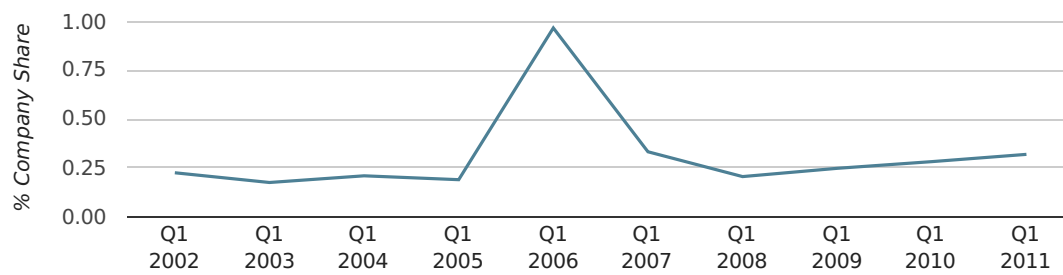
	JANUARY	FEBRUARY	MARCH
NET GROWTH IN 2011	53	-4,327	59
NET GROWTH IN 2010	51	46	63
% CHANGE	3.9%	-9,506.5%	-6.3%
RECORD YEAR	2006 (209)	2006 (483)	2006 (239)

### Quarterly Data (Q1 Jan-Mar 2011)

In the first quarter of 2011, Hounslow formed 0.3% of all UK companies.

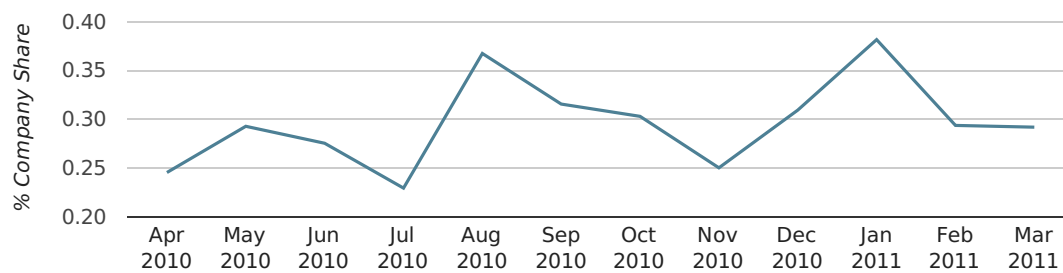
FIRST QUARTER (JAN 2011 - MAR 2011)	HOUNSLOW
2011	0.3%
2010	0.3%
2009	0.2%
2008	0.2%
2007	0.3%
RECORD YEAR (SINCE 1960)	2006 (1.0%)

### company share by quarter



### Monthly Data (Jan, Feb & Mar 2011)

### company share by month



	JANUARY	FEBRUARY	MARCH
UK FORMATION SHARE IN 2011	0.4%	0.3%	0.3%
UK FORMATION SHARE IN 2010	0.3%	0.3%	0.3%
% CHANGE	39.1%	3.9%	2.4%
RECORD YEAR	2006 (0.8%)	2006 (1.5%)	2006 (0.6%)

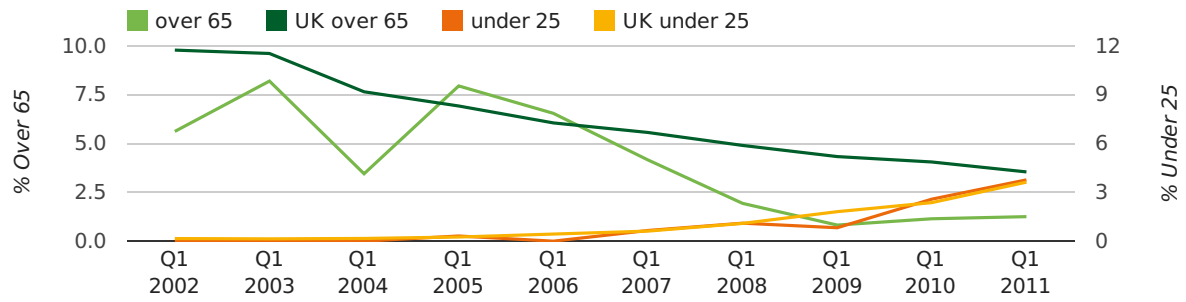
### Quarterly Data (Q1 Jan-Mar 2011)

The average age of a director in the first quarter of 2011 was 37.8.

The percentage of directors under the age of 25 was 3.8% compared to the UK figure of 3.0%.

The percentage of directors over the age of 65 was 1.3% compared to the UK figure of 4.3%.

#### director age by quarter



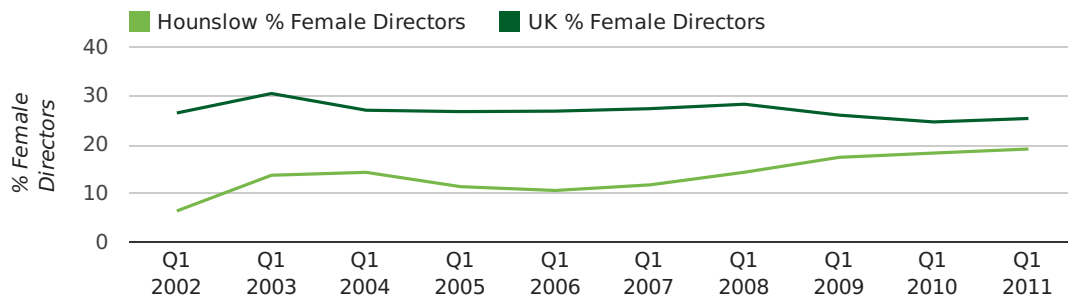


### Quarterly Data (Q1 Jan-Mar 2011)

The record first quarter for female directors in Hounslow was in 1861 when 40.0% of all directors were female.

19.1% of all director appointments in Hounslow in the first quarter of 2011 were female. This compares to a UK average of 25.4% for the same period.

### director gender by quarter



## Previous 12 months (Mar 2010-Mar 2011)

Excluding: LIMITED, LTD, &amp;, UK, SERVICES, THE, (UK), AND, LTD., A, LLP, SOLUTIONS, COMPANY, OF.

WORD	PERCENTAGE	UK WORD	UK PERCENTAGE
CONSULTANCY	2.28%	CONSULTING	5.04%
CONSULTING	1.80%	MANAGEMENT	4.97%
LONDON	1.74%	CONSULTANCY	3.16%
IT	1.56%	PROPERTY	2.38%
CONSULTANTS	1.44%	TRADING	2.10%
TECHNOLOGIES	1.44%	DESIGN	1.93%
GLOBAL	1.38%	ASSOCIATES	1.92%
BUSINESS	1.26%	BUSINESS	1.87%
TRADING	1.14%	CONSTRUCTION	1.80%
MANAGEMENT	1.14%	CONSULTANTS	1.76%
SOFTWARE	0.84%	MEDIA	1.69%
CONSTRUCTION	0.84%	ENGINEERING	1.61%
SYSTEMS	0.78%	LONDON	1.60%
S	0.78%	CARE	1.45%
TRADERS	0.78%	J	1.45%
EXPRESS	0.78%	GLOBAL	1.44%
G	0.72%	INVESTMENTS	1.43%
EDUCATION	0.66%	IT	1.41%
ASSOCIATES	0.66%	PROPERTIES	1.36%
EUROPE	0.60%	BUILDING	1.34%
SOLUTION	0.60%	M	1.30%
CAR	0.60%	ELECTRICAL	1.28%
PROPERTY	0.54%	S	1.24%
TECH	0.54%	INTERNATIONAL	1.23%
COLLEGE	0.54%	SYSTEMS	1.23%

## Previous 36 months, excluding companies less than 12 months old

SIC CODE	NUMBER OF COMPANIES	UK COMPANIES
None Supplied	752	202,798
7487 - Other business activities	102	60,968
62020 - Information technology consultancy activities	66	10,246
7222 - Other software consultancy and supply	47	7,000
62090 - Other information technology service activities	43	6,996
9999 - Dormant Company	38	19,765
7260 - Other computer related activities	36	7,789
9305 - Other service activities	30	8,740
70229 - Management consultancy activities other than financial management	23	16,150
96090 - Other service activities not elsewhere classified	20	10,085
82990 - Other business support service activities not elsewhere classified	20	30,253
7499 - Non-trading company	19	11,316
7414 - Business & management consultancy	18	12,916
62012 - Business and domestic software development	18	3,168
99999 - Dormant Company	15	18,336
6024 - Freight transport by road	13	2,299
86900 - Other human health activities	12	4,092
47110 - Retail sale in non-specialised stores with food, beverages or tobacco predominating	12	1,193
4521 - General construction & civil engineering	12	6,183
41202 - Construction of domestic buildings	10	2,290