

# Leeds

q1 2011 business confidence report



## headlines

- February 2011 saw a new record in company closures in Leeds when compared to any previous February.
- January 2011 saw a new record in company closures in Leeds when compared to any previous January.

## contents

new company registrations

closed companies (dissolved)

net company growth

uk company share

director age

director gender

naming trends

sic data

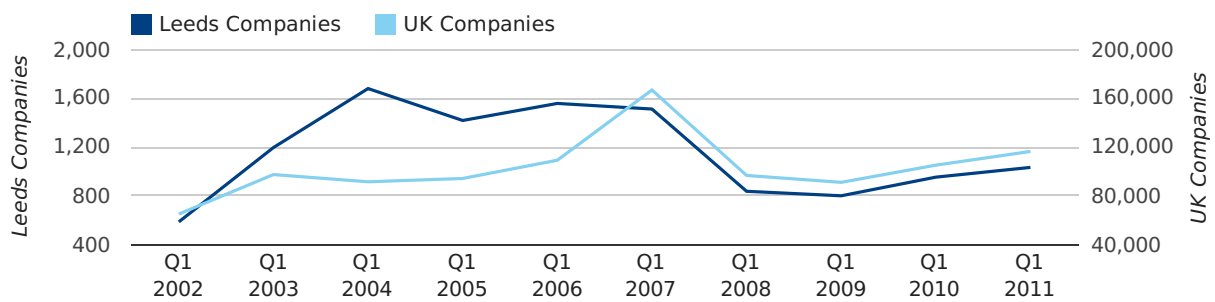
### Quarterly Data (Q1 Jan-Mar 2011)

A total of 1,033 companies were registered in Leeds during the first quarter of 2011 (Jan 2011 - Mar 2011).

This figure is an increase of 8.4% versus the same period last year (Q1 2010). This figure compares equally to the UK as a whole, which saw an increase of 10.7% against the same period last year.

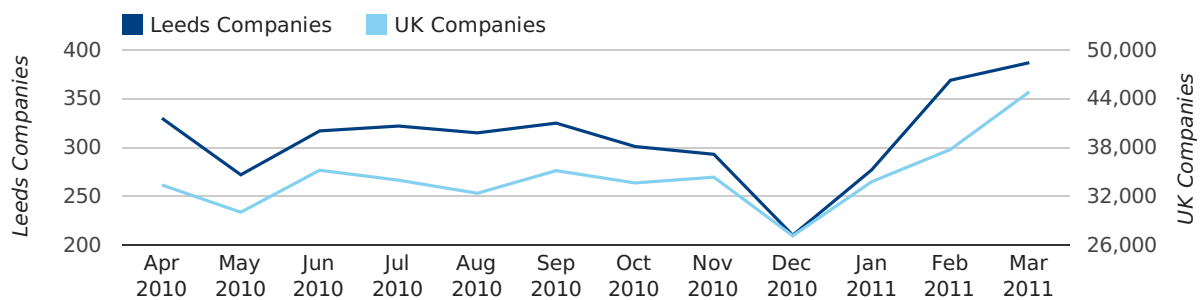
FIRST QUARTER (JAN 2011 - MAR 2011)	LEEDS	UK
2011	1,033	116,391
2010	953	105,137
% CHANGE	8.4%	10.7%
RECORD YEAR	2004 (1,680)	2007 (166,814)

### new companies by quarter



### Monthly Data (Jan, Feb & Mar 2011)

### new companies by month



	JANUARY	FEBRUARY	MARCH
NEW COMPANIES IN 2011	277	369	387
NEW COMPANIES IN 2010	248	312	393
% CHANGE	11.7%	18.3%	-1.5%
RECORD YEAR	2007 (495)	2004 (639)	2006 (626)

### Quarterly Data (Q1 Jan-Mar 2011)

A total of 889 companies were dissolved in Leeds during the first quarter of 2011 (Jan 2011 - Mar 2011).

This figure is an increase of 1.9% versus the same period last year (Q1 2010). This figure compares well to the UK as a whole, which saw an increase of 10.0% against the same period last year.

FIRST QUARTER (JAN 2011 - MAR 2011)	LEEDS	UK
2011	889	90,986
2010	872	82,677
% CHANGE	1.9%	10.0%
RECORD YEAR	2009 (3,912)	2009 (108,060)

### dissolved companies by quarter

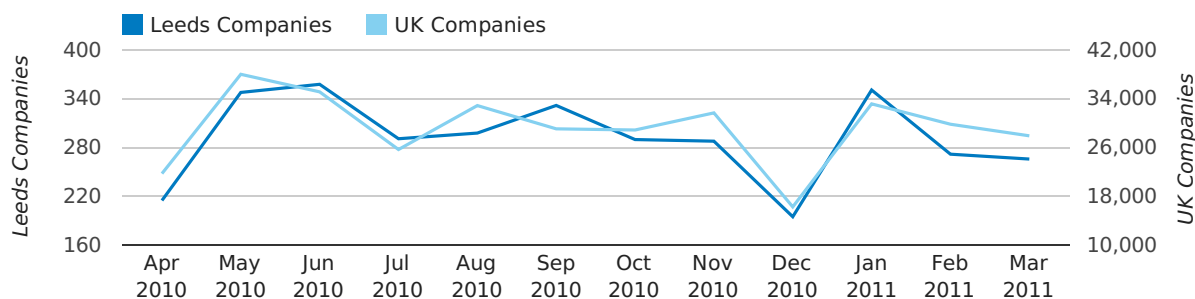


### Monthly Data (Jan, Feb & Mar 2011)

February 2011 saw a new record in company closures in Leeds when compared to any previous February.

January 2011 saw a new record in company closures in Leeds when compared to any previous January.

### dissolved companies by month



	JANUARY	FEBRUARY	MARCH
CLOSED COMPANIES IN 2011	351	272	266
CLOSED COMPANIES IN 2010	244	268	360
% CHANGE	43.9%	1.5%	-26%
RECORD YEAR	2011 (351)	2011 (272)	2009 (3,558)

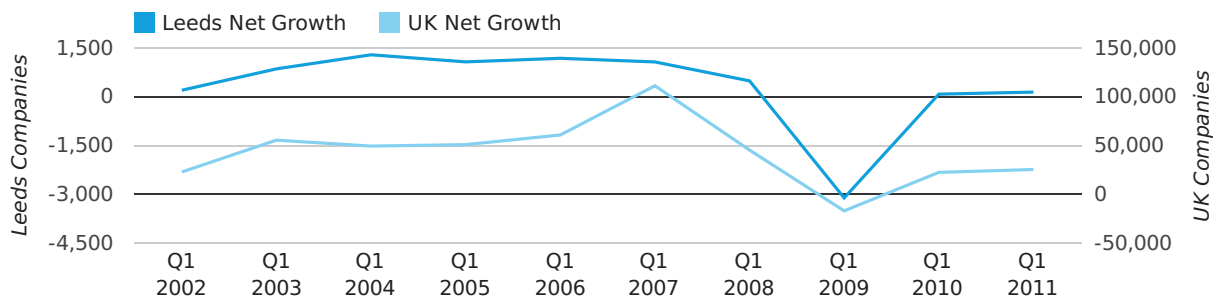
### Quarterly Data (Q1 Jan-Mar 2011)

Net company growth for Leeds during the first quarter of 2011 (Jan 2011 - Mar 2011) was 144 companies.

This represents an increase of 77.8% on the same period last year.

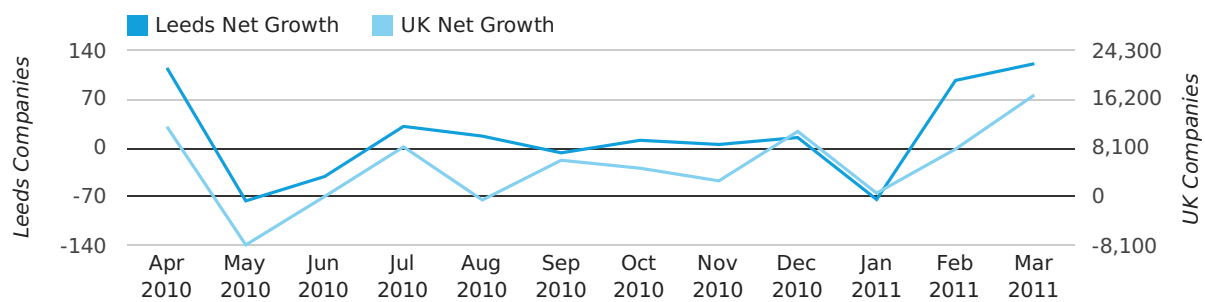
FIRST QUARTER (JAN 2011 - MAR 2011)	LEEDS	UK
2011	144	25,405
2010	81	22,460
% CHANGE	77.8%	13.1%
RECORD YEAR	2004 (1,292)	2007 (111,282)

### net growth by quarter



### Monthly Data (Jan, Feb & Mar 2011)

#### net growth by month



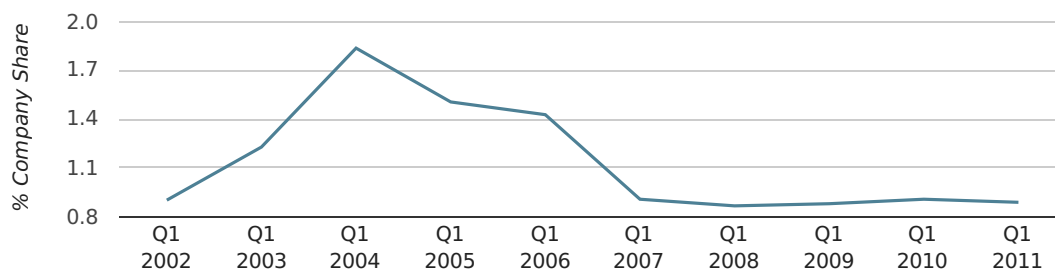
	JANUARY	FEBRUARY	MARCH
NET GROWTH IN 2011	-74	97	121
NET GROWTH IN 2010	4	44	33
% CHANGE	-1,950.0%	120.5%	266.7%
RECORD YEAR	2004 (336)	2004 (537)	2006 (532)

### Quarterly Data (Q1 Jan-Mar 2011)

In the first quarter of 2011, Leeds formed 0.9% of all UK companies.

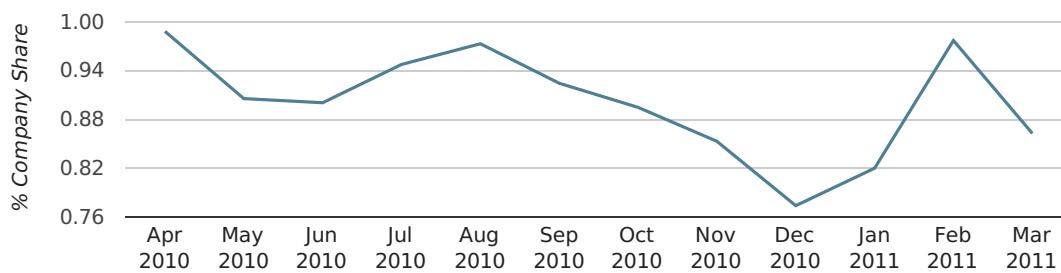
FIRST QUARTER (JAN 2011 - MAR 2011)	LEEDS
2011	0.9%
2010	0.9%
2009	0.9%
2008	0.9%
2007	0.9%
RECORD YEAR (SINCE 1960)	1969 (2.1%)

### company share by quarter



### Monthly Data (Jan, Feb & Mar 2011)

### company share by month



	JANUARY	FEBRUARY	MARCH
UK FORMATION SHARE IN 2011	0.8%	1.0%	0.9%
UK FORMATION SHARE IN 2010	0.9%	0.9%	0.9%
% CHANGE	-3.6%	4.0%	-6.1%
RECORD YEAR	1968 (3.1%)	1969 (2.3%)	1968 (2.2%)

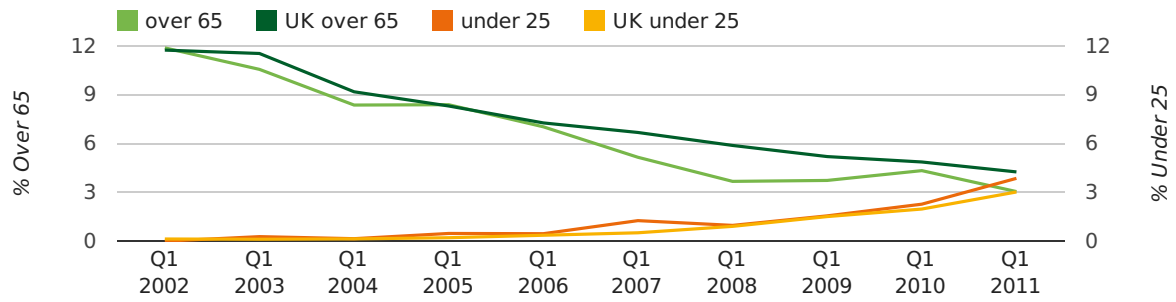
### Quarterly Data (Q1 Jan-Mar 2011)

The average age of a director in the first quarter of 2011 was 42.4.

The percentage of directors under the age of 25 was 3.9% compared to the UK figure of 3.0%.

The percentage of directors over the age of 65 was 3.1% compared to the UK figure of 4.3%.

#### director age by quarter

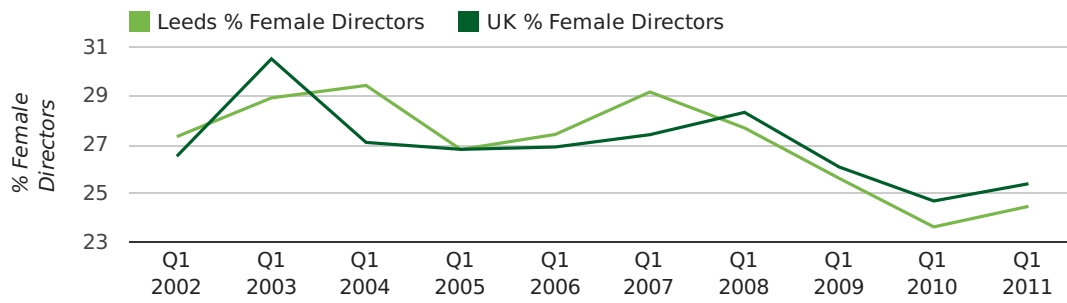


### Quarterly Data (Q1 Jan-Mar 2011)

The record first quarter for female directors in Leeds was in 1861 when 40.0% of all directors were female.

24.5% of all director appointments in Leeds in the first quarter of 2011 were female. This compares to a UK average of 25.4% for the same period.

### director gender by quarter





## Previous 12 months (Mar 2010-Mar 2011)

Excluding: LIMITED, LTD, &amp;, UK, SERVICES, THE, (UK), AND, LTD., A, LLP, SOLUTIONS, COMPANY, OF.

WORD	PERCENTAGE	UK WORD	UK PERCENTAGE
MANAGEMENT	2.59%	CONSULTING	5.04%
LEEDS	1.82%	MANAGEMENT	4.97%
PROPERTY	1.39%	CONSULTANCY	3.16%
(LEEDS)	1.26%	PROPERTY	2.38%
CONSULTANCY	1.22%	TRADING	2.10%
CONSULTING	1.22%	DESIGN	1.93%
PROPERTIES	0.81%	ASSOCIATES	1.92%
BUSINESS	0.75%	BUSINESS	1.87%
CARE	0.71%	CONSTRUCTION	1.80%
MEDIA	0.71%	CONSULTANTS	1.76%
YORKSHIRE	0.71%	MEDIA	1.69%
ASSOCIATES	0.69%	ENGINEERING	1.61%
(YORKSHIRE)	0.69%	LONDON	1.60%
DESIGN	0.62%	CARE	1.45%
INVESTMENTS	0.60%	J	1.45%
MARKETING	0.58%	GLOBAL	1.44%
MEDICAL	0.58%	INVESTMENTS	1.43%
J	0.56%	IT	1.41%
CONSULTANTS	0.56%	PROPERTIES	1.36%
S	0.54%	BUILDING	1.34%
CONSTRUCTION	0.51%	M	1.30%
HOLDINGS	0.51%	ELECTRICAL	1.28%
ELECTRICAL	0.51%	S	1.24%
ENERGY	0.51%	INTERNATIONAL	1.23%
GROUP	0.51%	SYSTEMS	1.23%

## Previous 36 months, excluding companies less than 12 months old

SIC CODE	NUMBER OF COMPANIES	UK COMPANIES
None Supplied	1,865	202,798
7487 - Other business activities	375	60,968
82990 - Other business support service activities not elsewhere classified	159	30,253
9999 - Dormant Company	143	19,765
99999 - Dormant Company	136	18,336
70229 - Management consultancy activities other than financial management	130	16,150
7414 - Business & management consultancy	99	12,916
62020 - Information technology consultancy activities	95	10,246
7499 - Non-trading company	86	11,316
74990 - Non-trading company	81	8,695
7260 - Other computer related activities	78	7,789
7222 - Other software consultancy and supply	74	7,000
9305 - Other service activities	63	8,740
74909 - Other professional, scientific and technical activities not elsewhere classified	62	7,788
96090 - Other service activities not elsewhere classified	59	10,085
62090 - Other information technology service activities	59	6,996
86900 - Other human health activities	51	4,092
7011 - Development & sell real estate	48	2,654
4521 - General construction & civil engineering	47	6,183
68320 - Management of real estate on a fee or contract basis	46	3,220