

Leeds

q3 2011 business confidence report



contents

new company registrations

closed companies (dissolved)

net company growth

uk company share

director age

director gender

naming trends

sic data

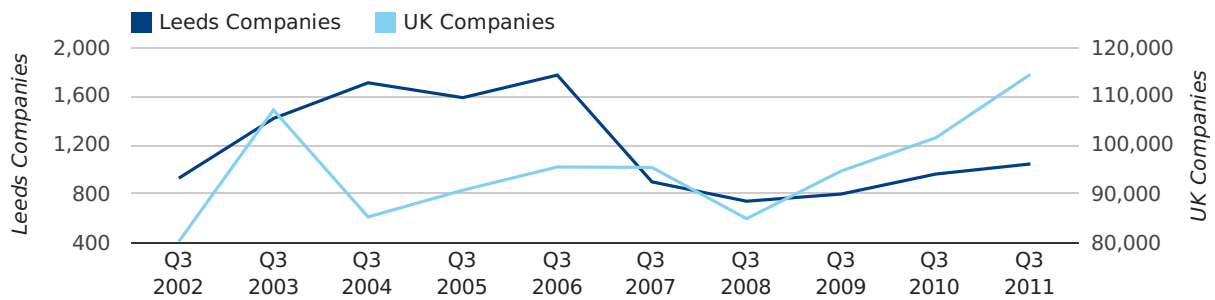
Quarterly Data (Q3 Jul-Sep 2011)

A total of 1,045 companies were registered in Leeds during the third quarter of 2011 (Jul 2011 - Sep 2011).

This figure is an increase of 8.6% versus the same period last year (Q3 2010). This figure compares equally to the UK as a whole, which saw an increase of 12.8% against the same period last year.

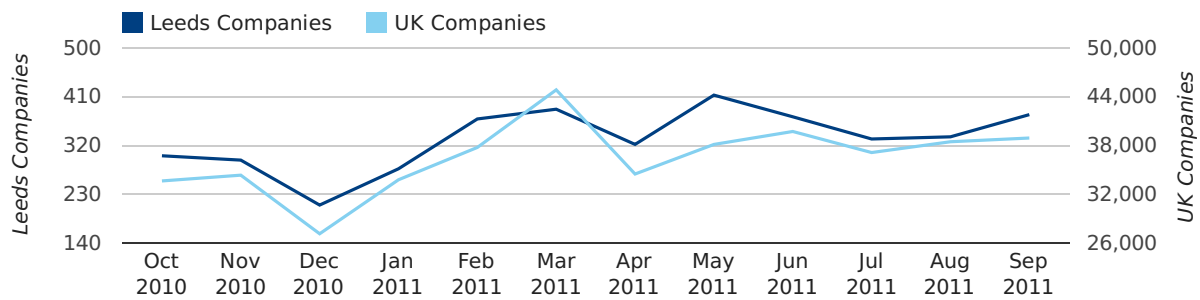
THIRD QUARTER (JUL 2011 - SEP 2011)	LEEDS	UK
2011	1,045	114,512
2010	962	101,492
% CHANGE	8.6%	12.8%
RECORD YEAR	2006 (1,774)	2011 (114,512)

new companies by quarter



Monthly Data (Jul, Aug & Sep 2011)

new companies by month



	JULY	AUGUST	SEPTEMBER
NEW COMPANIES IN 2011	332	336	377
NEW COMPANIES IN 2010	322	315	325
% CHANGE	3.1%	6.7%	16.0%
RECORD YEAR	2004 (587)	2006 (596)	2006 (630)

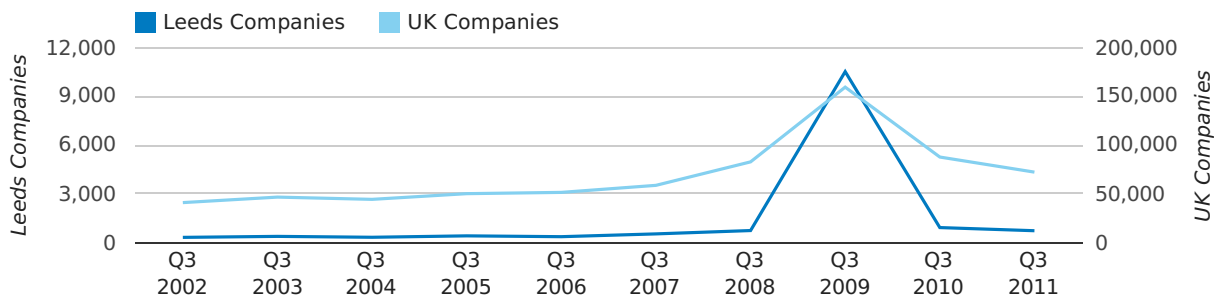
Quarterly Data (Q3 Jul-Sep 2011)

A total of 727 companies were dissolved in Leeds during the third quarter of 2011 (Jul 2011 - Sep 2011).

This figure is a decrease of 21.1% versus the same period last year (Q3 2010). This figure compares well to the UK as a whole, which saw a decrease of 17.6% against the same period last year.

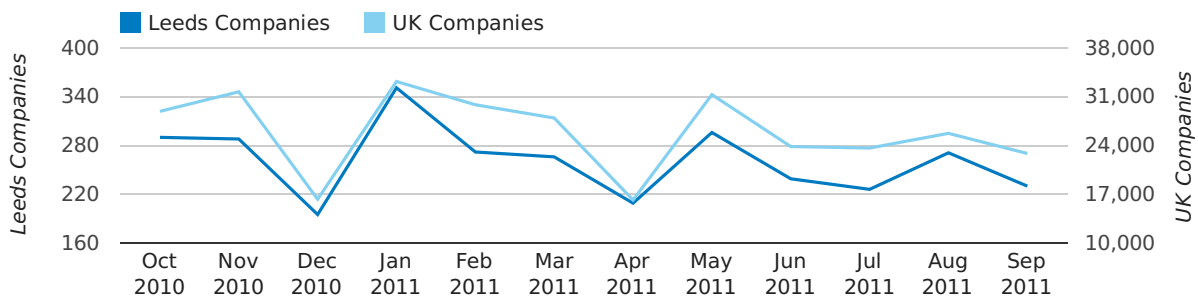
THIRD QUARTER (JUL 2011 - SEP 2011)	LEEDS	UK
2011	727	72,230
2010	921	87,705
% CHANGE	-21.1%	-17.6%
RECORD YEAR	2009 (10,519)	2009 (159,401)

dissolved companies by quarter



Monthly Data (Jul, Aug & Sep 2011)

dissolved companies by month



	JULY	AUGUST	SEPTEMBER
CLOSED COMPANIES IN 2011	226	271	230
CLOSED COMPANIES IN 2010	291	298	332
% CHANGE	-22.3%	-9.1%	-31%
RECORD YEAR	2009 (5,157)	2009 (4,219)	2009 (1,143)

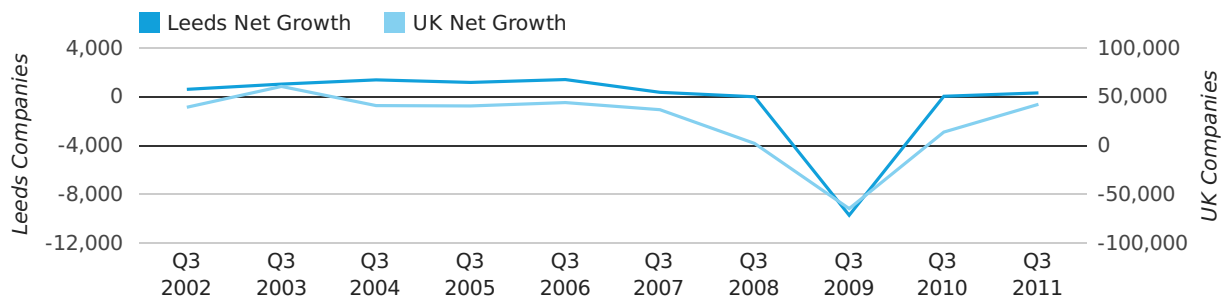
Quarterly Data (Q3 Jul-Sep 2011)

Net company growth for Leeds during the third quarter of 2011 (Jul 2011 - Sep 2011) was 318 companies.

This represents an increase of 675.6% on the same period last year.

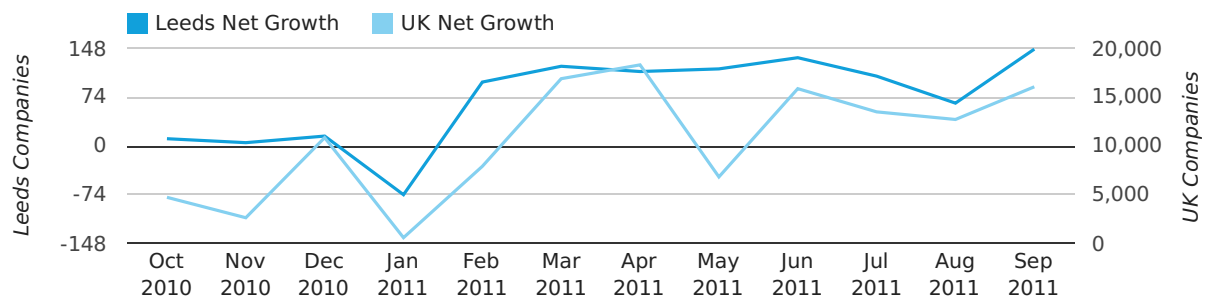
THIRD QUARTER (JUL 2011 - SEP 2011)	LEEDS	UK
2011	318	42,282
2010	41	13,787
% CHANGE	675.6%	206.7%
RECORD YEAR	2006 (1,414)	2003 (60,597)

net growth by quarter



Monthly Data (Jul, Aug & Sep 2011)

net growth by month



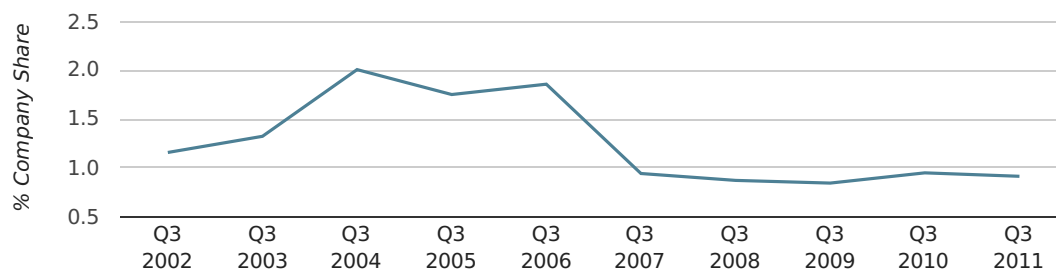
	JULY	AUGUST	SEPTEMBER
NET GROWTH IN 2011	106	65	147
NET GROWTH IN 2010	31	17	-7
% CHANGE	241.9%	282.4%	-2,200.0%
RECORD YEAR	2004 (489)	2006 (458)	2004 (528)

Quarterly Data (Q3 Jul-Sep 2011)

In the third quarter of 2011, Leeds formed 0.9% of all UK companies.

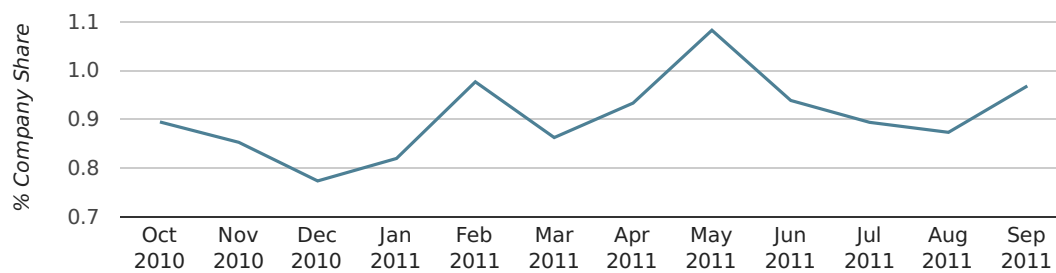
THIRD QUARTER (JUL 2011 - SEP 2011)	LEEDS
2011	0.9%
2010	0.9%
2009	0.8%
2008	0.9%
2007	0.9%
RECORD YEAR (SINCE 1960)	1964 (2.2%)

company share by quarter



Monthly Data (Jul, Aug & Sep 2011)

company share by month



	JULY	AUGUST	SEPTEMBER
UK FORMATION SHARE IN 2011	0.9%	0.9%	1.0%
UK FORMATION SHARE IN 2010	0.9%	1.0%	0.9%
% CHANGE	-5.7%	-10.2%	4.8%
RECORD YEAR	1964 (2.9%)	1977 (2.4%)	1963 (2.6%)

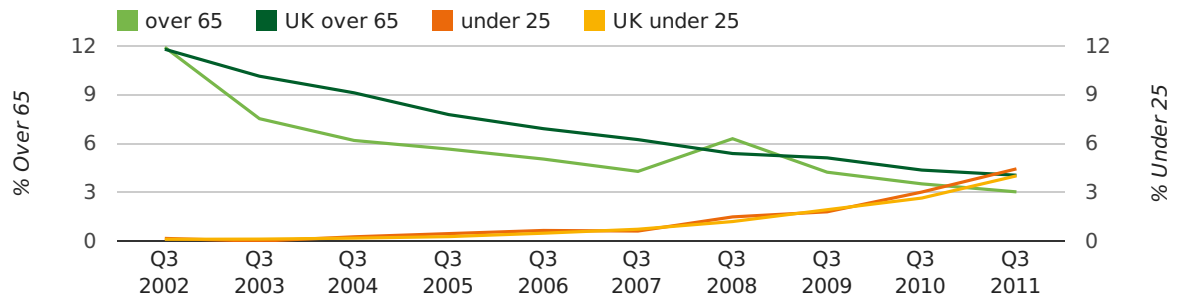
Quarterly Data (Q3 Jul-Sep 2011)

The average age of a director in the third quarter of 2011 was 42.1.

The percentage of directors under the age of 25 was 4.5% compared to the UK figure of 4.0%.

The percentage of directors over the age of 65 was 3.0% compared to the UK figure of 4.1%.

director age by quarter

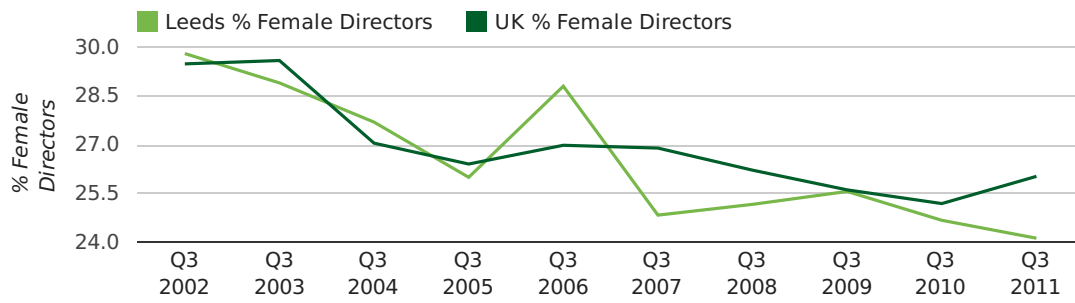


Quarterly Data (Q3 Jul-Sep 2011)

The record third quarter for female directors in Leeds was in 1862 when 50.0% of all directors were female.

24.1% of all director appointments in Leeds in the third quarter of 2011 were female. This compares to a UK average of 26.0% for the same period.

director gender by quarter



Previous 12 months (Sep 2010-Sep 2011)

Excluding: LIMITED, LTD, &, UK, SERVICES, THE, (UK), AND, LTD., A, LLP, SOLUTIONS, COMPANY, OF.

WORD	PERCENTAGE	UK WORD	UK PERCENTAGE
MANAGEMENT	2.02%	CONSULTING	5.11%
LEEDS	1.96%	MANAGEMENT	4.75%
CONSULTING	1.41%	CONSULTANCY	3.19%
(LEEDS)	1.31%	PROPERTY	2.41%
PROPERTY	1.25%	TRADING	2.06%
CONSULTANCY	1.19%	DESIGN	1.94%
(YORKSHIRE)	0.82%	ASSOCIATES	1.85%
CARE	0.74%	BUSINESS	1.82%
YORKSHIRE	0.72%	CONSULTANTS	1.76%
BUSINESS	0.67%	ENGINEERING	1.74%
J	0.63%	MEDIA	1.72%
PROPERTIES	0.63%	CONSTRUCTION	1.72%
MEDICAL	0.63%	LONDON	1.63%
CONSTRUCTION	0.61%	J	1.47%
ASSOCIATES	0.59%	GLOBAL	1.46%
MEDIA	0.59%	INVESTMENTS	1.43%
ENERGY	0.59%	CARE	1.42%
DESIGN	0.57%	IT	1.38%
TRADING	0.55%	BUILDING	1.30%
CONSULTANTS	0.55%	PROPERTIES	1.28%
M	0.55%	ELECTRICAL	1.27%
CLEANING	0.53%	M	1.25%
INVESTMENTS	0.51%	ENERGY	1.22%
D	0.51%	TRAINING	1.21%
ELECTRICAL	0.49%	S	1.21%

Previous 36 months, excluding companies less than 12 months old

SIC CODE	NUMBER OF COMPANIES	UK COMPANIES
None Supplied	1,880	204,493
7487 - Other business activities	406	65,177
9999 - Dormant Company	178	22,587
82990 - Other business support service activities not elsewhere classified	158	29,245
70229 - Management consultancy activities other than financial management	133	15,760
7414 - Business & management consultancy	130	14,755
99999 - Dormant Company	122	18,281
62020 - Information technology consultancy activities	98	10,137
7499 - Non-trading company	98	11,543
7222 - Other software consultancy and supply	91	8,345
7260 - Other computer related activities	91	8,686
74990 - Non-trading company	83	8,064
9305 - Other service activities	77	10,525
5530 - Restaurants	61	5,640
74909 - Other professional, scientific and technical activities not elsewhere classified	60	7,551
86900 - Other human health activities	57	4,019
96090 - Other service activities not elsewhere classified	56	10,018
7450 - Labour recruitment	52	2,129
62090 - Other information technology service activities	48	6,798
4521 - General construction & civil engineering	45	6,321