

# Leicestershire

q1 2012 business confidence report



## headlines

- Q1 2012 saw a new record in company registrations in Leicestershire when compared to any previous Q1.
- Q1 2012 was a record quarter for company registrations in Leicestershire when compared to any quarter in history.
- March 2012 saw a new record in company registrations in Leicestershire when compared to any previous March.
- March 2012 was a record month for company registrations in Leicestershire when compared to any month in history.
- February 2012 saw a new record in company registrations in Leicestershire when compared to any previous February.
- January 2012 saw a new record in company registrations in Leicestershire when compared to any previous January.
- February 2012 saw a new record in company closures in Leicestershire when compared to any previous February.

## contents

new company registrations

closed companies (dissolved)

net company growth

uk company share

director age

director gender

naming trends

sic data

### Quarterly Data (Q1 Jan-Mar 2012)

Q1 2012 saw a new record in company registrations in Leicestershire when compared to any previous Q1.

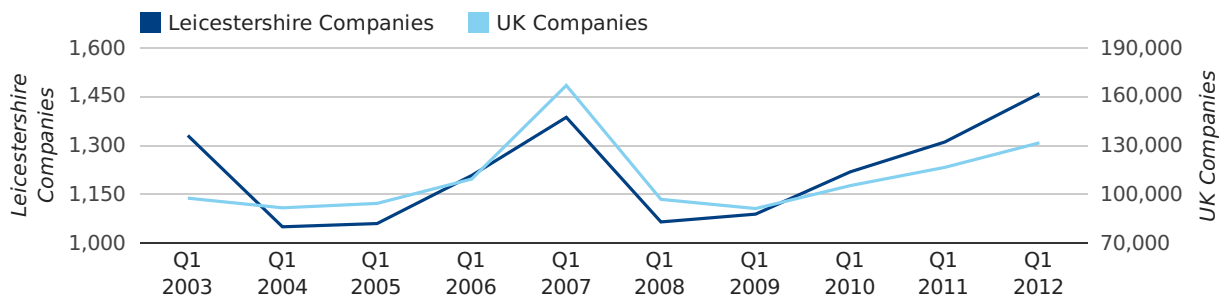
Q1 2012 was a record quarter for company registrations in Leicestershire when compared to any quarter in history.

A total of 1,459 companies were registered in Leicestershire during the first quarter of 2012 (Jan 2012 - Mar 2012).

This figure is an increase of 11.4% versus the same period last year (Q1 2011). This figure compares equally to the UK as a whole, which saw an increase of 13.0% against the same period last year.

FIRST QUARTER (JAN 2012 - MAR 2012)	LEICESTERSHIRE	UK
2012	1,459	131,491
2011	1,310	116,391
% CHANGE	11.4%	13.0%
RECORD YEAR	2012 (1,459)	2007 (166,814)

### new companies by quarter



## Monthly Data (Jan, Feb & Mar 2012)

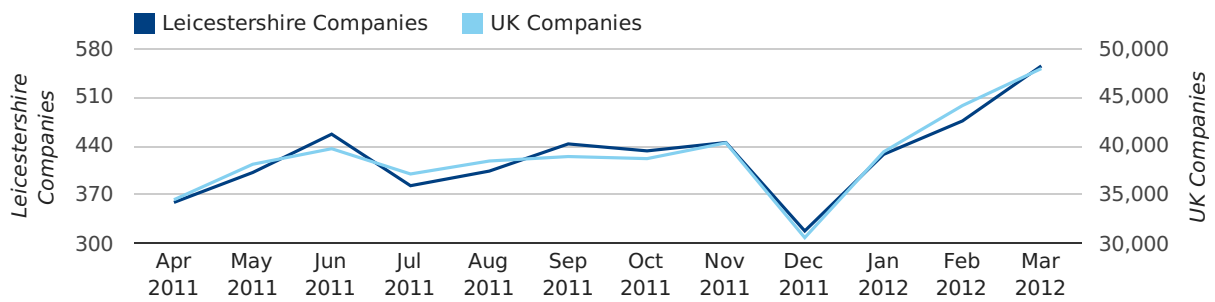
March 2012 saw a new record in company registrations in Leicestershire when compared to any previous March.

March 2012 was a record month for company registrations in Leicestershire when compared to any month in history.

February 2012 saw a new record in company registrations in Leicestershire when compared to any previous February.

January 2012 saw a new record in company registrations in Leicestershire when compared to any previous January.

### new companies by month



	JANUARY	FEBRUARY	MARCH
NEW COMPANIES IN 2012	428	476	555
NEW COMPANIES IN 2011	362	439	509
% CHANGE	18.2%	8.4%	9.0%
RECORD YEAR	2012 (428)	2012 (476)	2012 (555)

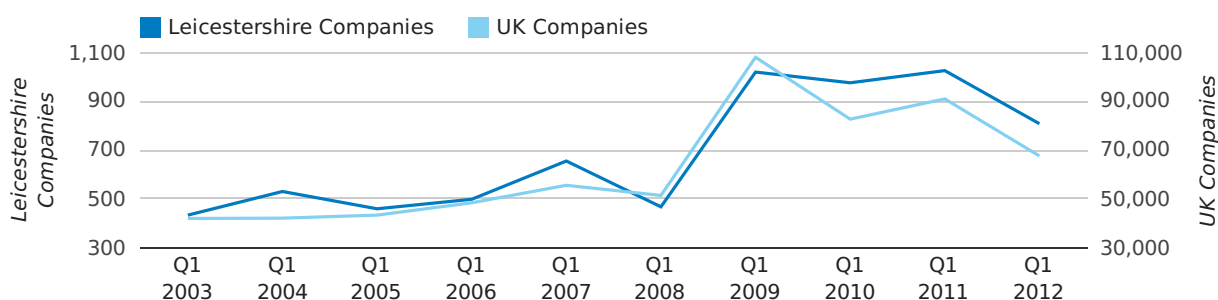
### Quarterly Data (Q1 Jan-Mar 2012)

A total of 808 companies were dissolved in Leicestershire during the first quarter of 2012 (Jan 2012 - Mar 2012).

This figure is a decrease of 21.2% versus the same period last year (Q1 2011). This figure compares poorly to the UK as a whole, which saw a decrease of 25.7% against the same period last year.

FIRST QUARTER (JAN 2012 - MAR 2012)	LEICESTERSHIRE	UK
2012	808	67,576
2011	1,026	90,986
% CHANGE	-21.2%	-25.7%
RECORD YEAR	2011 (1,026)	2009 (108,060)

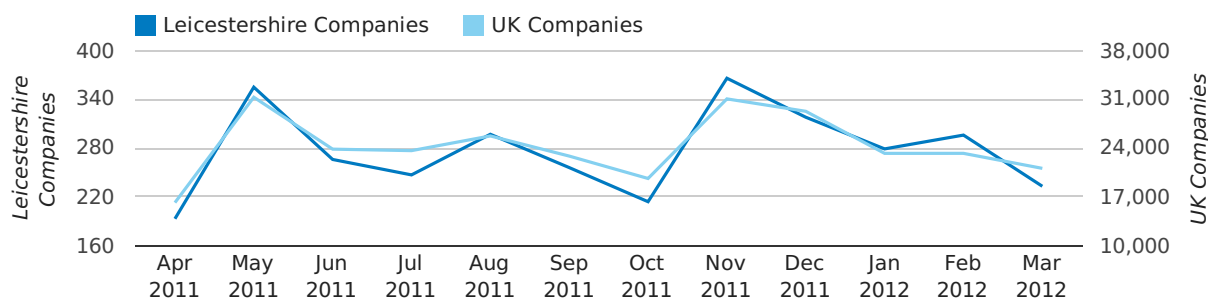
### dissolved companies by quarter



### Monthly Data (Jan, Feb & Mar 2012)

February 2012 saw a new record in company closures in Leicestershire when compared to any previous February.

### dissolved companies by month



	JANUARY	FEBRUARY	MARCH
CLOSED COMPANIES IN 2012	279	296	233
CLOSED COMPANIES IN 2011	442	290	294
% CHANGE	-36.9%	2.1%	-21%
RECORD YEAR	2011 (442)	2012 (296)	2009 (618)

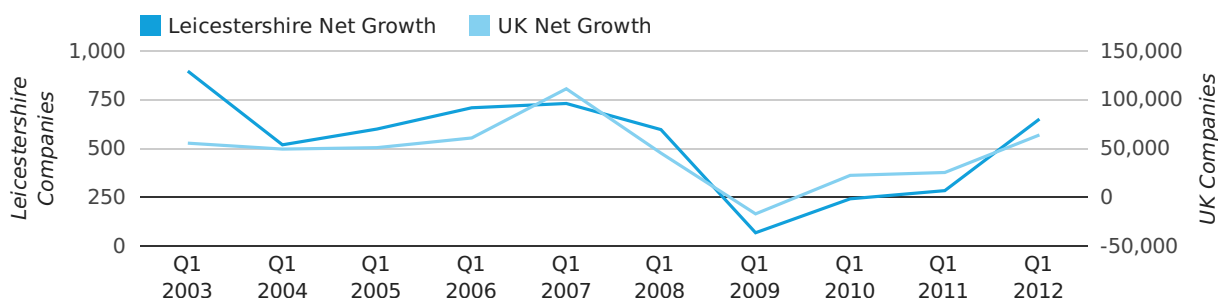
### Quarterly Data (Q1 Jan-Mar 2012)

Net company growth for Leicestershire during the first quarter of 2012 (Jan 2012 - Mar 2012) was 651 companies.

This represents an increase of 129.2% on the same period last year.

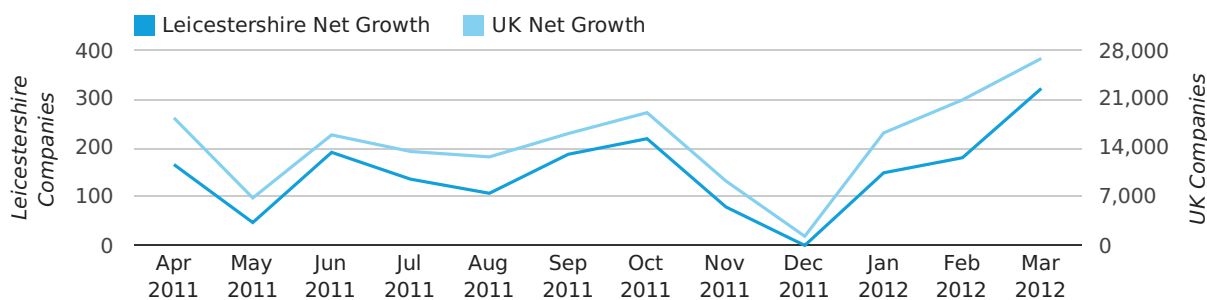
FIRST QUARTER (JAN 2012 - MAR 2012)	LEICESTERSHIRE	UK
2012	651	63,915
2011	284	25,405
% CHANGE	129.2%	151.6%
RECORD YEAR	2003 (897)	2007 (111,282)

### net growth by quarter



### Monthly Data (Jan, Feb & Mar 2012)

### net growth by month



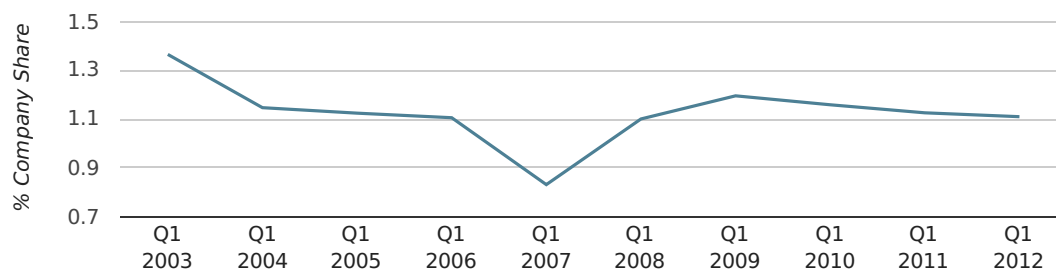
	JANUARY	FEBRUARY	MARCH
NET GROWTH IN 2012	149	180	322
NET GROWTH IN 2011	-80	149	215
% CHANGE	-286.3%	20.8%	49.8%
RECORD YEAR	2003 (242)	2003 (288)	2003 (367)

### Quarterly Data (Q1 Jan-Mar 2012)

In the first quarter of 2012, Leicestershire formed 1.1% of all UK companies.

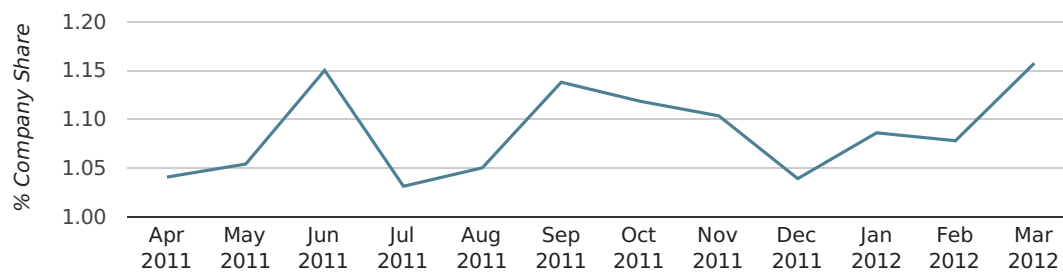
FIRST QUARTER (JAN 2012 - MAR 2012)	LEICESTERSHIRE
2012	1.1%
2011	1.1%
2010	1.2%
2009	1.2%
2008	1.1%
RECORD YEAR (SINCE 1960)	1970 (1.9%)

### company share by quarter



### Monthly Data (Jan, Feb & Mar 2012)

### company share by month



	JANUARY	FEBRUARY	MARCH
UK FORMATION SHARE IN 2012	1.1%	1.1%	1.2%
UK FORMATION SHARE IN 2011	1.1%	1.2%	1.1%
% CHANGE	1.4%	-7.3%	2.0%
RECORD YEAR	1971 (2.4%)	1968 (3.0%)	1961 (1.9%)

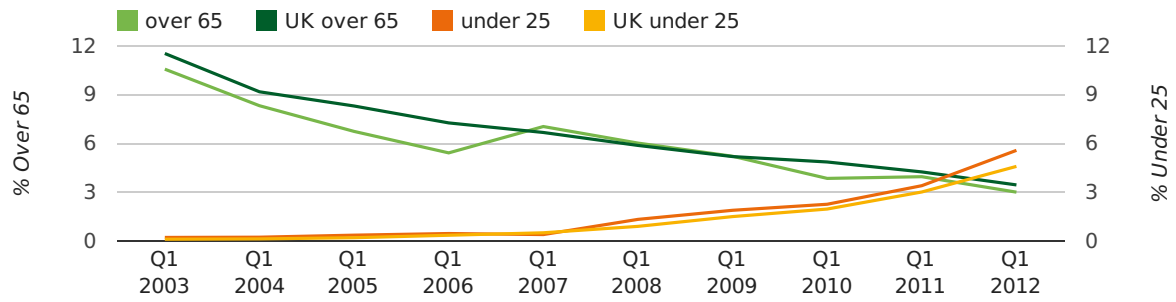
### Quarterly Data (Q1 Jan-Mar 2012)

The average age of a director in the first quarter of 2012 was 42.7.

The percentage of directors under the age of 25 was 5.6% compared to the UK figure of 4.6%.

The percentage of directors over the age of 65 was 3.0% compared to the UK figure of 3.5%.

#### director age by quarter





## Previous 12 months (Mar 2011-Mar 2012)

Excluding: LIMITED, LTD, &amp;, UK, SERVICES, THE, (UK), AND, LTD., A, LLP, SOLUTIONS, COMPANY, OF.

WORD	PERCENTAGE	UK WORD	UK PERCENTAGE
CONSULTING	1.62%	CONSULTING	5.07%
MANAGEMENT	1.61%	MANAGEMENT	4.74%
(LEICESTER)	1.49%	CONSULTANCY	3.30%
LEICESTER	1.42%	PROPERTY	2.37%
CONSULTANCY	1.23%	TRADING	2.07%
PROPERTY	0.98%	DESIGN	1.93%
TRADING	0.91%	ENGINEERING	1.86%
CONSULTANTS	0.88%	ASSOCIATES	1.84%
J	0.81%	CONSULTANTS	1.79%
DESIGN	0.78%	BUSINESS	1.73%
CARE	0.71%	MEDIA	1.72%
TRAINING	0.69%	CONSTRUCTION	1.72%
BUSINESS	0.69%	LONDON	1.66%
ELECTRICAL	0.68%	J	1.54%
S	0.68%	INVESTMENTS	1.51%
INVESTMENTS	0.64%	GLOBAL	1.50%
M	0.64%	IT	1.40%
IT	0.63%	CARE	1.34%
MEDIA	0.61%	PROPERTIES	1.31%
R	0.59%	ELECTRICAL	1.27%
ASSOCIATES	0.59%	M	1.27%
CONSTRUCTION	0.56%	BUILDING	1.24%
GLOBAL	0.56%	ENERGY	1.20%
ENGINEERING	0.56%	S	1.20%
COMMUNITY	0.52%	ENTERPRISES	1.19%

## Previous 36 months, excluding companies less than 12 months old

SIC CODE	NUMBER OF COMPANIES	UK COMPANIES
None Supplied	2,129	216,665
7487 - Other business activities	490	52,735
99999 - Dormant Company	261	25,084
82990 - Other business support service activities not elsewhere classified	249	35,233
70229 - Management consultancy activities other than financial management	232	19,704
96090 - Other service activities not elsewhere classified	219	13,637
9999 - Dormant Company	201	18,617
7414 - Business & management consultancy	132	12,113
62020 - Information technology consultancy activities	105	14,303
9305 - Other service activities	100	8,818
74909 - Other professional, scientific and technical activities not elsewhere classified	94	9,892
86900 - Other human health activities	82	5,066
49410 - Freight transport by road	80	2,781
7260 - Other computer related activities	71	7,154
62090 - Other information technology service activities	69	8,145
7499 - Non-trading company	66	9,102
74990 - Non-trading company	66	9,729
69201 - Accounting and auditing activities	62	4,132
47910 - Retail sale via mail order houses or via Internet	59	3,439
43390 - Other building completion and finishing	58	3,228