

# London

q3 2011 business confidence report



## headlines

- Q3 2011 saw a new record in company registrations in London when compared to any previous Q3.
- September 2011 saw a new record in company registrations in London when compared to any previous September.
- August 2011 saw a new record in company registrations in London when compared to any previous August.
- July 2011 saw a new record in company registrations in London when compared to any previous July.
- Q3 2011 saw a new record in net growth in London when compared to any previous Q3.
- September 2011 saw a new record in net growth in London when compared to any previous September.

## contents

new company registrations

closed companies (dissolved)

net company growth

uk company share

director age

director gender

naming trends

sic data

### Quarterly Data (Q3 Jul-Sep 2011)

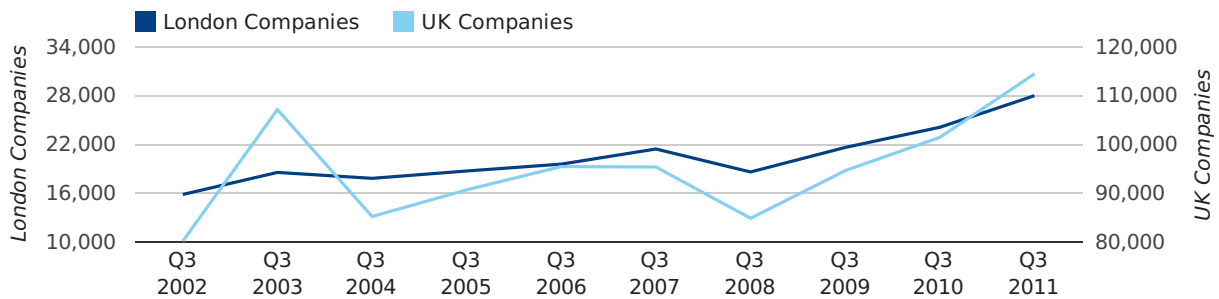
Q3 2011 saw a new record in company registrations in London when compared to any previous Q3.

A total of 28,025 companies were registered in London during the third quarter of 2011 (Jul 2011 - Sep 2011).

This figure is an increase of 16.1% versus the same period last year (Q3 2010). This figure compares well to the UK as a whole, which saw an increase of 12.8% against the same period last year.

THIRD QUARTER (JUL 2011 - SEP 2011)	LONDON	UK
2011	28,025	114,512
2010	24,139	101,492
% CHANGE	16.1%	12.8%
RECORD YEAR	2011 (28,025)	2011 (114,512)

### new companies by quarter



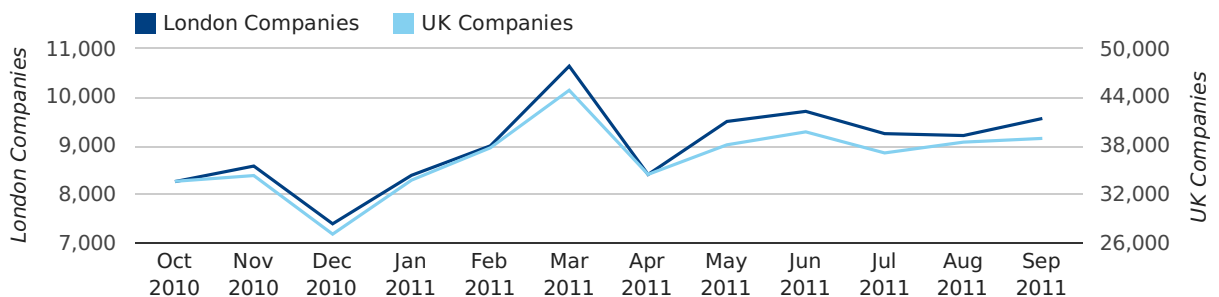
### Monthly Data (Jul, Aug & Sep 2011)

September 2011 saw a new record in company registrations in London when compared to any previous September.

August 2011 saw a new record in company registrations in London when compared to any previous August.

July 2011 saw a new record in company registrations in London when compared to any previous July.

### new companies by month



	JULY	AUGUST	SEPTEMBER
NEW COMPANIES IN 2011	9,251	9,212	9,562
NEW COMPANIES IN 2010	8,094	7,738	8,307
% CHANGE	14.3%	19.0%	15.1%
RECORD YEAR	2011 (9,251)	2011 (9,212)	2011 (9,562)



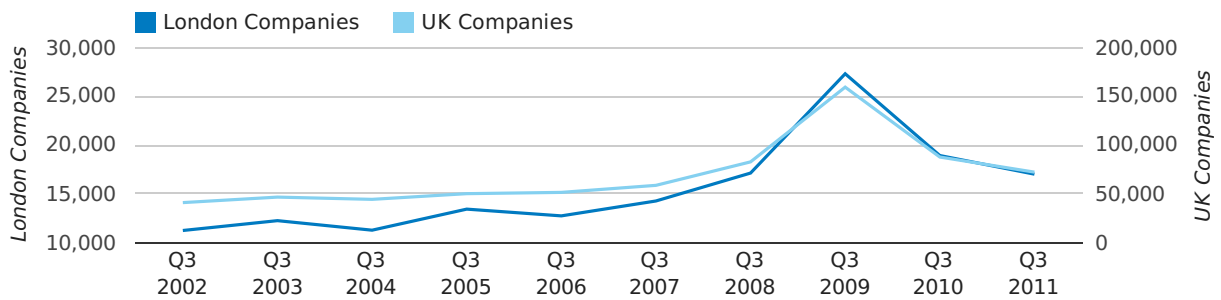
### Quarterly Data (Q3 Jul-Sep 2011)

A total of 17,013 companies were dissolved in London during the third quarter of 2011 (Jul 2011 - Sep 2011).

This figure is a decrease of 10.1% versus the same period last year (Q3 2010). This figure compares poorly to the UK as a whole, which saw a decrease of 17.6% against the same period last year.

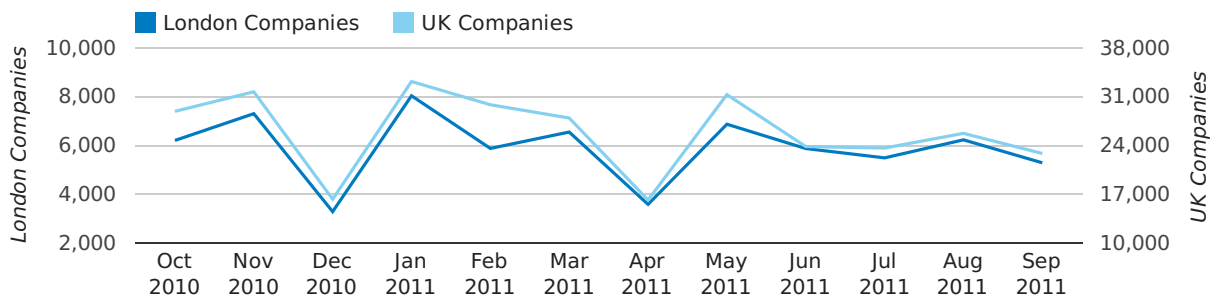
THIRD QUARTER (JUL 2011 - SEP 2011)	LONDON	UK
2011	17,013	72,230
2010	18,925	87,705
% CHANGE	-10.1%	-17.6%
RECORD YEAR	2009 (27,313)	2009 (159,401)

### dissolved companies by quarter



### Monthly Data (Jul, Aug & Sep 2011)

#### dissolved companies by month



	JULY	AUGUST	SEPTEMBER
CLOSED COMPANIES IN 2011	5,492	6,232	5,289
CLOSED COMPANIES IN 2010	5,596	7,219	6,110
% CHANGE	-1.9%	-13.7%	-13%
RECORD YEAR	2002 (6,179)	2008 (12,696)	2009 (13,861)

### Quarterly Data (Q3 Jul-Sep 2011)

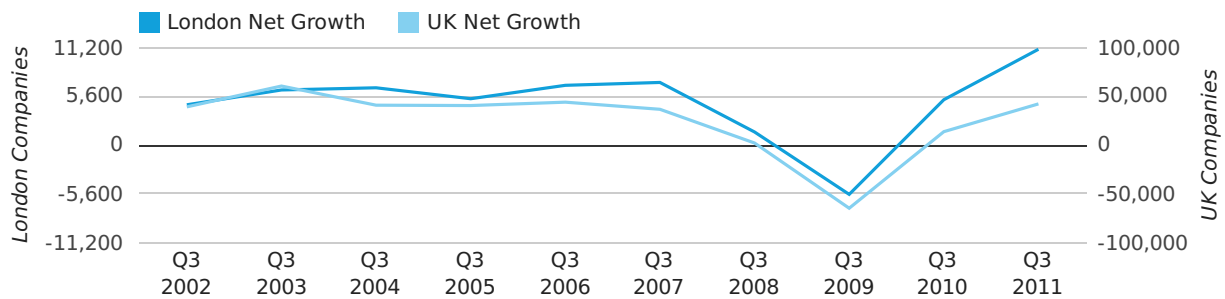
Q3 2011 saw a new record in net growth in London when compared to any previous Q3.

Net company growth for London during the third quarter of 2011 (Jul 2011 - Sep 2011) was 11,012 companies.

This represents an increase of 111.2% on the same period last year.

THIRD QUARTER (JUL 2011 - SEP 2011)	LONDON	UK
2011	11,012	42,282
2010	5,214	13,787
% CHANGE	111.2%	206.7%
RECORD YEAR	2011 (11,012)	2003 (60,597)

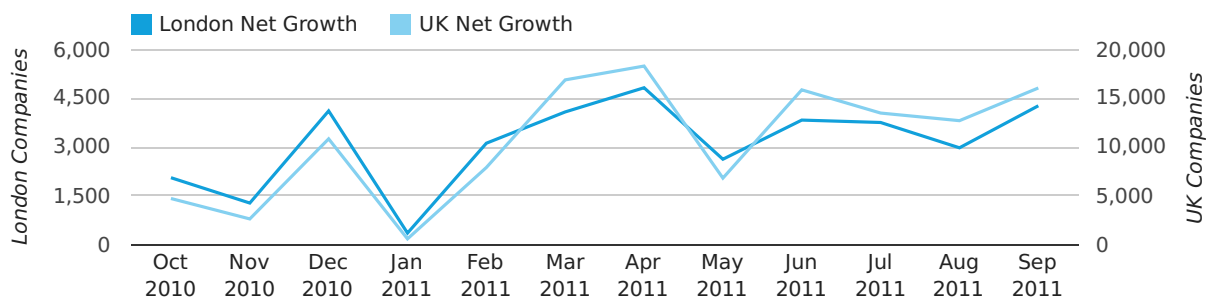
### net growth by quarter



### Monthly Data (Jul, Aug & Sep 2011)

September 2011 saw a new record in net growth in London when compared to any previous September.

### net growth by month



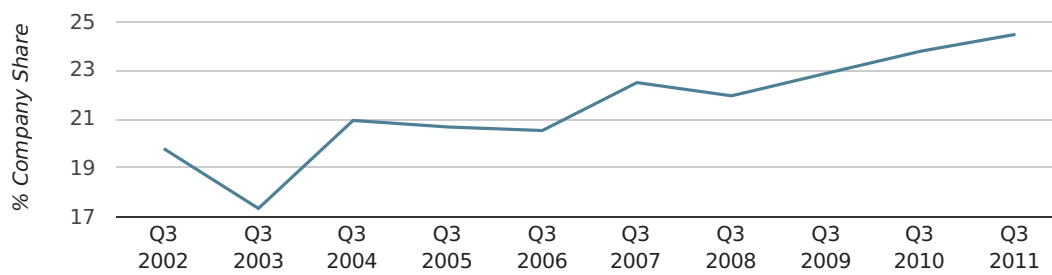
	JULY	AUGUST	SEPTEMBER
NET GROWTH IN 2011	3,759	2,980	4,273
NET GROWTH IN 2010	2,498	519	2,197
% CHANGE	50.5%	474.2%	94.5%
RECORD YEAR	2008 (4,846)	1995 (3,039)	2011 (4,273)

### Quarterly Data (Q3 Jul-Sep 2011)

In the third quarter of 2011, London formed 24.5% of all UK companies.

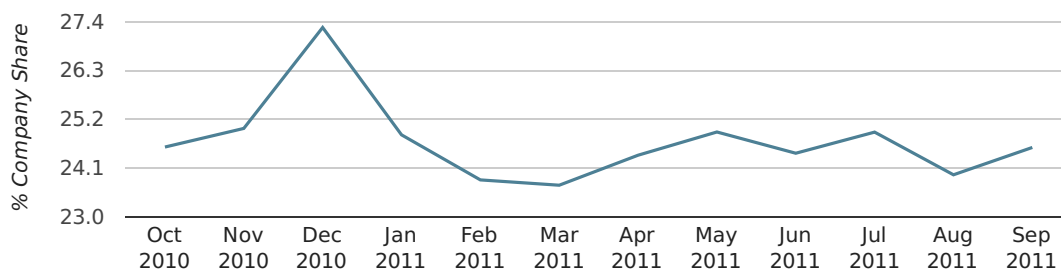
THIRD QUARTER (JUL 2011 - SEP 2011)	LONDON
2011	24.5%
2010	23.8%
2009	22.9%
2008	22.0%
2007	22.5%
RECORD YEAR (SINCE 1960)	1998 (27.0%)

### company share by quarter



### Monthly Data (Jul, Aug & Sep 2011)

### company share by month



	JULY	AUGUST	SEPTEMBER
UK FORMATION SHARE IN 2011	24.9%	24.0%	24.6%
UK FORMATION SHARE IN 2010	23.8%	23.9%	23.6%
% CHANGE	4.6%	0.2%	4.0%
RECORD YEAR	2001 (27.3%)	1998 (27.1%)	1969 (27.8%)

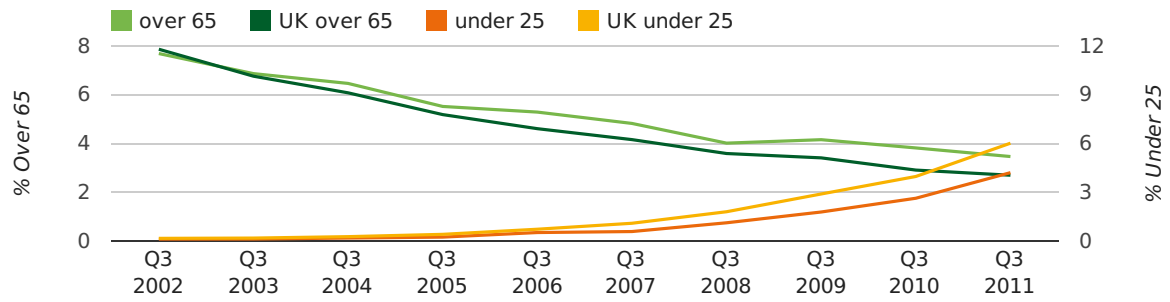
### Quarterly Data (Q3 Jul-Sep 2011)

The average age of a director in the third quarter of 2011 was 41.1.

The percentage of directors under the age of 25 was 4.2% compared to the UK figure of 4.0%.

The percentage of directors over the age of 65 was 3.5% compared to the UK figure of 4.1%.

#### director age by quarter



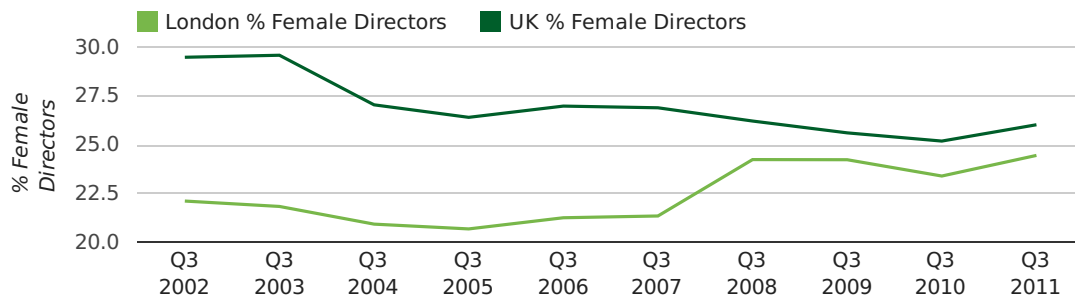


### Quarterly Data (Q3 Jul-Sep 2011)

The record third quarter for female directors in London was in 1862 when 50.0% of all directors were female.

24.5% of all director appointments in London in the third quarter of 2011 were female. This compares to a UK average of 26.0% for the same period.

### director gender by quarter



## Previous 12 months (Sep 2010-Sep 2011)

Excluding: LIMITED, LTD, &amp;, UK, SERVICES, THE, (UK), AND, LTD., A, LLP, SOLUTIONS, COMPANY, OF.

WORD	PERCENTAGE	UK WORD	UK PERCENTAGE
CONSULTING	3.93%	CONSULTING	5.11%
MANAGEMENT	3.04%	MANAGEMENT	4.75%
LONDON	2.66%	CONSULTANCY	3.19%
TRADING	1.92%	PROPERTY	2.41%
GLOBAL	1.66%	TRADING	2.06%
CONSULTANCY	1.65%	DESIGN	1.94%
INVEST	1.62%	ASSOCIATES	1.85%
CAPITAL	1.61%	BUSINESS	1.82%
MEDIA	1.53%	CONSULTANTS	1.76%
INTERNATIONAL	1.43%	ENGINEERING	1.74%
INVESTMENTS	1.39%	MEDIA	1.72%
PROPERTY	1.34%	CONSTRUCTION	1.72%
BUSINESS	1.22%	LONDON	1.63%
PRODUCTIONS	1.16%	J	1.47%
DESIGN	1.04%	GLOBAL	1.46%
ASSOCIATES	1.02%	INVESTMENTS	1.43%
CONSULTANTS	0.96%	CARE	1.42%
PARTNERS	0.94%	IT	1.38%
INVESTMENT	0.92%	BUILDING	1.30%
GROUP	0.91%	PROPERTIES	1.28%
PROPERTIES	0.88%	ELECTRICAL	1.27%
CO.,	0.87%	M	1.25%
CONSTRUCTION	0.85%	ENERGY	1.22%
SECURITY	0.78%	TRAINING	1.21%
IT	0.77%	S	1.21%

## Previous 36 months, excluding companies less than 12 months old

SIC CODE	NUMBER OF COMPANIES	UK COMPANIES
None Supplied	58,343	204,493
7487 - Other business activities	16,243	65,177
9999 - Dormant Company	7,882	22,587
82990 - Other business support service activities not elsewhere classified	7,171	29,245
99999 - Dormant Company	5,808	18,281
7414 - Business & management consultancy	3,253	14,755
70229 - Management consultancy activities other than financial management	2,915	15,760
9305 - Other service activities	2,737	10,525
7499 - Non-trading company	2,564	11,543
96090 - Other service activities not elsewhere classified	2,470	10,018
62020 - Information technology consultancy activities	2,142	10,137
7222 - Other software consultancy and supply	1,986	8,345
7260 - Other computer related activities	1,848	8,686
74990 - Non-trading company	1,795	8,064
62090 - Other information technology service activities	1,382	6,798
5530 - Restaurants	1,379	5,640
74909 - Other professional, scientific and technical activities not elsewhere classified	1,259	7,551
64999 - Financial intermediation not elsewhere classified	906	2,625
4521 - General construction & civil engineering	878	6,321
68209 - Other letting and operating of own or leased real estate	764	3,614