

# Mansfield

q3 2011 business confidence report



## headlines

- Q3 2011 saw a new record in company registrations in Mansfield when compared to any previous Q3.
- August 2011 saw a new record in company registrations in Mansfield when compared to any previous August.

## contents

new company registrations

closed companies (dissolved)

net company growth

uk company share

director age

director gender

naming trends

sic data

### Quarterly Data (Q3 Jul-Sep 2011)

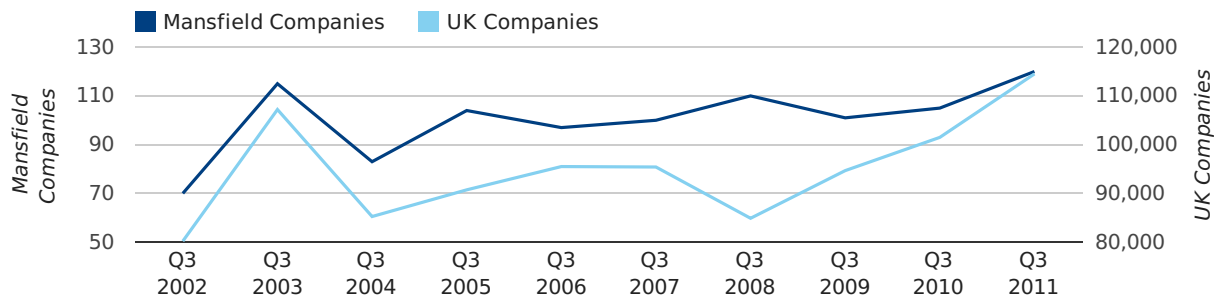
Q3 2011 saw a new record in company registrations in Mansfield when compared to any previous Q3.

A total of 120 companies were registered in Mansfield during the third quarter of 2011 (Jul 2011 - Sep 2011).

This figure is an increase of 14.3% versus the same period last year (Q3 2010). This figure compares equally to the UK as a whole, which saw an increase of 12.8% against the same period last year.

THIRD QUARTER (JUL 2011 - SEP 2011)	MANSFIELD	UK
2011	120	114,512
2010	105	101,492
% CHANGE	14.3%	12.8%
RECORD YEAR	2011 (120)	2011 (114,512)

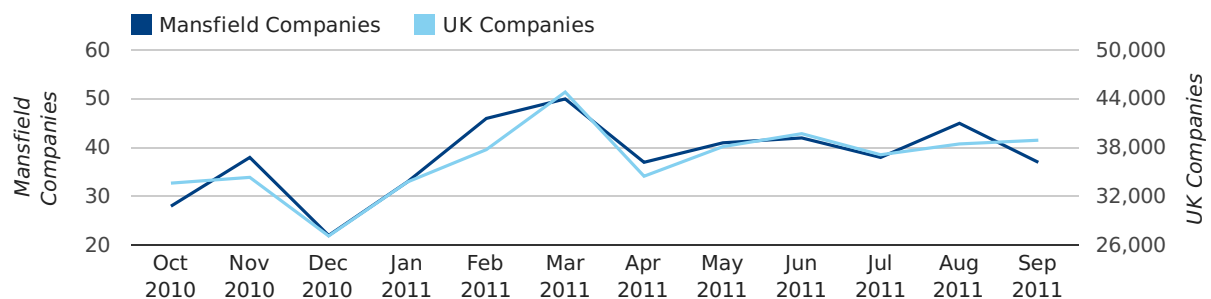
### new companies by quarter



### Monthly Data (Jul, Aug & Sep 2011)

August 2011 saw a new record in company registrations in Mansfield when compared to any previous August.

### new companies by month



	JULY	AUGUST	SEPTEMBER
NEW COMPANIES IN 2011	38	45	37
NEW COMPANIES IN 2010	41	35	29
% CHANGE	-7.3%	28.6%	27.6%
RECORD YEAR	2010 (41)	2011 (45)	2008 (45)

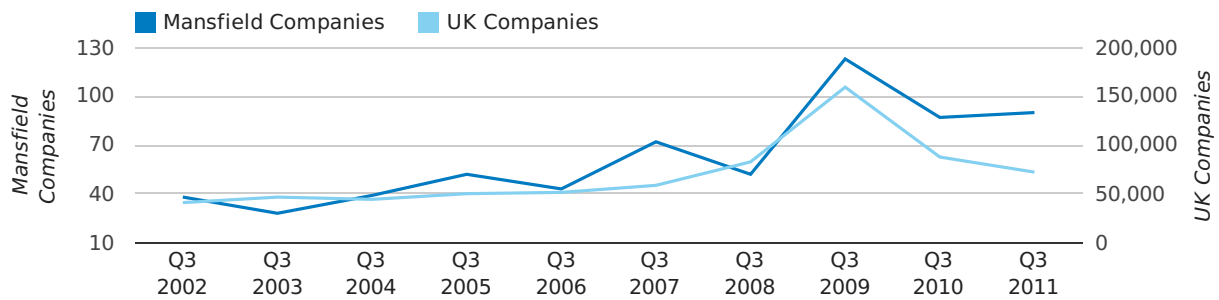
### Quarterly Data (Q3 Jul-Sep 2011)

A total of 90 companies were dissolved in Mansfield during the third quarter of 2011 (Jul 2011 - Sep 2011).

This figure is an increase of 3.4% versus the same period last year (Q3 2010). This figure compares poorly to the UK as a whole, which saw a decrease of 17.6% against the same period last year.

THIRD QUARTER (JUL 2011 - SEP 2011)	MANSFIELD	UK
2011	90	72,230
2010	87	87,705
% CHANGE	3.4%	-17.6%
RECORD YEAR	2009 (123)	2009 (159,401)

### dissolved companies by quarter



### Monthly Data (Jul, Aug & Sep 2011)

### dissolved companies by month



	JULY	AUGUST	SEPTEMBER
CLOSED COMPANIES IN 2011	20	39	31
CLOSED COMPANIES IN 2010	25	30	32
% CHANGE	-20.0%	30.0%	-3%
RECORD YEAR	2009 (30)	2008 (41)	2009 (59)

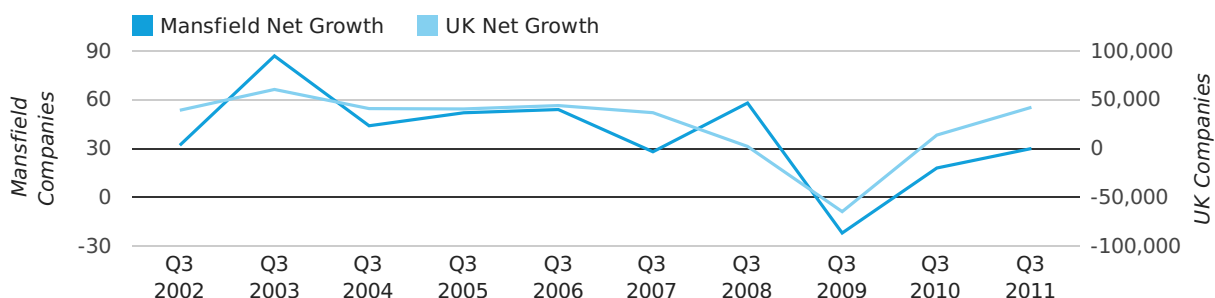
### Quarterly Data (Q3 Jul-Sep 2011)

Net company growth for Mansfield during the third quarter of 2011 (Jul 2011 - Sep 2011) was 30 companies.

This represents an increase of 66.7% on the same period last year.

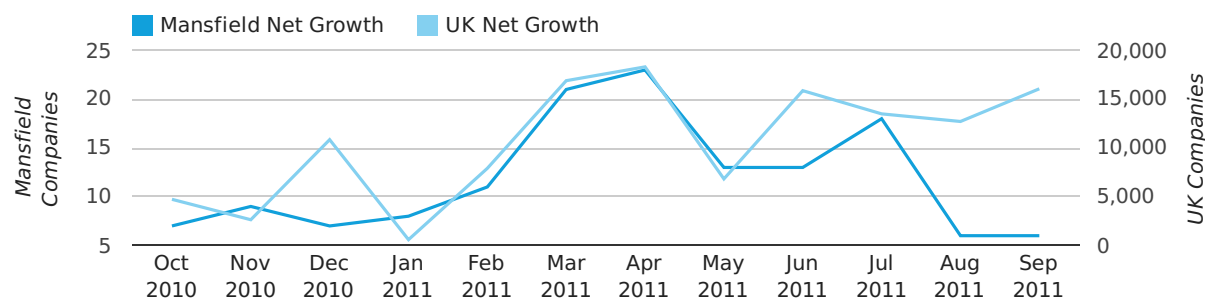
THIRD QUARTER (JUL 2011 - SEP 2011)	MANSFIELD	UK
2011	30	42,282
2010	18	13,787
% CHANGE	66.7%	206.7%
RECORD YEAR	2003 (87)	2003 (60,597)

### net growth by quarter



### Monthly Data (Jul, Aug & Sep 2011)

### net growth by month



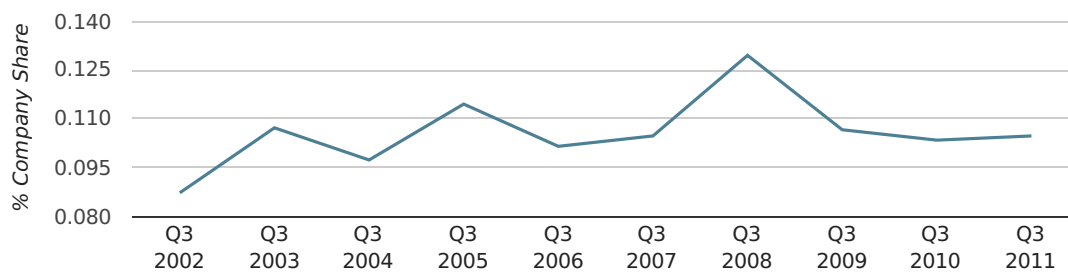
	JULY	AUGUST	SEPTEMBER
NET GROWTH IN 2011	18	6	6
NET GROWTH IN 2010	16	5	-3
% CHANGE	12.5%	20.0%	-300.0%
RECORD YEAR	2008 (35)	2003 (27)	2008 (37)

### Quarterly Data (Q3 Jul-Sep 2011)

In the third quarter of 2011, Mansfield formed 0.1% of all UK companies.

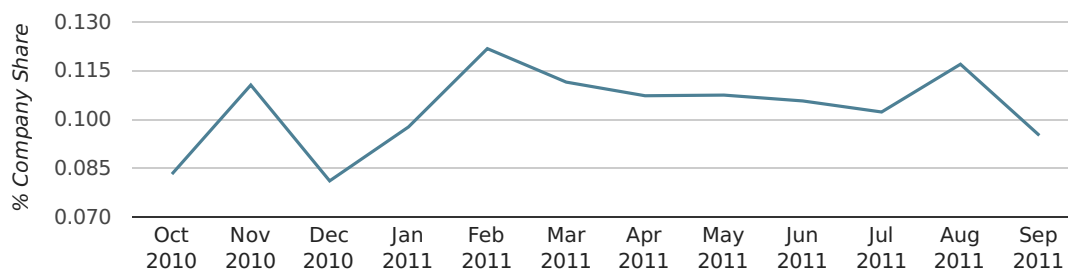
THIRD QUARTER (JUL 2011 - SEP 2011)	MANSFIELD
2011	0.1%
2010	0.1%
2009	0.1%
2008	0.1%
2007	0.1%
RECORD YEAR (SINCE 1960)	1967 (0.3%)

### company share by quarter



### Monthly Data (Jul, Aug & Sep 2011)

### company share by month



	JULY	AUGUST	SEPTEMBER
UK FORMATION SHARE IN 2011	0.1%	0.1%	0.1%
UK FORMATION SHARE IN 2010	0.1%	0.1%	0.1%
% CHANGE	-15.2%	8.2%	15.3%
RECORD YEAR	1970 (0.3%)	1967 (0.7%)	1976 (0.3%)

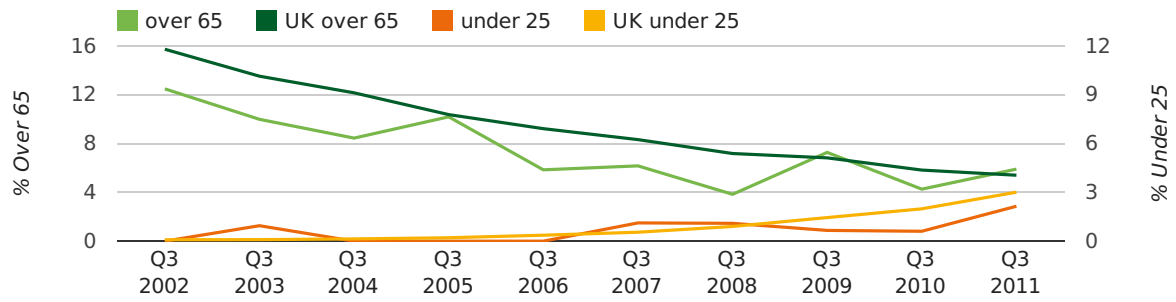
### Quarterly Data (Q3 Jul-Sep 2011)

The average age of a director in the third quarter of 2011 was 45.4.

The percentage of directors under the age of 25 was 2.2% compared to the UK figure of 4.0%.

The percentage of directors over the age of 65 was 5.9% compared to the UK figure of 4.1%.

#### director age by quarter

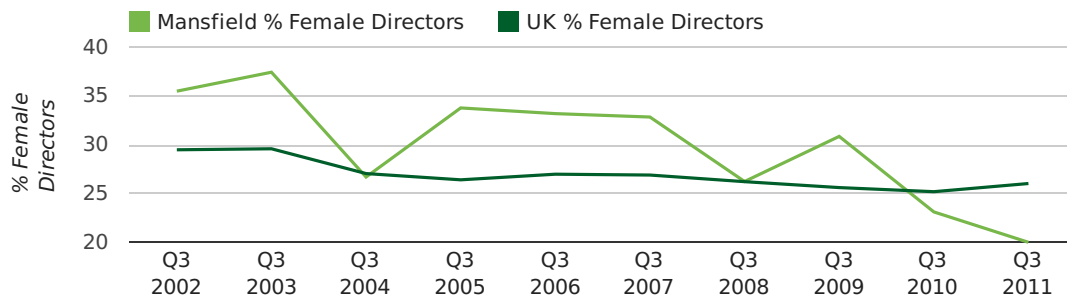


### Quarterly Data (Q3 Jul-Sep 2011)

The record third quarter for female directors in Mansfield was in 1862 when 50.0% of all directors were female.

20.0% of all director appointments in Mansfield in the third quarter of 2011 were female. This compares to a UK average of 26.0% for the same period.

### director gender by quarter





## Previous 12 months (Sep 2010-Sep 2011)

Excluding: LIMITED, LTD, &amp;, UK, SERVICES, THE, (UK), AND, LTD., A, LLP, SOLUTIONS, COMPANY, OF.

WORD	PERCENTAGE	UK WORD	UK PERCENTAGE
MANAGEMENT	1.70%	CONSULTING	5.11%
(MANSFIELD)	1.09%	MANAGEMENT	4.75%
SAFETY	0.97%	CONSULTANCY	3.19%
CONSTRUCTION	0.97%	PROPERTY	2.41%
CENTRE	0.97%	TRADING	2.06%
ELECTRICAL	0.97%	DESIGN	1.94%
TRAINING	0.85%	ASSOCIATES	1.85%
MANSFIELD	0.85%	BUSINESS	1.82%
CARE	0.73%	CONSULTANTS	1.76%
HOME	0.73%	ENGINEERING	1.74%
SYSTEMS	0.73%	MEDIA	1.72%
J	0.61%	CONSTRUCTION	1.72%
PLUMBING	0.61%	LONDON	1.63%
CO	0.61%	J	1.47%
CONSULTANCY	0.61%	GLOBAL	1.46%
SECURITY	0.61%	INVESTMENTS	1.43%
ENERGY	0.61%	CARE	1.42%
ENTERPRISES	0.61%	IT	1.38%
DAGA	0.61%	BUILDING	1.30%
DEVELOPMENTS	0.61%	PROPERTIES	1.28%
HOLDINGS	0.61%	ELECTRICAL	1.27%
SOLAR	0.61%	M	1.25%
MEDIA	0.48%	ENERGY	1.22%
D	0.48%	TRAINING	1.21%
HEATING	0.48%	S	1.21%

## Previous 36 months, excluding companies less than 12 months old

SIC CODE	NUMBER OF COMPANIES	UK COMPANIES
None Supplied	196	204,493
7487 - Other business activities	67	65,177
9999 - Dormant Company	40	22,587
99999 - Dormant Company	40	18,281
82990 - Other business support service activities not elsewhere classified	34	29,245
74990 - Non-trading company	17	8,064
7414 - Business & management consultancy	16	14,755
43999 - Other specialised construction activities not elsewhere classified	14	2,917
4521 - General construction & civil engineering	12	6,321
7499 - Non-trading company	11	11,543
70229 - Management consultancy activities other than financial management	9	15,760
7412 - Accounting, auditing; tax consult	9	2,802
74909 - Other professional, scientific and technical activities not elsewhere classified	9	7,551
62020 - Information technology consultancy activities	9	10,137
43210 - Electrical installation	8	2,938
68209 - Other letting and operating of own or leased real estate	8	3,614
45200 - Maintenance and repair of motor vehicles	8	2,179
62090 - Other information technology service activities	7	6,798
96090 - Other service activities not elsewhere classified	7	10,018
47110 - Retail sale in non-specialised stores with food, beverages or tobacco predominating	7	1,186