

Northwood

q3 2011 business confidence report



contents

new company registrations

closed companies (dissolved)

net company growth

uk company share

director age

director gender

naming trends

sic data

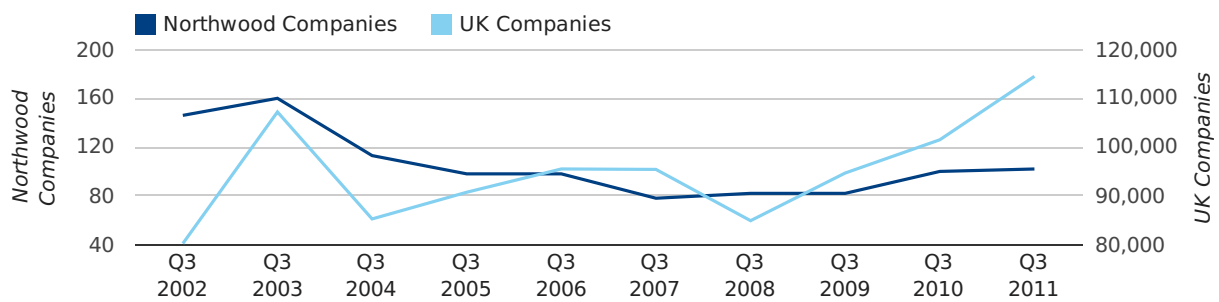
Quarterly Data (Q3 Jul-Sep 2011)

A total of 102 companies were registered in Northwood during the third quarter of 2011 (Jul 2011 - Sep 2011).

This figure is an increase of 2.0% versus the same period last year (Q3 2010). This figure compares badly to the UK as a whole, which saw an increase of 12.8% against the same period last year.

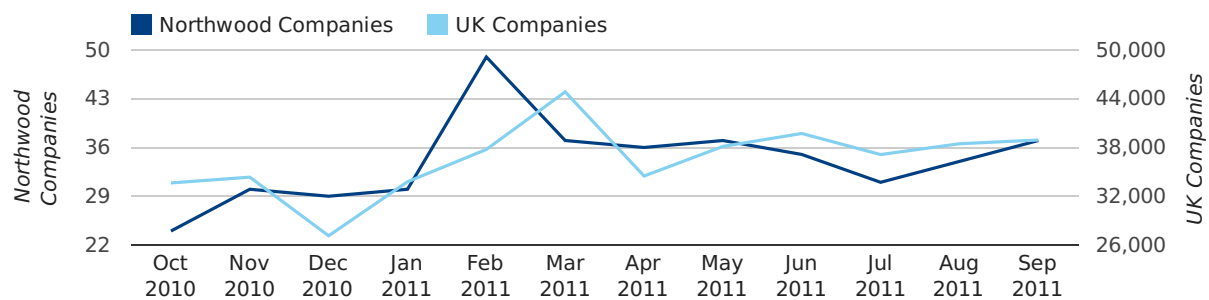
| THIRD QUARTER (JUL 2011 - SEP 2011) | NORTHWOOD | UK |
|-------------------------------------|------------|----------------|
| 2011 | 102 | 114,512 |
| 2010 | 100 | 101,492 |
| % CHANGE | 2.0% | 12.8% |
| RECORD YEAR | 2000 (398) | 2011 (114,512) |

new companies by quarter



Monthly Data (Jul, Aug & Sep 2011)

new companies by month



| | JULY | AUGUST | SEPTEMBER |
|-----------------------|------------|-----------|-----------|
| NEW COMPANIES IN 2011 | 31 | 34 | 37 |
| NEW COMPANIES IN 2010 | 34 | 26 | 40 |
| % CHANGE | -8.8% | 30.8% | -7.5% |
| RECORD YEAR | 2000 (289) | 2000 (70) | 2002 (56) |

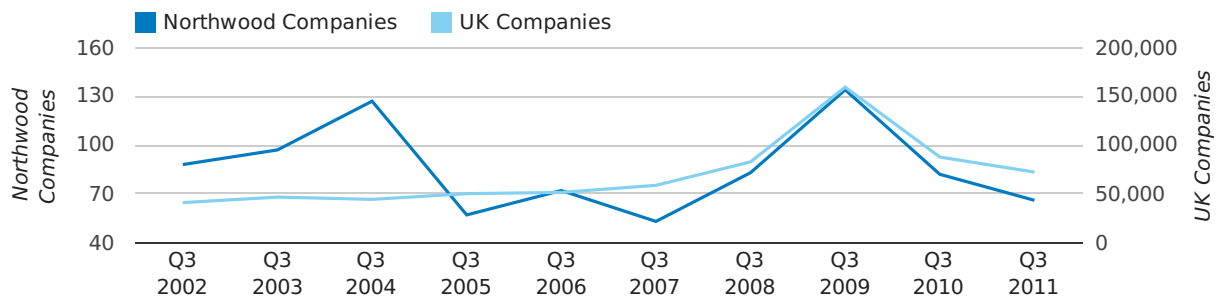
Quarterly Data (Q3 Jul-Sep 2011)

A total of 66 companies were dissolved in Northwood during the third quarter of 2011 (Jul 2011 - Sep 2011).

This figure is a decrease of 19.5% versus the same period last year (Q3 2010). This figure compares well to the UK as a whole, which saw a decrease of 17.6% against the same period last year.

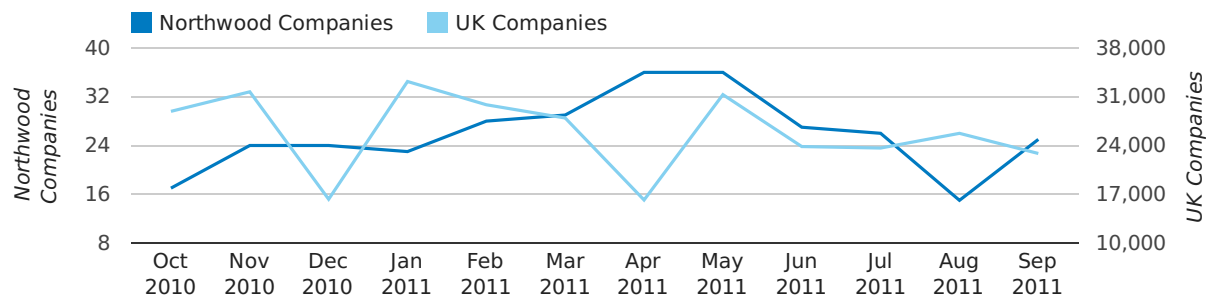
| THIRD QUARTER (JUL 2011 - SEP 2011) | NORTHWOOD | UK |
|-------------------------------------|------------|----------------|
| 2011 | 66 | 72,230 |
| 2010 | 82 | 87,705 |
| % CHANGE | -19.5% | -17.6% |
| RECORD YEAR | 2009 (134) | 2009 (159,401) |

dissolved companies by quarter



Monthly Data (Jul, Aug & Sep 2011)

dissolved companies by month



| | JULY | AUGUST | SEPTEMBER |
|--------------------------|-----------|-----------|-----------|
| CLOSED COMPANIES IN 2011 | 26 | 15 | 25 |
| CLOSED COMPANIES IN 2010 | 22 | 41 | 19 |
| % CHANGE | 18.2% | -63.4% | 32% |
| RECORD YEAR | 1997 (48) | 2004 (56) | 1999 (73) |

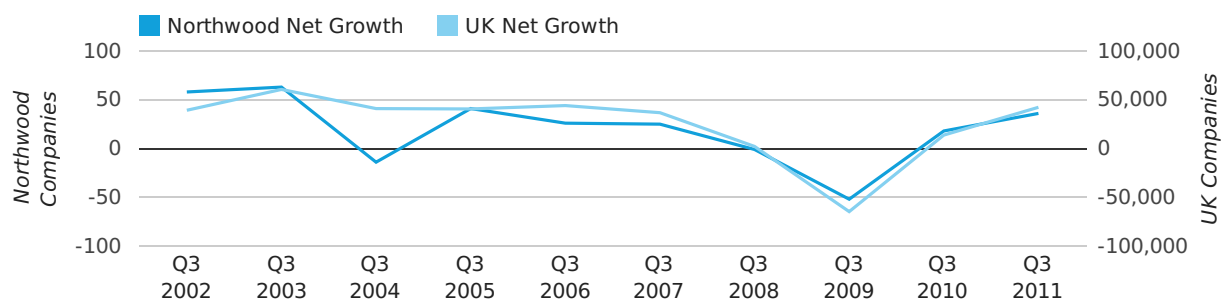
Quarterly Data (Q3 Jul-Sep 2011)

Net company growth for Northwood during the third quarter of 2011 (Jul 2011 - Sep 2011) was 36 companies.

This represents an increase of 100.0% on the same period last year.

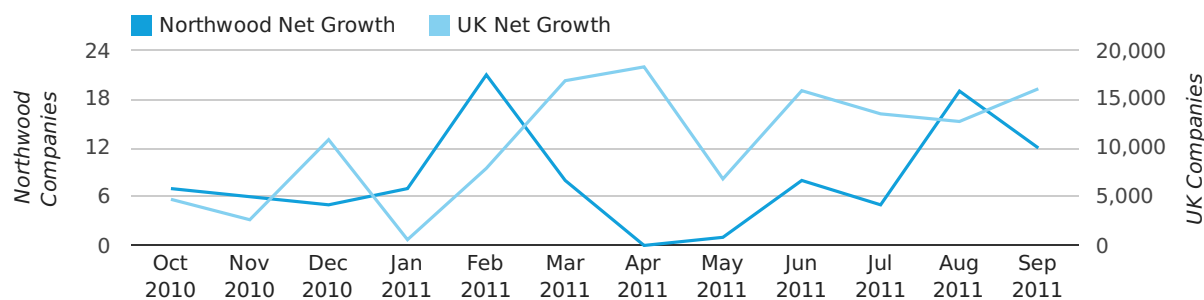
| THIRD QUARTER (JUL 2011 - SEP 2011) | NORTHWOOD | UK |
|-------------------------------------|------------|---------------|
| 2011 | 36 | 42,282 |
| 2010 | 18 | 13,787 |
| % CHANGE | 100.0% | 206.7% |
| RECORD YEAR | 2000 (309) | 2003 (60,597) |

net growth by quarter



Monthly Data (Jul, Aug & Sep 2011)

net growth by month



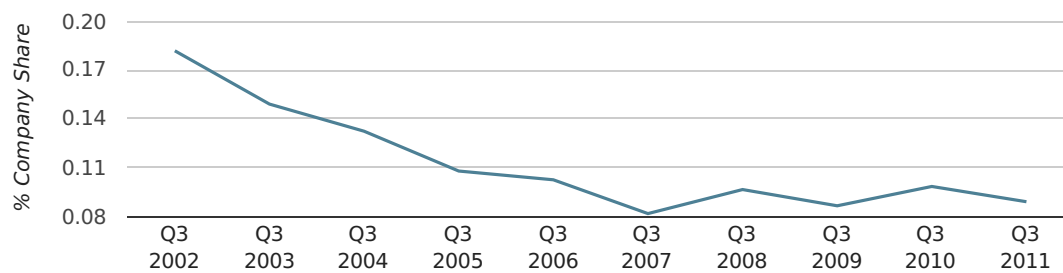
| | JULY | AUGUST | SEPTEMBER |
|--------------------|------------|-----------|-----------|
| NET GROWTH IN 2011 | 5 | 19 | 12 |
| NET GROWTH IN 2010 | 12 | -15 | 21 |
| % CHANGE | -58.3% | -226.7% | -42.9% |
| RECORD YEAR | 2000 (273) | 2000 (34) | 2002 (49) |

Quarterly Data (Q3 Jul-Sep 2011)

In the third quarter of 2011, Northwood formed 0.1% of all UK companies.

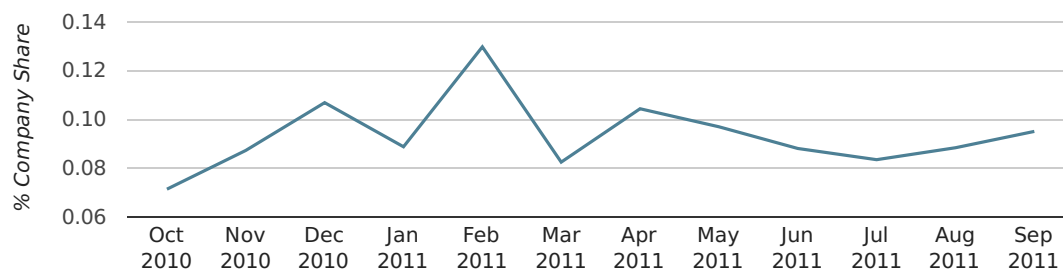
| THIRD QUARTER (JUL 2011 - SEP 2011) | NORTHWOOD |
|-------------------------------------|-------------|
| 2011 | 0.1% |
| 2010 | 0.1% |
| 2009 | 0.1% |
| 2008 | 0.1% |
| 2007 | 0.1% |
| RECORD YEAR (SINCE 1960) | 2000 (0.7%) |

company share by quarter



Monthly Data (Jul, Aug & Sep 2011)

company share by month



| | JULY | AUGUST | SEPTEMBER |
|----------------------------|-------------|-------------|-------------|
| UK FORMATION SHARE IN 2011 | 0.1% | 0.1% | 0.1% |
| UK FORMATION SHARE IN 2010 | 0.1% | 0.1% | 0.1% |
| % CHANGE | -16.6% | 10.1% | -16.4% |
| RECORD YEAR | 2000 (1.5%) | 1995 (0.5%) | 1961 (0.4%) |

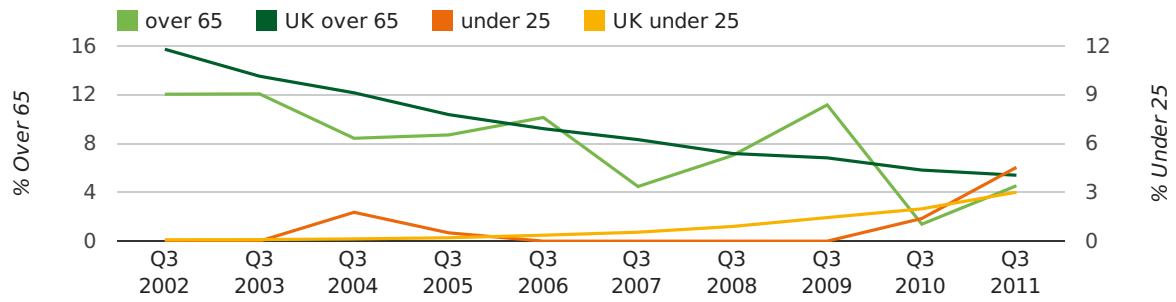
Quarterly Data (Q3 Jul-Sep 2011)

The average age of a director in the third quarter of 2011 was 45.1.

The percentage of directors under the age of 25 was 4.5% compared to the UK figure of 4.0%.

The percentage of directors over the age of 65 was 4.5% compared to the UK figure of 4.1%.

director age by quarter

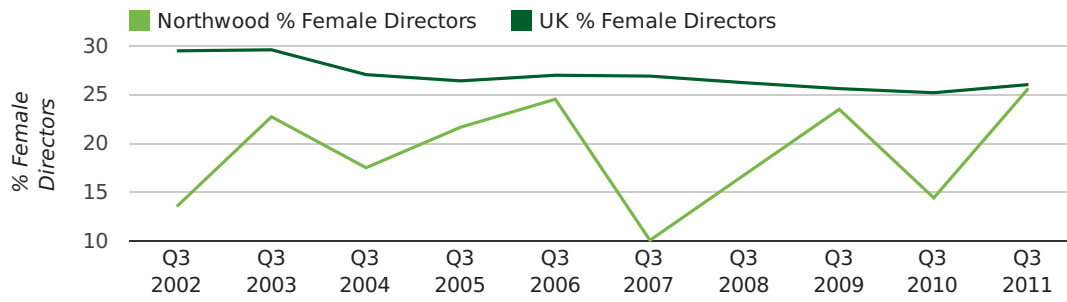


Quarterly Data (Q3 Jul-Sep 2011)

The record third quarter for female directors in Northwood was in 1862 when 50.0% of all directors were female.

25.6% of all director appointments in Northwood in the third quarter of 2011 were female. This compares to a UK average of 26.0% for the same period.

director gender by quarter



Previous 12 months (Sep 2010-Sep 2011)

Excluding: LIMITED, LTD, &, UK, SERVICES, THE, (UK), AND, LTD., A, LLP, SOLUTIONS, COMPANY, OF.

| WORD | PERCENTAGE | UK WORD | UK PERCENTAGE |
|--------------|------------|--------------|---------------|
| MANAGEMENT | 2.36% | CONSULTING | 5.11% |
| CONSULTING | 1.47% | MANAGEMENT | 4.75% |
| CONSULTANTS | 1.47% | CONSULTANCY | 3.19% |
| CONSULTANCY | 1.18% | PROPERTY | 2.41% |
| M | 1.03% | TRADING | 2.06% |
| PROPERTIES | 0.88% | DESIGN | 1.94% |
| LONDON | 0.88% | ASSOCIATES | 1.85% |
| G | 0.74% | BUSINESS | 1.82% |
| DESIGN | 0.74% | CONSULTANTS | 1.76% |
| TRADE | 0.74% | ENGINEERING | 1.74% |
| BUSINESS | 0.74% | MEDIA | 1.72% |
| CARE | 0.74% | CONSTRUCTION | 1.72% |
| R | 0.74% | LONDON | 1.63% |
| MEDIA | 0.59% | J | 1.47% |
| DEVELOPMENTS | 0.59% | GLOBAL | 1.46% |
| NORTHWOOD | 0.59% | INVESTMENTS | 1.43% |
| TRADING | 0.59% | CARE | 1.42% |
| ENGINEERING | 0.59% | IT | 1.38% |
| LOUNGE | 0.44% | BUILDING | 1.30% |
| ELECTRICAL | 0.44% | PROPERTIES | 1.28% |
| N | 0.44% | ELECTRICAL | 1.27% |
| J | 0.44% | M | 1.25% |
| T | 0.44% | ENERGY | 1.22% |
| PROPERTY | 0.44% | TRAINING | 1.21% |
| E | 0.44% | S | 1.21% |

Previous 36 months, excluding companies less than 12 months old

| SIC CODE | NUMBER OF COMPANIES | UK COMPANIES |
|--|---------------------|--------------|
| None Supplied | 139 | 204,493 |
| 7487 - Other business activities | 62 | 65,177 |
| 99999 - Dormant Company | 31 | 18,281 |
| 70229 - Management consultancy activities other than financial management | 27 | 15,760 |
| 9999 - Dormant Company | 18 | 22,587 |
| 7414 - Business & management consultancy | 16 | 14,755 |
| 62020 - Information technology consultancy activities | 13 | 10,137 |
| 7260 - Other computer related activities | 12 | 8,686 |
| 82990 - Other business support service activities not elsewhere classified | 12 | 29,245 |
| 5530 - Restaurants | 10 | 5,640 |
| 7222 - Other software consultancy and supply | 10 | 8,345 |
| 9305 - Other service activities | 9 | 10,525 |
| 4521 - General construction & civil engineering | 9 | 6,321 |
| 7499 - Non-trading company | 8 | 11,543 |
| 74909 - Other professional, scientific and technical activities not elsewhere classified | 7 | 7,551 |
| 98000 - Residents property management | 7 | 2,664 |
| 62090 - Other information technology service activities | 6 | 6,798 |
| 7011 - Development & sell real estate | 6 | 2,638 |
| 41201 - Construction of commercial buildings | 5 | 1,390 |
| 7412 - Accounting, auditing; tax consult | 5 | 2,802 |