

# Nottingham

q1 2011 business confidence report



## headlines

- February 2011 saw a new record in company registrations in Nottingham when compared to any previous February.
- February 2011 saw a new record in company closures in Nottingham when compared to any previous February.
- January 2011 saw a new record in company closures in Nottingham when compared to any previous January.

## contents

new company registrations

closed companies (dissolved)

net company growth

uk company share

director age

director gender

naming trends

sic data

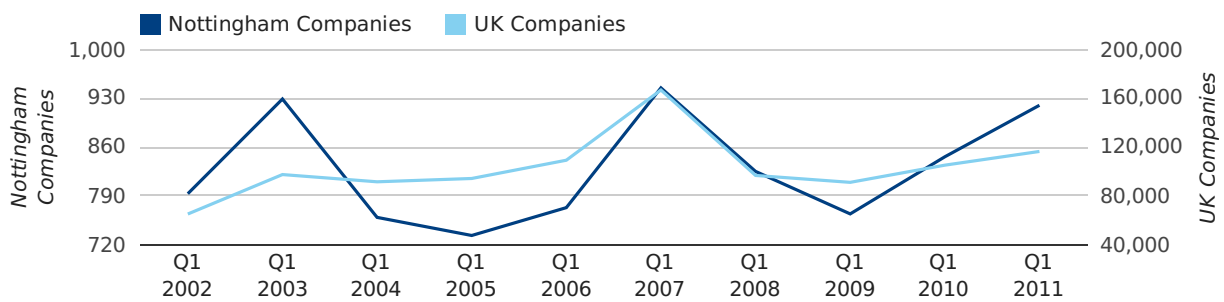
### Quarterly Data (Q1 Jan-Mar 2011)

A total of 920 companies were registered in Nottingham during the first quarter of 2011 (Jan 2011 - Mar 2011).

This figure is an increase of 8.7% versus the same period last year (Q1 2010). This figure compares equally to the UK as a whole, which saw an increase of 10.7% against the same period last year.

FIRST QUARTER (JAN 2011 - MAR 2011)	NOTTINGHAM	UK
2011	920	116,391
2010	846	105,137
% CHANGE	8.7%	10.7%
RECORD YEAR	2007 (945)	2007 (166,814)

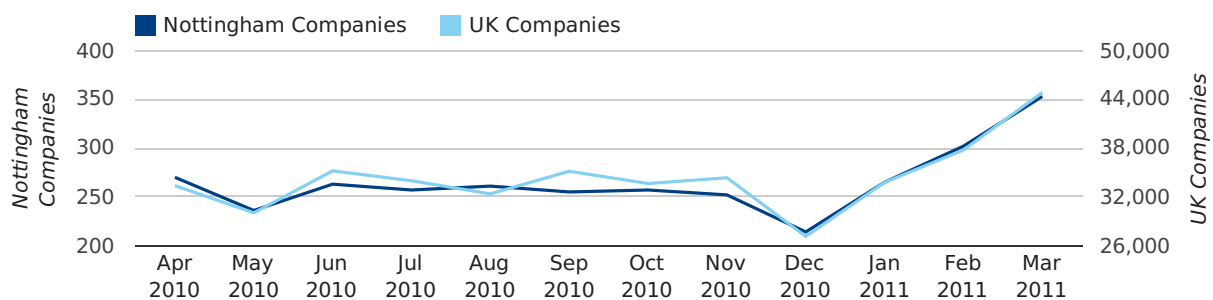
### new companies by quarter



### Monthly Data (Jan, Feb & Mar 2011)

February 2011 saw a new record in company registrations in Nottingham when compared to any previous February.

### new companies by month



	JANUARY	FEBRUARY	MARCH
NEW COMPANIES IN 2011	265	302	353
NEW COMPANIES IN 2010	232	261	353
% CHANGE	14.2%	15.7%	0.0%
RECORD YEAR	2003 (305)	2011 (302)	2002 (460)

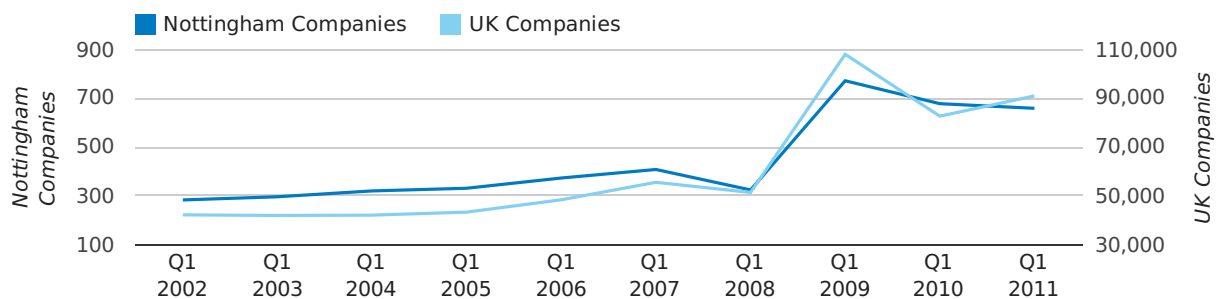
### Quarterly Data (Q1 Jan-Mar 2011)

A total of 659 companies were dissolved in Nottingham during the first quarter of 2011 (Jan 2011 - Mar 2011).

This figure is a decrease of 2.8% versus the same period last year (Q1 2010). This figure compares well to the UK as a whole, which saw an increase of 10.0% against the same period last year.

FIRST QUARTER (JAN 2011 - MAR 2011)	NOTTINGHAM	UK
2011	659	90,986
2010	678	82,677
% CHANGE	-2.8%	10.0%
RECORD YEAR	2009 (772)	2009 (108,060)

### dissolved companies by quarter

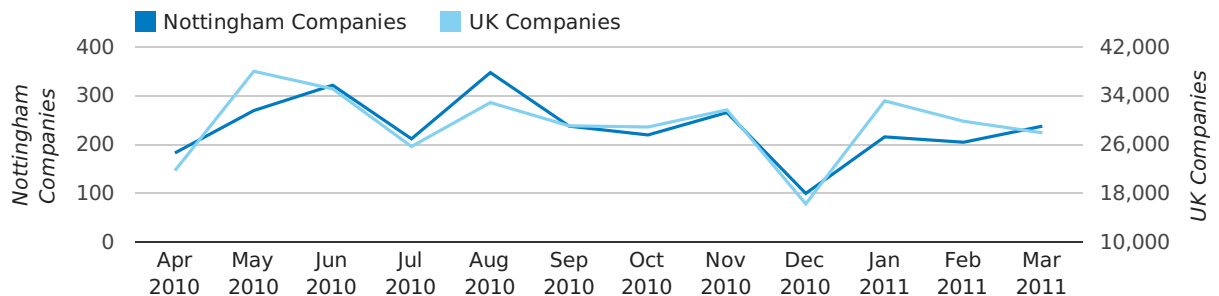


### Monthly Data (Jan, Feb & Mar 2011)

February 2011 saw a new record in company closures in Nottingham when compared to any previous February.

January 2011 saw a new record in company closures in Nottingham when compared to any previous January.

### dissolved companies by month



	JANUARY	FEBRUARY	MARCH
CLOSED COMPANIES IN 2011	216	205	238
CLOSED COMPANIES IN 2010	215	204	259
% CHANGE	0.5%	0.5%	-8%
RECORD YEAR	2011 (216)	2011 (205)	2009 (433)

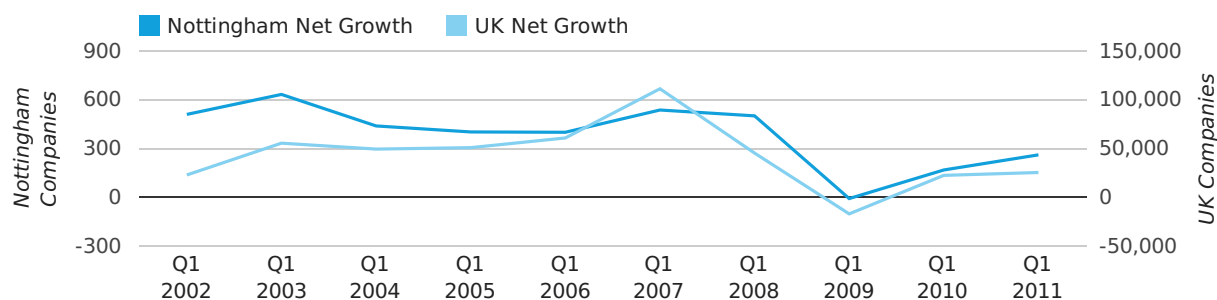
### Quarterly Data (Q1 Jan-Mar 2011)

Net company growth for Nottingham during the first quarter of 2011 (Jan 2011 - Mar 2011) was 261 companies.

This represents an increase of 55.4% on the same period last year.

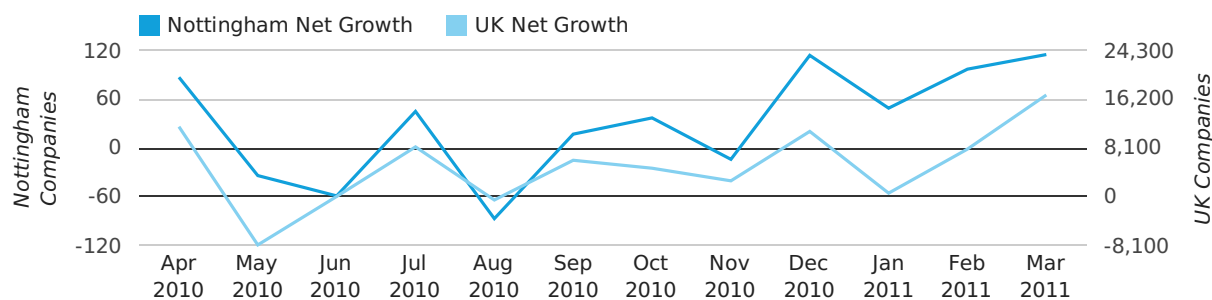
FIRST QUARTER (JAN 2011 - MAR 2011)	NOTTINGHAM	UK
2011	261	25,405
2010	168	22,460
% CHANGE	55.4%	13.1%
RECORD YEAR	2003 (633)	2007 (111,282)

### net growth by quarter



### Monthly Data (Jan, Feb & Mar 2011)

### net growth by month



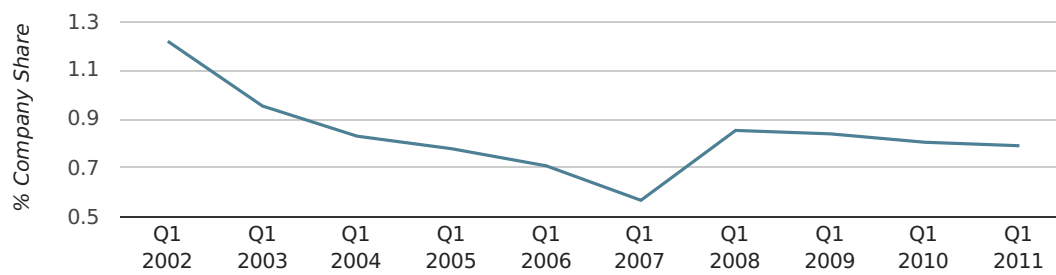
	JANUARY	FEBRUARY	MARCH
NET GROWTH IN 2011	49	97	115
NET GROWTH IN 2010	17	57	94
% CHANGE	188.2%	70.2%	22.3%
RECORD YEAR	2003 (185)	2003 (178)	2002 (370)

### Quarterly Data (Q1 Jan-Mar 2011)

In the first quarter of 2011, Nottingham formed 0.8% of all UK companies.

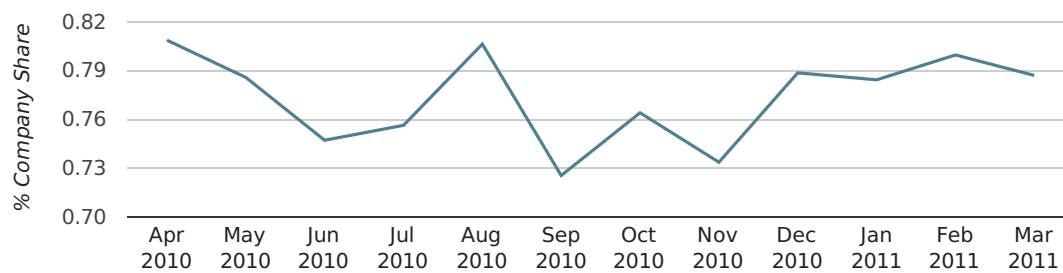
FIRST QUARTER (JAN 2011 - MAR 2011)	NOTTINGHAM
2011	0.8%
2010	0.8%
2009	0.8%
2008	0.9%
2007	0.6%
RECORD YEAR (SINCE 1960)	1974 (1.6%)

### company share by quarter



### Monthly Data (Jan, Feb & Mar 2011)

### company share by month



	JANUARY	FEBRUARY	MARCH
UK FORMATION SHARE IN 2011	0.8%	0.8%	0.8%
UK FORMATION SHARE IN 2010	0.8%	0.8%	0.8%
% CHANGE	-1.5%	1.8%	-4.6%
RECORD YEAR	1968 (2.6%)	1975 (1.7%)	2002 (1.9%)

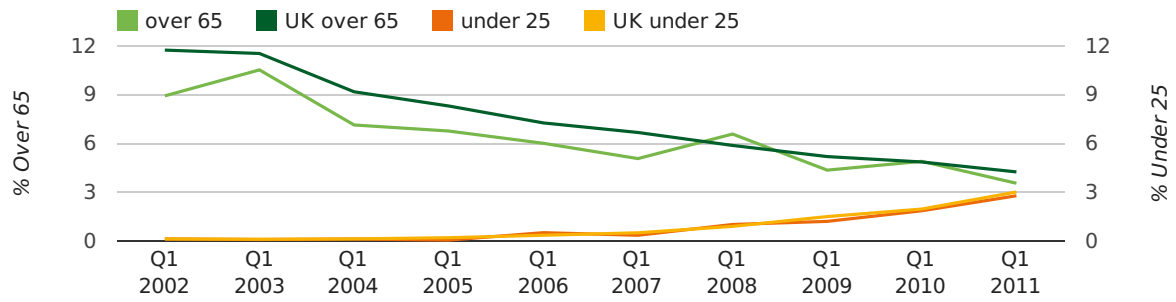
### Quarterly Data (Q1 Jan-Mar 2011)

The average age of a director in the first quarter of 2011 was 43.5.

The percentage of directors under the age of 25 was 2.8% compared to the UK figure of 3.0%.

The percentage of directors over the age of 65 was 3.6% compared to the UK figure of 4.3%.

#### director age by quarter

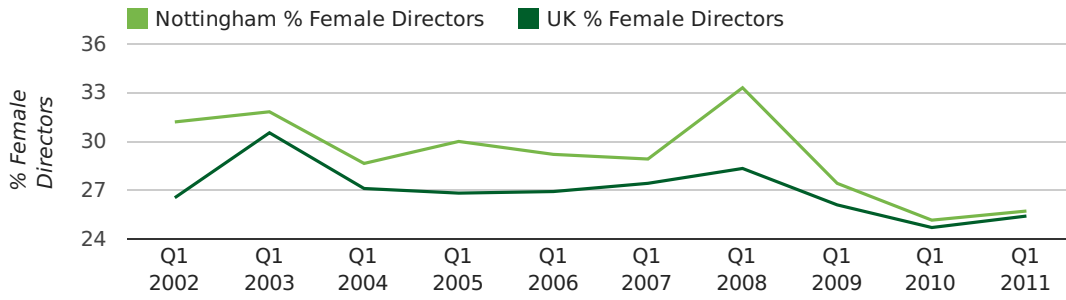


### Quarterly Data (Q1 Jan-Mar 2011)

The record first quarter for female directors in Nottingham was in 1861 when 40.0% of all directors were female.

25.7% of all director appointments in Nottingham in the first quarter of 2011 were female. This compares to a UK average of 25.4% for the same period.

#### director gender by quarter





## Previous 12 months (Mar 2010-Mar 2011)

Excluding: LIMITED, LTD, &amp;, UK, SERVICES, THE, (UK), AND, LTD., A, LLP, SOLUTIONS, COMPANY, OF.

WORD	PERCENTAGE	UK WORD	UK PERCENTAGE
MANAGEMENT	1.87%	CONSULTING	5.04%
NOTTINGHAM	1.55%	MANAGEMENT	4.97%
CONSULTING	1.24%	CONSULTANCY	3.16%
PROPERTY	1.14%	PROPERTY	2.38%
(NOTTINGHAM)	1.09%	TRADING	2.10%
CONSULTANCY	0.90%	DESIGN	1.93%
BUSINESS	0.85%	ASSOCIATES	1.92%
SECURITY	0.80%	BUSINESS	1.87%
ASSOCIATES	0.80%	CONSTRUCTION	1.80%
DESIGN	0.80%	CONSULTANTS	1.76%
CARE	0.80%	MEDIA	1.69%
J	0.75%	ENGINEERING	1.61%
ENGINEERING	0.75%	LONDON	1.60%
TRADING	0.75%	CARE	1.45%
ELECTRICAL	0.70%	J	1.45%
SYSTEMS	0.68%	GLOBAL	1.44%
TRAINING	0.66%	INVESTMENTS	1.43%
IT	0.63%	IT	1.41%
BUILDING	0.63%	PROPERTIES	1.36%
PROPERTIES	0.63%	BUILDING	1.34%
S	0.63%	M	1.30%
MEDIA	0.61%	ELECTRICAL	1.28%
R	0.51%	S	1.24%
MIDLANDS	0.51%	INTERNATIONAL	1.23%
HOUSE	0.51%	SYSTEMS	1.23%

## Previous 36 months, excluding companies less than 12 months old

SIC CODE	NUMBER OF COMPANIES	UK COMPANIES
None Supplied	1,313	202,798
7487 - Other business activities	397	60,968
82990 - Other business support service activities not elsewhere classified	188	30,253
9999 - Dormant Company	150	19,765
99999 - Dormant Company	131	18,336
70229 - Management consultancy activities other than financial management	121	16,150
7414 - Business & management consultancy	112	12,916
62020 - Information technology consultancy activities	95	10,246
96090 - Other service activities not elsewhere classified	73	10,085
7499 - Non-trading company	72	11,316
7260 - Other computer related activities	71	7,789
74909 - Other professional, scientific and technical activities not elsewhere classified	65	7,788
62090 - Other information technology service activities	59	6,996
9305 - Other service activities	57	8,740
7222 - Other software consultancy and supply	55	7,000
74990 - Non-trading company	54	8,695
43210 - Electrical installation	51	3,172
4521 - General construction & civil engineering	46	6,183
7415 - Holding companies including head offices	43	1,769
86900 - Other human health activities	42	4,092