

Oldham

q1 2011 business confidence report



headlines

- Q1 2011 saw a new record in company closures in Oldham when compared to any previous Q1.
- February 2011 saw a new record in company closures in Oldham when compared to any previous February.
- January 2011 saw a new record in company closures in Oldham when compared to any previous January.

contents

new company registrations

closed companies (dissolved)

net company growth

uk company share

director age

director gender

naming trends

sic data

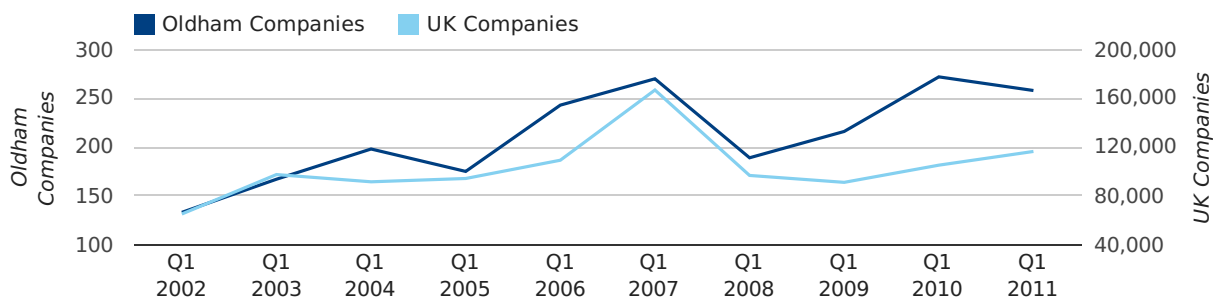
Quarterly Data (Q1 Jan-Mar 2011)

A total of 258 companies were registered in Oldham during the first quarter of 2011 (Jan 2011 - Mar 2011).

This figure is a decrease of 5.1% versus the same period last year (Q1 2010). This figure compares badly to the UK as a whole, which saw an increase of 10.7% against the same period last year.

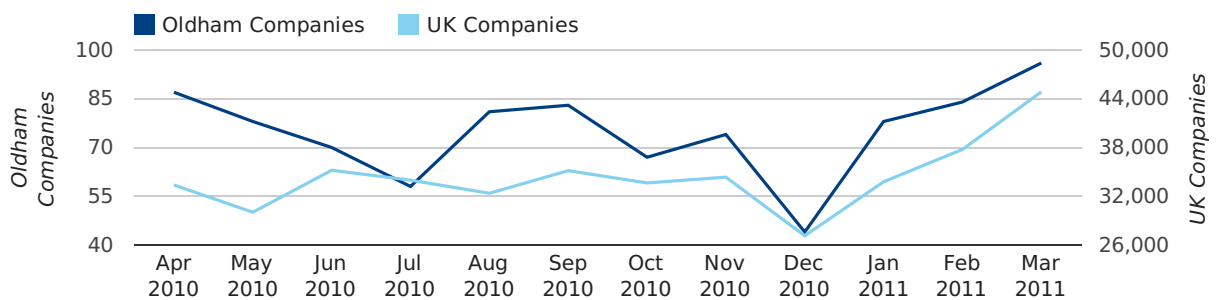
FIRST QUARTER (JAN 2011 - MAR 2011)	OLDHAM	UK
2011	258	116,391
2010	272	105,137
% CHANGE	-5.1%	10.7%
RECORD YEAR	2010 (272)	2007 (166,814)

new companies by quarter



Monthly Data (Jan, Feb & Mar 2011)

new companies by month



	JANUARY	FEBRUARY	MARCH
NEW COMPANIES IN 2011	78	84	96
NEW COMPANIES IN 2010	78	94	100
% CHANGE	0.0%	-10.6%	-4.0%
RECORD YEAR	2010 (78)	2010 (94)	2007 (109)

Quarterly Data (Q1 Jan-Mar 2011)

Q1 2011 saw a new record in company closures in Oldham when compared to any previous Q1.

A total of 184 companies were dissolved in Oldham during the first quarter of 2011 (Jan 2011 - Mar 2011).

This figure is an increase of 9.5% versus the same period last year (Q1 2010). This figure compares well to the UK as a whole, which saw an increase of 10.0% against the same period last year.

FIRST QUARTER (JAN 2011 - MAR 2011)	OLDHAM	UK
2011	184	90,986
2010	168	82,677
% CHANGE	9.5%	10.0%
RECORD YEAR	2011 (184)	2009 (108,060)

dissolved companies by quarter

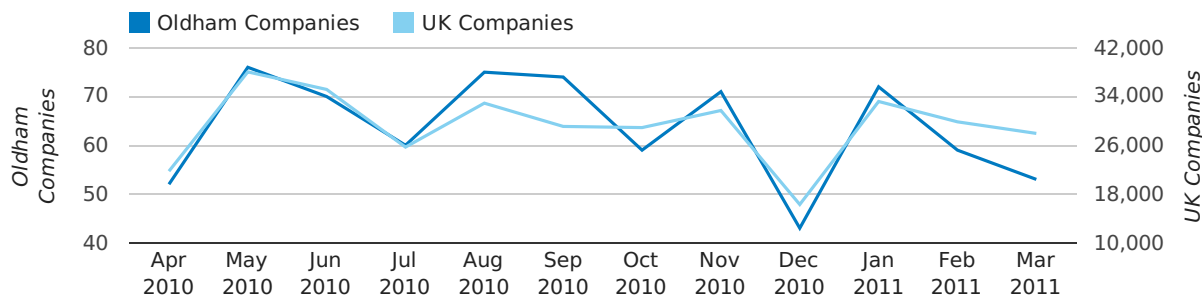


Monthly Data (Jan, Feb & Mar 2011)

February 2011 saw a new record in company closures in Oldham when compared to any previous February.

January 2011 saw a new record in company closures in Oldham when compared to any previous January.

dissolved companies by month



	JANUARY	FEBRUARY	MARCH
CLOSED COMPANIES IN 2011	72	59	53
CLOSED COMPANIES IN 2010	36	51	81
% CHANGE	100.0%	15.7%	-35%
RECORD YEAR	2011 (72)	2011 (59)	2009 (105)

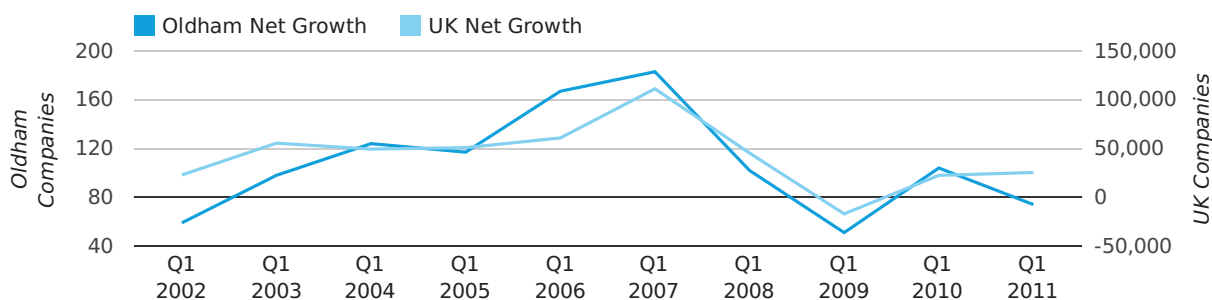
Quarterly Data (Q1 Jan-Mar 2011)

Net company growth for Oldham during the first quarter of 2011 (Jan 2011 - Mar 2011) was 74 companies.

This represents a decrease of 28.8% on the same period last year.

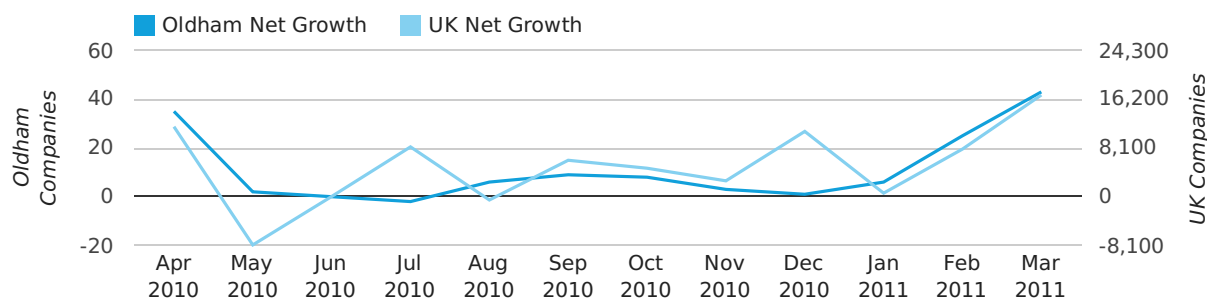
FIRST QUARTER (JAN 2011 - MAR 2011)	OLDHAM	UK
2011	74	25,405
2010	104	22,460
% CHANGE	-28.8%	13.1%
RECORD YEAR	2007 (183)	2007 (111,282)

net growth by quarter



Monthly Data (Jan, Feb & Mar 2011)

net growth by month



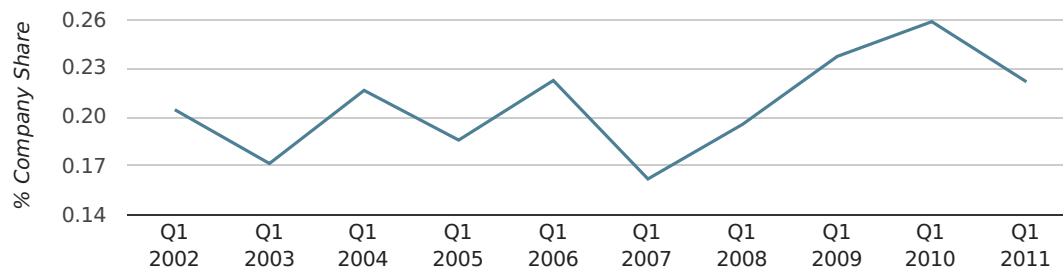
	JANUARY	FEBRUARY	MARCH
NET GROWTH IN 2011	6	25	43
NET GROWTH IN 2010	42	43	19
% CHANGE	-85.7%	-41.9%	126.3%
RECORD YEAR	2009 (53)	2007 (57)	2007 (84)

Quarterly Data (Q1 Jan-Mar 2011)

In the first quarter of 2011, Oldham formed 0.2% of all UK companies.

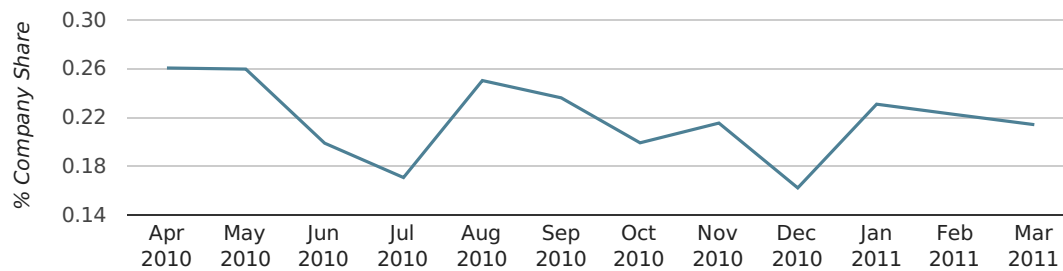
FIRST QUARTER (JAN 2011 - MAR 2011)	OLDHAM
2011	0.2%
2010	0.3%
2009	0.2%
2008	0.2%
2007	0.2%
RECORD YEAR (SINCE 1960)	1977 (0.4%)

company share by quarter



Monthly Data (Jan, Feb & Mar 2011)

company share by month



	JANUARY	FEBRUARY	MARCH
UK FORMATION SHARE IN 2011	0.2%	0.2%	0.2%
UK FORMATION SHARE IN 2010	0.3%	0.3%	0.2%
% CHANGE	-13.7%	-21.4%	-8.4%
RECORD YEAR	1963 (0.5%)	1962 (0.6%)	1968 (0.7%)

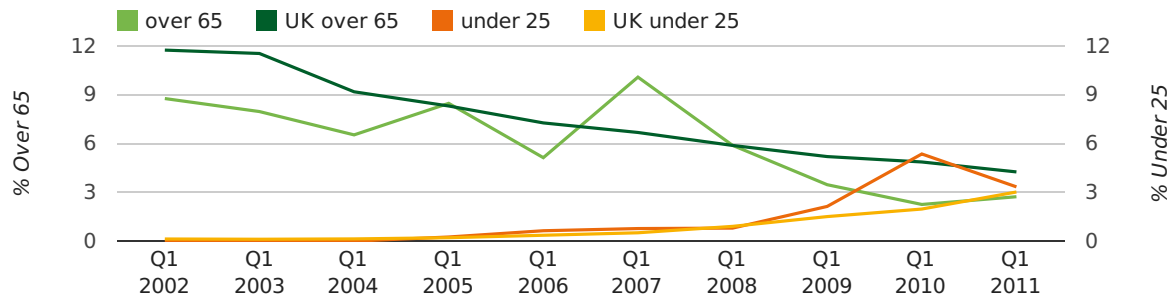
Quarterly Data (Q1 Jan-Mar 2011)

The average age of a director in the first quarter of 2011 was 40.9.

The percentage of directors under the age of 25 was 3.3% compared to the UK figure of 3.0%.

The percentage of directors over the age of 65 was 2.7% compared to the UK figure of 4.3%.

director age by quarter

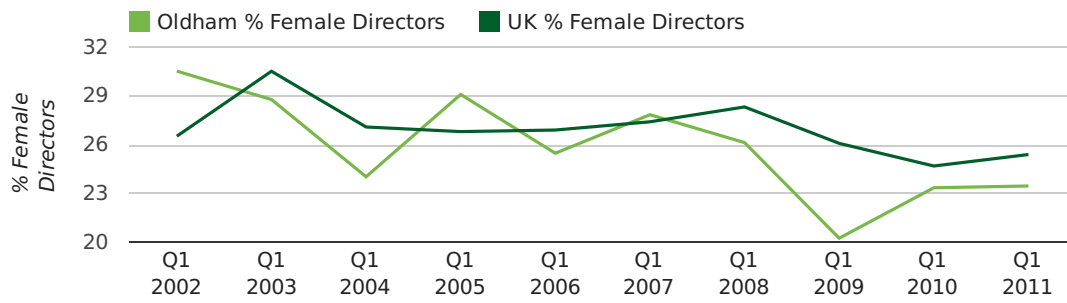


Quarterly Data (Q1 Jan-Mar 2011)

The record first quarter for female directors in Oldham was in 1861 when 40.0% of all directors were female.

23.5% of all director appointments in Oldham in the first quarter of 2011 were female. This compares to a UK average of 25.4% for the same period.

director gender by quarter



Previous 12 months (Mar 2010-Mar 2011)

Excluding: LIMITED, LTD, &, UK, SERVICES, THE, (UK), AND, LTD., A, LLP, SOLUTIONS, COMPANY, OF.

WORD	PERCENTAGE	UK WORD	UK PERCENTAGE
CARE	1.18%	CONSULTING	5.04%
OLDHAM	1.04%	MANAGEMENT	4.97%
CONSULTANCY	1.04%	CONSULTANCY	3.16%
ELECTRICAL	0.97%	PROPERTY	2.38%
MANAGEMENT	0.97%	TRADING	2.10%
SECURITY	0.90%	DESIGN	1.93%
CONSTRUCTION	0.83%	ASSOCIATES	1.92%
TRADING	0.76%	BUSINESS	1.87%
ENGINEERING	0.76%	CONSTRUCTION	1.80%
DESIGN	0.76%	CONSULTANTS	1.76%
J	0.76%	MEDIA	1.69%
COMMUNITY	0.69%	ENGINEERING	1.61%
MEDIA	0.62%	LONDON	1.60%
DENTAL	0.62%	CARE	1.45%
(OLDHAM)	0.55%	J	1.45%
S	0.55%	GLOBAL	1.44%
R	0.55%	INVESTMENTS	1.43%
CONSULTANTS	0.55%	IT	1.41%
PROPERTY	0.49%	PROPERTIES	1.36%
L	0.49%	BUILDING	1.34%
ASSOCIATES	0.49%	M	1.30%
DIGITAL	0.49%	ELECTRICAL	1.28%
D	0.49%	S	1.24%
(NORTH	0.42%	INTERNATIONAL	1.23%
PRACTICE	0.42%	SYSTEMS	1.23%

Previous 36 months, excluding companies less than 12 months old

SIC CODE	NUMBER OF COMPANIES	UK COMPANIES
None Supplied	453	202,798
7487 - Other business activities	110	60,968
86230 - Dental practice activities	45	1,418
82990 - Other business support service activities not elsewhere classified	45	30,253
9999 - Dormant Company	42	19,765
99999 - Dormant Company	36	18,336
96090 - Other service activities not elsewhere classified	32	10,085
9305 - Other service activities	31	8,740
70229 - Management consultancy activities other than financial management	22	16,150
4521 - General construction & civil engineering	19	6,183
43999 - Other specialised construction activities not elsewhere classified	16	3,097
7011 - Development & sell real estate	15	2,654
74909 - Other professional, scientific and technical activities not elsewhere classified	15	7,788
68209 - Other letting and operating of own or leased real estate	14	3,895
7414 - Business & management consultancy	14	12,916
74990 - Non-trading company	14	8,695
4545 - Other building completion	13	2,483
7499 - Non-trading company	13	11,316
4542 - Joinery installation	12	899
62090 - Other information technology service activities	12	6,996