

Pinner

q1 2011 business confidence report



contents

new company registrations

closed companies (dissolved)

net company growth

uk company share

director age

director gender

naming trends

sic data

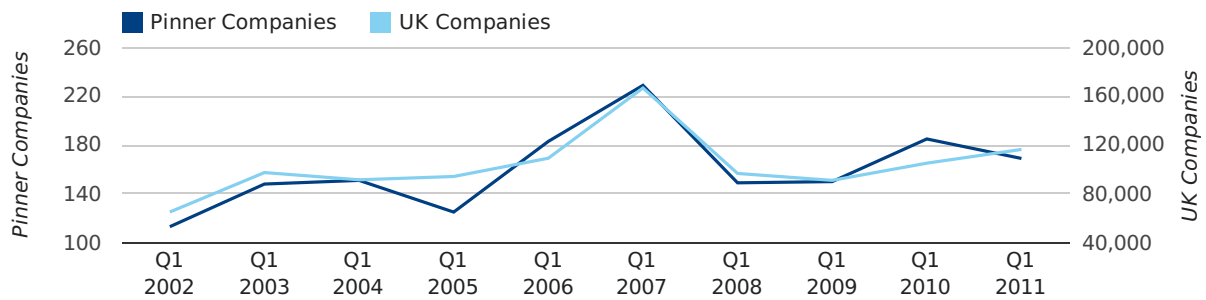
Quarterly Data (Q1 Jan-Mar 2011)

A total of 169 companies were registered in Pinner during the first quarter of 2011 (Jan 2011 - Mar 2011).

This figure is a decrease of 8.6% versus the same period last year (Q1 2010). This figure compares badly to the UK as a whole, which saw an increase of 10.7% against the same period last year.

FIRST QUARTER (JAN 2011 - MAR 2011)	PINNER	UK
2011	169	116,391
2010	185	105,137
% CHANGE	-8.6%	10.7%
RECORD YEAR	2007 (229)	2007 (166,814)

new companies by quarter



Monthly Data (Jan, Feb & Mar 2011)

new companies by month



	JANUARY	FEBRUARY	MARCH
NEW COMPANIES IN 2011	45	53	71
NEW COMPANIES IN 2010	45	49	91
% CHANGE	0.0%	8.2%	-22.0%
RECORD YEAR	2008 (58)	2007 (67)	2007 (106)

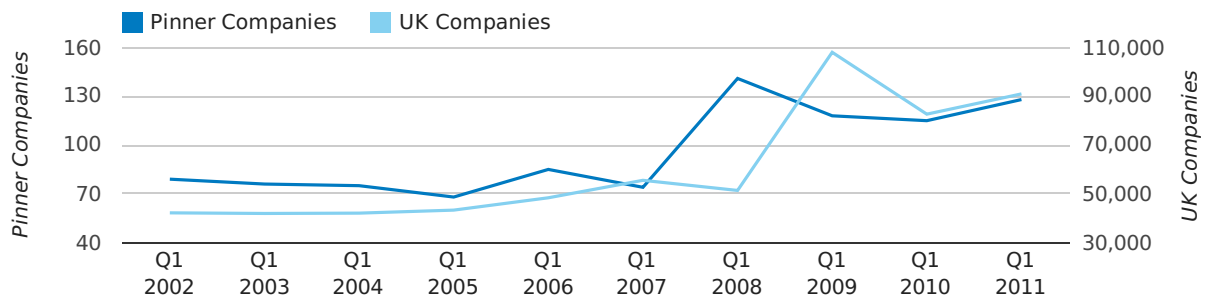
Quarterly Data (Q1 Jan-Mar 2011)

A total of 128 companies were dissolved in Pinner during the first quarter of 2011 (Jan 2011 - Mar 2011).

This figure is an increase of 11.3% versus the same period last year (Q1 2010). This figure compares poorly to the UK as a whole, which saw an increase of 10.0% against the same period last year.

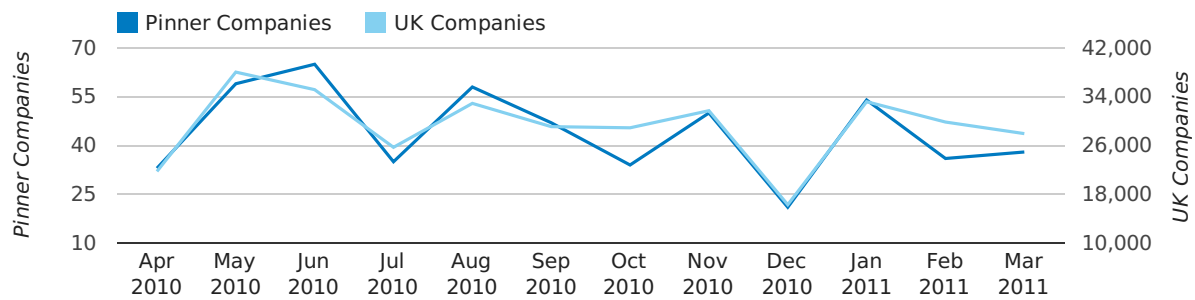
FIRST QUARTER (JAN 2011 - MAR 2011)	PINNER	UK
2011	128	90,986
2010	115	82,677
% CHANGE	11.3%	10.0%
RECORD YEAR	2008 (141)	2009 (108,060)

dissolved companies by quarter



Monthly Data (Jan, Feb & Mar 2011)

dissolved companies by month



	JANUARY	FEBRUARY	MARCH
CLOSED COMPANIES IN 2011	54	36	38
CLOSED COMPANIES IN 2010	41	29	45
% CHANGE	31.7%	24.1%	-16%
RECORD YEAR	2008 (65)	2008 (68)	2009 (75)

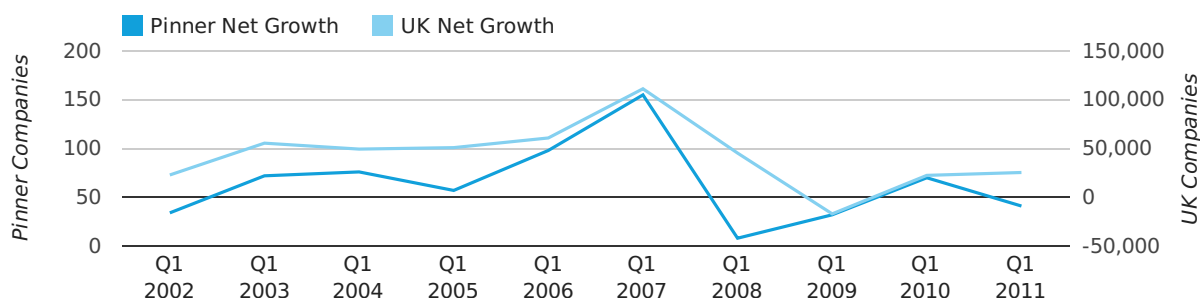
Quarterly Data (Q1 Jan-Mar 2011)

Net company growth for Pinner during the first quarter of 2011 (Jan 2011 - Mar 2011) was 41 companies.

This represents a decrease of 41.4% on the same period last year.

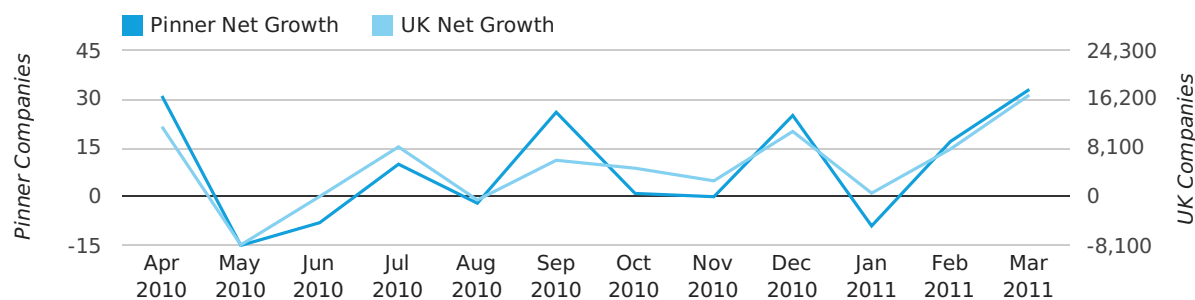
FIRST QUARTER (JAN 2011 - MAR 2011)	PINNER	UK
2011	41	25,405
2010	70	22,460
% CHANGE	-41.4%	13.1%
RECORD YEAR	2007 (155)	2007 (111,282)

net growth by quarter



Monthly Data (Jan, Feb & Mar 2011)

net growth by month



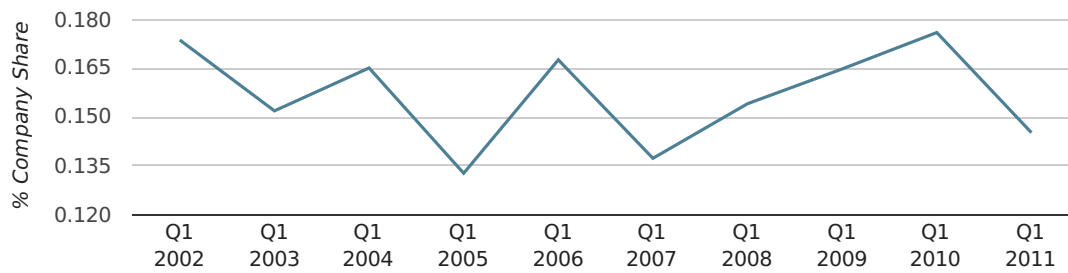
	JANUARY	FEBRUARY	MARCH
NET GROWTH IN 2011	-9	17	33
NET GROWTH IN 2010	4	20	46
% CHANGE	-325.0%	-15.0%	-28.3%
RECORD YEAR	2007 (32)	2007 (39)	2007 (84)

Quarterly Data (Q1 Jan-Mar 2011)

In the first quarter of 2011, Pinner formed 0.1% of all UK companies.

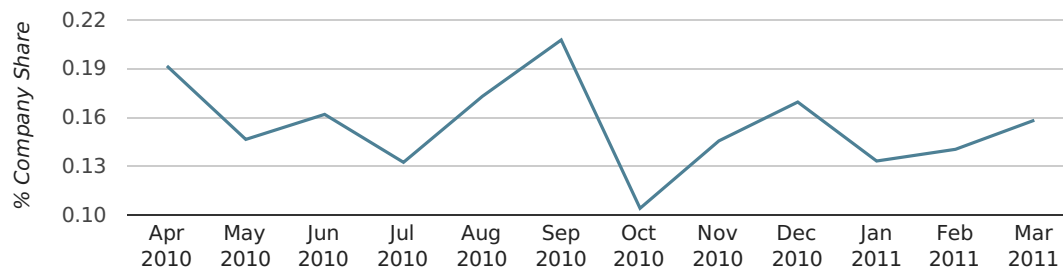
FIRST QUARTER (JAN 2011 - MAR 2011)	PINNER
2011	0.1%
2010	0.2%
2009	0.2%
2008	0.2%
2007	0.1%
RECORD YEAR (SINCE 1960)	1971 (0.4%)

company share by quarter



Monthly Data (Jan, Feb & Mar 2011)

company share by month



	JANUARY	FEBRUARY	MARCH
UK FORMATION SHARE IN 2011	0.1%	0.1%	0.2%
UK FORMATION SHARE IN 2010	0.2%	0.1%	0.2%
% CHANGE	-13.7%	-4.8%	-25.6%
RECORD YEAR	1969 (0.6%)	1971 (0.9%)	1961 (0.6%)

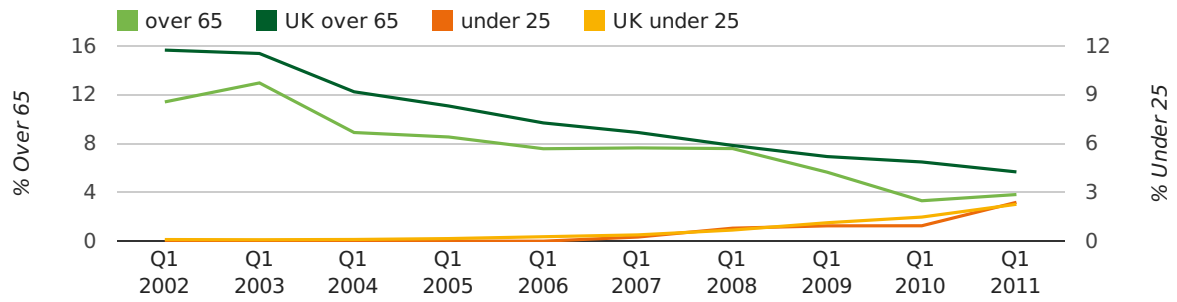
Quarterly Data (Q1 Jan-Mar 2011)

The average age of a director in the first quarter of 2011 was 45.4.

The percentage of directors under the age of 25 was 2.4% compared to the UK figure of 3.0%.

The percentage of directors over the age of 65 was 3.8% compared to the UK figure of 4.3%.

director age by quarter

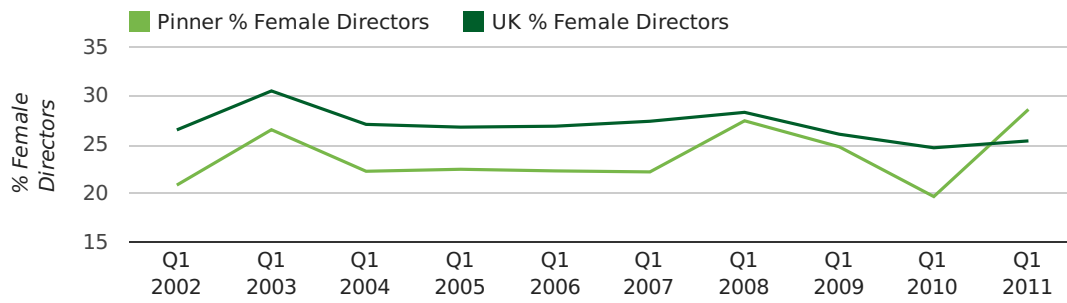


Quarterly Data (Q1 Jan-Mar 2011)

The record first quarter for female directors in Pinner was in 1861 when 40.0% of all directors were female.

28.6% of all director appointments in Pinner in the first quarter of 2011 were female. This compares to a UK average of 25.4% for the same period.

director gender by quarter



Previous 12 months (Mar 2010-Mar 2011)

Excluding: LIMITED, LTD, &, UK, SERVICES, THE, (UK), AND, LTD., A, LLP, SOLUTIONS, COMPANY, OF.

WORD	PERCENTAGE	UK WORD	UK PERCENTAGE
CONSULTING	2.71%	CONSULTING	5.04%
CONSULTANCY	2.24%	MANAGEMENT	4.97%
MANAGEMENT	2.15%	CONSULTANCY	3.16%
ASSOCIATES	0.84%	PROPERTY	2.38%
BUSINESS	0.75%	TRADING	2.10%
LONDON	0.75%	DESIGN	1.93%
CONSULTANTS	0.65%	ASSOCIATES	1.92%
SYSTEMS	0.65%	BUSINESS	1.87%
INTERNATIONAL	0.56%	CONSTRUCTION	1.80%
PRODUCTIONS	0.56%	CONSULTANTS	1.76%
CARE	0.56%	MEDIA	1.69%
IT	0.56%	ENGINEERING	1.61%
TRADING	0.56%	LONDON	1.60%
FINANCE	0.47%	CARE	1.45%
MEDIA	0.47%	J	1.45%
GLOBAL	0.47%	GLOBAL	1.44%
PROPERTY	0.47%	INVESTMENTS	1.43%
SOLAR	0.47%	IT	1.41%
SECURITY	0.37%	PROPERTIES	1.36%
MARKETING	0.37%	BUILDING	1.34%
DENTAL	0.37%	M	1.30%
MY	0.37%	ELECTRICAL	1.28%
WORLD	0.37%	S	1.24%
PINNER	0.37%	INTERNATIONAL	1.23%
EUROPE	0.37%	SYSTEMS	1.23%

Previous 36 months, excluding companies less than 12 months old

SIC CODE	NUMBER OF COMPANIES	UK COMPANIES
None Supplied	252	202,798
7487 - Other business activities	97	60,968
7222 - Other software consultancy and supply	64	7,000
62020 - Information technology consultancy activities	47	10,246
70229 - Management consultancy activities other than financial management	42	16,150
82990 - Other business support service activities not elsewhere classified	37	30,253
7414 - Business & management consultancy	33	12,916
9999 - Dormant Company	29	19,765
96090 - Other service activities not elsewhere classified	24	10,085
7499 - Non-trading company	22	11,316
99999 - Dormant Company	21	18,336
62090 - Other information technology service activities	20	6,996
7260 - Other computer related activities	19	7,789
74909 - Other professional, scientific and technical activities not elsewhere classified	18	7,788
9305 - Other service activities	14	8,740
43390 - Other building completion and finishing	13	2,707
5530 - Restaurants	13	4,898
68320 - Management of real estate on a fee or contract basis	13	3,220
4521 - General construction & civil engineering	9	6,183
9800 - Residents Property Management	8	1,503