

Plymouth

q3 2011 business confidence report



headlines

- Q3 2011 saw a new record in company registrations in Plymouth when compared to any previous Q3.
- September 2011 saw a new record in company registrations in Plymouth when compared to any previous September.
- August 2011 saw a new record in company registrations in Plymouth when compared to any previous August.
- July 2011 saw a new record in company registrations in Plymouth when compared to any previous July.
- Q3 2011 saw a new record in net growth in Plymouth when compared to any previous Q3.

contents

new company registrations

closed companies (dissolved)

net company growth

uk company share

director age

director gender

naming trends

sic data

Quarterly Data (Q3 Jul-Sep 2011)

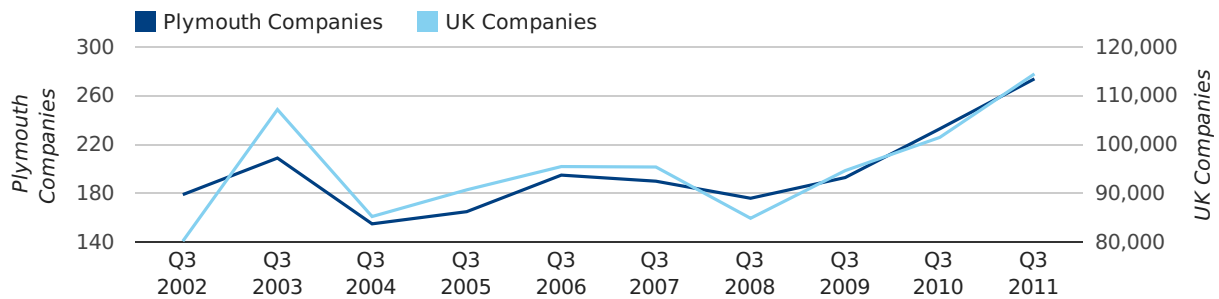
Q3 2011 saw a new record in company registrations in Plymouth when compared to any previous Q3.

A total of 274 companies were registered in Plymouth during the third quarter of 2011 (Jul 2011 - Sep 2011).

This figure is an increase of 17.6% versus the same period last year (Q3 2010). This figure compares well to the UK as a whole, which saw an increase of 12.8% against the same period last year.

THIRD QUARTER (JUL 2011 - SEP 2011)	PLYMOUTH	UK
2011	274	114,512
2010	233	101,492
% CHANGE	17.6%	12.8%
RECORD YEAR	2011 (274)	2011 (114,512)

new companies by quarter



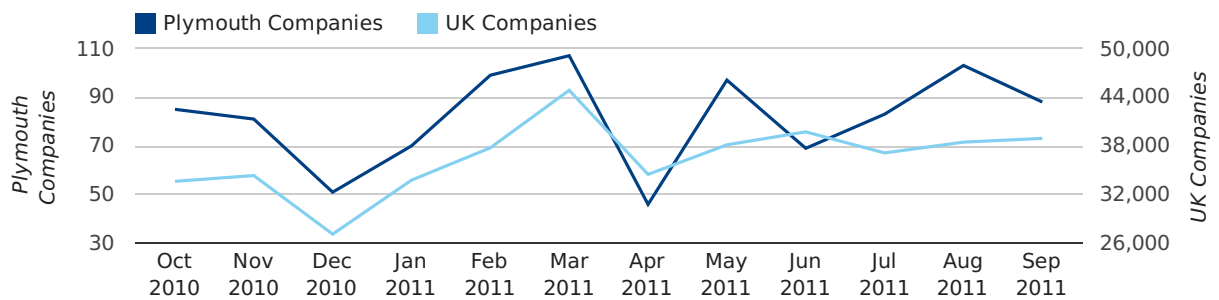
Monthly Data (Jul, Aug & Sep 2011)

September 2011 saw a new record in company registrations in Plymouth when compared to any previous September.

August 2011 saw a new record in company registrations in Plymouth when compared to any previous August.

July 2011 saw a new record in company registrations in Plymouth when compared to any previous July.

new companies by month



	JULY	AUGUST	SEPTEMBER
NEW COMPANIES IN 2011	83	103	88
NEW COMPANIES IN 2010	75	75	83
% CHANGE	10.7%	37.3%	6.0%
RECORD YEAR	2011 (83)	2011 (103)	2011 (88)

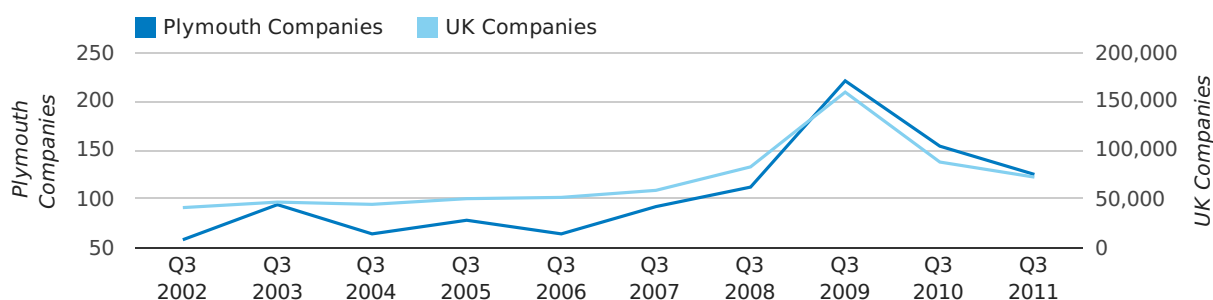
Quarterly Data (Q3 Jul-Sep 2011)

A total of 125 companies were dissolved in Plymouth during the third quarter of 2011 (Jul 2011 - Sep 2011).

This figure is a decrease of 18.8% versus the same period last year (Q3 2010). This figure compares well to the UK as a whole, which saw a decrease of 17.6% against the same period last year.

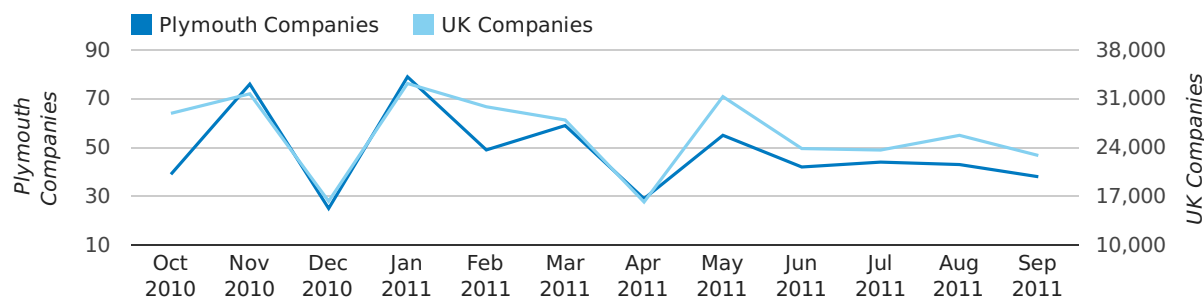
THIRD QUARTER (JUL 2011 - SEP 2011)	PLYMOUTH	UK
2011	125	72,230
2010	154	87,705
% CHANGE	-18.8%	-17.6%
RECORD YEAR	2009 (221)	2009 (159,401)

dissolved companies by quarter



Monthly Data (Jul, Aug & Sep 2011)

dissolved companies by month



	JULY	AUGUST	SEPTEMBER
CLOSED COMPANIES IN 2011	44	43	38
CLOSED COMPANIES IN 2010	48	61	45
% CHANGE	-8.3%	-29.5%	-16%
RECORD YEAR	2009 (64)	2008 (87)	2009 (86)

Quarterly Data (Q3 Jul-Sep 2011)

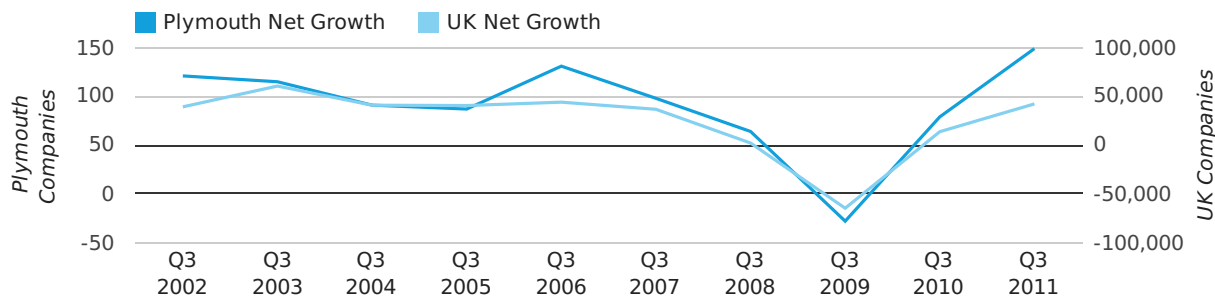
Q3 2011 saw a new record in net growth in Plymouth when compared to any previous Q3.

Net company growth for Plymouth during the third quarter of 2011 (Jul 2011 - Sep 2011) was 149 companies.

This represents an increase of 88.6% on the same period last year.

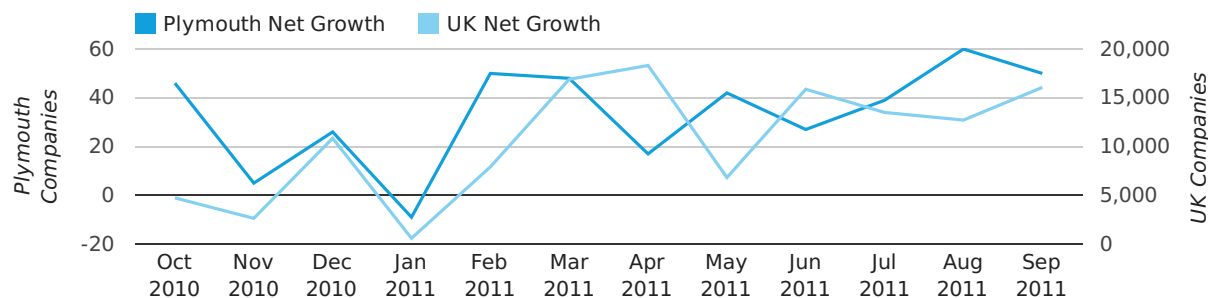
THIRD QUARTER (JUL 2011 - SEP 2011)	PLYMOUTH	UK
2011	149	42,282
2010	79	13,787
% CHANGE	88.6%	206.7%
RECORD YEAR	2011 (149)	2003 (60,597)

net growth by quarter



Monthly Data (Jul, Aug & Sep 2011)

net growth by month



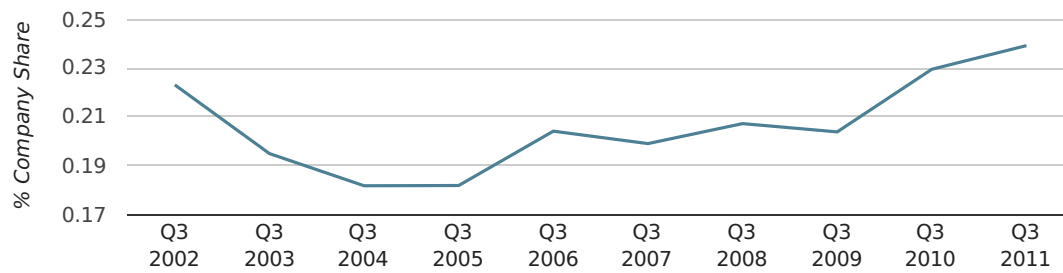
	JULY	AUGUST	SEPTEMBER
NET GROWTH IN 2011	39	60	50
NET GROWTH IN 2010	27	14	38
% CHANGE	44.4%	328.6%	31.6%
RECORD YEAR	2008 (61)	2003 (61)	2002 (52)

Quarterly Data (Q3 Jul-Sep 2011)

In the third quarter of 2011, Plymouth formed 0.2% of all UK companies.

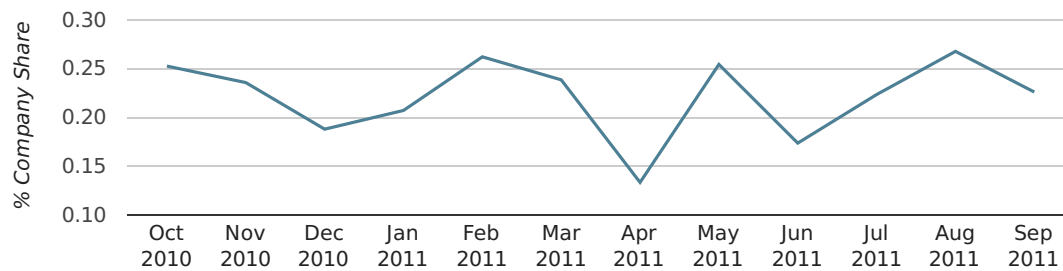
THIRD QUARTER (JUL 2011 - SEP 2011)	PLYMOUTH
2011	0.2%
2010	0.2%
2009	0.2%
2008	0.2%
2007	0.2%
RECORD YEAR (SINCE 1960)	1960 (0.4%)

company share by quarter



Monthly Data (Jul, Aug & Sep 2011)

company share by month



	JULY	AUGUST	SEPTEMBER
UK FORMATION SHARE IN 2011	0.2%	0.3%	0.2%
UK FORMATION SHARE IN 2010	0.2%	0.2%	0.2%
% CHANGE	1.3%	15.6%	-4.2%
RECORD YEAR	1961 (0.9%)	1970 (0.7%)	1964 (0.7%)

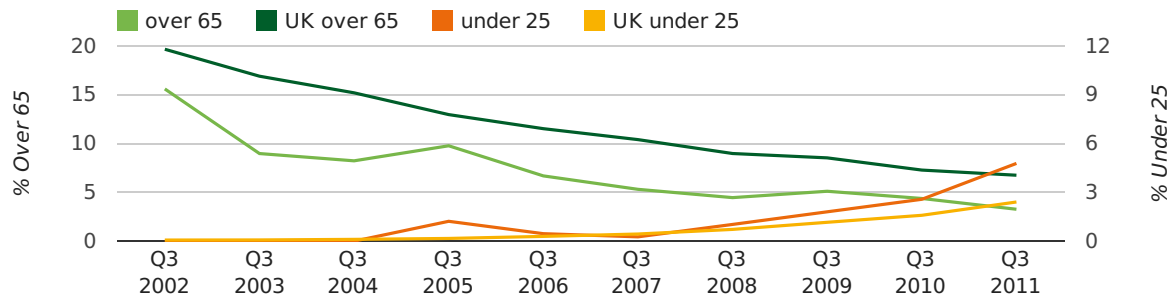
Quarterly Data (Q3 Jul-Sep 2011)

The average age of a director in the third quarter of 2011 was 43.3.

The percentage of directors under the age of 25 was 4.8% compared to the UK figure of 4.0%.

The percentage of directors over the age of 65 was 3.3% compared to the UK figure of 4.1%.

director age by quarter

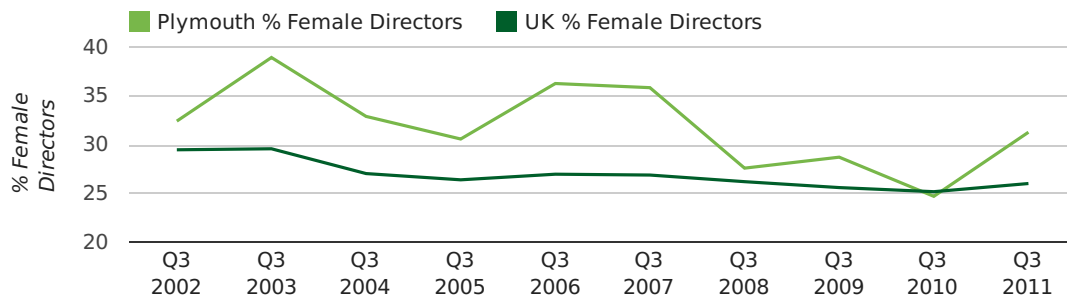


Quarterly Data (Q3 Jul-Sep 2011)

The record third quarter for female directors in Plymouth was in 1862 when 50.0% of all directors were female.

31.3% of all director appointments in Plymouth in the third quarter of 2011 were female. This compares to a UK average of 26.0% for the same period.

director gender by quarter



Previous 12 months (Sep 2010-Sep 2011)

Excluding: LIMITED, LTD, &, UK, SERVICES, THE, (UK), AND, LTD., A, LLP, SOLUTIONS, COMPANY, OF.

WORD	PERCENTAGE	UK WORD	UK PERCENTAGE
PLYMOUTH	2.40%	CONSULTING	5.11%
(SW)	1.36%	MANAGEMENT	4.75%
MANAGEMENT	1.17%	CONSULTANCY	3.19%
CONSULTANCY	0.97%	PROPERTY	2.41%
PROPERTY	0.91%	TRADING	2.06%
WEST	0.91%	DESIGN	1.94%
CIC	0.84%	ASSOCIATES	1.85%
SOUTH	0.84%	BUSINESS	1.82%
ELECTRICAL	0.84%	CONSULTANTS	1.76%
MAINTENANCE	0.78%	ENGINEERING	1.74%
CARE	0.78%	MEDIA	1.72%
DEVON	0.78%	CONSTRUCTION	1.72%
(PLYMOUTH)	0.78%	LONDON	1.63%
TRADING	0.71%	J	1.47%
PLUMBING	0.71%	GLOBAL	1.46%
CONSULTING	0.65%	INVESTMENTS	1.43%
COMMUNITY	0.65%	CARE	1.42%
HOLDINGS	0.65%	IT	1.38%
CENTRE	0.58%	BUILDING	1.30%
GLOBAL	0.58%	PROPERTIES	1.28%
M	0.58%	ELECTRICAL	1.27%
TRUST	0.58%	M	1.25%
HOUSE	0.52%	ENERGY	1.22%
SECURITY	0.52%	TRAINING	1.21%
R	0.52%	S	1.21%

Previous 36 months, excluding companies less than 12 months old

SIC CODE	NUMBER OF COMPANIES	UK COMPANIES
None Supplied	355	204,493
7487 - Other business activities	104	65,177
82990 - Other business support service activities not elsewhere classified	43	29,245
9999 - Dormant Company	42	22,587
99999 - Dormant Company	33	18,281
70229 - Management consultancy activities other than financial management	23	15,760
43210 - Electrical installation	20	2,938
41100 - Development of building projects	18	3,697
96090 - Other service activities not elsewhere classified	17	10,018
4521 - General construction & civil engineering	17	6,321
74909 - Other professional, scientific and technical activities not elsewhere classified	16	7,551
5540 - Bars	16	2,379
4534 - Other building installation	14	2,443
7499 - Non-trading company	14	11,543
9305 - Other service activities	13	10,525
5530 - Restaurants	12	5,640
4533 - Plumbing	12	1,565
93199 - Other sports activities	12	1,510
7020 - Letting of own property	11	1,806
68320 - Management of real estate on a fee or contract basis	11	2,929