

# Richmond

q1 2011 business confidence report



## headlines

- January 2011 saw a new record in company registrations in Richmond when compared to any previous January.
- February 2011 saw a new record in company closures in Richmond when compared to any previous February.
- January 2011 saw a new record in company closures in Richmond when compared to any previous January.

## contents

new company registrations

closed companies (dissolved)

net company growth

uk company share

director age

director gender

naming trends

sic data

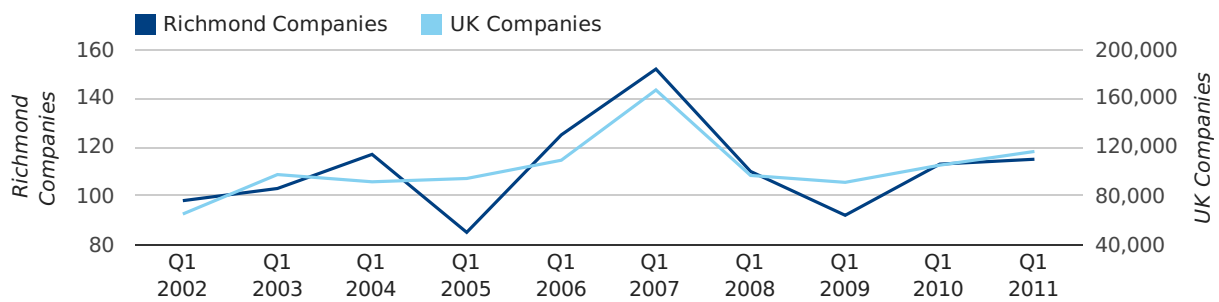
### Quarterly Data (Q1 Jan-Mar 2011)

A total of 115 companies were registered in Richmond during the first quarter of 2011 (Jan 2011 - Mar 2011).

This figure is an increase of 1.8% versus the same period last year (Q1 2010). This figure compares badly to the UK as a whole, which saw an increase of 10.7% against the same period last year.

FIRST QUARTER (JAN 2011 - MAR 2011)	RICHMOND	UK
2011	115	116,391
2010	113	105,137
% CHANGE	1.8%	10.7%
RECORD YEAR	2007 (152)	2007 (166,814)

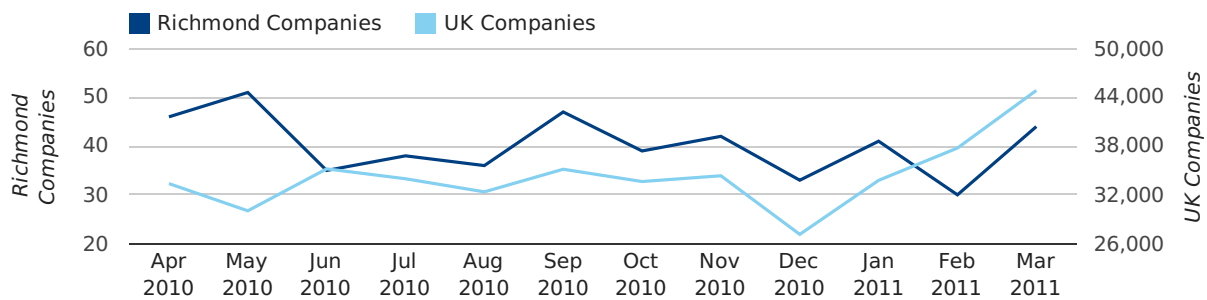
### new companies by quarter



### Monthly Data (Jan, Feb & Mar 2011)

January 2011 saw a new record in company registrations in Richmond when compared to any previous January.

### new companies by month



	JANUARY	FEBRUARY	MARCH
NEW COMPANIES IN 2011	41	30	44
NEW COMPANIES IN 2010	37	29	47
% CHANGE	10.8%	3.4%	-6.4%
RECORD YEAR	2011 (41)	2007 (47)	2007 (67)

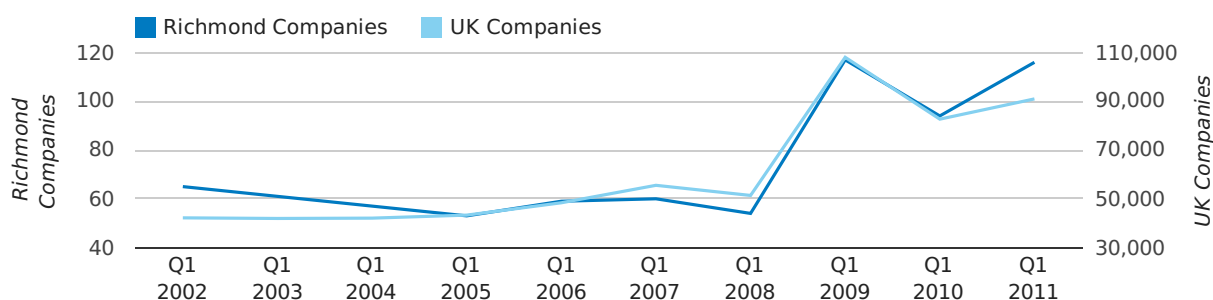
### Quarterly Data (Q1 Jan-Mar 2011)

A total of 116 companies were dissolved in Richmond during the first quarter of 2011 (Jan 2011 - Mar 2011).

This figure is an increase of 23.4% versus the same period last year (Q1 2010). This figure compares poorly to the UK as a whole, which saw an increase of 10.0% against the same period last year.

FIRST QUARTER (JAN 2011 - MAR 2011)	RICHMOND	UK
2011	116	90,986
2010	94	82,677
% CHANGE	23.4%	10.0%
RECORD YEAR	2009 (117)	2009 (108,060)

### dissolved companies by quarter

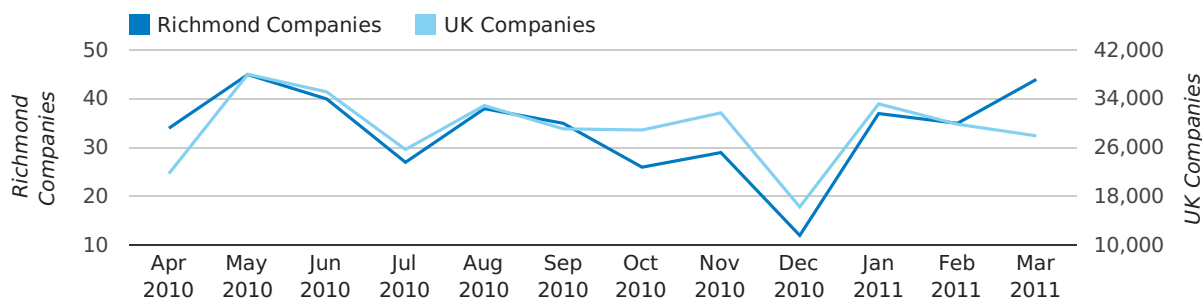


### Monthly Data (Jan, Feb & Mar 2011)

February 2011 saw a new record in company closures in Richmond when compared to any previous February.

January 2011 saw a new record in company closures in Richmond when compared to any previous January.

### dissolved companies by month



	JANUARY	FEBRUARY	MARCH
CLOSED COMPANIES IN 2011	37	35	44
CLOSED COMPANIES IN 2010	27	22	45
% CHANGE	37.0%	59.1%	-2%
RECORD YEAR	2011 (37)	2011 (35)	2009 (74)

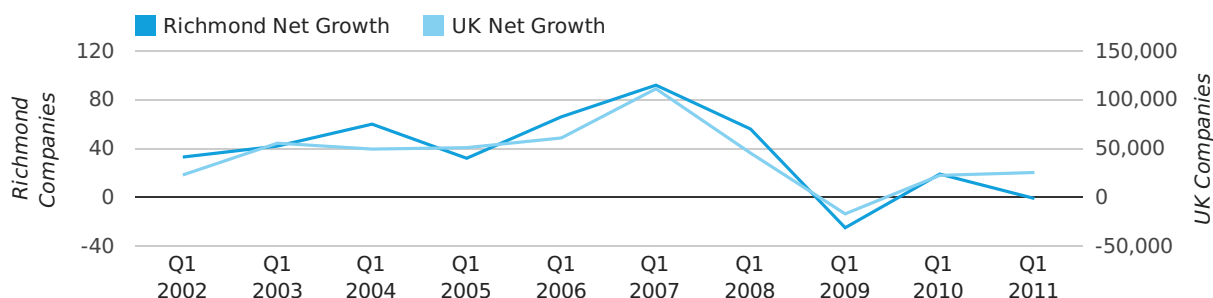
### Quarterly Data (Q1 Jan-Mar 2011)

Net company growth for Richmond during the first quarter of 2011 (Jan 2011 - Mar 2011) was -1 companies.

This represents a decrease of 105.3% on the same period last year.

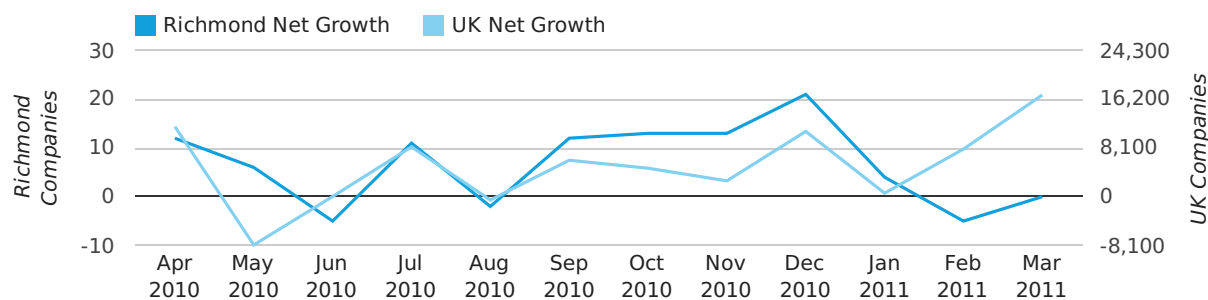
FIRST QUARTER (JAN 2011 - MAR 2011)	RICHMOND	UK
2011	-1	25,405
2010	19	22,460
% CHANGE	-105.3%	13.1%
RECORD YEAR	2007 (92)	2007 (111,282)

### net growth by quarter



### Monthly Data (Jan, Feb & Mar 2011)

### net growth by month



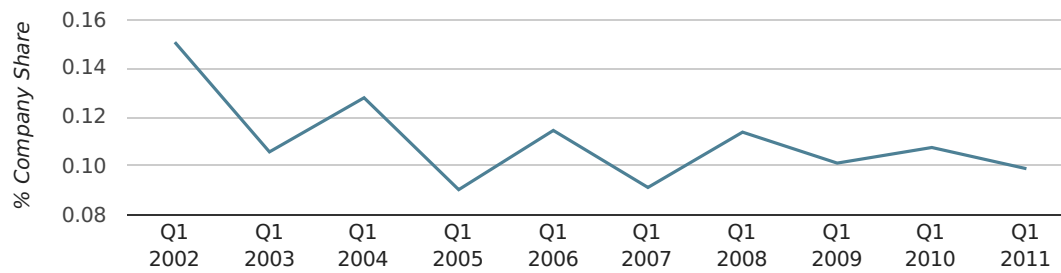
	JANUARY	FEBRUARY	MARCH
NET GROWTH IN 2011	4	-5	0
NET GROWTH IN 2010	10	7	2
% CHANGE	-60.0%	-171.4%	-100.0%
RECORD YEAR	1999 (17)	2004 (29)	2007 (50)

### Quarterly Data (Q1 Jan-Mar 2011)

In the first quarter of 2011, Richmond formed 0.1% of all UK companies.

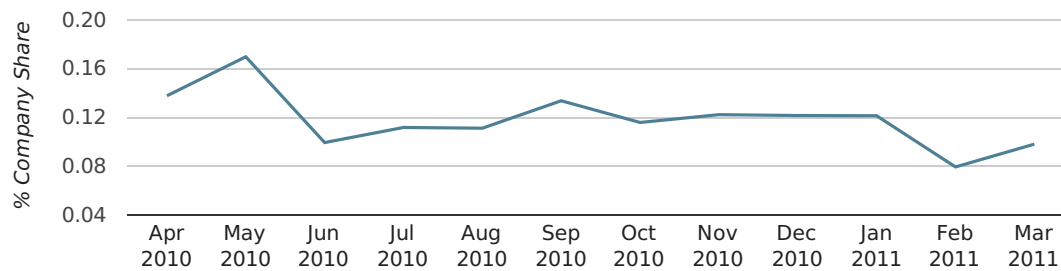
FIRST QUARTER (JAN 2011 - MAR 2011)	RICHMOND
2011	0.1%
2010	0.1%
2009	0.1%
2008	0.1%
2007	0.1%
RECORD YEAR (SINCE 1960)	1988 (0.3%)

### company share by quarter



### Monthly Data (Jan, Feb & Mar 2011)

### company share by month



	JANUARY	FEBRUARY	MARCH
UK FORMATION SHARE IN 2011	0.1%	0.1%	0.1%
UK FORMATION SHARE IN 2010	0.1%	0.1%	0.1%
% CHANGE	-4.4%	-9.0%	-10.7%
RECORD YEAR	1961 (0.7%)	1970 (0.4%)	1988 (0.3%)

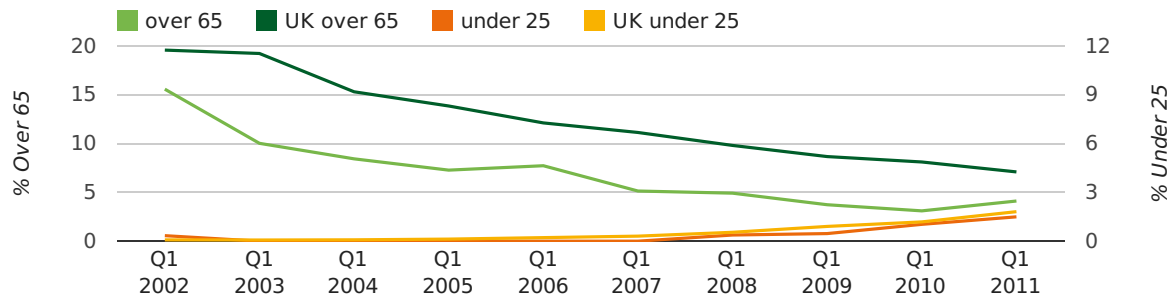
### Quarterly Data (Q1 Jan-Mar 2011)

The average age of a director in the first quarter of 2011 was 44.6.

The percentage of directors under the age of 25 was 1.5% compared to the UK figure of 3.0%.

The percentage of directors over the age of 65 was 4.1% compared to the UK figure of 4.3%.

#### director age by quarter

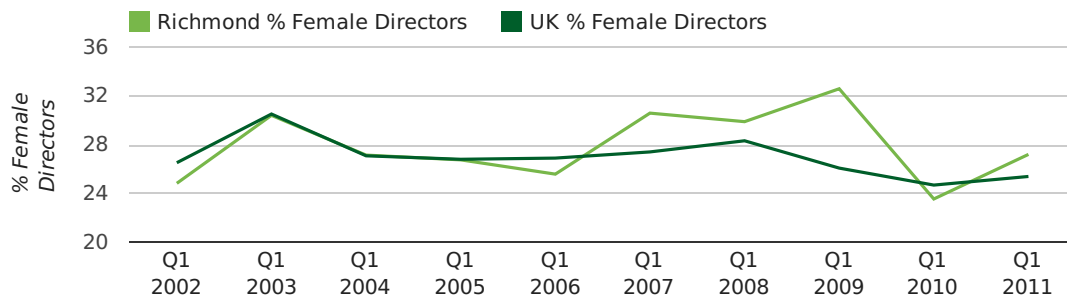


### Quarterly Data (Q1 Jan-Mar 2011)

The record first quarter for female directors in Richmond was in 1861 when 40.0% of all directors were female.

27.2% of all director appointments in Richmond in the first quarter of 2011 were female. This compares to a UK average of 25.4% for the same period.

#### director gender by quarter





## Previous 12 months (Mar 2010-Mar 2011)

Excluding: LIMITED, LTD, &amp;, UK, SERVICES, THE, (UK), AND, LTD., A, LLP, SOLUTIONS, COMPANY, OF.

WORD	PERCENTAGE	UK WORD	UK PERCENTAGE
CONSULTING	3.32%	CONSULTING	5.04%
PARTNERS	1.23%	MANAGEMENT	4.97%
RICHMOND	1.11%	CONSULTANCY	3.16%
CONSULTANCY	1.11%	PROPERTY	2.38%
NSAVE	0.98%	TRADING	2.10%
MANAGEMENT	0.98%	DESIGN	1.93%
MEDIA	0.86%	ASSOCIATES	1.92%
TRADING	0.74%	BUSINESS	1.87%
LONDON	0.74%	CONSTRUCTION	1.80%
KEW	0.74%	CONSULTANTS	1.76%
ASSOCIATES	0.74%	MEDIA	1.69%
BUSINESS	0.61%	ENGINEERING	1.61%
HOLDINGS	0.61%	LONDON	1.60%
I	0.61%	CARE	1.45%
GLOBAL	0.61%	J	1.45%
MARKETING	0.61%	GLOBAL	1.44%
GREEN	0.49%	INVESTMENTS	1.43%
FINANCIAL	0.49%	IT	1.41%
INGRESSO	0.49%	PROPERTIES	1.36%
CREATIVE	0.49%	BUILDING	1.34%
PROPERTY	0.49%	M	1.30%
GROUP	0.49%	ELECTRICAL	1.28%
MEDICAL	0.37%	S	1.24%
M	0.37%	INTERNATIONAL	1.23%
BIKELAB	0.37%	SYSTEMS	1.23%

## Previous 36 months, excluding companies less than 12 months old

SIC CODE	NUMBER OF COMPANIES	UK COMPANIES
None Supplied	225	202,798
7487 - Other business activities	54	60,968
7414 - Business & management consultancy	47	12,916
70229 - Management consultancy activities other than financial management	39	16,150
82990 - Other business support service activities not elsewhere classified	33	30,253
7222 - Other software consultancy and supply	27	7,000
62020 - Information technology consultancy activities	22	10,246
62090 - Other information technology service activities	16	6,996
9999 - Dormant Company	14	19,765
74990 - Non-trading company	10	8,695
7260 - Other computer related activities	9	7,789
7499 - Non-trading company	9	11,316
9305 - Other service activities	9	8,740
74909 - Other professional, scientific and technical activities not elsewhere classified	9	7,788
96090 - Other service activities not elsewhere classified	8	10,085
41100 - Development of building projects	7	3,921
9231 - Artistic & literary creation	7	1,001
61900 - Other telecommunications activities	6	1,228
98000 - Residents property management	6	3,154
8514 - Other human health activities	6	2,423