

Rickmansworth

q1 2011 business confidence report



headlines

- January 2011 saw a new record in company closures in Rickmansworth when compared to any previous January.

contents

new company registrations

closed companies (dissolved)

net company growth

uk company share

director age

director gender

naming trends

sic data

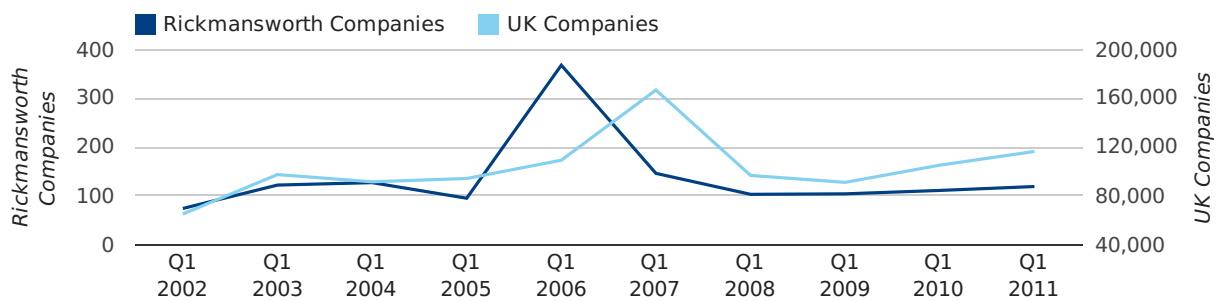
Quarterly Data (Q1 Jan-Mar 2011)

A total of 119 companies were registered in Rickmansworth during the first quarter of 2011 (Jan 2011 - Mar 2011).

This figure is an increase of 7.2% versus the same period last year (Q1 2010). This figure compares equally to the UK as a whole, which saw an increase of 10.7% against the same period last year.

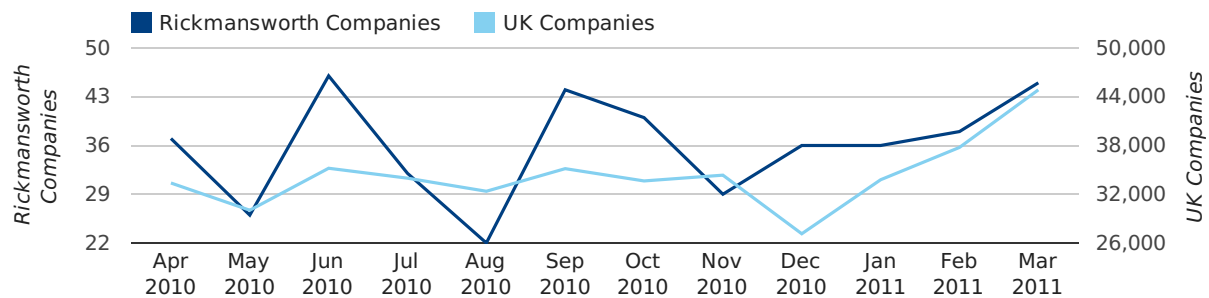
FIRST QUARTER (JAN 2011 - MAR 2011)	RICKMANSWORTH	UK
2011	119	116,391
2010	111	105,137
% CHANGE	7.2%	10.7%
RECORD YEAR	2006 (368)	2007 (166,814)

new companies by quarter



Monthly Data (Jan, Feb & Mar 2011)

new companies by month



	JANUARY	FEBRUARY	MARCH
NEW COMPANIES IN 2011	36	38	45
NEW COMPANIES IN 2010	32	39	40
% CHANGE	12.5%	-2.6%	12.5%
RECORD YEAR	2006 (129)	2006 (124)	2006 (115)

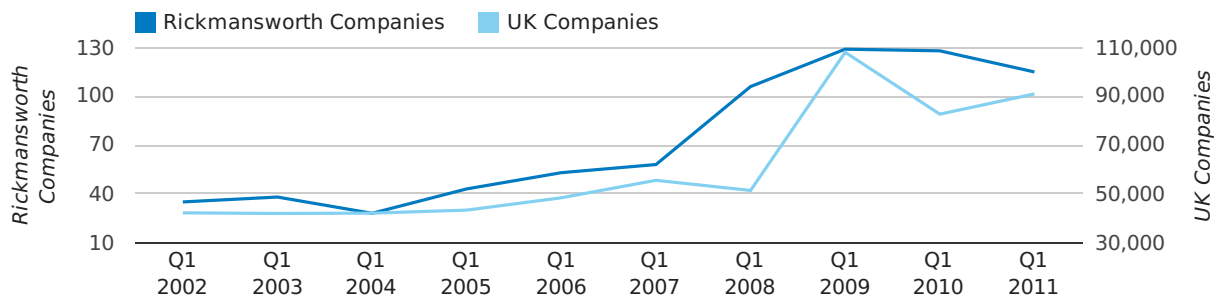
Quarterly Data (Q1 Jan-Mar 2011)

A total of 115 companies were dissolved in Rickmansworth during the first quarter of 2011 (Jan 2011 - Mar 2011).

This figure is a decrease of 10.2% versus the same period last year (Q1 2010). This figure compares well to the UK as a whole, which saw an increase of 10.0% against the same period last year.

FIRST QUARTER (JAN 2011 - MAR 2011)	RICKMANSWORTH	UK
2011	115	90,986
2010	128	82,677
% CHANGE	-10.2%	10.0%
RECORD YEAR	2009 (129)	2009 (108,060)

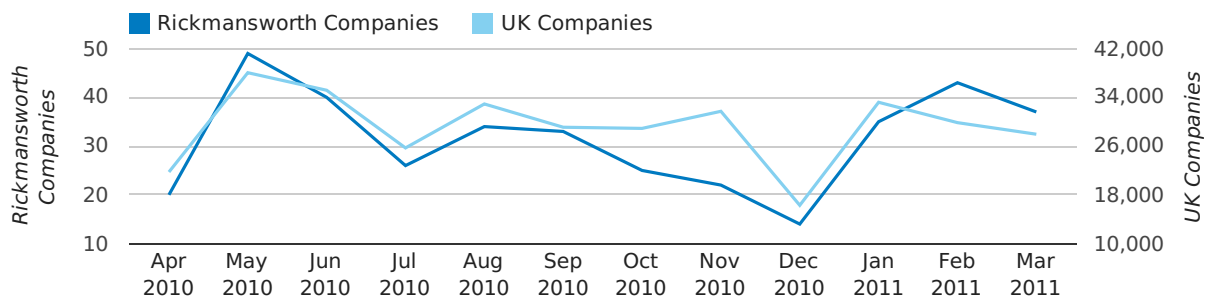
dissolved companies by quarter



Monthly Data (Jan, Feb & Mar 2011)

January 2011 saw a new record in company closures in Rickmansworth when compared to any previous January.

dissolved companies by month



	JANUARY	FEBRUARY	MARCH
CLOSED COMPANIES IN 2011	35	43	37
CLOSED COMPANIES IN 2010	32	55	41
% CHANGE	9.4%	-21.8%	-10%
RECORD YEAR	2011 (35)	2008 (85)	2009 (78)

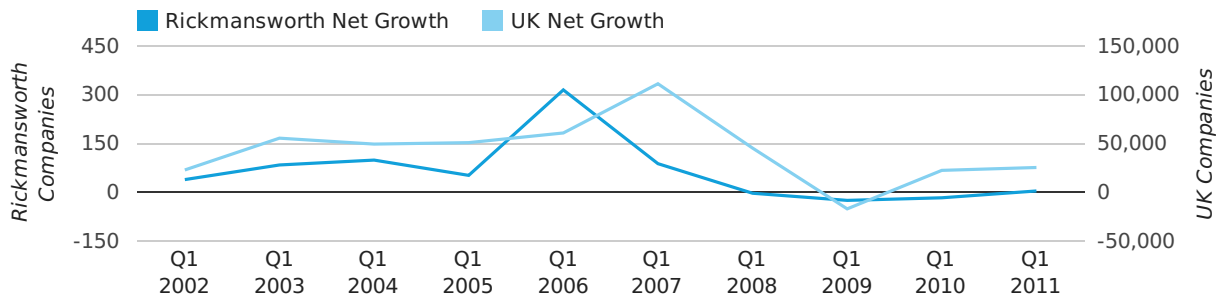
Quarterly Data (Q1 Jan-Mar 2011)

Net company growth for Rickmansworth during the first quarter of 2011 (Jan 2011 - Mar 2011) was 4 companies.

This represents an increase of 123.5% on the same period last year.

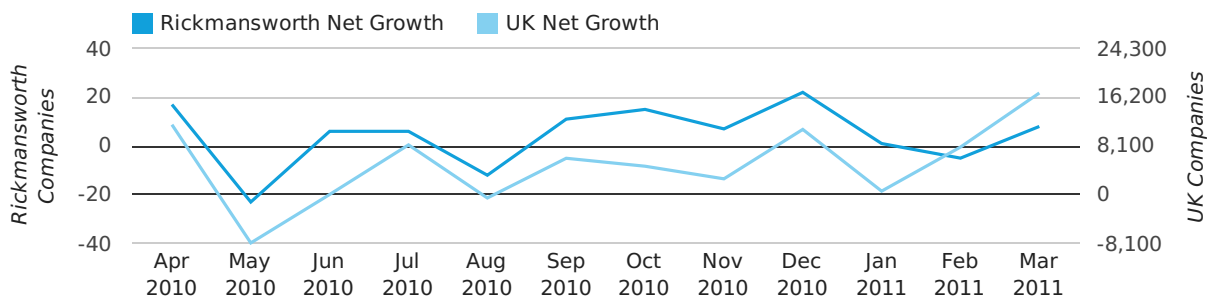
FIRST QUARTER (JAN 2011 - MAR 2011)	RICKMANSWORTH	UK
2011	4	25,405
2010	-17	22,460
% CHANGE	-123.5%	13.1%
RECORD YEAR	2006 (315)	2007 (111,282)

net growth by quarter



Monthly Data (Jan, Feb & Mar 2011)

net growth by month



Warning: Division by zero in /var/clients/duport/v3/website/confidence-reports/includes/parseBlurb.php(96) : eval()'d code on line 1
 Warning: Division by zero in /var/clients/duport/v3/website/confidence-reports/includes/parseBlurb.php(96) : eval()'d code on line 1

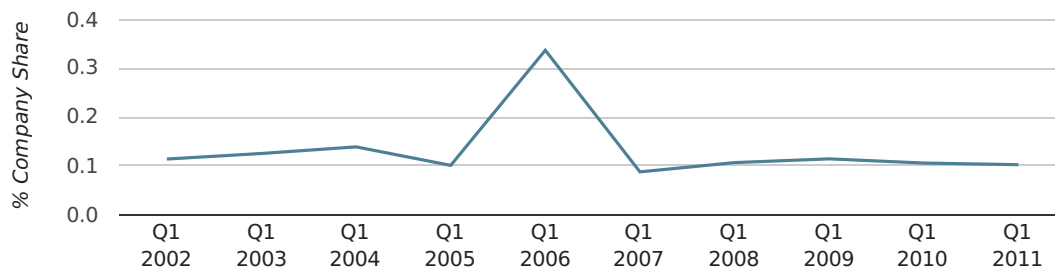
	JANUARY	FEBRUARY	MARCH
NET GROWTH IN 2011	1	-5	8
NET GROWTH IN 2010	0	-16	-1
% CHANGE	0.0%	-68.8%	-900.0%
RECORD YEAR	2006 (108)	2006 (114)	2006 (93)

Quarterly Data (Q1 Jan-Mar 2011)

In the first quarter of 2011, Rickmansworth formed 0.1% of all UK companies.

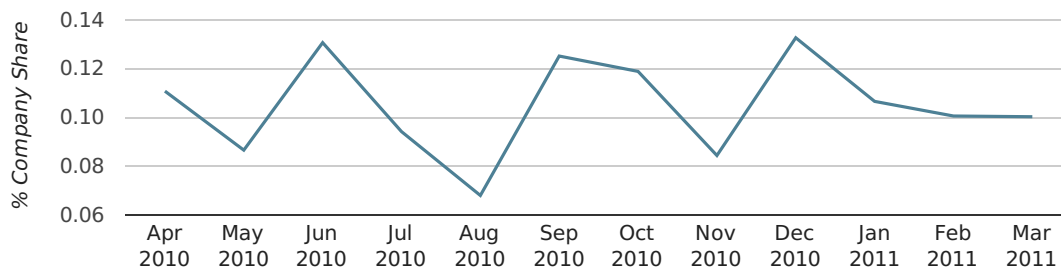
FIRST QUARTER (JAN 2011 - MAR 2011)	RICKMANSWORTH
2011	0.1%
2010	0.1%
2009	0.1%
2008	0.1%
2007	0.1%
RECORD YEAR (SINCE 1960)	2006 (0.3%)

company share by quarter



Monthly Data (Jan, Feb & Mar 2011)

company share by month



	JANUARY	FEBRUARY	MARCH
UK FORMATION SHARE IN 2011	0.1%	0.1%	0.1%
UK FORMATION SHARE IN 2010	0.1%	0.1%	0.1%
% CHANGE	-2.9%	-14.3%	7.3%
RECORD YEAR	1976 (0.4%)	2006 (0.4%)	1963 (0.4%)

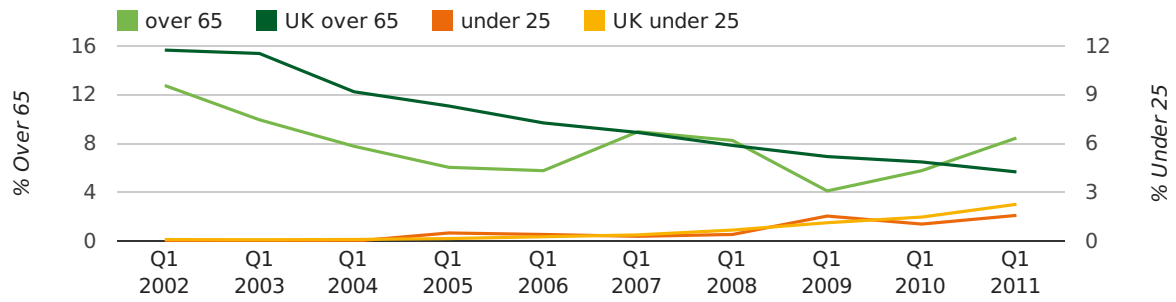
Quarterly Data (Q1 Jan-Mar 2011)

The average age of a director in the first quarter of 2011 was 47.2.

The percentage of directors under the age of 25 was 1.6% compared to the UK figure of 3.0%.

The percentage of directors over the age of 65 was 8.5% compared to the UK figure of 4.3%.

director age by quarter

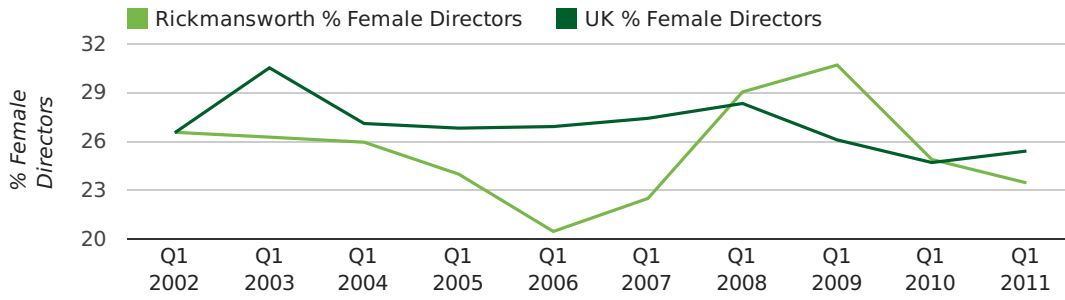


Quarterly Data (Q1 Jan-Mar 2011)

The record first quarter for female directors in Rickmansworth was in 1861 when 40.0% of all directors were female.

23.4% of all director appointments in Rickmansworth in the first quarter of 2011 were female. This compares to a UK average of 25.4% for the same period.

director gender by quarter



Previous 12 months (Mar 2010-Mar 2011)

Excluding: LIMITED, LTD, &, UK, SERVICES, THE, (UK), AND, LTD., A, LLP, SOLUTIONS, COMPANY, OF.

WORD	PERCENTAGE	UK WORD	UK PERCENTAGE
CONSULTING	1.74%	CONSULTING	5.04%
MANAGEMENT	1.74%	MANAGEMENT	4.97%
CONSULTANCY	1.20%	CONSULTANCY	3.16%
LONDON	1.07%	PROPERTY	2.38%
ASSOCIATES	0.93%	TRADING	2.10%
BUILDING	0.93%	DESIGN	1.93%
PRODUCTIONS	0.93%	ASSOCIATES	1.92%
INTERNATIONAL	0.80%	BUSINESS	1.87%
MEDIA	0.80%	CONSTRUCTION	1.80%
R	0.80%	CONSULTANTS	1.76%
SPORTS	0.67%	MEDIA	1.69%
M	0.53%	ENGINEERING	1.61%
CONSULTANTS	0.53%	LONDON	1.60%
DESIGN	0.53%	CARE	1.45%
MEDICAL	0.53%	J	1.45%
GLOBAL	0.53%	GLOBAL	1.44%
S	0.53%	INVESTMENTS	1.43%
ENERGY	0.53%	IT	1.41%
HOMES	0.53%	PROPERTIES	1.36%
ENGINEERING	0.53%	BUILDING	1.34%
DIRECT	0.53%	M	1.30%
HOME	0.40%	ELECTRICAL	1.28%
DEVELOPMENTS	0.40%	S	1.24%
PARTS	0.40%	INTERNATIONAL	1.23%
DENTAL	0.40%	SYSTEMS	1.23%

Previous 36 months, excluding companies less than 12 months old

SIC CODE	NUMBER OF COMPANIES	UK COMPANIES
None Supplied	170	202,798
82990 - Other business support service activities not elsewhere classified	53	30,253
7487 - Other business activities	50	60,968
9999 - Dormant Company	30	19,765
7414 - Business & management consultancy	23	12,916
70229 - Management consultancy activities other than financial management	23	16,150
99999 - Dormant Company	21	18,336
74990 - Non-trading company	17	8,695
62020 - Information technology consultancy activities	14	10,246
7499 - Non-trading company	13	11,316
41100 - Development of building projects	12	3,921
9305 - Other service activities	11	8,740
70100 - Activities of head offices	10	2,849
96090 - Other service activities not elsewhere classified	10	10,085
7222 - Other software consultancy and supply	10	7,000
74909 - Other professional, scientific and technical activities not elsewhere classified	8	7,788
62090 - Other information technology service activities	8	6,996
5530 - Restaurants	7	4,898
7011 - Development & sell real estate	7	2,654
86900 - Other human health activities	7	4,092