

Rochdale

q1 2011 business confidence report



headlines

- Q1 2011 saw a new record in company closures in Rochdale when compared to any previous Q1.
- February 2011 saw a new record in company closures in Rochdale when compared to any previous February.
- January 2011 saw a new record in company closures in Rochdale when compared to any previous January.

contents

new company registrations

closed companies (dissolved)

net company growth

uk company share

director age

director gender

naming trends

sic data

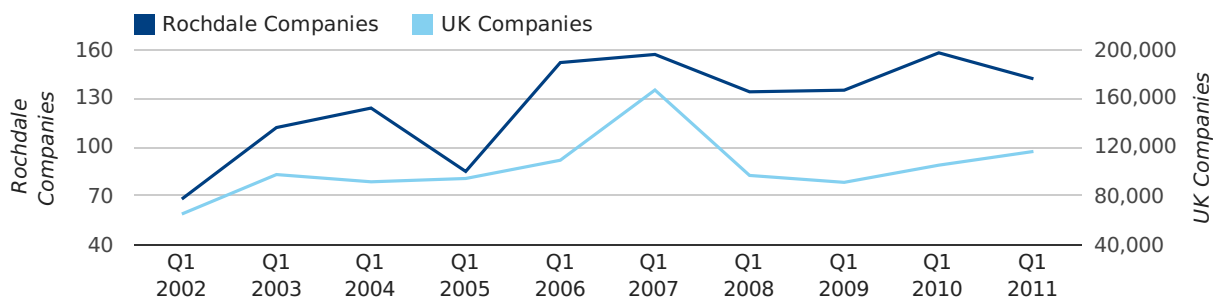
Quarterly Data (Q1 Jan-Mar 2011)

A total of 142 companies were registered in Rochdale during the first quarter of 2011 (Jan 2011 - Mar 2011).

This figure is a decrease of 10.1% versus the same period last year (Q1 2010). This figure compares badly to the UK as a whole, which saw an increase of 10.7% against the same period last year.

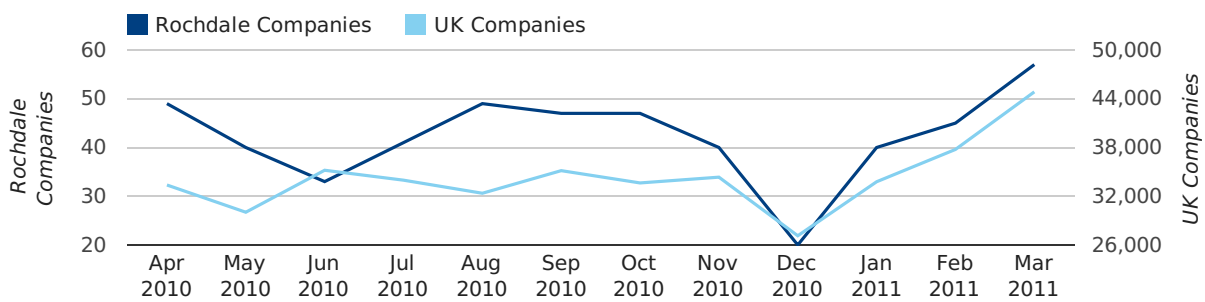
FIRST QUARTER (JAN 2011 - MAR 2011)	ROCHDALE	UK
2011	142	116,391
2010	158	105,137
% CHANGE	-10.1%	10.7%
RECORD YEAR	2010 (158)	2007 (166,814)

new companies by quarter



Monthly Data (Jan, Feb & Mar 2011)

new companies by month



	JANUARY	FEBRUARY	MARCH
NEW COMPANIES IN 2011	40	45	57
NEW COMPANIES IN 2010	37	53	68
% CHANGE	8.1%	-15.1%	-16.2%
RECORD YEAR	2006 (48)	2007 (54)	2010 (68)

Quarterly Data (Q1 Jan-Mar 2011)

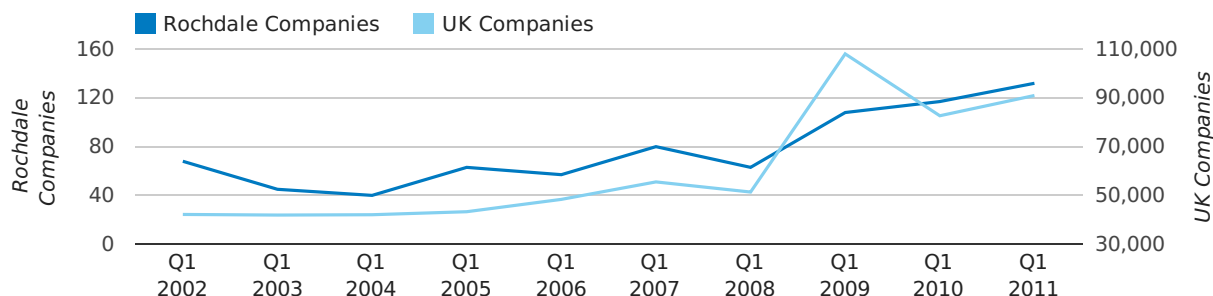
Q1 2011 saw a new record in company closures in Rochdale when compared to any previous Q1.

A total of 132 companies were dissolved in Rochdale during the first quarter of 2011 (Jan 2011 - Mar 2011).

This figure is an increase of 12.8% versus the same period last year (Q1 2010). This figure compares poorly to the UK as a whole, which saw an increase of 10.0% against the same period last year.

FIRST QUARTER (JAN 2011 - MAR 2011)	ROCHDALE	UK
2011	132	90,986
2010	117	82,677
% CHANGE	12.8%	10.0%
RECORD YEAR	2011 (132)	2009 (108,060)

dissolved companies by quarter

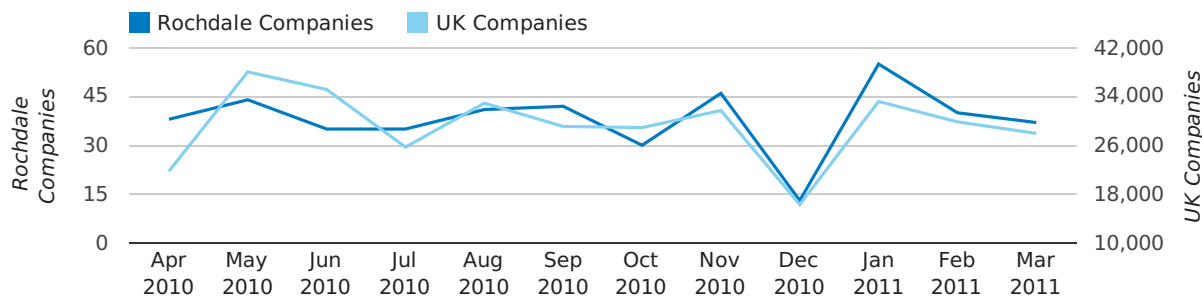


Monthly Data (Jan, Feb & Mar 2011)

February 2011 saw a new record in company closures in Rochdale when compared to any previous February.

January 2011 saw a new record in company closures in Rochdale when compared to any previous January.

dissolved companies by month



	JANUARY	FEBRUARY	MARCH
CLOSED COMPANIES IN 2011	55	40	37
CLOSED COMPANIES IN 2010	31	35	51
% CHANGE	77.4%	14.3%	-27%
RECORD YEAR	2011 (55)	2011 (40)	2009 (72)

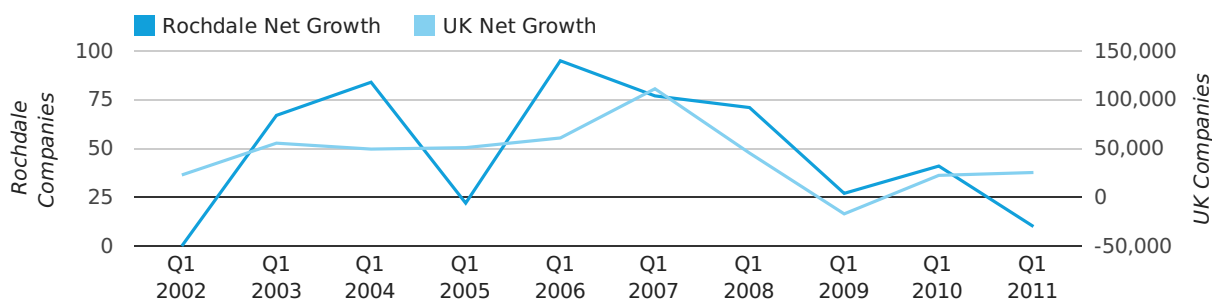
Quarterly Data (Q1 Jan-Mar 2011)

Net company growth for Rochdale during the first quarter of 2011 (Jan 2011 - Mar 2011) was 10 companies.

This represents a decrease of 75.6% on the same period last year.

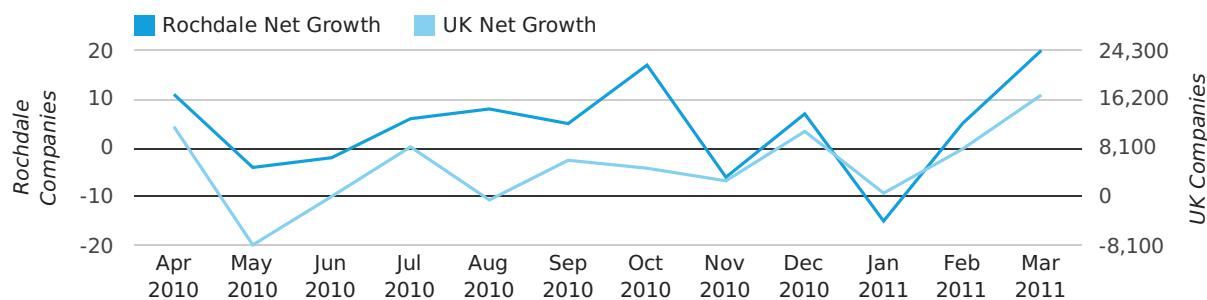
FIRST QUARTER (JAN 2011 - MAR 2011)	ROCHDALE	UK
2011	10	25,405
2010	41	22,460
% CHANGE	-75.6%	13.1%
RECORD YEAR	2006 (95)	2007 (111,282)

net growth by quarter



Monthly Data (Jan, Feb & Mar 2011)

net growth by month



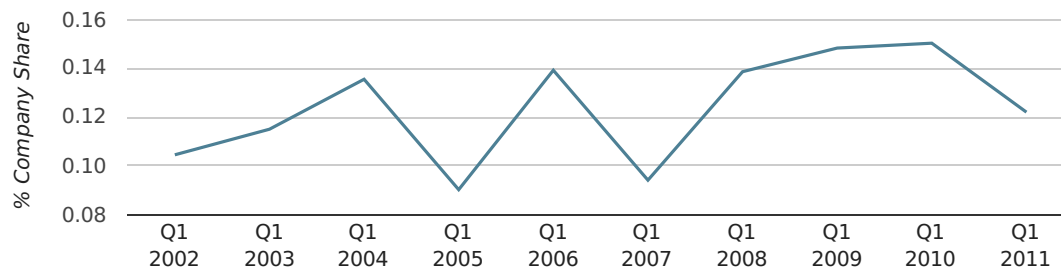
	JANUARY	FEBRUARY	MARCH
NET GROWTH IN 2011	-15	5	20
NET GROWTH IN 2010	6	18	17
% CHANGE	-350.0%	-72.2%	17.6%
RECORD YEAR	2009 (29)	2007 (35)	2006 (50)

Quarterly Data (Q1 Jan-Mar 2011)

In the first quarter of 2011, Rochdale formed 0.1% of all UK companies.

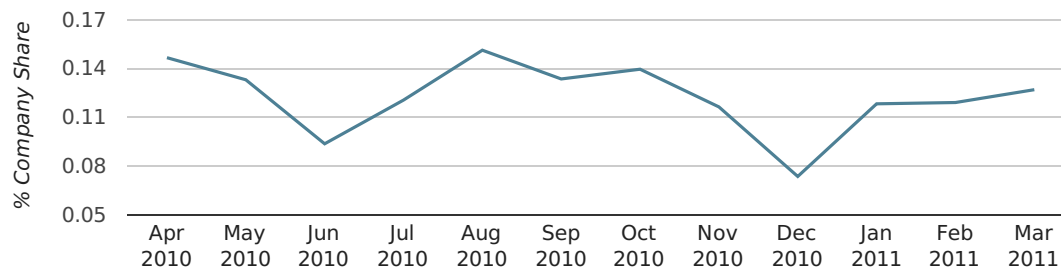
FIRST QUARTER (JAN 2011 - MAR 2011)	ROCHDALE
2011	0.1%
2010	0.2%
2009	0.1%
2008	0.1%
2007	0.1%
RECORD YEAR (SINCE 1960)	1968 (0.4%)

company share by quarter



Monthly Data (Jan, Feb & Mar 2011)

company share by month



	JANUARY	FEBRUARY	MARCH
UK FORMATION SHARE IN 2011	0.1%	0.1%	0.1%
UK FORMATION SHARE IN 2010	0.1%	0.2%	0.2%
% CHANGE	-6.8%	-25.3%	-20.1%
RECORD YEAR	1969 (0.4%)	1968 (0.6%)	1968 (0.7%)

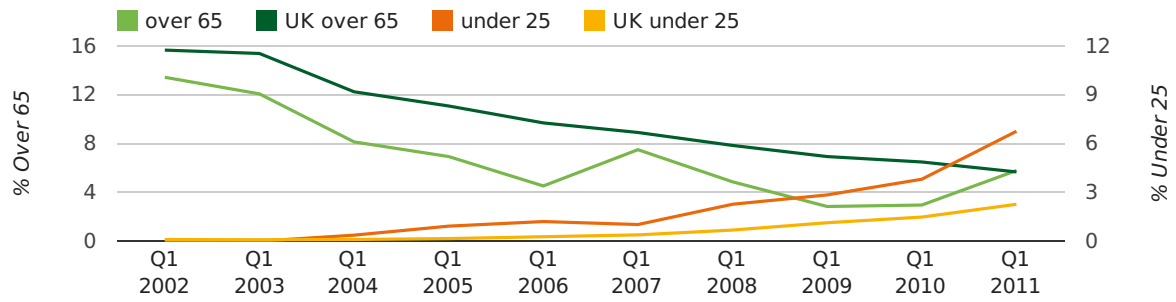
Quarterly Data (Q1 Jan-Mar 2011)

The average age of a director in the first quarter of 2011 was 41.1.

The percentage of directors under the age of 25 was 6.8% compared to the UK figure of 3.0%.

The percentage of directors over the age of 65 was 5.8% compared to the UK figure of 4.3%.

director age by quarter

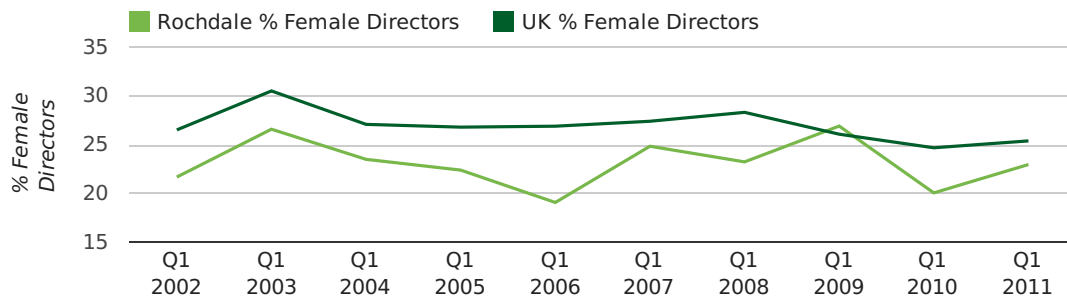


Quarterly Data (Q1 Jan-Mar 2011)

The record first quarter for female directors in Rochdale was in 1861 when 40.0% of all directors were female.

23.0% of all director appointments in Rochdale in the first quarter of 2011 were female. This compares to a UK average of 25.4% for the same period.

director gender by quarter



Previous 12 months (Mar 2010-Mar 2011)

Excluding: LIMITED, LTD, &, UK, SERVICES, THE, (UK), AND, LTD., A, LLP, SOLUTIONS, COMPANY, OF.

WORD	PERCENTAGE	UK WORD	UK PERCENTAGE
ROCHDALE	1.92%	CONSULTING	5.04%
TRADING	1.13%	MANAGEMENT	4.97%
MANAGEMENT	1.13%	CONSULTANCY	3.16%
CENTRE	1.02%	PROPERTY	2.38%
MEDICAL	0.90%	TRADING	2.10%
CARE	0.90%	DESIGN	1.93%
SECURITY	0.79%	ASSOCIATES	1.92%
S	0.79%	BUSINESS	1.87%
(ROCHDALE)	0.79%	CONSTRUCTION	1.80%
LOUNGE	0.79%	CONSULTANTS	1.76%
ELECTRICAL	0.68%	MEDIA	1.69%
PROPERTY	0.68%	ENGINEERING	1.61%
J	0.68%	LONDON	1.60%
M	0.68%	CARE	1.45%
MEDIA	0.56%	J	1.45%
R	0.56%	GLOBAL	1.44%
CO	0.56%	INVESTMENTS	1.43%
ENGINEERING	0.56%	IT	1.41%
CAR	0.56%	PROPERTIES	1.36%
GO	0.56%	BUILDING	1.34%
SYSTEMS	0.56%	M	1.30%
INVESTMENTS	0.56%	ELECTRICAL	1.28%
BUILDING	0.56%	S	1.24%
COMMUNITY	0.45%	INTERNATIONAL	1.23%
FRIENDS	0.45%	SYSTEMS	1.23%

Previous 36 months, excluding companies less than 12 months old

SIC CODE	NUMBER OF COMPANIES	UK COMPANIES
None Supplied	332	202,798
7487 - Other business activities	140	60,968
82990 - Other business support service activities not elsewhere classified	81	30,253
9999 - Dormant Company	20	19,765
99999 - Dormant Company	16	18,336
9305 - Other service activities	14	8,740
7260 - Other computer related activities	11	7,789
74909 - Other professional, scientific and technical activities not elsewhere classified	11	7,788
62020 - Information technology consultancy activities	11	10,246
70229 - Management consultancy activities other than financial management	10	16,150
7414 - Business & management consultancy	9	12,916
96090 - Other service activities not elsewhere classified	9	10,085
8512 - Medical practice activities	9	1,699
86900 - Other human health activities	8	4,092
86210 - General medical practice activities	8	1,874
56101 - Licensed restaurants	8	2,736
74990 - Non-trading company	7	8,695
4542 - Joinery installation	6	899
7222 - Other software consultancy and supply	6	7,000
62090 - Other information technology service activities	6	6,996