

Salisbury

q1 2011 business confidence report



headlines

- February 2011 saw a new record in company closures in Salisbury when compared to any previous February.

contents

new company registrations

closed companies (dissolved)

net company growth

uk company share

director age

director gender

naming trends

sic data

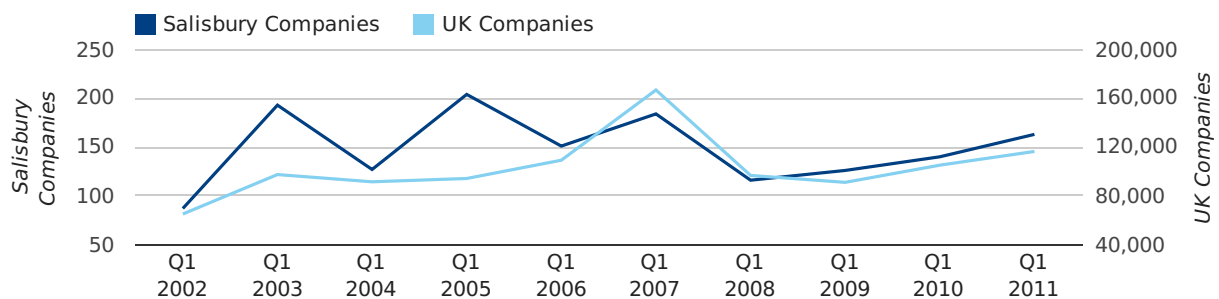
Quarterly Data (Q1 Jan-Mar 2011)

A total of 163 companies were registered in Salisbury during the first quarter of 2011 (Jan 2011 - Mar 2011).

This figure is an increase of 16.4% versus the same period last year (Q1 2010). This figure compares well to the UK as a whole, which saw an increase of 10.7% against the same period last year.

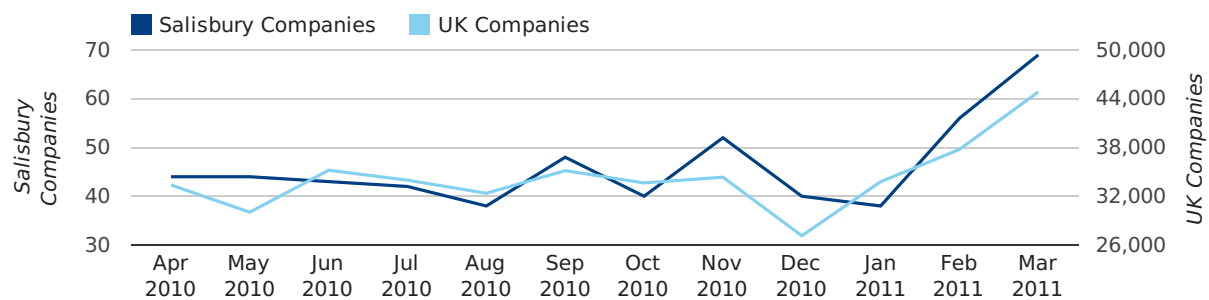
FIRST QUARTER (JAN 2011 - MAR 2011)	SALISBURY	UK
2011	163	116,391
2010	140	105,137
% CHANGE	16.4%	10.7%
RECORD YEAR	2005 (204)	2007 (166,814)

new companies by quarter



Monthly Data (Jan, Feb & Mar 2011)

new companies by month



	JANUARY	FEBRUARY	MARCH
NEW COMPANIES IN 2011	38	56	69
NEW COMPANIES IN 2010	32	48	60
% CHANGE	18.8%	16.7%	15.0%
RECORD YEAR	2005 (116)	2003 (68)	2007 (77)

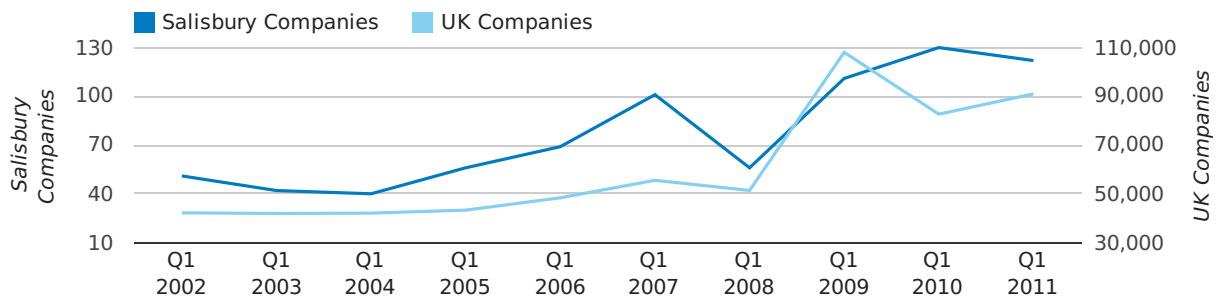
Quarterly Data (Q1 Jan-Mar 2011)

A total of 122 companies were dissolved in Salisbury during the first quarter of 2011 (Jan 2011 - Mar 2011).

This figure is a decrease of 6.2% versus the same period last year (Q1 2010). This figure compares well to the UK as a whole, which saw an increase of 10.0% against the same period last year.

FIRST QUARTER (JAN 2011 - MAR 2011)	SALISBURY	UK
2011	122	90,986
2010	130	82,677
% CHANGE	-6.2%	10.0%
RECORD YEAR	2010 (130)	2009 (108,060)

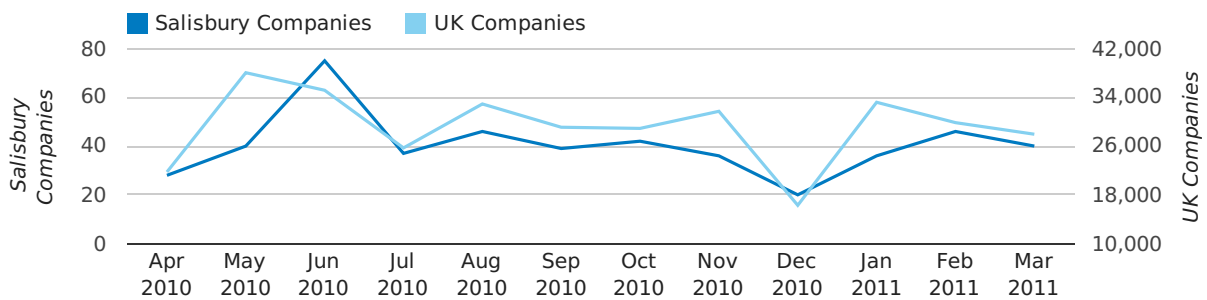
dissolved companies by quarter



Monthly Data (Jan, Feb & Mar 2011)

February 2011 saw a new record in company closures in Salisbury when compared to any previous February.

dissolved companies by month



	JANUARY	FEBRUARY	MARCH
CLOSED COMPANIES IN 2011	36	46	40
CLOSED COMPANIES IN 2010	31	46	53
% CHANGE	16.1%	0.0%	-25%
RECORD YEAR	2009 (39)	2011 (46)	2010 (53)

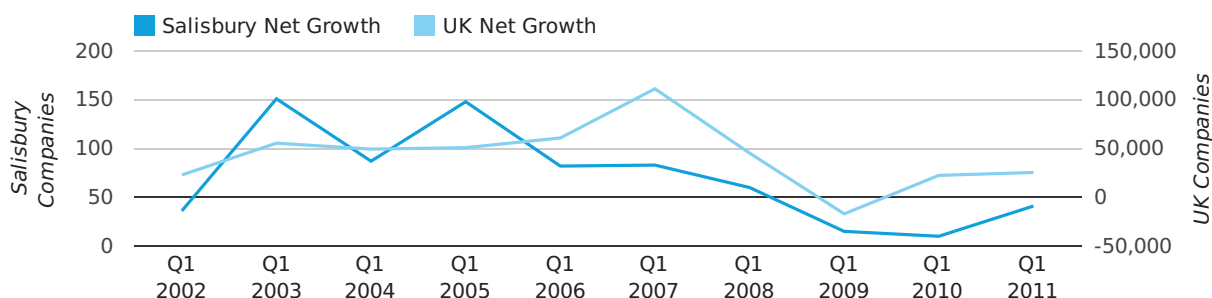
Quarterly Data (Q1 Jan-Mar 2011)

Net company growth for Salisbury during the first quarter of 2011 (Jan 2011 - Mar 2011) was 41 companies.

This represents an increase of 310.0% on the same period last year.

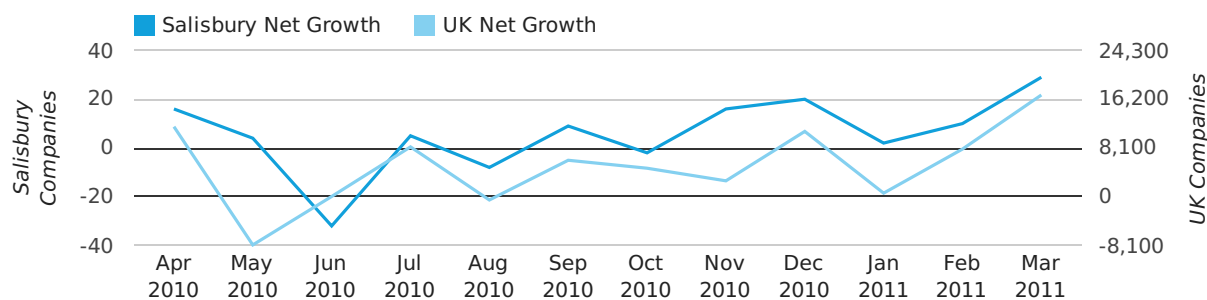
FIRST QUARTER (JAN 2011 - MAR 2011)	SALISBURY	UK
2011	41	25,405
2010	10	22,460
% CHANGE	310.0%	13.1%
RECORD YEAR	2003 (151)	2007 (111,282)

net growth by quarter



Monthly Data (Jan, Feb & Mar 2011)

net growth by month



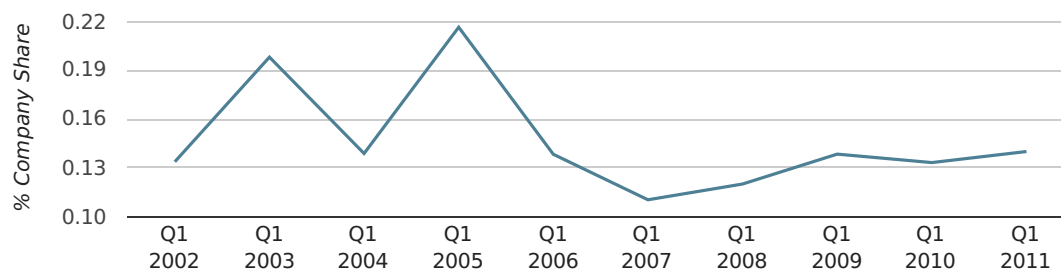
	JANUARY	FEBRUARY	MARCH
NET GROWTH IN 2011	2	10	29
NET GROWTH IN 2010	1	2	7
% CHANGE	100.0%	400.0%	314.3%
RECORD YEAR	2005 (95)	2003 (49)	2003 (57)

Quarterly Data (Q1 Jan-Mar 2011)

In the first quarter of 2011, Salisbury formed 0.1% of all UK companies.

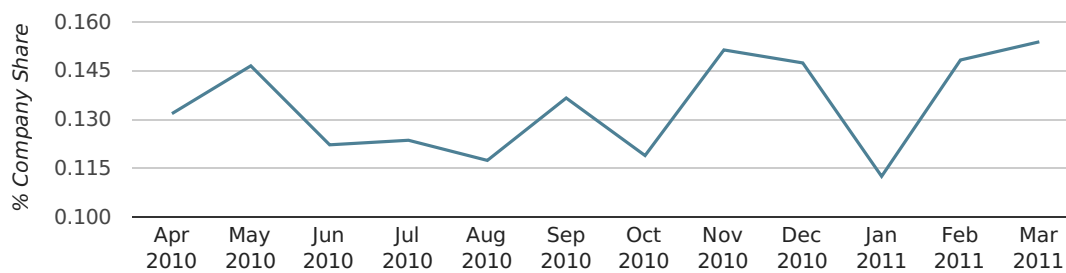
FIRST QUARTER (JAN 2011 - MAR 2011)	SALISBURY
2011	0.1%
2010	0.1%
2009	0.1%
2008	0.1%
2007	0.1%
RECORD YEAR (SINCE 1960)	1966 (0.3%)

company share by quarter



Monthly Data (Jan, Feb & Mar 2011)

company share by month



	JANUARY	FEBRUARY	MARCH
UK FORMATION SHARE IN 2011	0.1%	0.1%	0.2%
UK FORMATION SHARE IN 2010	0.1%	0.1%	0.1%
% CHANGE	2.5%	2.6%	9.7%
RECORD YEAR	1967 (0.7%)	1968 (0.6%)	1964 (0.7%)

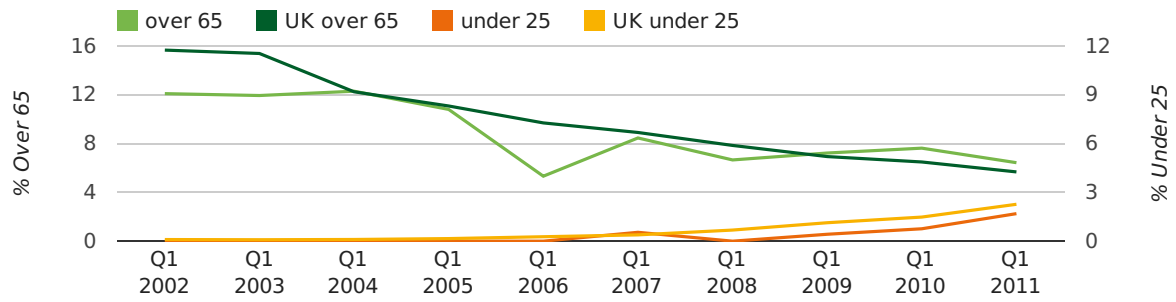
Quarterly Data (Q1 Jan-Mar 2011)

The average age of a director in the first quarter of 2011 was 48.4.

The percentage of directors under the age of 25 was 1.7% compared to the UK figure of 3.0%.

The percentage of directors over the age of 65 was 6.4% compared to the UK figure of 4.3%.

director age by quarter

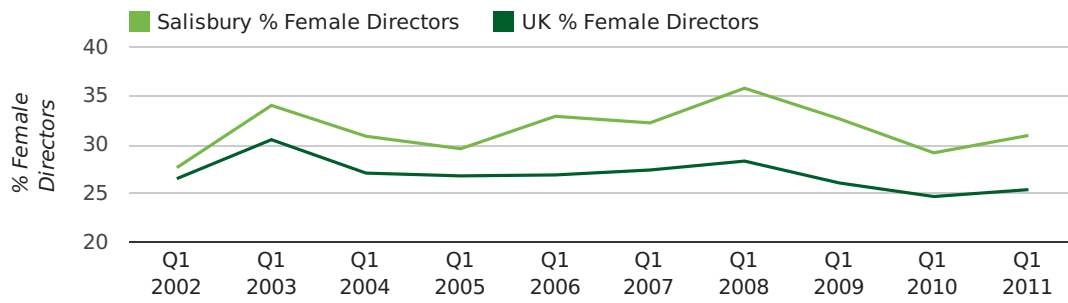


Quarterly Data (Q1 Jan-Mar 2011)

The record first quarter for female directors in Salisbury was in 1861 when 40.0% of all directors were female.

31.0% of all director appointments in Salisbury in the first quarter of 2011 were female. This compares to a UK average of 25.4% for the same period.

director gender by quarter



Previous 12 months (Mar 2010-Mar 2011)

Excluding: LIMITED, LTD, &, UK, SERVICES, THE, (UK), AND, LTD., A, LLP, SOLUTIONS, COMPANY, OF.

WORD	PERCENTAGE	UK WORD	UK PERCENTAGE
MANAGEMENT	2.29%	CONSULTING	5.04%
CONSULTING	1.67%	MANAGEMENT	4.97%
CONSULTANCY	1.15%	CONSULTANCY	3.16%
DEVELOPMENTS	0.83%	PROPERTY	2.38%
SALISBURY	0.73%	TRADING	2.10%
BUSINESS	0.73%	DESIGN	1.93%
J	0.73%	ASSOCIATES	1.92%
PROJECTS	0.63%	BUSINESS	1.87%
TRADING	0.63%	CONSTRUCTION	1.80%
HOUSE	0.52%	CONSULTANTS	1.76%
D	0.52%	MEDIA	1.69%
DESIGN	0.52%	ENGINEERING	1.61%
MEDICAL	0.52%	LONDON	1.60%
GREEN	0.52%	CARE	1.45%
FOR	0.52%	J	1.45%
(SALISBURY)	0.52%	GLOBAL	1.44%
SYSTEMS	0.52%	INVESTMENTS	1.43%
PUBLISHING	0.42%	IT	1.41%
INVESTMENTS	0.42%	PROPERTIES	1.36%
SOUTH	0.42%	BUILDING	1.34%
HOME	0.42%	M	1.30%
MAINTENANCE	0.42%	ELECTRICAL	1.28%
TO	0.42%	S	1.24%
PRODUCTIONS	0.42%	INTERNATIONAL	1.23%
ASSOCIATES	0.42%	SYSTEMS	1.23%

Previous 36 months, excluding companies less than 12 months old

SIC CODE	NUMBER OF COMPANIES	UK COMPANIES
None Supplied	208	202,798
7487 - Other business activities	91	60,968
82990 - Other business support service activities not elsewhere classified	40	30,253
70229 - Management consultancy activities other than financial management	36	16,150
9999 - Dormant Company	26	19,765
98000 - Residents property management	25	3,154
99999 - Dormant Company	19	18,336
62020 - Information technology consultancy activities	18	10,246
7414 - Business & management consultancy	17	12,916
96090 - Other service activities not elsewhere classified	16	10,085
62090 - Other information technology service activities	13	6,996
7499 - Non-trading company	12	11,316
74909 - Other professional, scientific and technical activities not elsewhere classified	12	7,788
7260 - Other computer related activities	12	7,789
5530 - Restaurants	11	4,898
74990 - Non-trading company	11	8,695
9305 - Other service activities	9	8,740
93199 - Other sports activities	8	1,558
43999 - Other specialised construction activities not elsewhere classified	8	3,097
41100 - Development of building projects	8	3,921