

Sheffield

q1 2012 business confidence report



headlines

- Q1 2012 saw a new record in company registrations in Sheffield when compared to any previous Q1.
- Q1 2012 was a record quarter for company registrations in Sheffield when compared to any quarter in history.
- February 2012 saw a new record in company registrations in Sheffield when compared to any previous February.
- January 2012 saw a new record in company registrations in Sheffield when compared to any previous January.

contents

new company registrations

closed companies (dissolved)

net company growth

uk company share

director age

director gender

naming trends

sic data

Quarterly Data (Q1 Jan-Mar 2012)

Q1 2012 saw a new record in company registrations in Sheffield when compared to any previous Q1.

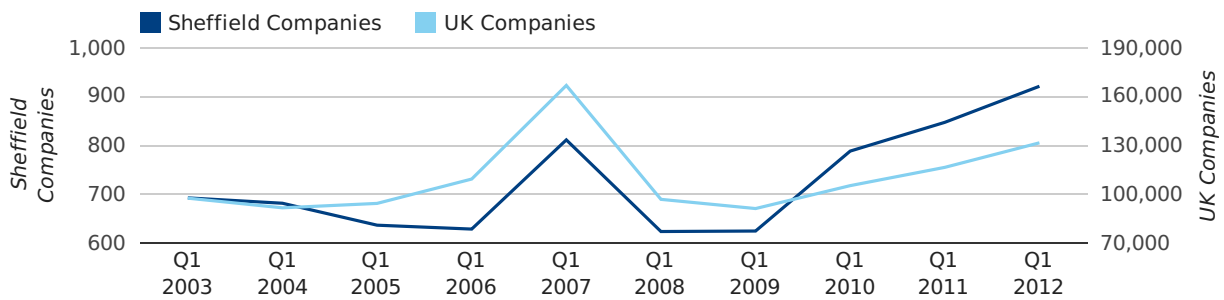
Q1 2012 was a record quarter for company registrations in Sheffield when compared to any quarter in history.

A total of 921 companies were registered in Sheffield during the first quarter of 2012 (Jan 2012 - Mar 2012).

This figure is an increase of 8.7% versus the same period last year (Q1 2011). This figure compares equally to the UK as a whole, which saw an increase of 13.0% against the same period last year.

FIRST QUARTER (JAN 2012 - MAR 2012)	SHEFFIELD	UK
2012	921	131,491
2011	847	116,391
% CHANGE	8.7%	13.0%
RECORD YEAR	2012 (921)	2007 (166,814)

new companies by quarter

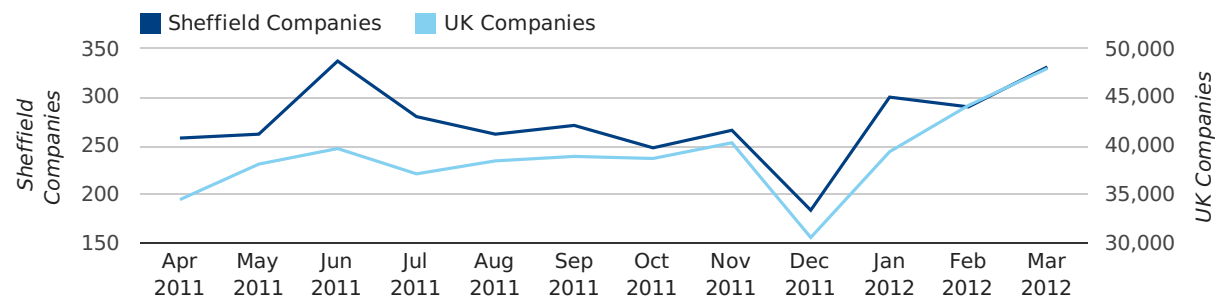


Monthly Data (Jan, Feb & Mar 2012)

February 2012 saw a new record in company registrations in Sheffield when compared to any previous February.

January 2012 saw a new record in company registrations in Sheffield when compared to any previous January.

new companies by month



	JANUARY	FEBRUARY	MARCH
NEW COMPANIES IN 2012	300	290	331
NEW COMPANIES IN 2011	247	262	338
% CHANGE	21.5%	10.7%	-2.1%
RECORD YEAR	2012 (300)	2012 (290)	2007 (355)

Quarterly Data (Q1 Jan-Mar 2012)

A total of 538 companies were dissolved in Sheffield during the first quarter of 2012 (Jan 2012 - Mar 2012).

This figure is a decrease of 18.2% versus the same period last year (Q1 2011). This figure compares poorly to the UK as a whole, which saw a decrease of 25.7% against the same period last year.

FIRST QUARTER (JAN 2012 - MAR 2012)	SHEFFIELD	UK
2012	538	67,576
2011	658	90,986
% CHANGE	-18.2%	-25.7%
RECORD YEAR	2011 (658)	2009 (108,060)

dissolved companies by quarter



Monthly Data (Jan, Feb & Mar 2012)

dissolved companies by month



	JANUARY	FEBRUARY	MARCH
CLOSED COMPANIES IN 2012	195	161	182
CLOSED COMPANIES IN 2011	262	199	197
% CHANGE	-25.6%	-19.1%	-8%
RECORD YEAR	2011 (262)	2011 (199)	2009 (360)

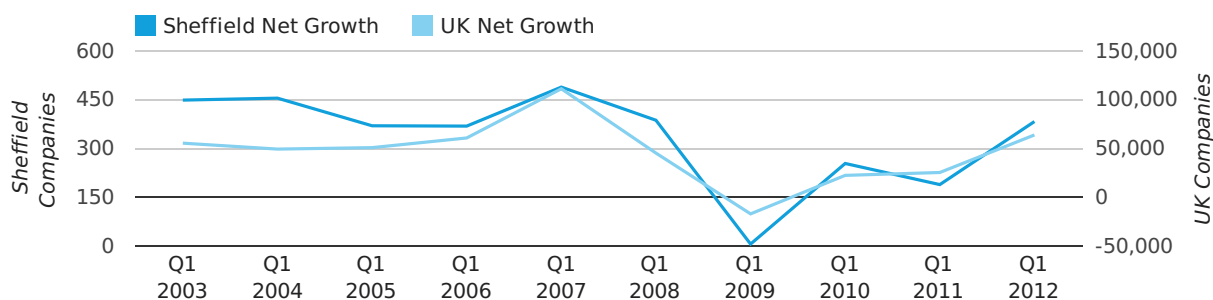
Quarterly Data (Q1 Jan-Mar 2012)

Net company growth for Sheffield during the first quarter of 2012 (Jan 2012 - Mar 2012) was 383 companies.

This represents an increase of 102.6% on the same period last year.

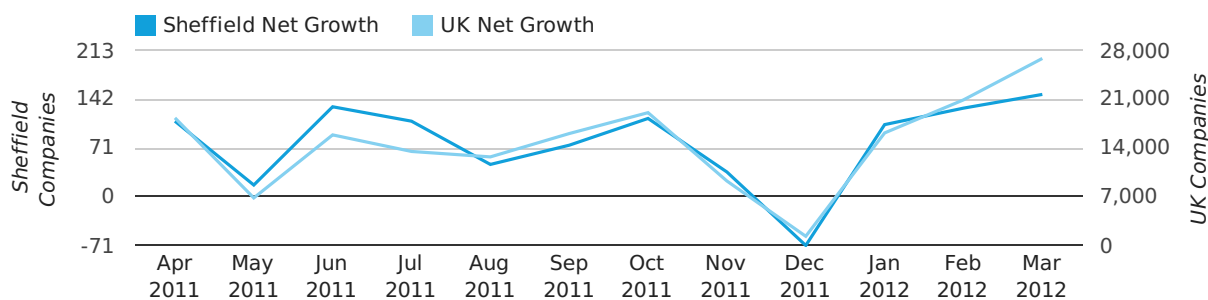
FIRST QUARTER (JAN 2012 - MAR 2012)	SHEFFIELD	UK
2012	383	63,915
2011	189	25,405
% CHANGE	102.6%	151.6%
RECORD YEAR	2007 (489)	2007 (111,282)

net growth by quarter



Monthly Data (Jan, Feb & Mar 2012)

net growth by month



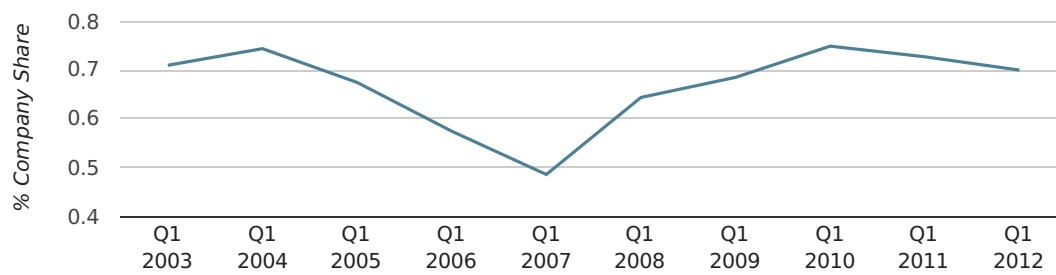
	JANUARY	FEBRUARY	MARCH
NET GROWTH IN 2012	105	129	149
NET GROWTH IN 2011	-15	63	141
% CHANGE	-800.0%	104.8%	5.7%
RECORD YEAR	2003 (129)	2004 (180)	2000 (250)

Quarterly Data (Q1 Jan-Mar 2012)

In the first quarter of 2012, Sheffield formed 0.7% of all UK companies.

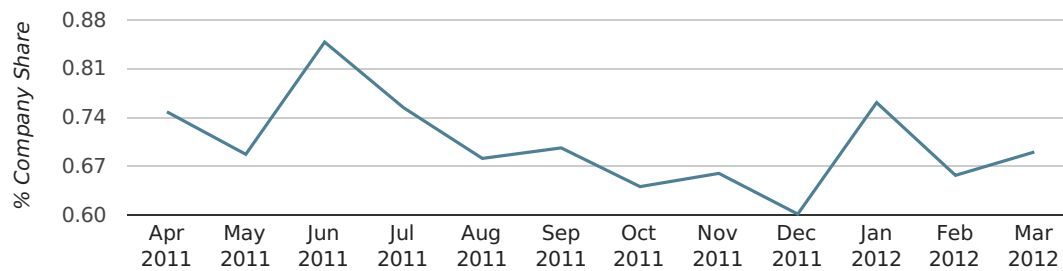
FIRST QUARTER (JAN 2012 - MAR 2012)	SHEFFIELD
2012	0.7%
2011	0.7%
2010	0.7%
2009	0.7%
2008	0.6%
RECORD YEAR (SINCE 1960)	1969 (1.4%)

company share by quarter



Monthly Data (Jan, Feb & Mar 2012)

company share by month



	JANUARY	FEBRUARY	MARCH
UK FORMATION SHARE IN 2012	0.8%	0.7%	0.7%
UK FORMATION SHARE IN 2011	0.7%	0.7%	0.8%
% CHANGE	4.1%	-5.3%	-8.4%
RECORD YEAR	1969 (1.8%)	1977 (1.6%)	1977 (1.4%)

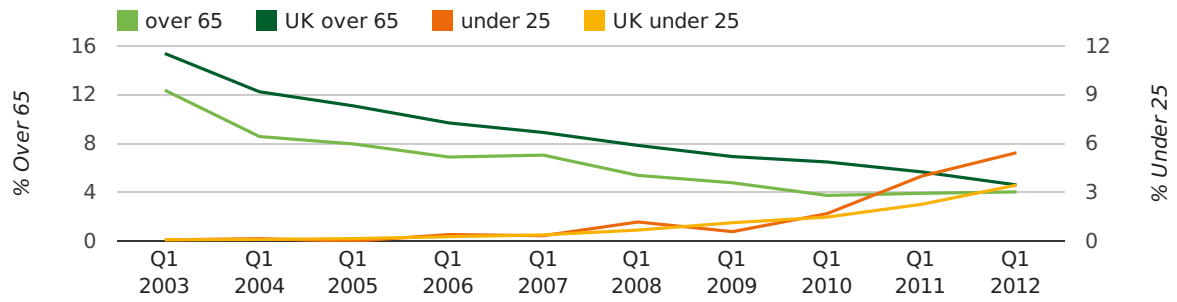
Quarterly Data (Q1 Jan-Mar 2012)

The average age of a director in the first quarter of 2012 was 42.7.

The percentage of directors under the age of 25 was 5.4% compared to the UK figure of 4.6%.

The percentage of directors over the age of 65 was 4.0% compared to the UK figure of 3.5%.

director age by quarter

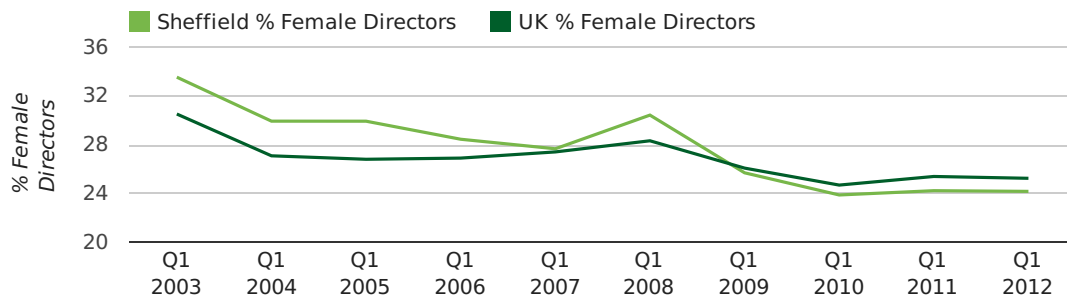


Quarterly Data (Q1 Jan-Mar 2012)

The record first quarter for female directors in Sheffield was in 1861 when 40.0% of all directors were female.

24.2% of all director appointments in Sheffield in the first quarter of 2012 were female. This compares to a UK average of 25.3% for the same period.

director gender by quarter



Previous 12 months (Mar 2011-Mar 2012)

Excluding: LIMITED, LTD, &, UK, SERVICES, THE, (UK), AND, LTD., A, LLP, SOLUTIONS, COMPANY, OF.

WORD	PERCENTAGE	UK WORD	UK PERCENTAGE
MANAGEMENT	1.37%	CONSULTING	5.07%
SOLAR	1.35%	MANAGEMENT	4.74%
MY	1.30%	CONSULTANCY	3.30%
CONSULTANCY	1.02%	PROPERTY	2.37%
FREE	1.00%	TRADING	2.07%
YORKSHIRE	0.93%	DESIGN	1.93%
RTM	0.93%	ENGINEERING	1.86%
PROPERTY	0.88%	ASSOCIATES	1.84%
CO.,	0.86%	CONSULTANTS	1.79%
ENERGY	0.84%	BUSINESS	1.73%
CONSULTING	0.84%	MEDIA	1.72%
CONSULTANTS	0.70%	CONSTRUCTION	1.72%
TRADING	0.67%	LONDON	1.66%
DESIGN	0.65%	J	1.54%
MEDIA	0.65%	INVESTMENTS	1.51%
ENTERPRISES	0.65%	GLOBAL	1.50%
BUSINESS	0.63%	IT	1.40%
RENEWABLE	0.60%	CARE	1.34%
CONSTRUCTION	0.60%	PROPERTIES	1.31%
GLOBAL	0.56%	ELECTRICAL	1.27%
ENGINEERING	0.56%	M	1.27%
SHEFFIELD	0.56%	BUILDING	1.24%
BUILDING	0.54%	ENERGY	1.20%
J	0.54%	S	1.20%
ELECTRICAL	0.54%	ENTERPRISES	1.19%

Previous 36 months, excluding companies less than 12 months old

SIC CODE	NUMBER OF COMPANIES	UK COMPANIES
None Supplied	1,443	216,665
7487 - Other business activities	317	52,735
82990 - Other business support service activities not elsewhere classified	221	35,233
99999 - Dormant Company	187	25,084
9999 - Dormant Company	125	18,617
70229 - Management consultancy activities other than financial management	95	19,704
7414 - Business & management consultancy	74	12,113
74990 - Non-trading company	73	9,729
96090 - Other service activities not elsewhere classified	71	13,637
62020 - Information technology consultancy activities	65	14,303
62090 - Other information technology service activities	62	8,145
7260 - Other computer related activities	45	7,154
74909 - Other professional, scientific and technical activities not elsewhere classified	44	9,892
9305 - Other service activities	43	8,818
9302 - Hairdressing & other beauty treatment	43	1,435
86220 - Specialists medical practice activities	43	1,845
43210 - Electrical installation	42	3,573
7222 - Other software consultancy and supply	41	6,934
86900 - Other human health activities	39	5,066
41100 - Development of building projects	38	4,984