

Shrewsbury

q3 2011 business confidence report



headlines

- August 2011 saw a new record in company registrations in Shrewsbury when compared to any previous August.
- August 2011 saw a new record in net growth in Shrewsbury when compared to any previous August.

contents

new company registrations

closed companies (dissolved)

net company growth

uk company share

director age

director gender

naming trends

sic data

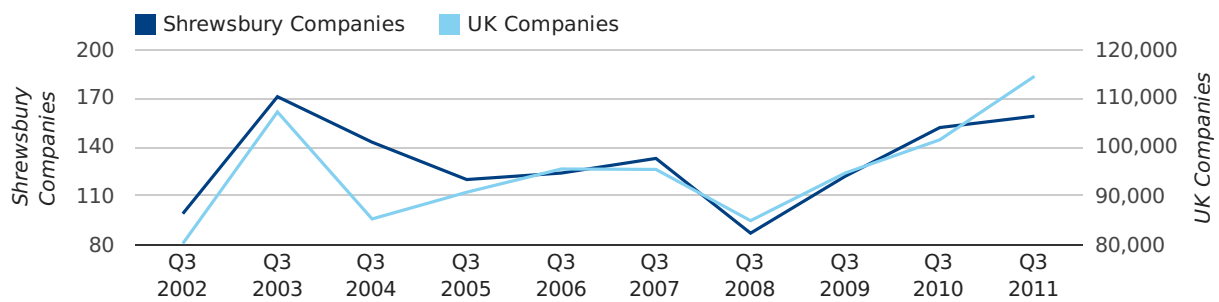
Quarterly Data (Q3 Jul-Sep 2011)

A total of 159 companies were registered in Shrewsbury during the third quarter of 2011 (Jul 2011 - Sep 2011).

This figure is an increase of 4.6% versus the same period last year (Q3 2010). This figure compares badly to the UK as a whole, which saw an increase of 12.8% against the same period last year.

THIRD QUARTER (JUL 2011 - SEP 2011)	SHREWSBURY	UK
2011	159	114,512
2010	152	101,492
% CHANGE	4.6%	12.8%
RECORD YEAR	2003 (171)	2011 (114,512)

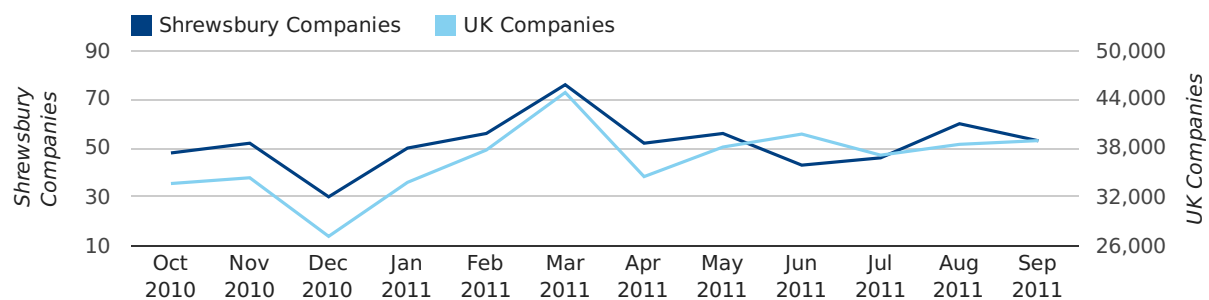
new companies by quarter



Monthly Data (Jul, Aug & Sep 2011)

August 2011 saw a new record in company registrations in Shrewsbury when compared to any previous August.

new companies by month



	JULY	AUGUST	SEPTEMBER
NEW COMPANIES IN 2011	46	60	53
NEW COMPANIES IN 2010	42	46	64
% CHANGE	9.5%	30.4%	-17.2%
RECORD YEAR	2004 (63)	2011 (60)	2003 (72)

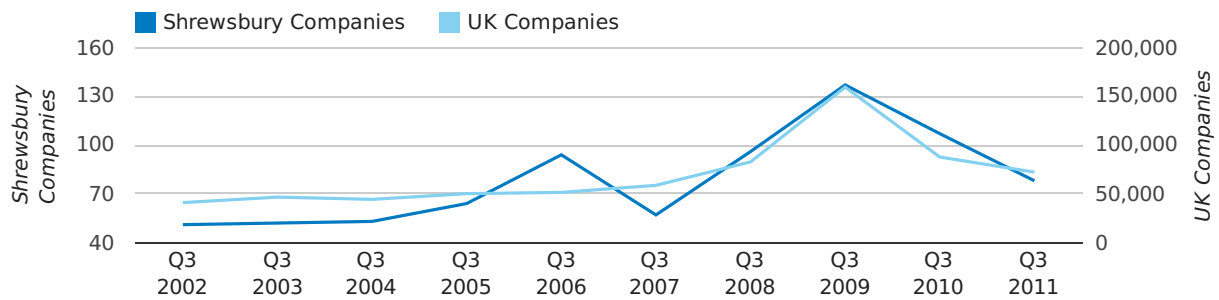
Quarterly Data (Q3 Jul-Sep 2011)

A total of 78 companies were dissolved in Shrewsbury during the third quarter of 2011 (Jul 2011 - Sep 2011).

This figure is a decrease of 27.1% versus the same period last year (Q3 2010). This figure compares well to the UK as a whole, which saw a decrease of 17.6% against the same period last year.

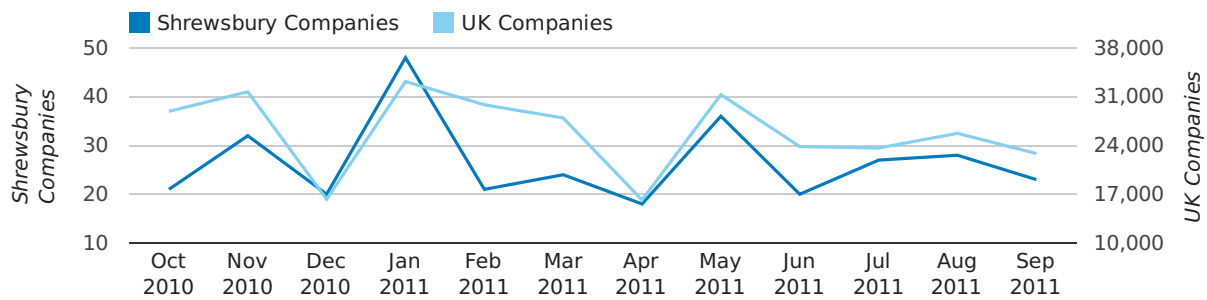
THIRD QUARTER (JUL 2011 - SEP 2011)	SHREWSBURY	UK
2011	78	72,230
2010	107	87,705
% CHANGE	-27.1%	-17.6%
RECORD YEAR	2009 (137)	2009 (159,401)

dissolved companies by quarter



Monthly Data (Jul, Aug & Sep 2011)

dissolved companies by month



	JULY	AUGUST	SEPTEMBER
CLOSED COMPANIES IN 2011	27	28	23
CLOSED COMPANIES IN 2010	33	41	33
% CHANGE	-18.2%	-31.7%	-30%
RECORD YEAR	2010 (33)	2008 (66)	2009 (70)

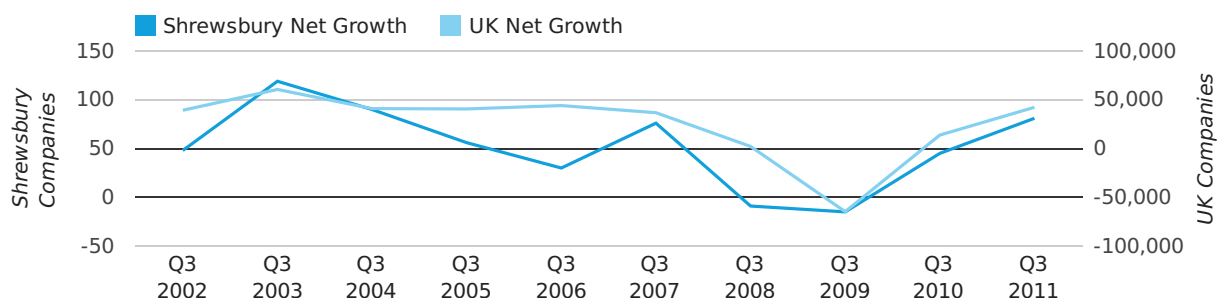
Quarterly Data (Q3 Jul-Sep 2011)

Net company growth for Shrewsbury during the third quarter of 2011 (Jul 2011 - Sep 2011) was 81 companies.

This represents an increase of 80.0% on the same period last year.

THIRD QUARTER (JUL 2011 - SEP 2011)	SHREWSBURY	UK
2011	81	42,282
2010	45	13,787
% CHANGE	80.0%	206.7%
RECORD YEAR	2003 (119)	2003 (60,597)

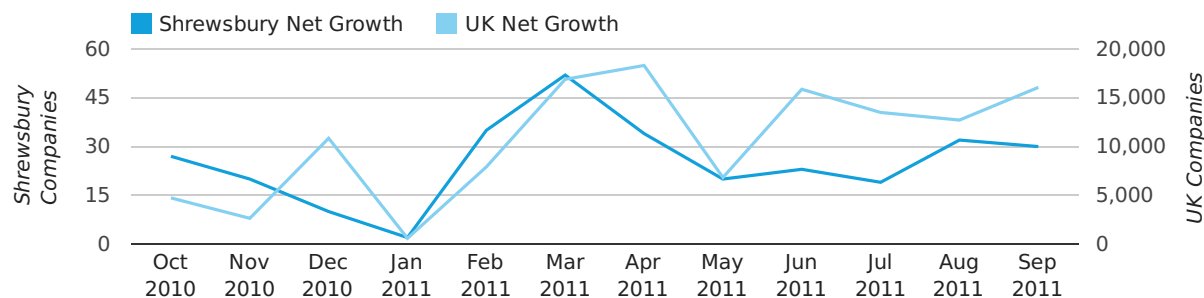
net growth by quarter



Monthly Data (Jul, Aug & Sep 2011)

August 2011 saw a new record in net growth in Shrewsbury when compared to any previous August.

net growth by month



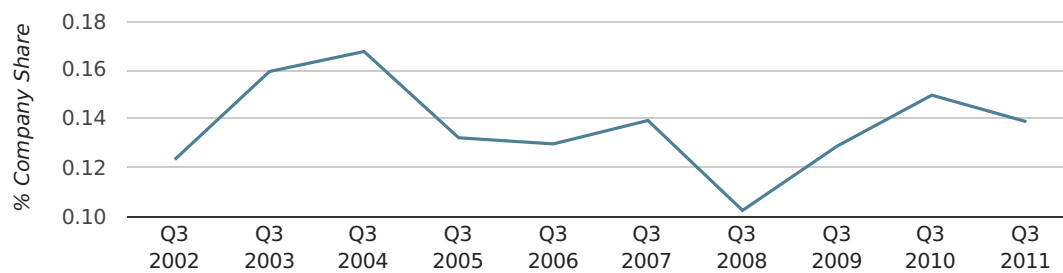
	JULY	AUGUST	SEPTEMBER
NET GROWTH IN 2011	19	32	30
NET GROWTH IN 2010	9	5	31
% CHANGE	111.1%	540.0%	-3.2%
RECORD YEAR	2004 (49)	2011 (32)	2003 (53)

Quarterly Data (Q3 Jul-Sep 2011)

In the third quarter of 2011, Shrewsbury formed 0.1% of all UK companies.

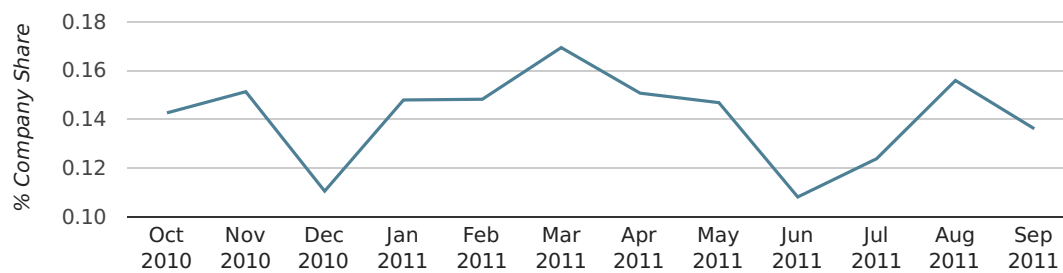
THIRD QUARTER (JUL 2011 - SEP 2011)	SHREWSBURY
2011	0.1%
2010	0.1%
2009	0.1%
2008	0.1%
2007	0.1%
RECORD YEAR (SINCE 1960)	1968 (0.3%)

company share by quarter



Monthly Data (Jul, Aug & Sep 2011)

company share by month



	JULY	AUGUST	SEPTEMBER
UK FORMATION SHARE IN 2011	0.1%	0.2%	0.1%
UK FORMATION SHARE IN 2010	0.1%	0.1%	0.2%
% CHANGE	0.2%	9.8%	-25.2%
RECORD YEAR	1966 (0.5%)	1968 (0.5%)	1967 (0.4%)

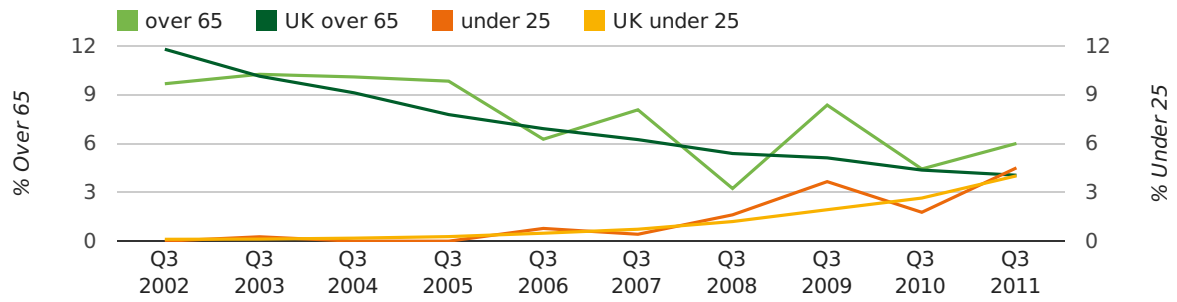
Quarterly Data (Q3 Jul-Sep 2011)

The average age of a director in the third quarter of 2011 was 45.5.

The percentage of directors under the age of 25 was 4.5% compared to the UK figure of 4.0%.

The percentage of directors over the age of 65 was 6.0% compared to the UK figure of 4.1%.

director age by quarter

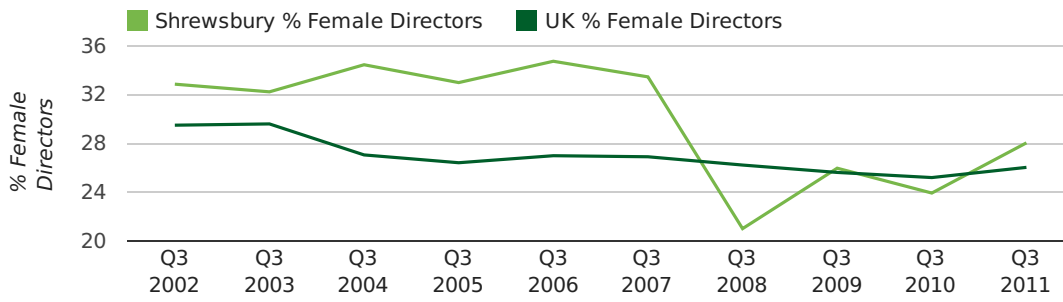


Quarterly Data (Q3 Jul-Sep 2011)

The record third quarter for female directors in Shrewsbury was in 1862 when 50.0% of all directors were female.

28.0% of all director appointments in Shrewsbury in the third quarter of 2011 were female. This compares to a UK average of 26.0% for the same period.

director gender by quarter



Previous 12 months (Sep 2010-Sep 2011)

Excluding: LIMITED, LTD, &, UK, SERVICES, THE, (UK), AND, LTD., A, LLP, SOLUTIONS, COMPANY, OF.

WORD	PERCENTAGE	UK WORD	UK PERCENTAGE
MANAGEMENT	2.00%	CONSULTING	5.11%
SHROPSHIRE	1.53%	MANAGEMENT	4.75%
CONSULTING	1.24%	CONSULTANCY	3.19%
J	1.24%	PROPERTY	2.41%
SHREWSBURY	1.24%	TRADING	2.06%
PROPERTY	1.05%	DESIGN	1.94%
DESIGN	1.05%	ASSOCIATES	1.85%
R	0.67%	BUSINESS	1.82%
S	0.67%	CONSULTANTS	1.76%
MEDIA	0.67%	ENGINEERING	1.74%
CONSULTANCY	0.67%	MEDIA	1.72%
C	0.57%	CONSTRUCTION	1.72%
EDUCATION	0.57%	LONDON	1.63%
BUILDING	0.57%	J	1.47%
CIC	0.57%	GLOBAL	1.46%
ASSOCIATES	0.57%	INVESTMENTS	1.43%
SOCIAL	0.57%	CARE	1.42%
(SHREWSBURY)	0.57%	IT	1.38%
ENTERPRISE	0.57%	BUILDING	1.30%
SOFTWARE	0.48%	PROPERTIES	1.28%
LEISURE	0.48%	ELECTRICAL	1.27%
CO	0.48%	M	1.25%
FOR	0.48%	ENERGY	1.22%
PROJECT	0.48%	TRAINING	1.21%
E	0.48%	S	1.21%

Previous 36 months, excluding companies less than 12 months old

SIC CODE	NUMBER OF COMPANIES	UK COMPANIES
None Supplied	197	204,493
7487 - Other business activities	49	65,177
82990 - Other business support service activities not elsewhere classified	37	29,245
9999 - Dormant Company	35	22,587
70229 - Management consultancy activities other than financial management	34	15,760
7414 - Business & management consultancy	33	14,755
7260 - Other computer related activities	30	8,686
99999 - Dormant Company	27	18,281
62090 - Other information technology service activities	24	6,798
74990 - Non-trading company	22	8,064
7499 - Non-trading company	21	11,543
74909 - Other professional, scientific and technical activities not elsewhere classified	16	7,551
98000 - Residents property management	13	2,664
43390 - Other building completion and finishing	11	2,545
4521 - General construction & civil engineering	11	6,321
5530 - Restaurants	9	5,640
70100 - Activities of head offices	9	2,479
96090 - Other service activities not elsewhere classified	9	10,018
7415 - Holding companies including head offices	8	1,904
41100 - Development of building projects	8	3,697