

Southampton

2011 half year business confidence report



headlines

- Q2 2011 saw a new record in company registrations in Southampton when compared to any previous Q2.
- June 2011 saw a new record in company registrations in Southampton when compared to any previous June.
- May 2011 saw a new record in company registrations in Southampton when compared to any previous May.

contents

new company registrations

closed companies (dissolved)

net company growth

uk company share

director age

director gender

naming trends

sic data

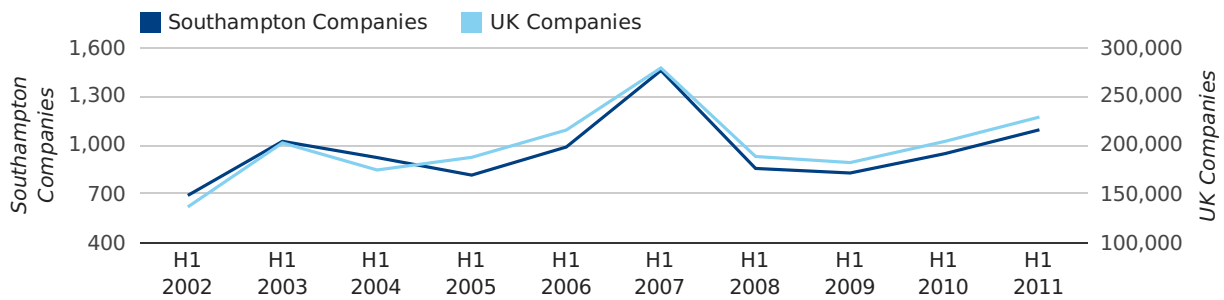
Half Year Data (Jan-Jun 2011)

In the first half of 2011 a total of 1,094 companies were formed in Southampton. This figure is 15.5% higher than last year, which compares well to the UK wide figure of 12.3%.

The highest total for a first half year in Southampton occurred in 2007 when a total of 1,459 were formed.

HALF YEAR (JAN-JUN)	SOUTHAMPTON	UK
2011	1,094	228,735
2010	947	203,749
% CHANGE	15.5%	12.3%
RECORD YEAR	2007 (1,459)	2007 (279,097)

new companies by half year



Quarterly Data (Q2 Apr-Jun 2011)

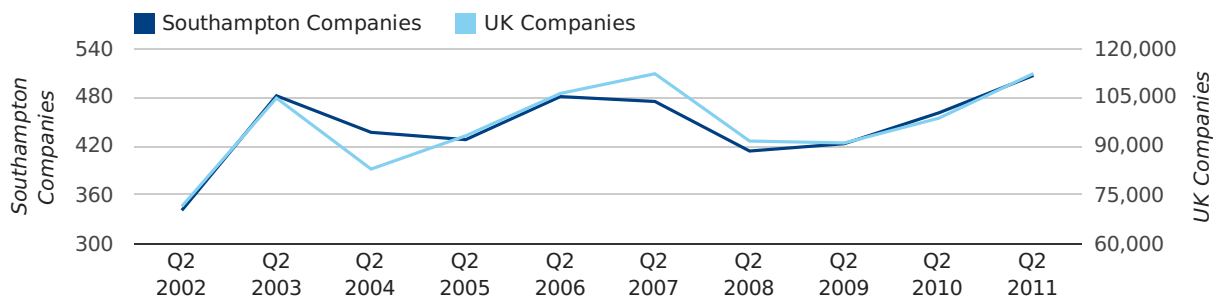
Q2 2011 saw a new record in company registrations in Southampton when compared to any previous Q2.

A total of 507 companies were registered in Southampton during the second quarter of 2011 (Apr 2011 - Jun 2011).

This figure is an increase of 10.0% versus the same period last year (Q2 2010). This figure compares equally to the UK as a whole, which saw an increase of 13.9% against the same period last year.

SECOND QUARTER (APR 2011 - JUN 2011)	SOUTHAMPTON	UK
2011	507	112,344
2010	461	98,612
% CHANGE	10.0%	13.9%
RECORD YEAR	2011 (507)	2011 (112,344)

new companies by quarter

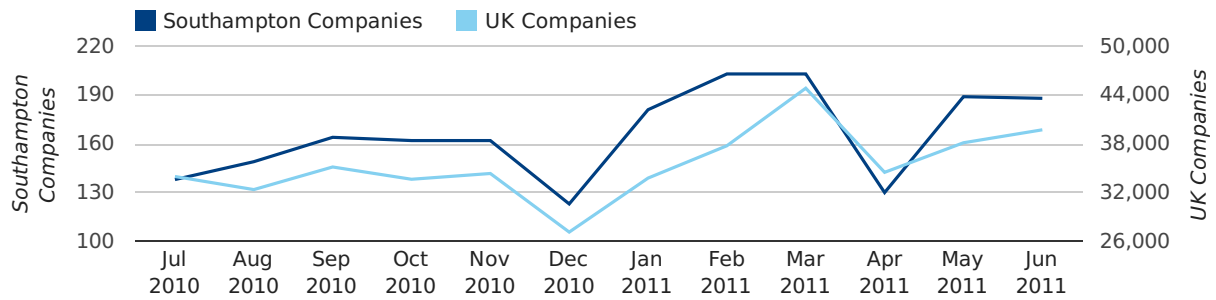


Monthly Data (Apr, May & Jun 2011)

June 2011 saw a new record in company registrations in Southampton when compared to any previous June.

May 2011 saw a new record in company registrations in Southampton when compared to any previous May.

new companies by month



	APRIL	MAY	JUNE
NEW COMPANIES IN 2011	130	189	188
NEW COMPANIES IN 2010	160	134	167
% CHANGE	-18.8%	41.0%	12.6%
RECORD YEAR	2003 (179)	2011 (189)	2011 (188)

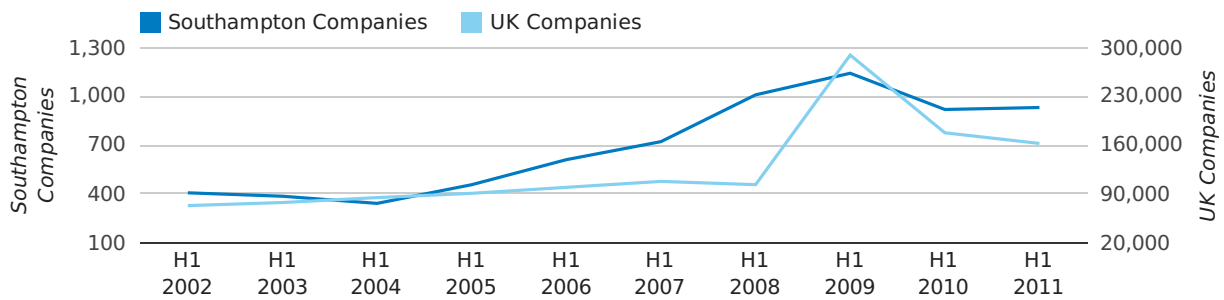
Half Year Data (Jan-Jun 2011)

In the first half of 2011 a total of 931 companies were dissolved in Southampton. This figure is 1.3% higher than last year, which compares badly to the UK wide change of -8.6%.

The highest total for a first half year in Southampton occurred in 2009 when a total of 1,142 were closed.

HALF YEAR (JAN-JUN)	SOUTHAMPTON	UK
2011	931	162,310
2010	919	177,631
% CHANGE	1.3%	-8.6%
RECORD YEAR	2009 (1,142)	2009 (289,236)

dissolved companies by half year



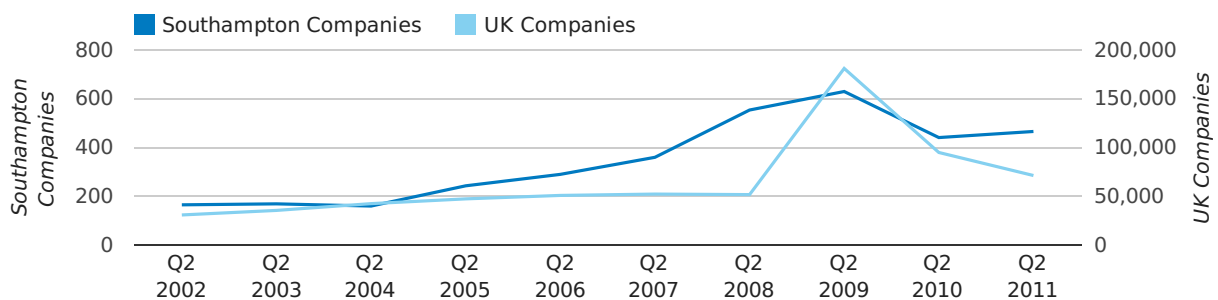
Quarterly Data (Q2 Apr-Jun 2011)

A total of 466 companies were dissolved in Southampton during the second quarter of 2011 (Apr 2011 - Jun 2011).

This figure is an increase of 5.7% versus the same period last year (Q2 2010). This figure compares poorly to the UK as a whole, which saw a decrease of 24.9% against the same period last year.

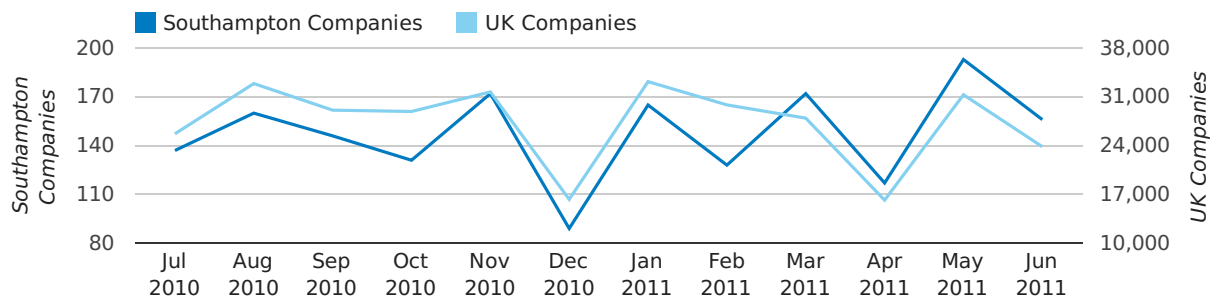
SECOND QUARTER (APR 2011 - JUN 2011)	SOUTHAMPTON	UK
2011	466	71,324
2010	441	94,954
% CHANGE	5.7%	-24.9%
RECORD YEAR	2009 (630)	2009 (181,176)

dissolved companies by quarter



Monthly Data (Apr, May & Jun 2011)

dissolved companies by month



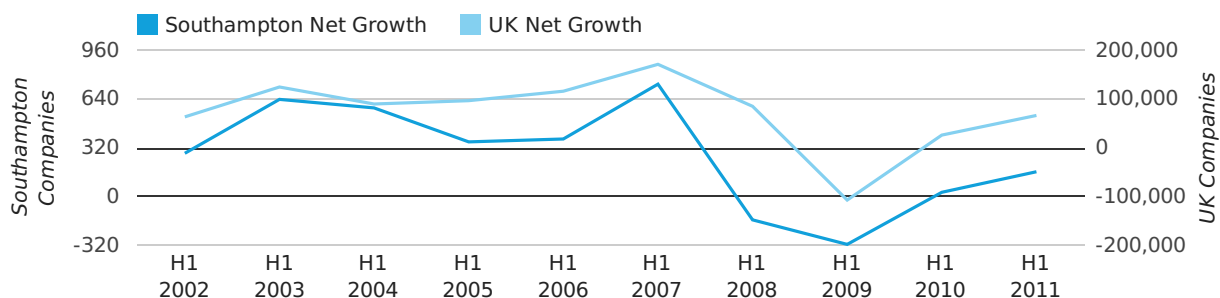
	APRIL	MAY	JUNE
CLOSED COMPANIES IN 2011	117	193	156
CLOSED COMPANIES IN 2010	126	160	155
% CHANGE	-7.1%	20.6%	1%
RECORD YEAR	2008 (403)	2009 (288)	2009 (171)

Half Year Data (Jan-Jun 2011)

In the first half of 2011 the company register for Southampton increased by 163 companies. This figure is 482.1% higher than last year, which compares well to a UK increase of 154.3%.

HALF YEAR (JAN-JUN)	SOUTHAMPTON	UK
2011	163	66,425
2010	28	26,118
% CHANGE	482.1%	154.3%
RECORD YEAR	2007 (738)	2007 (171,296)

net growth by half year



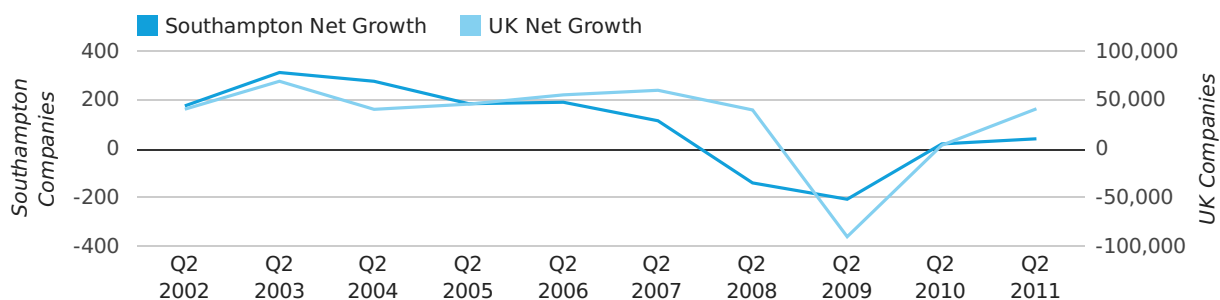
Quarterly Data (Q2 Apr-Jun 2011)

Net company growth for Southampton during the second quarter of 2011 (Apr 2011 - Jun 2011) was 41 companies.

This represents an increase of 105.0% on the same period last year.

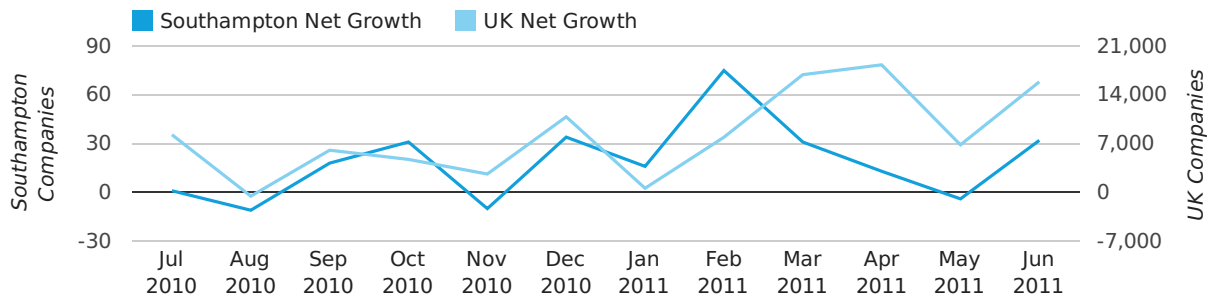
SECOND QUARTER (APR 2011 - JUN 2011)	SOUTHAMPTON	UK
2011	41	41,020
2010	20	3,658
% CHANGE	105.0%	1,021.4%
RECORD YEAR	2003 (313)	2003 (69,274)

net growth by quarter



Monthly Data (Apr, May & Jun 2011)

net growth by month



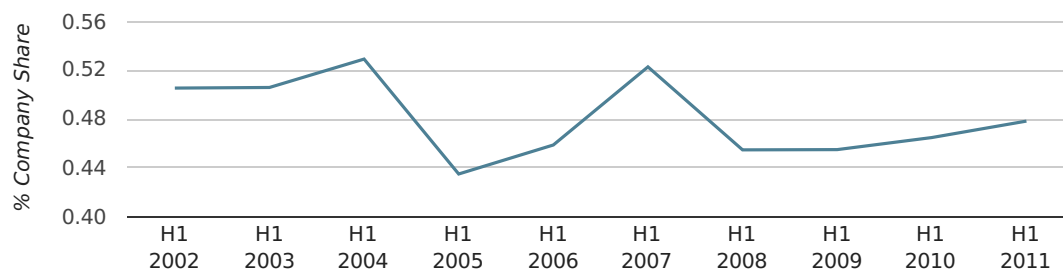
	APRIL	MAY	JUNE
NET GROWTH IN 2011	13	-4	32
NET GROWTH IN 2010	34	-26	12
% CHANGE	-61.8%	-84.6%	166.7%
RECORD YEAR	1997 (150)	2003 (100)	2008 (105)

Half Year Data (Jan-Jun 2011)

In the first half of 2011 Southampton formed 0.5% of all UK companies. This is the same as the 2010 figure of 0.5%.

HALF YEAR (JAN-JUN)	SOUTHAMPTON
2011	0.5%
2010	0.5%
2009	0.5%
2008	0.5%
2007	0.5%
RECORD YEAR (SINCE 1960)	1963 (0.9%)

company share by half year

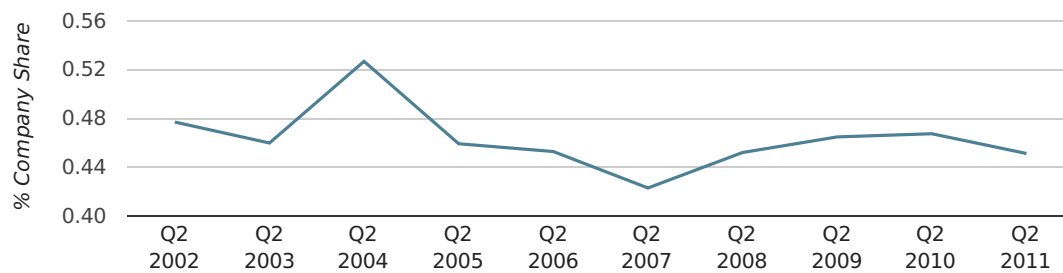


Quarterly Data (Q2 Apr-Jun 2011)

In the second quarter of 2011, Southampton formed 0.5% of all UK companies.

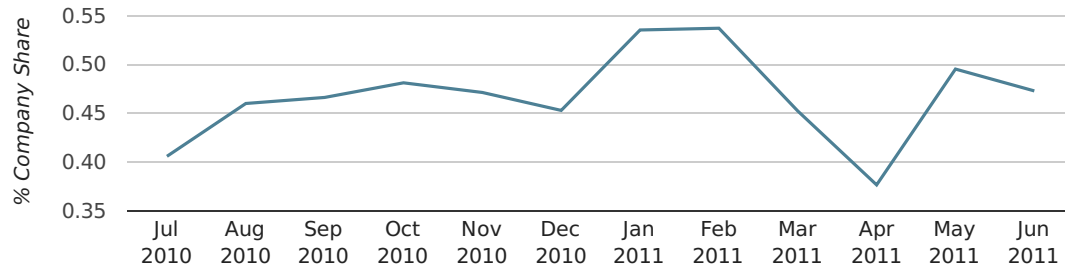
SECOND QUARTER (APR 2011 - JUN 2011)	SOUTHAMPTON
2011	0.5%
2010	0.5%
2009	0.5%
2008	0.5%
2007	0.4%
RECORD YEAR (SINCE 1960)	1964 (1.0%)

company share by quarter



Monthly Data (Apr, May & Jun 2011)

company share by month



	APRIL	MAY	JUNE
UK FORMATION SHARE IN 2011	0.4%	0.5%	0.5%
UK FORMATION SHARE IN 2010	0.5%	0.4%	0.5%
% CHANGE	-21.4%	11.1%	-0.3%
RECORD YEAR	1970 (1.5%)	1964 (1.8%)	1963 (1.2%)

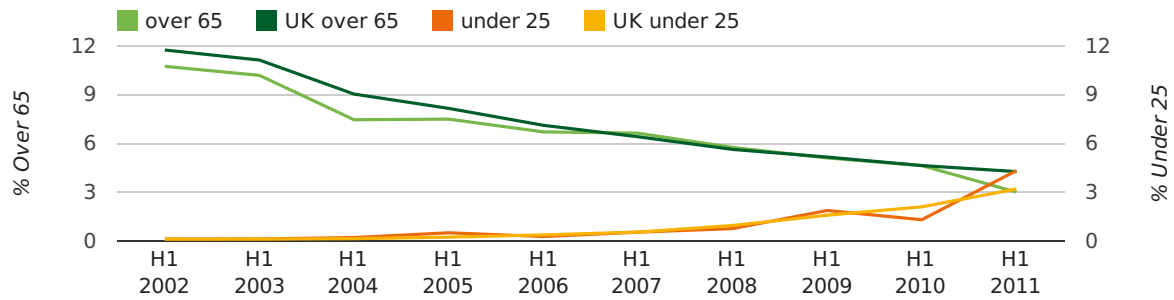
Half Year Data (Jan-Jun 2011)

The average age of a director in the first half of 2011 was 42.8.

The percentage of directors under the age of 25 was 4.3% compared to the UK figure of 3.2%.

The percentage of directors over the age of 65 was 3.0% compared to the UK figure of 4.3%.

director age by half year



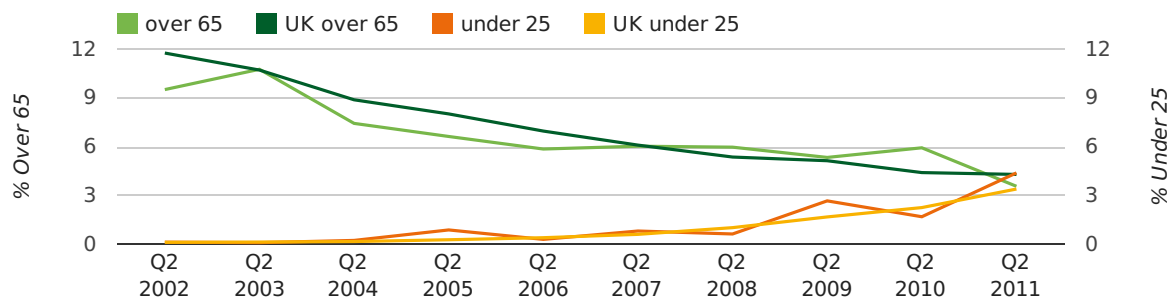
Quarterly Data (Q2 Apr-Jun 2011)

The average age of a director in the second quarter of 2011 was 42.4.

The percentage of directors under the age of 25 was 4.4% compared to the UK figure of 3.4%.

The percentage of directors over the age of 65 was 3.6% compared to the UK figure of 4.3%.

director age by quarter

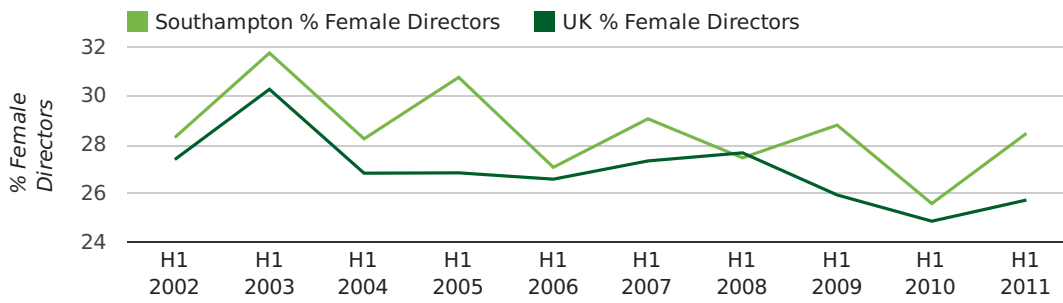


Half Year Data (Jan-Jun 2011)

The record first half year for female directors in Southampton was 1861 when 40.0% of all directors were female.

28.5% of all director appointments in Southampton in the first half of 2011 were female. This compares to a UK average of 25.7% for the same period.

director gender by half year

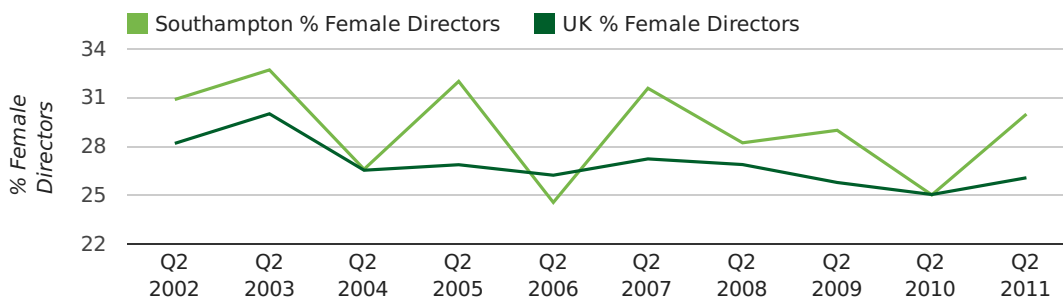


Quarterly Data (Q2 Apr-Jun 2011)

The record second quarter for female directors in Southampton was in 1866 when 66.7% of all directors were female.

30.0% of all director appointments in Southampton in the second quarter of 2011 were female. This compares to a UK average of 26.1% for the same period.

director gender by quarter



Previous 12 months (Jun 2010-Jun 2011)

Excluding: LIMITED, LTD, &, UK, SERVICES, THE, (UK), AND, LTD., A, LLP, SOLUTIONS, COMPANY, OF.

WORD	PERCENTAGE	UK WORD	UK PERCENTAGE
CONSULTING	2.14%	CONSULTING	5.09%
MANAGEMENT	1.38%	MANAGEMENT	4.86%
CONSULTANCY	1.12%	CONSULTANCY	3.17%
ELECTRICAL	1.05%	PROPERTY	2.43%
J	0.91%	TRADING	2.05%
SOLENT	0.83%	DESIGN	1.94%
SOUTHAMPTON	0.80%	ASSOCIATES	1.92%
BUSINESS	0.76%	BUSINESS	1.87%
IT	0.73%	CONSTRUCTION	1.77%
SOUTHERN	0.73%	CONSULTANTS	1.76%
ENGINEERING	0.69%	MEDIA	1.73%
PROPERTY	0.69%	ENGINEERING	1.67%
TRAINING	0.65%	LONDON	1.60%
DESIGN	0.62%	GLOBAL	1.46%
ASSOCIATES	0.62%	J	1.44%
MARINE	0.58%	CARE	1.44%
NEW	0.58%	INVESTMENTS	1.42%
R	0.58%	IT	1.39%
S	0.54%	BUILDING	1.32%
TRADING	0.54%	PROPERTIES	1.31%
CARE	0.54%	ELECTRICAL	1.30%
CLEANING	0.51%	M	1.27%
M	0.51%	S	1.23%
CONSTRUCTION	0.51%	ENTERPRISES	1.20%
HOME	0.51%	SYSTEMS	1.20%

Previous 36 months, excluding companies less than 12 months old

SIC CODE	NUMBER OF COMPANIES	UK COMPANIES
None Supplied	869	202,072
7487 - Other business activities	254	60,758
82990 - Other business support service activities not elsewhere classified	115	30,647
9999 - Dormant Company	73	20,111
70229 - Management consultancy activities other than financial management	69	16,419
7414 - Business & management consultancy	56	13,053
96090 - Other service activities not elsewhere classified	54	10,322
99999 - Dormant Company	53	18,918
62090 - Other information technology service activities	47	7,095
9305 - Other service activities	46	9,063
74909 - Other professional, scientific and technical activities not elsewhere classified	46	7,835
7222 - Other software consultancy and supply	41	7,143
62020 - Information technology consultancy activities	41	10,545
7260 - Other computer related activities	40	7,849
7499 - Non-trading company	40	10,955
74990 - Non-trading company	39	8,481
43210 - Electrical installation	35	3,085
4521 - General construction & civil engineering	31	5,928
5530 - Restaurants	27	5,086
86900 - Other human health activities	27	4,154