

Stanmore

q3 2011 business confidence report



contents

new company registrations

closed companies (dissolved)

net company growth

uk company share

director age

director gender

naming trends

sic data

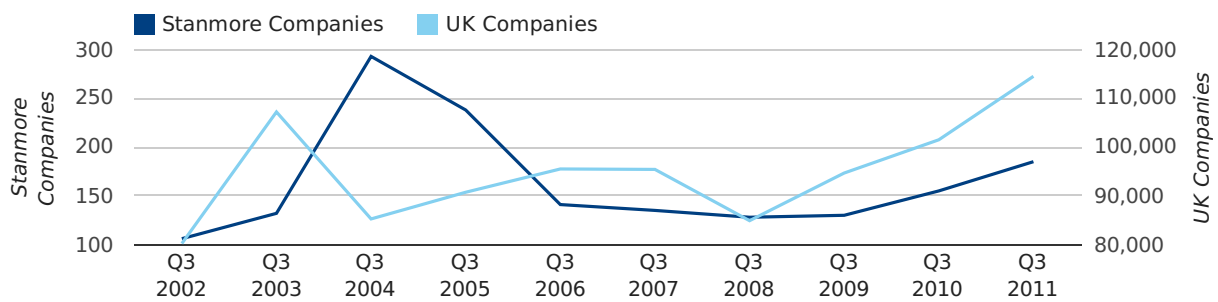
Quarterly Data (Q3 Jul-Sep 2011)

A total of 185 companies were registered in Stanmore during the third quarter of 2011 (Jul 2011 - Sep 2011).

This figure is an increase of 19.4% versus the same period last year (Q3 2010). This figure compares well to the UK as a whole, which saw an increase of 12.8% against the same period last year.

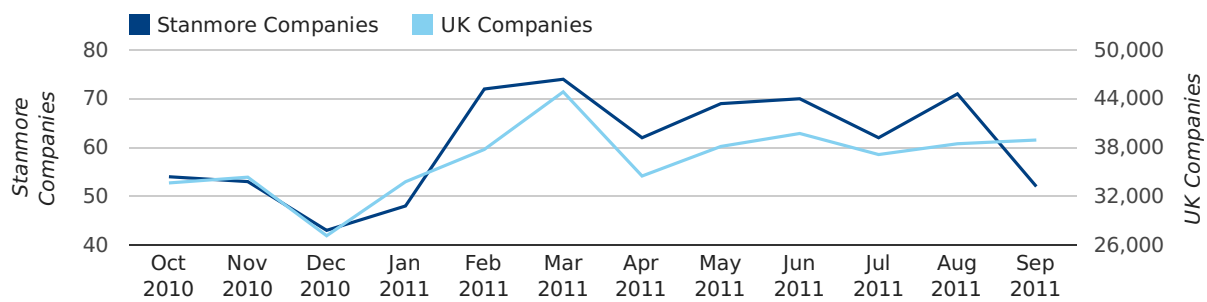
THIRD QUARTER (JUL 2011 - SEP 2011)	STANMORE	UK
2011	185	114,512
2010	155	101,492
% CHANGE	19.4%	12.8%
RECORD YEAR	2004 (293)	2011 (114,512)

new companies by quarter



Monthly Data (Jul, Aug & Sep 2011)

new companies by month



	JULY	AUGUST	SEPTEMBER
NEW COMPANIES IN 2011	62	71	52
NEW COMPANIES IN 2010	49	58	48
% CHANGE	26.5%	22.4%	8.3%
RECORD YEAR	2005 (89)	2005 (106)	2004 (221)

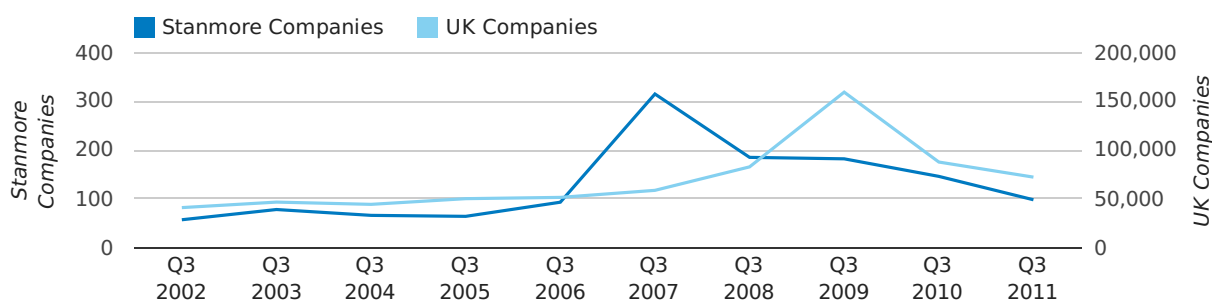
Quarterly Data (Q3 Jul-Sep 2011)

A total of 98 companies were dissolved in Stanmore during the third quarter of 2011 (Jul 2011 - Sep 2011).

This figure is a decrease of 32.9% versus the same period last year (Q3 2010). This figure compares well to the UK as a whole, which saw a decrease of 17.6% against the same period last year.

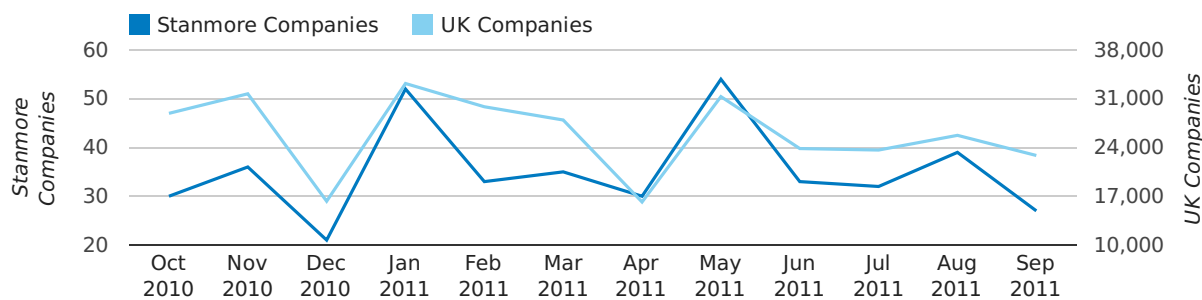
THIRD QUARTER (JUL 2011 - SEP 2011)	STANMORE	UK
2011	98	72,230
2010	146	87,705
% CHANGE	-32.9%	-17.6%
RECORD YEAR	2007 (315)	2009 (159,401)

dissolved companies by quarter



Monthly Data (Jul, Aug & Sep 2011)

dissolved companies by month



	JULY	AUGUST	SEPTEMBER
CLOSED COMPANIES IN 2011	32	39	27
CLOSED COMPANIES IN 2010	35	54	57
% CHANGE	-8.6%	-27.8%	-53%
RECORD YEAR	2007 (64)	2007 (190)	2009 (97)

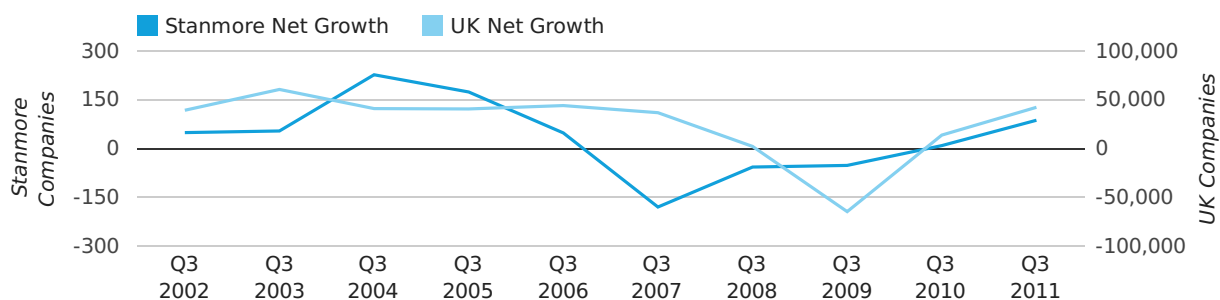
Quarterly Data (Q3 Jul-Sep 2011)

Net company growth for Stanmore during the third quarter of 2011 (Jul 2011 - Sep 2011) was 87 companies.

This represents an increase of 866.7% on the same period last year.

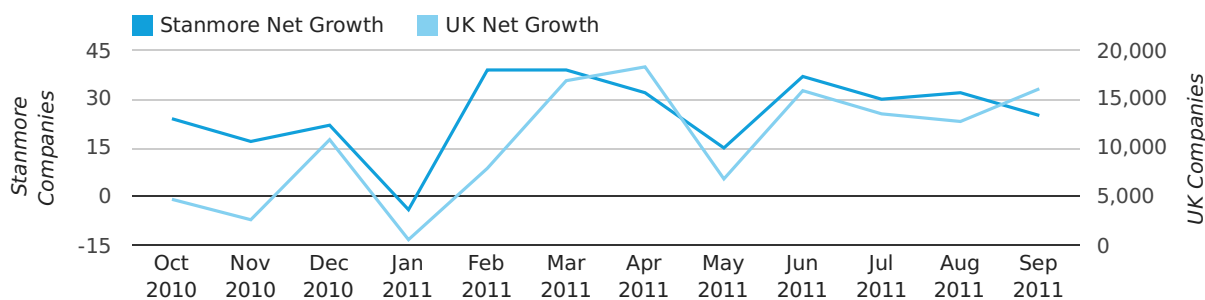
THIRD QUARTER (JUL 2011 - SEP 2011)	STANMORE	UK
2011	87	42,282
2010	9	13,787
% CHANGE	866.7%	206.7%
RECORD YEAR	2004 (227)	2003 (60,597)

net growth by quarter



Monthly Data (Jul, Aug & Sep 2011)

net growth by month



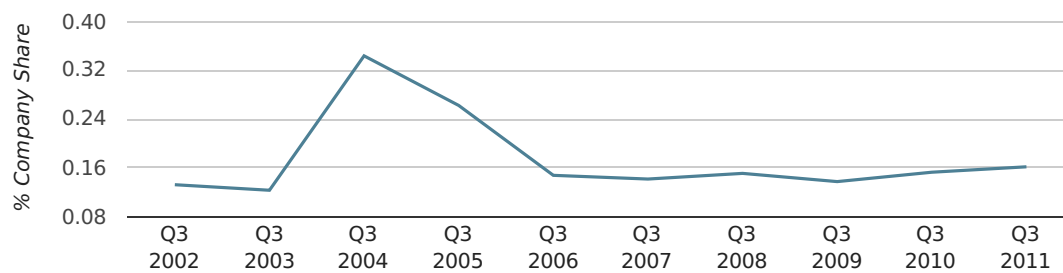
	JULY	AUGUST	SEPTEMBER
NET GROWTH IN 2011	30	32	25
NET GROWTH IN 2010	14	4	-9
% CHANGE	114.3%	700.0%	-377.8%
RECORD YEAR	2005 (68)	2005 (82)	2004 (208)

Quarterly Data (Q3 Jul-Sep 2011)

In the third quarter of 2011, Stanmore formed 0.2% of all UK companies.

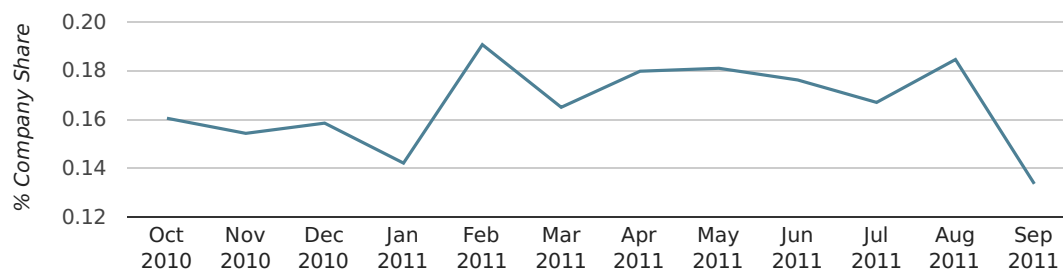
THIRD QUARTER (JUL 2011 - SEP 2011)	STANMORE
2011	0.2%
2010	0.2%
2009	0.1%
2008	0.2%
2007	0.1%
RECORD YEAR (SINCE 1960)	1960 (0.6%)

company share by quarter



Monthly Data (Jul, Aug & Sep 2011)

company share by month



	JULY	AUGUST	SEPTEMBER
UK FORMATION SHARE IN 2011	0.2%	0.2%	0.1%
UK FORMATION SHARE IN 2010	0.1%	0.2%	0.1%
% CHANGE	15.8%	3.0%	-2.2%
RECORD YEAR	1964 (0.6%)	2005 (0.4%)	1960 (1.1%)

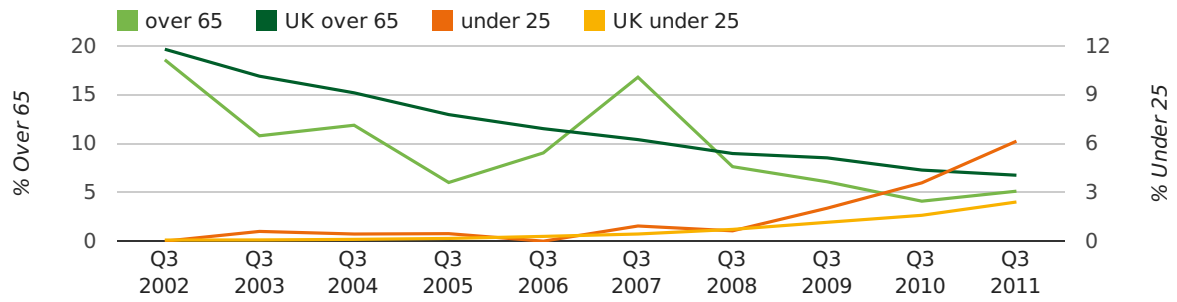
Quarterly Data (Q3 Jul-Sep 2011)

The average age of a director in the third quarter of 2011 was 41.4.

The percentage of directors under the age of 25 was 6.2% compared to the UK figure of 4.0%.

The percentage of directors over the age of 65 was 5.1% compared to the UK figure of 4.1%.

director age by quarter

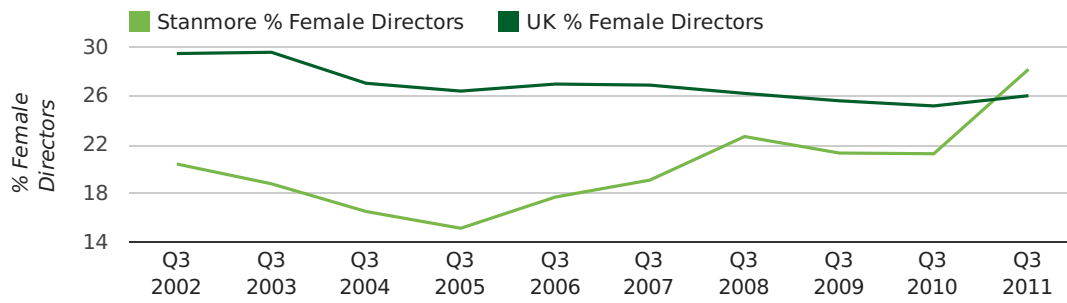


Quarterly Data (Q3 Jul-Sep 2011)

The record third quarter for female directors in Stanmore was in 1862 when 50.0% of all directors were female.

28.2% of all director appointments in Stanmore in the third quarter of 2011 were female. This compares to a UK average of 26.0% for the same period.

director gender by quarter



Previous 12 months (Sep 2010-Sep 2011)

Excluding: LIMITED, LTD, &, UK, SERVICES, THE, (UK), AND, LTD., A, LLP, SOLUTIONS, COMPANY, OF.

WORD	PERCENTAGE	UK WORD	UK PERCENTAGE
CONSULTING	1.58%	CONSULTING	5.11%
CONSULTANCY	1.24%	MANAGEMENT	4.75%
MANAGEMENT	1.08%	CONSULTANCY	3.19%
IT	1.00%	PROPERTY	2.41%
CONSULTANTS	0.83%	TRADING	2.06%
PROPERTY	0.83%	DESIGN	1.94%
TRADING	0.75%	ASSOCIATES	1.85%
INVESTMENTS	0.75%	BUSINESS	1.82%
LONDON	0.75%	CONSULTANTS	1.76%
DESIGN	0.66%	ENGINEERING	1.74%
RESTAURANT	0.66%	MEDIA	1.72%
DEVELOPMENTS	0.66%	CONSTRUCTION	1.72%
CAPITAL	0.66%	LONDON	1.63%
ASSOCIATES	0.58%	J	1.47%
BUILDING	0.50%	GLOBAL	1.46%
(0.50%	INVESTMENTS	1.43%
J	0.50%	CARE	1.42%
K	0.50%	IT	1.38%
)	0.50%	BUILDING	1.30%
PRODUCTIONS	0.41%	PROPERTIES	1.28%
PROJECTS	0.41%	ELECTRICAL	1.27%
GLOBAL	0.41%	M	1.25%
S	0.41%	ENERGY	1.22%
ONE	0.41%	TRAINING	1.21%
SPICE	0.33%	S	1.21%

Previous 36 months, excluding companies less than 12 months old

SIC CODE	NUMBER OF COMPANIES	UK COMPANIES
None Supplied	267	204,493
7487 - Other business activities	89	65,177
99999 - Dormant Company	40	18,281
82990 - Other business support service activities not elsewhere classified	38	29,245
62020 - Information technology consultancy activities	34	10,137
9999 - Dormant Company	34	22,587
9305 - Other service activities	24	10,525
70229 - Management consultancy activities other than financial management	24	15,760
7414 - Business & management consultancy	24	14,755
7260 - Other computer related activities	22	8,686
4521 - General construction & civil engineering	16	6,321
62090 - Other information technology service activities	16	6,798
96090 - Other service activities not elsewhere classified	16	10,018
86900 - Other human health activities	14	4,019
7222 - Other software consultancy and supply	14	8,345
7499 - Non-trading company	14	11,543
43999 - Other specialised construction activities not elsewhere classified	12	2,917
69201 - Accounting and auditing activities	11	3,271
59113 - Television programme production activities	10	798
5530 - Restaurants	10	5,640