

Stevenage

q3 2011 business confidence report



contents

new company registrations

closed companies (dissolved)

net company growth

uk company share

director age

director gender

naming trends

sic data

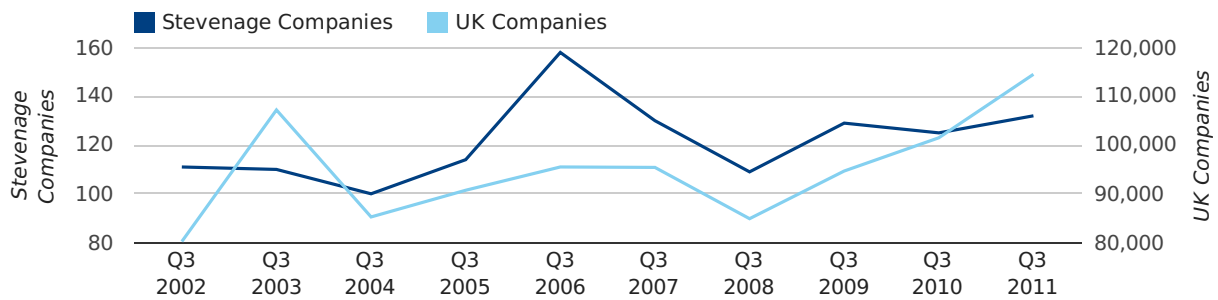
Quarterly Data (Q3 Jul-Sep 2011)

A total of 132 companies were registered in Stevenage during the third quarter of 2011 (Jul 2011 - Sep 2011).

This figure is an increase of 5.6% versus the same period last year (Q3 2010). This figure compares equally to the UK as a whole, which saw an increase of 12.8% against the same period last year.

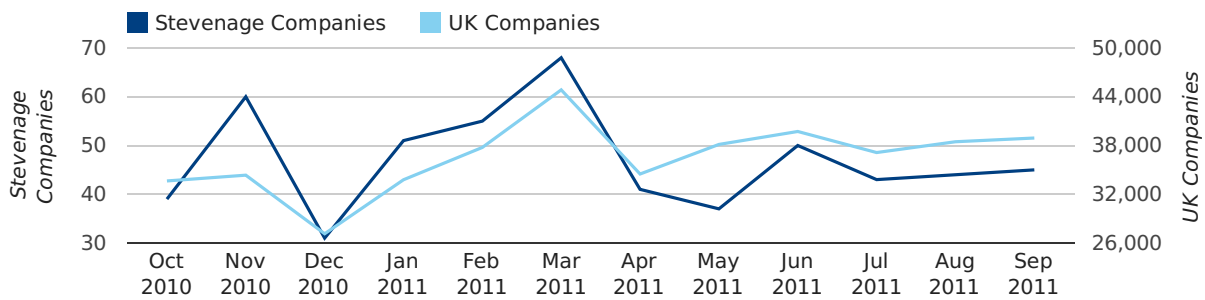
THIRD QUARTER (JUL 2011 - SEP 2011)	STEVENAGE	UK
2011	132	114,512
2010	125	101,492
% CHANGE	5.6%	12.8%
RECORD YEAR	2006 (158)	2011 (114,512)

new companies by quarter



Monthly Data (Jul, Aug & Sep 2011)

new companies by month



	JULY	AUGUST	SEPTEMBER
NEW COMPANIES IN 2011	43	44	45
NEW COMPANIES IN 2010	38	36	51
% CHANGE	13.2%	22.2%	-11.8%
RECORD YEAR	2006 (45)	2007 (48)	2006 (68)

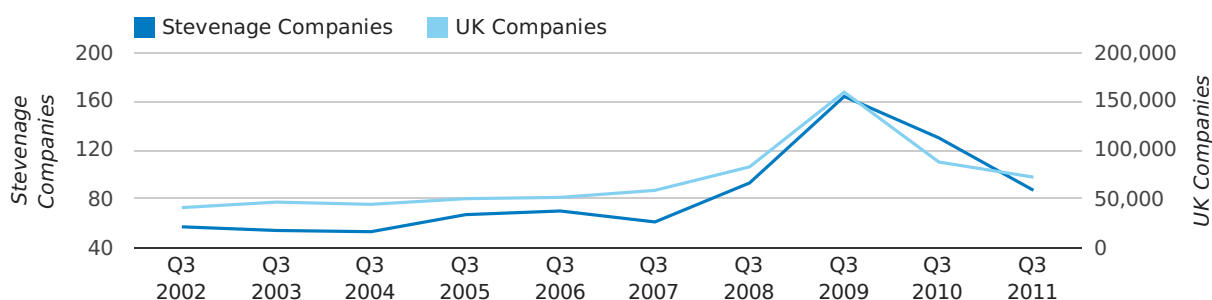
Quarterly Data (Q3 Jul-Sep 2011)

A total of 87 companies were dissolved in Stevenage during the third quarter of 2011 (Jul 2011 - Sep 2011).

This figure is a decrease of 33.1% versus the same period last year (Q3 2010). This figure compares well to the UK as a whole, which saw a decrease of 17.6% against the same period last year.

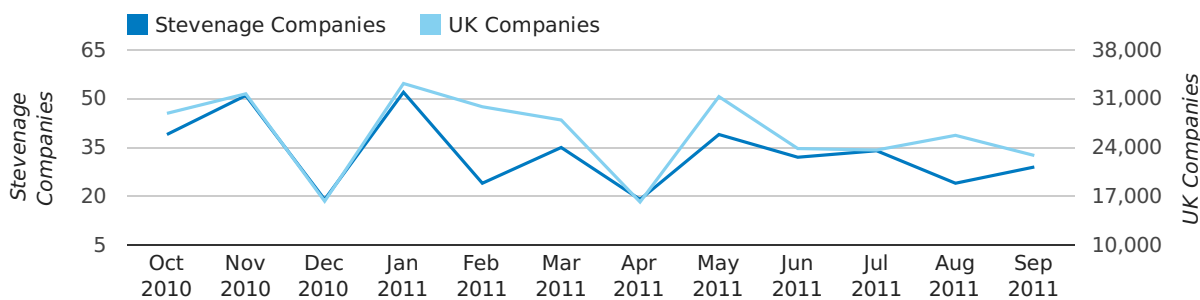
THIRD QUARTER (JUL 2011 - SEP 2011)	STEVENAGE	UK
2011	87	72,230
2010	130	87,705
% CHANGE	-33.1%	-17.6%
RECORD YEAR	2009 (164)	2009 (159,401)

dissolved companies by quarter



Monthly Data (Jul, Aug & Sep 2011)

dissolved companies by month



	JULY	AUGUST	SEPTEMBER
CLOSED COMPANIES IN 2011	34	24	29
CLOSED COMPANIES IN 2010	41	51	38
% CHANGE	-17.1%	-52.9%	-24%
RECORD YEAR	2010 (41)	2008 (71)	2009 (79)

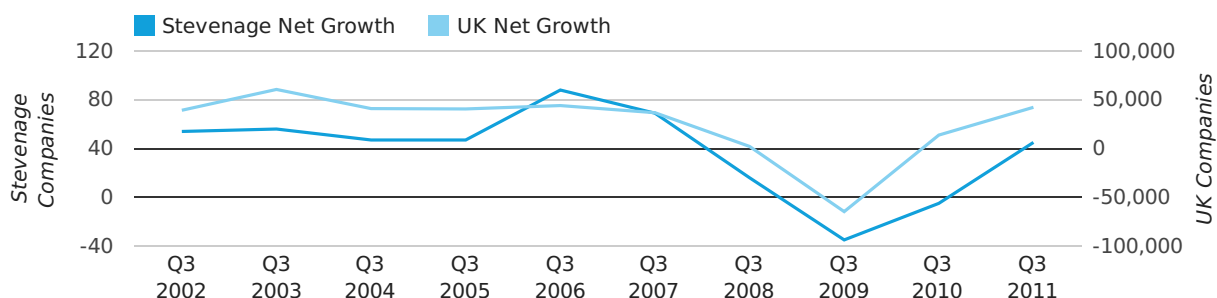
Quarterly Data (Q3 Jul-Sep 2011)

Net company growth for Stevenage during the third quarter of 2011 (Jul 2011 - Sep 2011) was 45 companies.

This represents an increase of 1,000.0% on the same period last year.

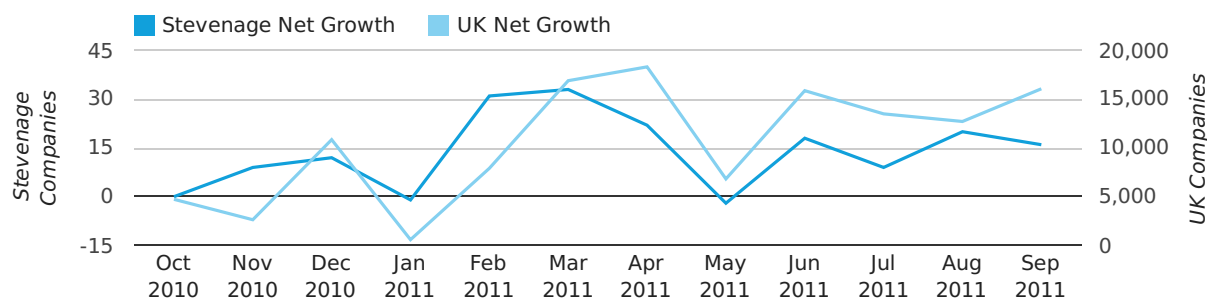
THIRD QUARTER (JUL 2011 - SEP 2011)	STEVENAGE	UK
2011	45	42,282
2010	-5	13,787
% CHANGE	-1,000.0%	206.7%
RECORD YEAR	2006 (88)	2003 (60,597)

net growth by quarter



Monthly Data (Jul, Aug & Sep 2011)

net growth by month



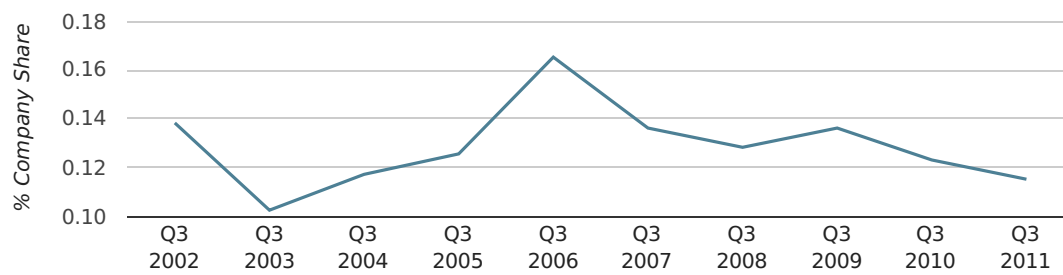
	JULY	AUGUST	SEPTEMBER
NET GROWTH IN 2011	9	20	16
NET GROWTH IN 2010	-3	-15	13
% CHANGE	-400.0%	-233.3%	23.1%
RECORD YEAR	2005 (29)	2007 (29)	2006 (44)

Quarterly Data (Q3 Jul-Sep 2011)

In the third quarter of 2011, Stevenage formed 0.1% of all UK companies.

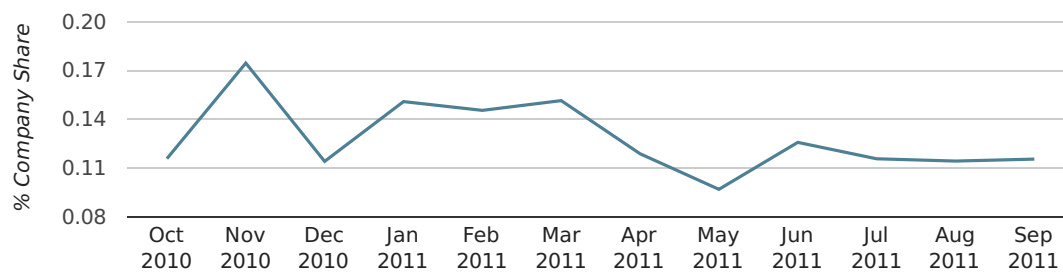
THIRD QUARTER (JUL 2011 - SEP 2011)	STEVENAGE
2011	0.1%
2010	0.1%
2009	0.1%
2008	0.1%
2007	0.1%
RECORD YEAR (SINCE 1960)	1976 (0.3%)

company share by quarter



Monthly Data (Jul, Aug & Sep 2011)

company share by month



	JULY	AUGUST	SEPTEMBER
UK FORMATION SHARE IN 2011	0.1%	0.1%	0.1%
UK FORMATION SHARE IN 2010	0.1%	0.1%	0.1%
% CHANGE	3.6%	2.9%	-20.3%
RECORD YEAR	1972 (0.4%)	1976 (0.3%)	1976 (0.4%)

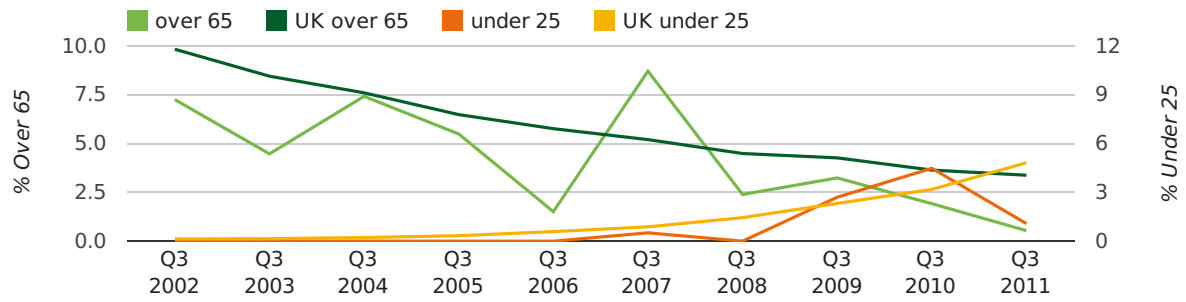
Quarterly Data (Q3 Jul-Sep 2011)

The average age of a director in the third quarter of 2011 was 42.7.

The percentage of directors under the age of 25 was 1.1% compared to the UK figure of 4.0%.

The percentage of directors over the age of 65 was 0.5% compared to the UK figure of 4.1%.

director age by quarter

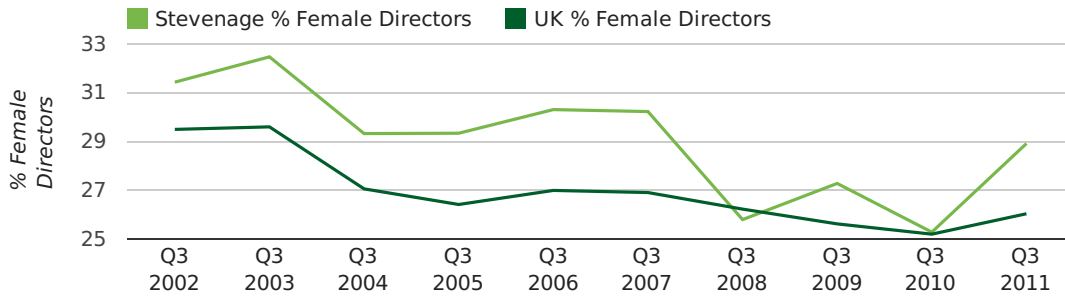


Quarterly Data (Q3 Jul-Sep 2011)

The record third quarter for female directors in Stevenage was in 1862 when 50.0% of all directors were female.

28.9% of all director appointments in Stevenage in the third quarter of 2011 were female. This compares to a UK average of 26.0% for the same period.

director gender by quarter



Previous 12 months (Sep 2010-Sep 2011)

Excluding: LIMITED, LTD, &, UK, SERVICES, THE, (UK), AND, LTD., A, LLP, SOLUTIONS, COMPANY, OF.

WORD	PERCENTAGE	UK WORD	UK PERCENTAGE
MANAGEMENT	2.80%	CONSULTING	5.11%
CONSULTING	1.55%	MANAGEMENT	4.75%
INVESTMENT	1.45%	CONSULTANCY	3.19%
BUSINESS	0.93%	PROPERTY	2.41%
ASSOCIATES	0.93%	TRADING	2.06%
PROPERTY	0.93%	DESIGN	1.94%
CONSULTANCY	0.83%	ASSOCIATES	1.85%
MEDIA	0.83%	BUSINESS	1.82%
CONSULTANTS	0.83%	CONSULTANTS	1.76%
STEVENAGE	0.83%	ENGINEERING	1.74%
M	0.72%	MEDIA	1.72%
HERTS	0.72%	CONSTRUCTION	1.72%
CLEANING	0.62%	LONDON	1.63%
IT	0.62%	J	1.47%
C	0.52%	GLOBAL	1.46%
TRAINING	0.52%	INVESTMENTS	1.43%
PRODUCTIONS	0.52%	CARE	1.42%
HEALTH	0.52%	IT	1.38%
BUILDING	0.52%	BUILDING	1.30%
ENTERPRISES	0.52%	PROPERTIES	1.28%
INTERNATIONAL	0.52%	ELECTRICAL	1.27%
CARE	0.52%	M	1.25%
PROJECT	0.52%	ENERGY	1.22%
MAINTENANCE	0.41%	TRAINING	1.21%
ELECTRICAL	0.41%	S	1.21%

Previous 36 months, excluding companies less than 12 months old

SIC CODE	NUMBER OF COMPANIES	UK COMPANIES
None Supplied	236	204,493
7487 - Other business activities	93	65,177
70229 - Management consultancy activities other than financial management	31	15,760
82990 - Other business support service activities not elsewhere classified	31	29,245
99999 - Dormant Company	25	18,281
9305 - Other service activities	23	10,525
62020 - Information technology consultancy activities	22	10,137
96090 - Other service activities not elsewhere classified	21	10,018
7260 - Other computer related activities	21	8,686
7414 - Business & management consultancy	21	14,755
9999 - Dormant Company	20	22,587
7499 - Non-trading company	19	11,543
74990 - Non-trading company	14	8,064
62090 - Other information technology service activities	14	6,798
74909 - Other professional, scientific and technical activities not elsewhere classified	14	7,551
4521 - General construction & civil engineering	13	6,321
7222 - Other software consultancy and supply	12	8,345
69201 - Accounting and auditing activities	9	3,271
41202 - Construction of domestic buildings	6	2,164
43290 - Other construction installation	6	1,374