

# Sutton Coldfield

q3 2011 business confidence report



## headlines

- August 2011 saw a new record in company registrations in Sutton Coldfield when compared to any previous August.

## contents

new company registrations

closed companies (dissolved)

net company growth

uk company share

director age

director gender

naming trends

sic data

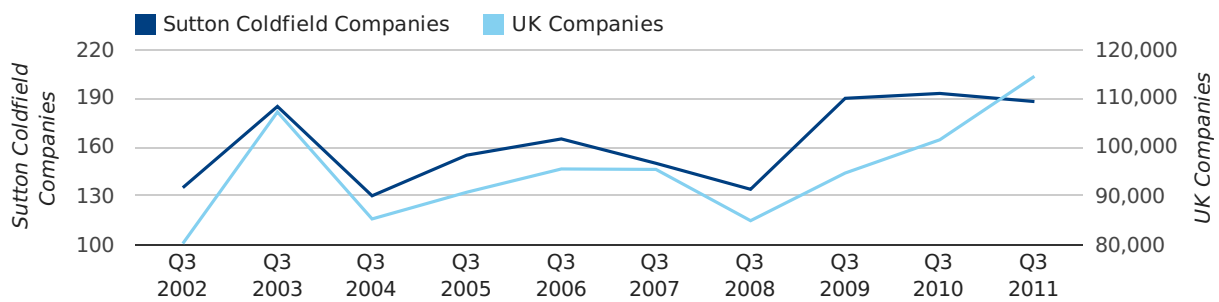
### Quarterly Data (Q3 Jul-Sep 2011)

A total of 188 companies were registered in Sutton Coldfield during the third quarter of 2011 (Jul 2011 - Sep 2011).

This figure is a decrease of 2.6% versus the same period last year (Q3 2010). This figure compares badly to the UK as a whole, which saw an increase of 12.8% against the same period last year.

THIRD QUARTER (JUL 2011 - SEP 2011)	SUTTON COLDFIELD	UK
2011	188	114,512
2010	193	101,492
% CHANGE	-2.6%	12.8%
RECORD YEAR	2010 (193)	2011 (114,512)

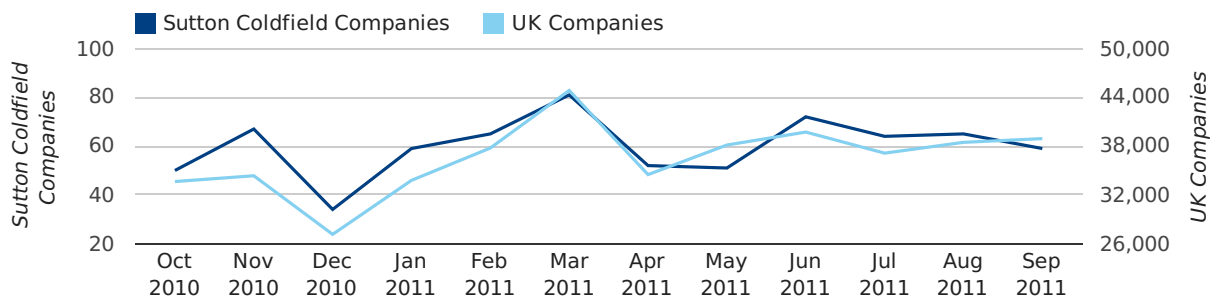
### new companies by quarter



### Monthly Data (Jul, Aug & Sep 2011)

August 2011 saw a new record in company registrations in Sutton Coldfield when compared to any previous August.

### new companies by month



	JULY	AUGUST	SEPTEMBER
NEW COMPANIES IN 2011	64	65	59
NEW COMPANIES IN 2010	60	65	68
% CHANGE	6.7%	0.0%	-13.2%
RECORD YEAR	2009 (67)	2010 (65)	2010 (68)

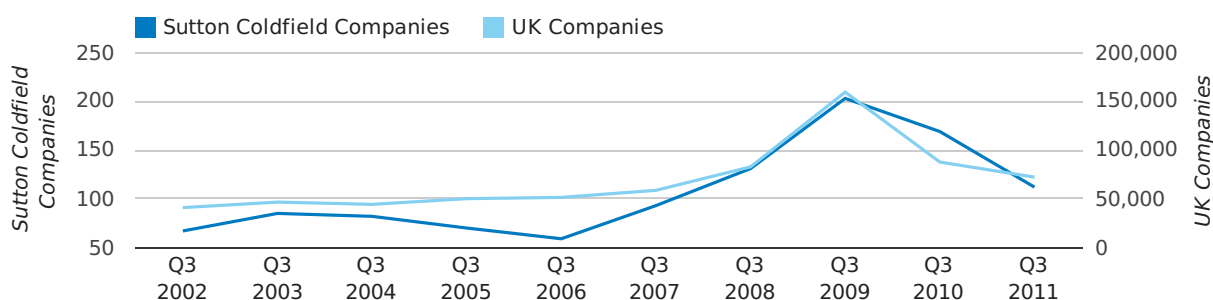
### Quarterly Data (Q3 Jul-Sep 2011)

A total of 112 companies were dissolved in Sutton Coldfield during the third quarter of 2011 (Jul 2011 - Sep 2011).

This figure is a decrease of 33.7% versus the same period last year (Q3 2010). This figure compares well to the UK as a whole, which saw a decrease of 17.6% against the same period last year.

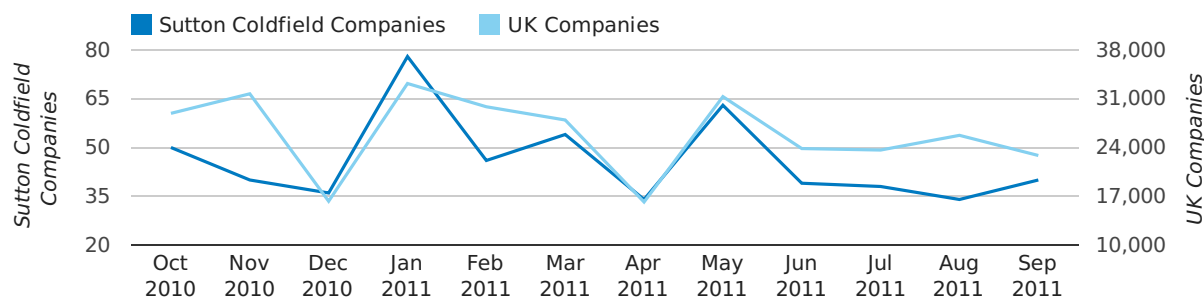
THIRD QUARTER (JUL 2011 - SEP 2011)	SUTTON COLDFIELD	UK
2011	112	72,230
2010	169	87,705
% CHANGE	-33.7%	-17.6%
RECORD YEAR	2009 (203)	2009 (159,401)

### dissolved companies by quarter



### Monthly Data (Jul, Aug & Sep 2011)

#### dissolved companies by month



	JULY	AUGUST	SEPTEMBER
CLOSED COMPANIES IN 2011	38	34	40
CLOSED COMPANIES IN 2010	36	76	57
% CHANGE	5.6%	-55.3%	-30%
RECORD YEAR	2009 (41)	2008 (95)	2009 (113)

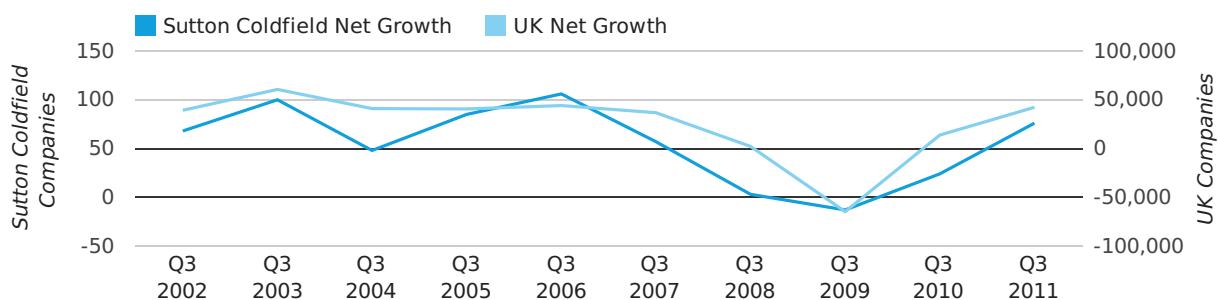
### Quarterly Data (Q3 Jul-Sep 2011)

Net company growth for Sutton Coldfield during the third quarter of 2011 (Jul 2011 - Sep 2011) was 76 companies.

This represents an increase of 216.7% on the same period last year.

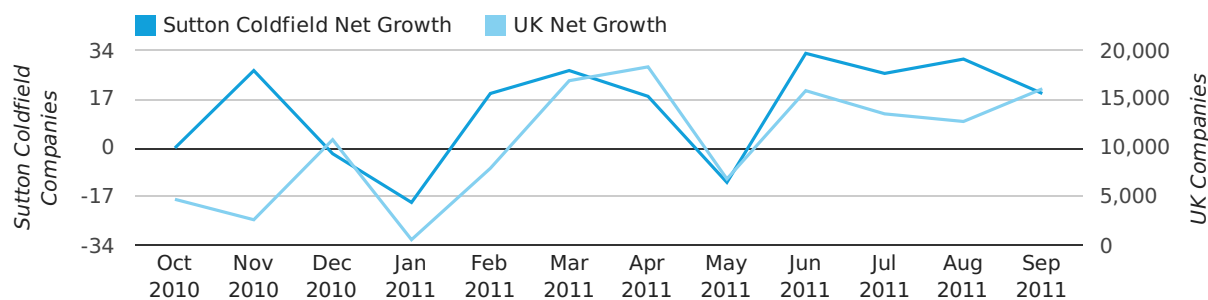
THIRD QUARTER (JUL 2011 - SEP 2011)	SUTTON COLDFIELD	UK
2011	76	42,282
2010	24	13,787
% CHANGE	216.7%	206.7%
RECORD YEAR	2006 (106)	2003 (60,597)

### net growth by quarter



### Monthly Data (Jul, Aug & Sep 2011)

### net growth by month



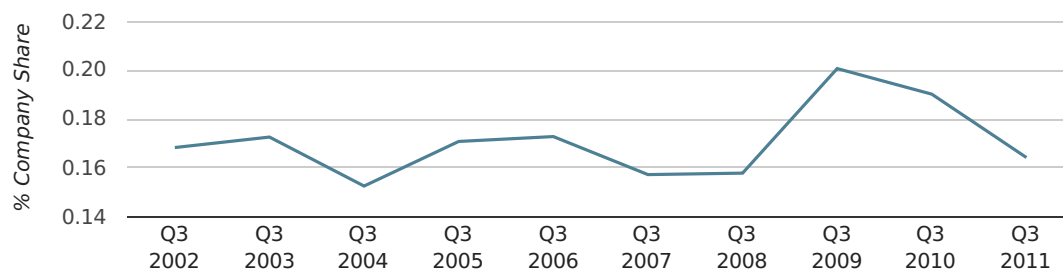
	JULY	AUGUST	SEPTEMBER
NET GROWTH IN 2011	26	31	19
NET GROWTH IN 2010	24	-11	11
% CHANGE	8.3%	-381.8%	72.7%
RECORD YEAR	2008 (40)	2003 (40)	2006 (43)

### Quarterly Data (Q3 Jul-Sep 2011)

In the third quarter of 2011, Sutton Coldfield formed 0.2% of all UK companies.

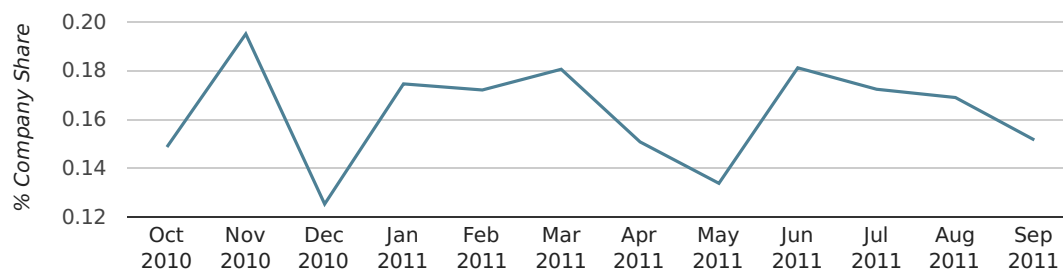
THIRD QUARTER (JUL 2011 - SEP 2011)	SUTTON COLDFIELD
2011	0.2%
2010	0.2%
2009	0.2%
2008	0.2%
2007	0.2%
RECORD YEAR (SINCE 1960)	1965 (0.5%)

### company share by quarter



### Monthly Data (Jul, Aug & Sep 2011)

### company share by month



	JULY	AUGUST	SEPTEMBER
UK FORMATION SHARE IN 2011	0.2%	0.2%	0.2%
UK FORMATION SHARE IN 2010	0.2%	0.2%	0.2%
% CHANGE	-2.4%	-15.8%	-21.7%
RECORD YEAR	1962 (0.7%)	1960 (0.8%)	1965 (1.0%)

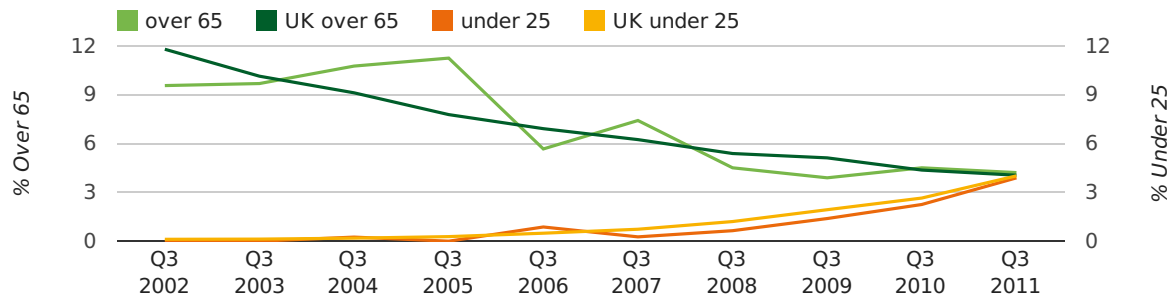
### Quarterly Data (Q3 Jul-Sep 2011)

The average age of a director in the third quarter of 2011 was 43.4.

The percentage of directors under the age of 25 was 3.9% compared to the UK figure of 4.0%.

The percentage of directors over the age of 65 was 4.2% compared to the UK figure of 4.1%.

#### director age by quarter

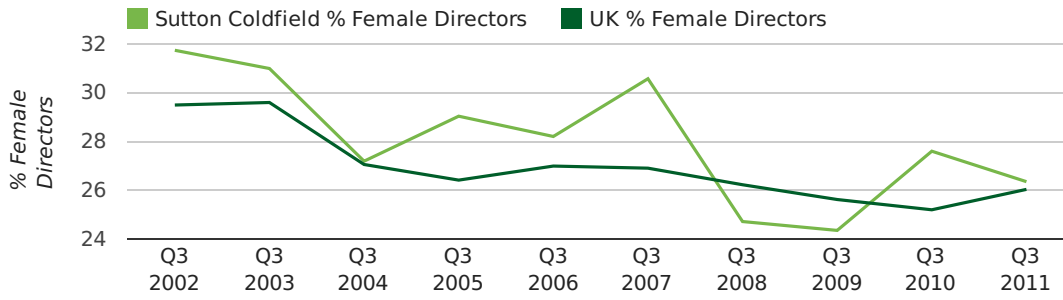


### Quarterly Data (Q3 Jul-Sep 2011)

The record third quarter for female directors in Sutton Coldfield was in 1862 when 50.0% of all directors were female.

26.3% of all director appointments in Sutton Coldfield in the third quarter of 2011 were female. This compares to a UK average of 26.0% for the same period.

#### director gender by quarter





Previous 12 months (Sep 2010-Sep 2011)

Excluding: LIMITED, LTD, &, UK, SERVICES, THE, (UK), AND, LTD., A, LLP, SOLUTIONS, COMPANY, OF.

WORD	PERCENTAGE	UK WORD	UK PERCENTAGE
CONSULTING	1.90%	CONSULTING	5.11%
CONSULTANCY	1.49%	MANAGEMENT	4.75%
MANAGEMENT	1.24%	CONSULTANCY	3.19%
ELECTRICAL	1.08%	PROPERTY	2.41%
ASSOCIATES	1.08%	TRADING	2.06%
SUTTON	1.08%	DESIGN	1.94%
DESIGN	0.91%	ASSOCIATES	1.85%
SYSTEMS	0.83%	BUSINESS	1.82%
PROPERTY	0.74%	CONSULTANTS	1.76%
BUSINESS	0.74%	ENGINEERING	1.74%
SQUARE	0.66%	MEDIA	1.72%
CONSULTANTS	0.66%	CONSTRUCTION	1.72%
J	0.58%	LONDON	1.63%
MIDLANDS	0.58%	J	1.47%
BLUE	0.58%	GLOBAL	1.46%
MEDIA	0.58%	INVESTMENTS	1.43%
PROPERTIES	0.58%	CARE	1.42%
SUPPORT	0.50%	IT	1.38%
FINANCIAL	0.50%	BUILDING	1.30%
(MIDLANDS)	0.50%	PROPERTIES	1.28%
D	0.50%	ELECTRICAL	1.27%
MARKETING	0.50%	M	1.25%
INVESTMENTS	0.50%	ENERGY	1.22%
PROJECTS	0.50%	TRAINING	1.21%
TRANSPORT	0.50%	S	1.21%

## Previous 36 months, excluding companies less than 12 months old

SIC CODE	NUMBER OF COMPANIES	UK COMPANIES
None Supplied	325	204,493
7487 - Other business activities	99	65,177
82990 - Other business support service activities not elsewhere classified	46	29,245
70229 - Management consultancy activities other than financial management	43	15,760
9999 - Dormant Company	41	22,587
62020 - Information technology consultancy activities	34	10,137
7414 - Business & management consultancy	33	14,755
99999 - Dormant Company	32	18,281
7222 - Other software consultancy and supply	26	8,345
7499 - Non-trading company	24	11,543
9305 - Other service activities	24	10,525
7411 - Legal activities	23	1,428
74909 - Other professional, scientific and technical activities not elsewhere classified	22	7,551
86210 - General medical practice activities	19	1,986
96090 - Other service activities not elsewhere classified	19	10,018
8512 - Medical practice activities	18	2,427
7260 - Other computer related activities	15	8,686
4521 - General construction & civil engineering	14	6,321
74990 - Non-trading company	12	8,064
9302 - Hairdressing & other beauty treatment	11	1,706