

# Torquay

2011 half year business confidence report



## contents

new company registrations

closed companies (dissolved)

net company growth

uk company share

director age

director gender

naming trends

sic data

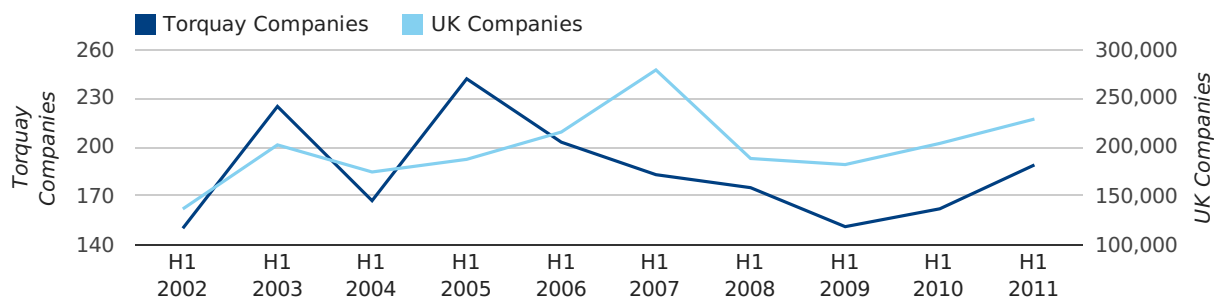
## Half Year Data (Jan-Jun 2011)

In the first half of 2011 a total of 189 companies were formed in Torquay. This figure is 16.7% higher than last year, which compares well to the UK wide figure of 12.3%.

The highest total for a first half year in Torquay occurred in 2005 when a total of 242 were formed.

HALF YEAR (JAN-JUN)	TORQUAY	UK
2011	189	228,735
2010	162	203,749
% CHANGE	16.7%	12.3%
RECORD YEAR	2005 (242)	2007 (279,097)

### new companies by half year



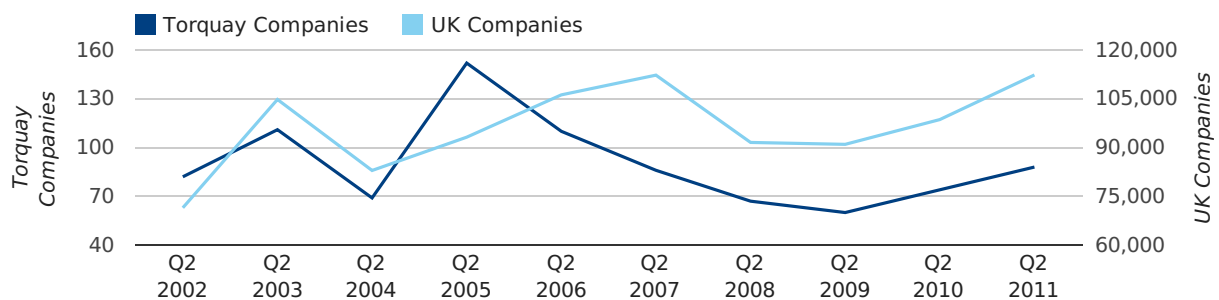
## Quarterly Data (Q2 Apr-Jun 2011)

A total of 88 companies were registered in Torquay during the second quarter of 2011 (Apr 2011 - Jun 2011).

This figure is an increase of 18.9% versus the same period last year (Q2 2010). This figure compares well to the UK as a whole, which saw an increase of 13.9% against the same period last year.

SECOND QUARTER (APR 2011 - JUN 2011)	TORQUAY	UK
2011	88	112,344
2010	74	98,612
% CHANGE	18.9%	13.9%
RECORD YEAR	2005 (152)	2011 (112,344)

### new companies by quarter



# Monthly Data (Apr, May & Jun 2011)

## new companies by month



	APRIL	MAY	JUNE
NEW COMPANIES IN 2011	30	28	30
NEW COMPANIES IN 2010	24	20	30
% CHANGE	25.0%	40.0%	0.0%
RECORD YEAR	2005 (81)	2003 (42)	2005 (40)

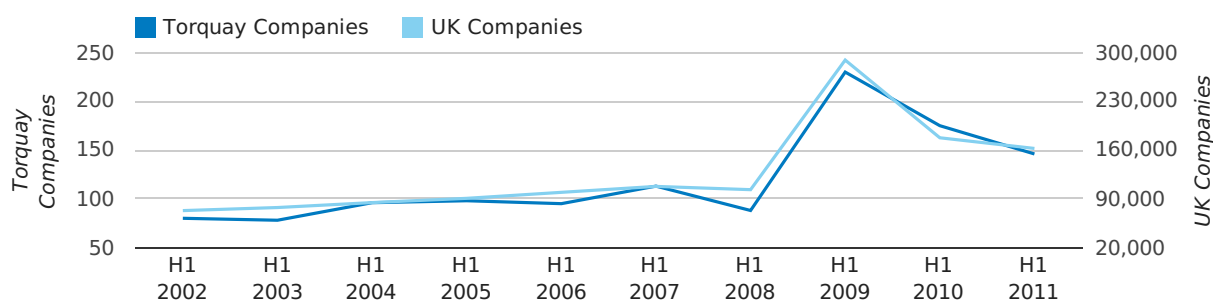
### Half Year Data (Jan-Jun 2011)

In the first half of 2011 a total of 146 companies were dissolved in Torquay. This figure is 16.6% lower than last year, which compares well to the UK wide change of -8.6%.

The highest total for a first half year in Torquay occurred in 2009 when a total of 230 were closed.

HALF YEAR (JAN-JUN)	TORQUAY	UK
2011	146	162,310
2010	175	177,631
% CHANGE	-16.6%	-8.6%
RECORD YEAR	2009 (230)	2009 (289,236)

### dissolved companies by half year



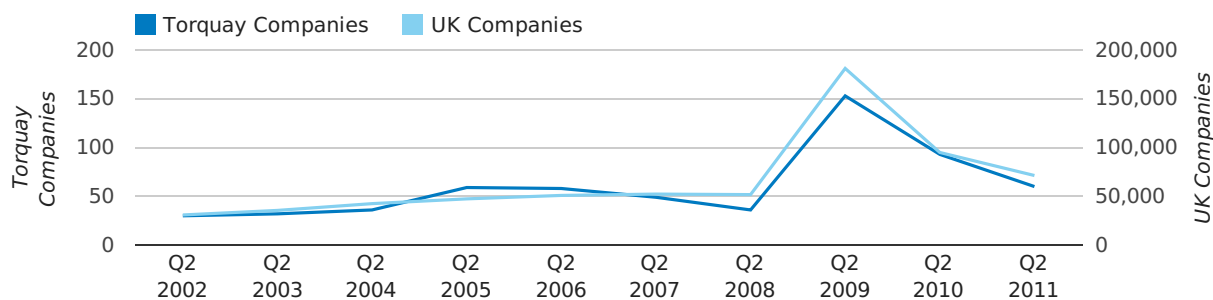
### Quarterly Data (Q2 Apr-Jun 2011)

A total of 60 companies were dissolved in Torquay during the second quarter of 2011 (Apr 2011 - Jun 2011).

This figure is a decrease of 35.5% versus the same period last year (Q2 2010). This figure compares well to the UK as a whole, which saw a decrease of 24.9% against the same period last year.

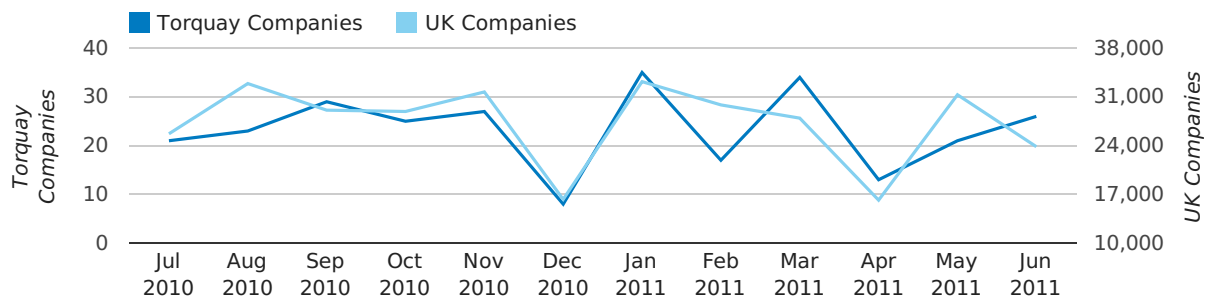
SECOND QUARTER (APR 2011 - JUN 2011)	TORQUAY	UK
2011	60	71,324
2010	93	94,954
% CHANGE	-35.5%	-24.9%
RECORD YEAR	2009 (153)	2009 (181,176)

### dissolved companies by quarter



# Monthly Data (Apr, May & Jun 2011)

## dissolved companies by month



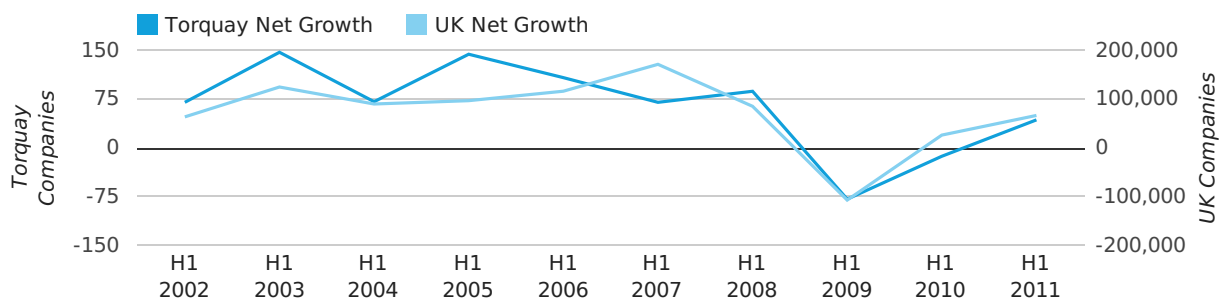
	APRIL	MAY	JUNE
CLOSED COMPANIES IN 2011	13	21	26
CLOSED COMPANIES IN 2010	18	33	42
% CHANGE	-27.8%	-36.4%	-38%
RECORD YEAR	2009 (39)	2009 (70)	2009 (44)

### Half Year Data (Jan-Jun 2011)

In the first half of 2011 the company register for Torquay increased by 43 companies. This figure is 430.8% lower than last year, which compares badly to a UK increase of 154.3%.

HALF YEAR (JAN-JUN)	TORQUAY	UK
2011	43	66,425
2010	-13	26,118
% CHANGE	-430.8%	154.3%
RECORD YEAR	2003 (147)	2007 (171,296)

#### net growth by half year



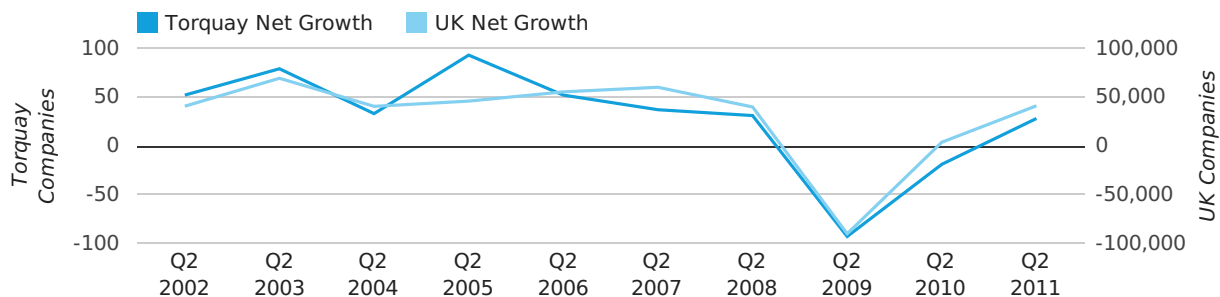
### Quarterly Data (Q2 Apr-Jun 2011)

Net company growth for Torquay during the second quarter of 2011 (Apr 2011 - Jun 2011) was 28 companies.

This represents an increase of 247.4% on the same period last year.

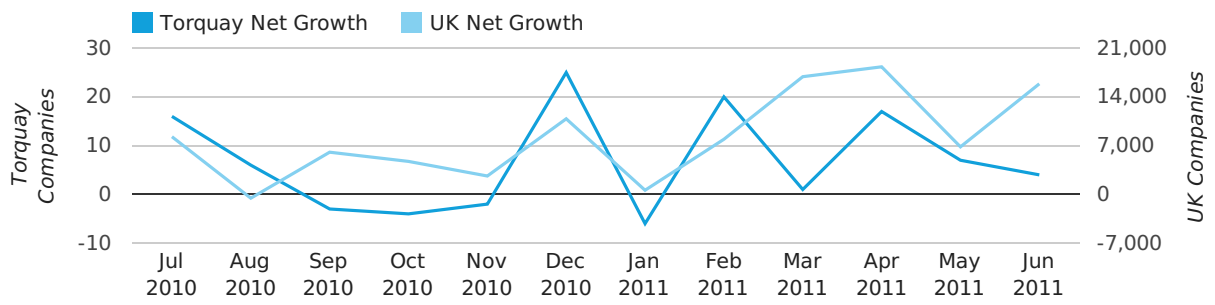
SECOND QUARTER (APR 2011 - JUN 2011)	TORQUAY	UK
2011	28	41,020
2010	-19	3,658
% CHANGE	-247.4%	1,021.4%
RECORD YEAR	2005 (93)	2003 (69,274)

#### net growth by quarter



# Monthly Data (Apr, May & Jun 2011)

## net growth by month



	APRIL	MAY	JUNE
NET GROWTH IN 2011	17	7	4
NET GROWTH IN 2010	6	-13	-12
% CHANGE	183.3%	-153.8%	-133.3%
RECORD YEAR	2005 (62)	2003 (34)	2003 (24)

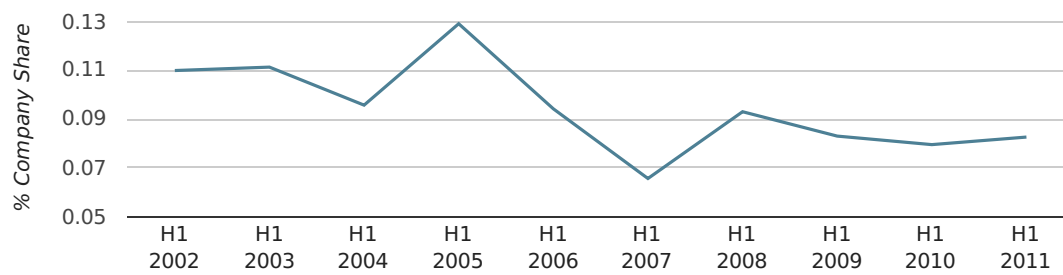


### Half Year Data (Jan-Jun 2011)

In the first half of 2011 Torquay formed 0.1% of all UK companies. This is the same as the 2010 figure of 0.1%.

HALF YEAR (JAN-JUN)	TORQUAY
2011	0.1%
2010	0.1%
2009	0.1%
2008	0.1%
2007	0.1%
RECORD YEAR (SINCE 1960)	1966 (0.2%)

#### company share by half year

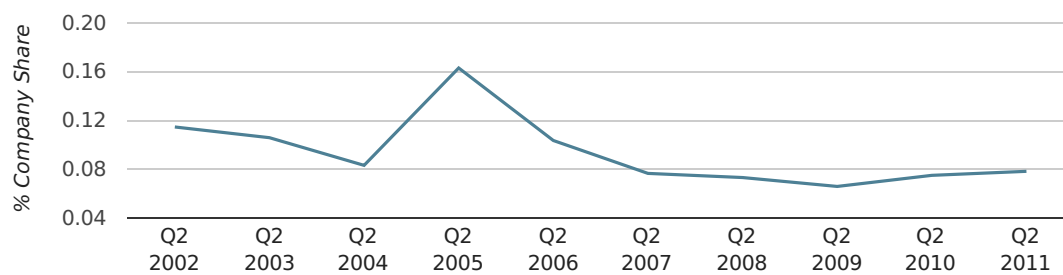


### Quarterly Data (Q2 Apr-Jun 2011)

In the second quarter of 2011, Torquay formed 0.1% of all UK companies.

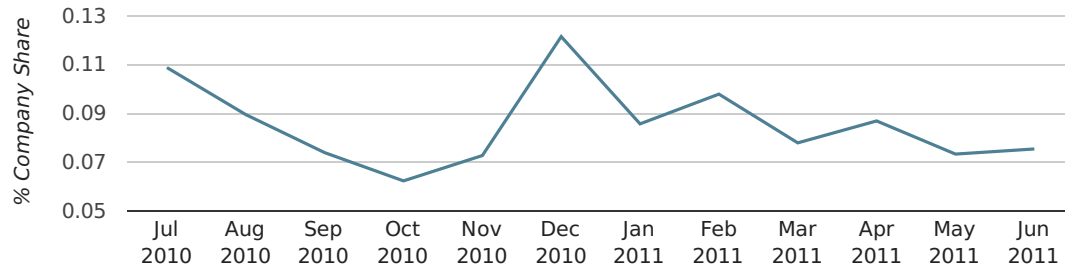
SECOND QUARTER (APR 2011 - JUN 2011)	TORQUAY
2011	0.1%
2010	0.1%
2009	0.1%
2008	0.1%
2007	0.1%
RECORD YEAR (SINCE 1960)	1966 (0.4%)

#### company share by quarter



# Monthly Data (Apr, May & Jun 2011)

## company share by month



	APRIL	MAY	JUNE
UK FORMATION SHARE IN 2011	0.1%	0.1%	0.1%
UK FORMATION SHARE IN 2010	0.1%	0.1%	0.1%
% CHANGE	21.0%	10.2%	-11.4%
RECORD YEAR	2005 (0.2%)	1966 (0.4%)	1966 (0.4%)

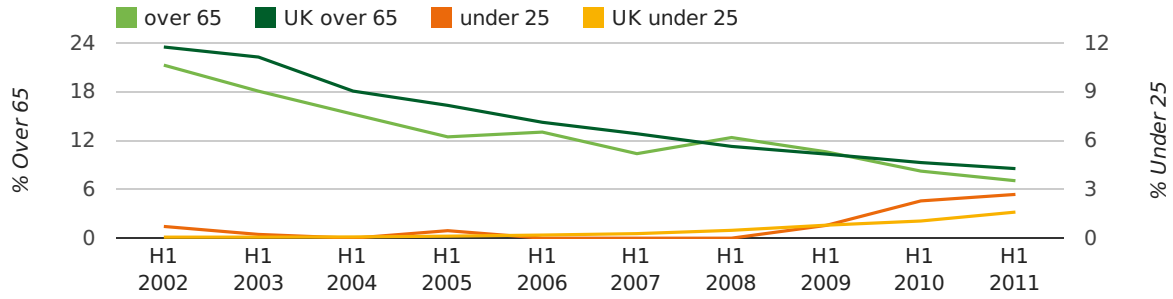
### Half Year Data (Jan-Jun 2011)

The average age of a director in the first half of 2011 was 46.8.

The percentage of directors under the age of 25 was 2.7% compared to the UK figure of 3.2%.

The percentage of directors over the age of 65 was 7.1% compared to the UK figure of 4.3%.

#### director age by half year



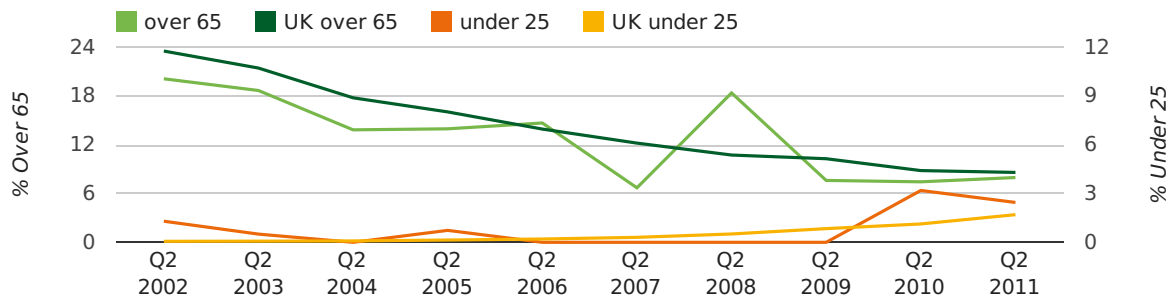
### Quarterly Data (Q2 Apr-Jun 2011)

The average age of a director in the second quarter of 2011 was 46.6.

The percentage of directors under the age of 25 was 2.5% compared to the UK figure of 3.4%.

The percentage of directors over the age of 65 was 8.0% compared to the UK figure of 4.3%.

#### director age by quarter

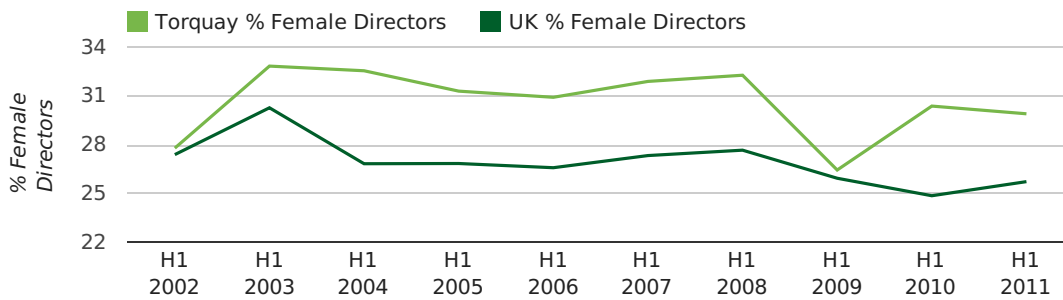


### Half Year Data (Jan-Jun 2011)

The record first half year for female directors in Torquay was 1861 when 40.0% of all directors were female.

29.9% of all director appointments in Torquay in the first half of 2011 were female. This compares to a UK average of 25.7% for the same period.

#### director gender by half year

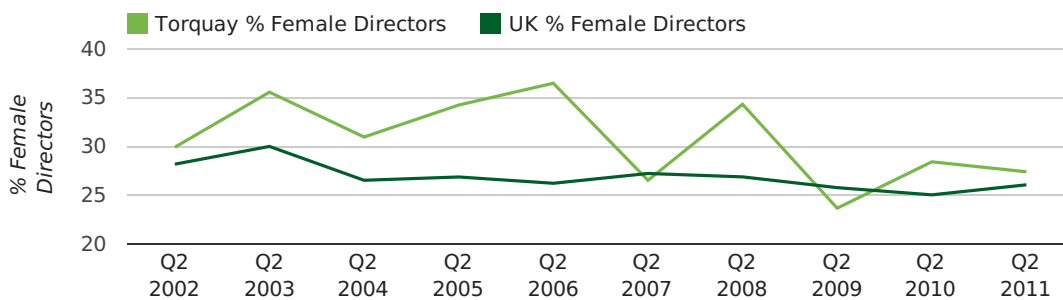


### Quarterly Data (Q2 Apr-Jun 2011)

The record second quarter for female directors in Torquay was in 1866 when 66.7% of all directors were female.

27.4% of all director appointments in Torquay in the second quarter of 2011 were female. This compares to a UK average of 26.1% for the same period.

#### director gender by quarter



## Previous 12 months (Jun 2010-Jun 2011)

Excluding: LIMITED, LTD, &amp;, UK, SERVICES, THE, (UK), AND, LTD., A, LLP, SOLUTIONS, COMPANY, OF.

WORD	PERCENTAGE	UK WORD	UK PERCENTAGE
MANAGEMENT	1.94%	CONSULTING	5.09%
TORQUAY	1.34%	MANAGEMENT	4.86%
TORBAY	1.19%	CONSULTANCY	3.17%
PROPERTY	0.89%	PROPERTY	2.43%
SOUTH	0.89%	TRADING	2.05%
J	0.75%	DESIGN	1.94%
ACADEMY	0.75%	ASSOCIATES	1.92%
(TORQUAY)	0.75%	BUSINESS	1.87%
M	0.75%	CONSTRUCTION	1.77%
LA	0.60%	CONSULTANTS	1.76%
DEVON	0.60%	MEDIA	1.73%
(Sw)	0.60%	ENGINEERING	1.67%
HOUSE	0.60%	LONDON	1.60%
CARE	0.60%	GLOBAL	1.46%
CONSULTING	0.60%	J	1.44%
CONSTRUCTION	0.60%	CARE	1.44%
DEVELOPMENT	0.60%	INVESTMENTS	1.42%
PARTNERSHIP	0.45%	IT	1.39%
BUILDING	0.45%	BUILDING	1.32%
WEST	0.45%	PROPERTIES	1.31%
SCHOOL	0.45%	ELECTRICAL	1.30%
SAREEN	0.45%	M	1.27%
G	0.45%	S	1.23%
GLOBAL	0.45%	ENTERPRISES	1.20%
CLUB	0.45%	SYSTEMS	1.20%

## Previous 36 months, excluding companies less than 12 months old

SIC CODE	NUMBER OF COMPANIES	UK COMPANIES
None Supplied	171	202,072
7487 - Other business activities	50	60,758
82990 - Other business support service activities not elsewhere classified	21	30,647
9999 - Dormant Company	14	20,111
99999 - Dormant Company	12	18,918
7414 - Business & management consultancy	10	13,053
9305 - Other service activities	9	9,063
96090 - Other service activities not elsewhere classified	9	10,322
7499 - Non-trading company	8	10,955
62090 - Other information technology service activities	8	7,095
43290 - Other construction installation	7	1,421
68100 - Buying and selling of own real estate	6	2,543
98000 - Residents property management	6	2,888
5530 - Restaurants	6	5,086
7260 - Other computer related activities	6	7,849
70229 - Management consultancy activities other than financial management	6	16,419
4534 - Other building installation	6	2,274
68209 - Other letting and operating of own or leased real estate	6	3,790
55100 - Hotels and similar accommodation	5	668
4545 - Other building completion	5	2,456