

# Torquay

2012 half year business confidence report



## contents

new company registrations

closed companies (dissolved)

net company growth

uk company share

director age

director gender

naming trends

sic data

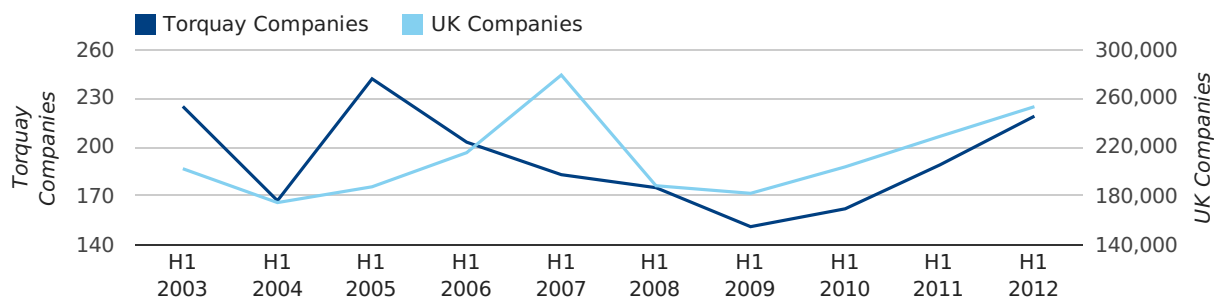
### Half Year Data (Jan-Jun 2012)

In the first half of 2012 a total of 219 companies were formed in Torquay. This figure is 15.9% higher than last year, which compares well to the UK wide figure of 10.7%.

The highest total for a first half year in Torquay occurred in 2005 when a total of 242 were formed.

HALF YEAR (JAN-JUN)	TORQUAY	UK
2012	219	253,150
2011	189	228,735
% CHANGE	15.9%	10.7%
RECORD YEAR	2005 (242)	2007 (279,097)

### new companies by half year



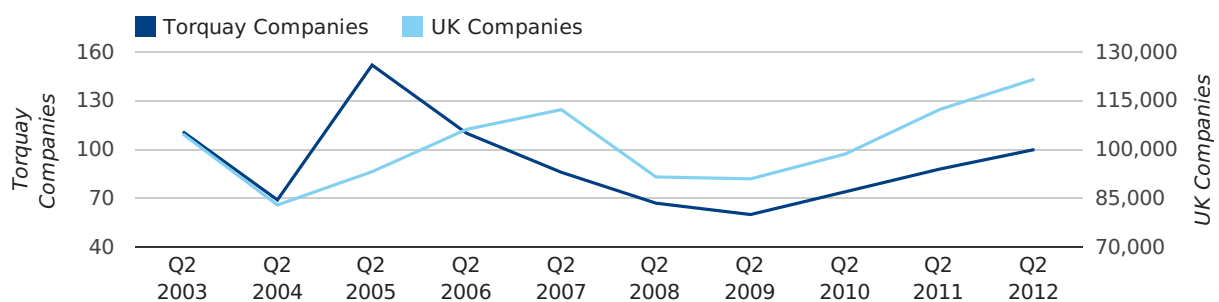
### Quarterly Data (Q2 Apr-Jun 2012)

A total of 100 companies were registered in Torquay during the second quarter of 2012 (Apr 2012 - Jun 2012).

This figure is an increase of 13.6% versus the same period last year (Q2 2011). This figure compares equally to the UK as a whole, which saw an increase of 8.3% against the same period last year.

SECOND QUARTER (APR 2012 - JUN 2012)	TORQUAY	UK
2012	100	121,659
2011	88	112,344
% CHANGE	13.6%	8.3%
RECORD YEAR	2005 (152)	2012 (121,659)

### new companies by quarter



# Monthly Data (Apr, May & Jun 2012)

## new companies by month



	APRIL	MAY	JUNE
NEW COMPANIES IN 2012	30	34	36
NEW COMPANIES IN 2011	30	28	30
% CHANGE	0.0%	21.4%	20.0%
RECORD YEAR	2005 (81)	2003 (42)	2005 (40)

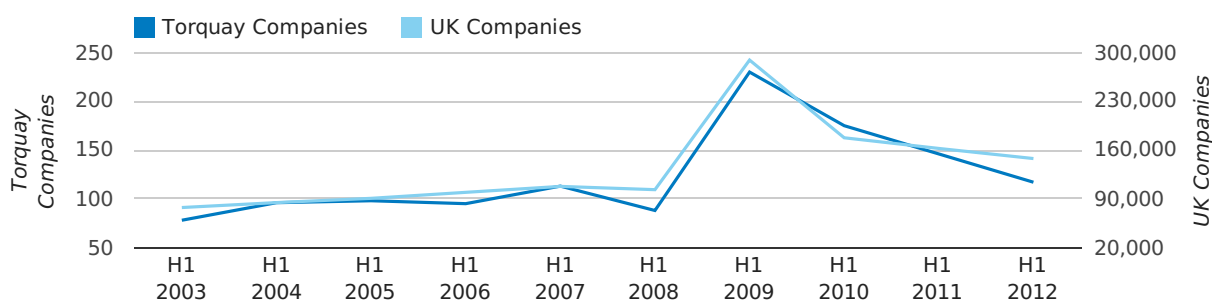
### Half Year Data (Jan-Jun 2012)

In the first half of 2012 a total of 117 companies were dissolved in Torquay. This figure is 19.9% lower than last year, which compares well to the UK wide change of -8.9%.

The highest total for a first half year in Torquay occurred in 2009 when a total of 230 were closed.

HALF YEAR (JAN-JUN)	TORQUAY	UK
2012	117	147,793
2011	146	162,310
% CHANGE	-19.9%	-8.9%
RECORD YEAR	2009 (230)	2009 (289,236)

### dissolved companies by half year



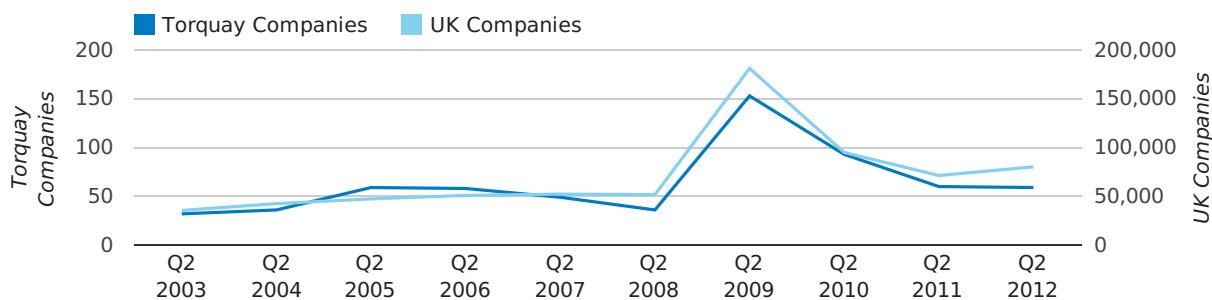
### Quarterly Data (Q2 Apr-Jun 2012)

A total of 59 companies were dissolved in Torquay during the second quarter of 2012 (Apr 2012 - Jun 2012).

This figure is a decrease of 1.7% versus the same period last year (Q2 2011). This figure compares well to the UK as a whole, which saw an increase of 12.5% against the same period last year.

SECOND QUARTER (APR 2012 - JUN 2012)	TORQUAY	UK
2012	59	80,217
2011	60	71,324
% CHANGE	-1.7%	12.5%
RECORD YEAR	2009 (153)	2009 (181,176)

### dissolved companies by quarter



# Monthly Data (Apr, May & Jun 2012)

## dissolved companies by month



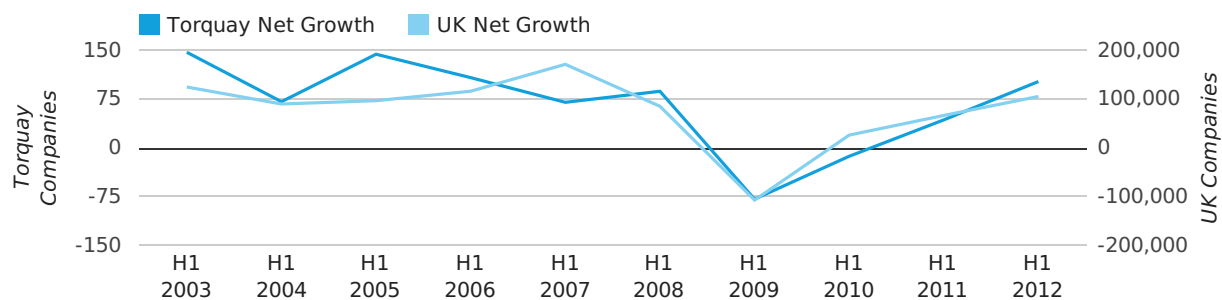
	APRIL	MAY	JUNE
CLOSED COMPANIES IN 2012	25	17	17
CLOSED COMPANIES IN 2011	13	21	26
% CHANGE	92.3%	-19.0%	-35%
RECORD YEAR	2009 (39)	2009 (70)	2009 (44)

### Half Year Data (Jan-Jun 2012)

In the first half of 2012 the company register for Torquay increased by 102 companies. This figure is 137.2% higher than last year, which compares well to a UK increase of 58.6%.

HALF YEAR (JAN-JUN)	TORQUAY	UK
2012	102	105,357
2011	43	66,425
% CHANGE	137.2%	58.6%
RECORD YEAR	2003 (147)	2007 (171,296)

### net growth by half year



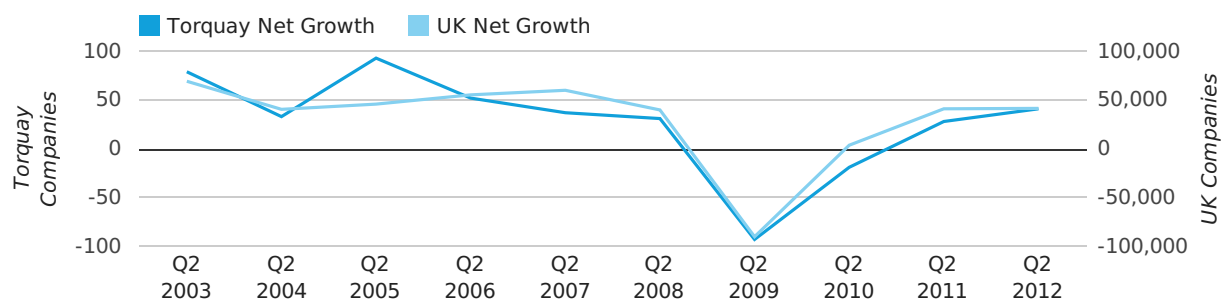
### Quarterly Data (Q2 Apr-Jun 2012)

Net company growth for Torquay during the second quarter of 2012 (Apr 2012 - Jun 2012) was 41 companies.

This represents an increase of 46.4% on the same period last year.

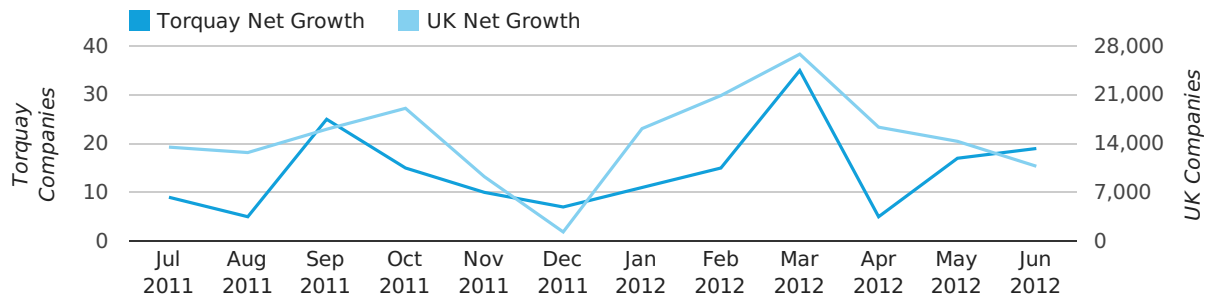
SECOND QUARTER (APR 2012 - JUN 2012)	TORQUAY	UK
2012	41	41,442
2011	28	41,020
% CHANGE	46.4%	1.0%
RECORD YEAR	2005 (93)	2003 (69,274)

### net growth by quarter



# Monthly Data (Apr, May & Jun 2012)

## net growth by month



	APRIL	MAY	JUNE
NET GROWTH IN 2012	5	17	19
NET GROWTH IN 2011	17	7	4
% CHANGE	-70.6%	142.9%	375.0%
RECORD YEAR	2005 (62)	2003 (34)	2003 (24)

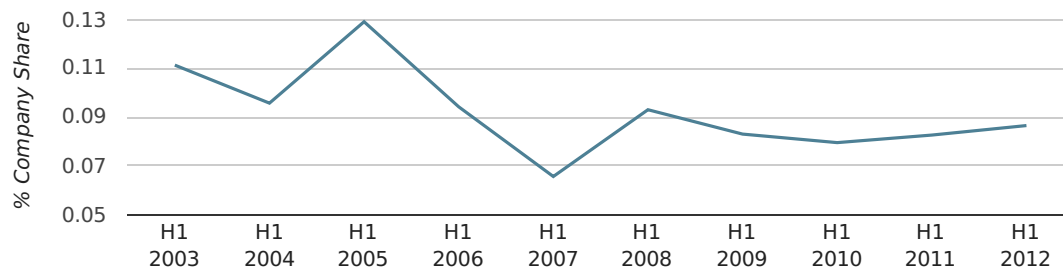


### Half Year Data (Jan-Jun 2012)

In the first half of 2012 Torquay formed 0.1% of all UK companies. This is the same as the 2011 figure of 0.1%.

HALF YEAR (JAN-JUN)	TORQUAY
2012	0.1%
2011	0.1%
2010	0.1%
2009	0.1%
2008	0.1%
RECORD YEAR (SINCE 1960)	1966 (0.2%)

#### company share by half year

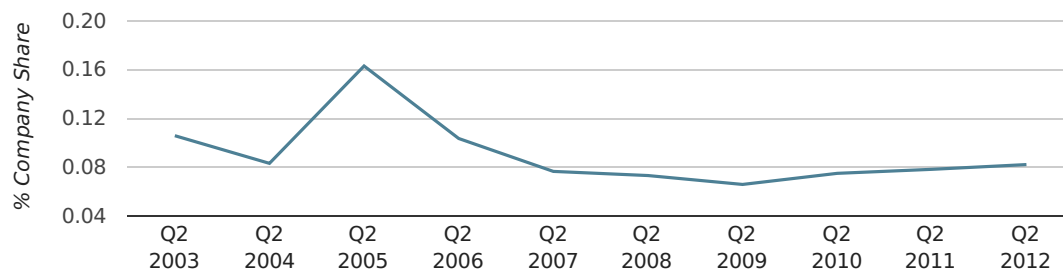


### Quarterly Data (Q2 Apr-Jun 2012)

In the second quarter of 2012, Torquay formed 0.1% of all UK companies.

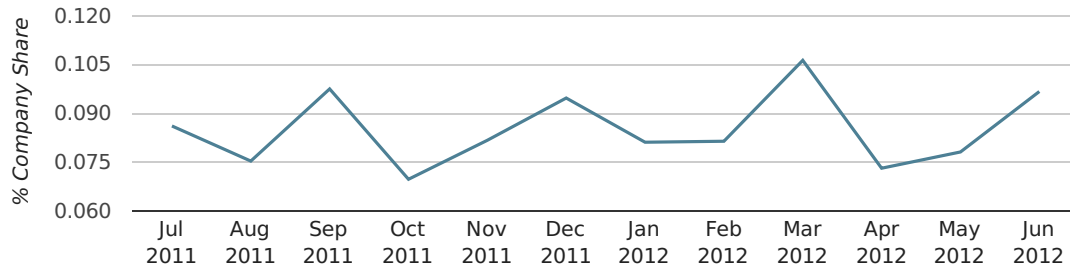
SECOND QUARTER (APR 2012 - JUN 2012)	TORQUAY
2012	0.1%
2011	0.1%
2010	0.1%
2009	0.1%
2008	0.1%
RECORD YEAR (SINCE 1960)	1966 (0.4%)

#### company share by quarter



## Monthly Data (Apr, May & Jun 2012)

### company share by month



	APRIL	MAY	JUNE
UK FORMATION SHARE IN 2012	0.1%	0.1%	0.1%
UK FORMATION SHARE IN 2011	0.1%	0.1%	0.1%
% CHANGE	-15.9%	6.5%	28.2%
RECORD YEAR	2005 (0.2%)	1966 (0.4%)	1966 (0.4%)

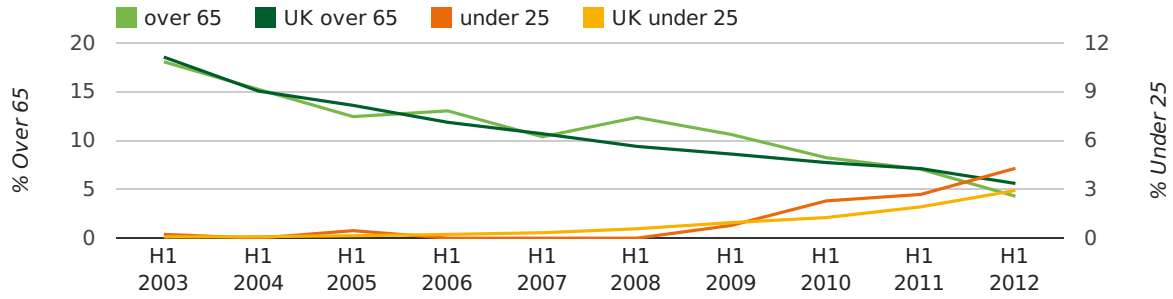
### Half Year Data (Jan-Jun 2012)

The average age of a director in the first half of 2012 was 43.5.

The percentage of directors under the age of 25 was 4.3% compared to the UK figure of 4.9%.

The percentage of directors over the age of 65 was 4.3% compared to the UK figure of 3.4%.

#### director age by half year



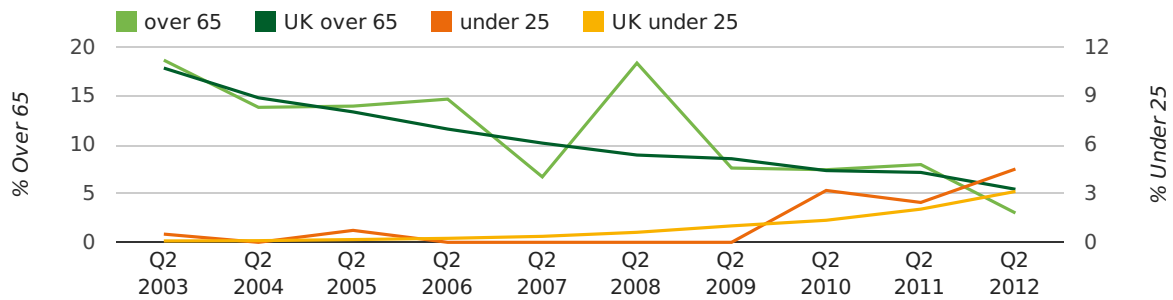
### Quarterly Data (Q2 Apr-Jun 2012)

The average age of a director in the second quarter of 2012 was 43.4.

The percentage of directors under the age of 25 was 4.5% compared to the UK figure of 5.2%.

The percentage of directors over the age of 65 was 3.0% compared to the UK figure of 3.3%.

#### director age by quarter

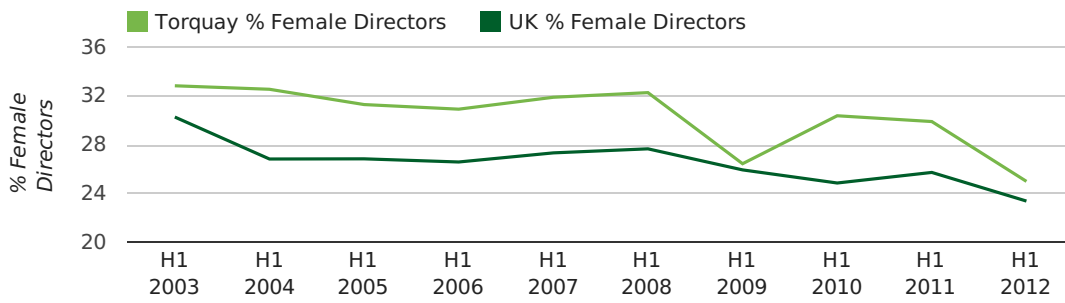


### Half Year Data (Jan-Jun 2012)

The record first half year for female directors in Torquay was 1857 when 40.0% of all directors were female.

25.0% of all director appointments in Torquay in the first half of 2012 were female. This compares to a UK average of 23.4% for the same period.

#### director gender by half year

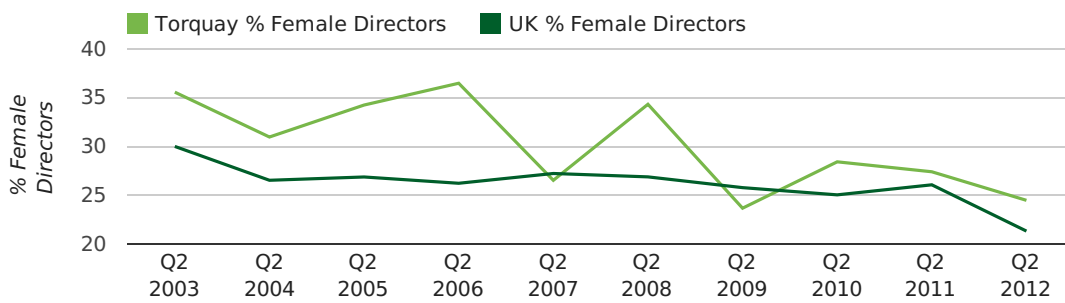


### Quarterly Data (Q2 Apr-Jun 2012)

The record second quarter for female directors in Torquay was in 1866 when 66.7% of all directors were female.

24.5% of all director appointments in Torquay in the second quarter of 2012 were female. This compares to a UK average of 21.3% for the same period.

#### director gender by quarter



## Previous 12 months (Jun 2011-Jun 2012)

Excluding: LIMITED, LTD, &amp;, UK, SERVICES, THE, (UK), AND, LTD., A, LLP, SOLUTIONS, COMPANY, OF.

WORD	PERCENTAGE	UK WORD	UK PERCENTAGE
TORBAY	1.31%	CONSULTING	5.07%
DEVON	1.18%	MANAGEMENT	4.74%
CARE	1.05%	CONSULTANCY	3.28%
MUSIC	0.92%	PROPERTY	2.35%
SOUTH	0.79%	TRADING	2.10%
PROPERTY	0.79%	DESIGN	1.89%
CONSTRUCTION	0.79%	ENGINEERING	1.87%
TORQUAY	0.79%	ASSOCIATES	1.82%
CONSULTING	0.66%	CONSULTANTS	1.78%
J	0.66%	CONSTRUCTION	1.71%
WEST	0.66%	BUSINESS	1.70%
BUILDING	0.66%	MEDIA	1.69%
ENERGY	0.53%	LONDON	1.68%
(Sw)	0.53%	J	1.57%
LEISURE	0.53%	GLOBAL	1.51%
(TORQUAY)	0.53%	INVESTMENTS	1.48%
DAYLIGHT	0.53%	IT	1.42%
LE	0.53%	CARE	1.31%
SERVICE	0.53%	PROPERTIES	1.31%
DEVELOPMENTS	0.53%	M	1.26%
MANAGEMENT	0.53%	ELECTRICAL	1.23%
C	0.39%	BUILDING	1.23%
PROPERTIES	0.39%	SECURITY	1.19%
COURT	0.39%	S	1.18%
CATERING	0.39%	ENTERPRISES	1.17%

## Previous 36 months, excluding companies less than 12 months old

SIC CODE	NUMBER OF COMPANIES	UK COMPANIES
None Supplied	207	244,457
7487 - Other business activities	39	47,029
82990 - Other business support service activities not elsewhere classified	32	35,447
99999 - Dormant Company	19	26,088
9999 - Dormant Company	14	16,469
96090 - Other service activities not elsewhere classified	9	14,220
56101 - Licenced restaurants	8	2,540
74990 - Non-trading company	7	9,706
9305 - Other service activities	7	7,926
7260 - Other computer related activities	7	6,456
4521 - General construction & civil engineering	7	4,644
70229 - Management consultancy activities other than financial management	7	20,390
43220 - Plumbing, heat and air-conditioning installation	6	2,716
62090 - Other information technology service activities	6	8,258
47910 - Retail sale via mail order houses or via Internet	6	3,818
43290 - Other construction installation	6	1,796
55100 - Hotels and similar accommodation	6	819
41100 - Development of building projects	6	5,149
62012 - Business and domestic software development	6	4,742
68100 - Buying and selling of own real estate	6	3,143