

Uxbridge

q1 2011 business confidence report



headlines

- Q1 2011 saw a new record in company registrations in Uxbridge when compared to any previous Q1.
- Q1 2011 was a record quarter for company registrations in Uxbridge when compared to any quarter in history.
- February 2011 saw a new record in company registrations in Uxbridge when compared to any previous February.
- January 2011 saw a new record in company registrations in Uxbridge when compared to any previous January.
- Q1 2011 saw a new record in net growth in Uxbridge when compared to any previous Q1.
- March 2011 saw a new record in net growth in Uxbridge when compared to any previous March.

contents

new company registrations

closed companies (dissolved)

net company growth

uk company share

director age

director gender

naming trends

sic data

Quarterly Data (Q1 Jan-Mar 2011)

Q1 2011 saw a new record in company registrations in Uxbridge when compared to any previous Q1.

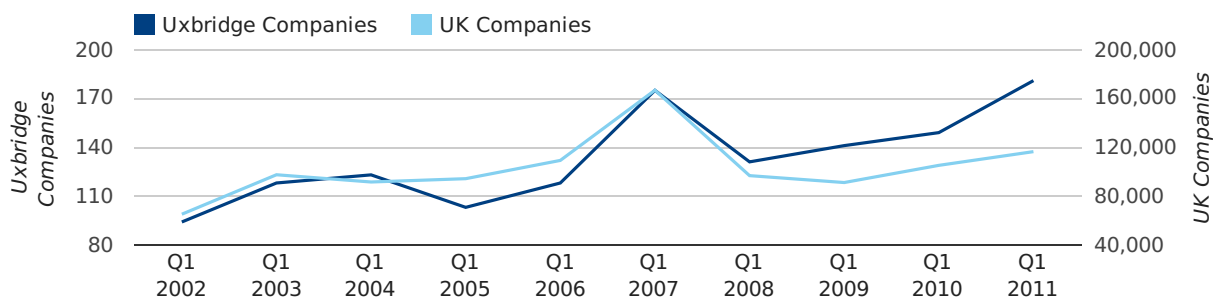
Q1 2011 was a record quarter for company registrations in Uxbridge when compared to any quarter in history.

A total of 181 companies were registered in Uxbridge during the first quarter of 2011 (Jan 2011 - Mar 2011).

This figure is an increase of 21.5% versus the same period last year (Q1 2010). This figure compares well to the UK as a whole, which saw an increase of 10.7% against the same period last year.

FIRST QUARTER (JAN 2011 - MAR 2011)	UXBRIDGE	UK
2011	181	116,391
2010	149	105,137
% CHANGE	21.5%	10.7%
RECORD YEAR	2011 (181)	2007 (166,814)

new companies by quarter

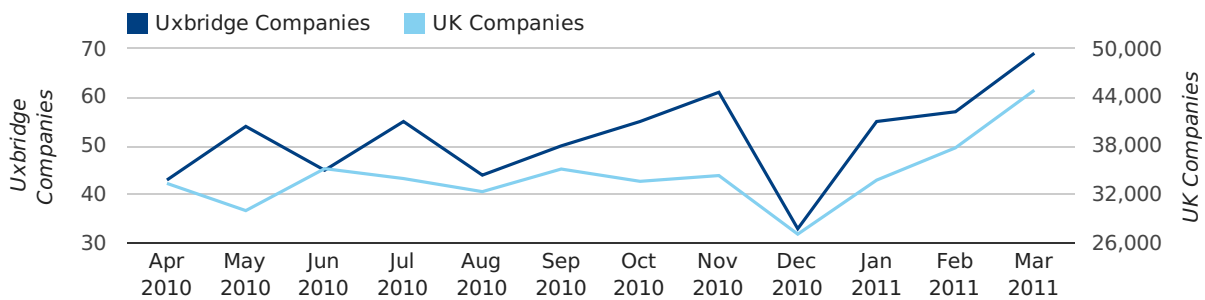


Monthly Data (Jan, Feb & Mar 2011)

February 2011 saw a new record in company registrations in Uxbridge when compared to any previous February.

January 2011 saw a new record in company registrations in Uxbridge when compared to any previous January.

new companies by month



	JANUARY	FEBRUARY	MARCH
NEW COMPANIES IN 2011	55	57	69
NEW COMPANIES IN 2010	39	48	62
% CHANGE	41.0%	18.8%	11.3%
RECORD YEAR	2011 (55)	2011 (57)	2007 (77)

Quarterly Data (Q1 Jan-Mar 2011)

A total of 96 companies were dissolved in Uxbridge during the first quarter of 2011 (Jan 2011 - Mar 2011).

This figure is a decrease of 5.9% versus the same period last year (Q1 2010). This figure compares well to the UK as a whole, which saw an increase of 10.0% against the same period last year.

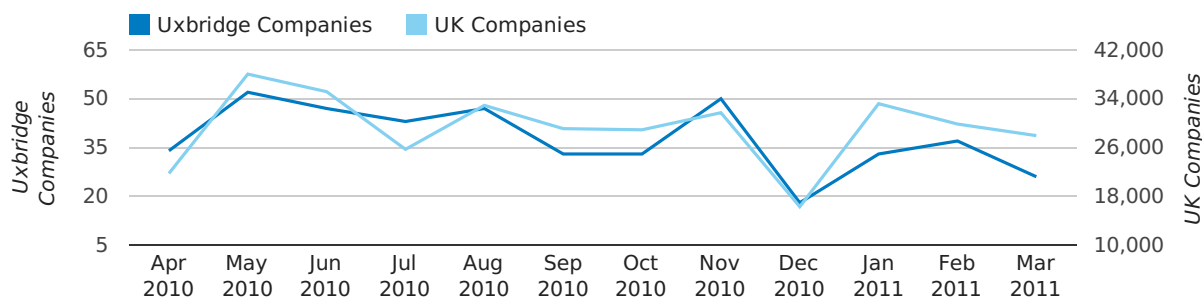
FIRST QUARTER (JAN 2011 - MAR 2011)	UXBRIDGE	UK
2011	96	90,986
2010	102	82,677
% CHANGE	-5.9%	10.0%
RECORD YEAR	2004 (142)	2009 (108,060)

dissolved companies by quarter



Monthly Data (Jan, Feb & Mar 2011)

dissolved companies by month



	JANUARY	FEBRUARY	MARCH
CLOSED COMPANIES IN 2011	33	37	26
CLOSED COMPANIES IN 2010	24	32	46
% CHANGE	37.5%	15.6%	-43%
RECORD YEAR	2008 (48)	2004 (90)	2009 (99)

Quarterly Data (Q1 Jan-Mar 2011)

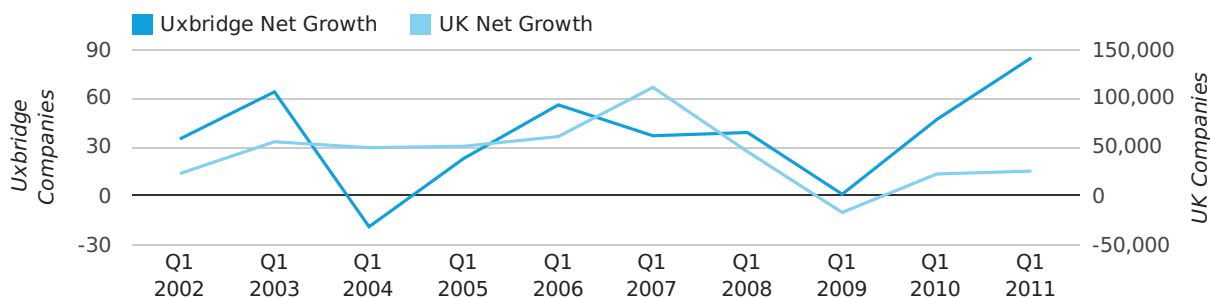
Q1 2011 saw a new record in net growth in Uxbridge when compared to any previous Q1.

Net company growth for Uxbridge during the first quarter of 2011 (Jan 2011 - Mar 2011) was 85 companies.

This represents an increase of 80.9% on the same period last year.

FIRST QUARTER (JAN 2011 - MAR 2011)	UXBRIDGE	UK
2011	85	25,405
2010	47	22,460
% CHANGE	80.9%	13.1%
RECORD YEAR	2011 (85)	2007 (111,282)

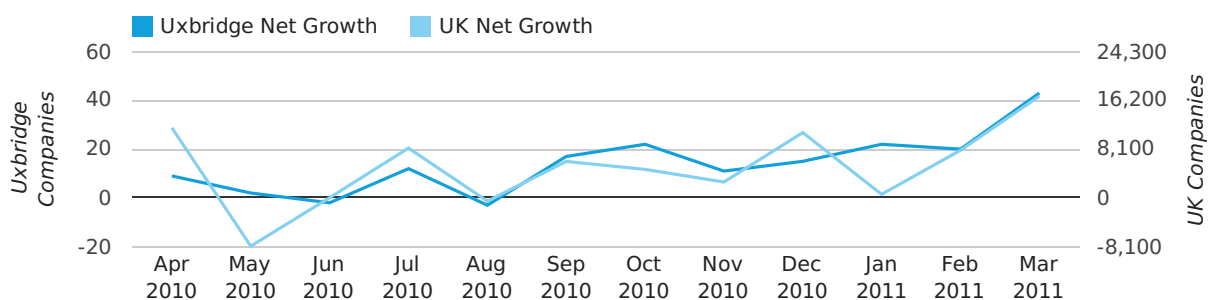
net growth by quarter



Monthly Data (Jan, Feb & Mar 2011)

March 2011 saw a new record in net growth in Uxbridge when compared to any previous March.

net growth by month



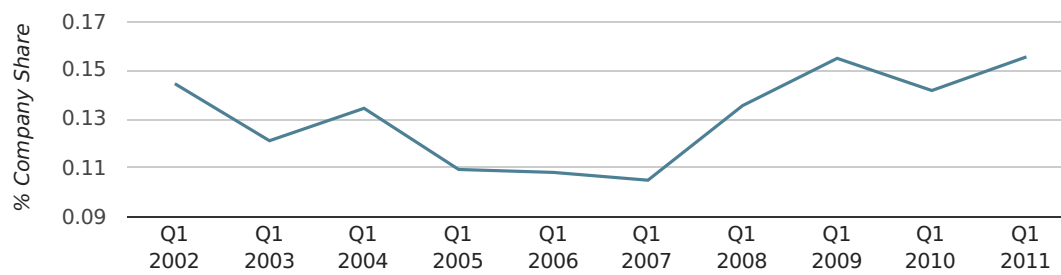
	JANUARY	FEBRUARY	MARCH
NET GROWTH IN 2011	22	20	43
NET GROWTH IN 2010	15	16	16
% CHANGE	46.7%	25.0%	168.8%
RECORD YEAR	2003 (23)	2009 (29)	2011 (43)

Quarterly Data (Q1 Jan-Mar 2011)

In the first quarter of 2011, Uxbridge formed 0.2% of all UK companies.

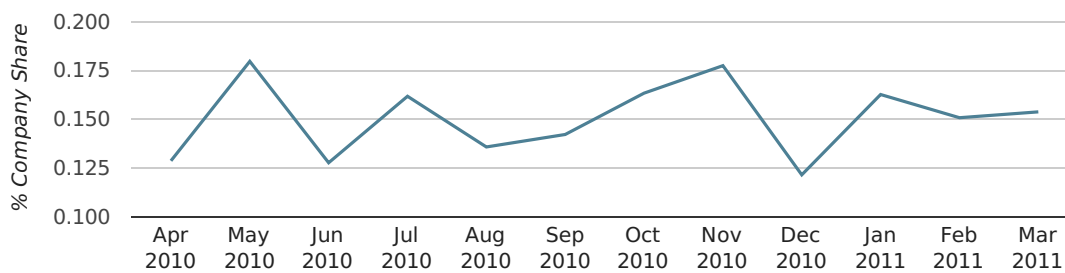
FIRST QUARTER (JAN 2011 - MAR 2011)	UXBRIDGE
2011	0.2%
2010	0.1%
2009	0.2%
2008	0.1%
2007	0.1%
RECORD YEAR (SINCE 1960)	1969 (0.6%)

company share by quarter



Monthly Data (Jan, Feb & Mar 2011)

company share by month



	JANUARY	FEBRUARY	MARCH
UK FORMATION SHARE IN 2011	0.2%	0.2%	0.2%
UK FORMATION SHARE IN 2010	0.1%	0.1%	0.1%
% CHANGE	21.7%	4.4%	6.2%
RECORD YEAR	1966 (0.9%)	1965 (0.7%)	1969 (0.5%)

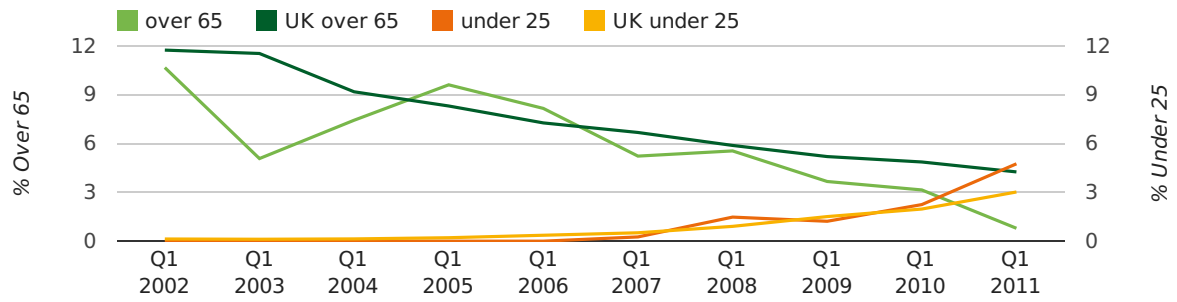
Quarterly Data (Q1 Jan-Mar 2011)

The average age of a director in the first quarter of 2011 was 42.2.

The percentage of directors under the age of 25 was 4.8% compared to the UK figure of 3.0%.

The percentage of directors over the age of 65 was 0.8% compared to the UK figure of 4.3%.

director age by quarter

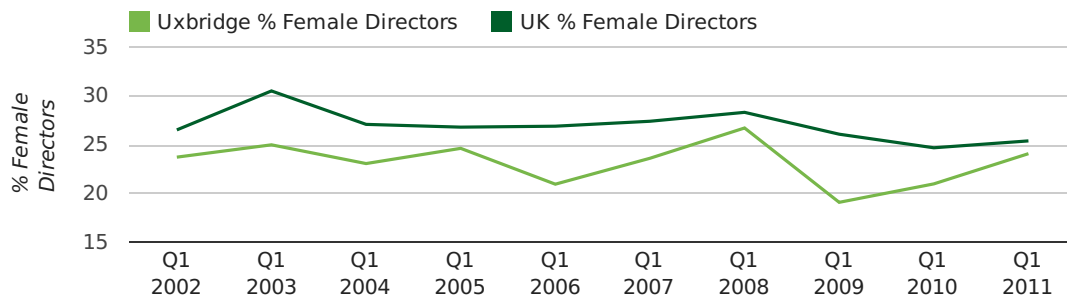


Quarterly Data (Q1 Jan-Mar 2011)

The record first quarter for female directors in Uxbridge was in 1861 when 40.0% of all directors were female.

24.1% of all director appointments in Uxbridge in the first quarter of 2011 were female. This compares to a UK average of 25.4% for the same period.

director gender by quarter



Previous 12 months (Mar 2010-Mar 2011)

Excluding: LIMITED, LTD, &, UK, SERVICES, THE, (UK), AND, LTD., A, LLP, SOLUTIONS, COMPANY, OF.

WORD	PERCENTAGE	UK WORD	UK PERCENTAGE
CONSULTING	1.44%	CONSULTING	5.04%
MANAGEMENT	1.15%	MANAGEMENT	4.97%
CONSULTANCY	0.96%	CONSULTANCY	3.16%
CARE	0.77%	PROPERTY	2.38%
TRADING	0.77%	TRADING	2.10%
LONDON	0.77%	DESIGN	1.93%
ASSOCIATES	0.77%	ASSOCIATES	1.92%
PROPERTY	0.77%	BUSINESS	1.87%
CADBURY	0.67%	CONSTRUCTION	1.80%
BEAUTY	0.67%	CONSULTANTS	1.76%
CONSULTANTS	0.67%	MEDIA	1.69%
INVESTMENTS	0.57%	ENGINEERING	1.61%
HOLDINGS	0.57%	LONDON	1.60%
MARKETING	0.57%	CARE	1.45%
CONSTRUCTION	0.48%	J	1.45%
PRODUCTIONS	0.48%	GLOBAL	1.44%
BUILDING	0.48%	INVESTMENTS	1.43%
DANYL	0.48%	IT	1.41%
MUSIC	0.48%	PROPERTIES	1.36%
LOGISTICS	0.38%	BUILDING	1.34%
EUROPE	0.38%	M	1.30%
FOOD	0.38%	ELECTRICAL	1.28%
PROJECT	0.38%	S	1.24%
RELIANCE	0.38%	INTERNATIONAL	1.23%
DEVELOPMENT	0.38%	SYSTEMS	1.23%

Previous 36 months, excluding companies less than 12 months old

SIC CODE	NUMBER OF COMPANIES	UK COMPANIES
None Supplied	307	202,798
7487 - Other business activities	67	60,968
62020 - Information technology consultancy activities	36	10,246
9999 - Dormant Company	33	19,765
82990 - Other business support service activities not elsewhere classified	26	30,253
70229 - Management consultancy activities other than financial management	26	16,150
96090 - Other service activities not elsewhere classified	23	10,085
9305 - Other service activities	18	8,740
7222 - Other software consultancy and supply	17	7,000
74990 - Non-trading company	16	8,695
99999 - Dormant Company	15	18,336
62090 - Other information technology service activities	14	6,996
4521 - General construction & civil engineering	13	6,183
70100 - Activities of head offices	12	2,849
7414 - Business & management consultancy	11	12,916
68201 - Renting and operating of Housing Association real estate	10	356
7499 - Non-trading company	8	11,316
41202 - Construction of domestic buildings	8	2,290
4534 - Other building installation	8	2,285
7260 - Other computer related activities	8	7,789