

# Wolverhampton

q1 2011 business confidence report



## headlines

- Q1 2011 saw a new record in company registrations in Wolverhampton when compared to any previous Q1.
- Q1 2011 was a record quarter for company registrations in Wolverhampton when compared to any quarter in history.
- March 2011 saw a new record in company registrations in Wolverhampton when compared to any previous March.
- March 2011 was a record month for company registrations in Wolverhampton when compared to any month in history.

## contents

new company registrations

closed companies (dissolved)

net company growth

uk company share

director age

director gender

naming trends

sic data

### Quarterly Data (Q1 Jan-Mar 2011)

Q1 2011 saw a new record in company registrations in Wolverhampton when compared to any previous Q1.

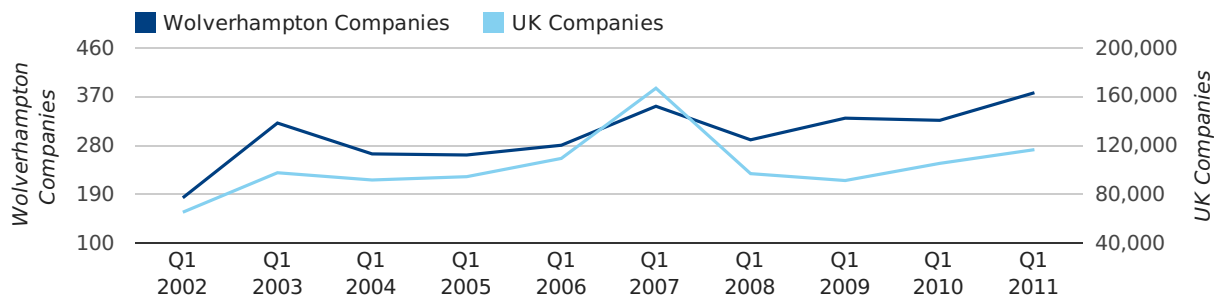
Q1 2011 was a record quarter for company registrations in Wolverhampton when compared to any quarter in history.

A total of 377 companies were registered in Wolverhampton during the first quarter of 2011 (Jan 2011 - Mar 2011).

This figure is an increase of 15.6% versus the same period last year (Q1 2010). This figure compares well to the UK as a whole, which saw an increase of 10.7% against the same period last year.

FIRST QUARTER (JAN 2011 - MAR 2011)	WOLVERHAMPTON	UK
2011	377	116,391
2010	326	105,137
% CHANGE	15.6%	10.7%
RECORD YEAR	2011 (377)	2007 (166,814)

### new companies by quarter

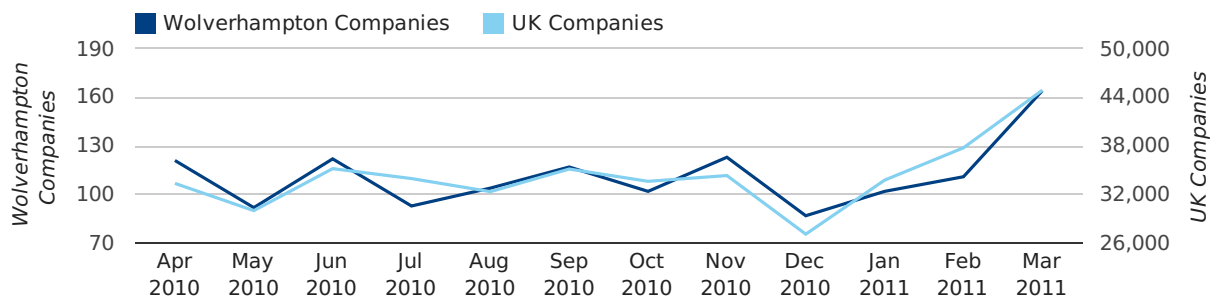


### Monthly Data (Jan, Feb & Mar 2011)

March 2011 saw a new record in company registrations in Wolverhampton when compared to any previous March.

March 2011 was a record month for company registrations in Wolverhampton when compared to any month in history.

### new companies by month



	JANUARY	FEBRUARY	MARCH
NEW COMPANIES IN 2011	102	111	164
NEW COMPANIES IN 2010	75	114	137
% CHANGE	36.0%	-2.6%	19.7%
RECORD YEAR	2009 (104)	2007 (118)	2011 (164)



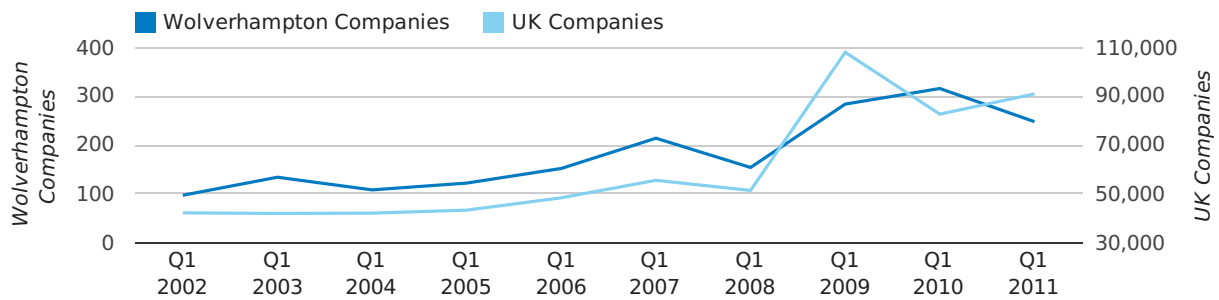
### Quarterly Data (Q1 Jan-Mar 2011)

A total of 248 companies were dissolved in Wolverhampton during the first quarter of 2011 (Jan 2011 - Mar 2011).

This figure is a decrease of 21.5% versus the same period last year (Q1 2010). This figure compares well to the UK as a whole, which saw an increase of 10.0% against the same period last year.

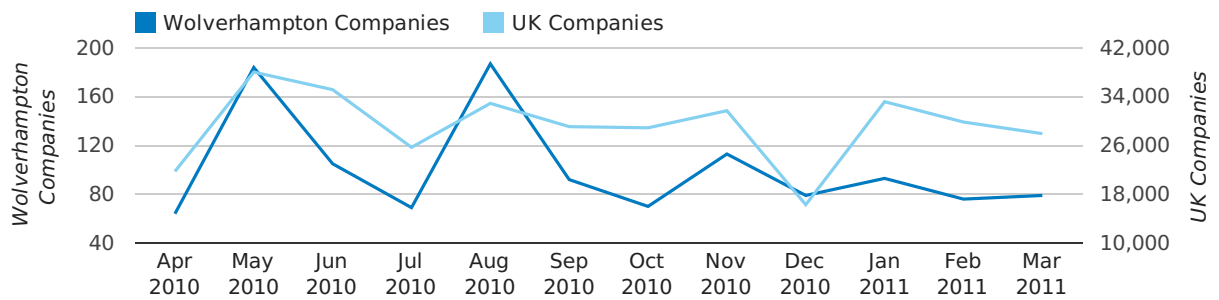
FIRST QUARTER (JAN 2011 - MAR 2011)	WOLVERHAMPTON	UK
2011	248	90,986
2010	316	82,677
% CHANGE	-21.5%	10.0%
RECORD YEAR	2010 (316)	2009 (108,060)

### dissolved companies by quarter



### Monthly Data (Jan, Feb & Mar 2011)

#### dissolved companies by month



	JANUARY	FEBRUARY	MARCH
CLOSED COMPANIES IN 2011	93	76	79
CLOSED COMPANIES IN 2010	76	116	124
% CHANGE	22.4%	-34.5%	-36%
RECORD YEAR	2007 (95)	2010 (116)	2009 (164)

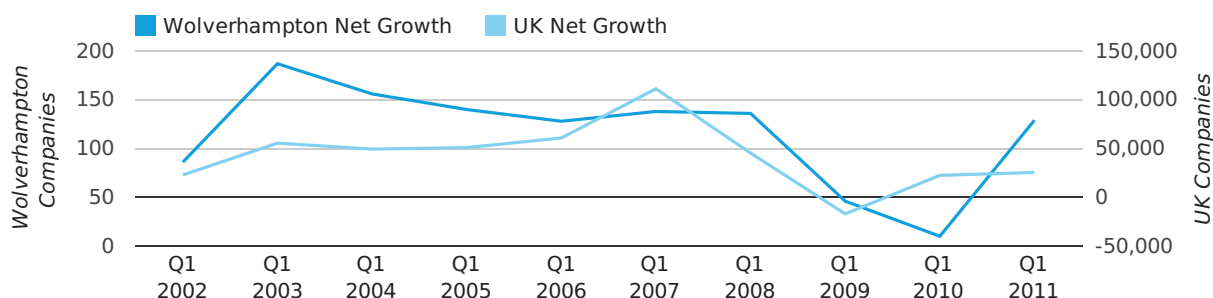
### Quarterly Data (Q1 Jan-Mar 2011)

Net company growth for Wolverhampton during the first quarter of 2011 (Jan 2011 - Mar 2011) was 129 companies.

This represents an increase of 1,190.0% on the same period last year.

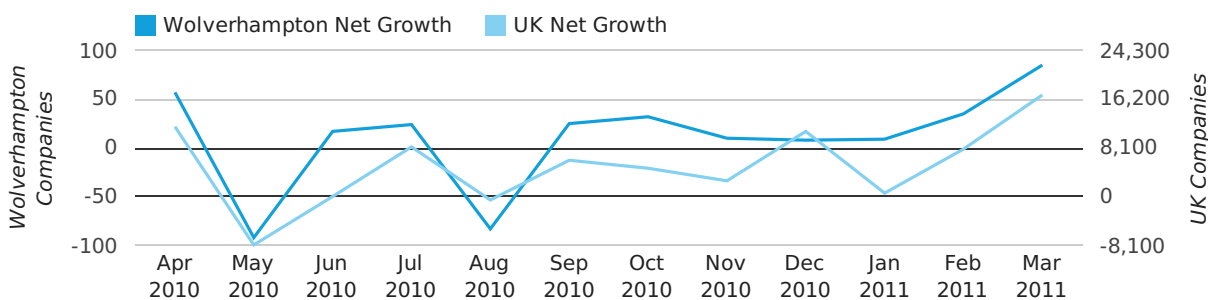
FIRST QUARTER (JAN 2011 - MAR 2011)	WOLVERHAMPTON	UK
2011	129	25,405
2010	10	22,460
% CHANGE	1,190.0%	13.1%
RECORD YEAR	2003 (187)	2007 (111,282)

### net growth by quarter



### Monthly Data (Jan, Feb & Mar 2011)

### net growth by month



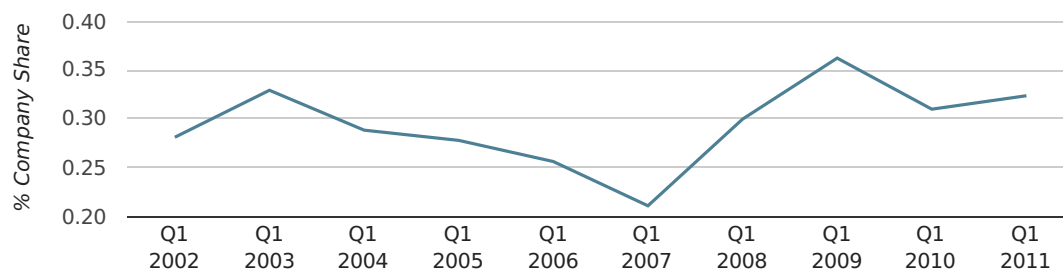
	JANUARY	FEBRUARY	MARCH
NET GROWTH IN 2011	9	35	85
NET GROWTH IN 2010	-1	-2	13
% CHANGE	-1,000.0%	-1,850.0%	553.8%
RECORD YEAR	2009 (64)	2006 (69)	2008 (103)

### Quarterly Data (Q1 Jan-Mar 2011)

In the first quarter of 2011, Wolverhampton formed 0.3% of all UK companies.

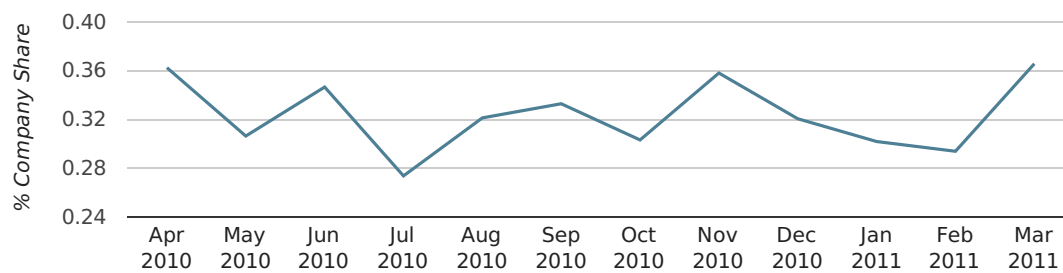
FIRST QUARTER (JAN 2011 - MAR 2011)	WOLVERHAMPTON
2011	0.3%
2010	0.3%
2009	0.4%
2008	0.3%
2007	0.2%
RECORD YEAR (SINCE 1960)	1966 (0.9%)

### company share by quarter



### Monthly Data (Jan, Feb & Mar 2011)

### company share by month



	JANUARY	FEBRUARY	MARCH
UK FORMATION SHARE IN 2011	0.3%	0.3%	0.4%
UK FORMATION SHARE IN 2010	0.3%	0.3%	0.3%
% CHANGE	17.3%	-14.4%	14.2%
RECORD YEAR	1963 (1.4%)	1966 (1.4%)	1961 (1.0%)

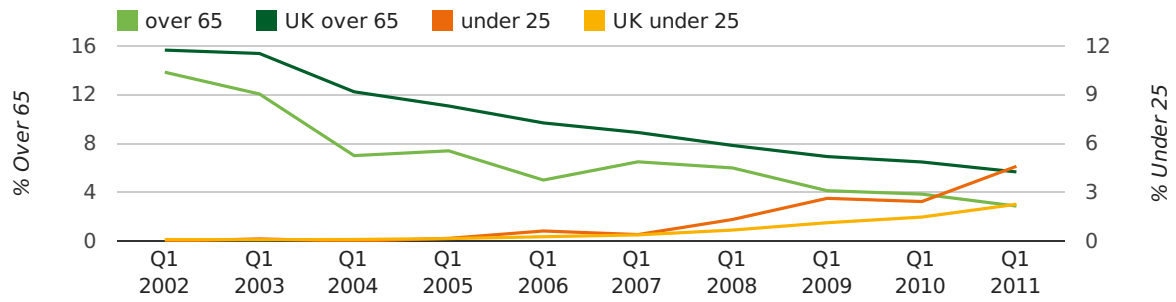
### Quarterly Data (Q1 Jan-Mar 2011)

The average age of a director in the first quarter of 2011 was 43.4.

The percentage of directors under the age of 25 was 4.6% compared to the UK figure of 3.0%.

The percentage of directors over the age of 65 was 2.9% compared to the UK figure of 4.3%.

#### director age by quarter



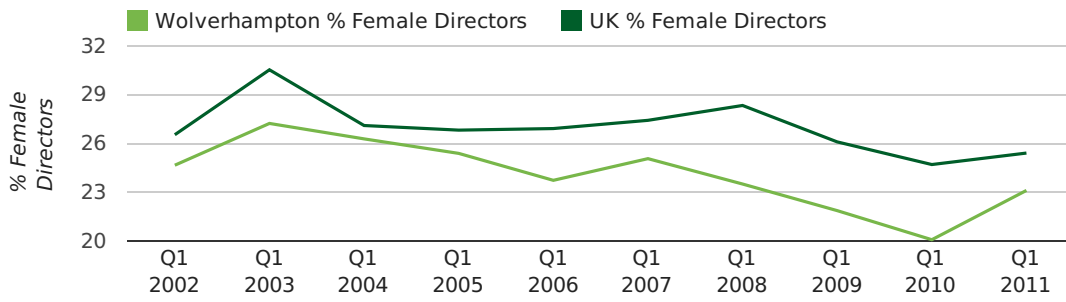


### Quarterly Data (Q1 Jan-Mar 2011)

The record first quarter for female directors in Wolverhampton was in 1861 when 40.0% of all directors were female.

23.1% of all director appointments in Wolverhampton in the first quarter of 2011 were female. This compares to a UK average of 25.4% for the same period.

#### director gender by quarter



## Previous 12 months (Mar 2010-Mar 2011)

Excluding: LIMITED, LTD, &amp;, UK, SERVICES, THE, (UK), AND, LTD., A, LLP, SOLUTIONS, COMPANY, OF.

WORD	PERCENTAGE	UK WORD	UK PERCENTAGE
MANAGEMENT	1.81%	CONSULTING	5.04%
CONSULTANCY	1.06%	MANAGEMENT	4.97%
CONSTRUCTION	1.06%	CONSULTANCY	3.16%
J	1.01%	PROPERTY	2.38%
ROK	0.96%	TRADING	2.10%
TRADING	0.86%	DESIGN	1.93%
CARE	0.81%	ASSOCIATES	1.92%
CONSULTING	0.70%	BUSINESS	1.87%
(MIDLANDS)	0.70%	CONSTRUCTION	1.80%
ASSOCIATES	0.65%	CONSULTANTS	1.76%
WOLVERHAMPTON	0.65%	MEDIA	1.69%
ENGINEERING	0.65%	ENGINEERING	1.61%
BUILDING	0.65%	LONDON	1.60%
B	0.60%	CARE	1.45%
INTERNATIONAL	0.60%	J	1.45%
CENTRE	0.55%	GLOBAL	1.44%
SECURITY	0.55%	INVESTMENTS	1.43%
R	0.55%	IT	1.41%
DESIGN	0.55%	PROPERTIES	1.36%
HOMES	0.55%	BUILDING	1.34%
DEVELOPMENTS	0.50%	M	1.30%
ENTERPRISES	0.50%	ELECTRICAL	1.28%
PROPERTIES	0.50%	S	1.24%
GLOBAL	0.45%	INTERNATIONAL	1.23%
D	0.45%	SYSTEMS	1.23%

## Previous 36 months, excluding companies less than 12 months old

SIC CODE	NUMBER OF COMPANIES	UK COMPANIES
None Supplied	688	202,798
7487 - Other business activities	168	60,968
82990 - Other business support service activities not elsewhere classified	60	30,253
74990 - Non-trading company	53	8,695
9999 - Dormant Company	48	19,765
7499 - Non-trading company	46	11,316
96090 - Other service activities not elsewhere classified	39	10,085
70229 - Management consultancy activities other than financial management	34	16,150
9305 - Other service activities	33	8,740
99999 - Dormant Company	33	18,336
86900 - Other human health activities	27	4,092
7260 - Other computer related activities	27	7,789
7222 - Other software consultancy and supply	23	7,000
62020 - Information technology consultancy activities	22	10,246
74909 - Other professional, scientific and technical activities not elsewhere classified	21	7,788
62090 - Other information technology service activities	21	6,996
6024 - Freight transport by road	19	2,299
7414 - Business & management consultancy	19	12,916
70100 - Activities of head offices	18	2,849
41100 - Development of building projects	13	3,921