

# Wolverhampton

q3 2011 business confidence report



## headlines

- Q3 2011 saw a new record in company registrations in Wolverhampton when compared to any previous Q3.
- August 2011 saw a new record in company registrations in Wolverhampton when compared to any previous August.

## contents

new company registrations

closed companies (dissolved)

net company growth

uk company share

director age

director gender

naming trends

sic data

### Quarterly Data (Q3 Jul-Sep 2011)

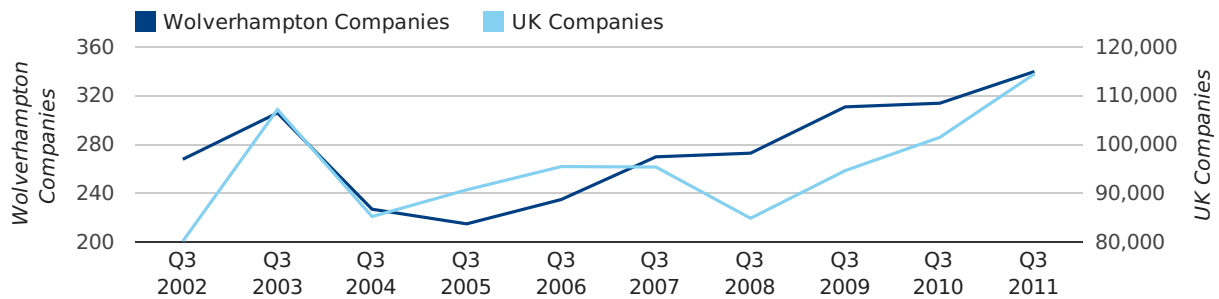
Q3 2011 saw a new record in company registrations in Wolverhampton when compared to any previous Q3.

A total of 340 companies were registered in Wolverhampton during the third quarter of 2011 (Jul 2011 - Sep 2011).

This figure is an increase of 8.3% versus the same period last year (Q3 2010). This figure compares equally to the UK as a whole, which saw an increase of 12.8% against the same period last year.

THIRD QUARTER (JUL 2011 - SEP 2011)	WOLVERHAMPTON	UK
2011	340	114,512
2010	314	101,492
% CHANGE	8.3%	12.8%
RECORD YEAR	2011 (340)	2011 (114,512)

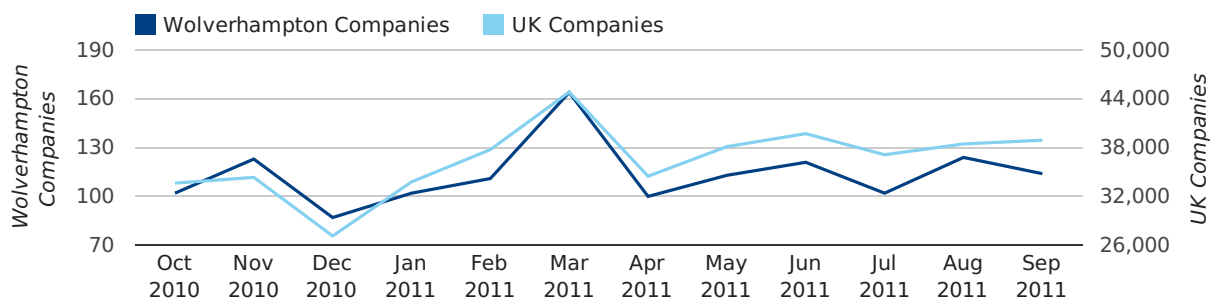
### new companies by quarter



### Monthly Data (Jul, Aug & Sep 2011)

August 2011 saw a new record in company registrations in Wolverhampton when compared to any previous August.

### new companies by month



	JULY	AUGUST	SEPTEMBER
NEW COMPANIES IN 2011	102	124	114
NEW COMPANIES IN 2010	93	104	117
% CHANGE	9.7%	19.2%	-2.6%
RECORD YEAR	2003 (125)	2011 (124)	2009 (124)

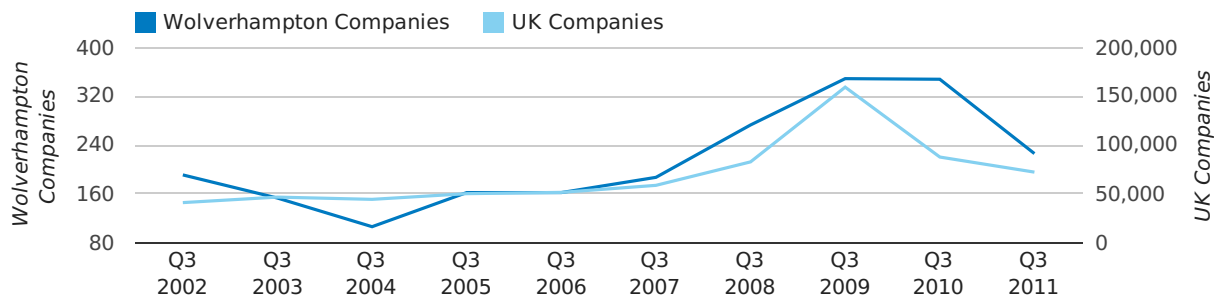
### Quarterly Data (Q3 Jul-Sep 2011)

A total of 226 companies were dissolved in Wolverhampton during the third quarter of 2011 (Jul 2011 - Sep 2011).

This figure is a decrease of 35.1% versus the same period last year (Q3 2010). This figure compares well to the UK as a whole, which saw a decrease of 17.6% against the same period last year.

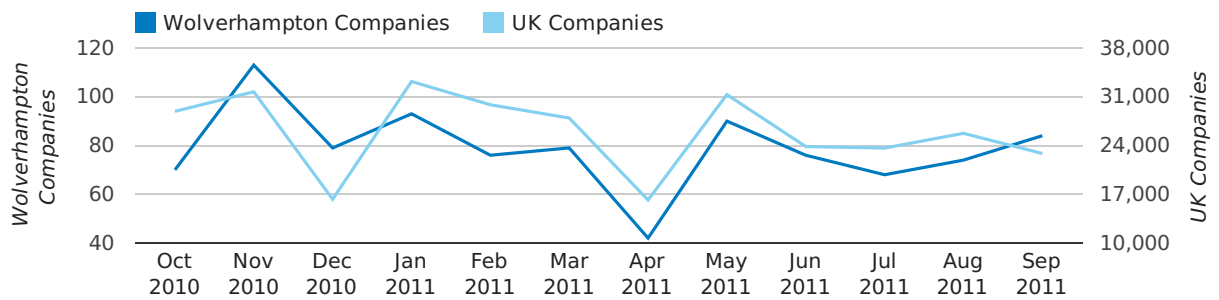
THIRD QUARTER (JUL 2011 - SEP 2011)	WOLVERHAMPTON	UK
2011	226	72,230
2010	348	87,705
% CHANGE	-35.1%	-17.6%
RECORD YEAR	2009 (349)	2009 (159,401)

### dissolved companies by quarter



### Monthly Data (Jul, Aug & Sep 2011)

### dissolved companies by month



	JULY	AUGUST	SEPTEMBER
CLOSED COMPANIES IN 2011	68	74	84
CLOSED COMPANIES IN 2010	69	187	92
% CHANGE	-1.4%	-60.4%	-9%
RECORD YEAR	2009 (82)	2008 (202)	2009 (172)

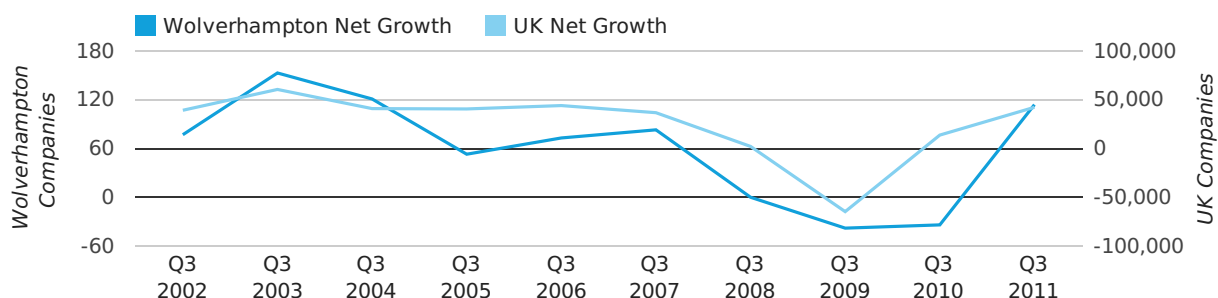
### Quarterly Data (Q3 Jul-Sep 2011)

Net company growth for Wolverhampton during the third quarter of 2011 (Jul 2011 - Sep 2011) was 114 companies.

This represents an increase of 435.3% on the same period last year.

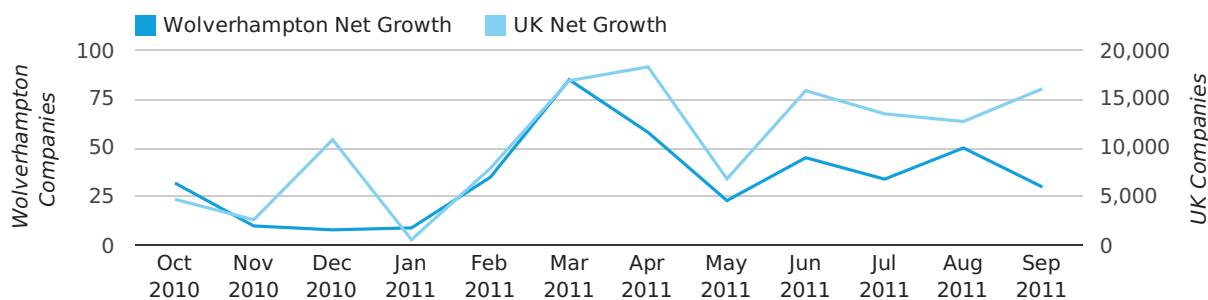
THIRD QUARTER (JUL 2011 - SEP 2011)	WOLVERHAMPTON	UK
2011	114	42,282
2010	-34	13,787
% CHANGE	-435.3%	206.7%
RECORD YEAR	2003 (153)	2003 (60,597)

### net growth by quarter



### Monthly Data (Jul, Aug & Sep 2011)

### net growth by month



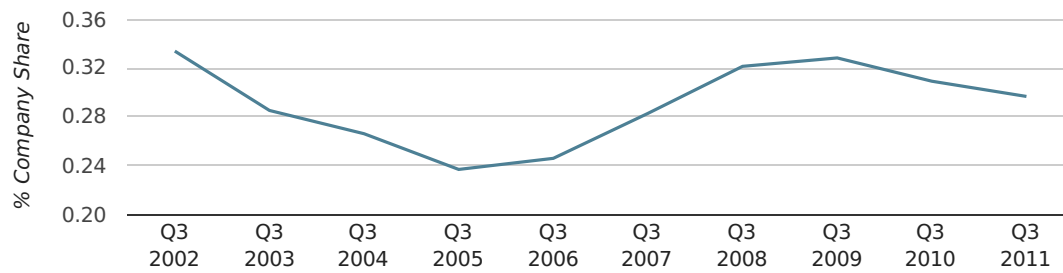
	JULY	AUGUST	SEPTEMBER
NET GROWTH IN 2011	34	50	30
NET GROWTH IN 2010	24	-83	25
% CHANGE	41.7%	-160.2%	20.0%
RECORD YEAR	2003 (84)	2002 (52)	2006 (44)

### Quarterly Data (Q3 Jul-Sep 2011)

In the third quarter of 2011, Wolverhampton formed 0.3% of all UK companies.

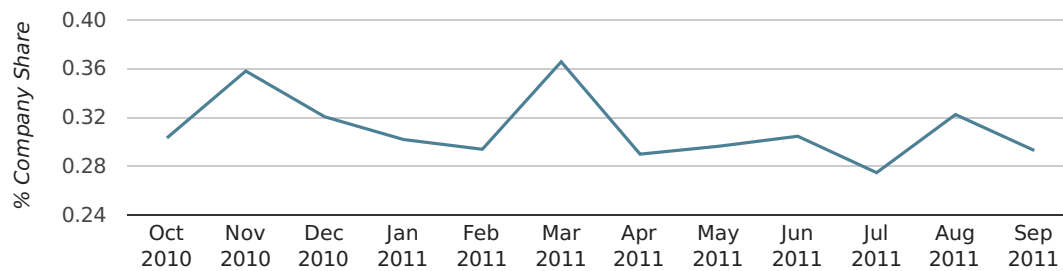
THIRD QUARTER (JUL 2011 - SEP 2011)	WOLVERHAMPTON
2011	0.3%
2010	0.3%
2009	0.3%
2008	0.3%
2007	0.3%
RECORD YEAR (SINCE 1960)	1966 (1.3%)

### company share by quarter



### Monthly Data (Jul, Aug & Sep 2011)

### company share by month



	JULY	AUGUST	SEPTEMBER
UK FORMATION SHARE IN 2011	0.3%	0.3%	0.3%
UK FORMATION SHARE IN 2010	0.3%	0.3%	0.3%
% CHANGE	0.4%	0.3%	-12.0%
RECORD YEAR	1962 (1.6%)	1966 (1.9%)	1962 (1.5%)

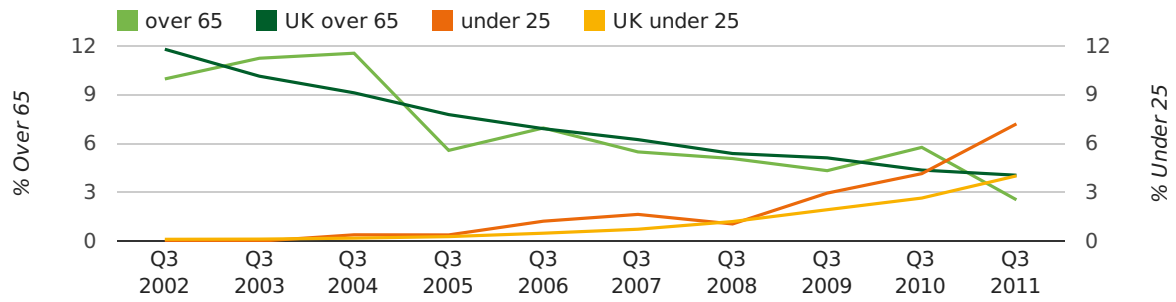
### Quarterly Data (Q3 Jul-Sep 2011)

The average age of a director in the third quarter of 2011 was 40.7.

The percentage of directors under the age of 25 was 7.2% compared to the UK figure of 4.0%.

The percentage of directors over the age of 65 was 2.5% compared to the UK figure of 4.1%.

#### director age by quarter

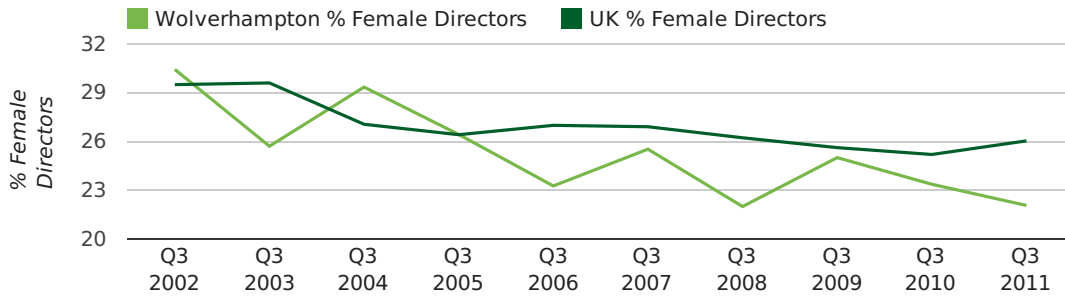


### Quarterly Data (Q3 Jul-Sep 2011)

The record third quarter for female directors in Wolverhampton was in 1862 when 50.0% of all directors were female.

22.1% of all director appointments in Wolverhampton in the third quarter of 2011 were female. This compares to a UK average of 26.0% for the same period.

#### director gender by quarter





## Previous 12 months (Sep 2010-Sep 2011)

Excluding: LIMITED, LTD, &amp;, UK, SERVICES, THE, (UK), AND, LTD., A, LLP, SOLUTIONS, COMPANY, OF.

WORD	PERCENTAGE	UK WORD	UK PERCENTAGE
MANAGEMENT	1.24%	CONSULTING	5.11%
CONSULTANCY	1.19%	MANAGEMENT	4.75%
CONSTRUCTION	0.89%	CONSULTANCY	3.19%
CARE	0.84%	PROPERTY	2.41%
CONSULTING	0.84%	TRADING	2.06%
TRAINING	0.79%	DESIGN	1.94%
J	0.79%	ASSOCIATES	1.85%
ROK	0.74%	BUSINESS	1.82%
DESIGN	0.70%	CONSULTANTS	1.76%
R	0.70%	ENGINEERING	1.74%
PROPERTIES	0.65%	MEDIA	1.72%
S	0.65%	CONSTRUCTION	1.72%
HOMES	0.65%	LONDON	1.63%
P	0.60%	J	1.47%
BUILDING	0.60%	GLOBAL	1.46%
COMMUNITY	0.60%	INVESTMENTS	1.43%
INTERNATIONAL	0.55%	CARE	1.42%
CO	0.55%	IT	1.38%
TRADING	0.55%	BUILDING	1.30%
ASSOCIATES	0.50%	PROPERTIES	1.28%
CENTRE	0.50%	ELECTRICAL	1.27%
CONTRACTS	0.50%	M	1.25%
D	0.50%	ENERGY	1.22%
DEVELOPMENTS	0.50%	TRAINING	1.21%
WOLVERHAMPTON	0.50%	S	1.21%

## Previous 36 months, excluding companies less than 12 months old

SIC CODE	NUMBER OF COMPANIES	UK COMPANIES
None Supplied	706	204,493
7487 - Other business activities	159	65,177
9999 - Dormant Company	70	22,587
82990 - Other business support service activities not elsewhere classified	61	29,245
74990 - Non-trading company	49	8,064
7499 - Non-trading company	46	11,543
96090 - Other service activities not elsewhere classified	41	10,018
9305 - Other service activities	38	10,525
99999 - Dormant Company	35	18,281
7414 - Business & management consultancy	29	14,755
86900 - Other human health activities	26	4,019
7222 - Other software consultancy and supply	25	8,345
70229 - Management consultancy activities other than financial management	25	15,760
7260 - Other computer related activities	24	8,686
74909 - Other professional, scientific and technical activities not elsewhere classified	23	7,551
62090 - Other information technology service activities	20	6,798
4521 - General construction & civil engineering	20	6,321
6024 - Freight transport by road	19	2,601
45200 - Maintenance and repair of motor vehicles	14	2,179
70100 - Activities of head offices	14	2,479